

Data Path : Z:\pestpcbsrv\HPCHEM1\ECD_S\Data\PS091219\
 Data File : PS006683.D
 Signal(s) : Signal #1: ECD1A.ch Signal #2: ECD2B.ch
 Acq On : 12 Sep 2019 20:49
 Operator : SM\AJ
 Sample : K4712-08MSD
 Misc :
 ALS Vial : 9 Sample Multiplier: 1

Instrument :
 ECD_S
ClientSampleId :
 SB-4-20-22MSD

Manual Integrations
APPROVED
 Ankita
 9/13/2019 3:53:51 PM

Integration File signal 1: autoint1.e
 Integration File signal 2: autoint2.e
 Quant Time: Sep 13 04:52:31 2019
 Quant Method : Z:\pestpcbsrv\HPCHEM1\ECD_S\Method\PS090919.M
 Quant Title : 8080.M
 QLast Update : Tue Sep 10 06:14:42 2019
 Response via : Initial Calibration
 Integrator: ChemStation

Volume Inj. : 2 µl
 Signal #1 Phase : Rtx-CLPesticides Signal #2 Phase: Rtx-CLPesticides2
 Signal #1 Info : 30M x 0.32mm x0.5 Signal #2 Info : 30M x 0.32mm x 0.25µm

	Compound	RT#1	RT#2	Resp#1	Resp#2	ng/ml	ng/ml

System Monitoring Compounds							
4) S	2,4-DCAA	5.505	5.235	803.4E6	449.8E6	1034.075	1053.403
Target Compounds							
1) T	Dalapon	2.071	1.781	588.0E6	416.2E6	601.627m	814.483 #
2) T	3,5-DICHL...	4.873	4.539	420.7E6	213.1E6	424.915	393.718m
5) T	DICAMBA	5.658	5.364	1836.8E6	1014.1E6	637.144	632.517
6) T	MCPD	5.809	5.447	108.5E6	60131518	57.043	56.818
7) T	MCPA	5.942	5.624	195.1E6	101.2E6	69.040	57.687m
8) T	DICHLORPROP	6.285	5.902	575.9E6	353.2E6	809.819	907.639m
9) T	2,4-D	6.498	6.171	736.1E6	392.7E6	952.720	823.307m
10) T	Pentachlo...	6.763	6.540	1910.6E6	1030.0E6	171.511	170.961
11) T	2,4,5-TP ...	7.296	6.901	3177.6E6	2254.9E6	738.458	990.555m#
12) T	2,4,5-T	7.567	7.262	3352.5E6	1766.5E6	719.471	819.297
13) T	2,4-DB	8.097	7.748	451.9E6	235.6E6	742.568	856.727
14) T	DINOSEB	9.189	8.059	418.4E6	184.8E6	120.190	110.313
15) T	Picloram	9.020	8.995	3901.7E6	2182.8E6	578.404	589.856
16) T	DCPA	9.460	8.954	2753.6E6	1519.0E6	487.432	482.198

(f)=RT Delta > 1/2 Window (#)=Amounts differ by > 25% (m)=manual int.

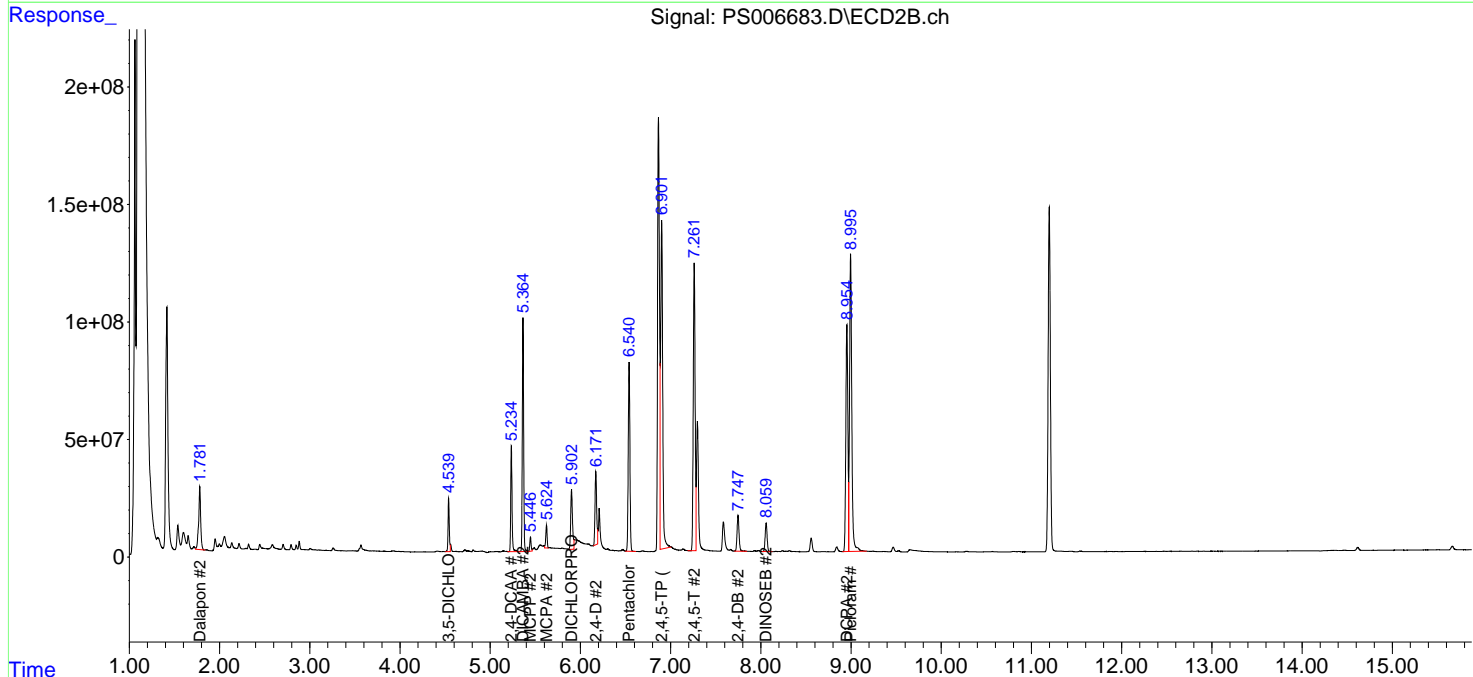
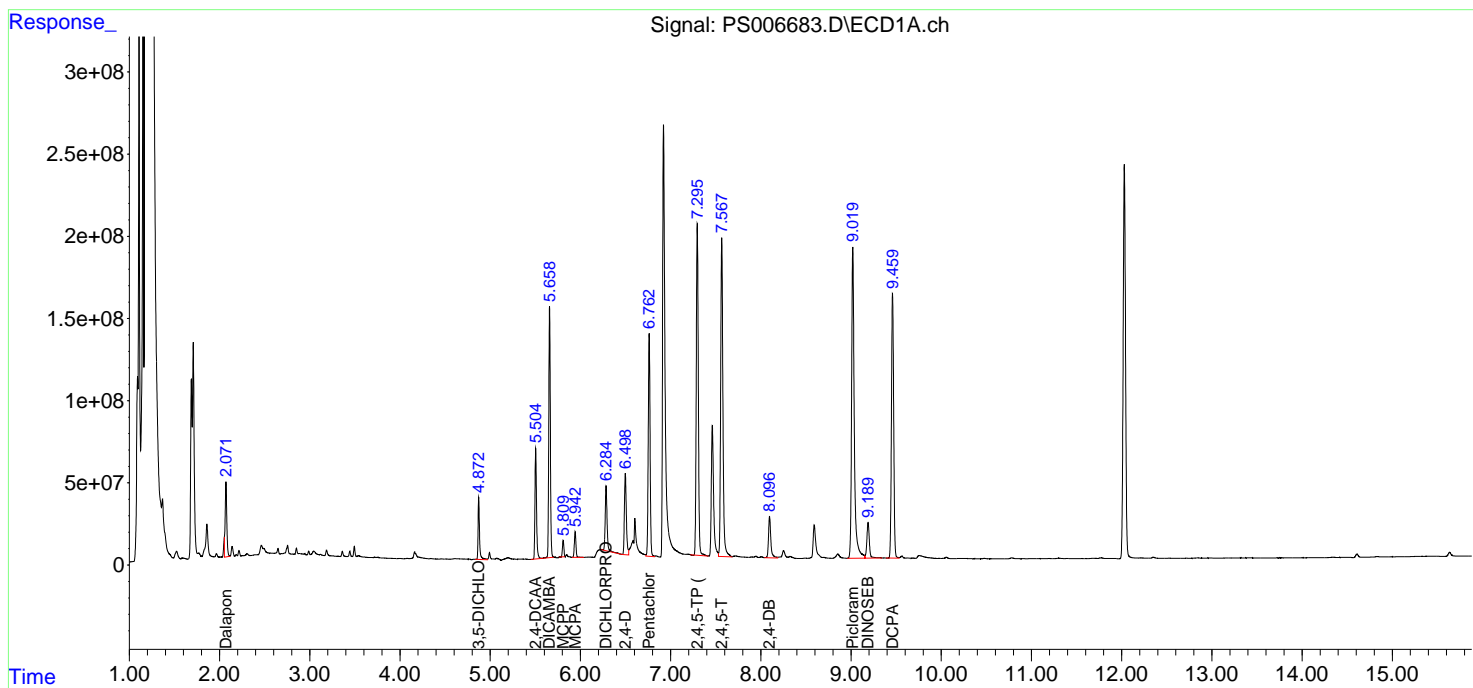
Data Path : Z:\pestpcbsrv\HPCHEM1\ECD_S\Data\PS091219\
 Data File : PS006683.D
 Signal(s) : Signal #1: ECD1A.ch Signal #2: ECD2B.ch
 Acq On : 12 Sep 2019 20:49
 Operator : SM\AJ
 Sample : K4712-08MSD
 Misc :
 ALS Vial : 9 Sample Multiplier: 1

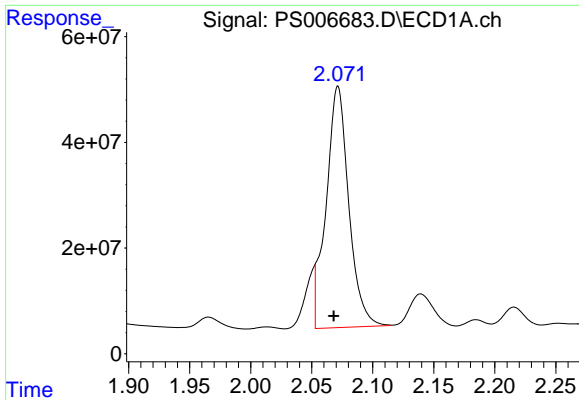
Instrument :
 ECD_S
Client Sampled :
 SB-4-20-22MSD

Manual Integrations
APPROVED
 Ankita
 9/13/2019 3:53:51 PM

Integration File signal 1: autoint1.e
 Integration File signal 2: autoint2.e
 Quant Time: Sep 13 04:52:31 2019
 Quant Method : Z:\pestpcbsrv\HPCHEM1\ECD_S\Method\PS090919.M
 Quant Title : 8080.M
 QLast Update : Tue Sep 10 06:14:42 2019
 Response via : Initial Calibration
 Integrator: ChemStation

Volume Inj. : 2 µl
 Signal #1 Phase : Rtx-CLPesticides Signal #2 Phase: Rtx-CLPesticides2
 Signal #1 Info : 30M x 0.32mm x0.5 Signal #2 Info : 30M x 0.32mm x 0.25µm





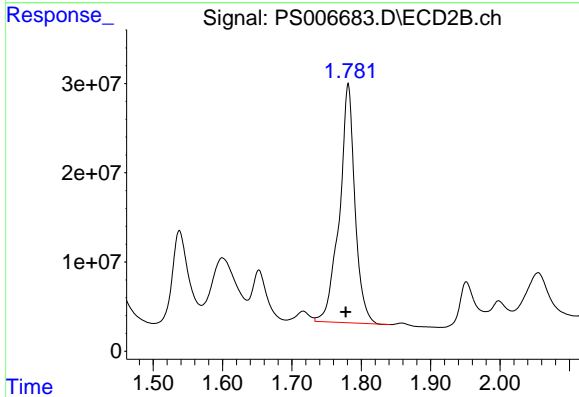
#1 Dalapon

R.T.: 2.071 min
 Delta R.T.: 0.003 min
 Response: 588029719
 Conc: 601.63 ng/ml m

Instrument :
 ECD_S
 ClientSampleId :
 SB-4-20-22MSD

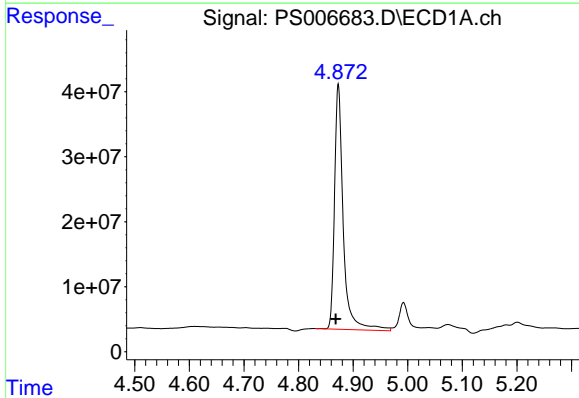
Manual Integrations
 APPROVED

Ankita
 9/13/2019 3:53:51 PM



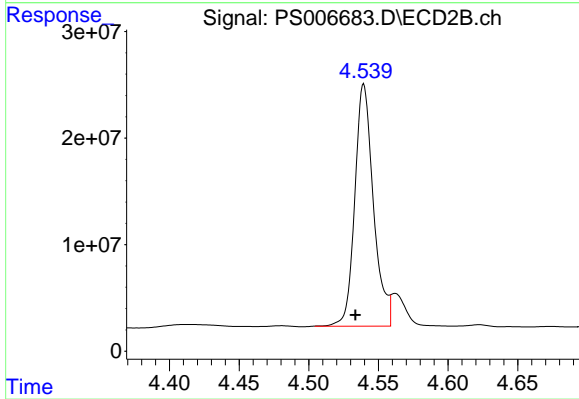
#1 Dalapon

R.T.: 1.781 min
 Delta R.T.: 0.004 min
 Response: 416240240
 Conc: 814.48 ng/ml



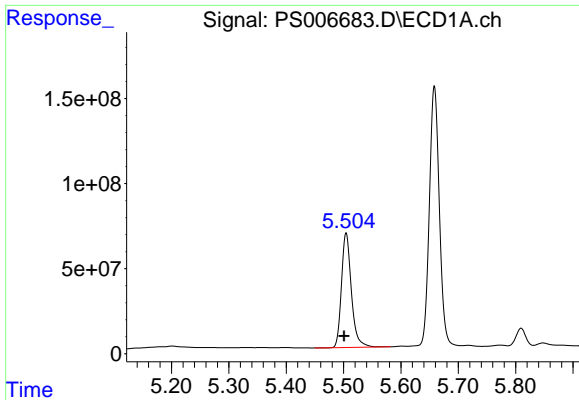
#2 3,5-DICHLOROBENZOIC ACID

R.T.: 4.873 min
 Delta R.T.: 0.005 min
 Response: 420657923
 Conc: 424.92 ng/ml



#2 3,5-DICHLOROBENZOIC ACID

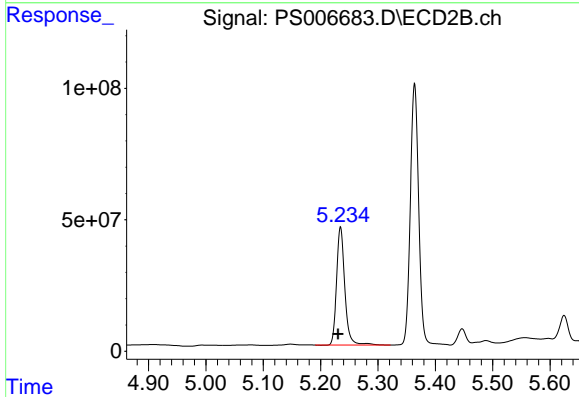
R.T.: 4.539 min
 Delta R.T.: 0.006 min
 Response: 213100650
 Conc: 393.72 ng/ml m



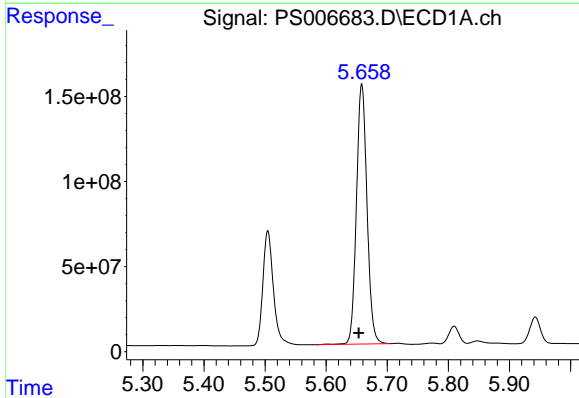
#4 2,4-DCAA
 R.T.: 5.505 min
 Delta R.T.: 0.004 min
 Response: 803357481
 Conc: 1034.07 ng/ml

Instrument :
 ECD_S
ClientSampled :
 SB-4-20-22MSD

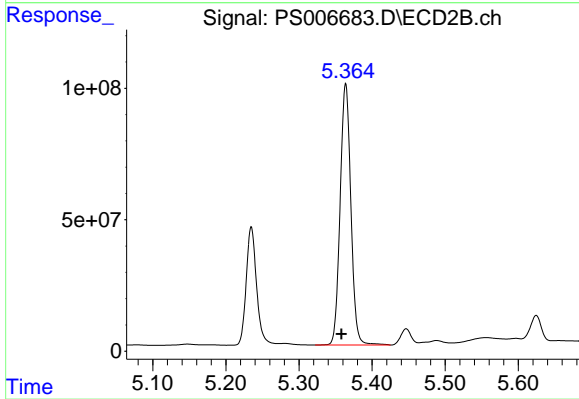
Manual Integrations
APPROVED
 Ankita
 9/13/2019 3:53:51 PM



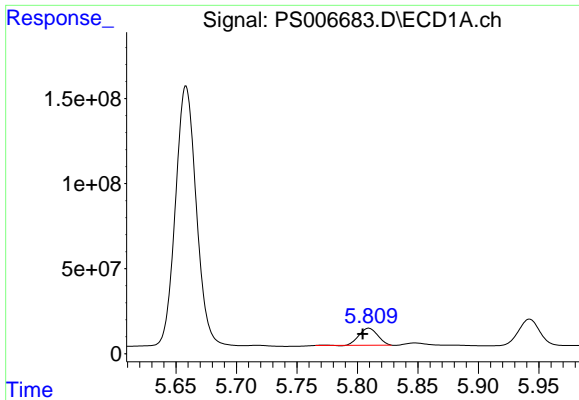
#4 2,4-DCAA
 R.T.: 5.235 min
 Delta R.T.: 0.005 min
 Response: 449805724
 Conc: 1053.40 ng/ml



#5 DICAMBA
 R.T.: 5.658 min
 Delta R.T.: 0.005 min
 Response: 1836833926
 Conc: 637.14 ng/ml



#5 DICAMBA
 R.T.: 5.364 min
 Delta R.T.: 0.006 min
 Response: 1014064162
 Conc: 632.52 ng/ml



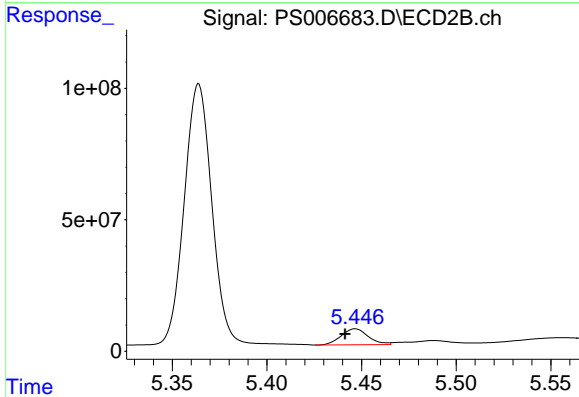
#6 MCPP

R.T.: 5.809 min
 Delta R.T.: 0.005 min
 Response: 108513473
 Conc: 57.04 ug/ml

Instrument :
 ECD_S
 ClientSampled :
 SB-4-20-22MSD

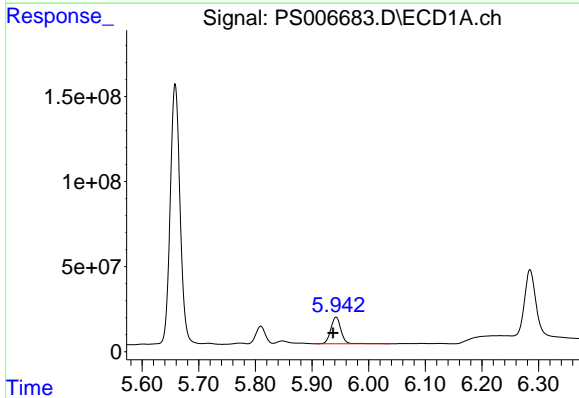
Manual Integrations
 APPROVED

Ankita
 9/13/2019 3:53:51 PM



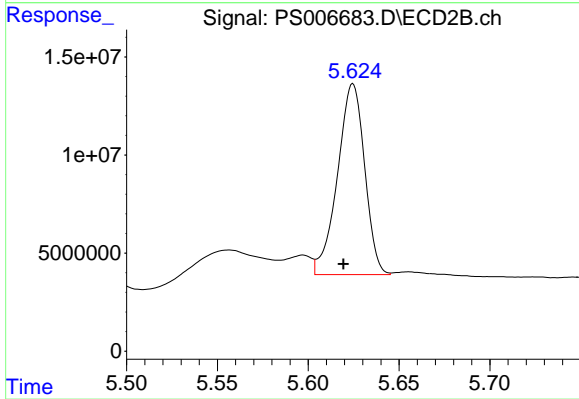
#6 MCPP

R.T.: 5.447 min
 Delta R.T.: 0.005 min
 Response: 60131518
 Conc: 56.82 ug/ml



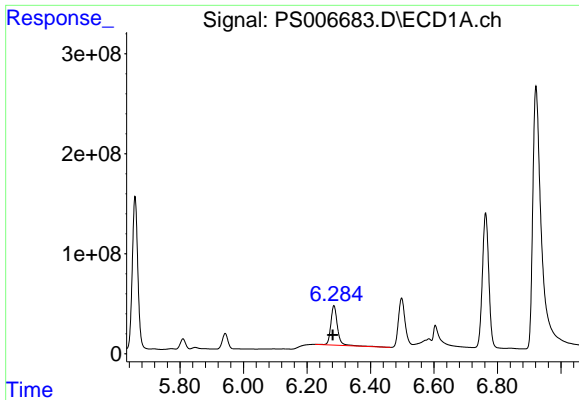
#7 MCPA

R.T.: 5.942 min
 Delta R.T.: 0.005 min
 Response: 195123375
 Conc: 69.04 ug/ml



#7 MCPA

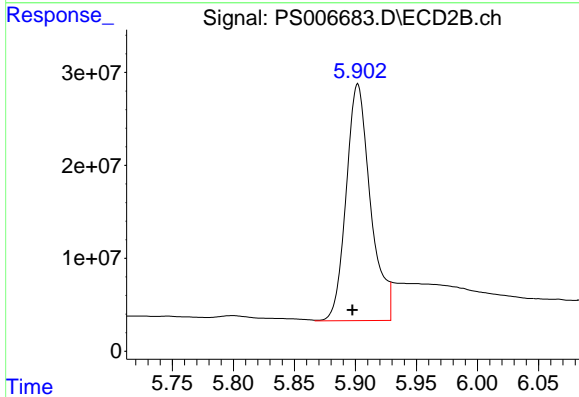
R.T.: 5.624 min
 Delta R.T.: 0.005 min
 Response: 101183760
 Conc: 57.69 ug/ml m



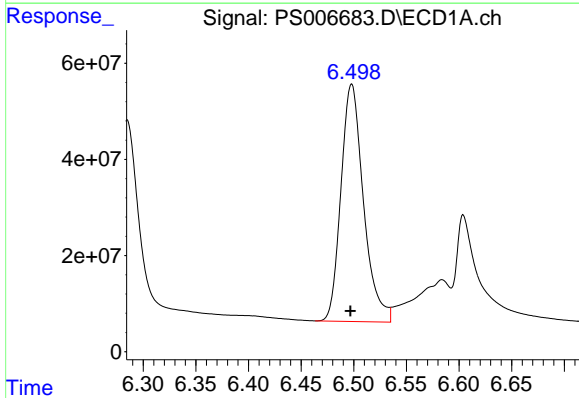
#8 DICHLORPROP
 R.T.: 6.285 min
 Delta R.T.: 0.004 min
 Response: 575917814
 Conc: 809.82 ng/ml

Instrument :
 ECD_S
ClientSampled :
 SB-4-20-22MSD

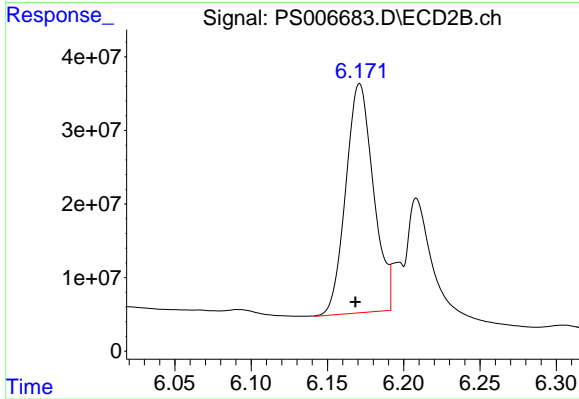
Manual Integrations
APPROVED
 Ankita
 9/13/2019 3:53:51 PM



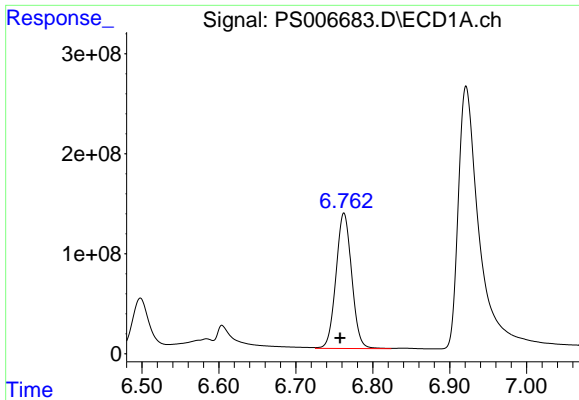
#8 DICHLORPROP
 R.T.: 5.902 min
 Delta R.T.: 0.004 min
 Response: 353239960
 Conc: 907.64 ng/ml m



#9 2,4-D
 R.T.: 6.498 min
 Delta R.T.: 0.001 min
 Response: 736093254
 Conc: 952.72 ng/ml



#9 2,4-D
 R.T.: 6.171 min
 Delta R.T.: 0.003 min
 Response: 392707546
 Conc: 823.31 ng/ml m

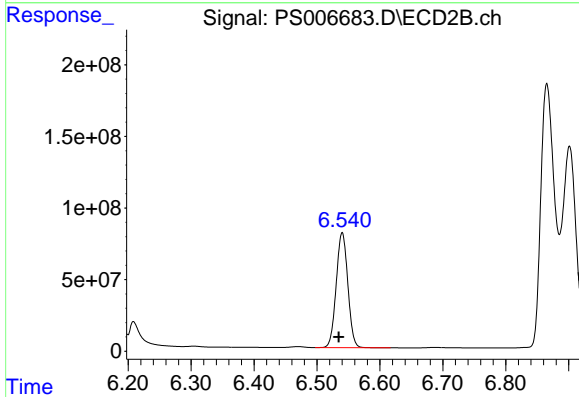


#10 Pentachlorophenol
 R.T.: 6.763 min
 Delta R.T.: 0.005 min
 Response: 1910612046
 Conc: 171.51 ng/ml

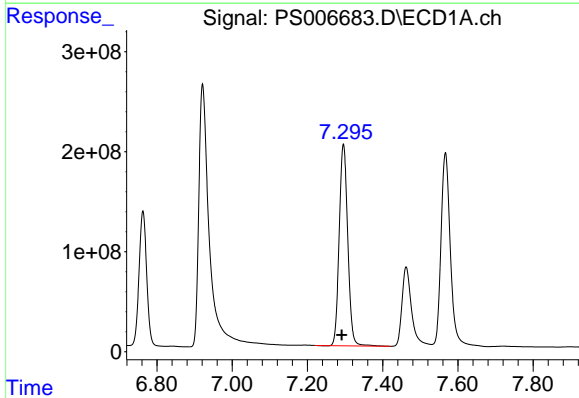
Instrument :
 ECD_S
 ClientSampled :
 SB-4-20-22MSD

Manual Integrations
 APPROVED

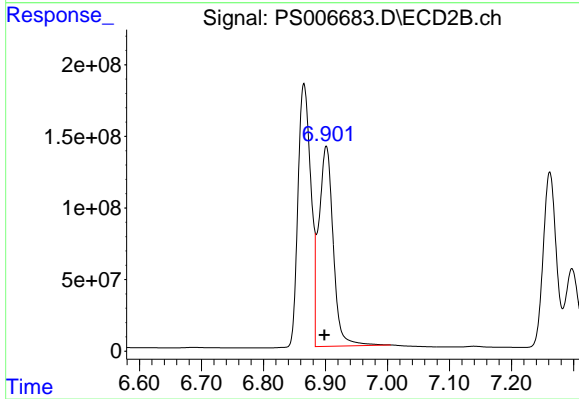
Ankita
 9/13/2019 3:53:51 PM



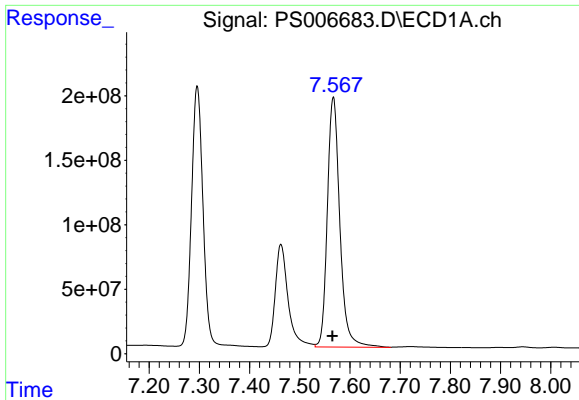
#10 Pentachlorophenol
 R.T.: 6.540 min
 Delta R.T.: 0.005 min
 Response: 1030035963
 Conc: 170.96 ng/ml



#11 2,4,5-TP (SILVEX)
 R.T.: 7.296 min
 Delta R.T.: 0.004 min
 Response: 3177592335
 Conc: 738.46 ng/ml



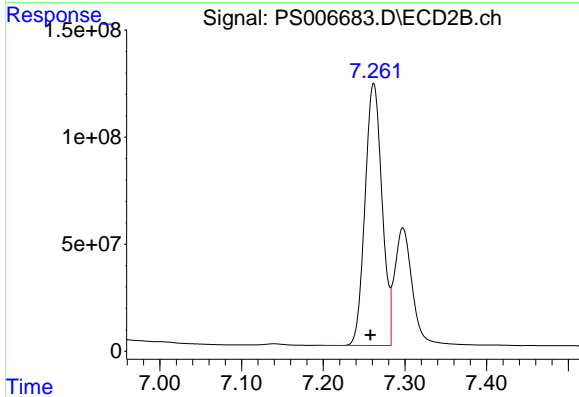
#11 2,4,5-TP (SILVEX)
 R.T.: 6.901 min
 Delta R.T.: 0.003 min
 Response: 2254929726
 Conc: 990.55 ng/ml m



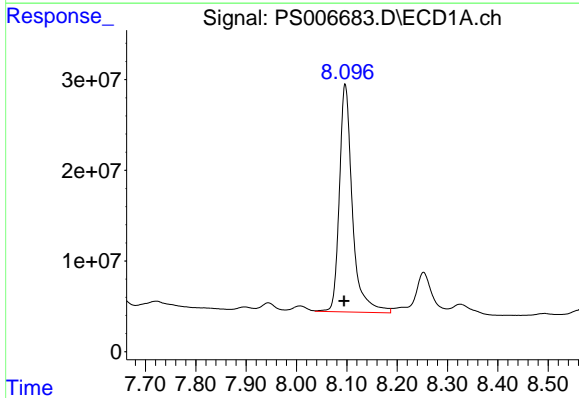
#12 2,4,5-T
 R.T.: 7.567 min
 Delta R.T.: 0.001 min
 Response: 3352475202
 Conc: 719.47 ng/ml

Instrument :
 ECD_S
ClientSampled :
 SB-4-20-22MSD

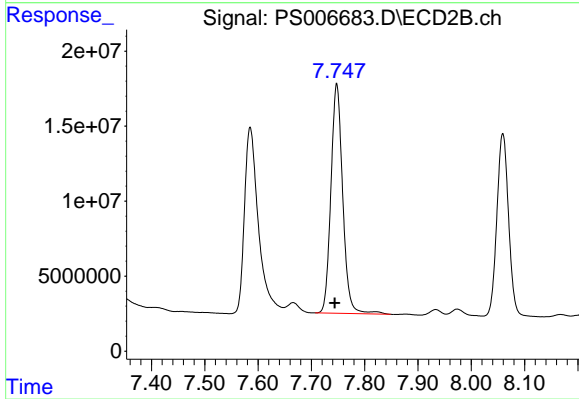
Manual Integrations
APPROVED
 Ankita
 9/13/2019 3:53:51 PM



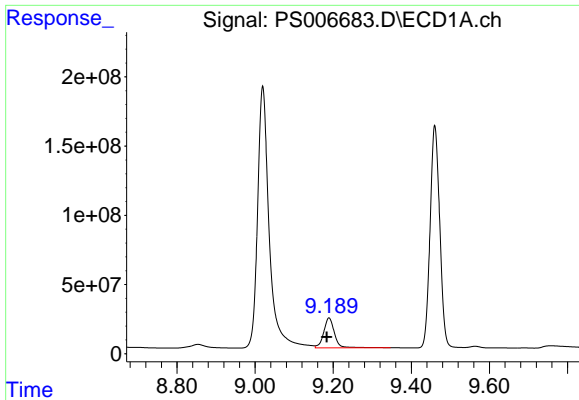
#12 2,4,5-T
 R.T.: 7.262 min
 Delta R.T.: 0.004 min
 Response: 1766536155
 Conc: 819.30 ng/ml



#13 2,4-DB
 R.T.: 8.097 min
 Delta R.T.: 0.002 min
 Response: 451892761
 Conc: 742.57 ng/ml



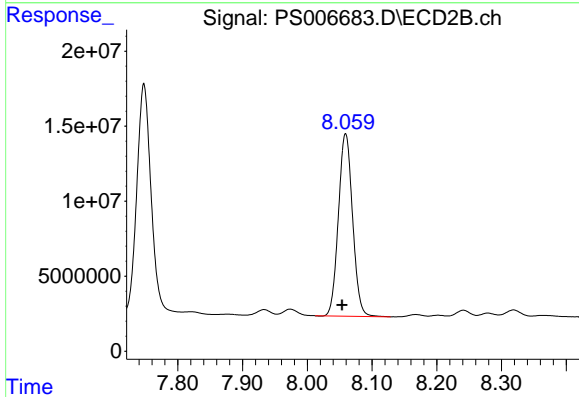
#13 2,4-DB
 R.T.: 7.748 min
 Delta R.T.: 0.004 min
 Response: 235558525
 Conc: 856.73 ng/ml



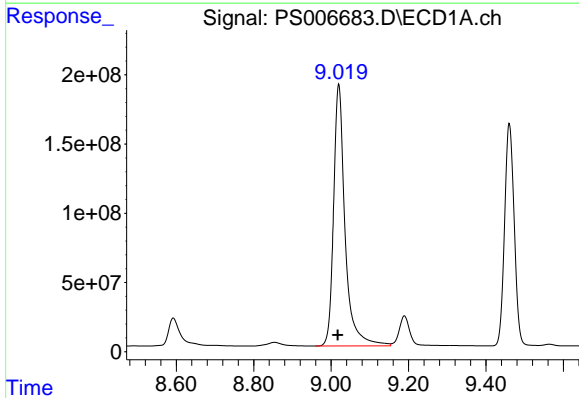
#14 DINOSEB
 R.T.: 9.189 min
 Delta R.T.: 0.006 min
 Response: 418360865
 Conc: 120.19 ng/ml

Instrument :
 ECD_S
ClientSampled :
 SB-4-20-22MSD

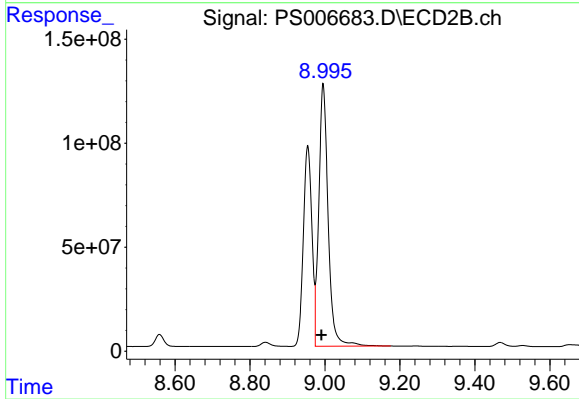
Manual Integrations
APPROVED
 Ankita
 9/13/2019 3:53:51 PM



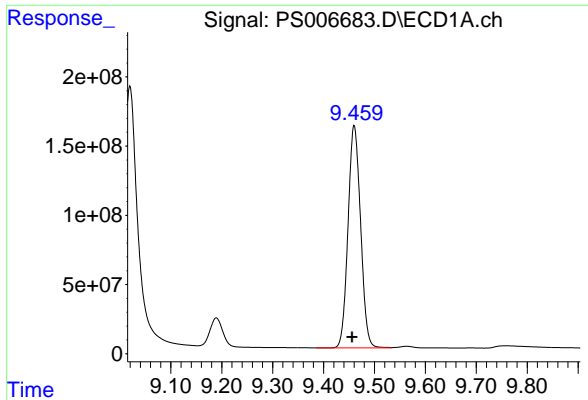
#14 DINOSEB
 R.T.: 8.059 min
 Delta R.T.: 0.005 min
 Response: 184812151
 Conc: 110.31 ng/ml



#15 Picloram
 R.T.: 9.020 min
 Delta R.T.: 0.002 min
 Response: 3901737378
 Conc: 578.40 ng/ml



#15 Picloram
 R.T.: 8.995 min
 Delta R.T.: 0.004 min
 Response: 2182830386
 Conc: 589.86 ng/ml



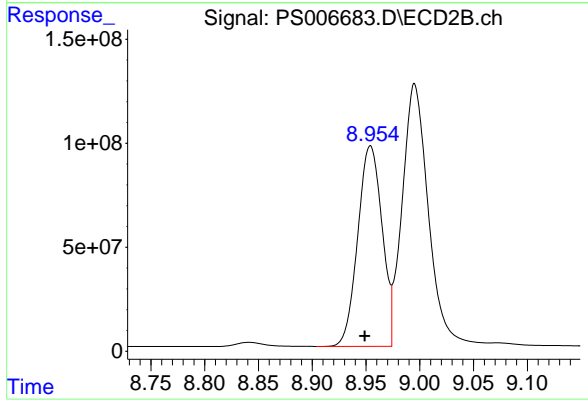
#16 DCPA

R.T.: 9.460 min
 Delta R.T.: 0.004 min
 Response: 2753584778
 Conc: 487.43 ng/ml

Instrument :
 ECD_S
 ClientSampled :
 SB-4-20-22MSD

Manual Integrations
 APPROVED

Ankita
 9/13/2019 3:53:51 PM



#16 DCPA

R.T.: 8.954 min
 Delta R.T.: 0.005 min
 Response: 1519031980
 Conc: 482.20 ng/ml