

Data Path : Z:\pestpcbsrv\HPCHEM1\ECD_S\Data\PS091322\
 Data File : PS020512.D
 Signal(s) : Signal #1: ECD1A.ch Signal #2: ECD2B.ch
 Acq On : 13 Sep 2022 23:14
 Operator : AJ\MA
 Sample : N4572-01
 Misc :
 ALS Vial : 11 Sample Multiplier: 1

Instrument :
 ECD_S
 ClientSampleId :

Integration File signal 1: autoint1.e
 Integration File signal 2: autoint2.e
 Quant Time: Sep 14 02:56:20 2022
 Quant Method : Z:\pestpcbsrv\HPCHEM1\ECD_S\Method\PS091322.M
 Quant Title : 8080.M
 QLast Update : Wed Sep 14 02:51:16 2022
 Response via : Initial Calibration
 Integrator: ChemStation

Volume Inj. : 2 µl
 Signal #1 Phase : Rtx-CLPesticides Signal #2 Phase: Rtx-CLPesticides2
 Signal #1 Info : 30M x 0.32mm x0.5 Signal #2 Info : 30M x 0.32mm x 0.25µm

Compound	RT#1	RT#2	Resp#1	Resp#2	ng/ml	ng/ml

System Monitoring Compounds						
4) S 2,4-DCAA	7.175	6.757	1354.6E6	369.7E6	393.620	434.045
Target Compounds						
1) T Dalapon	2.971	2.510	309.0E6	76114418	61.557	62.774
2) T 3,5-DICHL...	6.413	5.968	-11816775	13525638	N.D.	9.912
3) T 4-Nitroph...	7.003	6.406	-27508740	597272	112.799	1.268 #
5) T DICAMBA	7.372	6.921	66306966	-4915771	4.849	N.D. #
6) T MCPP	7.577f	7.002	74925762	6126690	7.195	2.122 #
7) T MCPA	7.656	7.212	146.5E6	45866117	9.875	10.623
8) T DICHLORPROP	8.025	7.543	149.4E6	3248507	41.440	3.220 #
9) T 2,4-D	8.290	7.829	38653640	21733266	8.316	17.112 #
10) T Pentachlo...	8.589	8.253	142.7E6	23687163	3.094	1.671 #
11) T 2,4,5-TP ...	9.128	8.657f	57174018	5110674	2.797	<MDL #
12) T 2,4,5-T	9.411	8.972	19879181	8547634	<MDL	1.569 #
13) T 2,4-DB	9.947	9.488	226.2E6	8910513	62.293	12.456 #
14) T DINOSEB	11.093	9.813	1066.1E6	40054757	58.051	9.342 #
15) T Picloram	10.966	10.809	734.3E6	153.8E6	24.400	19.093
16) T DCPA	11.424	10.735	107.2E6	23043320	4.184	3.124 #

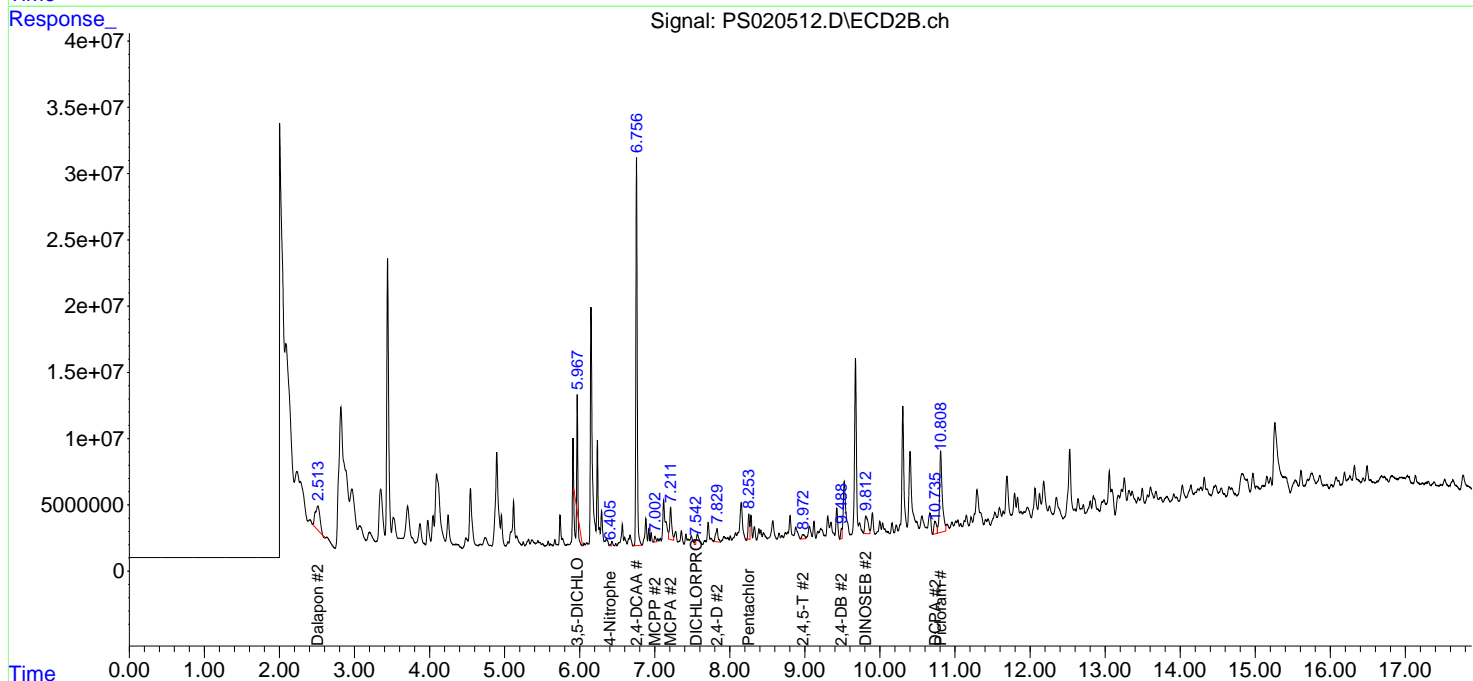
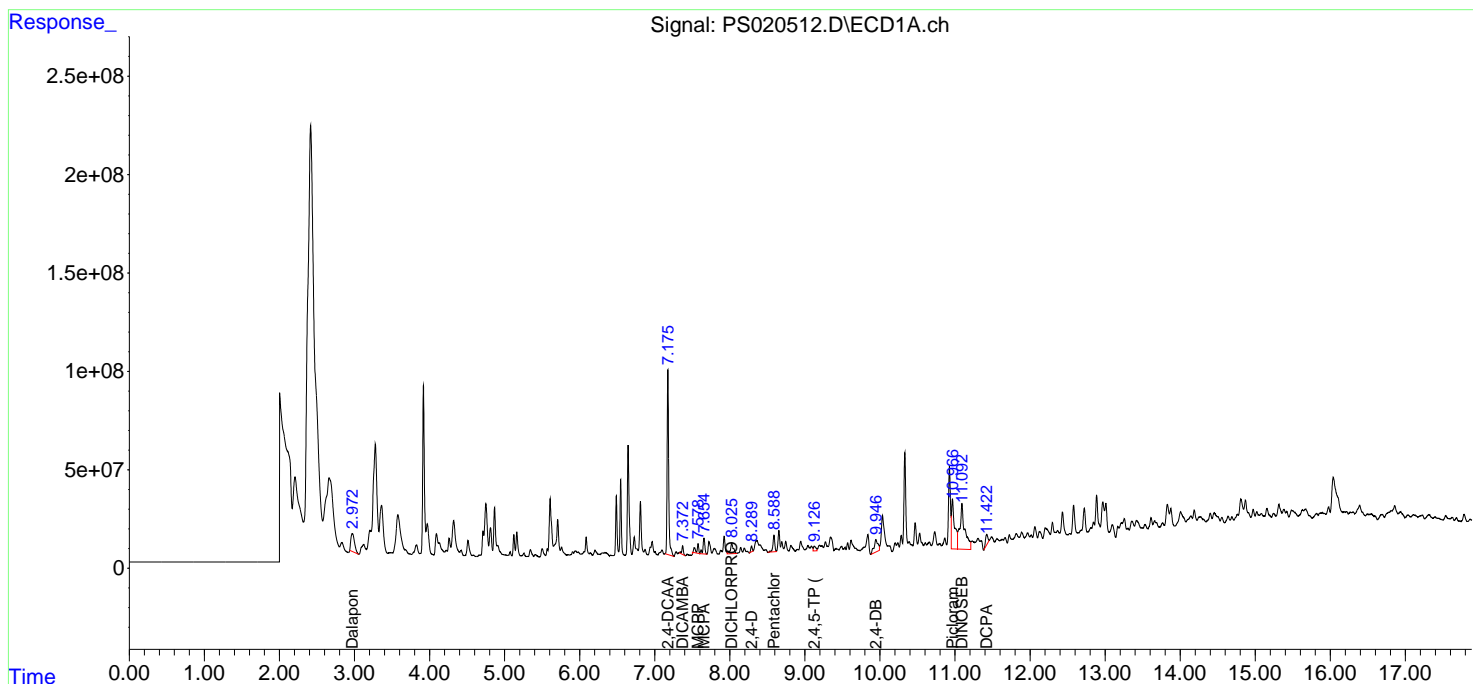
(f)=RT Delta > 1/2 Window (#)=Amounts differ by > 25% (m)=manual int.

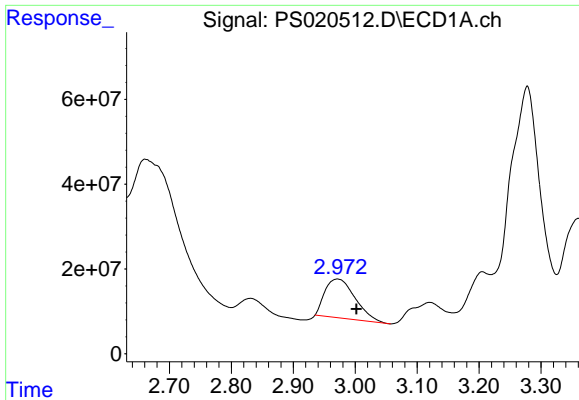
Data Path : Z:\pestpcbsrv\HPCHEM1\ECD_S\Data\PS091322\
 Data File : PS020512.D
 Signal(s) : Signal #1: ECD1A.ch Signal #2: ECD2B.ch
 Acq On : 13 Sep 2022 23:14
 Operator : AJ\MA
 Sample : N4572-01
 Misc :
 ALS Vial : 11 Sample Multiplier: 1

Instrument :
 ECD_S
 ClientSampleId :

Integration File signal 1: autoint1.e
 Integration File signal 2: autoint2.e
 Quant Time: Sep 14 02:56:20 2022
 Quant Method : Z:\pestpcbsrv\HPCHEM1\ECD_S\Method\PS091322.M
 Quant Title : 8080.M
 QLast Update : Wed Sep 14 02:51:16 2022
 Response via : Initial Calibration
 Integrator: ChemStation

Volume Inj. : 2 µl
 Signal #1 Phase : Rtx-CLPesticides Signal #2 Phase: Rtx-CLPesticides2
 Signal #1 Info : 30M x 0.32mm x0.5 Signal #2 Info : 30M x 0.32mm x 0.25µm

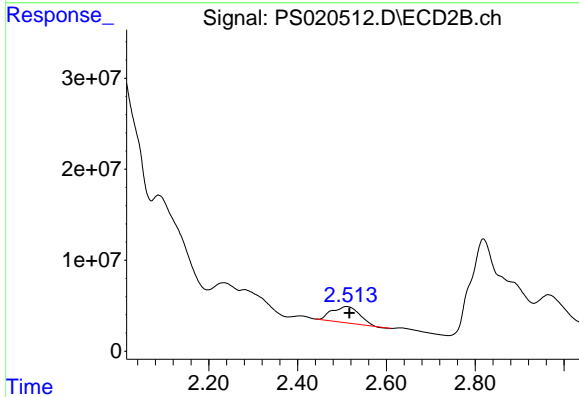




#1 Dalapon

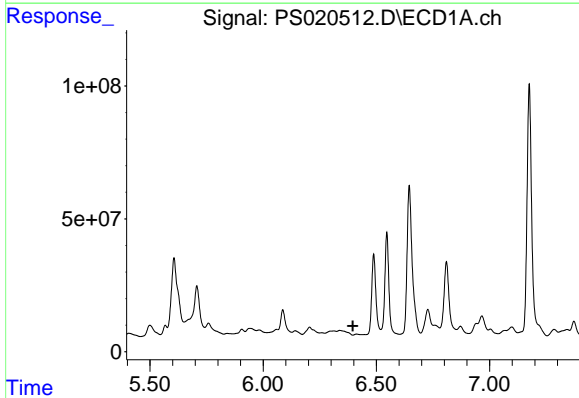
R.T.: 2.971 min
 Delta R.T.: -0.031 min
 Response: 308960193
 Conc: 61.56 ng/ml

Instrument :
 ECD_S
 ClientSampleId :



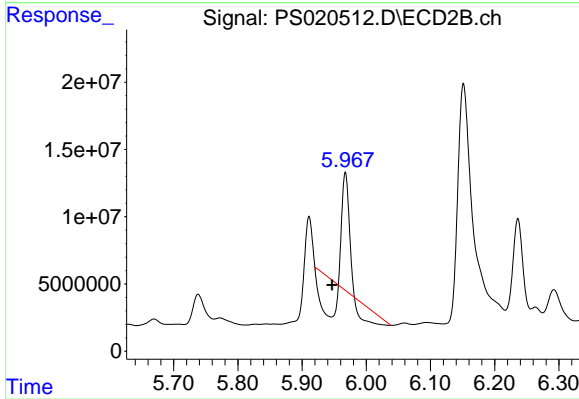
#1 Dalapon

R.T.: 2.510 min
 Delta R.T.: -0.007 min
 Response: 76114418
 Conc: 62.77 ng/ml



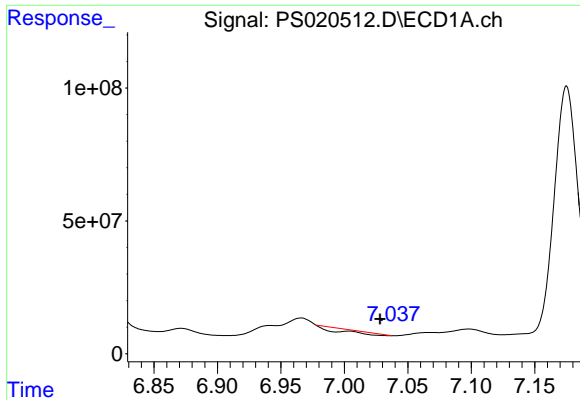
#2 3,5-DICHLOROBENZOIC ACID

R.T.: 6.413 min
 Delta R.T.: 0.017 min
 Response: -11816775
 Conc: N.D.



#2 3,5-DICHLOROBENZOIC ACID

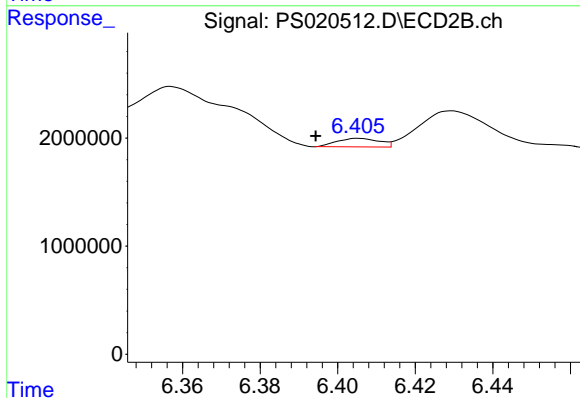
R.T.: 5.968 min
 Delta R.T.: 0.021 min
 Response: 13525638
 Conc: 9.91 ng/ml



#3 4-Nitrophenol

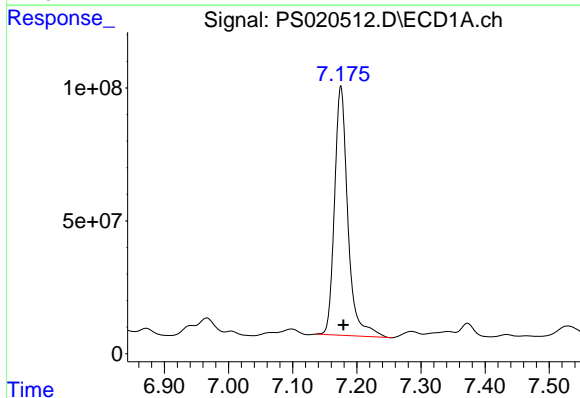
R.T.: 7.003 min
 Delta R.T.: -0.025 min
 Response: -27508740
 Conc: 112.80 ng/ml

Instrument :
 ECD_S
 ClientSampleId :



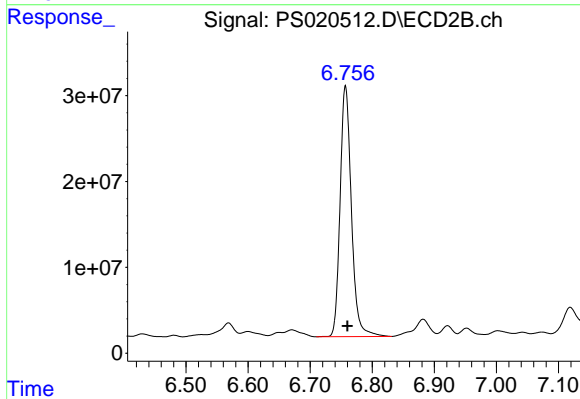
#3 4-Nitrophenol

R.T.: 6.406 min
 Delta R.T.: 0.011 min
 Response: 597272
 Conc: 1.27 ng/ml



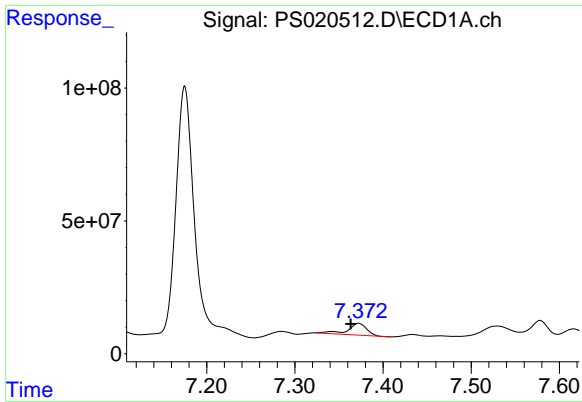
#4 2,4-DCAA

R.T.: 7.175 min
 Delta R.T.: -0.004 min
 Response: 1354637396
 Conc: 393.62 ng/ml



#4 2,4-DCAA

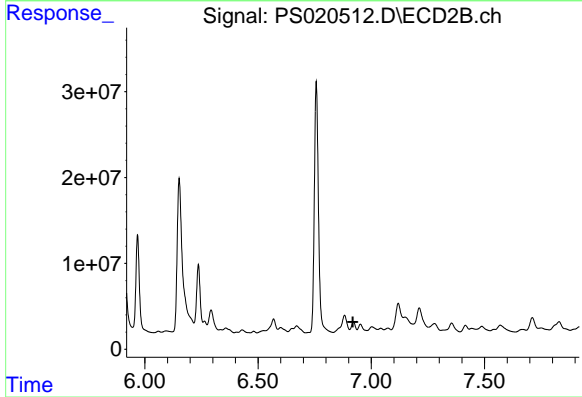
R.T.: 6.757 min
 Delta R.T.: -0.003 min
 Response: 369674450
 Conc: 434.05 ng/ml



#5 DICAMBA

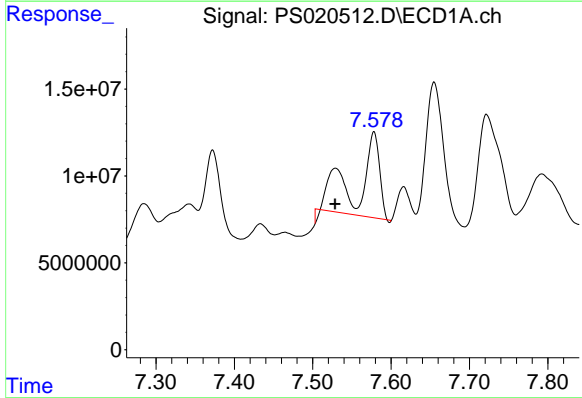
R.T.: 7.372 min
 Delta R.T.: 0.009 min
 Response: 66306966
 Conc: 4.85 ng/ml

Instrument :
 ECD_S
 ClientSampleId :



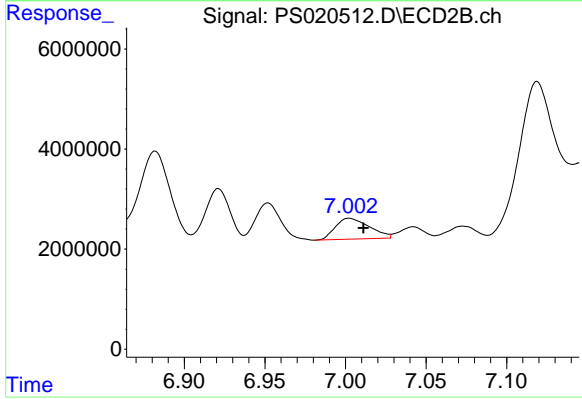
#5 DICAMBA

R.T.: 6.921 min
 Delta R.T.: 0.002 min
 Response: -4915771
 Conc: N.D.



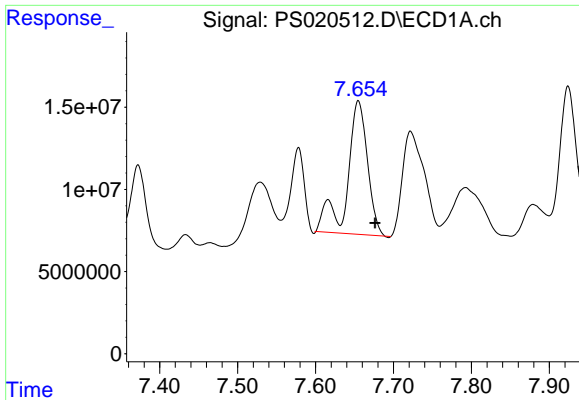
#6 MCPP

R.T.: 7.577 min
 Delta R.T.: 0.049 min
 Response: 74925762
 Conc: 7.20 ug/ml



#6 MCPP

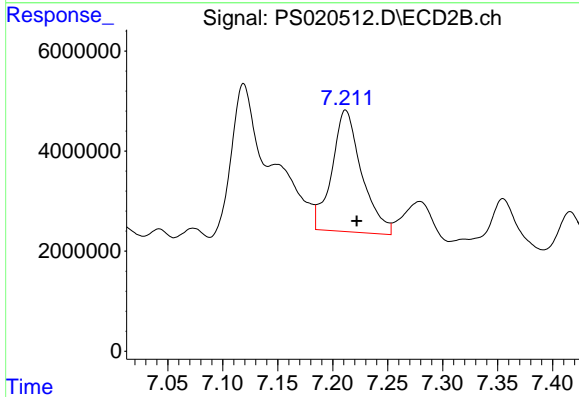
R.T.: 7.002 min
 Delta R.T.: -0.009 min
 Response: 6126690
 Conc: 2.12 ug/ml



#7 MCPA

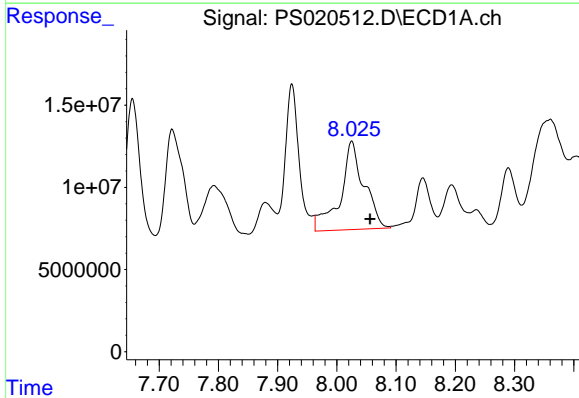
R.T.: 7.656 min
 Delta R.T.: -0.021 min
 Response: 146455107
 Conc: 9.87 ug/ml

Instrument :
 ECD_S
 ClientSampleId :



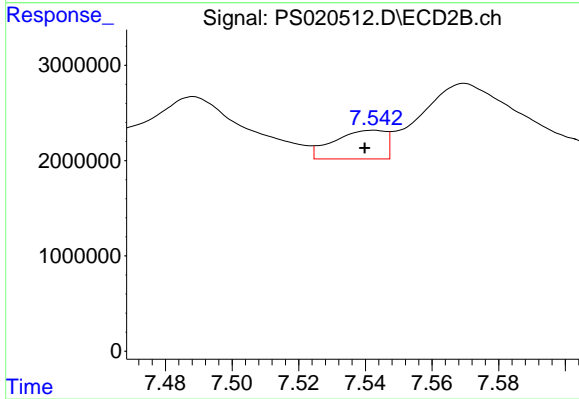
#7 MCPA

R.T.: 7.212 min
 Delta R.T.: -0.010 min
 Response: 45866117
 Conc: 10.62 ug/ml



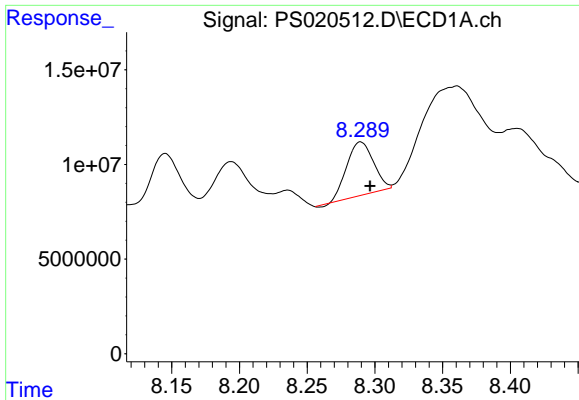
#8 DICHLORPROP

R.T.: 8.025 min
 Delta R.T.: -0.031 min
 Response: 149415345
 Conc: 41.44 ng/ml



#8 DICHLORPROP

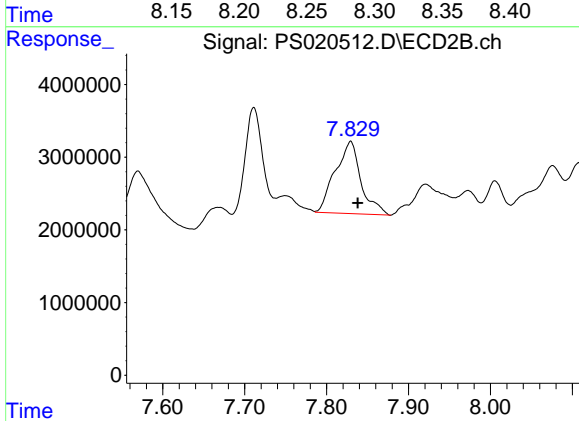
R.T.: 7.543 min
 Delta R.T.: 0.003 min
 Response: 3248507
 Conc: 3.22 ng/ml



#9 2,4-D

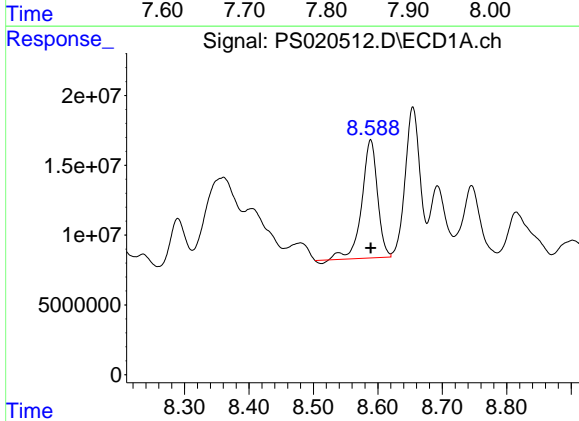
R.T.: 8.290 min
 Delta R.T.: -0.006 min
 Response: 38653640
 Conc: 8.32 ng/ml

Instrument :
 ECD_S
 ClientSampleId :



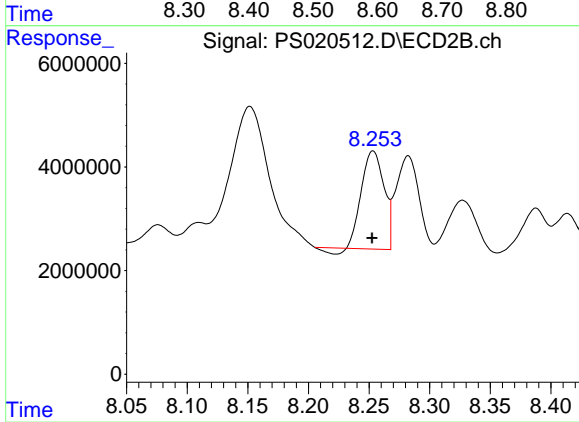
#9 2,4-D

R.T.: 7.829 min
 Delta R.T.: -0.009 min
 Response: 21733266
 Conc: 17.11 ng/ml



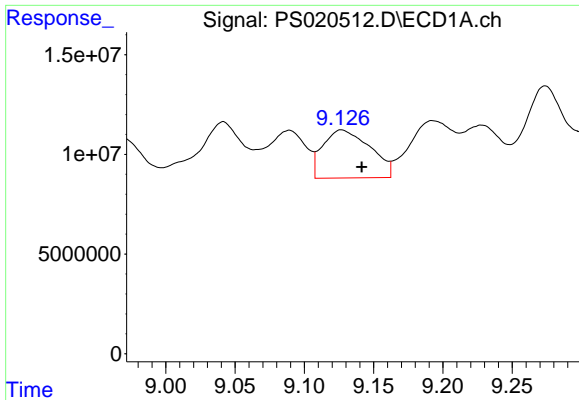
#10 Pentachlorophenol

R.T.: 8.589 min
 Delta R.T.: 0.000 min
 Response: 142687167
 Conc: 3.09 ng/ml



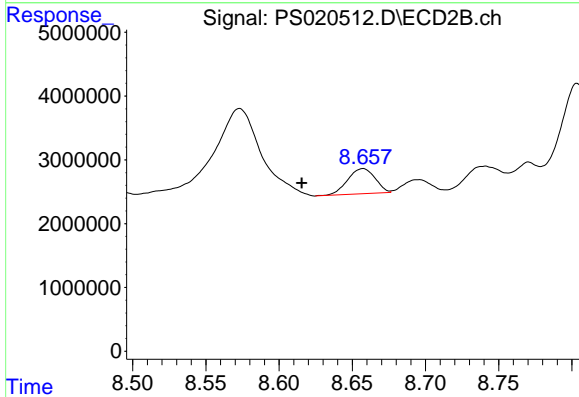
#10 Pentachlorophenol

R.T.: 8.253 min
 Delta R.T.: 0.000 min
 Response: 23687163
 Conc: 1.67 ng/ml

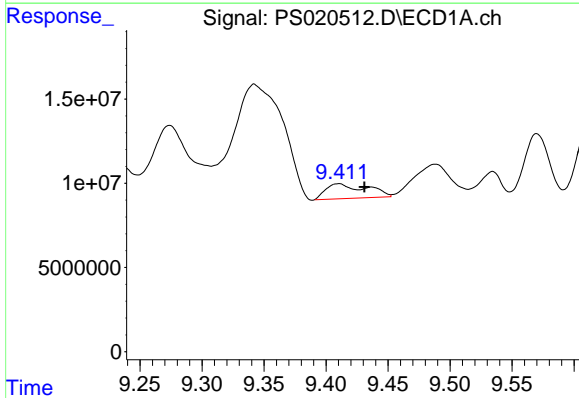


#11 2,4,5-TP (SILVEX)
 R.T.: 9.128 min
 Delta R.T.: -0.013 min
 Response: 57174018
 Conc: 2.80 ng/ml

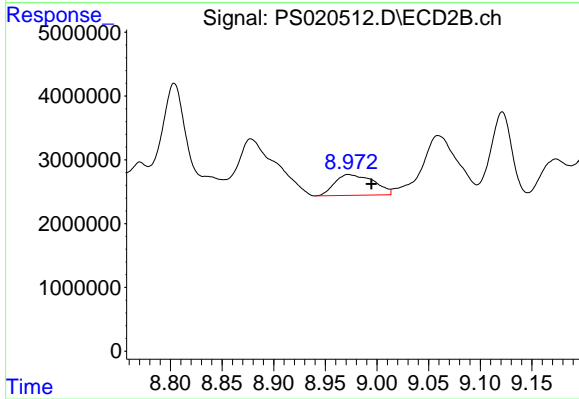
Instrument :
 ECD_S
 ClientSampleId :



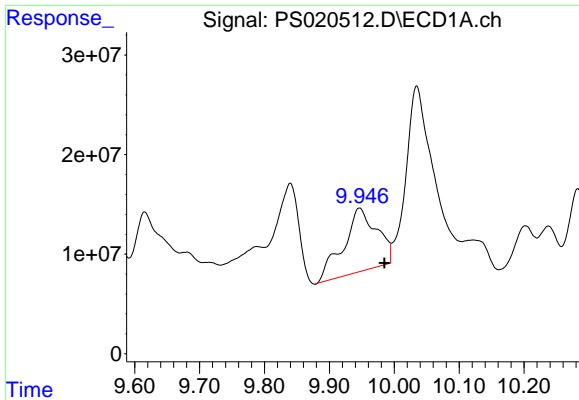
#11 2,4,5-TP (SILVEX)
 R.T.: 8.657 min
 Delta R.T.: 0.042 min
 Response: 5110674
 Conc: N.D.



#12 2,4,5-T
 R.T.: 9.411 min
 Delta R.T.: -0.020 min
 Response: 19879181
 Conc: N.D.



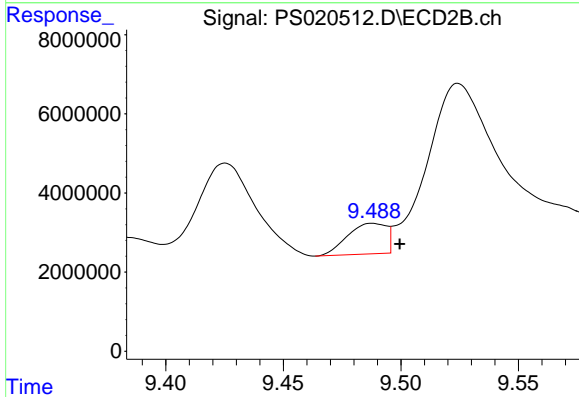
#12 2,4,5-T
 R.T.: 8.972 min
 Delta R.T.: -0.022 min
 Response: 8547634
 Conc: 1.57 ng/ml



#13 2,4-DB

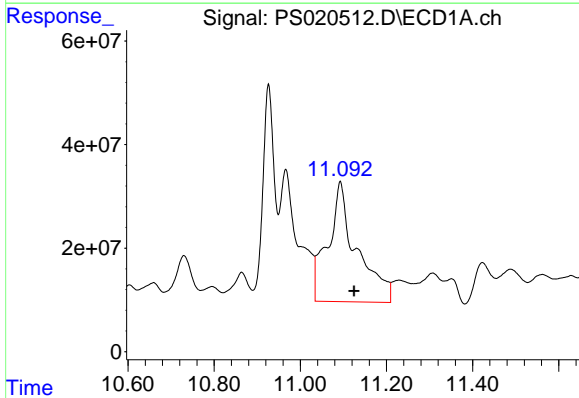
R.T.: 9.947 min
 Delta R.T.: -0.038 min
 Response: 226207190
 Conc: 62.29 ng/ml

Instrument :
 ECD_S
 ClientSampleId :



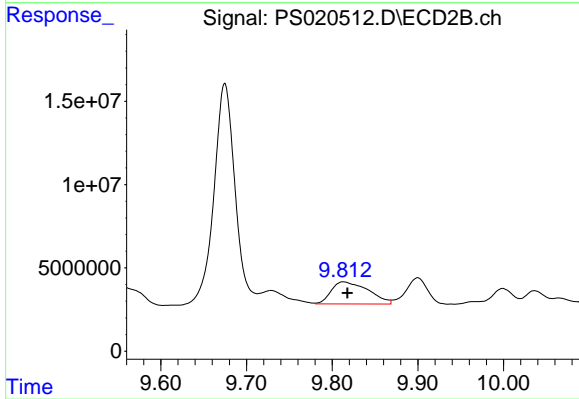
#13 2,4-DB

R.T.: 9.488 min
 Delta R.T.: -0.012 min
 Response: 8910513
 Conc: 12.46 ng/ml



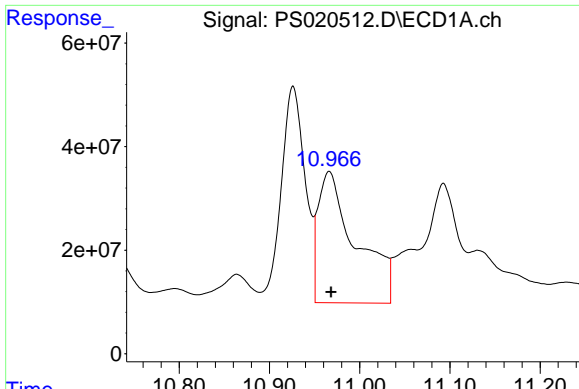
#14 DINOSEB

R.T.: 11.093 min
 Delta R.T.: -0.032 min
 Response: 1066125125
 Conc: 58.05 ng/ml



#14 DINOSEB

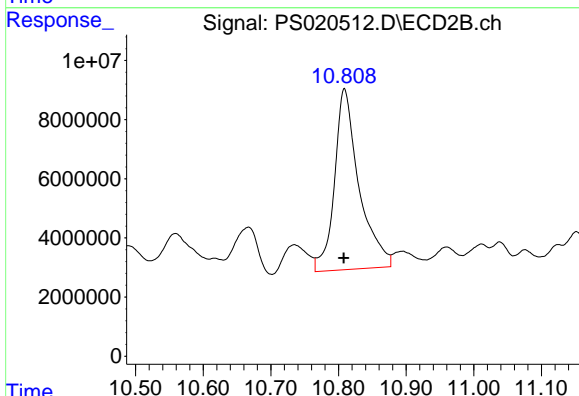
R.T.: 9.813 min
 Delta R.T.: -0.005 min
 Response: 40054757
 Conc: 9.34 ng/ml



#15 Picloram

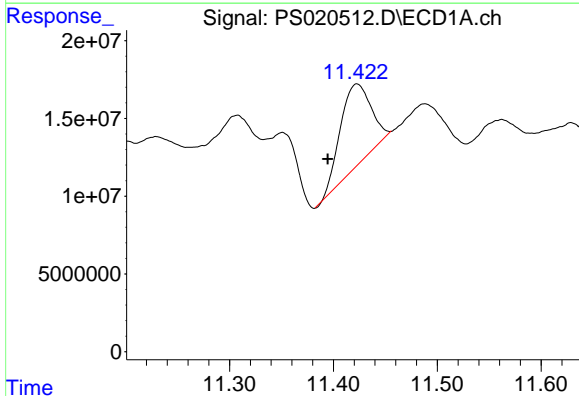
R.T.: 10.966 min
 Delta R.T.: -0.002 min
 Response: 734279738
 Conc: 24.40 ng/ml

Instrument :
 ECD_S
 ClientSampleId :



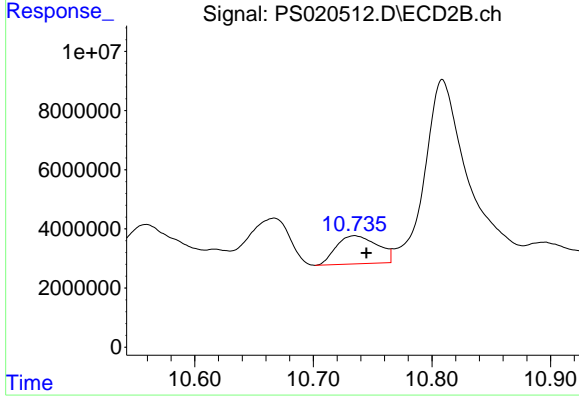
#15 Picloram

R.T.: 10.809 min
 Delta R.T.: 0.001 min
 Response: 153758752
 Conc: 19.09 ng/ml



#16 DCPA

R.T.: 11.424 min
 Delta R.T.: 0.029 min
 Response: 107181031
 Conc: 4.18 ng/ml



#16 DCPA

R.T.: 10.735 min
 Delta R.T.: -0.010 min
 Response: 23043320
 Conc: 3.12 ng/ml