

Data Path : Z:\pestpcbsrv\HPCHEM1\ECD_L\Data\PL091418\
 Data File : PL039931.D
 Signal(s) : Signal #1: ECD1A.ch Signal #2: ECD2B.ch
 Acq On : 15 Sep 2018 02:59
 Operator : AJ\SJ
 Sample : PB112839BS
 Misc :
 ALS Vial : 43 Sample Multiplier: 1

Instrument :
 ECD_S
 ClientSampled :

Integration File signal 1: autoint1.e
 Integration File signal 2: autoint2.e
 Quant Time: Sep 15 04:24:55 2018
 Quant Method : Z:\pestpcbsrv\HPCHEM1\ECD_L\methods\PL091418.M
 Quant Title : GC Extractables
 QLast Update : Fri Sep 14 23:10:39 2018
 Response via : Initial Calibration
 Integrator: ChemStation

Volume Inj. : 2 µl
 Signal #1 Phase : ZB-MR1 Signal #2 Phase: ZB-MR2
 Signal #1 Info : 30M x 0.32mm x0.5 Signal #2 Info : 30M x 0.32mm x0.25µm

Compound	RT#1	RT#2	Resp#1	Resp#2	ng/ml	ng/ml
System Monitoring Compounds						
1) SA Tetrachlo...	3.300	3.904	129.4E6	55275397	16.685	17.323
28) SA Decachlor...	7.952	8.889	136.0E6	48350742	16.321	17.802
Target Compounds						
2) A alpha-BHC	3.727	4.282	547.7E6	217.4E6	43.170	42.005
3) MA gamma-BHC...	4.002	4.560	495.3E6	194.1E6	43.276	42.631
4) MA Heptachlor	4.283	5.066	496.2E6	194.5E6	43.013	44.991
5) MB Aldrin	4.521	5.367	483.1E6	177.0E6	43.826	40.751
6) B beta-BHC	4.257	4.722	211.9E6	83663523	43.088	42.636
7) B delta-BHC	4.449	4.935	518.0E6	195.6E6	44.051	49.170
8) B Heptachlo...	4.956	5.746	436.2E6	166.5E6	42.806	42.087
9) A Endosulfan I	5.285	6.097	429.6E6	157.7E6	43.360	44.423
10) B gamma-Chl...	5.177	5.978	486.5E6	173.5E6	43.980	45.849
11) B alpha-Chl...	5.233	6.051	461.2E6	177.6E6	43.173	44.842
12) B 4,4'-DDE	5.401	6.207	457.2E6	171.7E6	43.140	45.151
13) MA Dieldrin	5.523	6.350	477.3E6	167.9E6	43.032	44.126
14) MA Endrin	5.776	6.564	401.7E6	129.8E6	39.143	39.885
15) B Endosulfa...	6.051	6.768	404.4E6	140.0E6	42.206	42.400
16) A 4,4'-DDD	5.911	6.688	376.4E6	130.6E6	43.417	45.170
17) MA 4,4'-DDT	6.144	6.986	349.4E6	128.8E6	38.598	43.058
18) B Endrin al...	6.218	6.891	327.2E6	121.7E6	42.683	46.341
19) B Endosulfa...	6.429	7.112	397.8E6	131.5E6	43.403	44.781
20) A Methoxychlor	6.692	7.442	191.6E6	59206735	41.335	41.835
21) B Endrin ke...	6.910	7.575	435.8E6	136.5E6	44.624	47.907
23) Chlordane-1	0.000	4.935	0	195.6E6	N.D.	1263.089 #
24) Chlordane-2	0.000	5.367	0	177.0E6	N.D.	1161.311 #
25) Chlordane-3	5.177	5.978	486.5E6	173.5E6	396.483	338.945
26) Chlordane-4	5.233	6.051	461.2E6	177.6E6	420.726	286.995 #
27) Chlordane-5	6.051	6.891	404.4E6	121.7E6	1090.690	1048.748

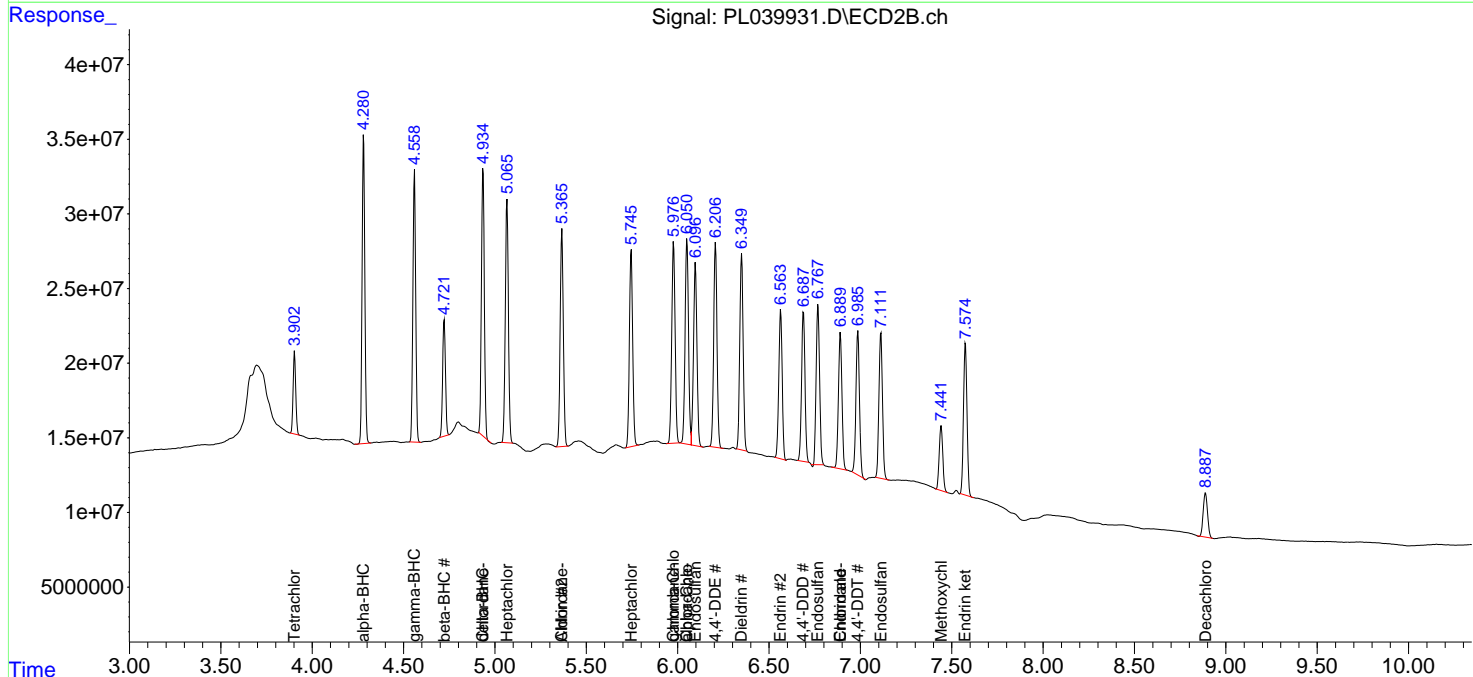
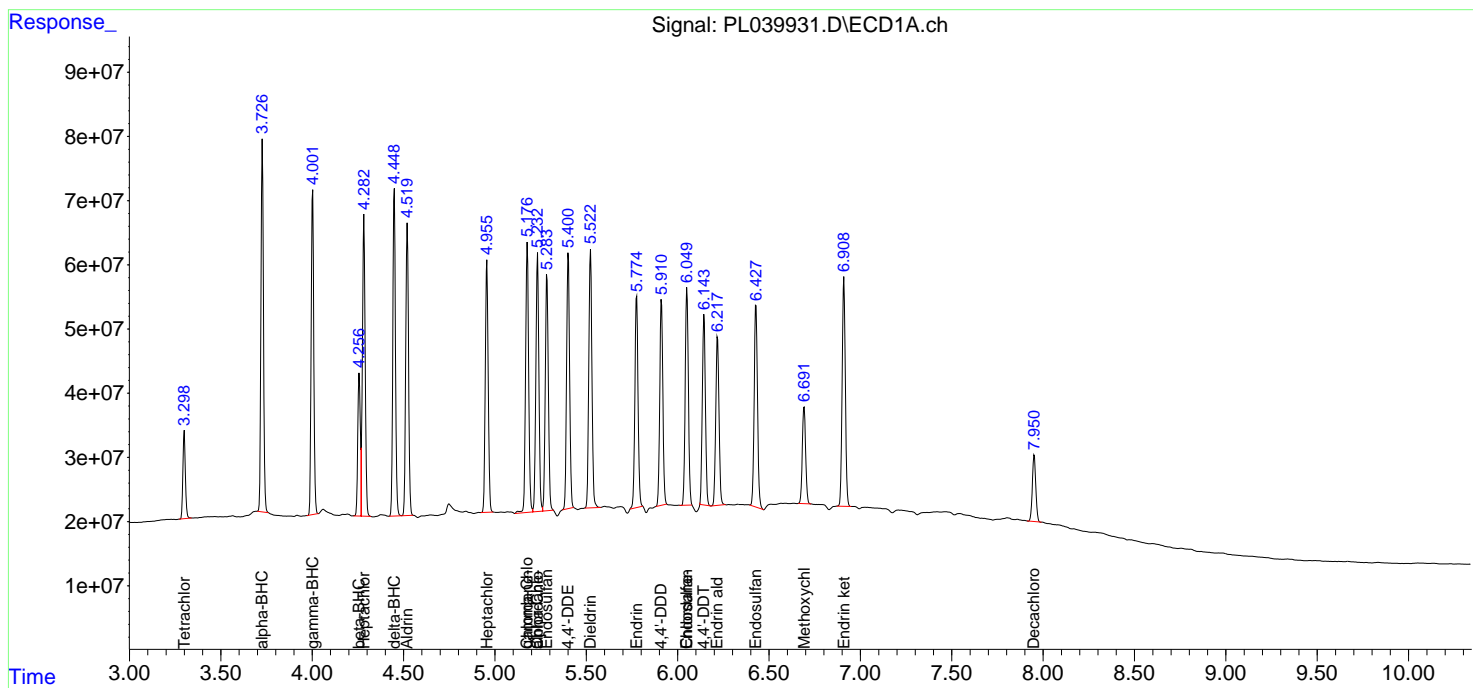
(f)=RT Delta > 1/2 Window (#)=Amounts differ by > 25% (m)=manual int.

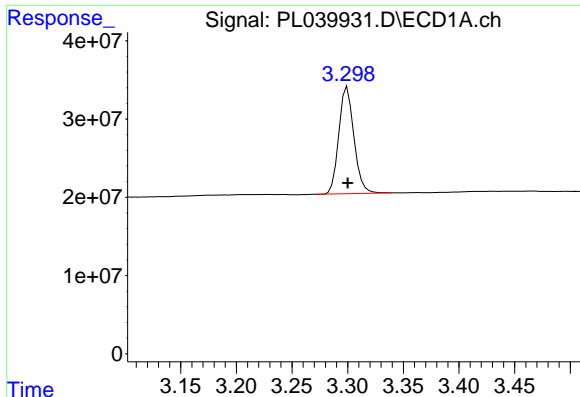
Data Path : Z:\pestpcbsrv\HPCHEM1\ECD_L\Data\PL091418\
 Data File : PL039931.D
 Signal(s) : Signal #1: ECD1A.ch Signal #2: ECD2B.ch
 Acq On : 15 Sep 2018 02:59
 Operator : AJ\SJ
 Sample : PB112839BS
 Misc :
 ALS Vial : 43 Sample Multiplier: 1

Instrument :
 ECD_S
 ClientSampled :

Integration File signal 1: autoint1.e
 Integration File signal 2: autoint2.e
 Quant Time: Sep 15 04:24:55 2018
 Quant Method : Z:\pestpcbsrv\HPCHEM1\ECD_L\methods\PL091418.M
 Quant Title : GC Extractables
 QLast Update : Fri Sep 14 23:10:39 2018
 Response via : Initial Calibration
 Integrator: ChemStation

Volume Inj. : 2 µl
 Signal #1 Phase : ZB-MR1 Signal #2 Phase: ZB-MR2
 Signal #1 Info : 30M x 0.32mm x0.5 Signal #2 Info : 30M x 0.32mm x0.25µm

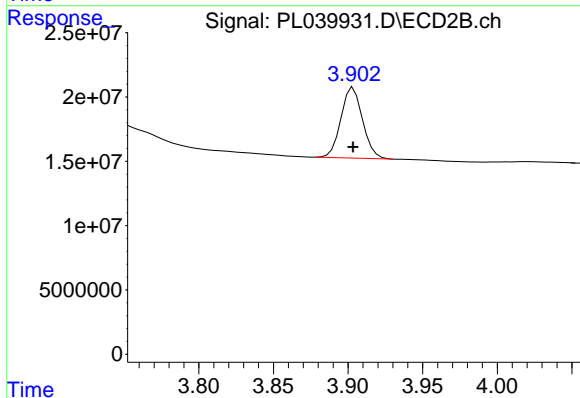




#1 Tetrachloro-m-xylene

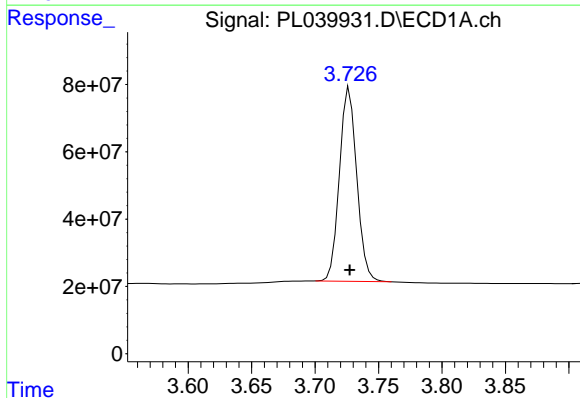
R.T.: 3.300 min
 Delta R.T.: 0.000 min
 Response: 129392916
 Conc: 16.69 ng/ml

Instrument :
 ECD_S
 ClientSampleId :



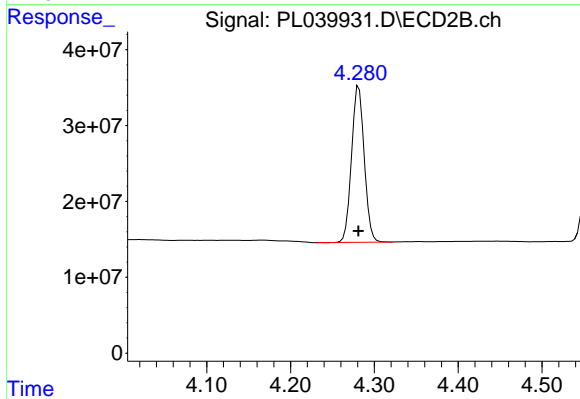
#1 Tetrachloro-m-xylene

R.T.: 3.904 min
 Delta R.T.: 0.000 min
 Response: 55275397
 Conc: 17.32 ng/ml



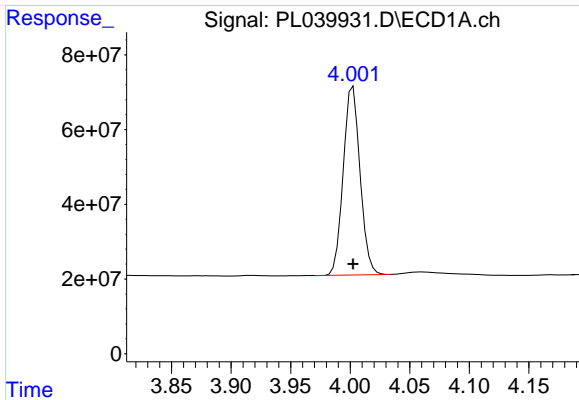
#2 alpha-BHC

R.T.: 3.727 min
 Delta R.T.: 0.000 min
 Response: 547666529
 Conc: 43.17 ng/ml



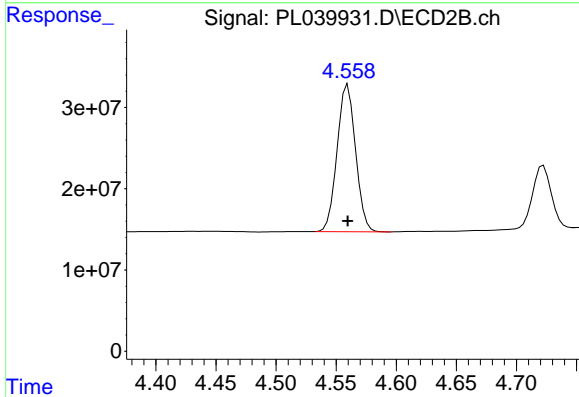
#2 alpha-BHC

R.T.: 4.282 min
 Delta R.T.: 0.000 min
 Response: 217364260
 Conc: 42.01 ng/ml

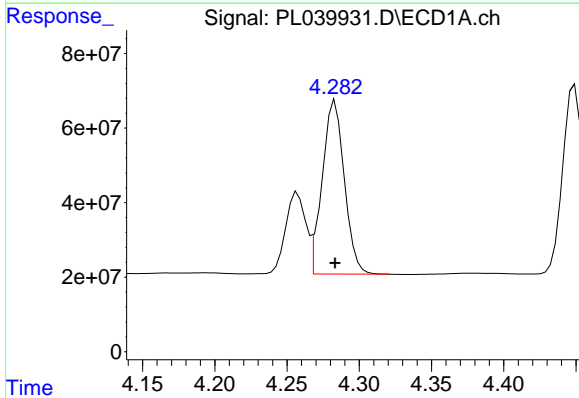


#3 gamma-BHC (Lindane)
 R.T.: 4.002 min
 Delta R.T.: 0.000 min
 Response: 495259779
 Conc: 43.28 ng/ml

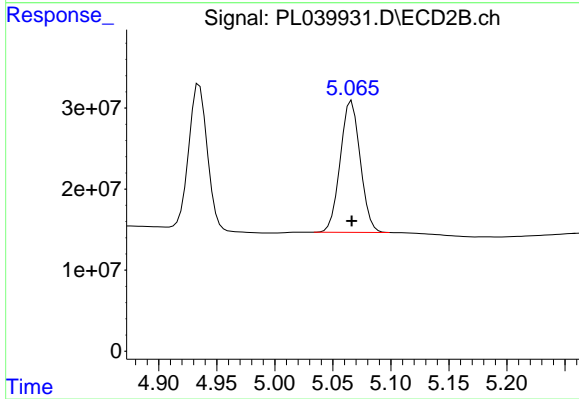
Instrument :
 ECD_S
 ClientSampled :



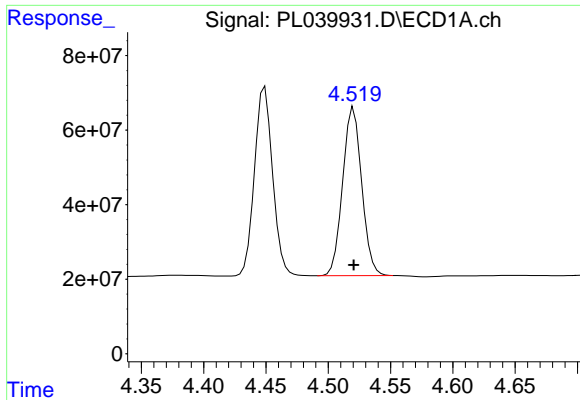
#3 gamma-BHC (Lindane)
 R.T.: 4.560 min
 Delta R.T.: 0.000 min
 Response: 194067206
 Conc: 42.63 ng/ml



#4 Heptachlor
 R.T.: 4.283 min
 Delta R.T.: 0.000 min
 Response: 496205441
 Conc: 43.01 ng/ml

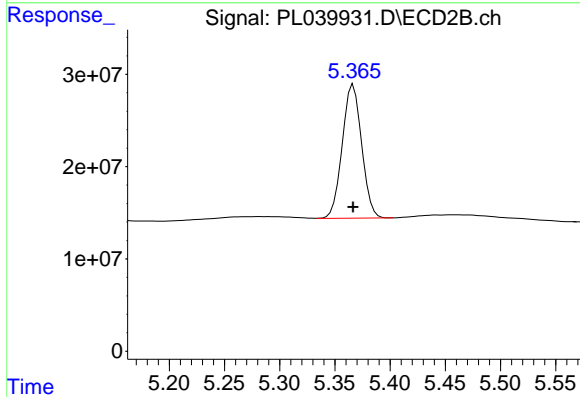


#4 Heptachlor
 R.T.: 5.066 min
 Delta R.T.: 0.000 min
 Response: 194508066
 Conc: 44.99 ng/ml

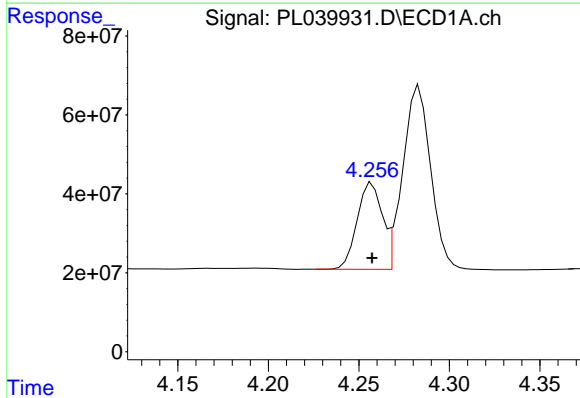


#5 Aldrin
 R.T.: 4.521 min
 Delta R.T.: 0.000 min
 Response: 483056440
 Conc: 43.83 ng/ml

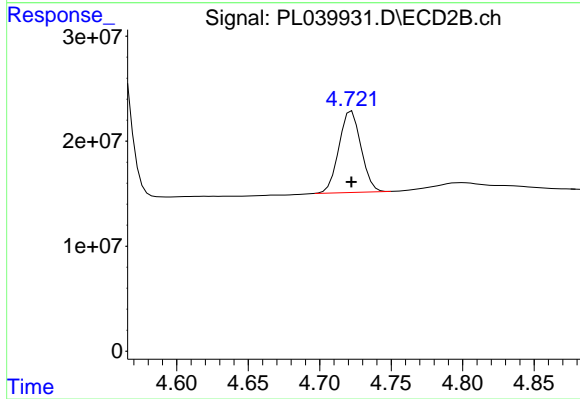
Instrument :
 ECD_S
 ClientSampled :



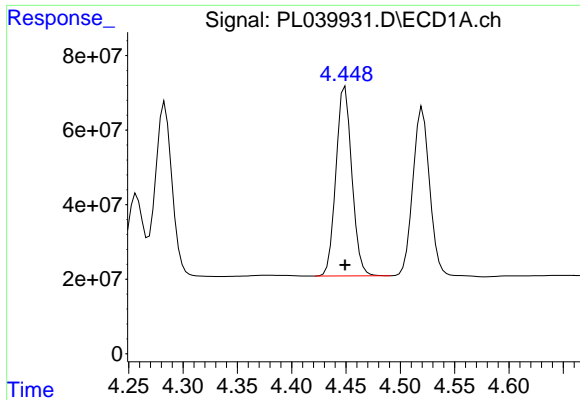
#5 Aldrin
 R.T.: 5.367 min
 Delta R.T.: 0.000 min
 Response: 176989632
 Conc: 40.75 ng/ml



#6 beta-BHC
 R.T.: 4.257 min
 Delta R.T.: 0.000 min
 Response: 211908302
 Conc: 43.09 ng/ml



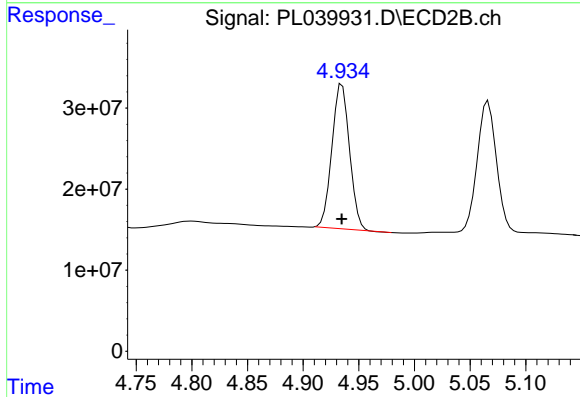
#6 beta-BHC
 R.T.: 4.722 min
 Delta R.T.: 0.000 min
 Response: 83663523
 Conc: 42.64 ng/ml



#7 delta-BHC

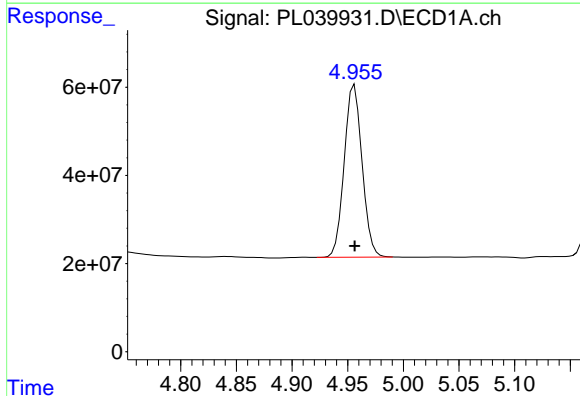
R.T.: 4.449 min
 Delta R.T.: 0.000 min
 Response: 518001331
 Conc: 44.05 ng/ml

Instrument :
 ECD_S
 ClientSampleId :



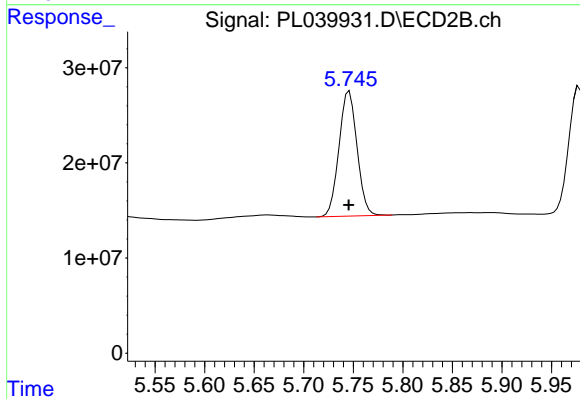
#7 delta-BHC

R.T.: 4.935 min
 Delta R.T.: 0.000 min
 Response: 195584478
 Conc: 49.17 ng/ml



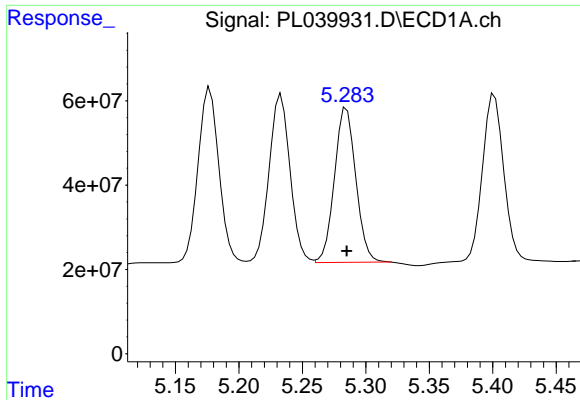
#8 Heptachlor epoxide

R.T.: 4.956 min
 Delta R.T.: 0.000 min
 Response: 436188209
 Conc: 42.81 ng/ml



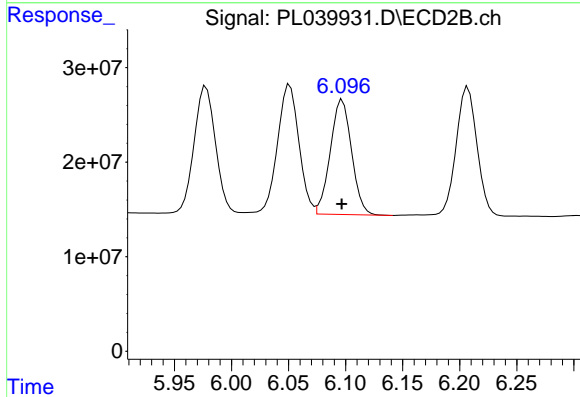
#8 Heptachlor epoxide

R.T.: 5.746 min
 Delta R.T.: 0.000 min
 Response: 166460030
 Conc: 42.09 ng/ml

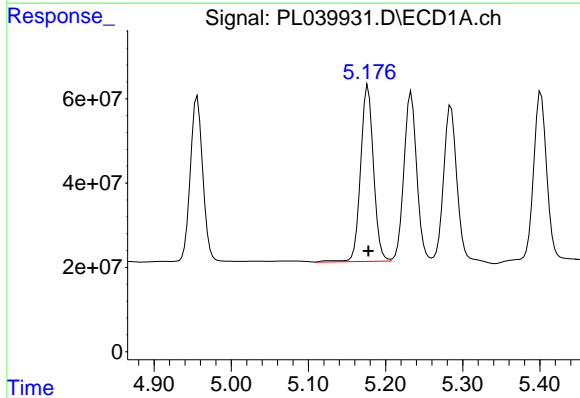


#9 Endosulfan I
 R.T.: 5.285 min
 Delta R.T.: 0.000 min
 Response: 429635663
 Conc: 43.36 ng/ml

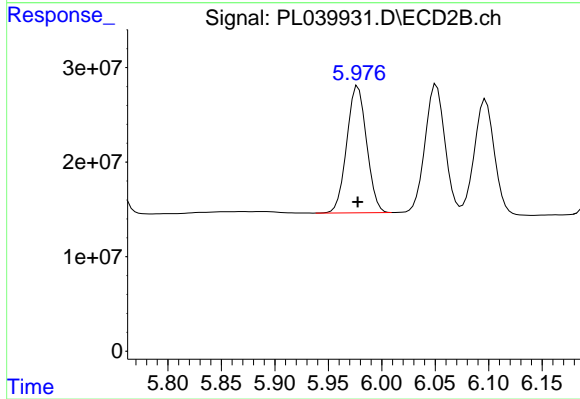
Instrument :
 ECD_S
 ClientSampleId :



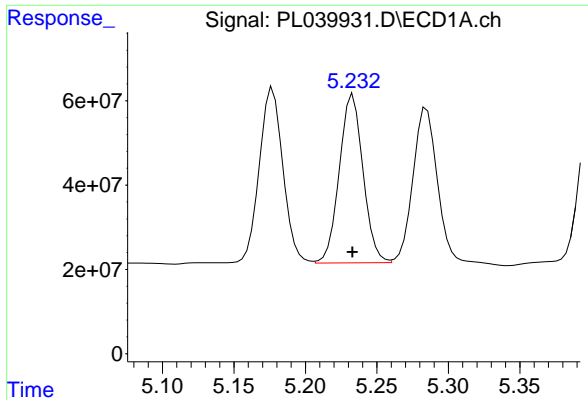
#9 Endosulfan I
 R.T.: 6.097 min
 Delta R.T.: 0.000 min
 Response: 157748007
 Conc: 44.42 ng/ml



#10 gamma-Chlordane
 R.T.: 5.177 min
 Delta R.T.: 0.000 min
 Response: 486534045
 Conc: 43.98 ng/ml



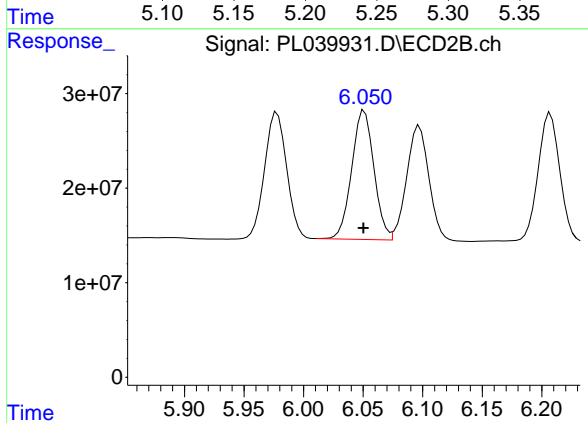
#10 gamma-Chlordane
 R.T.: 5.978 min
 Delta R.T.: 0.000 min
 Response: 173519802
 Conc: 45.85 ng/ml



#11 alpha-Chlordane

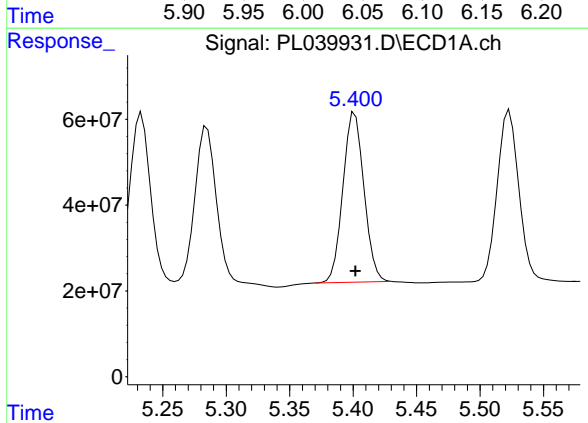
R.T.: 5.233 min
 Delta R.T.: 0.000 min
 Response: 461217334
 Conc: 43.17 ng/ml

Instrument :
 ECD_S
 ClientSampleId :



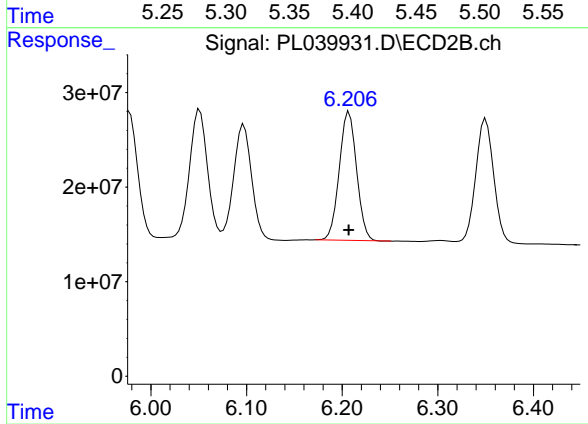
#11 alpha-Chlordane

R.T.: 6.051 min
 Delta R.T.: 0.000 min
 Response: 177638337
 Conc: 44.84 ng/ml



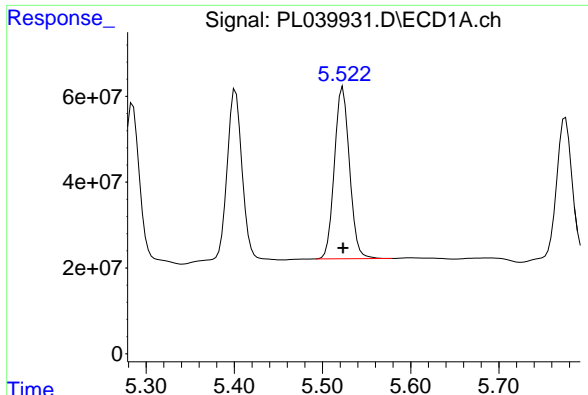
#12 4,4'-DDE

R.T.: 5.401 min
 Delta R.T.: 0.000 min
 Response: 457231142
 Conc: 43.14 ng/ml



#12 4,4'-DDE

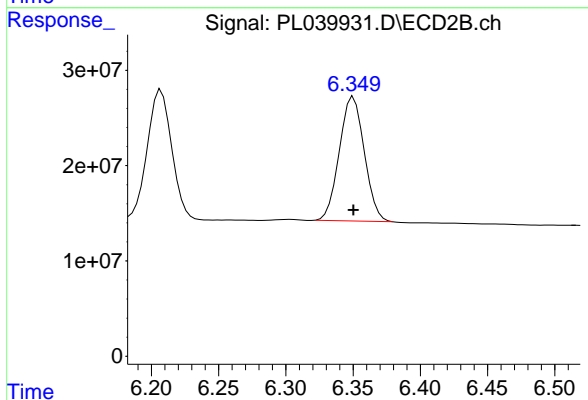
R.T.: 6.207 min
 Delta R.T.: 0.000 min
 Response: 171738094
 Conc: 45.15 ng/ml



#13 Dieldrin

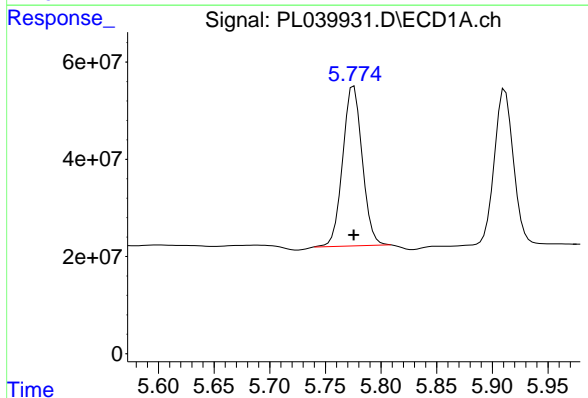
R.T.: 5.523 min
 Delta R.T.: 0.000 min
 Response: 477251204
 Conc: 43.03 ng/ml

Instrument :
 ECD_S
 ClientSampled :



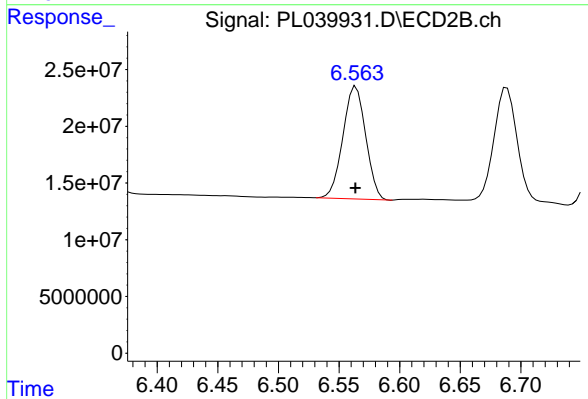
#13 Dieldrin

R.T.: 6.350 min
 Delta R.T.: 0.000 min
 Response: 167905039
 Conc: 44.13 ng/ml



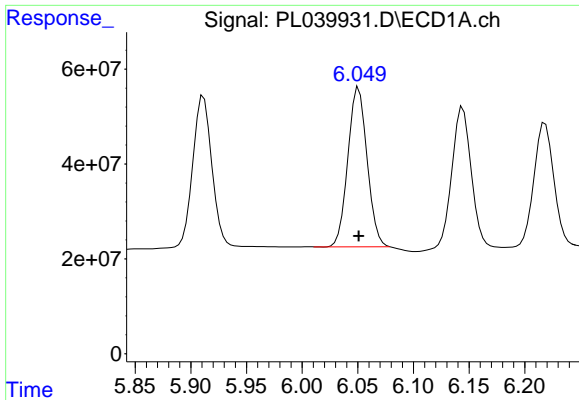
#14 Endrin

R.T.: 5.776 min
 Delta R.T.: 0.000 min
 Response: 401669970
 Conc: 39.14 ng/ml



#14 Endrin

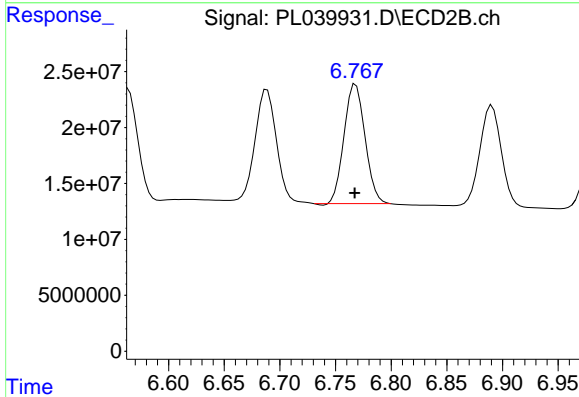
R.T.: 6.564 min
 Delta R.T.: 0.000 min
 Response: 129844046
 Conc: 39.89 ng/ml



#15 Endosulfan II

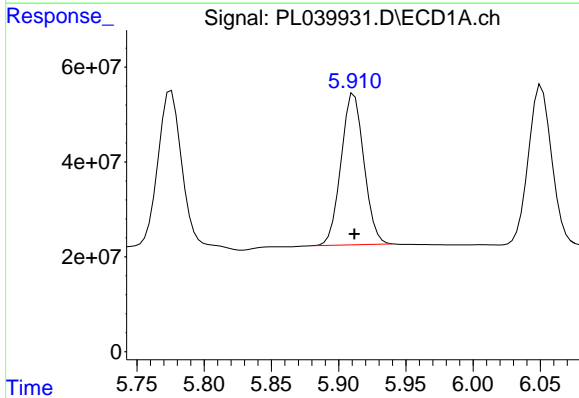
R.T.: 6.051 min
 Delta R.T.: 0.000 min
 Response: 404375940
 Conc: 42.21 ng/ml

Instrument :
 ECD_S
 ClientSampled :



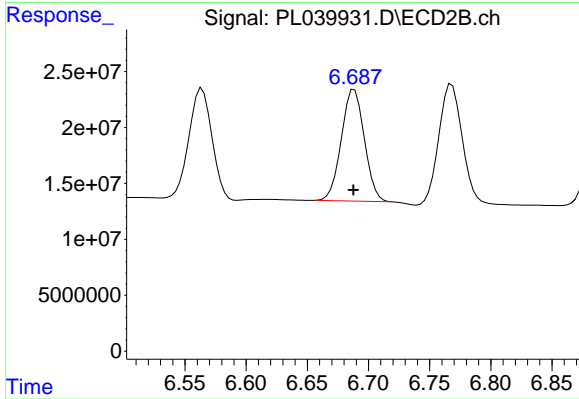
#15 Endosulfan II

R.T.: 6.768 min
 Delta R.T.: 0.000 min
 Response: 140045799
 Conc: 42.40 ng/ml



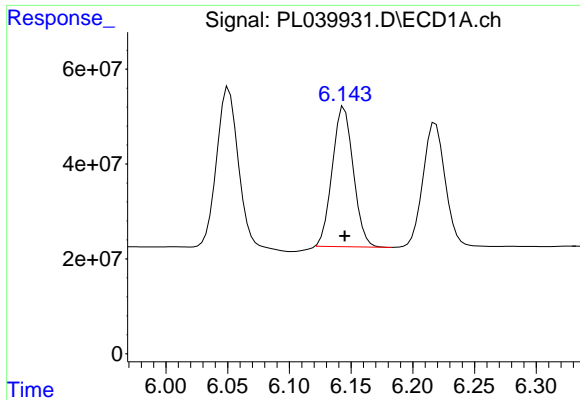
#16 4,4'-DDD

R.T.: 5.911 min
 Delta R.T.: 0.000 min
 Response: 376426405
 Conc: 43.42 ng/ml



#16 4,4'-DDD

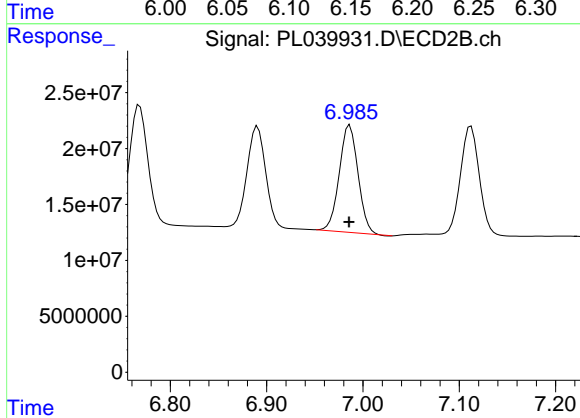
R.T.: 6.688 min
 Delta R.T.: 0.000 min
 Response: 130584791
 Conc: 45.17 ng/ml



#17 4,4'-DDT

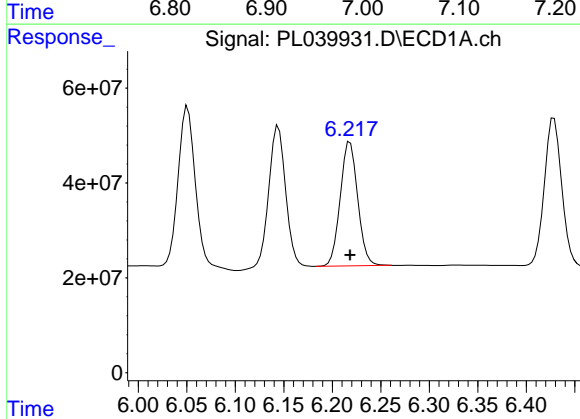
R.T.: 6.144 min
 Delta R.T.: 0.000 min
 Response: 349364037
 Conc: 38.60 ng/ml

Instrument :
 ECD_S
 ClientSampleId :



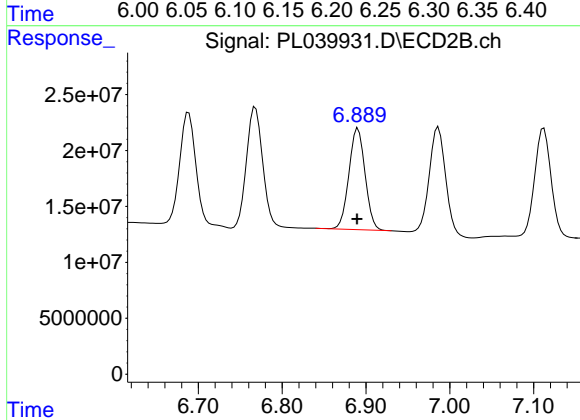
#17 4,4'-DDT

R.T.: 6.986 min
 Delta R.T.: 0.000 min
 Response: 128817354
 Conc: 43.06 ng/ml



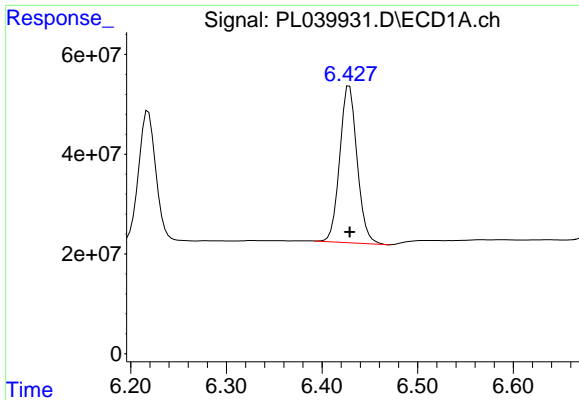
#18 Endrin aldehyde

R.T.: 6.218 min
 Delta R.T.: 0.000 min
 Response: 327174340
 Conc: 42.68 ng/ml



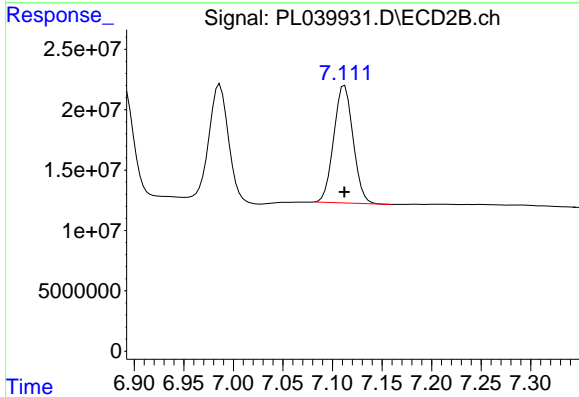
#18 Endrin aldehyde

R.T.: 6.891 min
 Delta R.T.: 0.000 min
 Response: 121697561
 Conc: 46.34 ng/ml

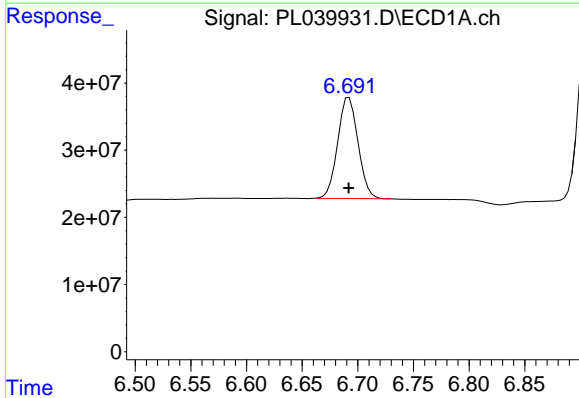


#19 Endosulfan Sulfate
 R.T.: 6.429 min
 Delta R.T.: 0.000 min
 Response: 397781367
 Conc: 43.40 ng/ml

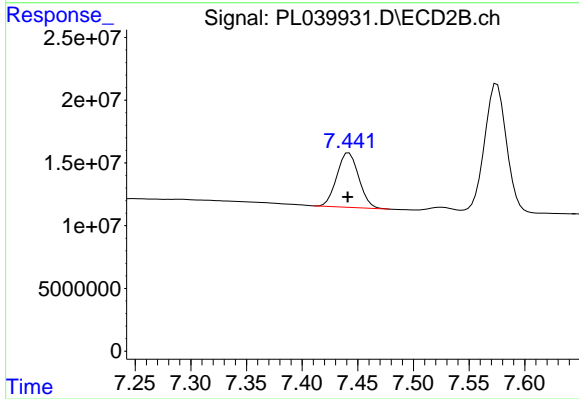
Instrument :
 ECD_S
 ClientSampleId :



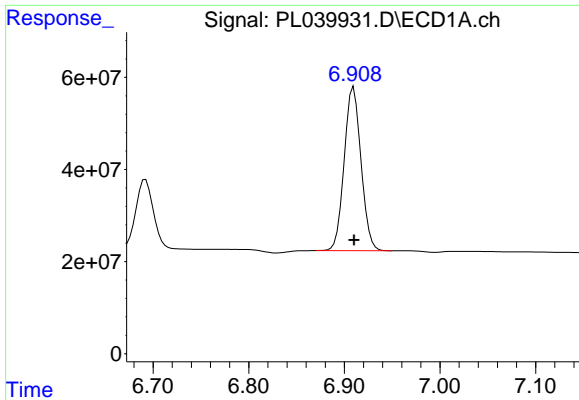
#19 Endosulfan Sulfate
 R.T.: 7.112 min
 Delta R.T.: 0.000 min
 Response: 131468173
 Conc: 44.78 ng/ml



#20 Methoxychlor
 R.T.: 6.692 min
 Delta R.T.: 0.000 min
 Response: 191594894
 Conc: 41.34 ng/ml

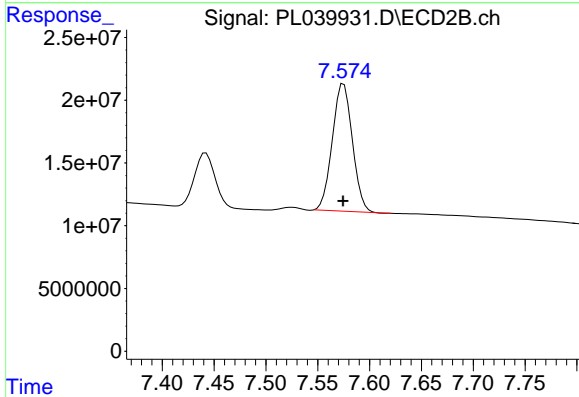


#20 Methoxychlor
 R.T.: 7.442 min
 Delta R.T.: 0.001 min
 Response: 59206735
 Conc: 41.84 ng/ml

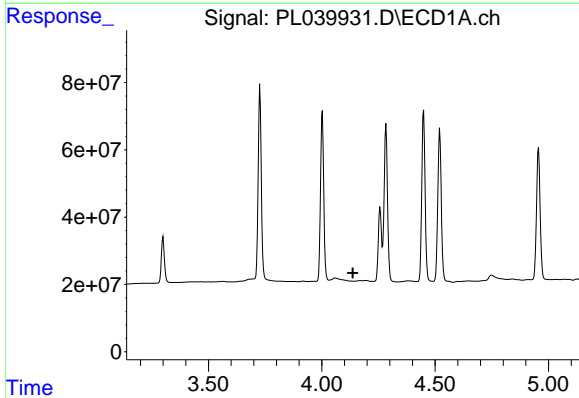


#21 Endrin ketone
 R.T.: 6.910 min
 Delta R.T.: 0.000 min
 Response: 435783678
 Conc: 44.62 ng/ml

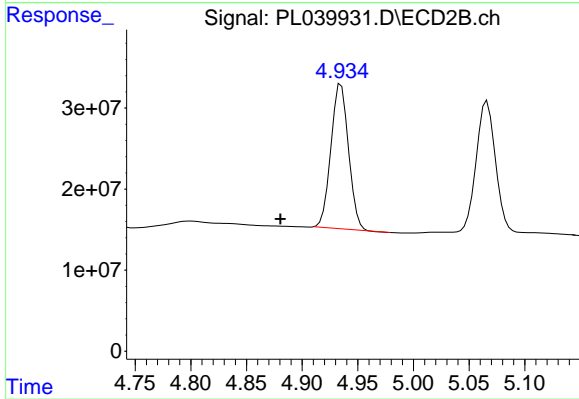
Instrument :
 ECD_S
 ClientSampled :



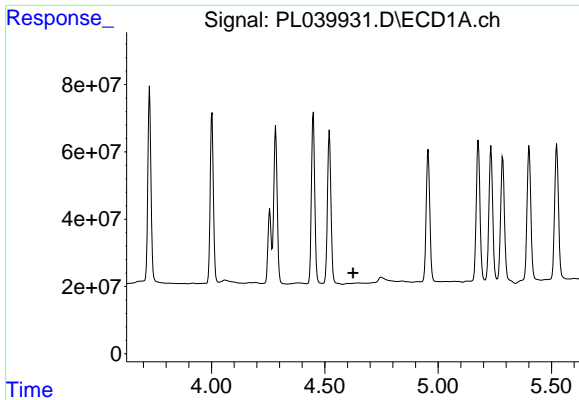
#21 Endrin ketone
 R.T.: 7.575 min
 Delta R.T.: 0.000 min
 Response: 136532860
 Conc: 47.91 ng/ml



#23 Chlordane-1
 R.T.: 0.000 min
 Exp R.T. : 4.136 min
 Response: 0
 Conc: N.D.



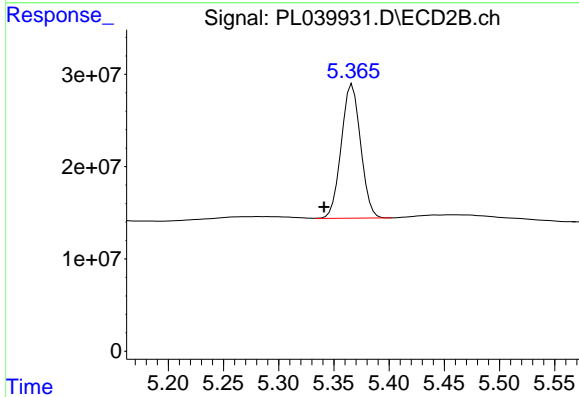
#23 Chlordane-1
 R.T.: 4.935 min
 Delta R.T.: 0.054 min
 Response: 195584478
 Conc: 1263.09 ng/ml



#24 Chlordane-2

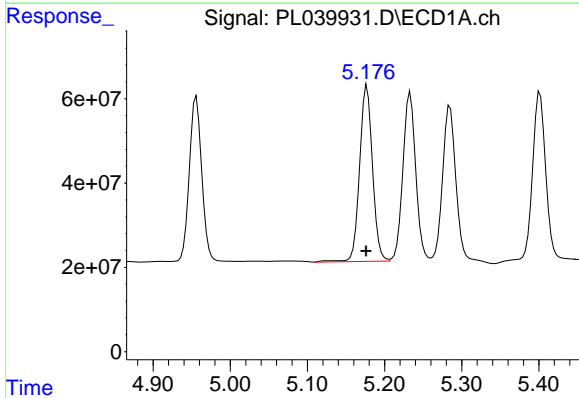
R.T.: 0.000 min
 Exp R.T.: 4.625 min
 Response: 0
 Conc: N.D.

Instrument :
 ECD_S
 ClientSampleId :



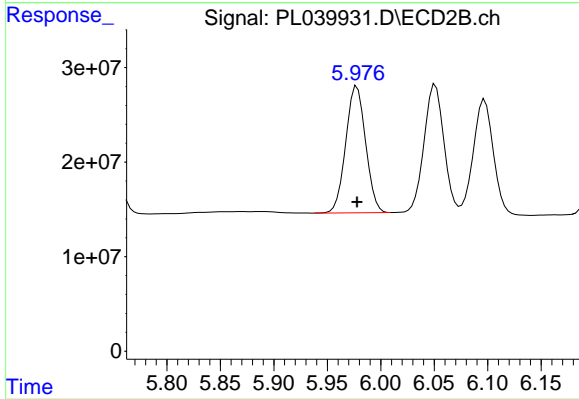
#24 Chlordane-2

R.T.: 5.367 min
 Delta R.T.: 0.026 min
 Response: 176989632
 Conc: 1161.31 ng/ml



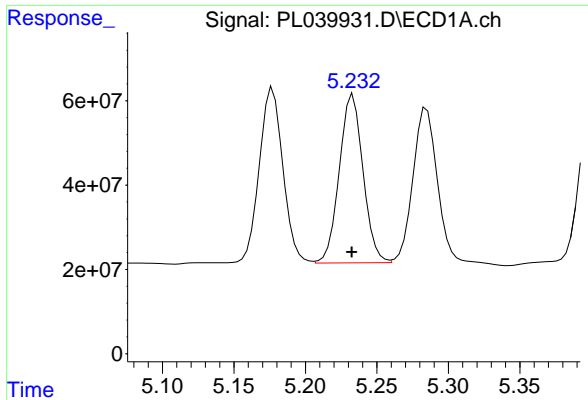
#25 Chlordane-3

R.T.: 5.177 min
 Delta R.T.: 0.001 min
 Response: 486534045
 Conc: 396.48 ng/ml



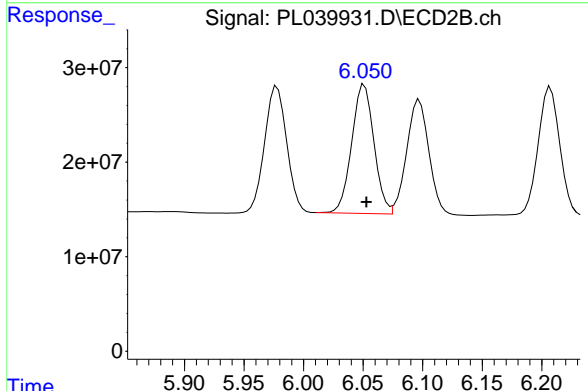
#25 Chlordane-3

R.T.: 5.978 min
 Delta R.T.: 0.000 min
 Response: 173519802
 Conc: 338.94 ng/ml

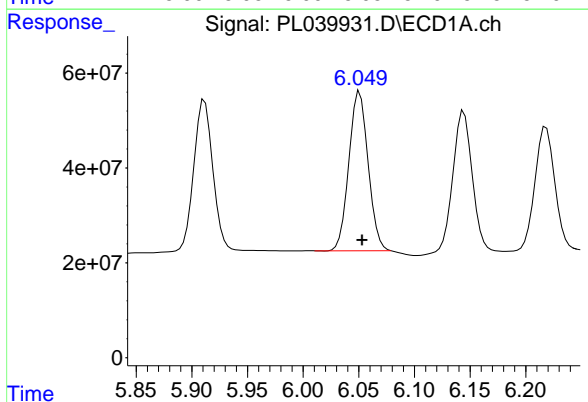


#26 Chlordane-4
 R.T.: 5.233 min
 Delta R.T.: 0.000 min
 Response: 461217334
 Conc: 420.73 ng/ml

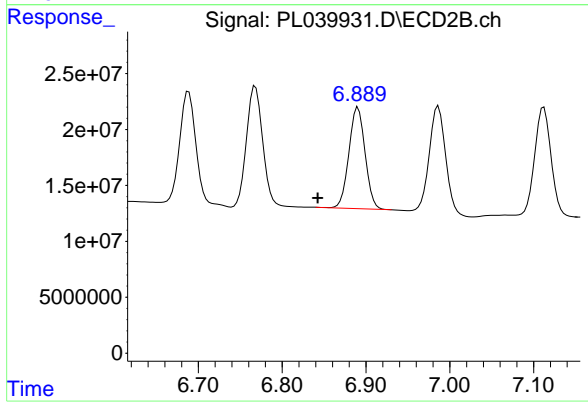
Instrument :
 ECD_S
 ClientSampled :



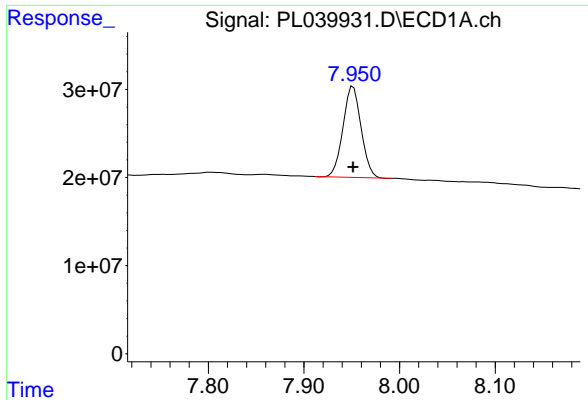
#26 Chlordane-4
 R.T.: 6.051 min
 Delta R.T.: -0.002 min
 Response: 177638337
 Conc: 286.99 ng/ml



#27 Chlordane-5
 R.T.: 6.051 min
 Delta R.T.: -0.002 min
 Response: 404375940
 Conc: 1090.69 ng/ml



#27 Chlordane-5
 R.T.: 6.891 min
 Delta R.T.: 0.048 min
 Response: 121697561
 Conc: 1048.75 ng/ml



#28 Decachlorobiphenyl

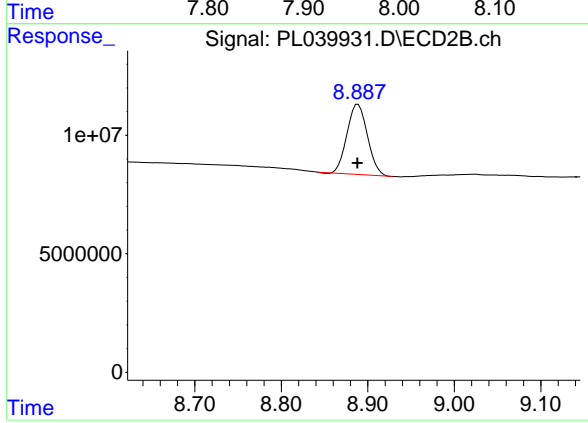
R.T.: 7.952 min

Delta R.T.: 0.000 min

Response: 135997449

Conc: 16.32 ng/ml

Instrument :
ECD_S
ClientSampleId :



#28 Decachlorobiphenyl

R.T.: 8.889 min

Delta R.T.: 0.000 min

Response: 48350742

Conc: 17.80 ng/ml