

Data Path : Z:\pestpcbsrv\HPCHEM1\ECD_S\Data\PS091422\
 Data File : PS020541.D
 Signal(s) : Signal #1: ECD1A.ch Signal #2: ECD2B.ch
 Acq On : 14 Sep 2022 20:58
 Operator : AJ\MA
 Sample : N4578-11
 Misc :
 ALS Vial : 9 Sample Multiplier: 1

Instrument :
 ECD_S
 ClientSampleId :

Integration File signal 1: autoint1.e
 Integration File signal 2: autoint2.e
 Quant Time: Sep 15 04:13:58 2022
 Quant Method : Z:\pestpcbsrv\HPCHEM1\ECD_S\Method\PS091322.M
 Quant Title : 8080.M
 QLast Update : Wed Sep 14 02:51:16 2022
 Response via : Initial Calibration
 Integrator: ChemStation

Volume Inj. : 2 µl
 Signal #1 Phase : Rtx-CLPesticides Signal #2 Phase: Rtx-CLPesticides2
 Signal #1 Info : 30M x 0.32mm x0.5 Signal #2 Info : 30M x 0.32mm x 0.25µm

	Compound	RT#1	RT#2	Resp#1	Resp#2	ng/ml	ng/ml

System Monitoring Compounds							
4) S	2,4-DCAA	7.172	6.755	1134.1E6	296.2E6	329.551	347.785
Target Compounds							
1) T	Dalapon	2.969	2.506	258.2E6	58520368	51.441	48.263
2) T	3,5-DICHL...	6.378	5.966	-7934842	92049584	N.D.	67.454
3) T	4-Nitroph...	7.031	6.403	6812914	3956795	130.645	8.397 #
6) T	MCPD	7.525	6.997	102.2E6	11098602	9.814	3.843 #
7) T	MCPA	7.652	7.211	130.9E6	40496328	8.829	9.379
8) T	DICHLORPROP	8.089	7.565	12181648	25598531	3.379	25.371 #
9) T	2,4-D	8.315	7.803	29113247	26367256	6.264	20.761 #
10) T	Pentachlo...	8.566	8.249	62061431	649947	1.346	<MDL #
11) T	2,4,5-TP ...	9.176	8.652	32914074	3897994	1.610	<MDL #
12) T	2,4,5-T	9.409	8.979	23692277	25096972	1.070	4.605 #
13) T	2,4-DB	9.975	9.509	98940288	15322016	27.246	21.418
14) T	DINOSEB	11.090	9.837	641.6E6	138.6E6	34.936	32.314
15) T	Picloram	10.979	10.804	715.1E6	35203368	23.762	4.371 #
16) T	DCPA	11.415	10.740	107.6E6	19699657	4.202	2.671 #

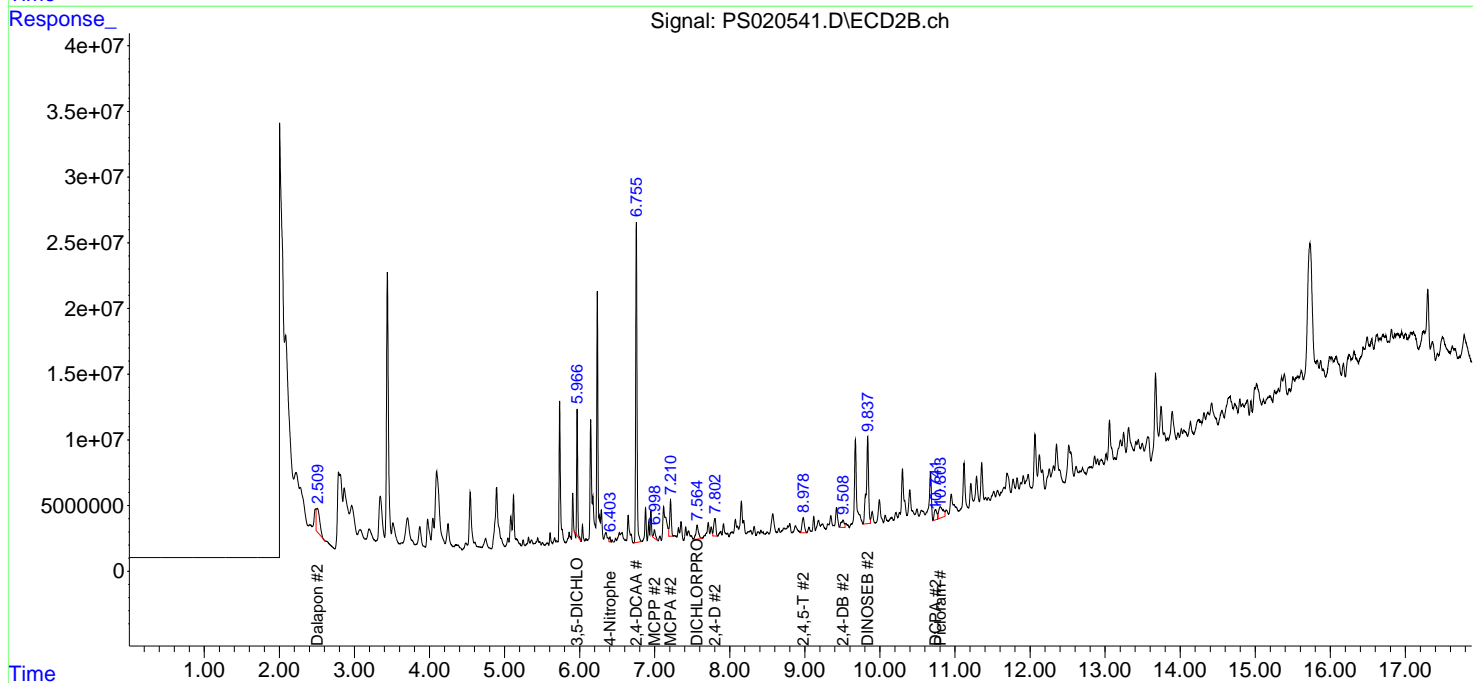
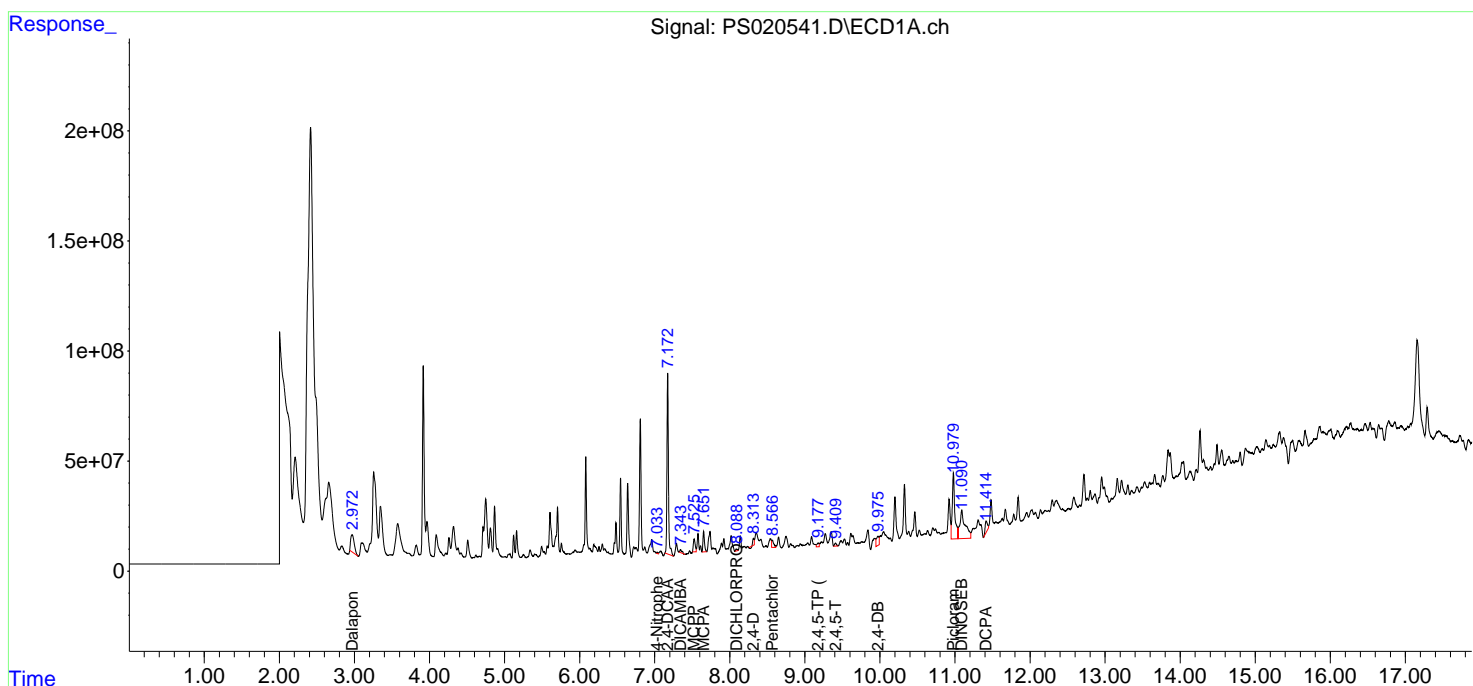
(f)=RT Delta > 1/2 Window (#)=Amounts differ by > 25% (m)=manual int.

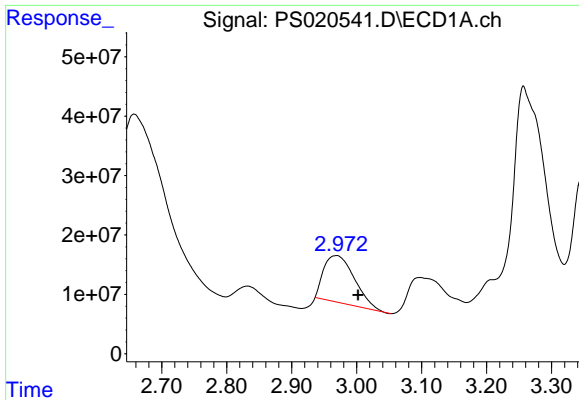
Data Path : Z:\pestpcbsrv\HPCHEM1\ECD_S\Data\PS091422\
 Data File : PS020541.D
 Signal(s) : Signal #1: ECD1A.ch Signal #2: ECD2B.ch
 Acq On : 14 Sep 2022 20:58
 Operator : AJ\MA
 Sample : N4578-11
 Misc :
 ALS Vial : 9 Sample Multiplier: 1

Instrument :
 ECD_S
 ClientSampleId :

Integration File signal 1: autoint1.e
 Integration File signal 2: autoint2.e
 Quant Time: Sep 15 04:13:58 2022
 Quant Method : Z:\pestpcbsrv\HPCHEM1\ECD_S\Method\PS091322.M
 Quant Title : 8080.M
 QLast Update : Wed Sep 14 02:51:16 2022
 Response via : Initial Calibration
 Integrator: ChemStation

Volume Inj. : 2 µl
 Signal #1 Phase : Rtx-CLPesticides Signal #2 Phase: Rtx-CLPesticides2
 Signal #1 Info : 30M x 0.32mm x0.5 Signal #2 Info : 30M x 0.32mm x 0.25µm

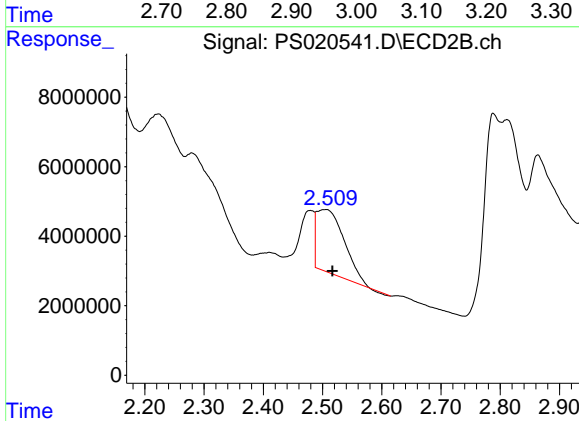




#1 Dalapon

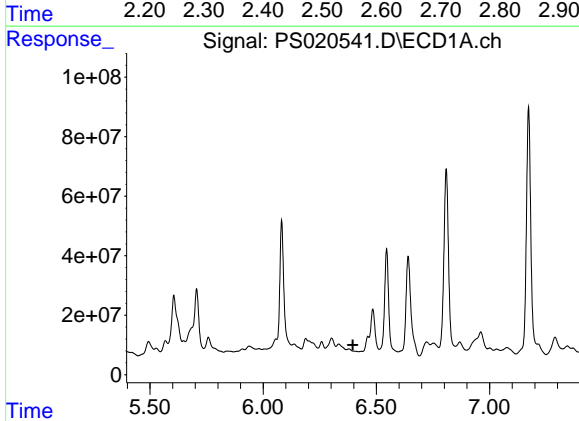
R.T.: 2.969 min
 Delta R.T.: -0.033 min
 Response: 258185168
 Conc: 51.44 ng/ml

Instrument :
 ECD_S
 ClientSampleId :



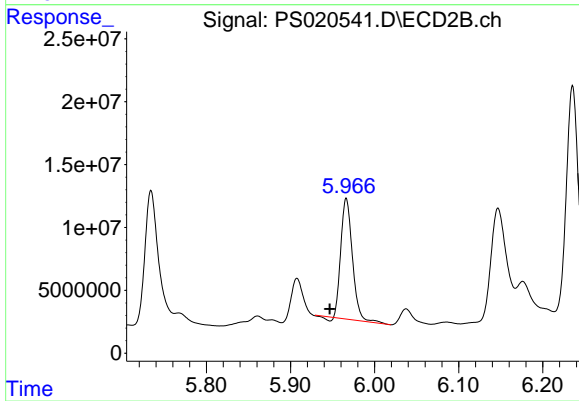
#1 Dalapon

R.T.: 2.506 min
 Delta R.T.: -0.011 min
 Response: 58520368
 Conc: 48.26 ng/ml



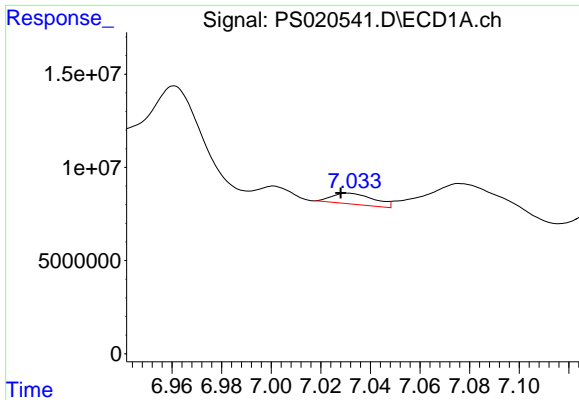
#2 3,5-DICHLOROBENZOIC ACID

R.T.: 6.378 min
 Delta R.T.: -0.018 min
 Response: -7934842
 Conc: N.D.



#2 3,5-DICHLOROBENZOIC ACID

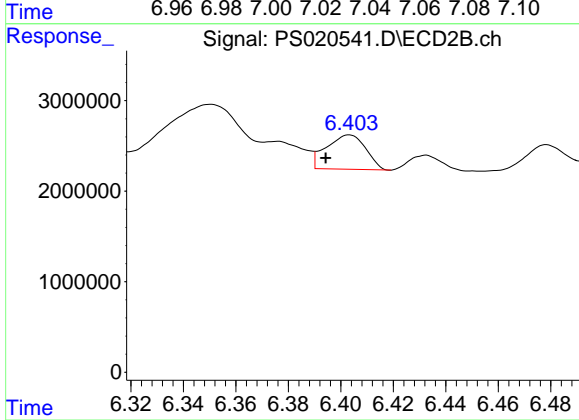
R.T.: 5.966 min
 Delta R.T.: 0.020 min
 Response: 92049584
 Conc: 67.45 ng/ml



#3 4-Nitrophenol

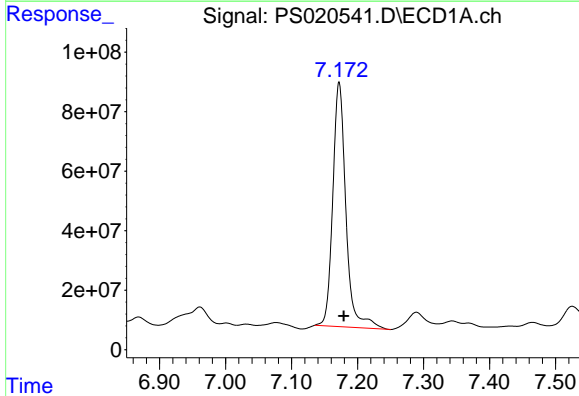
R.T.: 7.031 min
 Delta R.T.: 0.003 min
 Response: 6812914
 Conc: 130.65 ng/ml

Instrument :
 ECD_S
 ClientSampleId :



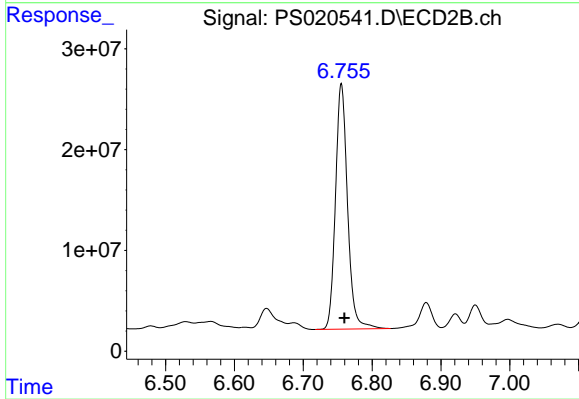
#3 4-Nitrophenol

R.T.: 6.403 min
 Delta R.T.: 0.009 min
 Response: 3956795
 Conc: 8.40 ng/ml



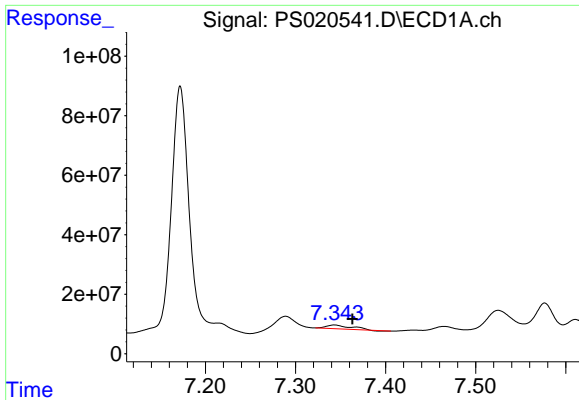
#4 2,4-DCAA

R.T.: 7.172 min
 Delta R.T.: -0.007 min
 Response: 1134143435
 Conc: 329.55 ng/ml



#4 2,4-DCAA

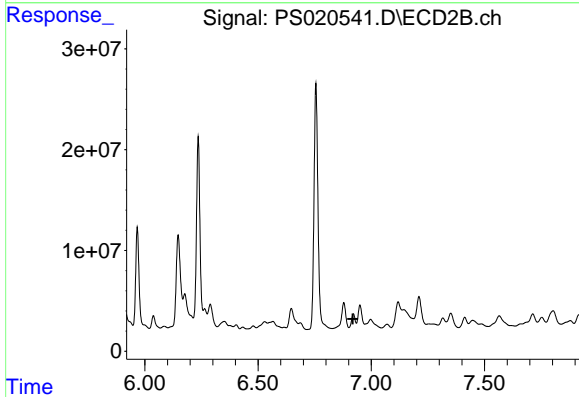
R.T.: 6.755 min
 Delta R.T.: -0.004 min
 Response: 296206599
 Conc: 347.78 ng/ml



#5 DICAMBA

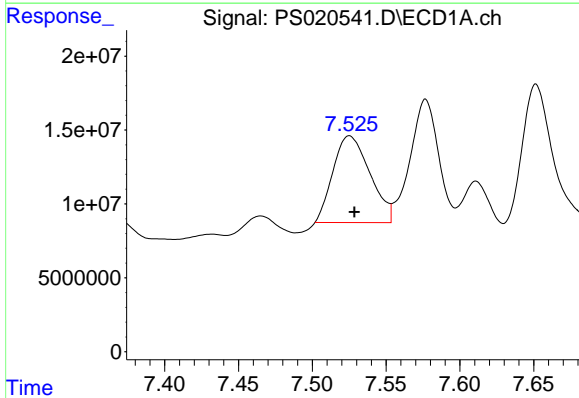
R.T.: 7.343 min
 Delta R.T.: -0.020 min
 Response: 24055362
 Conc: 1.76 ng/ml

Instrument :
 ECD_S
 ClientSampleId :



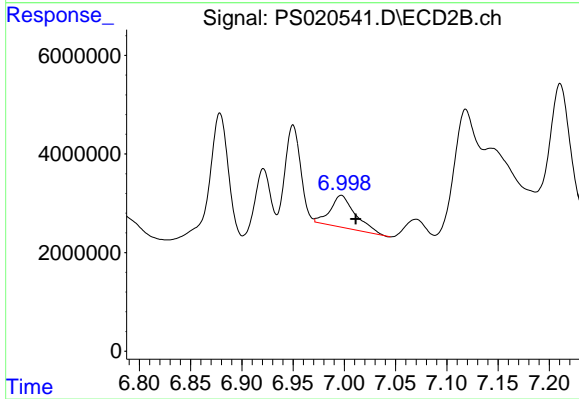
#5 DICAMBA

R.T.: 6.921 min
 Delta R.T.: 0.002 min
 Response: -11978525
 Conc: N.D.



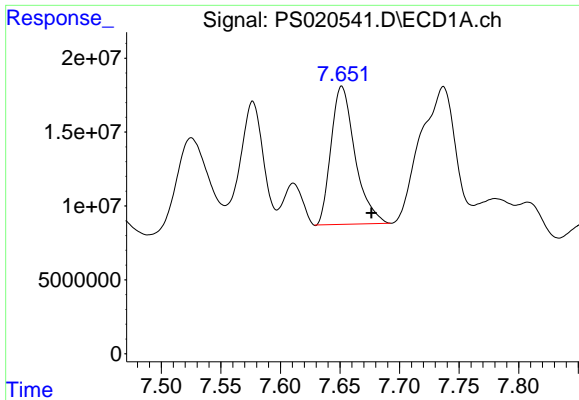
#6 MCPP

R.T.: 7.525 min
 Delta R.T.: -0.003 min
 Response: 102197144
 Conc: 9.81 ug/ml



#6 MCPP

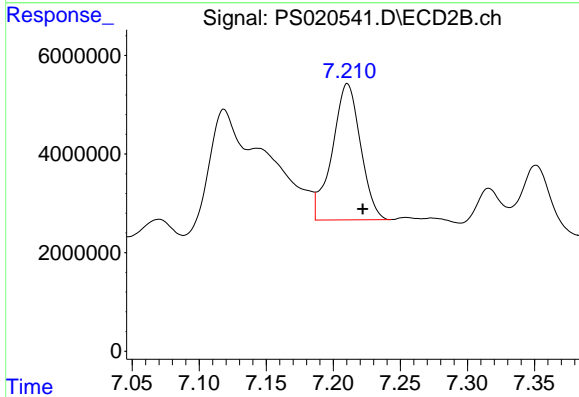
R.T.: 6.997 min
 Delta R.T.: -0.014 min
 Response: 11098602
 Conc: 3.84 ug/ml



#7 MCPA

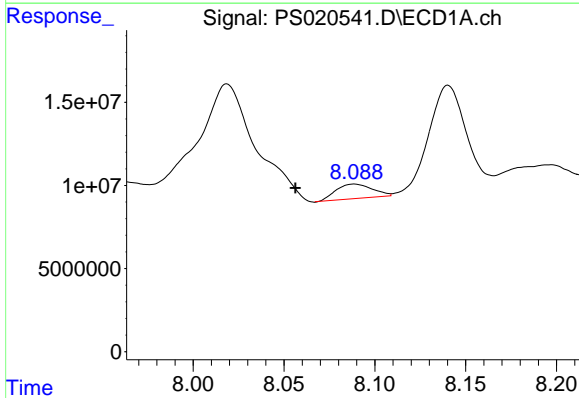
R.T.: 7.652 min
 Delta R.T.: -0.025 min
 Response: 130949724
 Conc: 8.83 ug/ml

Instrument :
 ECD_S
 ClientSampleId :



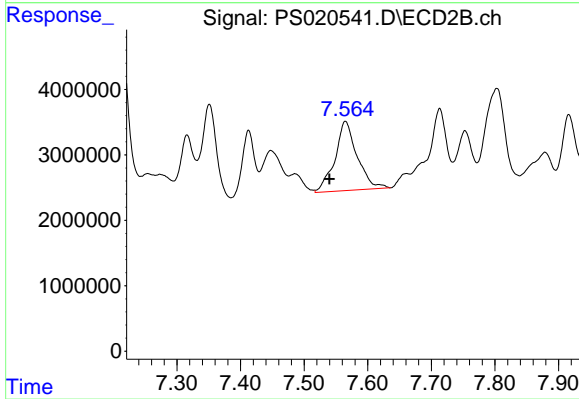
#7 MCPA

R.T.: 7.211 min
 Delta R.T.: -0.011 min
 Response: 40496328
 Conc: 9.38 ug/ml



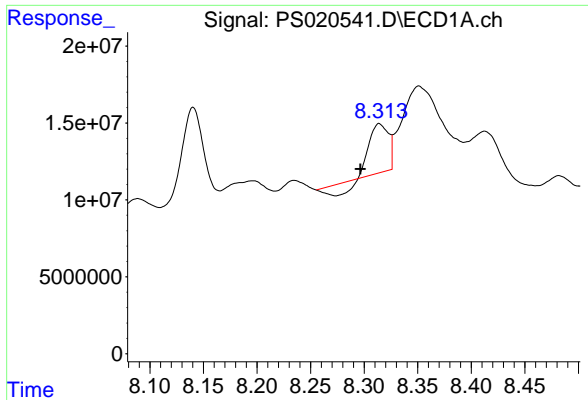
#8 DICHLORPROP

R.T.: 8.089 min
 Delta R.T.: 0.033 min
 Response: 12181648
 Conc: 3.38 ng/ml



#8 DICHLORPROP

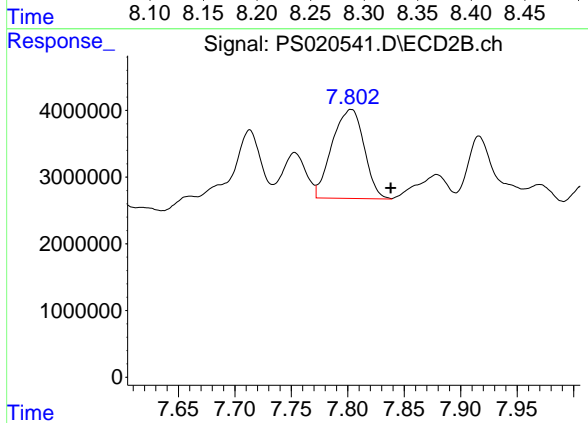
R.T.: 7.565 min
 Delta R.T.: 0.025 min
 Response: 25598531
 Conc: 25.37 ng/ml



#9 2,4-D

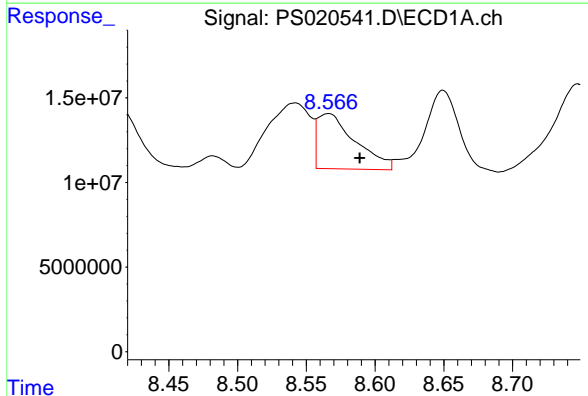
R.T.: 8.315 min
 Delta R.T.: 0.018 min
 Response: 29113247
 Conc: 6.26 ng/ml

Instrument :
 ECD_S
 ClientSampleId :



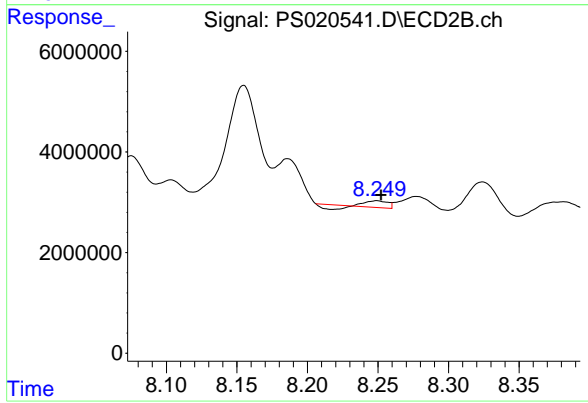
#9 2,4-D

R.T.: 7.803 min
 Delta R.T.: -0.035 min
 Response: 26367256
 Conc: 20.76 ng/ml



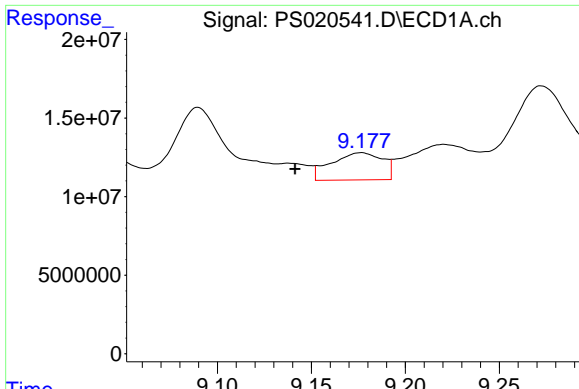
#10 Pentachlorophenol

R.T.: 8.566 min
 Delta R.T.: -0.023 min
 Response: 62061431
 Conc: 1.35 ng/ml



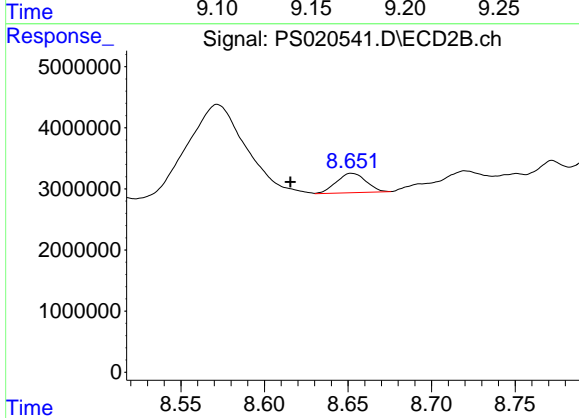
#10 Pentachlorophenol

R.T.: 8.249 min
 Delta R.T.: -0.003 min
 Response: 649947
 Conc: N.D.

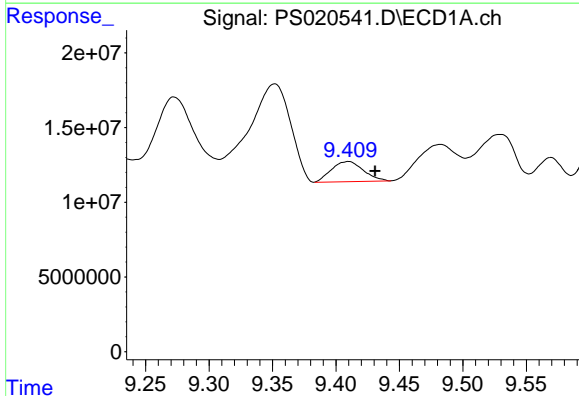


#11 2,4,5-TP (SILVEX)
 R.T.: 9.176 min
 Delta R.T.: 0.035 min
 Response: 32914074
 Conc: 1.61 ng/ml

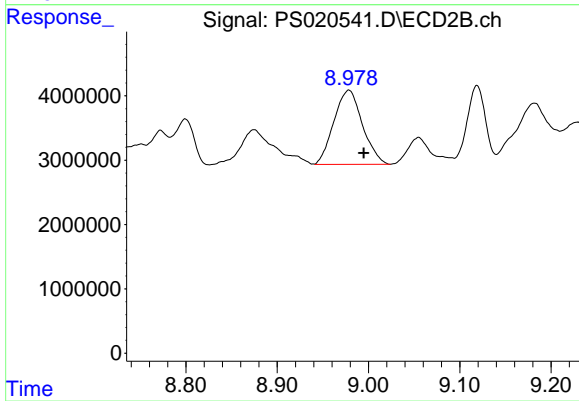
Instrument :
 ECD_S
 ClientSampleId :



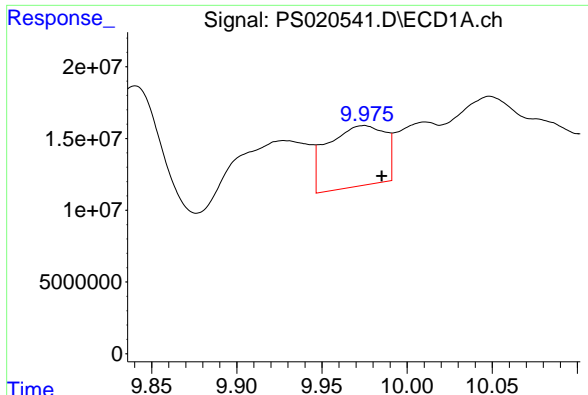
#11 2,4,5-TP (SILVEX)
 R.T.: 8.652 min
 Delta R.T.: 0.037 min
 Response: 3897994
 Conc: N.D.



#12 2,4,5-T
 R.T.: 9.409 min
 Delta R.T.: -0.022 min
 Response: 23692277
 Conc: 1.07 ng/ml



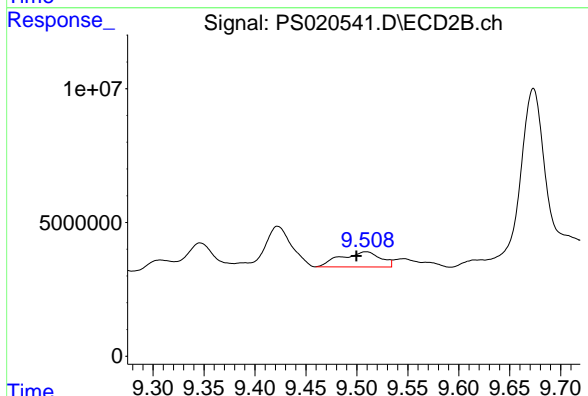
#12 2,4,5-T
 R.T.: 8.979 min
 Delta R.T.: -0.016 min
 Response: 25096972
 Conc: 4.61 ng/ml



#13 2,4-DB

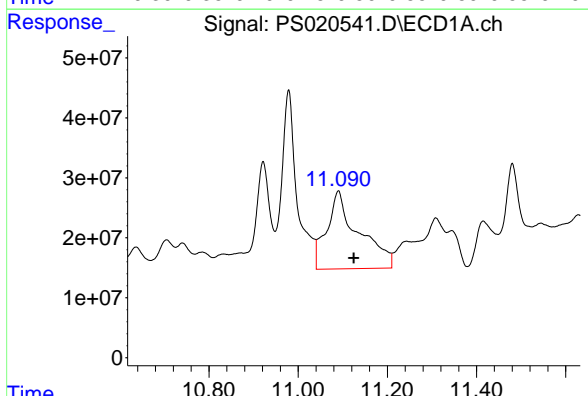
R.T.: 9.975 min
 Delta R.T.: -0.011 min
 Response: 98940288
 Conc: 27.25 ng/ml

Instrument :
 ECD_S
 ClientSampleId :



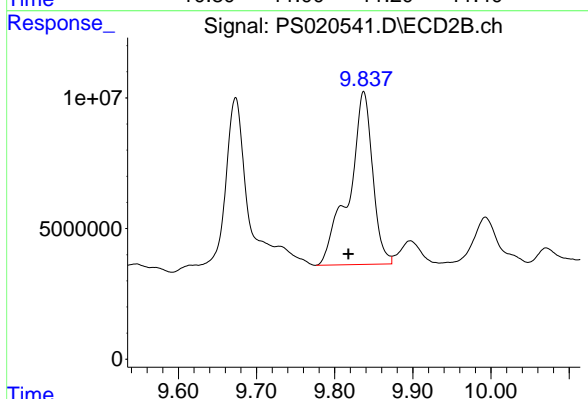
#13 2,4-DB

R.T.: 9.509 min
 Delta R.T.: 0.010 min
 Response: 15322016
 Conc: 21.42 ng/ml



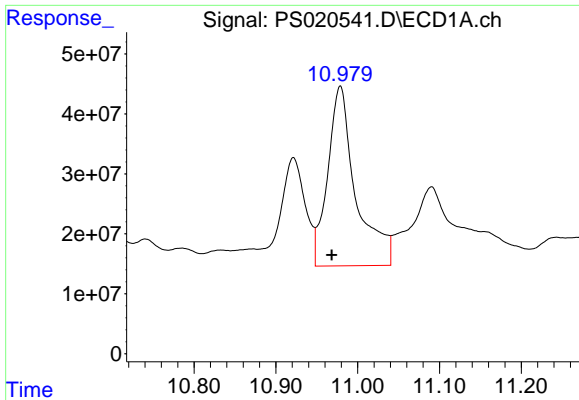
#14 DINOSEB

R.T.: 11.090 min
 Delta R.T.: -0.035 min
 Response: 641611014
 Conc: 34.94 ng/ml



#14 DINOSEB

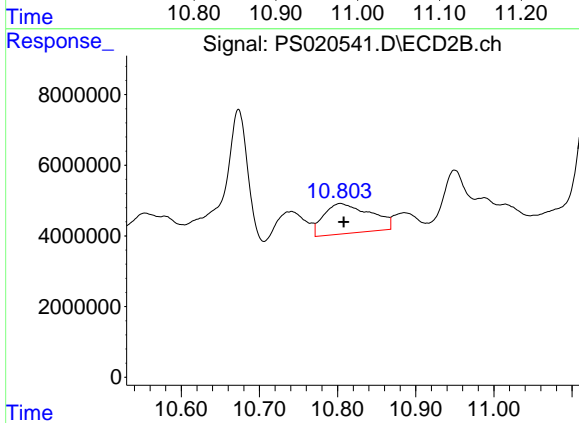
R.T.: 9.837 min
 Delta R.T.: 0.019 min
 Response: 138556653
 Conc: 32.31 ng/ml



#15 Picloram

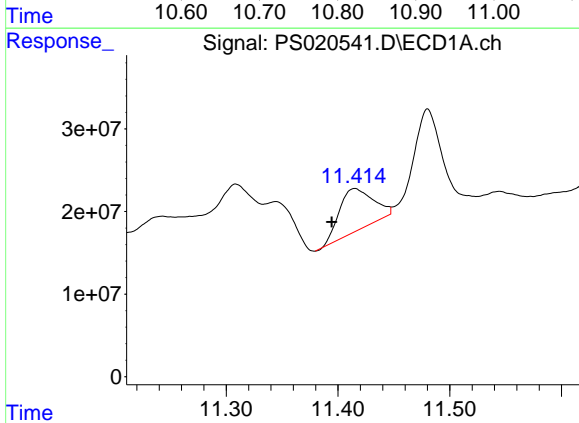
R.T.: 10.979 min
 Delta R.T.: 0.010 min
 Response: 715072805
 Conc: 23.76 ng/ml

Instrument :
 ECD_S
 ClientSampleId :



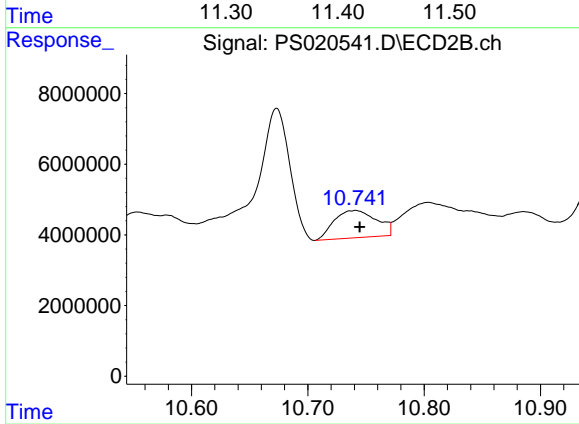
#15 Picloram

R.T.: 10.804 min
 Delta R.T.: -0.004 min
 Response: 35203368
 Conc: 4.37 ng/ml



#16 DCPA

R.T.: 11.415 min
 Delta R.T.: 0.021 min
 Response: 107649087
 Conc: 4.20 ng/ml



#16 DCPA

R.T.: 10.740 min
 Delta R.T.: -0.004 min
 Response: 19699657
 Conc: 2.67 ng/ml