

Data Path : Z:\pestpcbsrv\HPCHEM1\ECD_S\Data\PS091422\
 Data File : PS020555.D
 Signal(s) : Signal #1: ECD1A.ch Signal #2: ECD2B.ch
 Acq On : 15 Sep 2022 04:39
 Operator : AJ\MA
 Sample : N4579-19
 Misc :
 ALS Vial : 21 Sample Multiplier: 1

Instrument :
 ECD_S
 ClientSampleId :

Integration File signal 1: autoint1.e
 Integration File signal 2: autoint2.e
 Quant Time: Sep 15 05:33:57 2022
 Quant Method : Z:\pestpcbsrv\HPCHEM1\ECD_S\Method\PS091322.M
 Quant Title : 8080.M
 QLast Update : Wed Sep 14 02:51:16 2022
 Response via : Initial Calibration
 Integrator: ChemStation

Volume Inj. : 2 µl
 Signal #1 Phase : Rtx-CLPesticides Signal #2 Phase: Rtx-CLPesticides2
 Signal #1 Info : 30M x 0.32mm x0.5 Signal #2 Info : 30M x 0.32mm x 0.25µm

	Compound	RT#1	RT#2	Resp#1	Resp#2	ng/ml	ng/ml

System Monitoring Compounds							
4) S	2,4-DCAA	7.174	6.758	257.0E6	63197477	74.682	74.202
Target Compounds							
1) T	Dalapon	2.967	2.501	266.0E6	44271971	52.998	36.512 #
2) T	3,5-DICHL...	6.379	5.967	-1789806	132.4E6	N.D.	97.026
3) T	4-Nitroph...	7.045	6.403	11562530	3730111	133.115	7.916 #
6) T	MCPD	7.527	7.020	54127105	3942812	5.198	1.365 #
7) T	MCPA	7.660	7.212	44903131	39395841	3.028	9.124 #
8) T	DICHLORPROP	8.055	7.543	23018264	1755081	6.384	1.739 #
9) T	2,4-D	8.273	7.861	1033689	1707235	<MDL	1.344 #
10) T	Pentachlo...	8.592	8.252	49029344	1391699	1.063	<MDL #
11) T	2,4,5-TP ...	9.142	8.575f	39233315	19350280	1.919	3.269 #
12) T	2,4,5-T	9.410	8.988	52158323	4200183	2.355	<MDL #
13) T	2,4-DB	10.010	9.503	111.3E6	5385726	30.637	7.528 #
14) T	DINOSEB	11.092	9.838	290.1E6	78107107	15.797	18.216
15) T	Picloram	10.978	10.818	481.0E6	23779404	15.983	2.953 #
16) T	DCPA	11.416	10.741	77596675	21882568	3.029	2.967

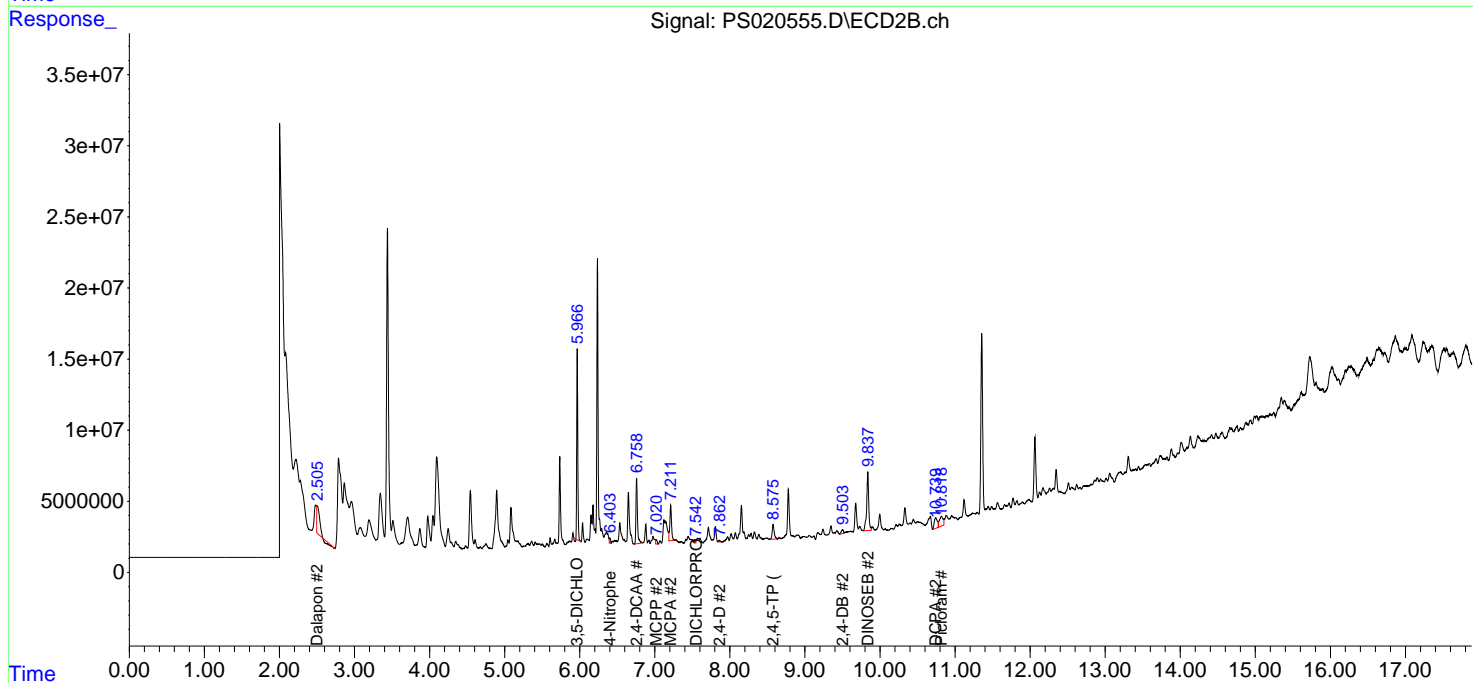
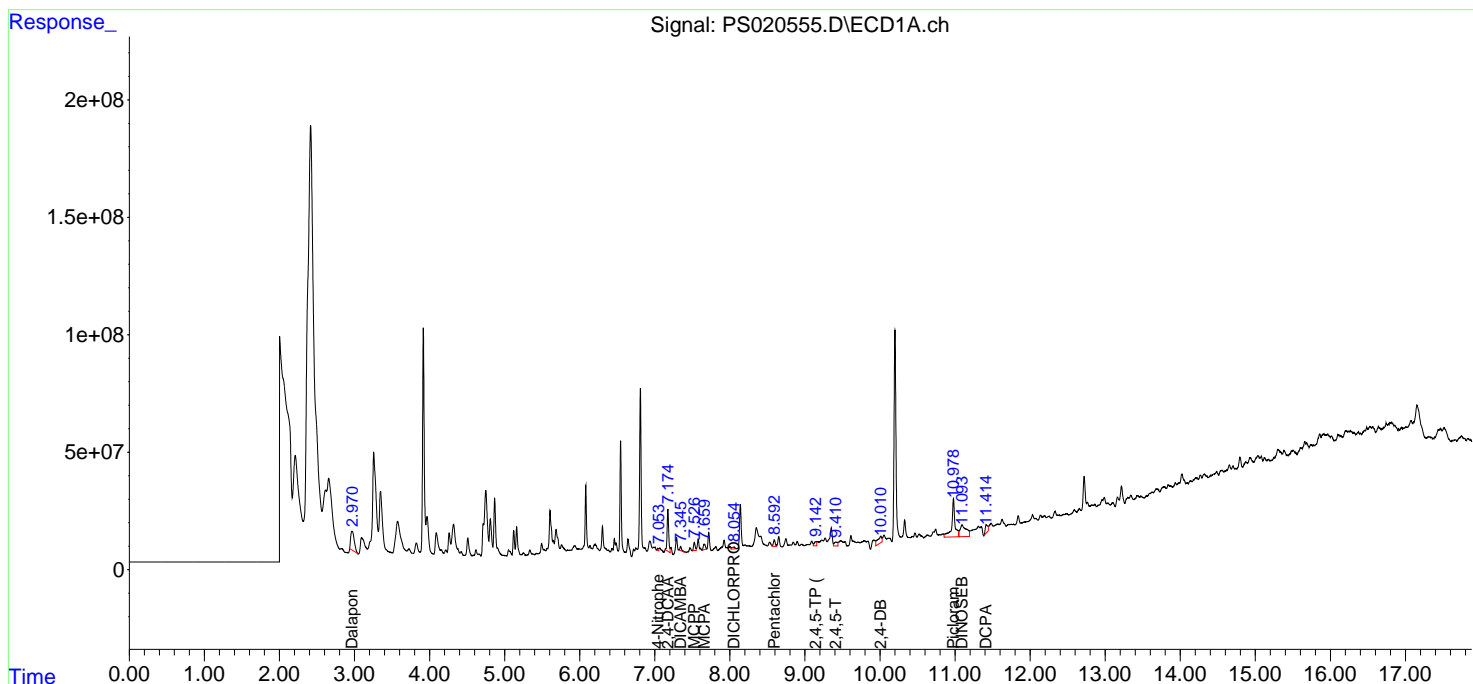
(f)=RT Delta > 1/2 Window (#)=Amounts differ by > 25% (m)=manual int.

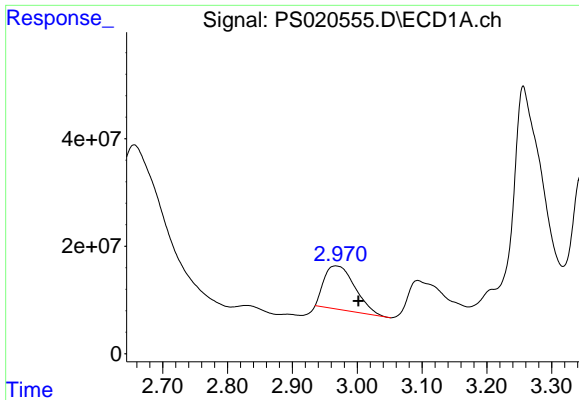
Data Path : Z:\pestpcbsrv\HPCHEM1\ECD_S\Data\PS091422\
 Data File : PS020555.D
 Signal(s) : Signal #1: ECD1A.ch Signal #2: ECD2B.ch
 Acq On : 15 Sep 2022 04:39
 Operator : AJ\MA
 Sample : N4579-19
 Misc :
 ALS Vial : 21 Sample Multiplier: 1

Instrument :
 ECD_S
 ClientSampleId :

Integration File signal 1: autoint1.e
 Integration File signal 2: autoint2.e
 Quant Time: Sep 15 05:33:57 2022
 Quant Method : Z:\pestpcbsrv\HPCHEM1\ECD_S\Method\PS091322.M
 Quant Title : 8080.M
 QLast Update : Wed Sep 14 02:51:16 2022
 Response via : Initial Calibration
 Integrator: ChemStation

Volume Inj. : 2 µl
 Signal #1 Phase : Rtx-CLPesticides Signal #2 Phase: Rtx-CLPesticides2
 Signal #1 Info : 30M x 0.32mm x0.5 Signal #2 Info : 30M x 0.32mm x 0.25µm

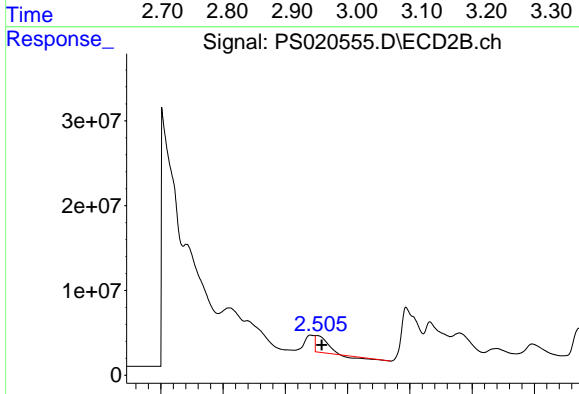




#1 Dalapon

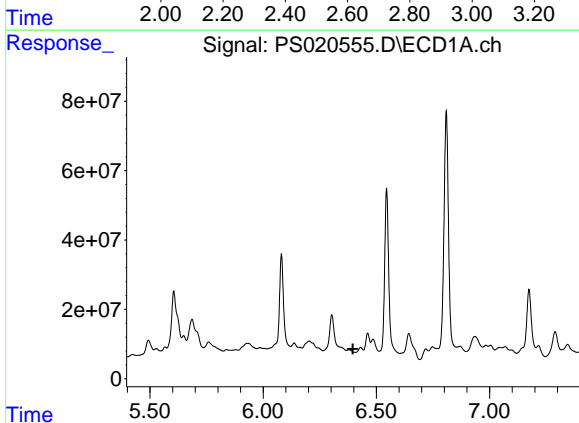
R.T.: 2.967 min
 Delta R.T.: -0.035 min
 Response: 265998210
 Conc: 53.00 ng/ml

Instrument :
 ECD_S
 ClientSampleId :



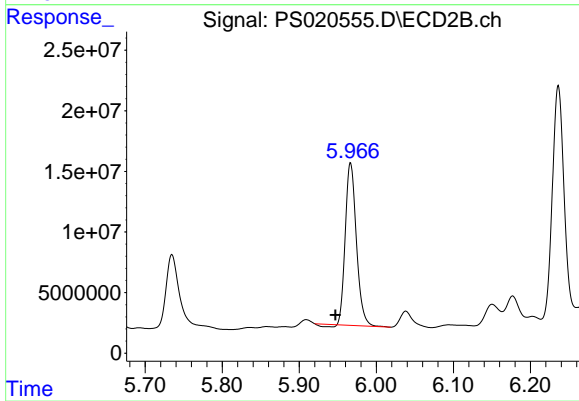
#1 Dalapon

R.T.: 2.501 min
 Delta R.T.: -0.015 min
 Response: 44271971
 Conc: 36.51 ng/ml



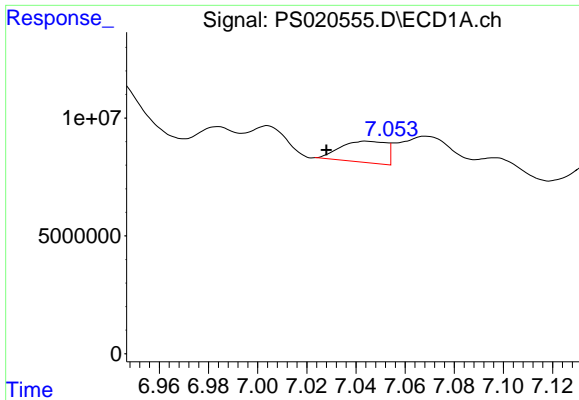
#2 3,5-DICHLOROBENZOIC ACID

R.T.: 6.379 min
 Delta R.T.: -0.017 min
 Response: -1789806
 Conc: N.D.



#2 3,5-DICHLOROBENZOIC ACID

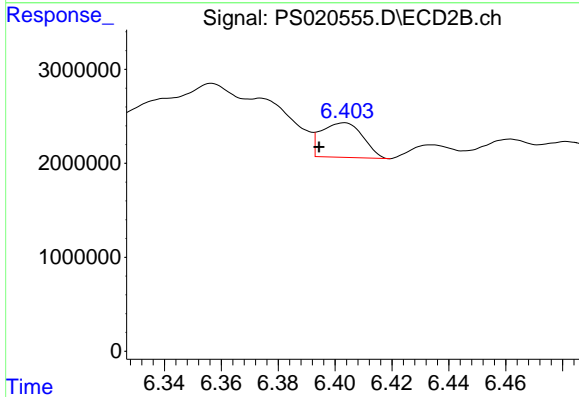
R.T.: 5.967 min
 Delta R.T.: 0.020 min
 Response: 132404082
 Conc: 97.03 ng/ml



#3 4-Nitrophenol

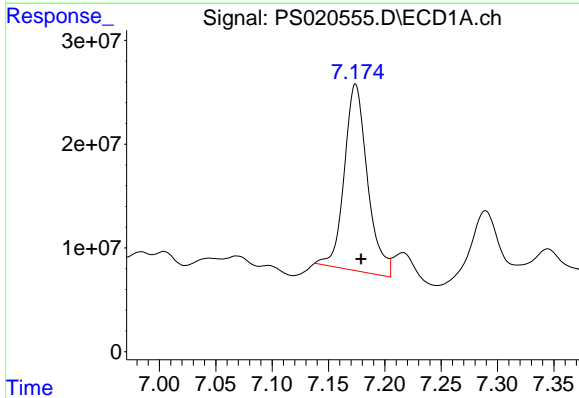
R.T.: 7.045 min
 Delta R.T.: 0.017 min
 Response: 11562530
 Conc: 133.11 ng/ml

Instrument :
 ECD_S
 ClientSampleId :



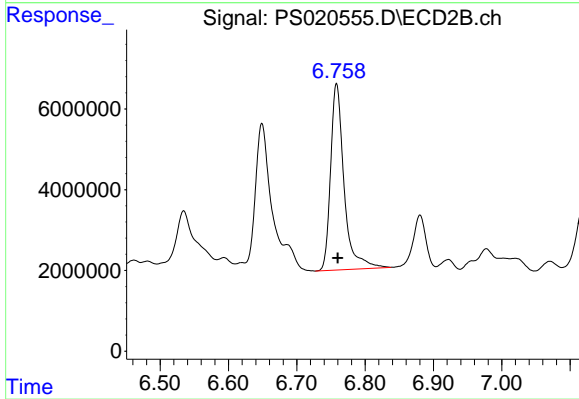
#3 4-Nitrophenol

R.T.: 6.403 min
 Delta R.T.: 0.009 min
 Response: 3730111
 Conc: 7.92 ng/ml



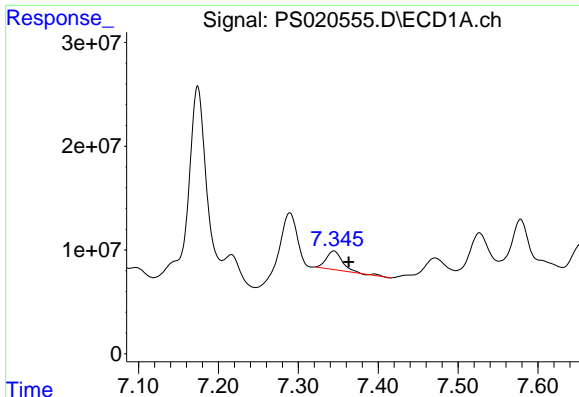
#4 2,4-DCAA

R.T.: 7.174 min
 Delta R.T.: -0.005 min
 Response: 257015378
 Conc: 74.68 ng/ml



#4 2,4-DCAA

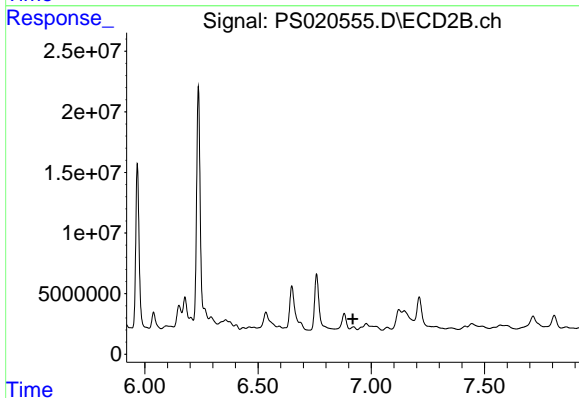
R.T.: 6.758 min
 Delta R.T.: -0.002 min
 Response: 63197477
 Conc: 74.20 ng/ml



#5 DICAMBA

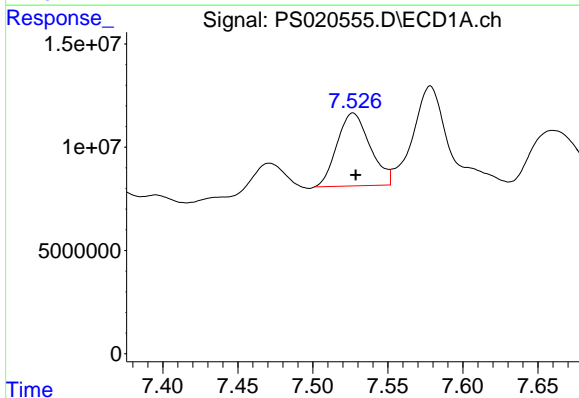
R.T.: 7.344 min
 Delta R.T.: -0.019 min
 Response: 25794423
 Conc: 1.89 ng/ml

Instrument :
 ECD_S
 ClientSampleId :



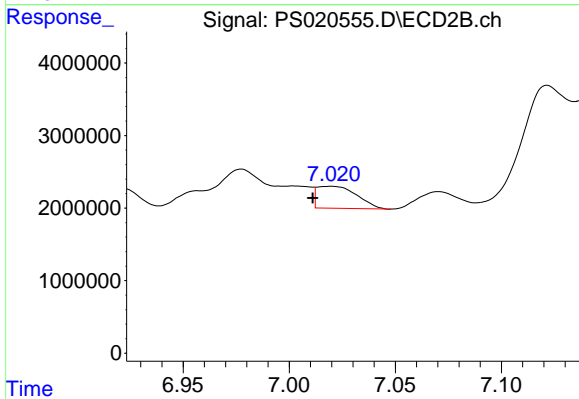
#5 DICAMBA

R.T.: 6.922 min
 Delta R.T.: 0.003 min
 Response: -8703805
 Conc: N.D.



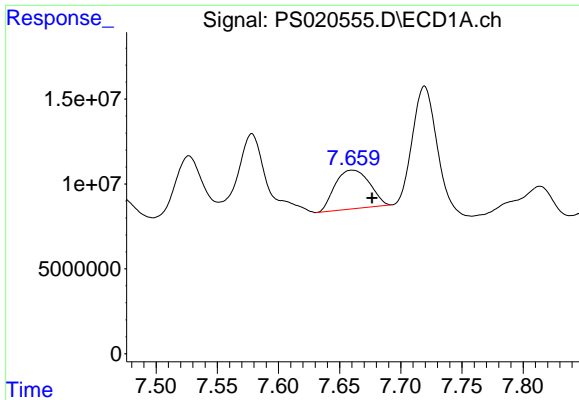
#6 MCP

R.T.: 7.527 min
 Delta R.T.: -0.002 min
 Response: 54127105
 Conc: 5.20 ug/ml



#6 MCP

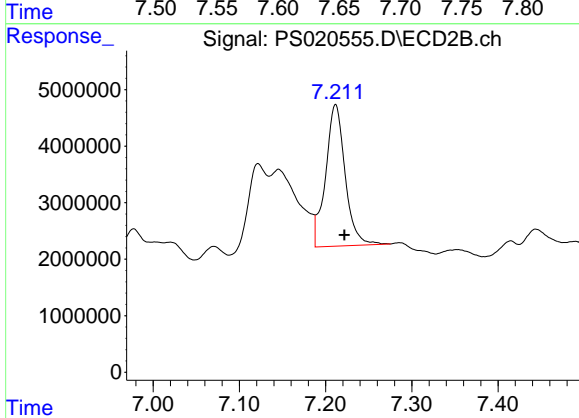
R.T.: 7.020 min
 Delta R.T.: 0.009 min
 Response: 3942812
 Conc: 1.37 ug/ml



#7 MCPA

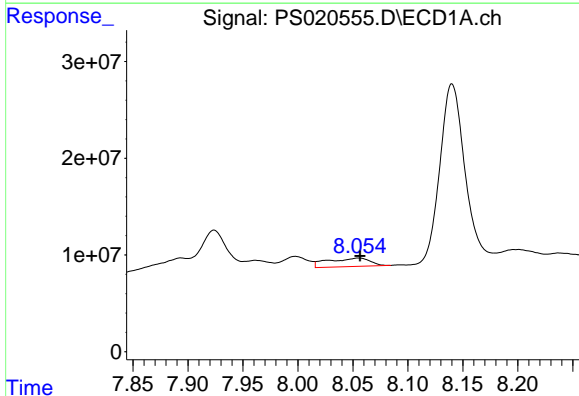
R.T.: 7.660 min
 Delta R.T.: -0.016 min
 Response: 44903131
 Conc: 3.03 ug/ml

Instrument :
 ECD_S
 ClientSampleId :



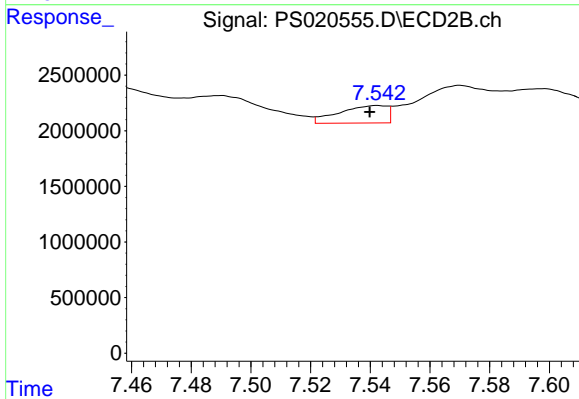
#7 MCPA

R.T.: 7.212 min
 Delta R.T.: -0.010 min
 Response: 39395841
 Conc: 9.12 ug/ml



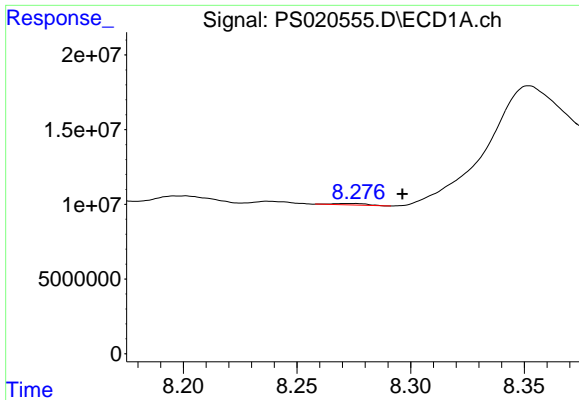
#8 DICHLORPROP

R.T.: 8.055 min
 Delta R.T.: -0.001 min
 Response: 23018264
 Conc: 6.38 ng/ml



#8 DICHLORPROP

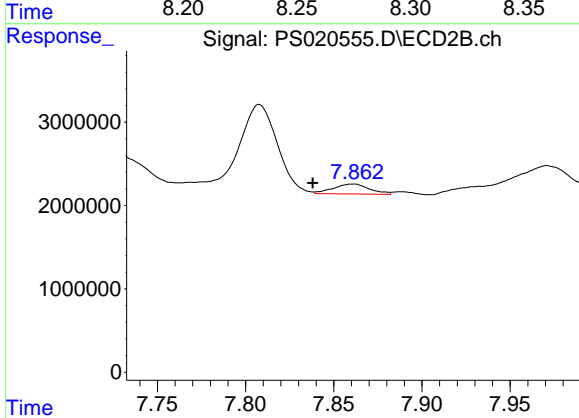
R.T.: 7.543 min
 Delta R.T.: 0.003 min
 Response: 1755081
 Conc: 1.74 ng/ml



#9 2,4-D

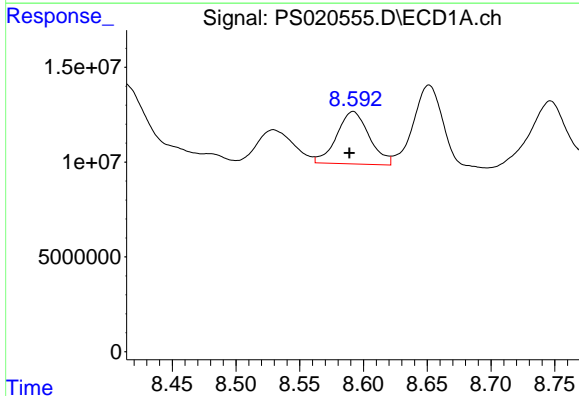
R.T.: 8.273 min
 Delta R.T.: -0.023 min
 Response: 1033689
 Conc: N.D.

Instrument :
 ECD_S
 ClientSampleId :



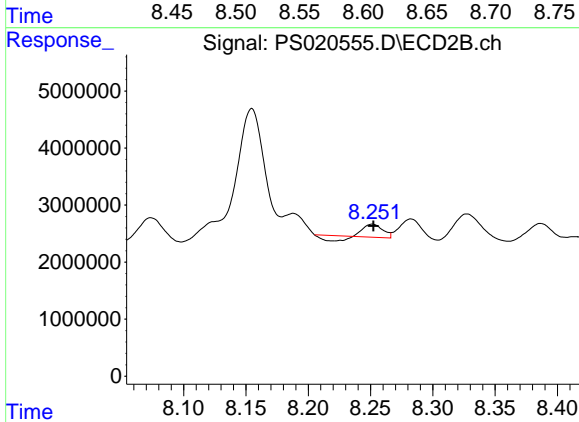
#9 2,4-D

R.T.: 7.861 min
 Delta R.T.: 0.023 min
 Response: 1707235
 Conc: 1.34 ng/ml



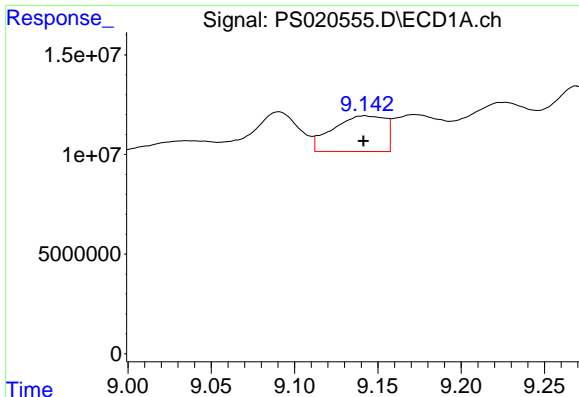
#10 Pentachlorophenol

R.T.: 8.592 min
 Delta R.T.: 0.003 min
 Response: 49029344
 Conc: 1.06 ng/ml



#10 Pentachlorophenol

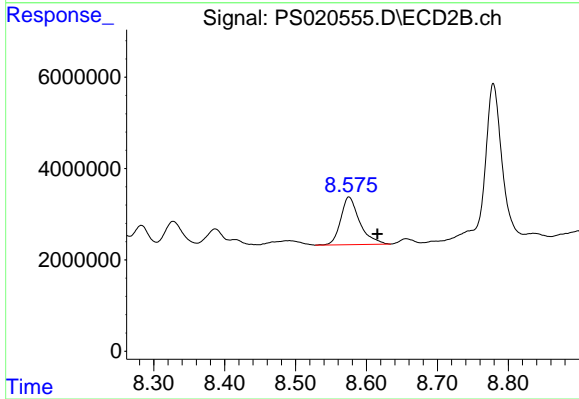
R.T.: 8.252 min
 Delta R.T.: 0.000 min
 Response: 1391699
 Conc: N.D.



#11 2,4,5-TP (SILVEX)

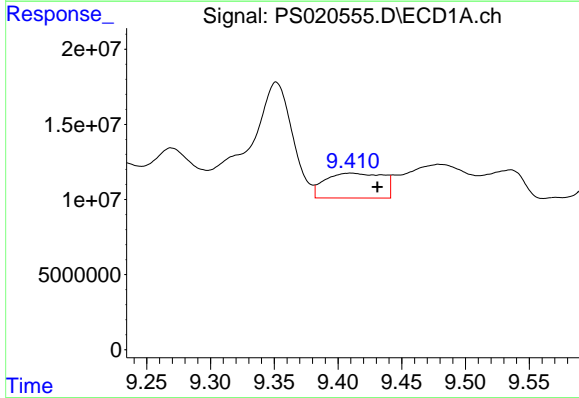
R.T.: 9.142 min
Delta R.T.: 0.000 min
Response: 39233315
Conc: 1.92 ng/ml

Instrument :
ECD_S
ClientSampleId :



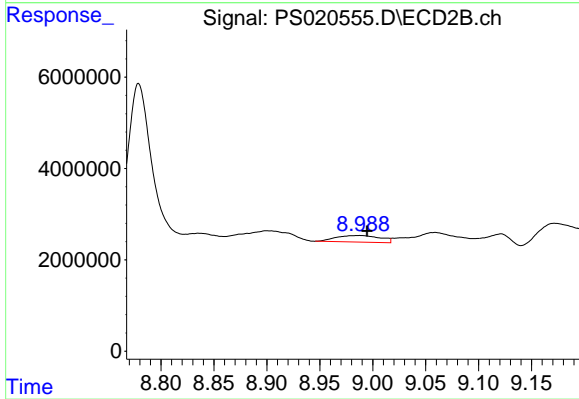
#11 2,4,5-TP (SILVEX)

R.T.: 8.575 min
Delta R.T.: -0.040 min
Response: 19350280
Conc: 3.27 ng/ml



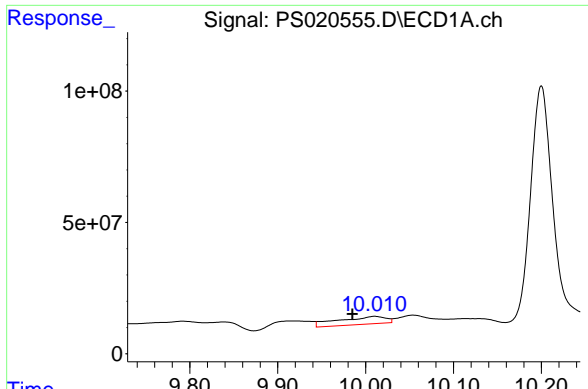
#12 2,4,5-T

R.T.: 9.410 min
Delta R.T.: -0.021 min
Response: 52158323
Conc: 2.36 ng/ml



#12 2,4,5-T

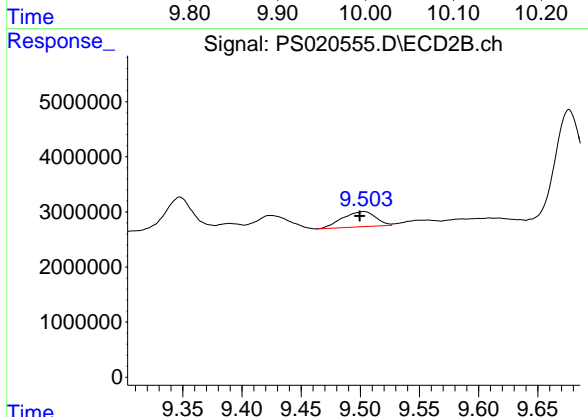
R.T.: 8.988 min
Delta R.T.: -0.007 min
Response: 4200183
Conc: N.D.



#13 2,4-DB

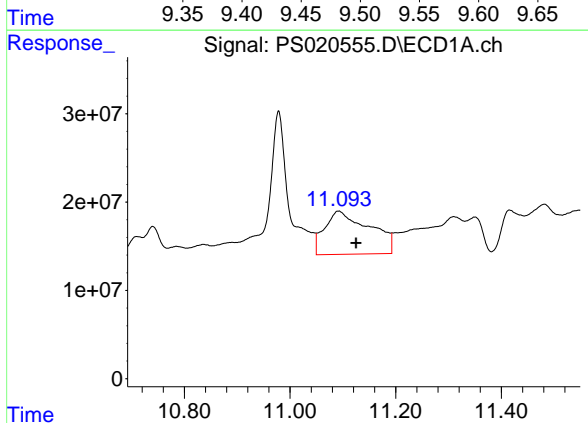
R.T.: 10.010 min
 Delta R.T.: 0.025 min
 Response: 111254793
 Conc: 30.64 ng/ml

Instrument :
 ECD_S
 ClientSampleId :



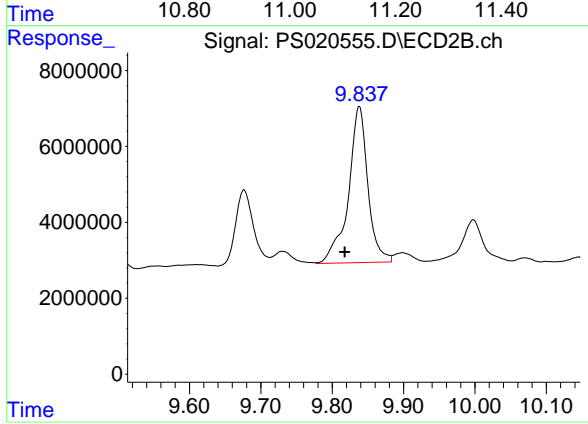
#13 2,4-DB

R.T.: 9.503 min
 Delta R.T.: 0.004 min
 Response: 5385726
 Conc: 7.53 ng/ml



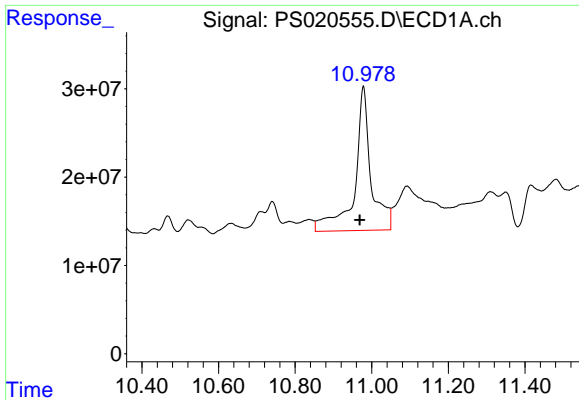
#14 DINOSEB

R.T.: 11.092 min
 Delta R.T.: -0.033 min
 Response: 290113502
 Conc: 15.80 ng/ml



#14 DINOSEB

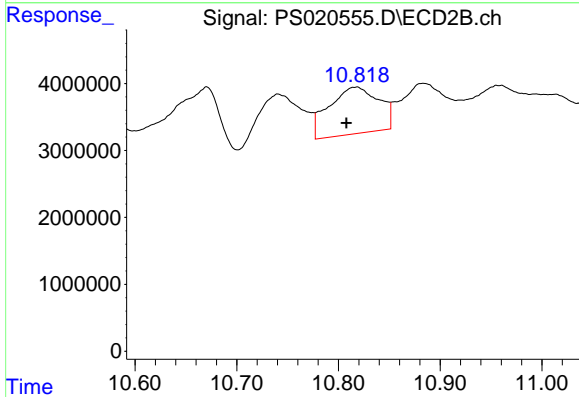
R.T.: 9.838 min
 Delta R.T.: 0.020 min
 Response: 78107107
 Conc: 18.22 ng/ml



#15 Picloram

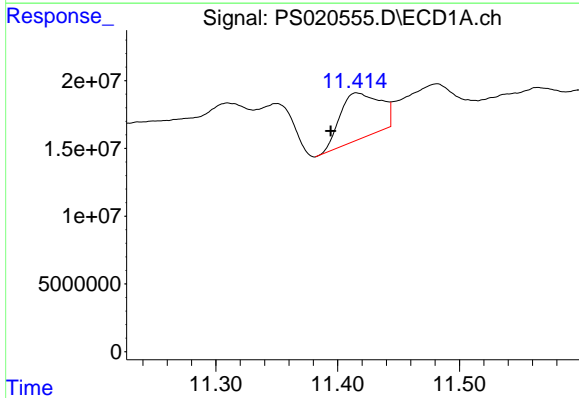
R.T.: 10.978 min
 Delta R.T.: 0.010 min
 Response: 480965079
 Conc: 15.98 ng/ml

Instrument :
 ECD_S
 ClientSampleId :



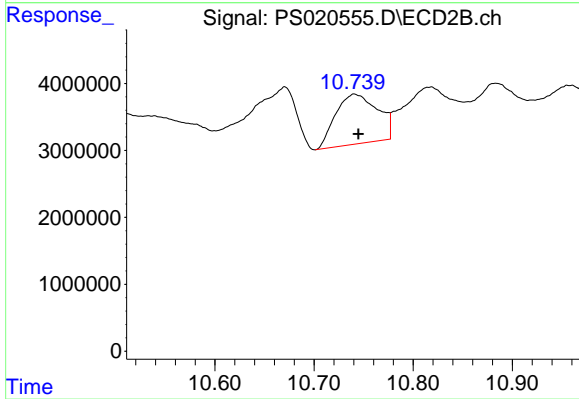
#15 Picloram

R.T.: 10.818 min
 Delta R.T.: 0.010 min
 Response: 23779404
 Conc: 2.95 ng/ml



#16 DCPA

R.T.: 11.416 min
 Delta R.T.: 0.022 min
 Response: 77596675
 Conc: 3.03 ng/ml



#16 DCPA

R.T.: 10.741 min
 Delta R.T.: -0.004 min
 Response: 21882568
 Conc: 2.97 ng/ml