

Data Path : Z:\pestpcbsrv\HPCHEM1\ECD_S\Data\PS091422\
 Data File : PS020563.D
 Signal(s) : Signal #1: ECD1A.ch Signal #2: ECD2B.ch
 Acq On : 15 Sep 2022 10:22
 Operator : AJ\MA
 Sample : N4569-01
 Misc :
 ALS Vial : 28 Sample Multiplier: 1

Instrument :
 ECD_S
 ClientSampleId :

Integration File signal 1: autoint1.e
 Integration File signal 2: autoint2.e
 Quant Time: Sep 15 17:09:39 2022
 Quant Method : Z:\pestpcbsrv\HPCHEM1\ECD_S\Method\PS091322.M
 Quant Title : 8080.M
 QLast Update : Wed Sep 14 02:51:16 2022
 Response via : Initial Calibration
 Integrator: ChemStation

Volume Inj. : 2 µl
 Signal #1 Phase : Rtx-CLPesticides Signal #2 Phase: Rtx-CLPesticides2
 Signal #1 Info : 30M x 0.32mm x0.5 Signal #2 Info : 30M x 0.32mm x 0.25µm

	Compound	RT#1	RT#2	Resp#1	Resp#2	ng/ml	ng/ml

System Monitoring Compounds							
4) S	2,4-DCAA	7.173	6.756	636.9E6	158.3E6	185.066	185.830
Target Compounds							
1) T	Dalapon	2.961f	2.477	216.3E6	46047013	43.101	37.976
2) T	3,5-DICHL...	6.411	5.966	1257005	104.4E6	<MDL	76.483 #
3) T	4-Nitroph...	7.005	6.404	12750182	4361323	133.732	9.255 #
5) T	DICAMBA	7.344	6.955	11962424	702954	<MDL	<MDL #
6) T	MCP P	7.527	7.020	39438526	3565998	3.787	1.235 #
7) T	MCPA	7.657	7.211	50930035	47261360	3.434	10.946 #
8) T	DICHLORPROP	8.059	7.563	41329050	33358372	11.463	33.062 #
9) T	2,4-D	8.284	7.861	23749950	1147768	5.110	<MDL #
10) T	Pentachlo...	8.582	8.255	23422343	5619781	<MDL	<MDL #
11) T	2,4,5-TP ...	9.127	8.651	15194234	10093912	<MDL	1.705 #
12) T	2,4,5-T	9.434	8.980	12818370	7473853	<MDL	1.371 #
13) T	2,4-DB	9.970	9.503	20309238	20732049	5.593	28.980 #
14) T	DINOSEB	11.090	9.842	461.3E6	52435863	25.116	12.229 #
15) T	Picloram	10.922f	10.819	411.2E6	43752504	13.664	5.433 #
16) T	DCPA	11.426	10.735	46034900	17842459	1.797	2.419 #

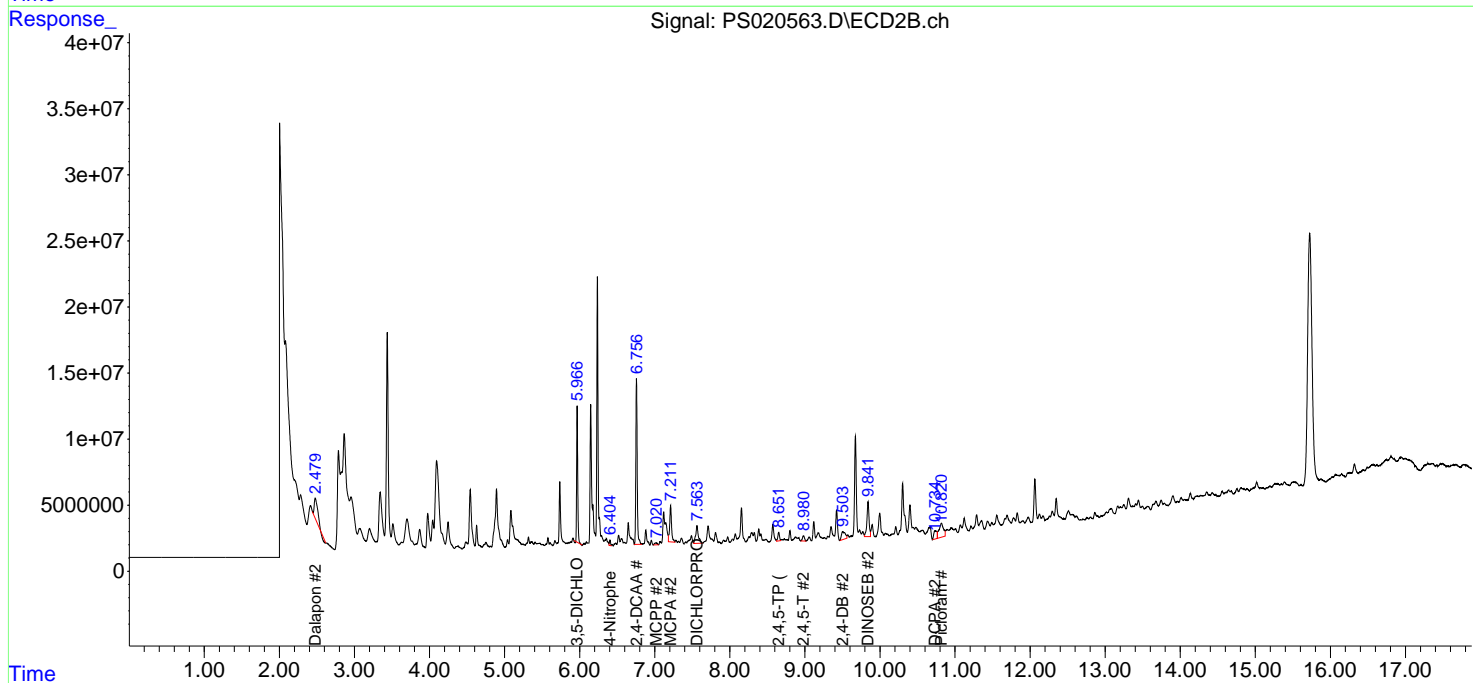
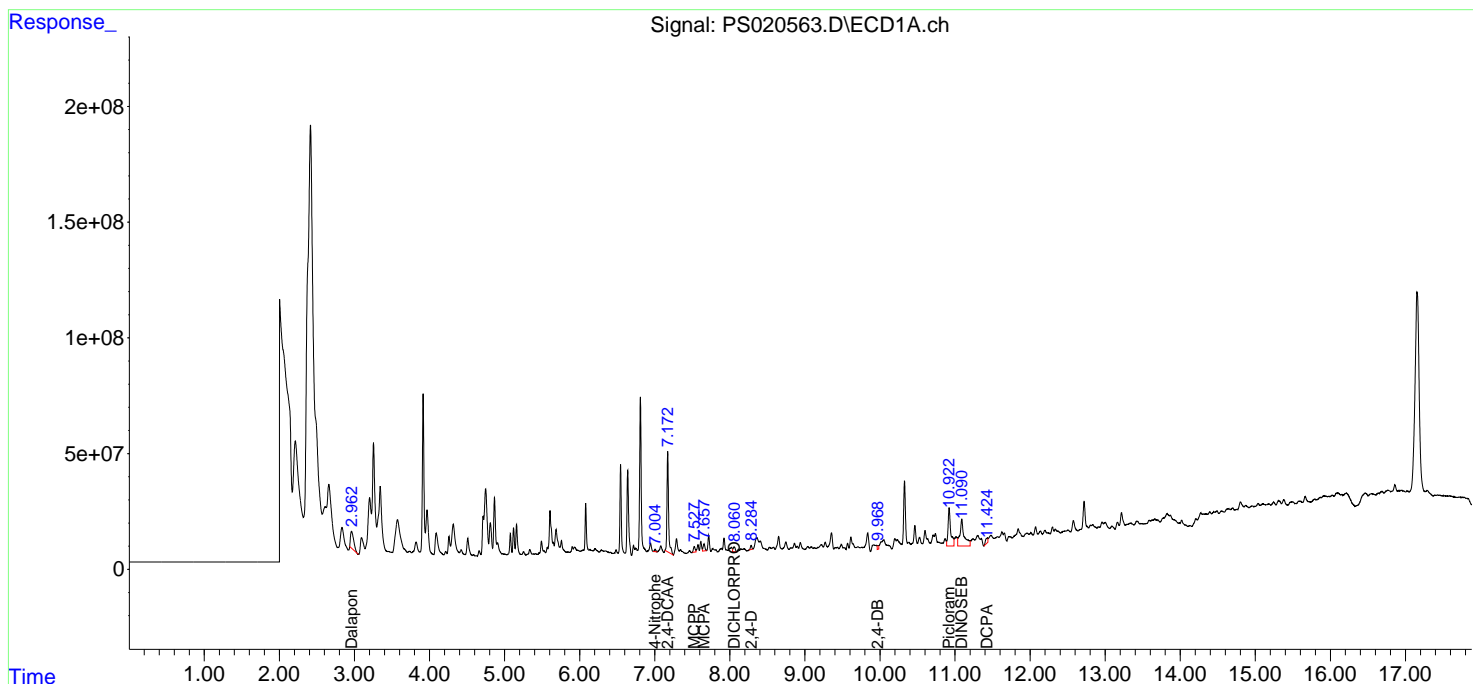
(f)=RT Delta > 1/2 Window (#)=Amounts differ by > 25% (m)=manual int.

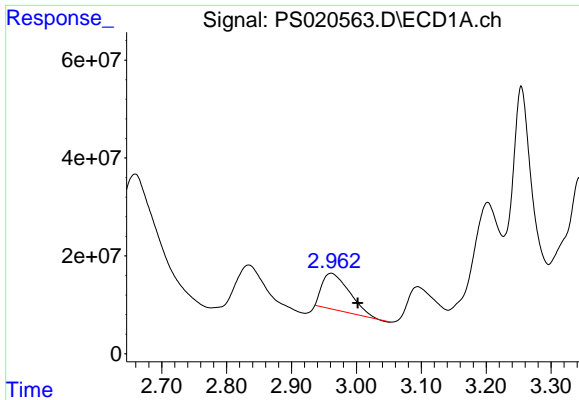
Data Path : Z:\pestpcbsrv\HPCHEM1\ECD_S\Data\PS091422\
 Data File : PS020563.D
 Signal(s) : Signal #1: ECD1A.ch Signal #2: ECD2B.ch
 Acq On : 15 Sep 2022 10:22
 Operator : AJ\MA
 Sample : N4569-01
 Misc :
 ALS Vial : 28 Sample Multiplier: 1

Instrument :
 ECD_S
 ClientSampleId :

Integration File signal 1: autoint1.e
 Integration File signal 2: autoint2.e
 Quant Time: Sep 15 17:09:39 2022
 Quant Method : Z:\pestpcbsrv\HPCHEM1\ECD_S\Method\PS091322.M
 Quant Title : 8080.M
 QLast Update : Wed Sep 14 02:51:16 2022
 Response via : Initial Calibration
 Integrator: ChemStation

Volume Inj. : 2 µl
 Signal #1 Phase : Rtx-CLPesticides Signal #2 Phase: Rtx-CLPesticides2
 Signal #1 Info : 30M x 0.32mm x0.5 Signal #2 Info : 30M x 0.32mm x 0.25µm

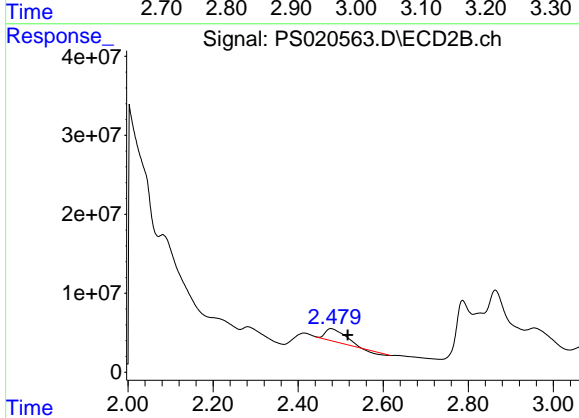




#1 Dalapon

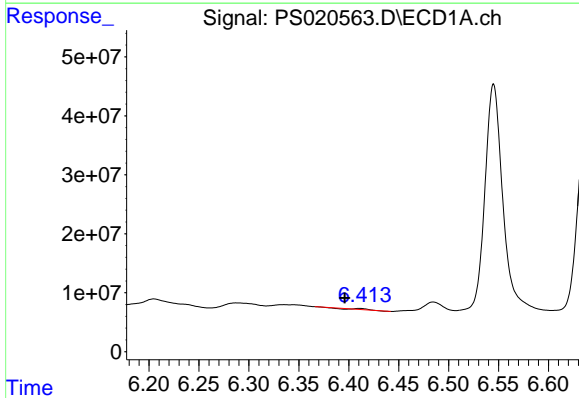
R.T.: 2.961 min
Delta R.T.: -0.041 min
Response: 216328099
Conc: 43.10 ng/ml

Instrument :
ECD_S
ClientSampleId :



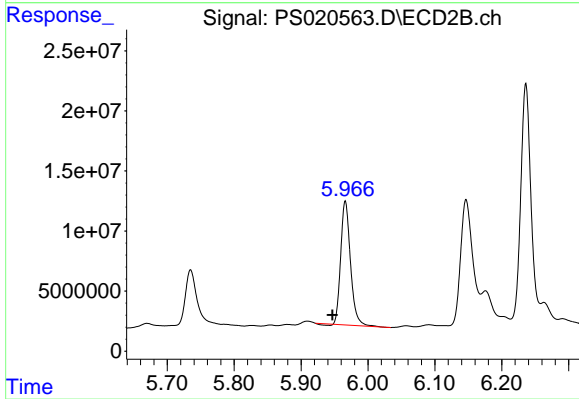
#1 Dalapon

R.T.: 2.477 min
Delta R.T.: -0.040 min
Response: 46047013
Conc: 37.98 ng/ml



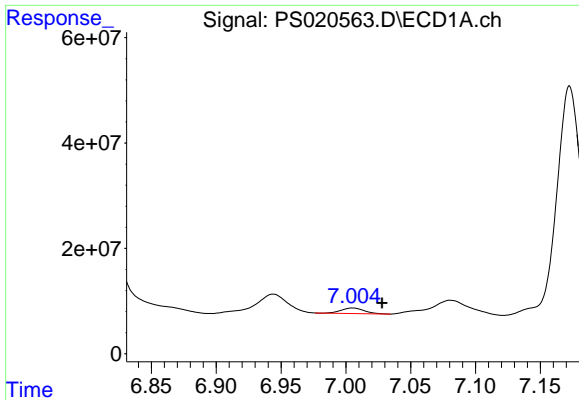
#2 3,5-DICHLOROBENZOIC ACID

R.T.: 6.411 min
Delta R.T.: 0.015 min
Response: 1257005
Conc: N.D.



#2 3,5-DICHLOROBENZOIC ACID

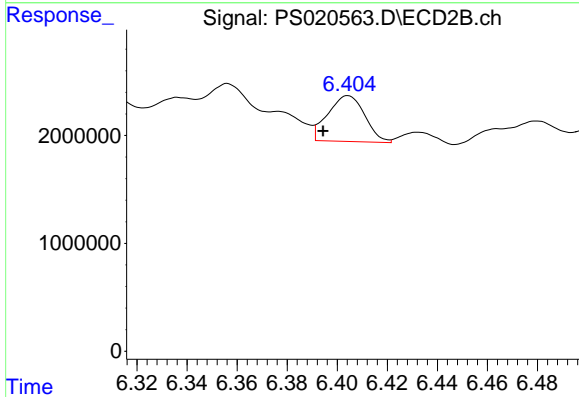
R.T.: 5.966 min
Delta R.T.: 0.020 min
Response: 104371020
Conc: 76.48 ng/ml



#3 4-Nitrophenol

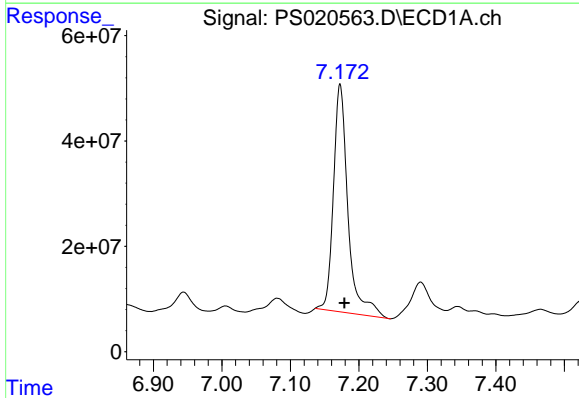
R.T.: 7.005 min
 Delta R.T.: -0.023 min
 Response: 12750182
 Conc: 133.73 ng/ml

Instrument :
 ECD_S
 ClientSampleId :



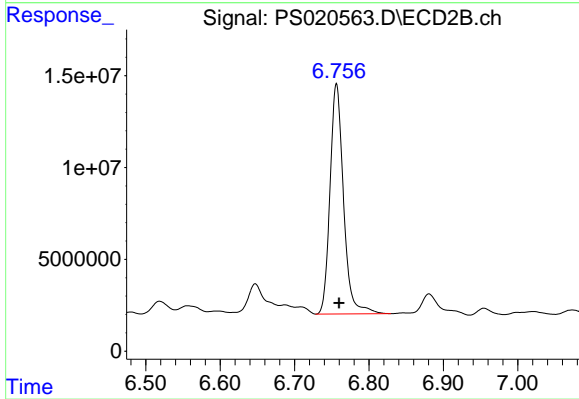
#3 4-Nitrophenol

R.T.: 6.404 min
 Delta R.T.: 0.010 min
 Response: 4361323
 Conc: 9.26 ng/ml



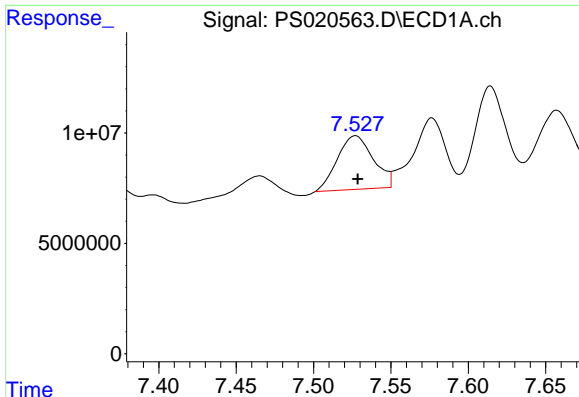
#4 2,4-DCAA

R.T.: 7.173 min
 Delta R.T.: -0.006 min
 Response: 636903670
 Conc: 185.07 ng/ml



#4 2,4-DCAA

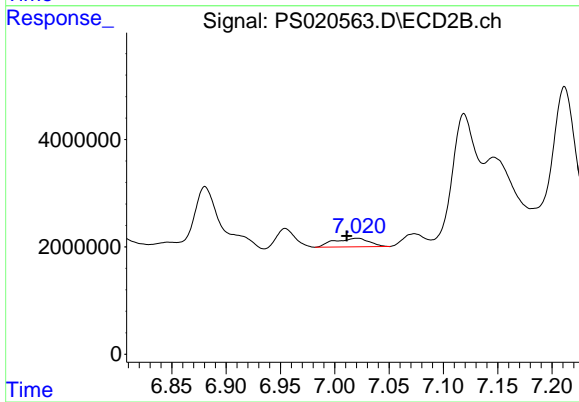
R.T.: 6.756 min
 Delta R.T.: -0.003 min
 Response: 158270619
 Conc: 185.83 ng/ml



#6 MCPP

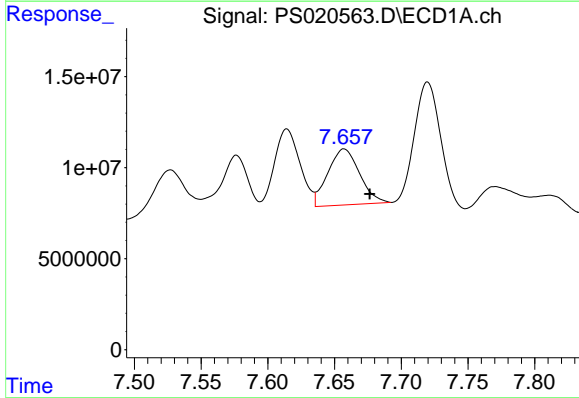
R.T.: 7.527 min
 Delta R.T.: -0.002 min
 Response: 39438526
 Conc: 3.79 ug/ml

Instrument :
 ECD_S
 ClientSampleId :



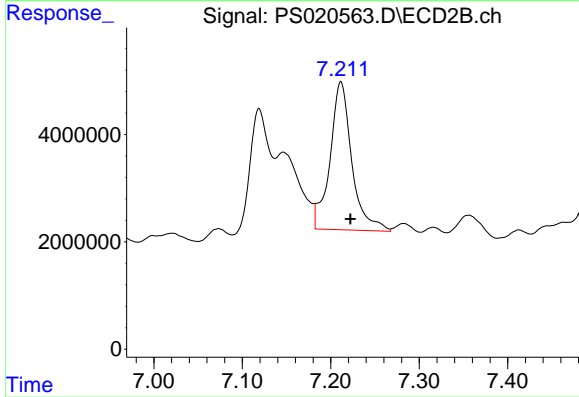
#6 MCPP

R.T.: 7.020 min
 Delta R.T.: 0.009 min
 Response: 3565998
 Conc: 1.23 ug/ml



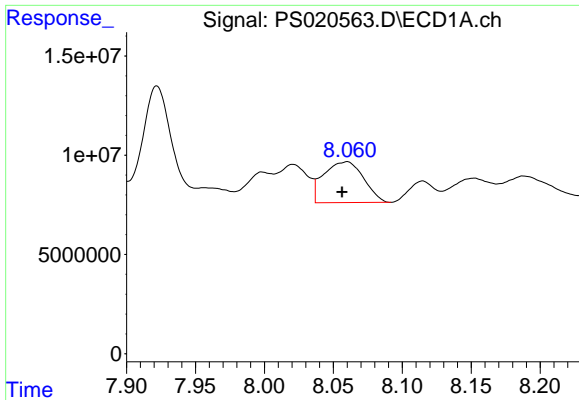
#7 MCPA

R.T.: 7.657 min
 Delta R.T.: -0.019 min
 Response: 50930035
 Conc: 3.43 ug/ml



#7 MCPA

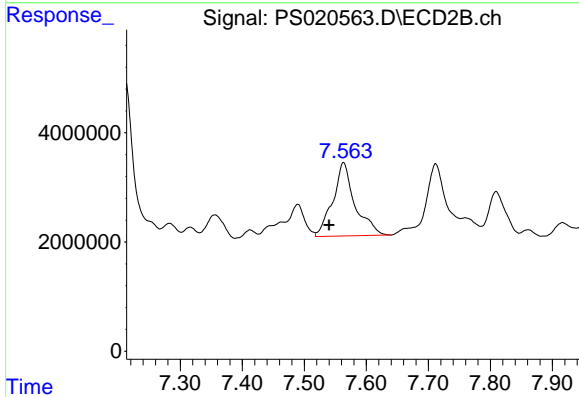
R.T.: 7.211 min
 Delta R.T.: -0.011 min
 Response: 47261360
 Conc: 10.95 ug/ml



#8 DICHLORPROP

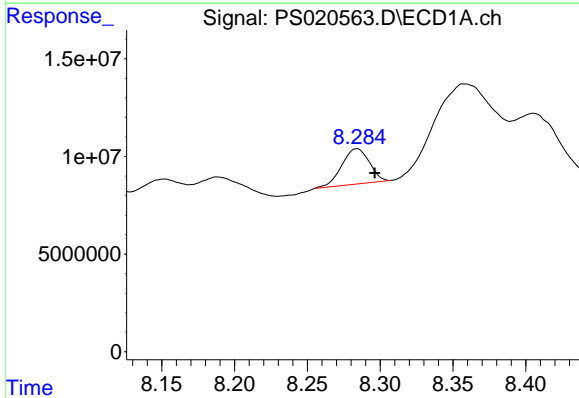
R.T.: 8.059 min
 Delta R.T.: 0.002 min
 Response: 41329050
 Conc: 11.46 ng/ml

Instrument :
 ECD_S
 ClientSampleId :



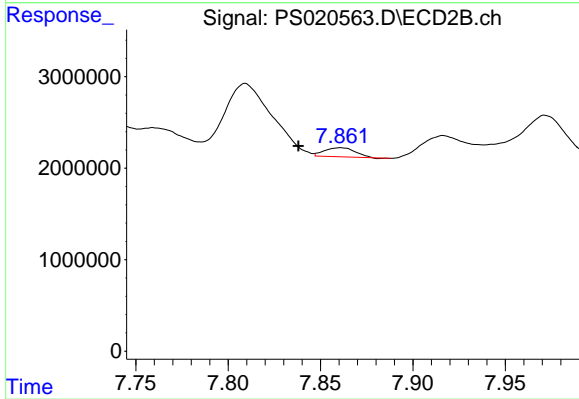
#8 DICHLORPROP

R.T.: 7.563 min
 Delta R.T.: 0.023 min
 Response: 33358372
 Conc: 33.06 ng/ml



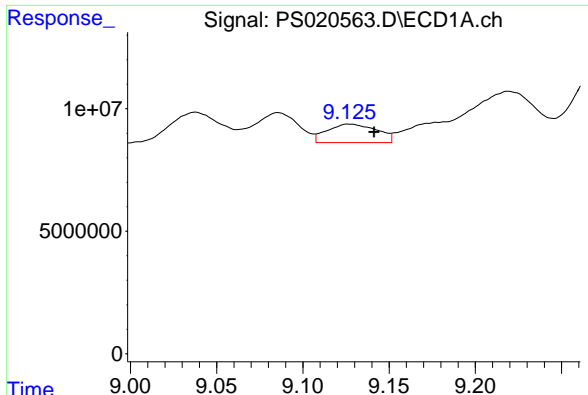
#9 2,4-D

R.T.: 8.284 min
 Delta R.T.: -0.012 min
 Response: 23749950
 Conc: 5.11 ng/ml



#9 2,4-D

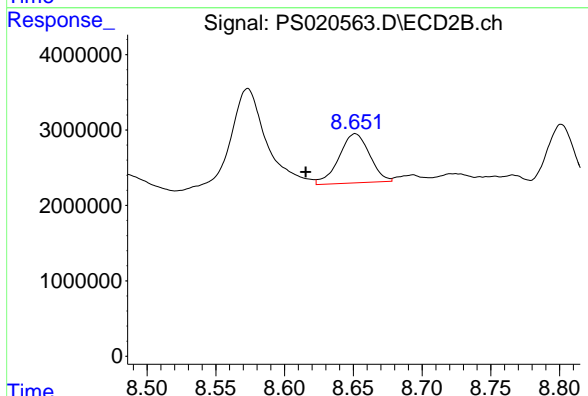
R.T.: 7.861 min
 Delta R.T.: 0.023 min
 Response: 1147768
 Conc: N.D.



#11 2,4,5-TP (SILVEX)

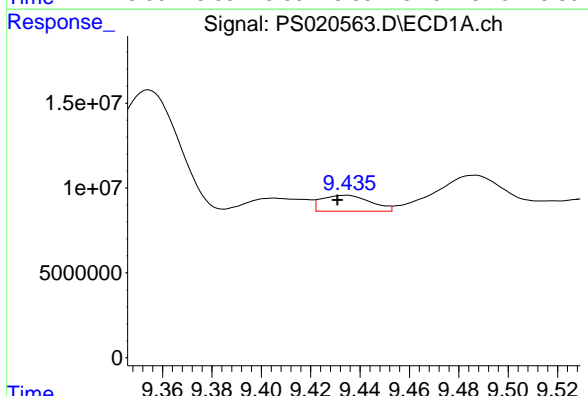
R.T.: 9.127 min
 Delta R.T.: -0.014 min
 Response: 15194234
 Conc: N.D.

Instrument :
 ECD_S
 ClientSampleId :



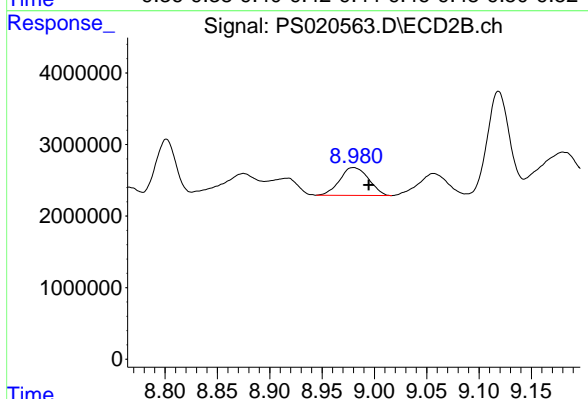
#11 2,4,5-TP (SILVEX)

R.T.: 8.651 min
 Delta R.T.: 0.036 min
 Response: 10093912
 Conc: 1.71 ng/ml



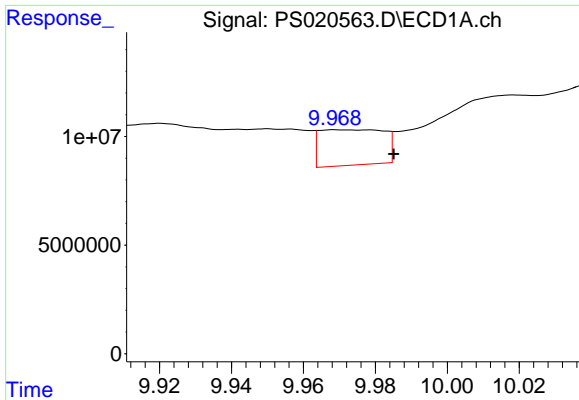
#12 2,4,5-T

R.T.: 9.434 min
 Delta R.T.: 0.003 min
 Response: 12818370
 Conc: N.D.



#12 2,4,5-T

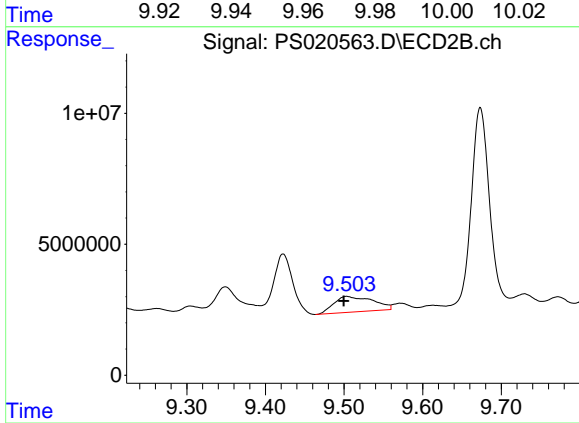
R.T.: 8.980 min
 Delta R.T.: -0.015 min
 Response: 7473853
 Conc: 1.37 ng/ml



#13 2,4-DB

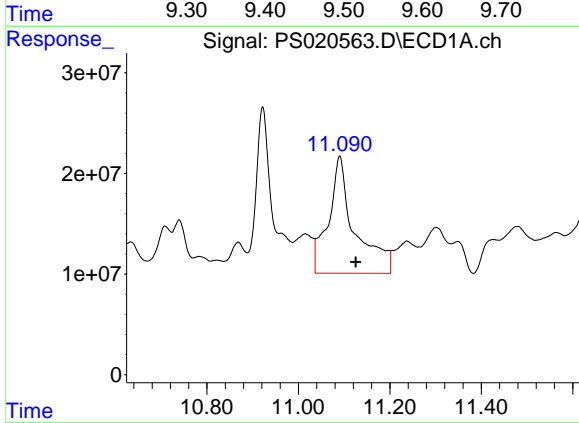
R.T.: 9.970 min
 Delta R.T.: -0.015 min
 Response: 20309238
 Conc: 5.59 ng/ml

Instrument :
 ECD_S
 ClientSampleId :



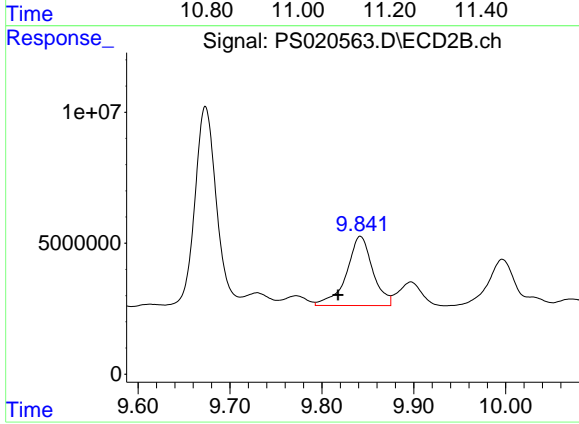
#13 2,4-DB

R.T.: 9.503 min
 Delta R.T.: 0.004 min
 Response: 20732049
 Conc: 28.98 ng/ml



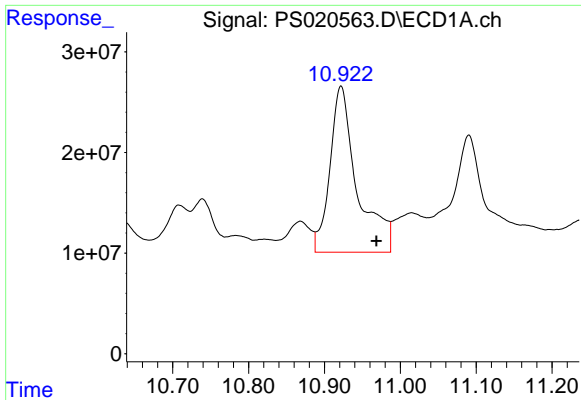
#14 DINOSEB

R.T.: 11.090 min
 Delta R.T.: -0.035 min
 Response: 461270093
 Conc: 25.12 ng/ml



#14 DINOSEB

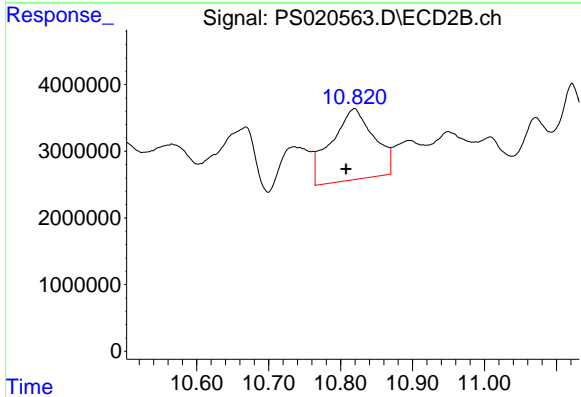
R.T.: 9.842 min
 Delta R.T.: 0.024 min
 Response: 52435863
 Conc: 12.23 ng/ml



#15 Picloram

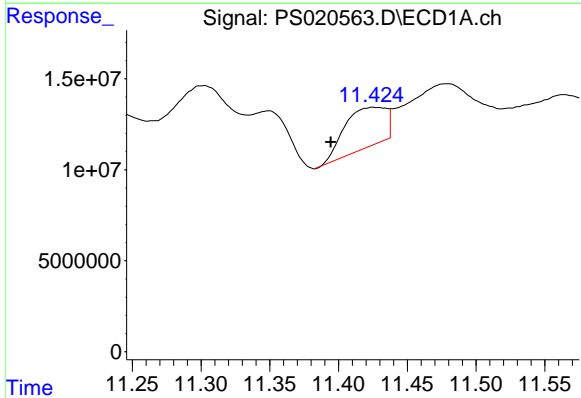
R.T.: 10.922 min
 Delta R.T.: -0.047 min
 Response: 411188604
 Conc: 13.66 ng/ml

Instrument :
 ECD_S
 ClientSampleId :



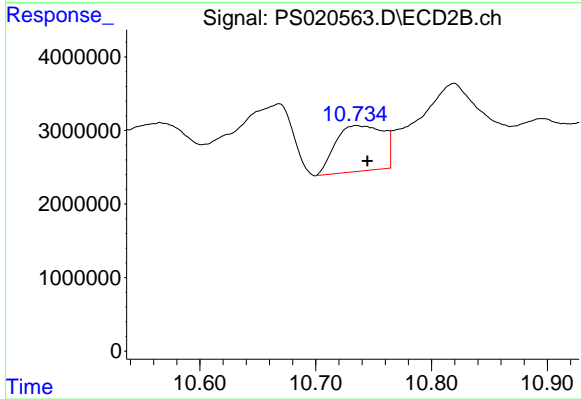
#15 Picloram

R.T.: 10.819 min
 Delta R.T.: 0.011 min
 Response: 43752504
 Conc: 5.43 ng/ml



#16 DCPA

R.T.: 11.426 min
 Delta R.T.: 0.032 min
 Response: 46034900
 Conc: 1.80 ng/ml



#16 DCPA

R.T.: 10.735 min
 Delta R.T.: -0.009 min
 Response: 17842459
 Conc: 2.42 ng/ml