

Data Path : Z:\pestpcbsrv\HPCHEM1\ECD_S\Data\PS091423\
 Data File : PS024312.D
 Signal(s) : Signal #1: ECD1A.ch Signal #2: ECD2B.ch
 Acq On : 14 Sep 2023 22:55
 Operator : AR\AJ
 Sample : 04401-01
 Misc :
 ALS Vial : 12 Sample Multiplier: 1

Instrument :
 ECD_S
 ClientSampleId :

Integration File signal 1: autoint1.e
 Integration File signal 2: autoint2.e
 Quant Time: Sep 15 02:09:11 2023
 Quant Method : Z:\pestpcbsrv\HPCHEM1\ECD_S\Method\PS082823.M
 Quant Title : 8080.M
 QLast Update : Mon Aug 28 16:48:10 2023
 Response via : Initial Calibration
 Integrator: ChemStation

Volume Inj. : 2 µl
 Signal #1 Phase : Rtx-CLPesticides Signal #2 Phase: Rtx-CLPesticides2
 Signal #1 Info : 30M x 0.32mm x0.5 Signal #2 Info : 30M x 0.32mm x 0.25µm

	Compound	RT#1	RT#2	Resp#1	Resp#2	ng/ml	ng/ml

System Monitoring Compounds							
4) S	2,4-DCAA	6.361	6.788	558.5E6	183.0E6	280.344	272.422
Target Compounds							
2) T	3,5-DICHL...	5.750	5.994	18373548	-158186	6.044	N.D. #
3) T	4-Nitroph...	6.221	6.419	1535900	3761317	1.236	8.919 #
5) T	DICAMBA	6.507	6.941	3759558	1985571	<MDL	<MDL #
6) T	MCP	6.679	7.104f	83732150	-795710	13.446	N.D. #
7) T	MCPA	6.788	7.250	33012822	3257956	3.804	1.115 #
8) T	DICHLORPROP	7.078	7.577	7775886	51199216	3.420	70.467 #
9) T	2,4-D	7.250f	7.856	89428896	3036568	33.621	3.408 #
10) T	Pentachlo...	7.519	8.275	195.4E6	48129734	6.250	4.543 #
12) T	2,4,5-T	8.302	8.988	11576812	6754348	<MDL	1.683 #
13) T	2,4-DB	8.812	9.507	104.1E6	18170892	48.280	39.535
14) T	DINOSEB	9.880	9.845	13171985	1984991	1.363	<MDL #
15) T	Picloram	9.681	10.794	-16282979	8657211	N.D.	1.458
16) T	DCPA	10.130	10.761	73609595	2186991	4.546	<MDL #

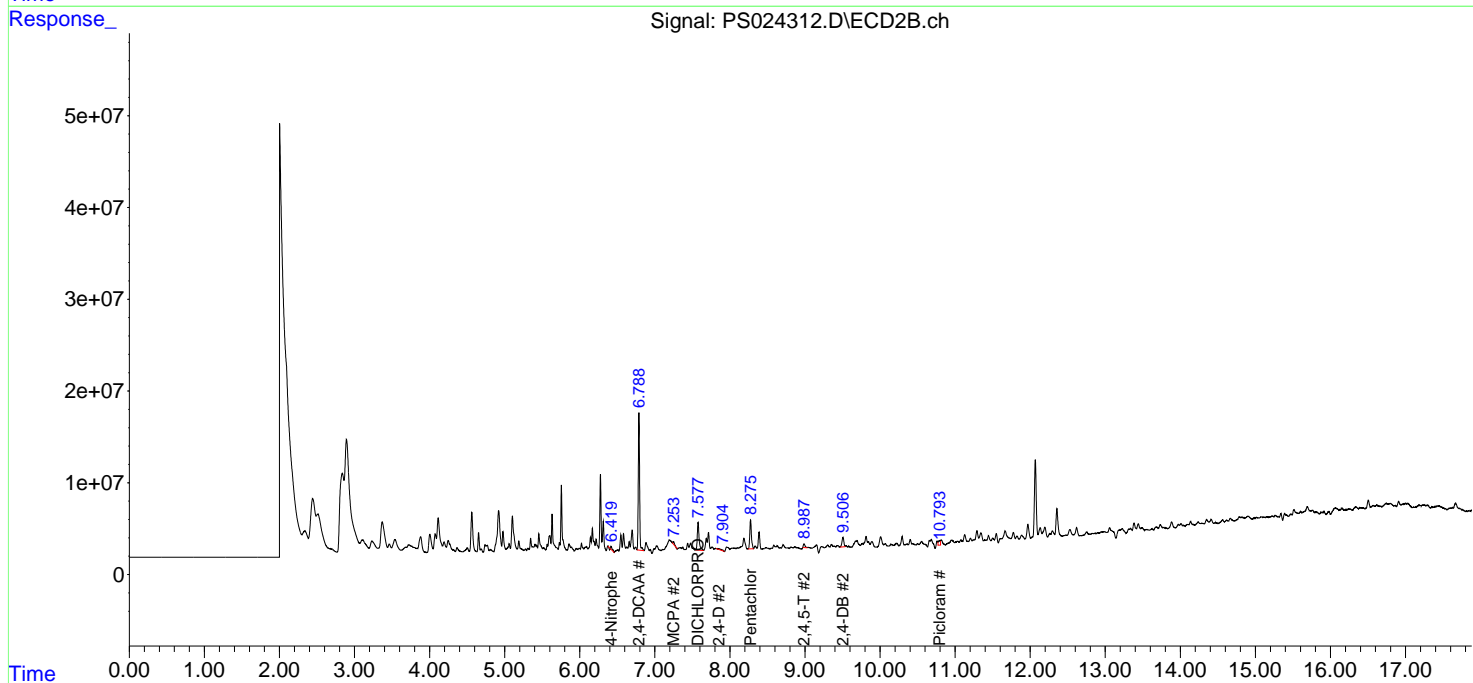
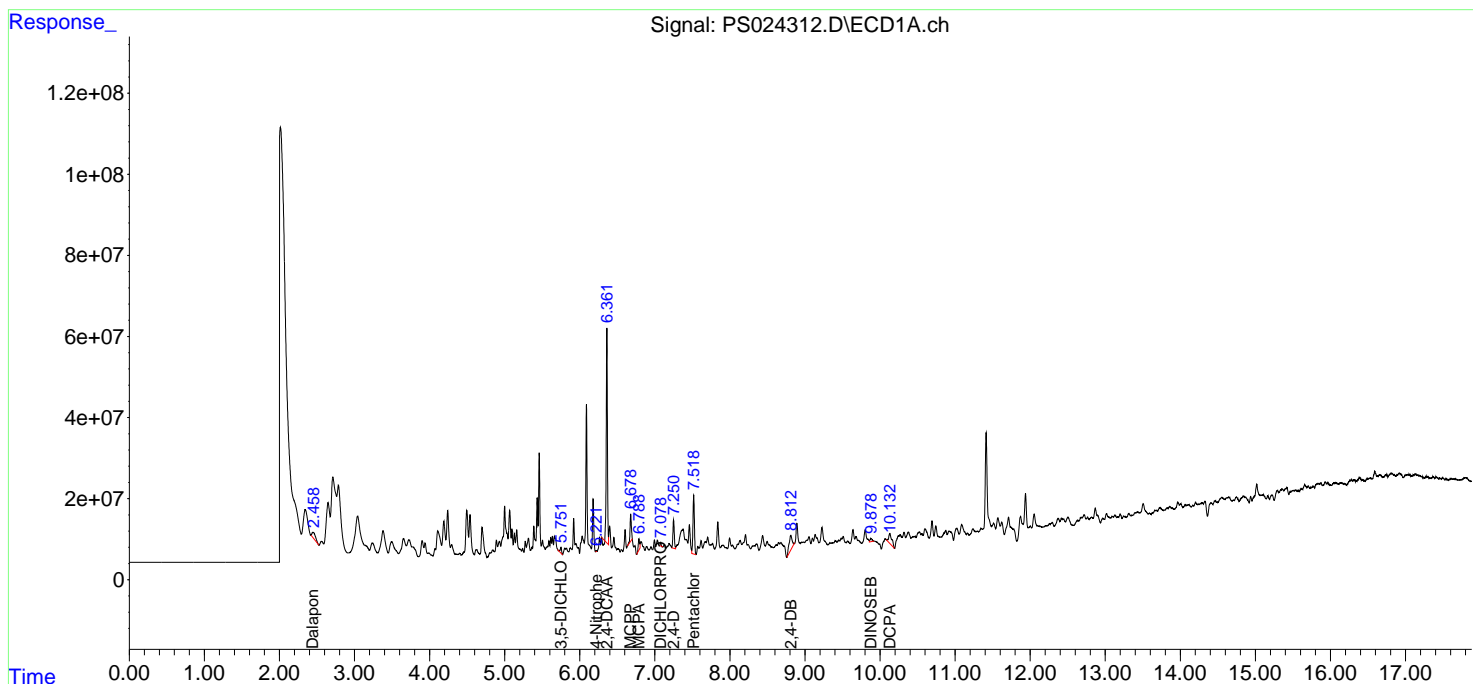
(f)=RT Delta > 1/2 Window (#)=Amounts differ by > 25% (m)=manual int.

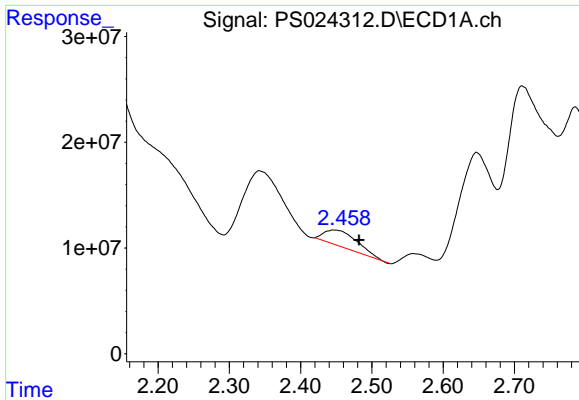
Data Path : Z:\pestpcbsrv\HPCHEM1\ECD_S\Data\PS091423\
 Data File : PS024312.D
 Signal(s) : Signal #1: ECD1A.ch Signal #2: ECD2B.ch
 Acq On : 14 Sep 2023 22:55
 Operator : AR\AJ
 Sample : 04401-01
 Misc :
 ALS Vial : 12 Sample Multiplier: 1

Instrument :
 ECD_S
 ClientSampleId :

Integration File signal 1: autoint1.e
 Integration File signal 2: autoint2.e
 Quant Time: Sep 15 02:09:11 2023
 Quant Method : Z:\pestpcbsrv\HPCHEM1\ECD_S\Method\PS082823.M
 Quant Title : 8080.M
 QLast Update : Mon Aug 28 16:48:10 2023
 Response via : Initial Calibration
 Integrator: ChemStation

Volume Inj. : 2 µl
 Signal #1 Phase : Rtx-CLPesticides Signal #2 Phase: Rtx-CLPesticides2
 Signal #1 Info : 30M x 0.32mm x0.5 Signal #2 Info : 30M x 0.32mm x 0.25µm

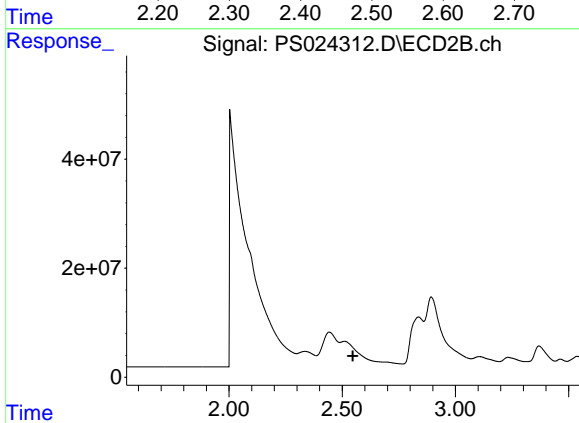




#1 Dalapon

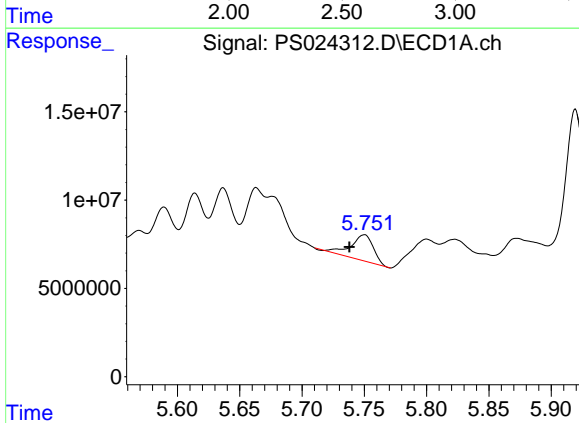
R.T.: 2.447 min
 Delta R.T.: -0.035 min
 Response: 47998828
 Conc: 22.08 ng/ml

Instrument :
 ECD_S
 ClientSampleId :



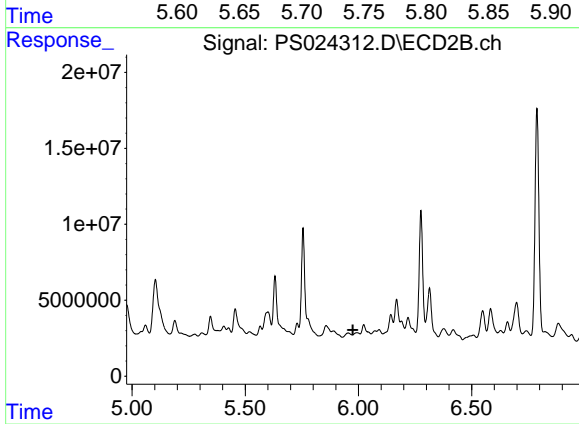
#1 Dalapon

R.T.: 2.510 min
 Delta R.T.: -0.036 min
 Response: -92809620
 Conc: N.D.



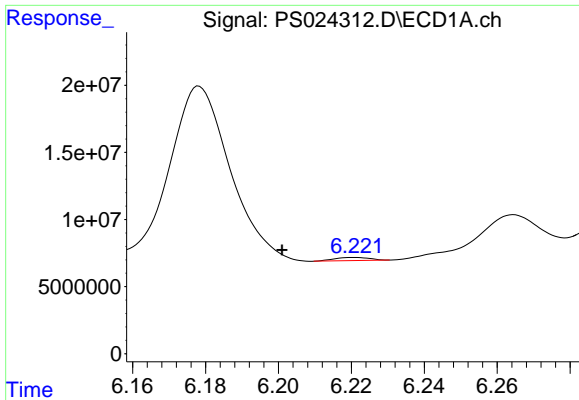
#2 3,5-DICHLOROBENZOIC ACID

R.T.: 5.750 min
 Delta R.T.: 0.012 min
 Response: 18373548
 Conc: 6.04 ng/ml



#2 3,5-DICHLOROBENZOIC ACID

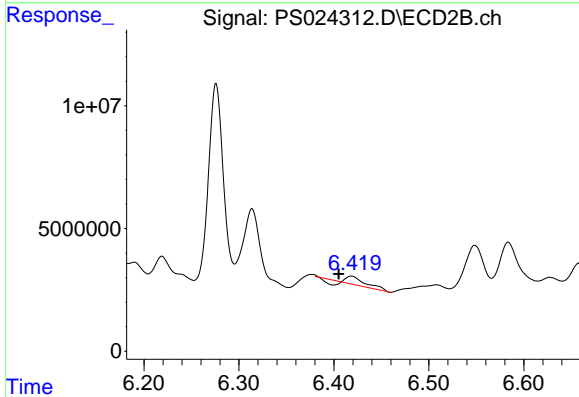
R.T.: 5.994 min
 Delta R.T.: 0.018 min
 Response: -158186
 Conc: N.D.



#3 4-Nitrophenol

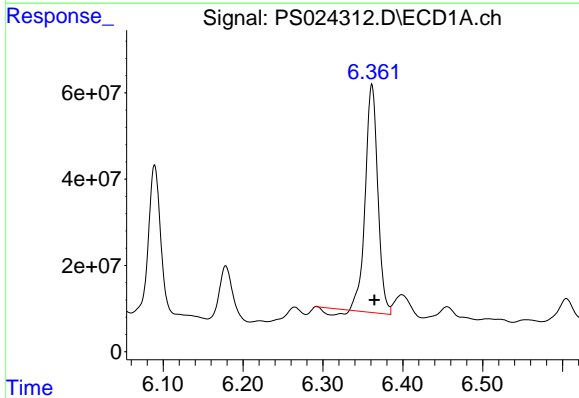
R.T.: 6.221 min
Delta R.T.: 0.020 min
Response: 1535900
Conc: 1.24 ng/ml

Instrument :
ECD_S
ClientSampleId :



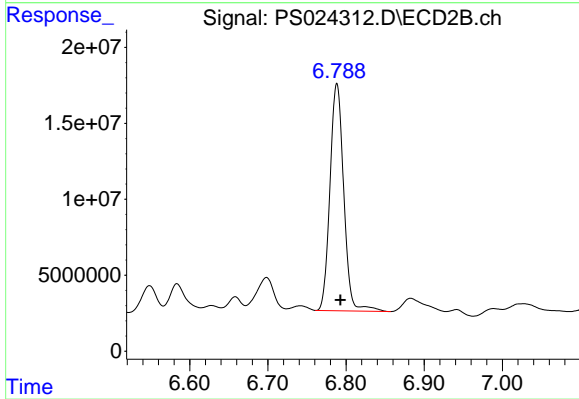
#3 4-Nitrophenol

R.T.: 6.419 min
Delta R.T.: 0.013 min
Response: 3761317
Conc: 8.92 ng/ml



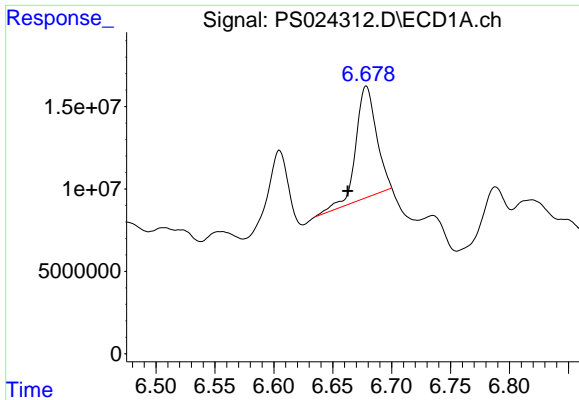
#4 2,4-DCAA

R.T.: 6.361 min
Delta R.T.: -0.003 min
Response: 558535588
Conc: 280.34 ng/ml



#4 2,4-DCAA

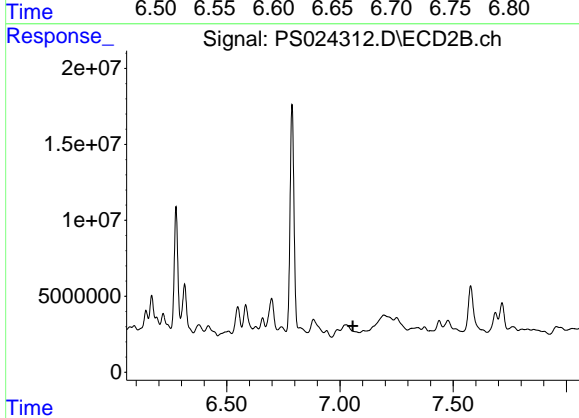
R.T.: 6.788 min
Delta R.T.: -0.005 min
Response: 182956345
Conc: 272.42 ng/ml



#6 MCPP

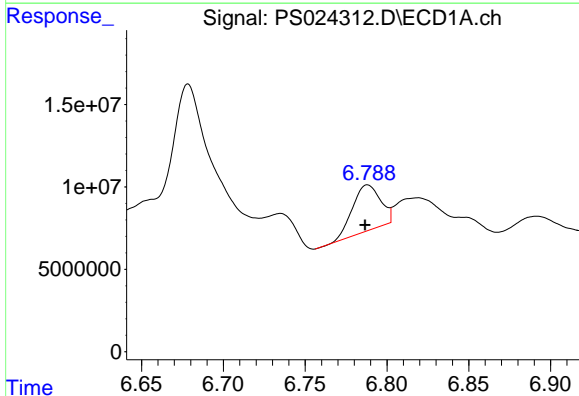
R.T.: 6.679 min
 Delta R.T.: 0.016 min
 Response: 83732150
 Conc: 13.45 ug/ml

Instrument :
 ECD_S
 ClientSampleId :



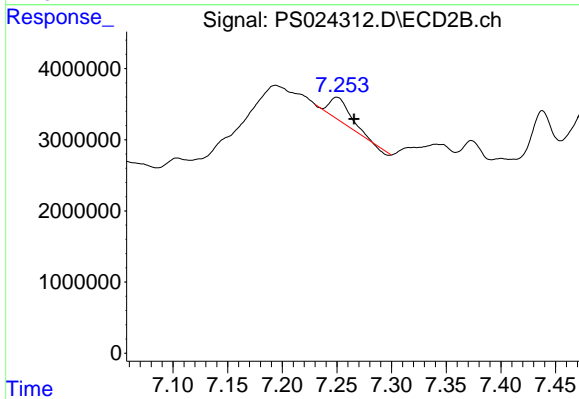
#6 MCPP

R.T.: 7.104 min
 Delta R.T.: 0.047 min
 Response: -795710
 Conc: N.D.



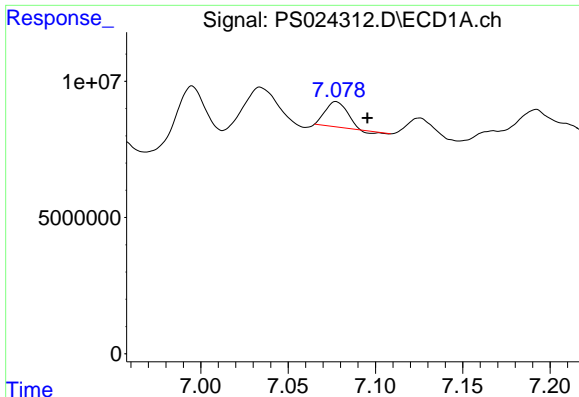
#7 MCPA

R.T.: 6.788 min
 Delta R.T.: 0.002 min
 Response: 33012822
 Conc: 3.80 ug/ml



#7 MCPA

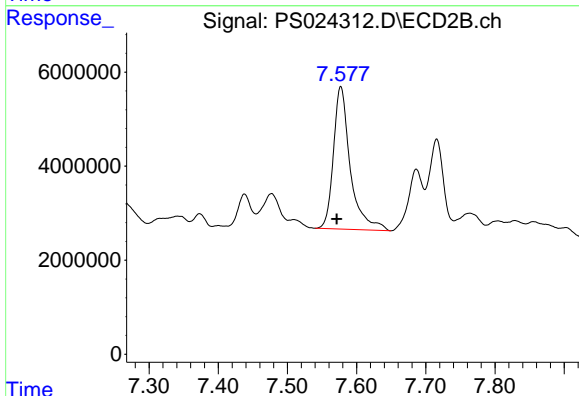
R.T.: 7.250 min
 Delta R.T.: -0.016 min
 Response: 3257956
 Conc: 1.11 ug/ml



#8 DICHLORPROP

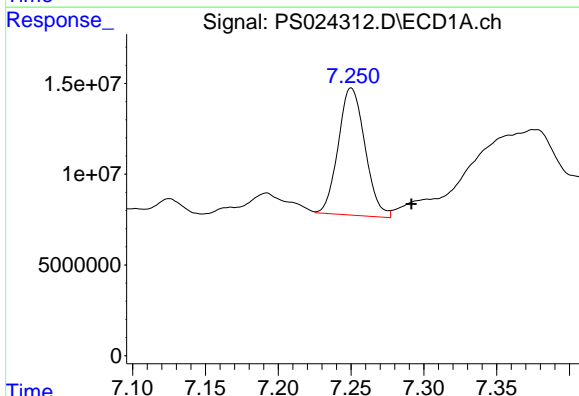
R.T.: 7.078 min
 Delta R.T.: -0.018 min
 Response: 7775886
 Conc: 3.42 ng/ml

Instrument :
 ECD_S
 ClientSampleId :



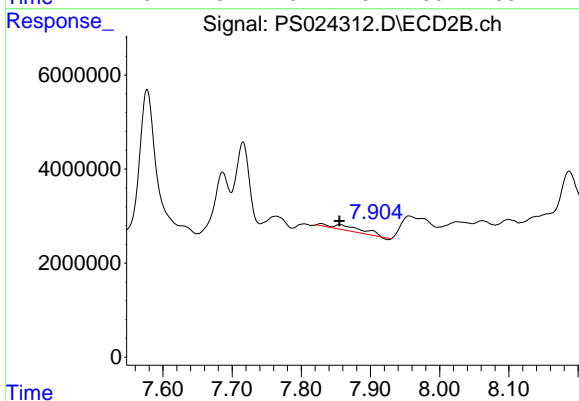
#8 DICHLORPROP

R.T.: 7.577 min
 Delta R.T.: 0.006 min
 Response: 51199216
 Conc: 70.47 ng/ml



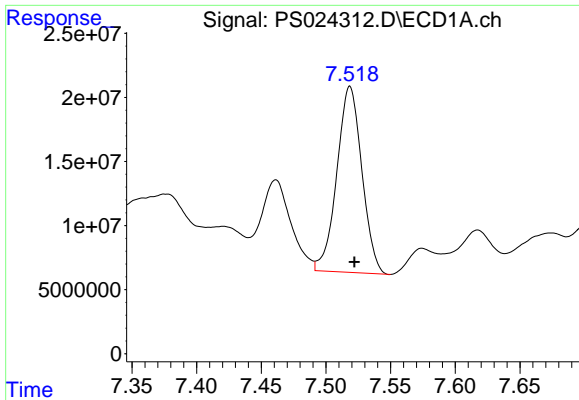
#9 2,4-D

R.T.: 7.250 min
 Delta R.T.: -0.041 min
 Response: 89428896
 Conc: 33.62 ng/ml



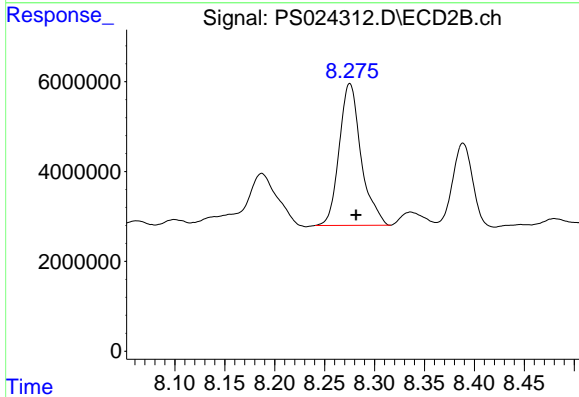
#9 2,4-D

R.T.: 7.856 min
 Delta R.T.: 0.000 min
 Response: 3036568
 Conc: 3.41 ng/ml

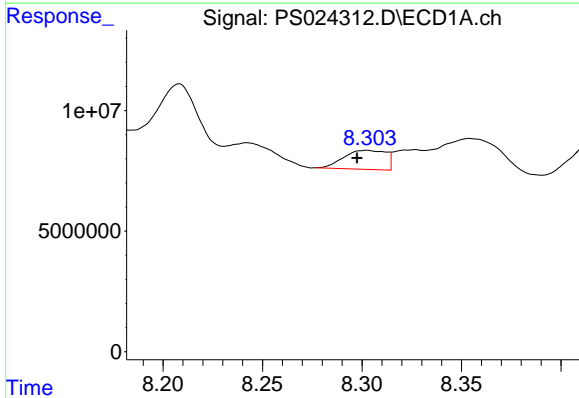


#10 Pentachlorophenol
 R.T.: 7.519 min
 Delta R.T.: -0.003 min
 Response: 195439485
 Conc: 6.25 ng/ml

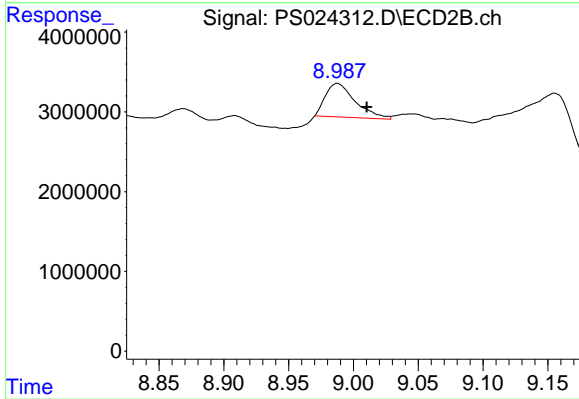
Instrument :
 ECD_S
 ClientSampleId :



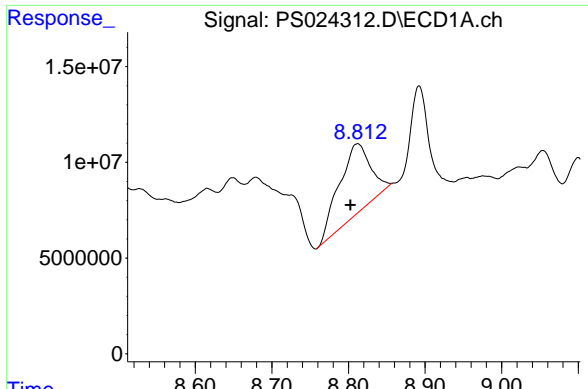
#10 Pentachlorophenol
 R.T.: 8.275 min
 Delta R.T.: -0.006 min
 Response: 48129734
 Conc: 4.54 ng/ml



#12 2,4,5-T
 R.T.: 8.302 min
 Delta R.T.: 0.005 min
 Response: 11576812
 Conc: N.D.



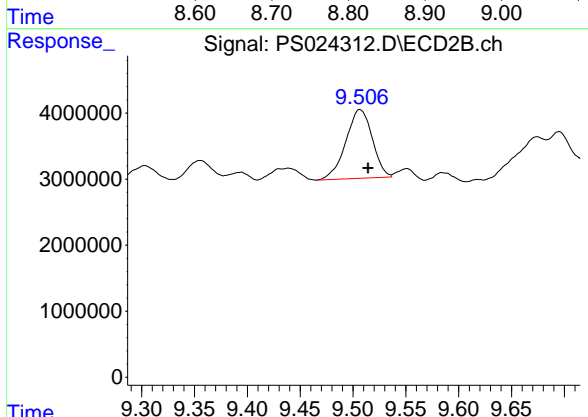
#12 2,4,5-T
 R.T.: 8.988 min
 Delta R.T.: -0.022 min
 Response: 6754348
 Conc: 1.68 ng/ml



#13 2,4-DB

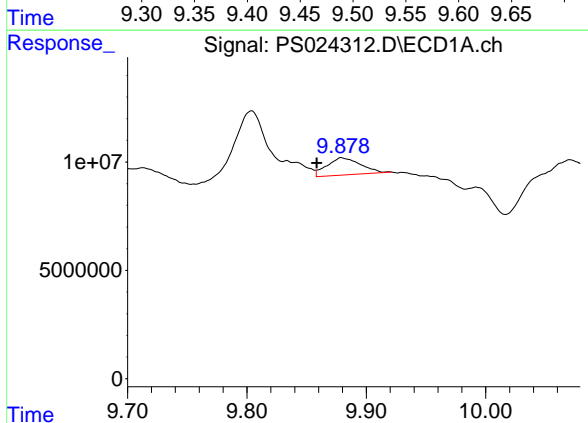
R.T.: 8.812 min
 Delta R.T.: 0.009 min
 Response: 104074160
 Conc: 48.28 ng/ml

Instrument :
 ECD_S
 ClientSampleId :



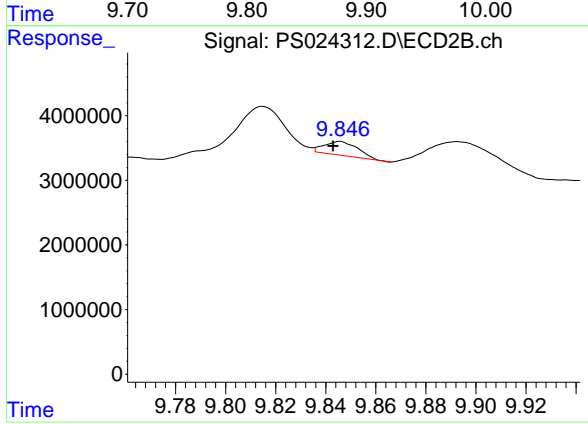
#13 2,4-DB

R.T.: 9.507 min
 Delta R.T.: -0.008 min
 Response: 18170892
 Conc: 39.53 ng/ml



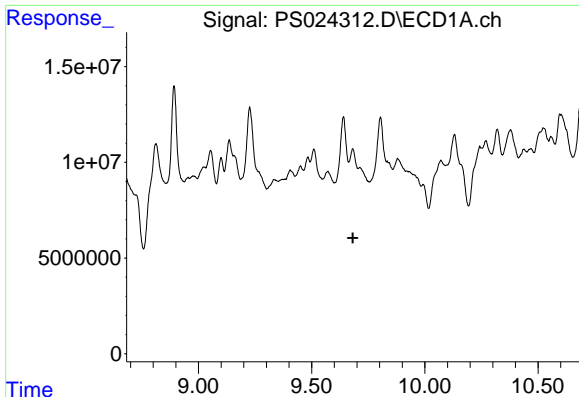
#14 DINOSEB

R.T.: 9.880 min
 Delta R.T.: 0.022 min
 Response: 13171985
 Conc: 1.36 ng/ml



#14 DINOSEB

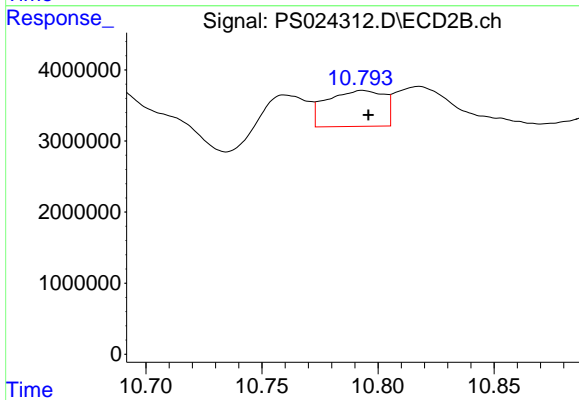
R.T.: 9.845 min
 Delta R.T.: 0.003 min
 Response: 1984991
 Conc: N.D.



#15 Picloram

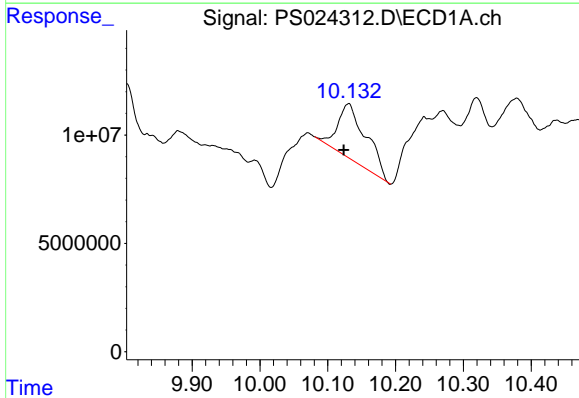
R.T.: 9.681 min
 Delta R.T.: 0.000 min
 Response: -16282979
 Conc: N.D.

Instrument :
 ECD_S
 ClientSampleId :



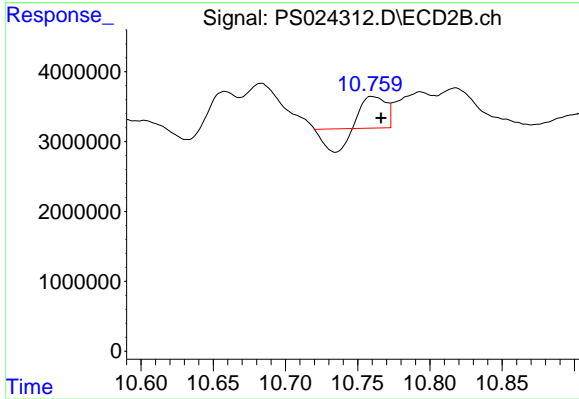
#15 Picloram

R.T.: 10.794 min
 Delta R.T.: -0.002 min
 Response: 8657211
 Conc: 1.46 ng/ml



#16 DCPA

R.T.: 10.130 min
 Delta R.T.: 0.007 min
 Response: 73609595
 Conc: 4.55 ng/ml



#16 DCPA

R.T.: 10.761 min
 Delta R.T.: -0.005 min
 Response: 2186991
 Conc: N.D.