

Data Path : Z:\pestpcbsrv\HPCHEM1\ECD\_S\Data\PS091423\  
 Data File : PS024313.D  
 Signal(s) : Signal #1: ECD1A.ch Signal #2: ECD2B.ch  
 Acq On : 14 Sep 2023 23:20  
 Operator : AR\AJ  
 Sample : 04407-01  
 Misc :  
 ALS Vial : 13 Sample Multiplier: 1

Instrument :  
 ECD\_S  
 ClientSampleId :

Integration File signal 1: autoint1.e  
 Integration File signal 2: autoint2.e  
 Quant Time: Sep 15 02:10:08 2023  
 Quant Method : Z:\pestpcbsrv\HPCHEM1\ECD\_S\Method\PS082823.M  
 Quant Title : 8080.M  
 QLast Update : Mon Aug 28 16:48:10 2023  
 Response via : Initial Calibration  
 Integrator: ChemStation

Volume Inj. : 2 µl  
 Signal #1 Phase : Rtx-CLPesticides Signal #2 Phase: Rtx-CLPesticides2  
 Signal #1 Info : 30M x 0.32mm x0.5 Signal #2 Info : 30M x 0.32mm x 0.25µm

|                             | Compound     | RT#1   | RT#2   | Resp#1   | Resp#2   | ng/ml   | ng/ml     |
|-----------------------------|--------------|--------|--------|----------|----------|---------|-----------|
| -----                       |              |        |        |          |          |         |           |
| System Monitoring Compounds |              |        |        |          |          |         |           |
| 4) S                        | 2,4-DCAA     | 6.361  | 6.788  | 784.0E6  | 276.1E6  | 393.517 | 411.181   |
| Target Compounds            |              |        |        |          |          |         |           |
| 2) T                        | 3,5-DICHL... | 5.739  | 5.986  | 10217524 | 9463415  | 3.361   | 9.076 #   |
| 3) T                        | 4-Nitroph... | 6.220  | 6.419  | 18204072 | -1181348 | 14.653  | N.D. #    |
| 5) T                        | DICAMBA      | 6.522  | 6.985  | 36537212 | -2154688 | 4.191   | N.D. #    |
| 6) T                        | MCPD         | 6.678  | 7.096  | 99117566 | 1733594  | 15.917  | <MDL #    |
| 7) T                        | MCPA         | 6.793  | 7.262  | 60754456 | 20909202 | 7.000   | 7.153     |
| 8) T                        | DICHLORPROP  | 7.125  | 7.576  | 74974796 | 49823464 | 32.980  | 68.574 #  |
| 9) T                        | 2,4-D        | 7.281  | 7.856  | 39774205 | 5410973  | 14.953  | 6.074 #   |
| 10) T                       | Pentachlo... | 7.521  | 8.326f | 365.5E6  | -5239997 | 11.688  | N.D. #    |
| 11) T                       | 2,4,5-TP ... | 8.030  | 8.636  | 13400747 | -66265   | 1.003   | N.D. #    |
| 12) T                       | 2,4,5-T      | 8.341f | 8.988  | 78314610 | 29015790 | 6.321   | 7.230     |
| 13) T                       | 2,4-DB       | 8.823  | 9.515  | 139.9E6  | 53562238 | 64.911  | 116.537 # |
| 14) T                       | DINOSEB      | 9.895  | 9.848  | 35959434 | 1822927  | 3.722   | <MDL #    |
| 15) T                       | Picloram     | 9.721  | 10.762 | 20058484 | 4504134  | 1.228   | <MDL #    |
| 16) T                       | DCPA         | 10.126 | 10.762 | 224.3E6  | 4504134  | 13.848  | <MDL #    |
| -----                       |              |        |        |          |          |         |           |

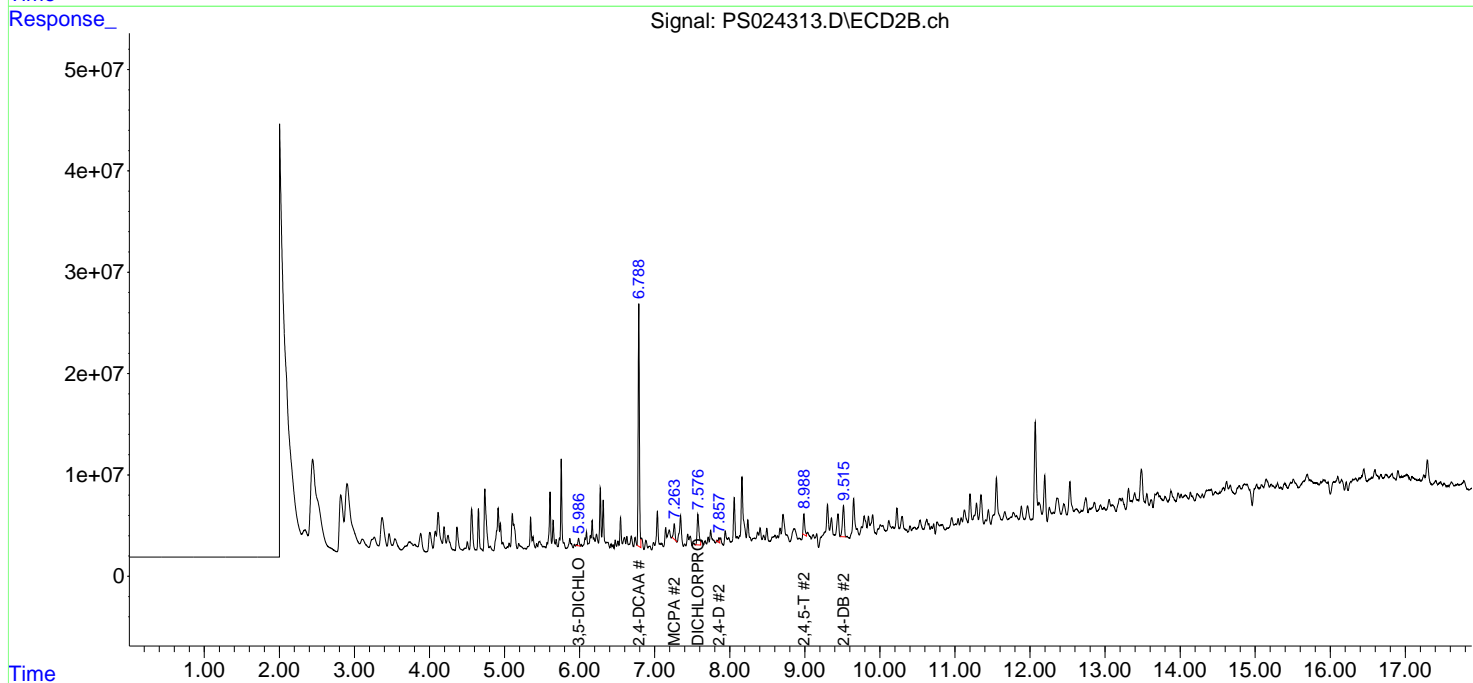
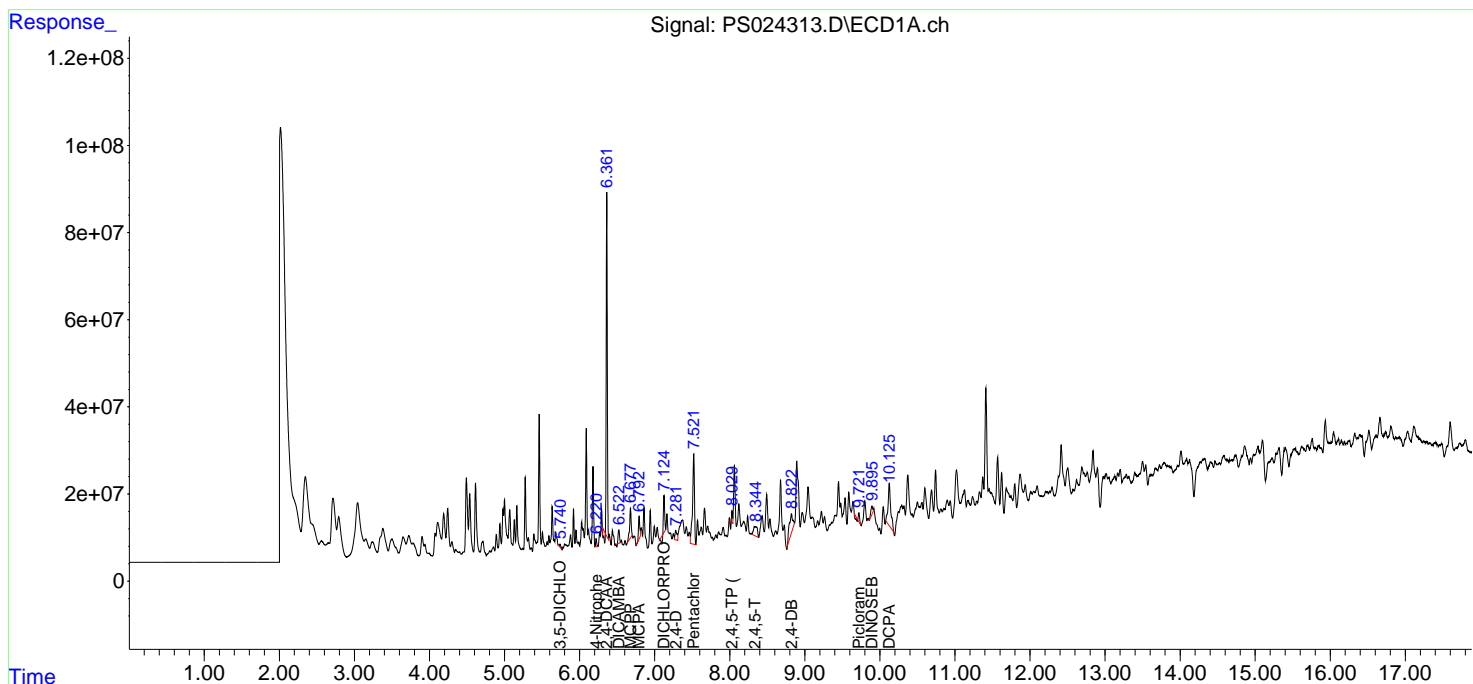
(f)=RT Delta > 1/2 Window (#)=Amounts differ by > 25% (m)=manual int.

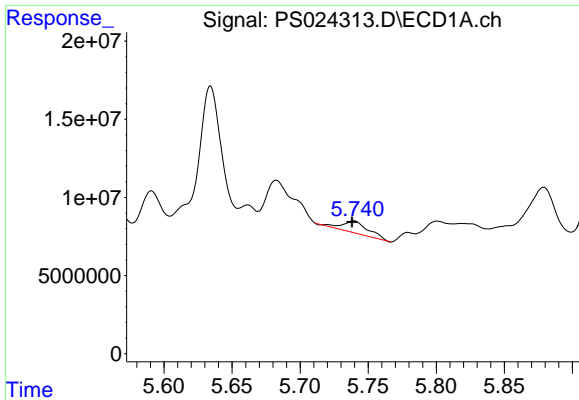
Data Path : Z:\pestpcbsrv\HPCHEM1\ECD\_S\Data\PS091423\  
 Data File : PS024313.D  
 Signal(s) : Signal #1: ECD1A.ch Signal #2: ECD2B.ch  
 Acq On : 14 Sep 2023 23:20  
 Operator : AR\AJ  
 Sample : 04407-01  
 Misc :  
 ALS Vial : 13 Sample Multiplier: 1

Instrument :  
 ECD\_S  
 ClientSampleId :

Integration File signal 1: autoint1.e  
 Integration File signal 2: autoint2.e  
 Quant Time: Sep 15 02:10:08 2023  
 Quant Method : Z:\pestpcbsrv\HPCHEM1\ECD\_S\Method\PS082823.M  
 Quant Title : 8080.M  
 QLast Update : Mon Aug 28 16:48:10 2023  
 Response via : Initial Calibration  
 Integrator: ChemStation

Volume Inj. : 2 µl  
 Signal #1 Phase : Rtx-CLPesticides Signal #2 Phase: Rtx-CLPesticides2  
 Signal #1 Info : 30M x 0.32mm x0.5 Signal #2 Info : 30M x 0.32mm x 0.25µm

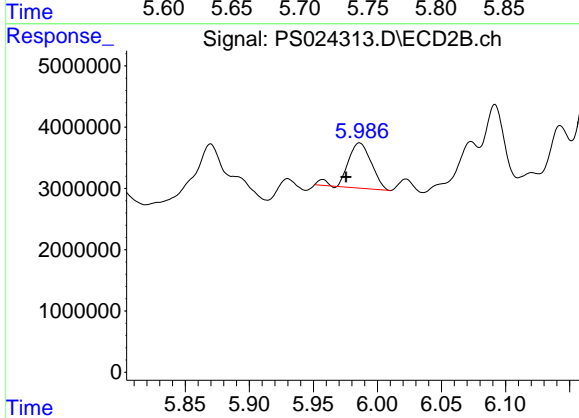




#2 3,5-DICHLORO BENZOIC ACID

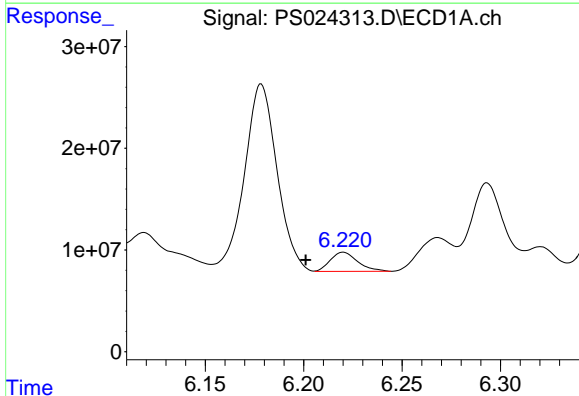
R.T.: 5.739 min  
 Delta R.T.: 0.000 min  
 Response: 10217524  
 Conc: 3.36 ng/ml

Instrument :  
 ECD\_S  
 ClientSampleId :



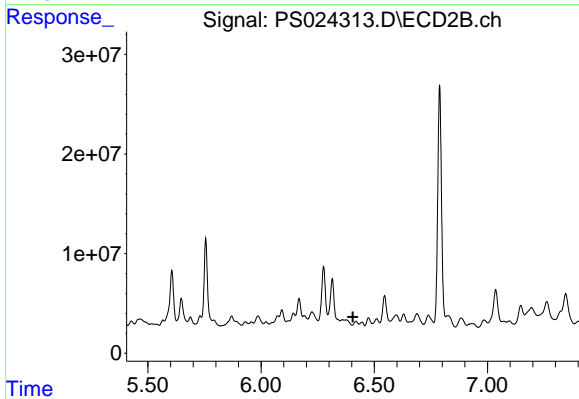
#2 3,5-DICHLORO BENZOIC ACID

R.T.: 5.986 min  
 Delta R.T.: 0.010 min  
 Response: 9463415  
 Conc: 9.08 ng/ml



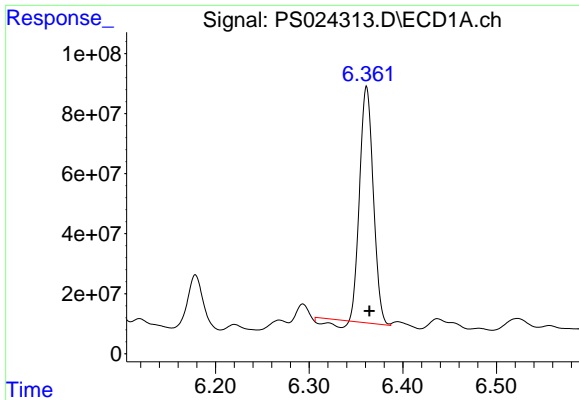
#3 4-Nitrophenol

R.T.: 6.220 min  
 Delta R.T.: 0.019 min  
 Response: 18204072  
 Conc: 14.65 ng/ml



#3 4-Nitrophenol

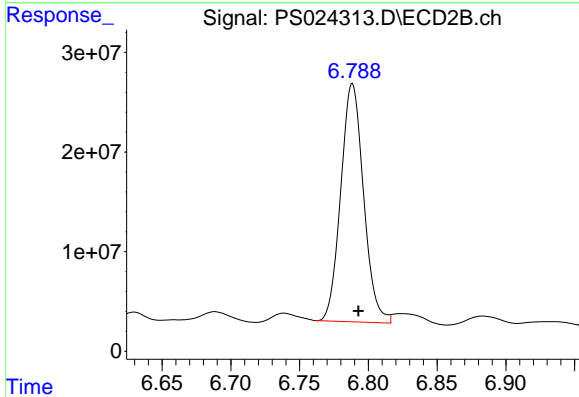
R.T.: 6.419 min  
 Delta R.T.: 0.013 min  
 Response: -1181348  
 Conc: N.D.



#4 2,4-DCAA

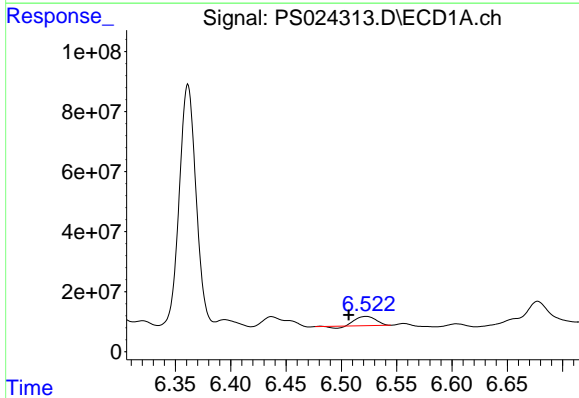
R.T.: 6.361 min  
 Delta R.T.: -0.003 min  
 Response: 784012664  
 Conc: 393.52 ng/ml

Instrument :  
 ECD\_S  
 ClientSampleId :



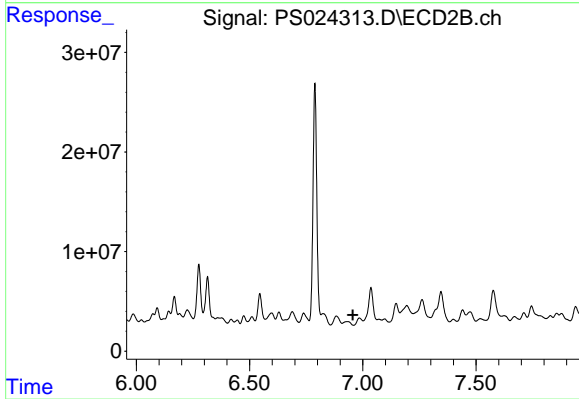
#4 2,4-DCAA

R.T.: 6.788 min  
 Delta R.T.: -0.004 min  
 Response: 276145508  
 Conc: 411.18 ng/ml



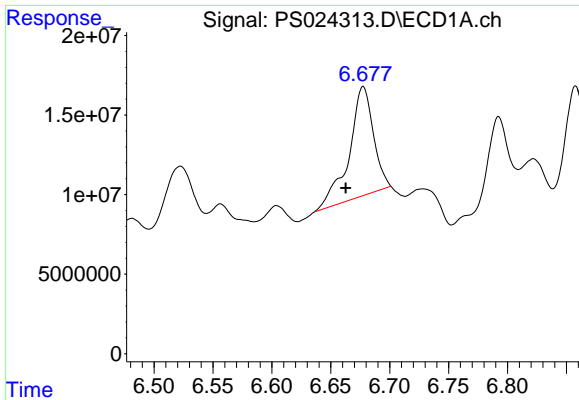
#5 DICAMBA

R.T.: 6.522 min  
 Delta R.T.: 0.016 min  
 Response: 36537212  
 Conc: 4.19 ng/ml



#5 DICAMBA

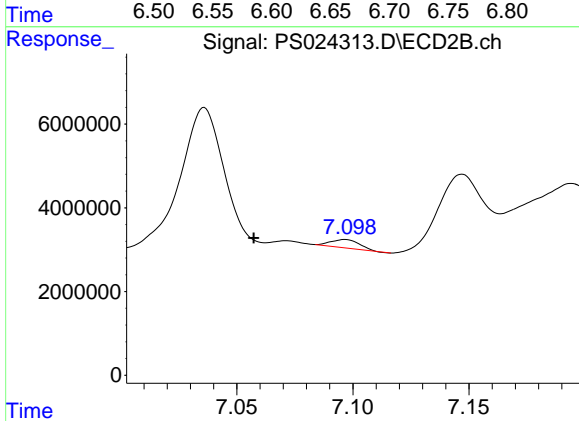
R.T.: 6.985 min  
 Delta R.T.: 0.029 min  
 Response: -2154688  
 Conc: N.D.



#6 MCPP

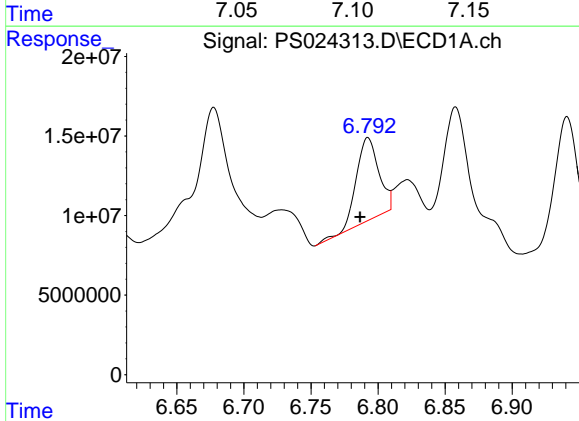
R.T.: 6.678 min  
 Delta R.T.: 0.015 min  
 Response: 99117566  
 Conc: 15.92 ug/ml

Instrument :  
 ECD\_S  
 ClientSampleId :



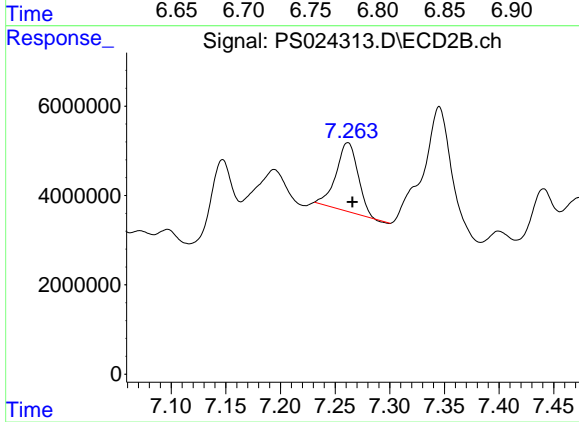
#6 MCPP

R.T.: 7.096 min  
 Delta R.T.: 0.039 min  
 Response: 1733594  
 Conc: N.D.



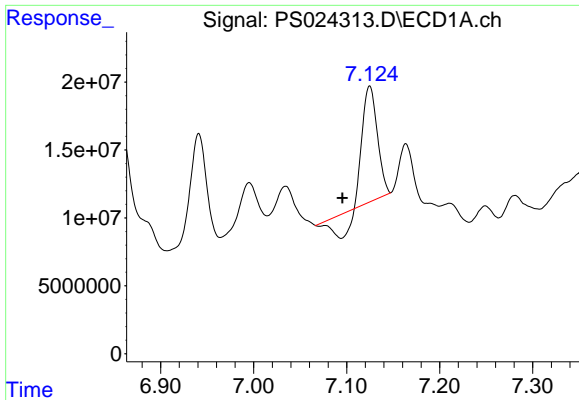
#7 MCPA

R.T.: 6.793 min  
 Delta R.T.: 0.006 min  
 Response: 60754456  
 Conc: 7.00 ug/ml



#7 MCPA

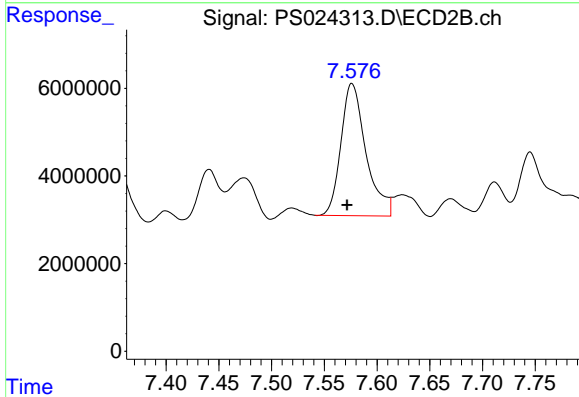
R.T.: 7.262 min  
 Delta R.T.: -0.004 min  
 Response: 20909202  
 Conc: 7.15 ug/ml



#8 DICHLORPROP

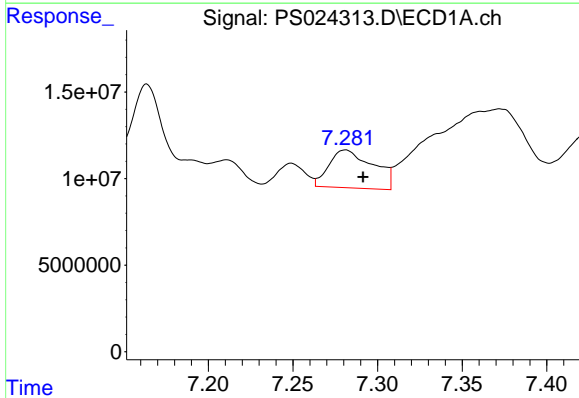
R.T.: 7.125 min  
 Delta R.T.: 0.029 min  
 Response: 74974796  
 Conc: 32.98 ng/ml

Instrument :  
 ECD\_S  
 ClientSampleId :



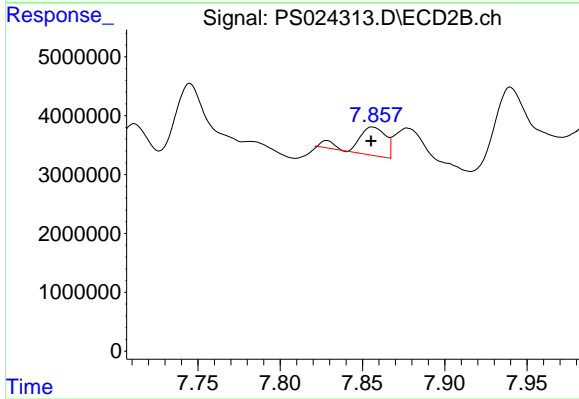
#8 DICHLORPROP

R.T.: 7.576 min  
 Delta R.T.: 0.005 min  
 Response: 49823464  
 Conc: 68.57 ng/ml



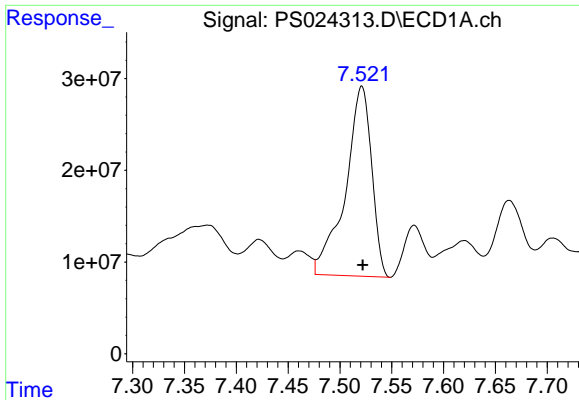
#9 2,4-D

R.T.: 7.281 min  
 Delta R.T.: -0.010 min  
 Response: 39774205  
 Conc: 14.95 ng/ml



#9 2,4-D

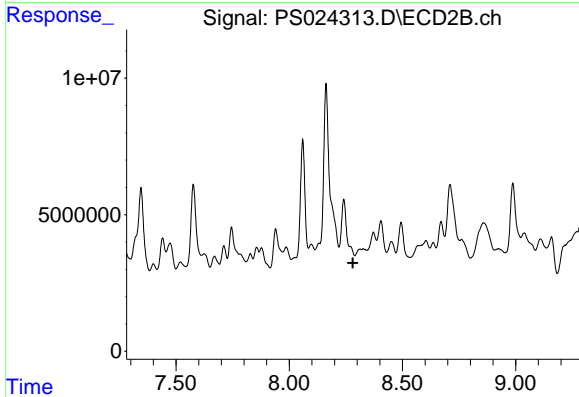
R.T.: 7.856 min  
 Delta R.T.: 0.001 min  
 Response: 5410973  
 Conc: 6.07 ng/ml



#10 Pentachlorophenol

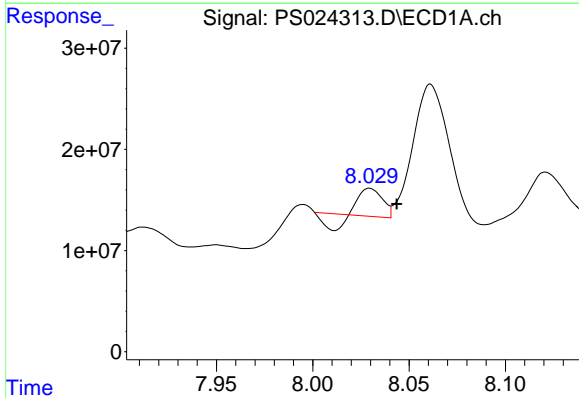
R.T.: 7.521 min  
 Delta R.T.: -0.001 min  
 Response: 365513587  
 Conc: 11.69 ng/ml

Instrument :  
 ECD\_S  
 ClientSampleId :



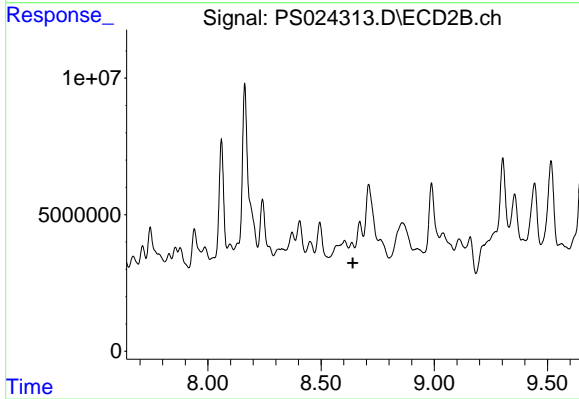
#10 Pentachlorophenol

R.T.: 8.326 min  
 Delta R.T.: 0.045 min  
 Response: -5239997  
 Conc: N.D.



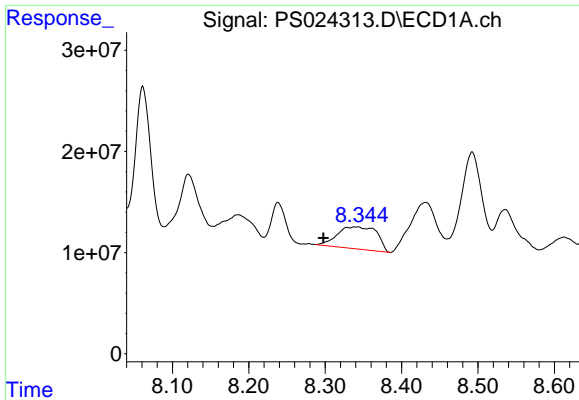
#11 2,4,5-TP (SILVEX)

R.T.: 8.030 min  
 Delta R.T.: -0.014 min  
 Response: 13400747  
 Conc: 1.00 ng/ml



#11 2,4,5-TP (SILVEX)

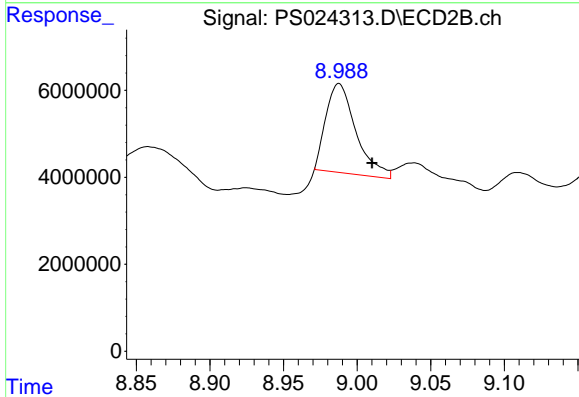
R.T.: 8.636 min  
 Delta R.T.: -0.004 min  
 Response: -66265  
 Conc: N.D.



#12 2,4,5-T

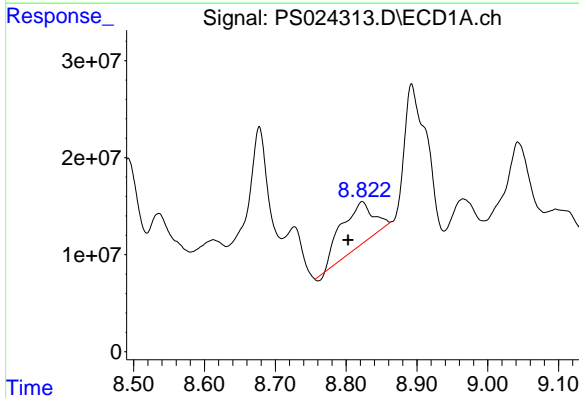
R.T.: 8.341 min  
 Delta R.T.: 0.043 min  
 Response: 78314610  
 Conc: 6.32 ng/ml

Instrument :  
 ECD\_S  
 ClientSampleId :



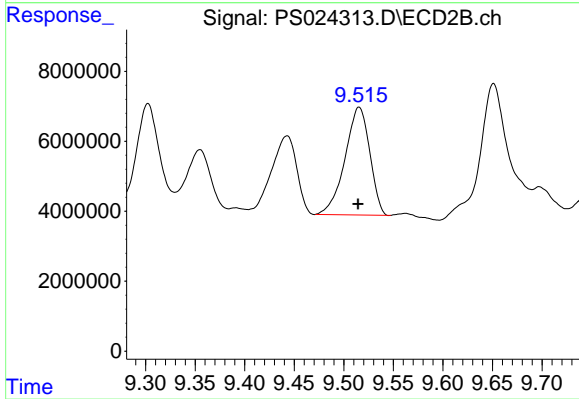
#12 2,4,5-T

R.T.: 8.988 min  
 Delta R.T.: -0.023 min  
 Response: 29015790  
 Conc: 7.23 ng/ml



#13 2,4-DB

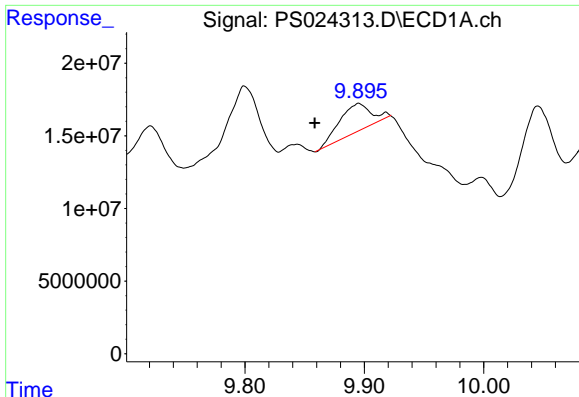
R.T.: 8.823 min  
 Delta R.T.: 0.020 min  
 Response: 139924891  
 Conc: 64.91 ng/ml



#13 2,4-DB

R.T.: 9.515 min  
 Delta R.T.: 0.001 min  
 Response: 53562238  
 Conc: 116.54 ng/ml

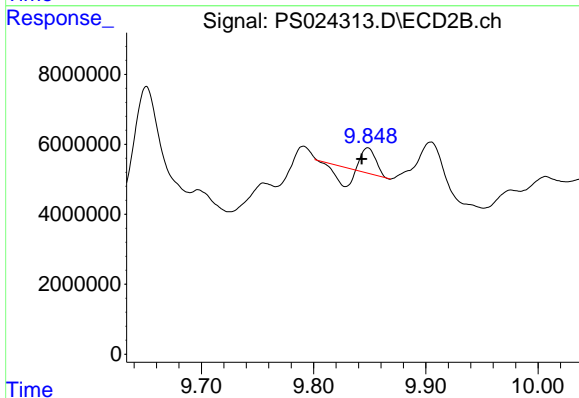




#14 DINOSEB

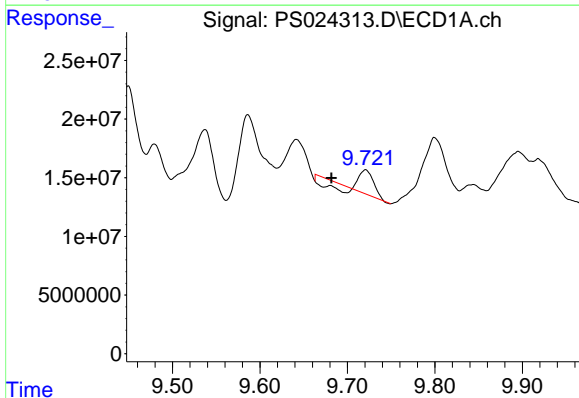
R.T.: 9.895 min  
 Delta R.T.: 0.037 min  
 Response: 35959434  
 Conc: 3.72 ng/ml

Instrument :  
 ECD\_S  
 ClientSampleId :



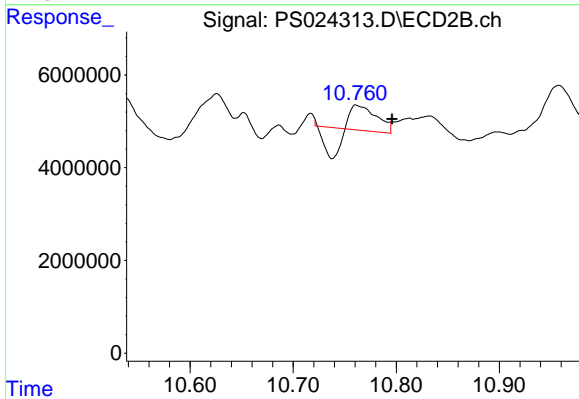
#14 DINOSEB

R.T.: 9.848 min  
 Delta R.T.: 0.005 min  
 Response: 1822927  
 Conc: N.D.



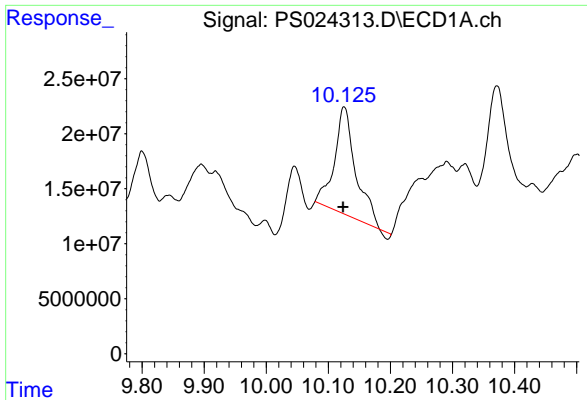
#15 Picloram

R.T.: 9.721 min  
 Delta R.T.: 0.039 min  
 Response: 20058484  
 Conc: 1.23 ng/ml



#15 Picloram

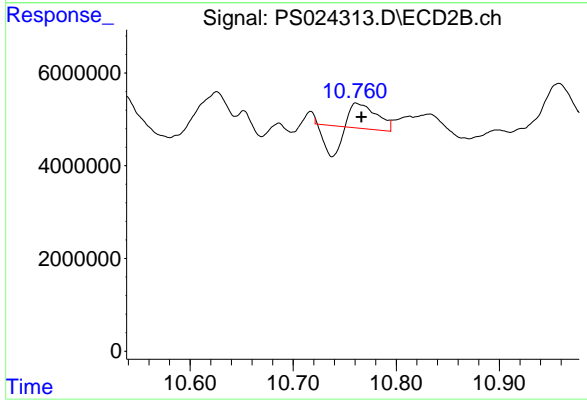
R.T.: 10.762 min  
 Delta R.T.: -0.033 min  
 Response: 4504134  
 Conc: N.D.



#16 DCPA

R.T.: 10.126 min  
 Delta R.T.: 0.002 min  
 Response: 224252022  
 Conc: 13.85 ng/ml

Instrument :  
 ECD\_S  
 ClientSampleId :



#16 DCPA

R.T.: 10.762 min  
 Delta R.T.: -0.004 min  
 Response: 4504134  
 Conc: N.D.