

Data Path : Z:\pestpcbsrv\HPCHEM1\ECD_S\Data\PS091718\
 Data File : PS001775.D
 Signal(s) : Signal #1: ECD1A.ch Signal #2: ECD2B.ch
 Acq On : 17 Sep 2018 23:07
 Operator : EI\SJ
 Sample : HSTDCCC750
 Misc :
 ALS Vial : 6 Sample Multiplier: 1

Instrument :
 ECD_S
 ClientSampleId :

Integration File signal 1: autoint1.e
 Integration File signal 2: autoint2.e
 Quant Time: Sep 18 07:11:22 2018
 Quant Method : Z:\pestpcbsrv\HPCHEM1\ECD_S\Method\PS091718.M
 Quant Title : 8080.M
 QLast Update : Tue Sep 18 03:01:16 2018
 Response via : Initial Calibration
 Integrator: ChemStation

Volume Inj. : 2 µl
 Signal #1 Phase : Rtx-CLPesticides Signal #2 Phase: Rtx-CLPesticides2
 Signal #1 Info : 30M x 0.32mm x0.5 Signal #2 Info : 30M x 0.32mm x 0.25µm

	Compound	RT#1	RT#2	Resp#1	Resp#2	ng/ml	ng/ml

System Monitoring Compounds							
4) S	2,4-DCAA	11.497	10.994	163.5E6	190.8E6	729.039	751.208
Target Compounds							
1) T	Dalapon	2.968	2.429	217.0E6	193.3E6	667.245	654.417
2) T	3,5-DICHL...	9.920	9.144	222.2E6	177.3E6	675.142	561.847
3) T	4-Nitroph...	11.088	10.139	95821288	75331141	680.788	600.734
5) T	DICAMBA	11.809	11.280	615.9E6	429.4E6	710.647	481.508 #
6) T	MCP P	12.149	11.507	46251922	44396065	72.582	75.343
7) T	MCPA	12.400	11.884	49367904	53014632	47.040	61.160 #
8) T	DICHLORPROP	12.998	12.404	160.4E6	66491936	691.009	286.265 #
9) T	2,4-D	13.357	12.876	198.9E6	155.0E6	721.677	498.304 #
10) T	Pentachlo...	13.738	13.426	2227.8E6	1903.7E6	724.890	555.448
11) T	2,4,5-TP ...	14.609	14.043	855.7E6	1003.1E6	723.315	731.576
12) T	2,4,5-T	15.007	14.574	864.8E6	490.4E6	724.462	444.110 #
13) T	2,4-DB	15.756	15.259	114.7E6	80528337	704.396	486.514 #
14) T	DINOSEB	17.243	15.689	333.5E6	389.5E6	400.058	410.942
15) T	Picloram	17.005	16.870	1270.7E6	1228.7E6	729.802	722.478
16) T	DCPA	17.585	16.924	1014.3E6	1359.2E6	689.291	736.937

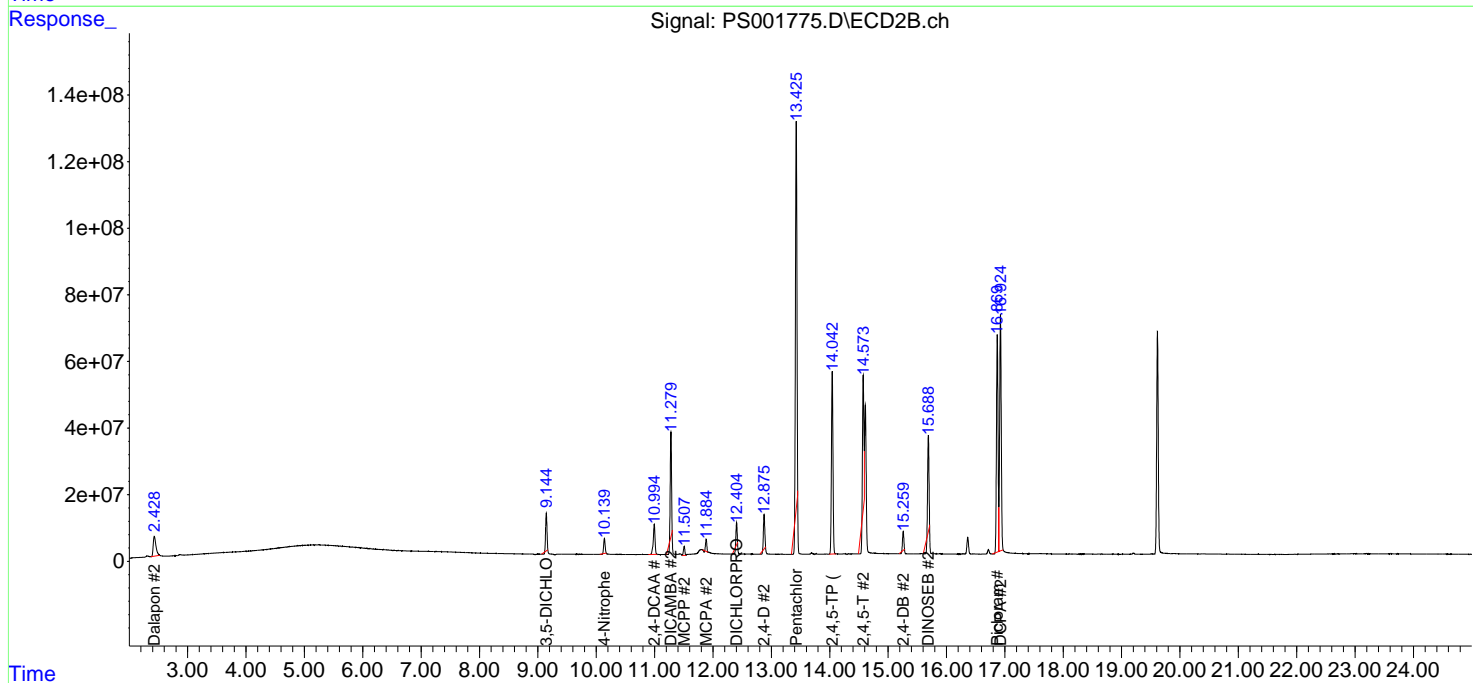
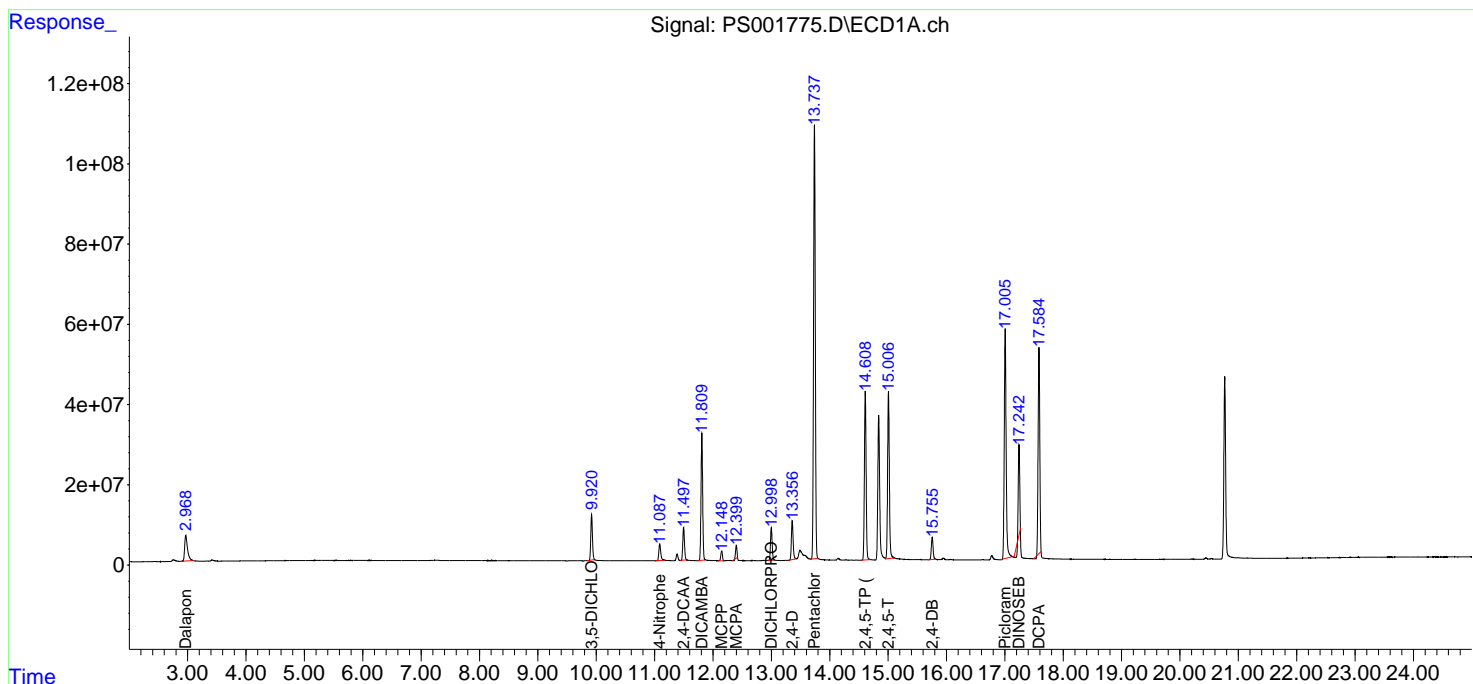
(f)=RT Delta > 1/2 Window (#)=Amounts differ by > 25% (m)=manual int.

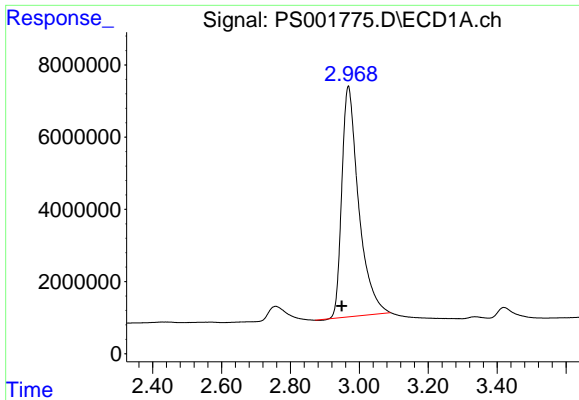
Data Path : Z:\pestpcbsrv\HPCHEM1\ECD_S\Data\PS091718\
 Data File : PS001775.D
 Signal(s) : Signal #1: ECD1A.ch Signal #2: ECD2B.ch
 Acq On : 17 Sep 2018 23:07
 Operator : EI\SJ
 Sample : HSTDCCC750
 Misc :
 ALS Vial : 6 Sample Multiplier: 1

Instrument :
 ECD_S
 ClientSampled :

Integration File signal 1: autoint1.e
 Integration File signal 2: autoint2.e
 Quant Time: Sep 18 07:11:22 2018
 Quant Method : Z:\pestpcbsrv\HPCHEM1\ECD_S\Method\PS091718.M
 Quant Title : 8080.M
 QLast Update : Tue Sep 18 03:01:16 2018
 Response via : Initial Calibration
 Integrator: ChemStation

Volume Inj. : 2 µl
 Signal #1 Phase : Rtx-CLPesticides Signal #2 Phase: Rtx-CLPesticides2
 Signal #1 Info : 30M x 0.32mm x0.5 Signal #2 Info : 30M x 0.32mm x 0.25µm

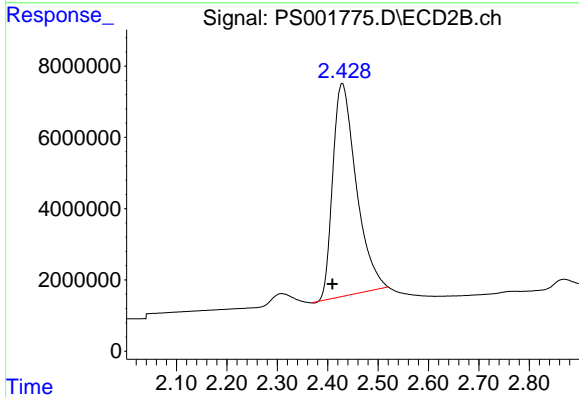




#1 Dalapon

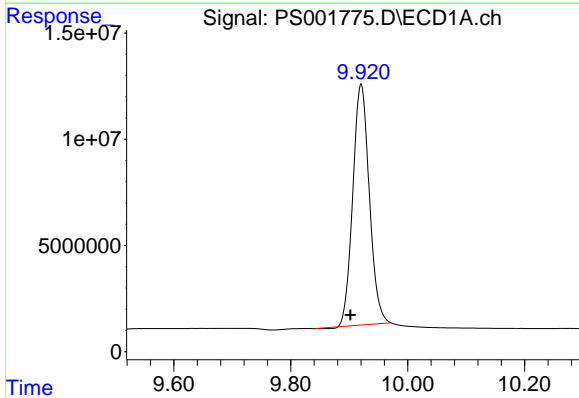
R.T.: 2.968 min
Delta R.T.: 0.019 min
Response: 216966271
Conc: 667.24 ng/ml

Instrument :
ECD_S
ClientSampled :



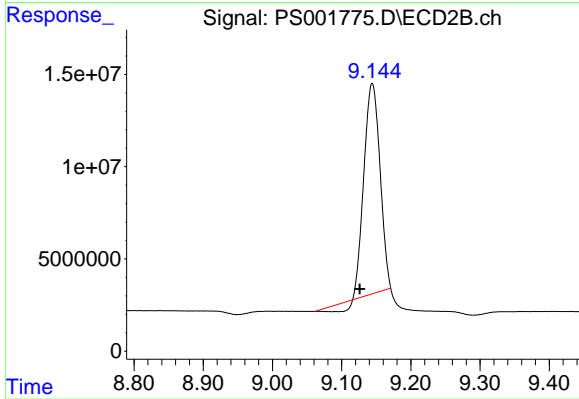
#1 Dalapon

R.T.: 2.429 min
Delta R.T.: 0.019 min
Response: 193326005
Conc: 654.42 ng/ml



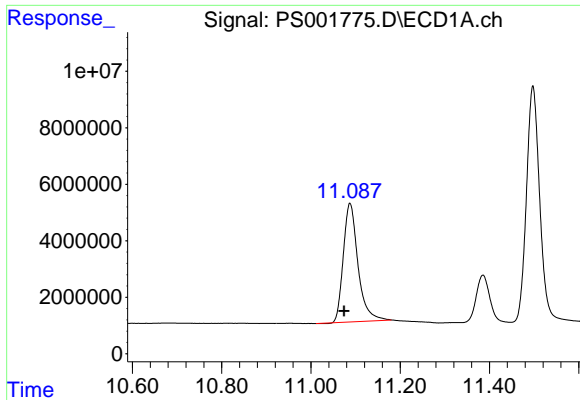
#2 3,5-DICHLOROBENZOIC ACID

R.T.: 9.920 min
Delta R.T.: 0.018 min
Response: 222211624
Conc: 675.14 ng/ml



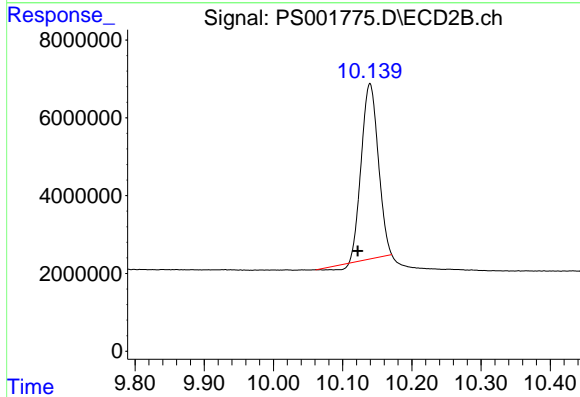
#2 3,5-DICHLOROBENZOIC ACID

R.T.: 9.144 min
Delta R.T.: 0.018 min
Response: 177337654
Conc: 561.85 ng/ml

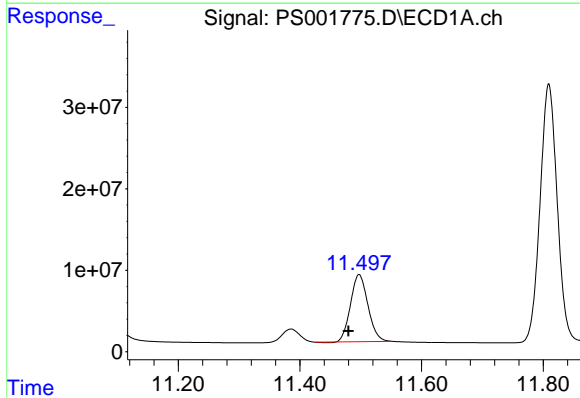


#3 4-Nitrophenol
 R.T.: 11.088 min
 Delta R.T.: 0.014 min
 Response: 95821288
 Conc: 680.79 ng/ml

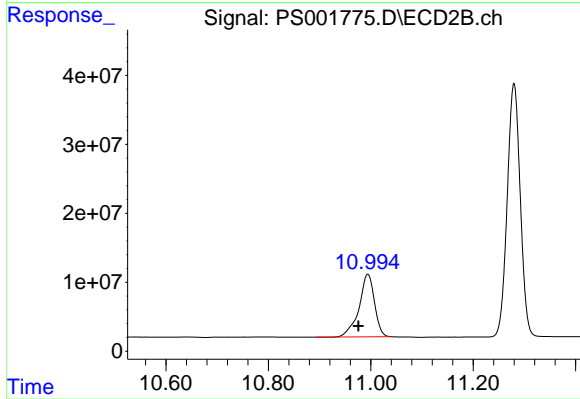
Instrument :
 ECD_S
 ClientSampleId :



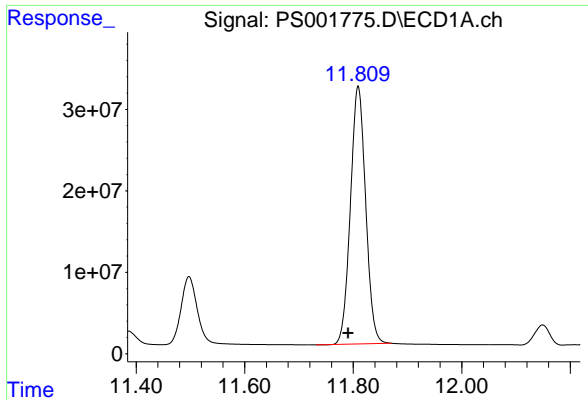
#3 4-Nitrophenol
 R.T.: 10.139 min
 Delta R.T.: 0.018 min
 Response: 75331141
 Conc: 600.73 ng/ml



#4 2,4-DCAA
 R.T.: 11.497 min
 Delta R.T.: 0.018 min
 Response: 163534870
 Conc: 729.04 ng/ml

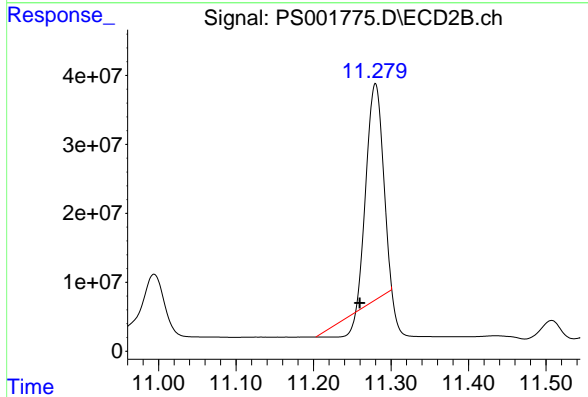


#4 2,4-DCAA
 R.T.: 10.994 min
 Delta R.T.: 0.018 min
 Response: 190819293
 Conc: 751.21 ng/ml

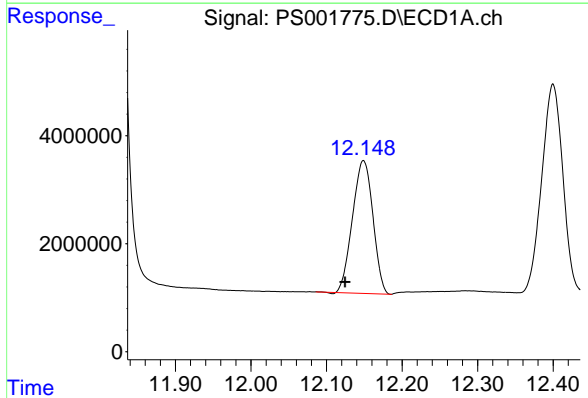


#5 DICAMBA
 R.T.: 11.809 min
 Delta R.T.: 0.019 min
 Response: 615926853
 Conc: 710.65 ng/ml

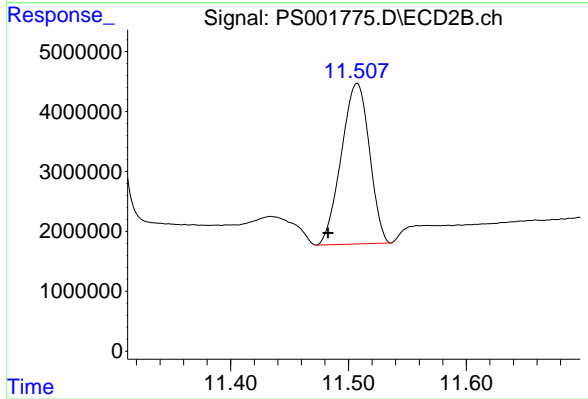
Instrument :
 ECD_S
 ClientSampleId :



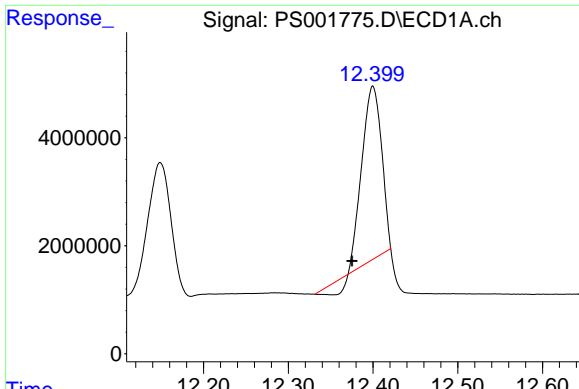
#5 DICAMBA
 R.T.: 11.280 min
 Delta R.T.: 0.020 min
 Response: 429447902
 Conc: 481.51 ng/ml



#6 MCPP
 R.T.: 12.149 min
 Delta R.T.: 0.024 min
 Response: 46251922
 Conc: 72.58 ug/ml

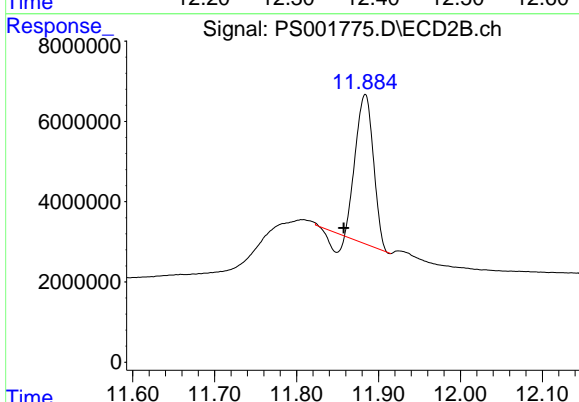


#6 MCPP
 R.T.: 11.507 min
 Delta R.T.: 0.025 min
 Response: 44396065
 Conc: 75.34 ug/ml

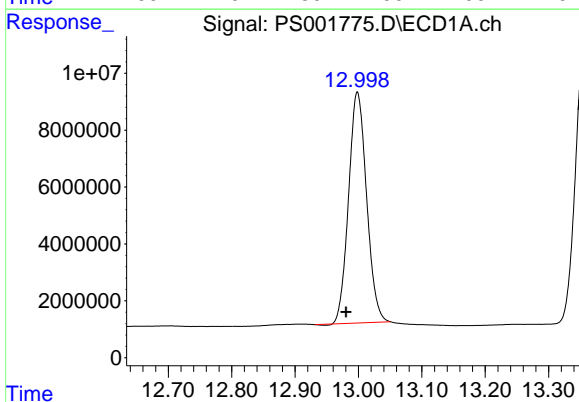


#7 MCPA
 R.T.: 12.400 min
 Delta R.T.: 0.024 min
 Response: 49367904
 Conc: 47.04 ug/ml

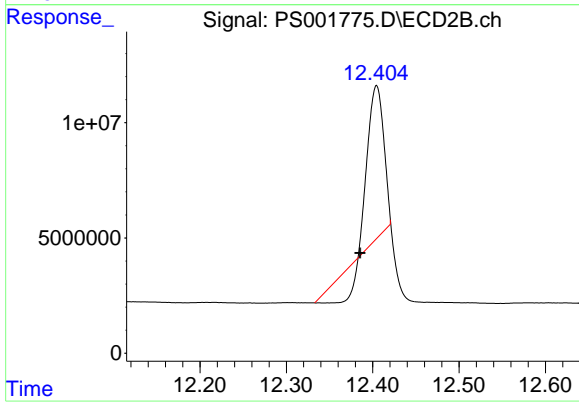
Instrument :
 ECD_S
 ClientSampled :



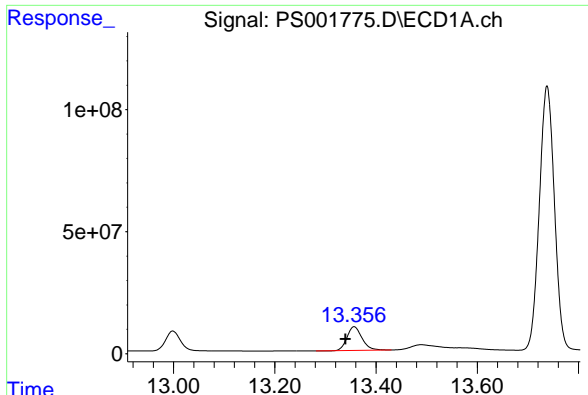
#7 MCPA
 R.T.: 11.884 min
 Delta R.T.: 0.026 min
 Response: 53014632
 Conc: 61.16 ug/ml



#8 DICHLORPROP
 R.T.: 12.998 min
 Delta R.T.: 0.018 min
 Response: 160359302
 Conc: 691.01 ng/ml



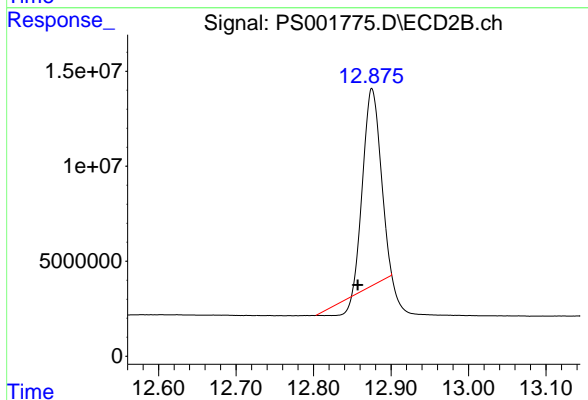
#8 DICHLORPROP
 R.T.: 12.404 min
 Delta R.T.: 0.019 min
 Response: 66491936
 Conc: 286.26 ng/ml



#9 2,4-D

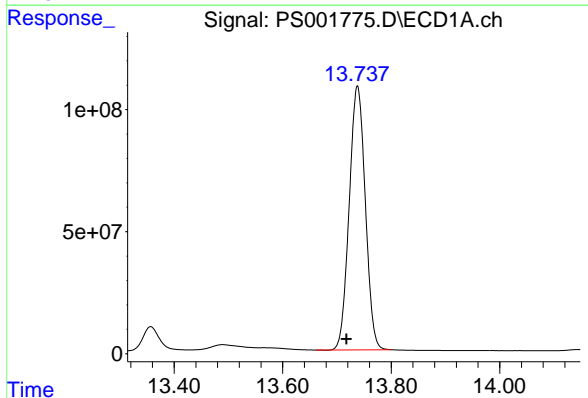
R.T.: 13.357 min
 Delta R.T.: 0.017 min
 Response: 198910550
 Conc: 721.68 ng/ml

Instrument :
 ECD_S
 ClientSampled :



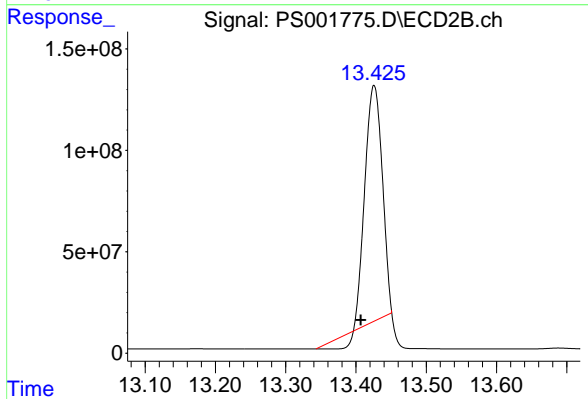
#9 2,4-D

R.T.: 12.876 min
 Delta R.T.: 0.019 min
 Response: 155025411
 Conc: 498.30 ng/ml



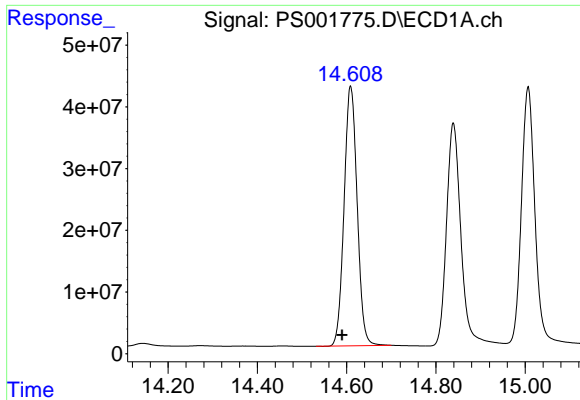
#10 Pentachlorophenol

R.T.: 13.738 min
 Delta R.T.: 0.020 min
 Response: 2227766280
 Conc: 724.89 ng/ml



#10 Pentachlorophenol

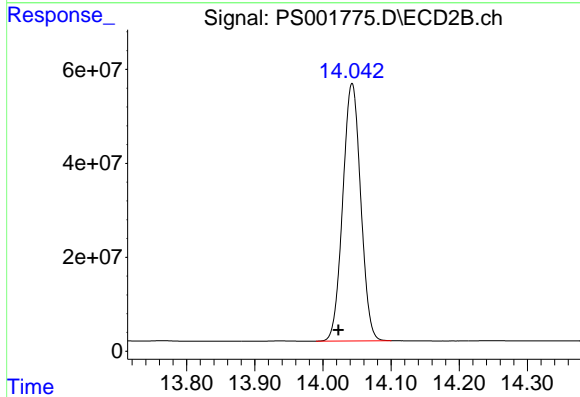
R.T.: 13.426 min
 Delta R.T.: 0.019 min
 Response: 1903724389
 Conc: 555.45 ng/ml



#11 2,4,5-TP (SILVEX)

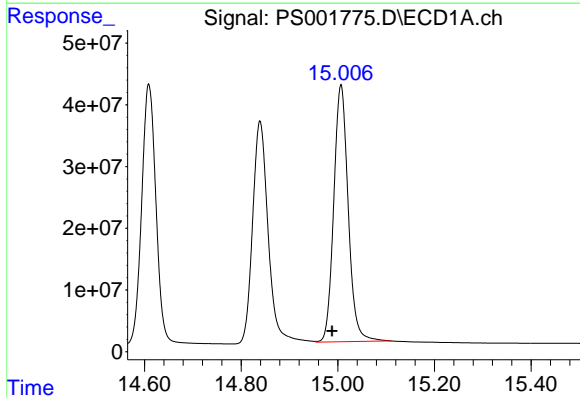
R.T.: 14.609 min
 Delta R.T.: 0.019 min
 Response: 855725830
 Conc: 723.31 ng/ml

Instrument :
 ECD_S
 ClientSampleId :



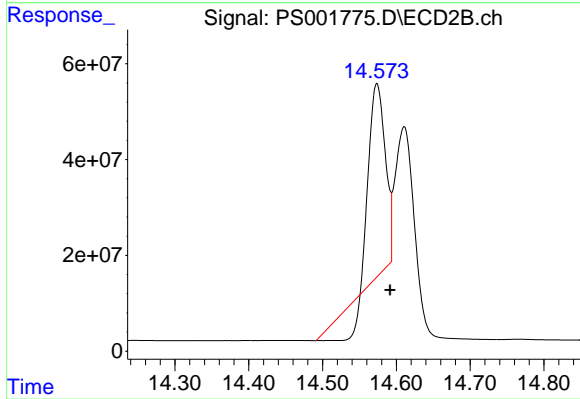
#11 2,4,5-TP (SILVEX)

R.T.: 14.043 min
 Delta R.T.: 0.020 min
 Response: 1003084282
 Conc: 731.58 ng/ml



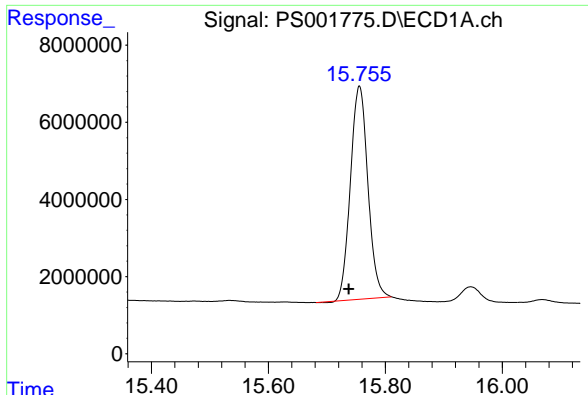
#12 2,4,5-T

R.T.: 15.007 min
 Delta R.T.: 0.018 min
 Response: 864839934
 Conc: 724.46 ng/ml



#12 2,4,5-T

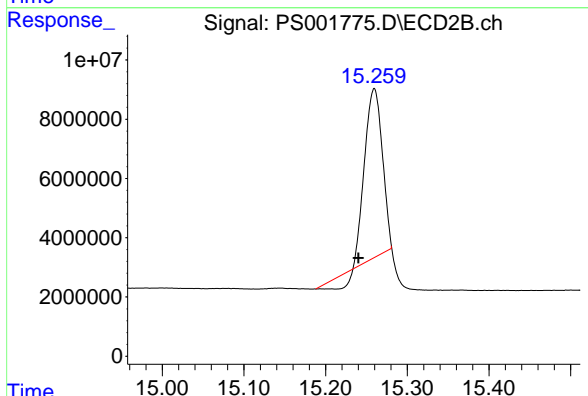
R.T.: 14.574 min
 Delta R.T.: -0.018 min
 Response: 490427794
 Conc: 444.11 ng/ml



#13 2,4-DB

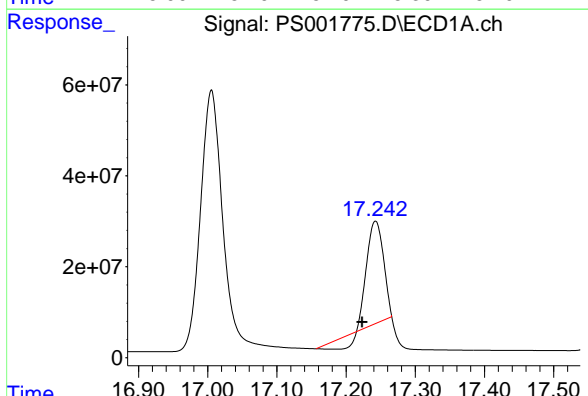
R.T.: 15.756 min
 Delta R.T.: 0.018 min
 Response: 114712840
 Conc: 704.40 ng/ml

Instrument :
 ECD_S
 ClientSampleId :



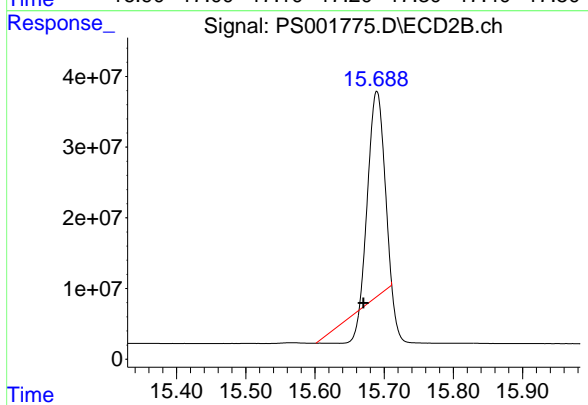
#13 2,4-DB

R.T.: 15.259 min
 Delta R.T.: 0.019 min
 Response: 80528337
 Conc: 486.51 ng/ml



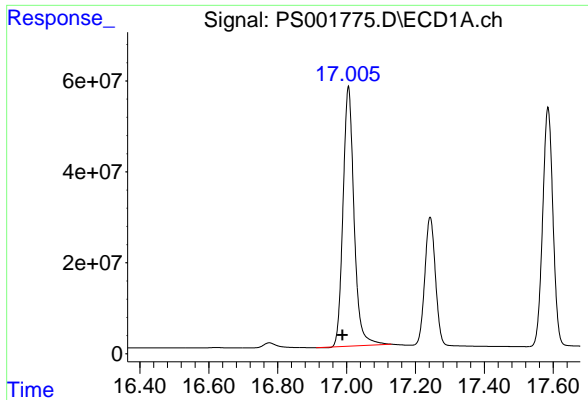
#14 DINOSEB

R.T.: 17.243 min
 Delta R.T.: 0.019 min
 Response: 333487920
 Conc: 400.06 ng/ml



#14 DINOSEB

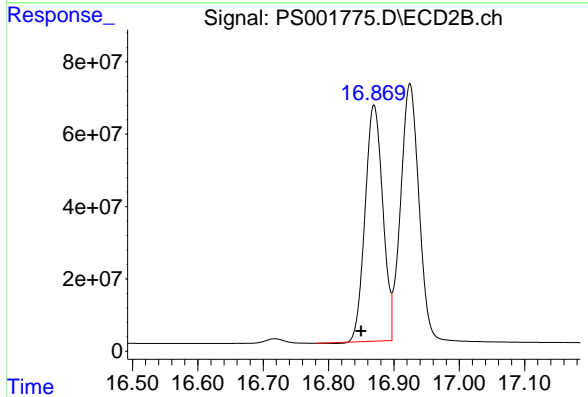
R.T.: 15.689 min
 Delta R.T.: 0.020 min
 Response: 389496786
 Conc: 410.94 ng/ml



#15 Picloram

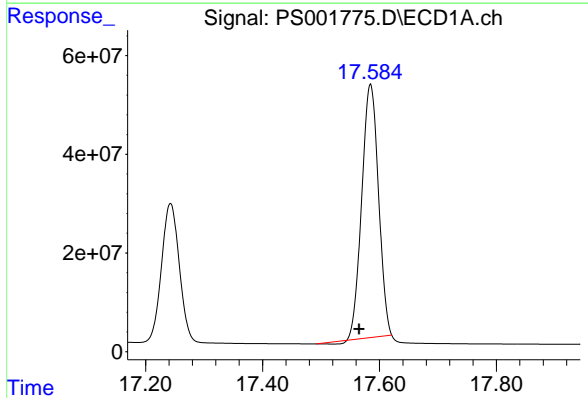
R.T.: 17.005 min
 Delta R.T.: 0.017 min
 Response: 1270732956
 Conc: 729.80 ng/ml

Instrument :
 ECD_S
 ClientSampleId :



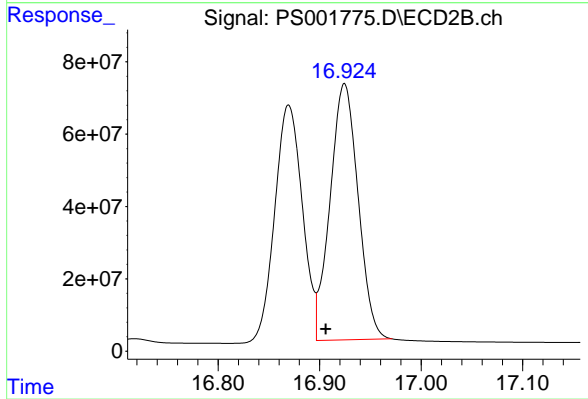
#15 Picloram

R.T.: 16.870 min
 Delta R.T.: 0.019 min
 Response: 1228748001
 Conc: 722.48 ng/ml



#16 DCPA

R.T.: 17.585 min
 Delta R.T.: 0.019 min
 Response: 1014295199
 Conc: 689.29 ng/ml



#16 DCPA

R.T.: 16.924 min
 Delta R.T.: 0.018 min
 Response: 1359226683
 Conc: 736.94 ng/ml