

Data Path : Z:\pestpcbsrv\HPCHEM1\ECD_S\Data\PS091719\
 Data File : PS006801.D
 Signal(s) : Signal #1: ECD1A.ch Signal #2: ECD2B.ch
 Acq On : 17 Sep 2019 20:46
 Operator : SM\AJ
 Sample : I.BLK
 Misc :
 ALS Vial : 2 Sample Multiplier: 1

Instrument :
 ECD_S
 ClientSampleId :
 I.BLK

Integration File signal 1: autoint1.e
 Integration File signal 2: autoint2.e
 Quant Time: Sep 18 06:59:33 2019
 Quant Method : Z:\pestpcbsrv\HPCHEM1\ECD_S\Method\PS090919.M
 Quant Title : 8080.M
 QLast Update : Tue Sep 10 06:14:42 2019
 Response via : Initial Calibration
 Integrator: ChemStation

Volume Inj. : 2 µl
 Signal #1 Phase : Rtx-CLPesticides Signal #2 Phase: Rtx-CLPesticides2
 Signal #1 Info : 30M x 0.32mm x0.5 Signal #2 Info : 30M x 0.32mm x 0.25µm

Compound	RT#1	RT#2	Resp#1	Resp#2	ng/ml	ng/ml

System Monitoring Compounds						
4) S 2,4-DCAA	5.510	5.240	371.8E6	197.2E6	478.562	461.824

Target Compounds

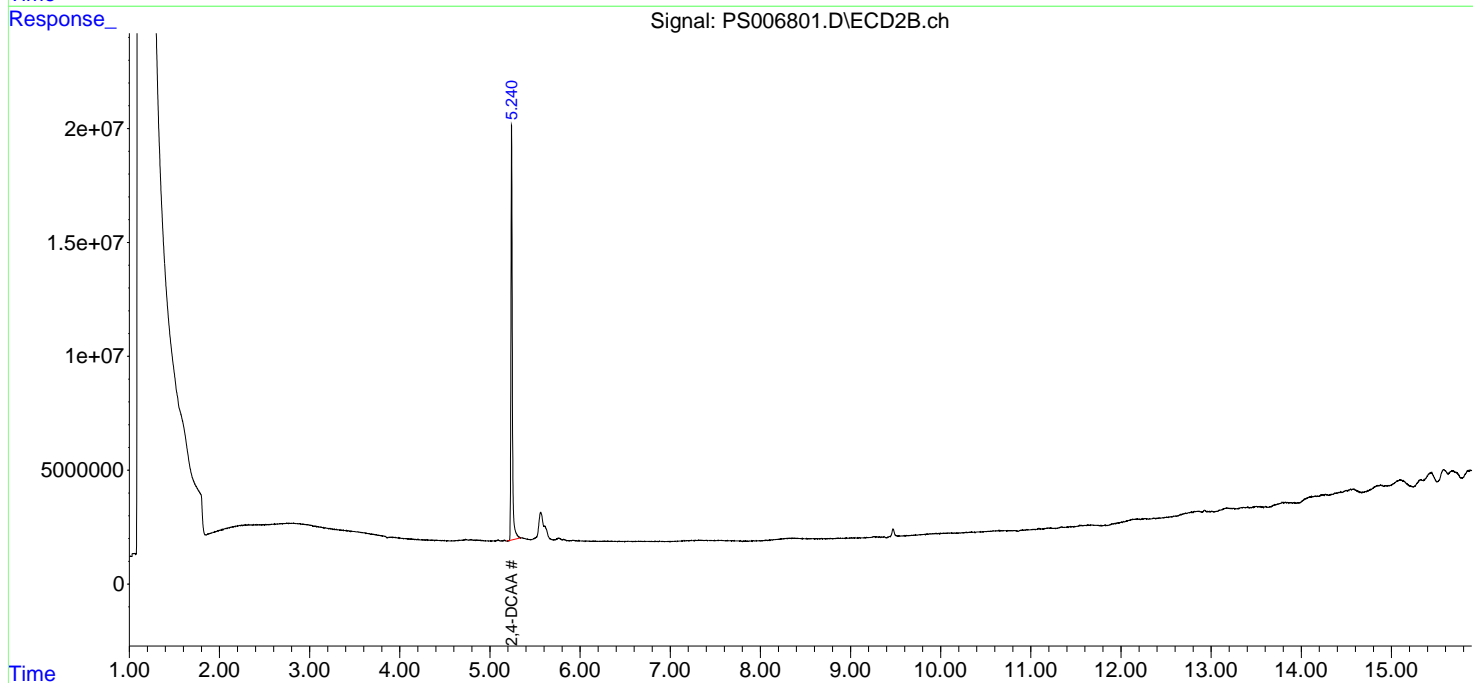
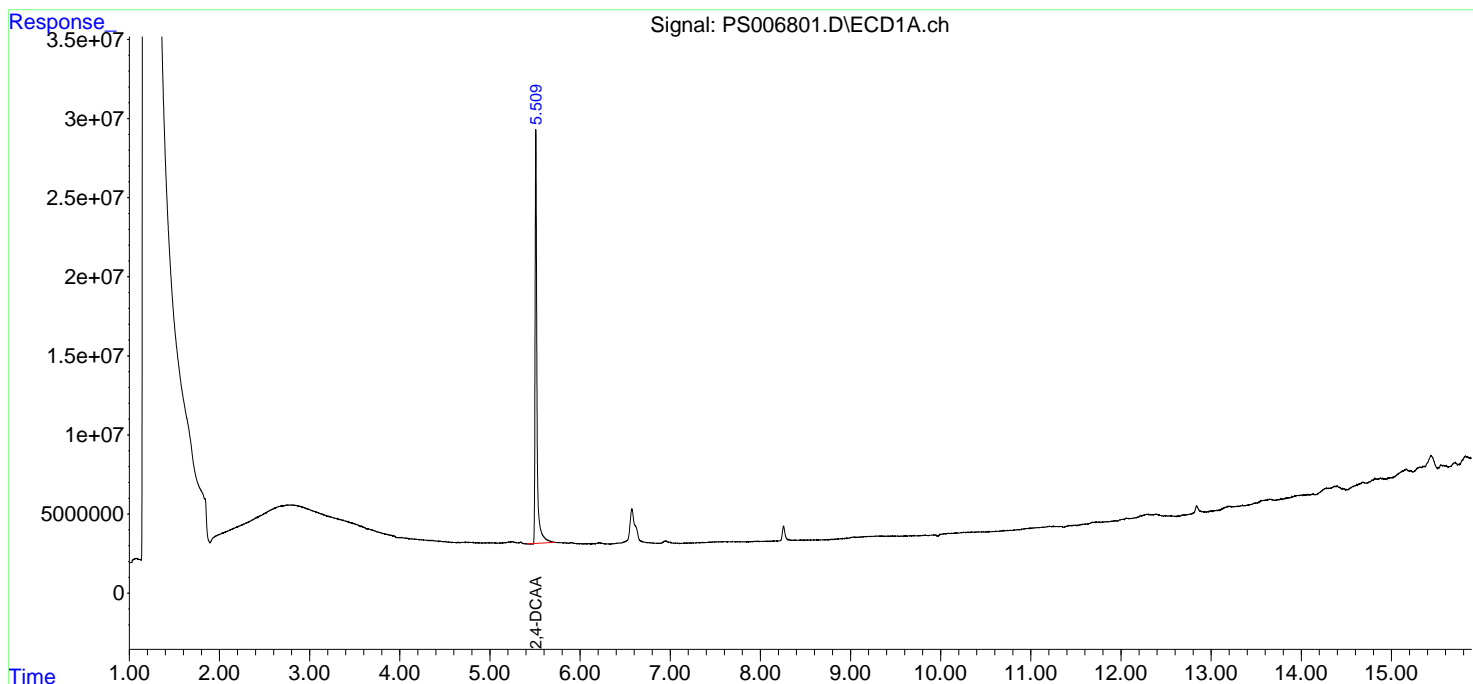
(f)=RT Delta > 1/2 Window (#)=Amounts differ by > 25% (m)=manual int.

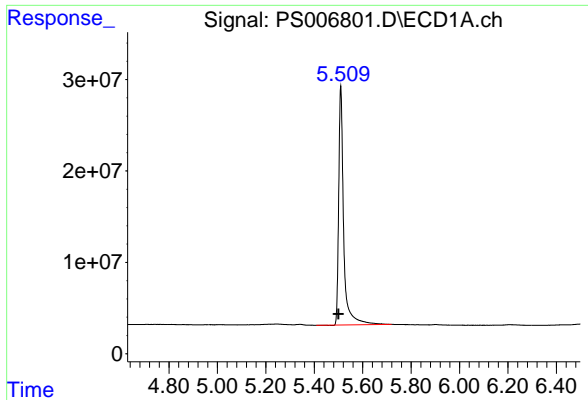
Data Path : Z:\pestpcbsrv\HPCHEM1\ECD_S\Data\PS091719\
 Data File : PS006801.D
 Signal(s) : Signal #1: ECD1A.ch Signal #2: ECD2B.ch
 Acq On : 17 Sep 2019 20:46
 Operator : SM\AJ
 Sample : I.BLK
 Misc :
 ALS Vial : 2 Sample Multiplier: 1

Instrument :
 ECD_S
 ClientSampleId :
 I.BLK

Integration File signal 1: autoint1.e
 Integration File signal 2: autoint2.e
 Quant Time: Sep 18 06:59:33 2019
 Quant Method : Z:\pestpcbsrv\HPCHEM1\ECD_S\Method\PS090919.M
 Quant Title : 8080.M
 QLast Update : Tue Sep 10 06:14:42 2019
 Response via : Initial Calibration
 Integrator: ChemStation

Volume Inj. : 2 µl
 Signal #1 Phase : Rtx-CLPesticides Signal #2 Phase: Rtx-CLPesticides2
 Signal #1 Info : 30M x 0.32mm x 0.5 Signal #2 Info : 30M x 0.32mm x 0.25µm

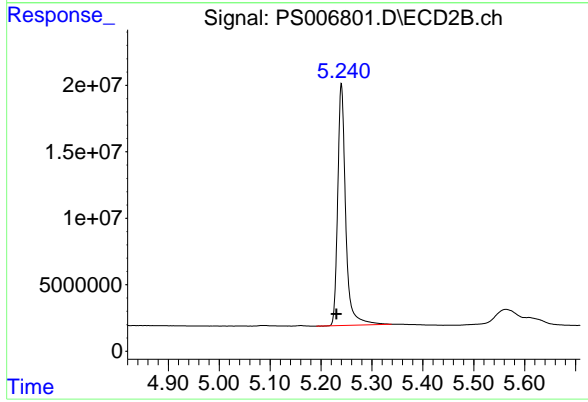




#4 2,4-DCAA

R.T.: 5.510 min
Delta R.T.: 0.009 min
Response: 371787970
Conc: 478.56 ng/ml

Instrument :
ECD_S
ClientSampleId :
I.BLK



#4 2,4-DCAA

R.T.: 5.240 min
Delta R.T.: 0.010 min
Response: 197199945
Conc: 461.82 ng/ml