

Data Path : Z:\pestpcbsrv\HPCHEM1\ECD\_S\Data\PS092022\  
 Data File : PS020617.D  
 Signal(s) : Signal #1: ECD1A.ch Signal #2: ECD2B.ch  
 Acq On : 20 Sep 2022 10:41  
 Operator : AJ\MA  
 Sample : HSTDCCC750  
 Misc :  
 ALS Vial : 3 Sample Multiplier: 1

Instrument :  
 ECD\_S  
 ClientSampleId :  
 HSTDCCC750

Integration File signal 1: autoint1.e  
 Integration File signal 2: autoint2.e  
 Quant Time: Sep 20 12:11:13 2022  
 Quant Method : Z:\pestpcbsrv\HPCHEM1\ECD\_S\Method\PS091322.M  
 Quant Title : 8080.M  
 QLast Update : Wed Sep 14 02:51:16 2022  
 Response via : Initial Calibration  
 Integrator: ChemStation

Volume Inj. : 2 µl  
 Signal #1 Phase : Rtx-CLPesticides Signal #2 Phase: Rtx-CLPesticides2  
 Signal #1 Info : 30M x 0.32mm x0.5 Signal #2 Info : 30M x 0.32mm x 0.25µm

	Compound	RT#1	RT#2	Resp#1	Resp#2	ng/ml	ng/ml
-----							
System Monitoring Compounds							
4) S	2,4-DCAA	7.179	6.756	2759.8E6	668.5E6	801.929	784.847
Target Compounds							
1) T	Dalapon	3.004	2.515	3187.1E6	776.2E6	635.008	640.162
2) T	3,5-DICHL...	6.395	5.943	3668.0E6	984.3E6	735.580	721.321
3) T	4-Nitroph...	7.015	6.382	1162.2E6	338.0E6	731.414	717.206
5) T	DICAMBA	7.366	6.918	10288.3E6	2852.8E6	752.389	741.062
6) T	MCP P	7.535	7.014	809.3E6	223.3E6	77.720	77.337
7) T	MCPA	7.683	7.226	1128.6E6	295.4E6	76.095	68.426
8) T	DICHLORPROP	8.058	7.538	2589.0E6	736.9E6	718.045	730.356
9) T	2,4-D	8.291	7.831	3649.5E6	911.0E6	785.165	717.332
10) T	Pentachlo...	8.592	8.252	35720.9E6	10447.5E6	774.462	737.234
11) T	2,4,5-TP ...	9.143	8.614	14921.0E6	4364.3E6	729.986	737.352
12) T	2,4,5-T	9.429	8.992	15642.6E6	4153.4E6	706.360	762.170
13) T	2,4-DB	9.983	9.495	2735.6E6	535.3E6	753.331	748.320
14) T	DINOSEB	11.129	9.818	11343.5E6	3078.2E6	617.661	717.900
15) T	Picloram	10.960	10.800	22052.1E6	5757.8E6	732.794	714.993
16) T	DCPA	11.400	10.744	17873.1E6	5548.8E6	697.672	752.328
-----							

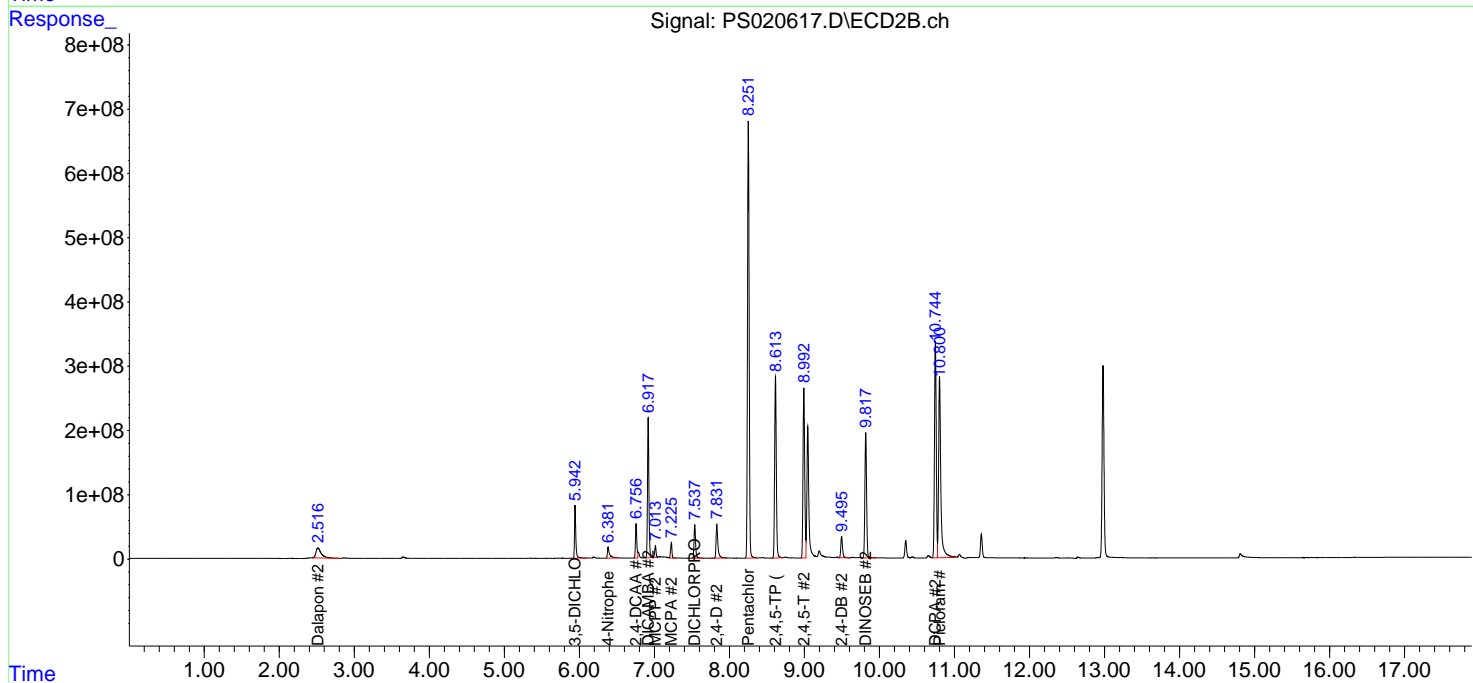
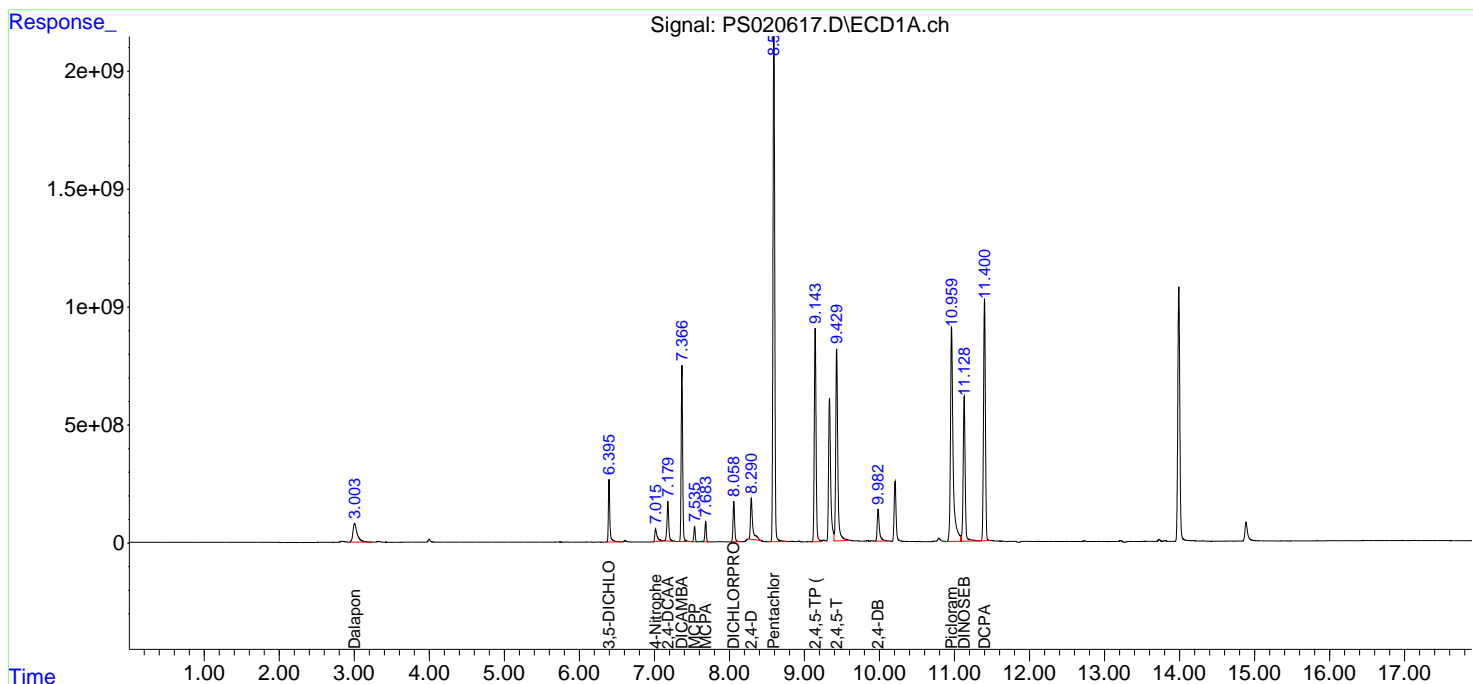
(f)=RT Delta > 1/2 Window (#)=Amounts differ by > 25% (m)=manual int.

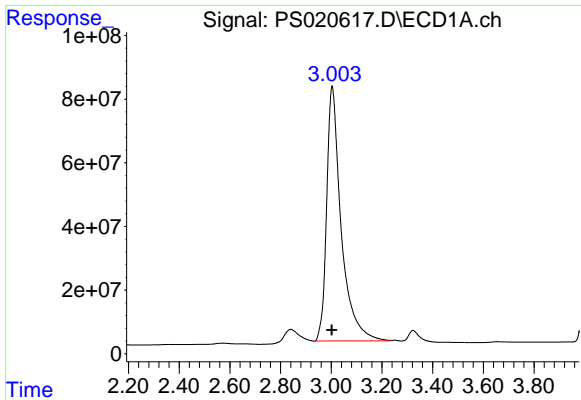
Data Path : Z:\pestpcbsrv\HPCHEM1\ECD\_S\Data\PS092022\  
 Data File : PS020617.D  
 Signal(s) : Signal #1: ECD1A.ch Signal #2: ECD2B.ch  
 Acq On : 20 Sep 2022 10:41  
 Operator : AJ\MA  
 Sample : HSTDCCC750  
 Misc :  
 ALS Vial : 3 Sample Multiplier: 1

Instrument :  
 ECD\_S  
 ClientSampleId :  
 HSTDCCC750

Integration File signal 1: autoint1.e  
 Integration File signal 2: autoint2.e  
 Quant Time: Sep 20 12:11:13 2022  
 Quant Method : Z:\pestpcbsrv\HPCHEM1\ECD\_S\Method\PS091322.M  
 Quant Title : 8080.M  
 QLast Update : Wed Sep 14 02:51:16 2022  
 Response via : Initial Calibration  
 Integrator: ChemStation

Volume Inj. : 2 µl  
 Signal #1 Phase : Rtx-CLPesticides Signal #2 Phase: Rtx-CLPesticides2  
 Signal #1 Info : 30M x 0.32mm x0.5 Signal #2 Info : 30M x 0.32mm x 0.25µm

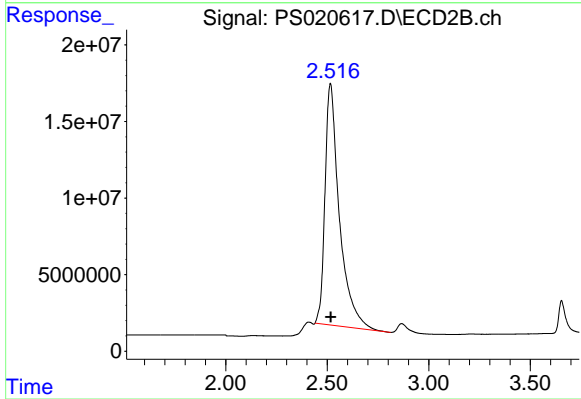




#1 Dalapon

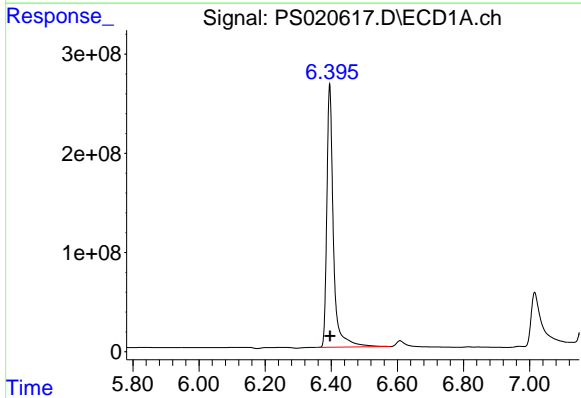
R.T.: 3.004 min  
 Delta R.T.: 0.002 min  
 Response: 3187137476  
 Conc: 635.01 ng/ml

Instrument :  
 ECD\_S  
 ClientSampleId :  
 HSTDCCC750



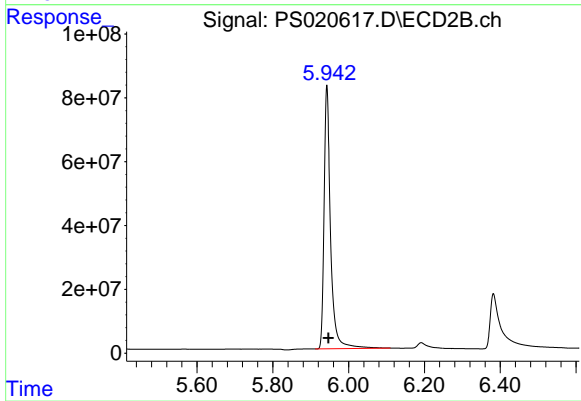
#1 Dalapon

R.T.: 2.515 min  
 Delta R.T.: -0.001 min  
 Response: 776211951  
 Conc: 640.16 ng/ml



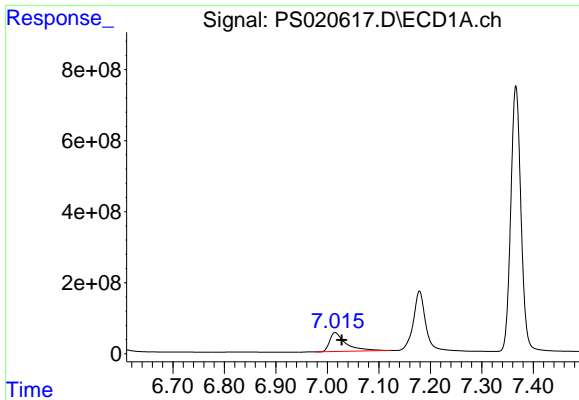
#2 3,5-DICHLOROBENZOIC ACID

R.T.: 6.395 min  
 Delta R.T.: 0.000 min  
 Response: 3668021708  
 Conc: 735.58 ng/ml



#2 3,5-DICHLOROBENZOIC ACID

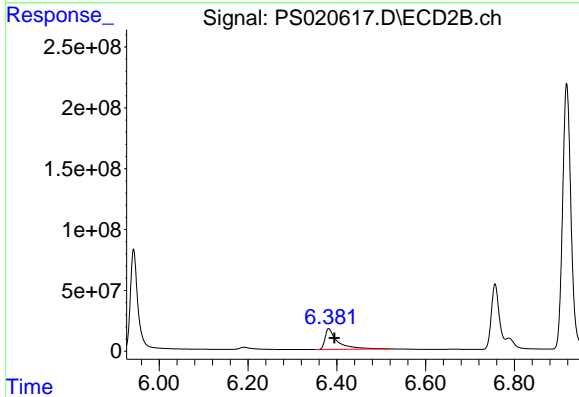
R.T.: 5.943 min  
 Delta R.T.: -0.004 min  
 Response: 984332064  
 Conc: 721.32 ng/ml



#3 4-Nitrophenol

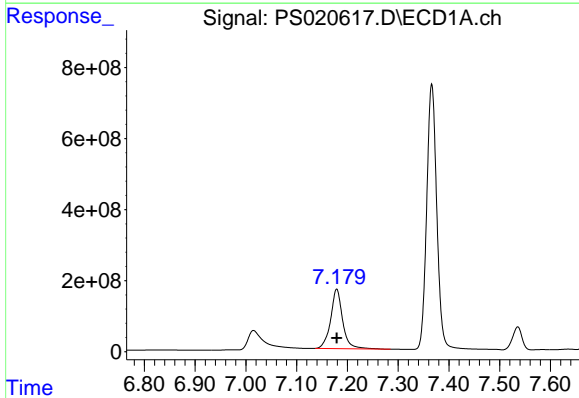
R.T.: 7.015 min  
 Delta R.T.: -0.013 min  
 Response: 1162188982  
 Conc: 731.41 ng/ml

Instrument :  
 ECD\_S  
 ClientSampleId :  
 HSTDCCC750



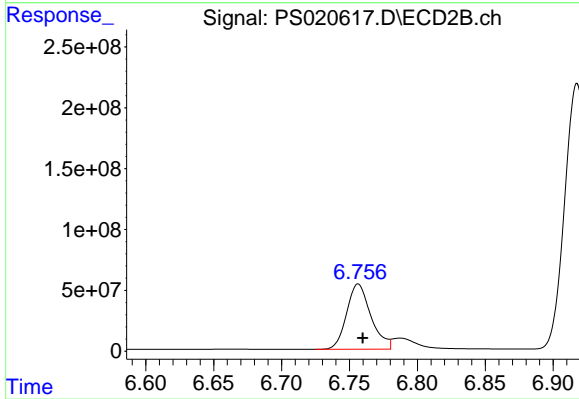
#3 4-Nitrophenol

R.T.: 6.382 min  
 Delta R.T.: -0.012 min  
 Response: 337957523  
 Conc: 717.21 ng/ml



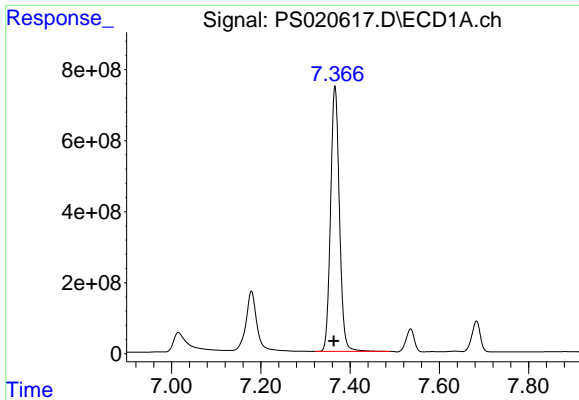
#4 2,4-DCAA

R.T.: 7.179 min  
 Delta R.T.: 0.000 min  
 Response: 2759827499  
 Conc: 801.93 ng/ml



#4 2,4-DCAA

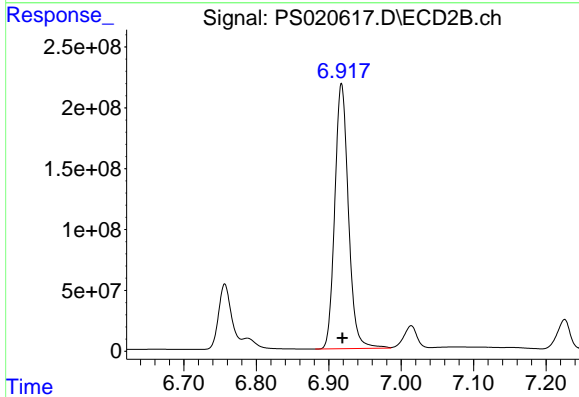
R.T.: 6.756 min  
 Delta R.T.: -0.003 min  
 Response: 668450814  
 Conc: 784.85 ng/ml



#5 DICAMBA

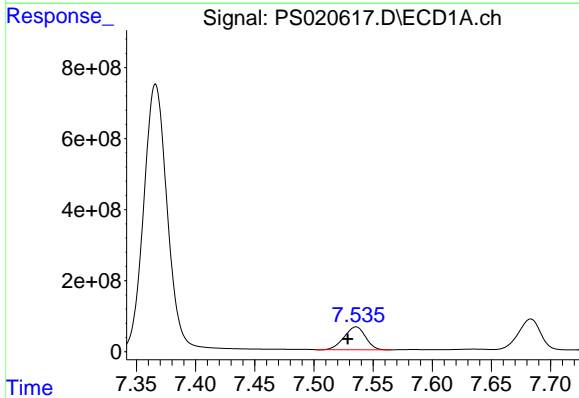
R.T.: 7.366 min  
 Delta R.T.: 0.003 min  
 Response: 10288265419  
 Conc: 752.39 ng/ml

Instrument :  
 ECD\_S  
 ClientSampleId :  
 HSTDCCC750



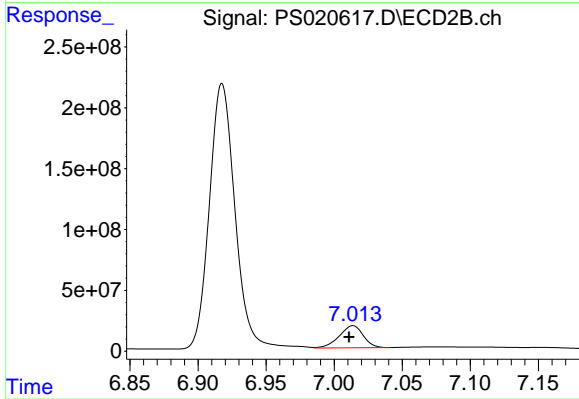
#5 DICAMBA

R.T.: 6.918 min  
 Delta R.T.: -0.001 min  
 Response: 2852818537  
 Conc: 741.06 ng/ml



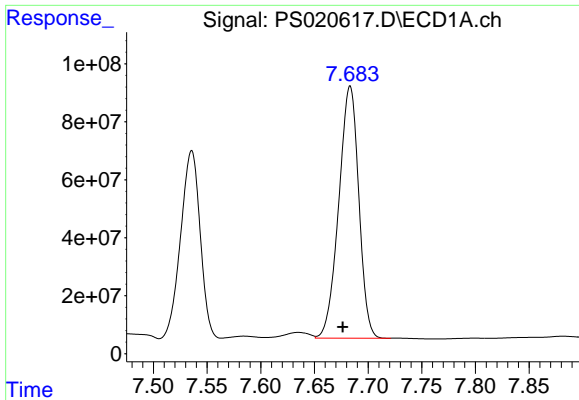
#6 MCP

R.T.: 7.535 min  
 Delta R.T.: 0.007 min  
 Response: 809299115  
 Conc: 77.72 ug/ml



#6 MCP

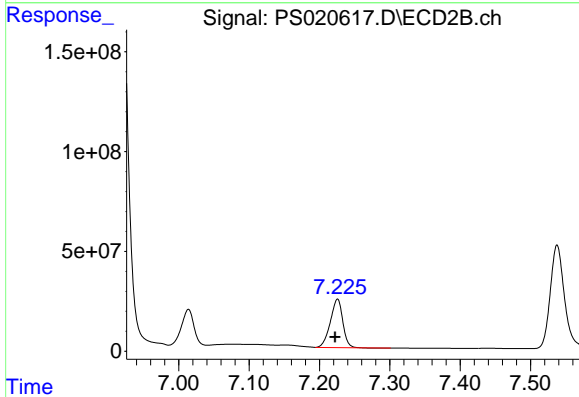
R.T.: 7.014 min  
 Delta R.T.: 0.003 min  
 Response: 223340897  
 Conc: 77.34 ug/ml



#7 MCPA

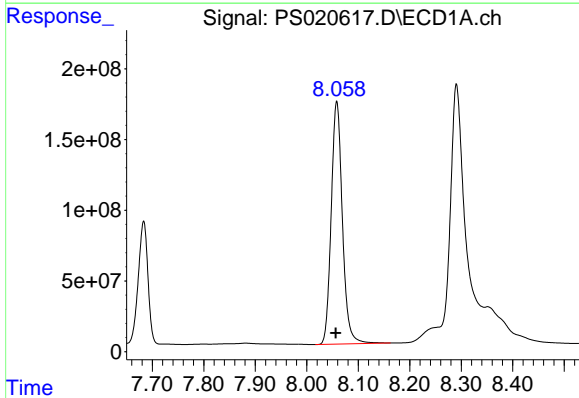
R.T.: 7.683 min  
 Delta R.T.: 0.007 min  
 Response: 1128580460  
 Conc: 76.10 ug/ml

Instrument :  
 ECD\_S  
 ClientSampleId :  
 HSTDCCC750



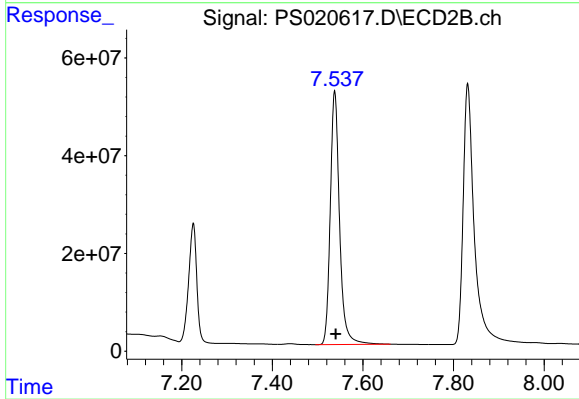
#7 MCPA

R.T.: 7.226 min  
 Delta R.T.: 0.004 min  
 Response: 295448203  
 Conc: 68.43 ug/ml



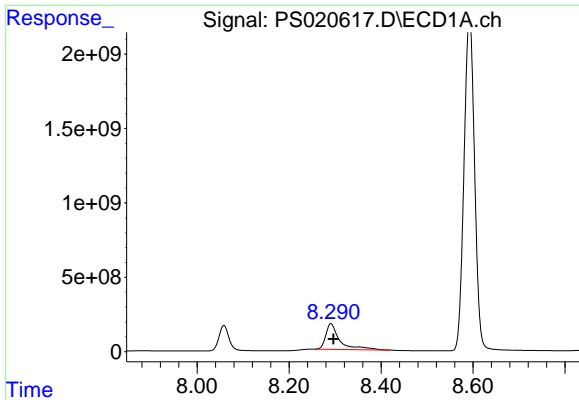
#8 DICHLORPROP

R.T.: 8.058 min  
 Delta R.T.: 0.002 min  
 Response: 2588971915  
 Conc: 718.05 ng/ml



#8 DICHLORPROP

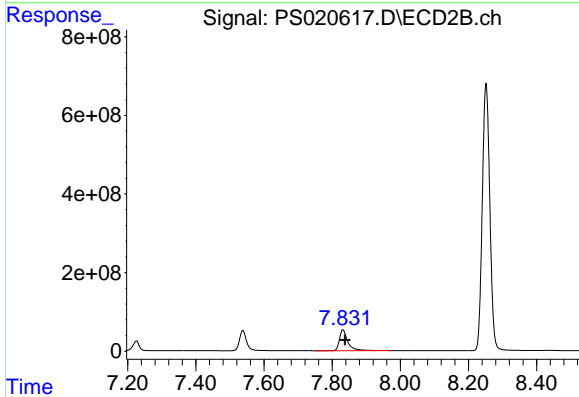
R.T.: 7.538 min  
 Delta R.T.: -0.002 min  
 Response: 736903538  
 Conc: 730.36 ng/ml



#9 2,4-D

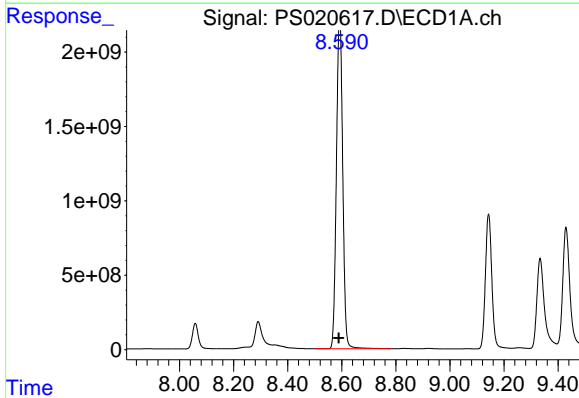
R.T.: 8.291 min  
 Delta R.T.: -0.005 min  
 Response: 3649504202  
 Conc: 785.16 ng/ml

Instrument :  
 ECD\_S  
 ClientSampleId :  
 HSTDCCC750



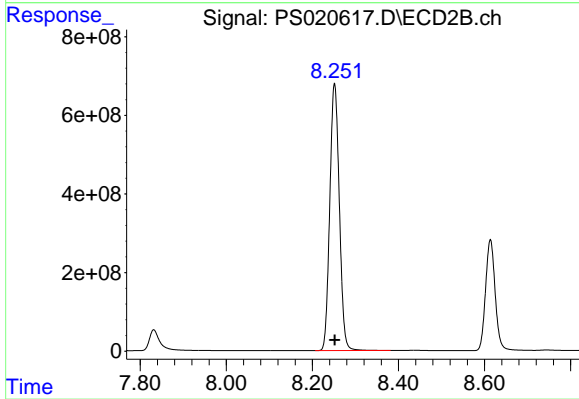
#9 2,4-D

R.T.: 7.831 min  
 Delta R.T.: -0.007 min  
 Response: 911043831  
 Conc: 717.33 ng/ml



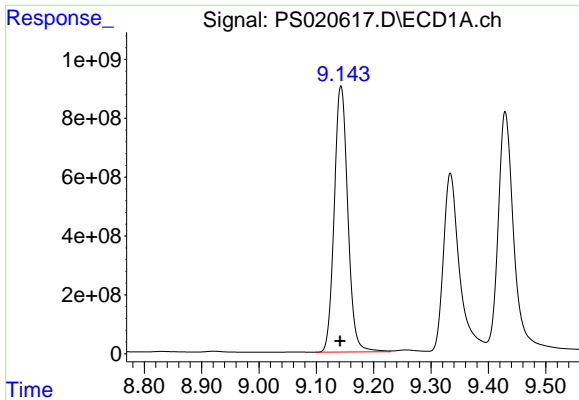
#10 Pentachlorophenol

R.T.: 8.592 min  
 Delta R.T.: 0.003 min  
 Response: 35720943984  
 Conc: 774.46 ng/ml



#10 Pentachlorophenol

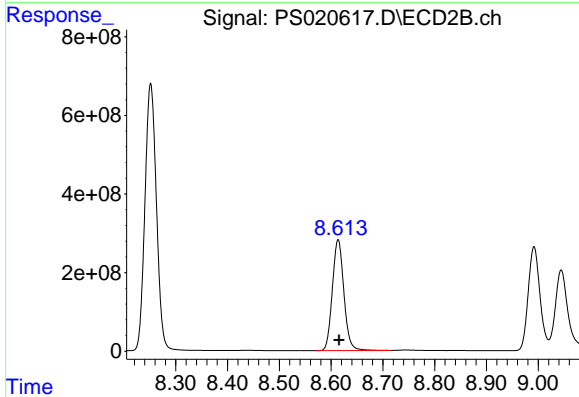
R.T.: 8.252 min  
 Delta R.T.: 0.000 min  
 Response: 10447502825  
 Conc: 737.23 ng/ml



#11 2,4,5-TP (SILVEX)

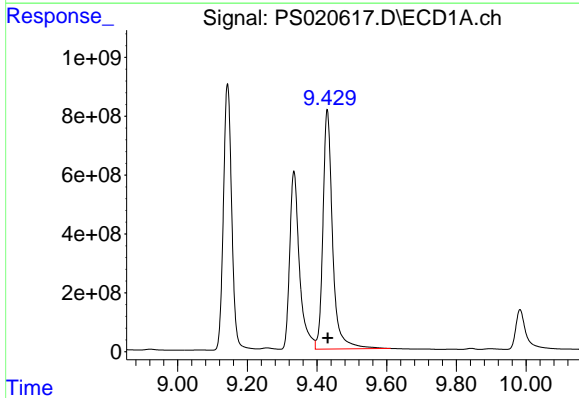
R.T.: 9.143 min  
 Delta R.T.: 0.002 min  
 Response: 14920972381  
 Conc: 729.99 ng/ml

Instrument :  
 ECD\_S  
 ClientSampleId :  
 HSTDCCC750



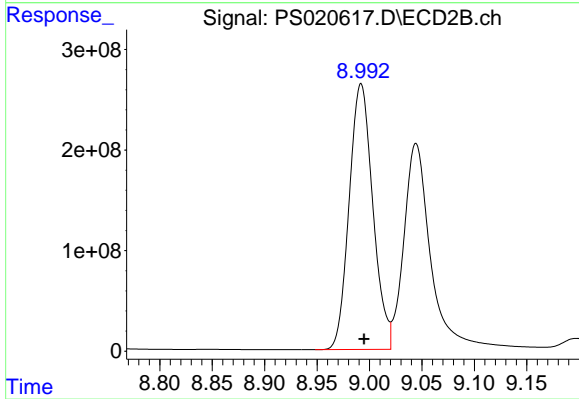
#11 2,4,5-TP (SILVEX)

R.T.: 8.614 min  
 Delta R.T.: -0.002 min  
 Response: 4364304724  
 Conc: 737.35 ng/ml



#12 2,4,5-T

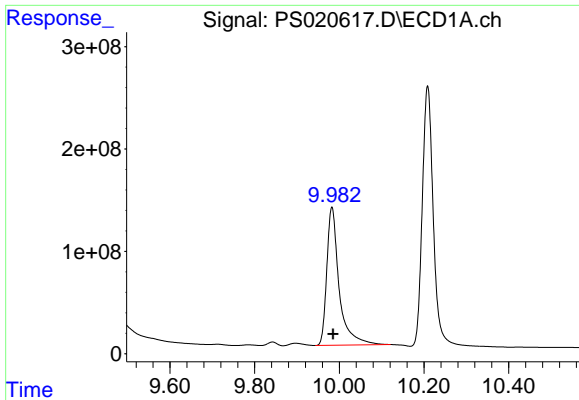
R.T.: 9.429 min  
 Delta R.T.: -0.001 min  
 Response: 15642557321  
 Conc: 706.36 ng/ml



#12 2,4,5-T

R.T.: 8.992 min  
 Delta R.T.: -0.003 min  
 Response: 4153431331  
 Conc: 762.17 ng/ml

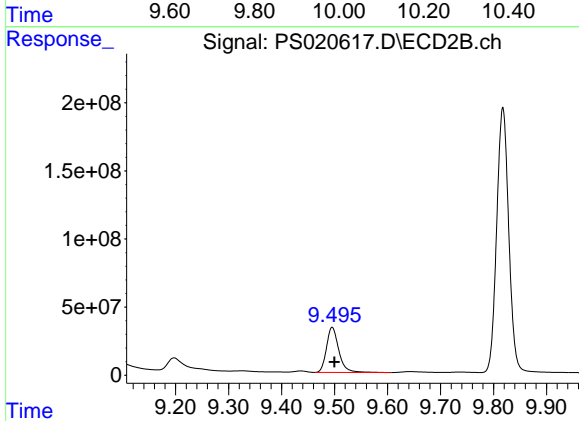




#13 2,4-DB

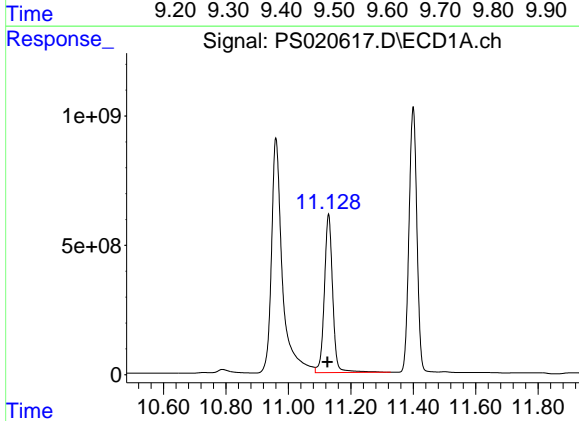
R.T.: 9.983 min  
 Delta R.T.: -0.003 min  
 Response: 2735610082  
 Conc: 753.33 ng/ml

Instrument :  
 ECD\_S  
 ClientSampleId :  
 HSTDCCC750



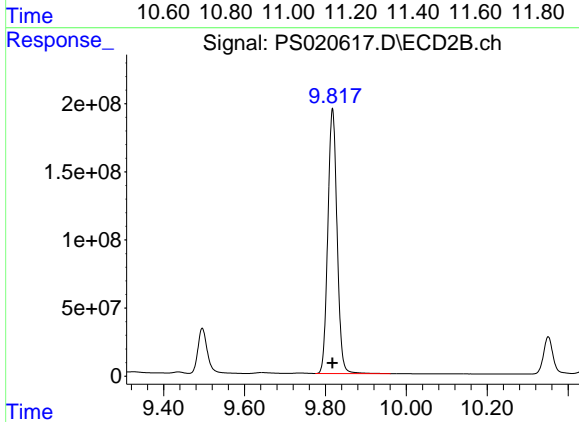
#13 2,4-DB

R.T.: 9.495 min  
 Delta R.T.: -0.004 min  
 Response: 535337046  
 Conc: 748.32 ng/ml



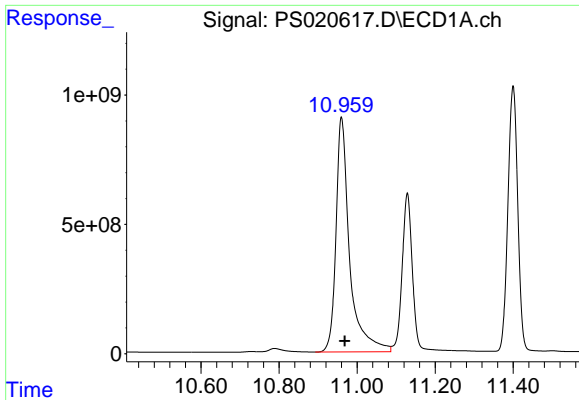
#14 DINOSEB

R.T.: 11.129 min  
 Delta R.T.: 0.004 min  
 Response: 11343540903  
 Conc: 617.66 ng/ml



#14 DINOSEB

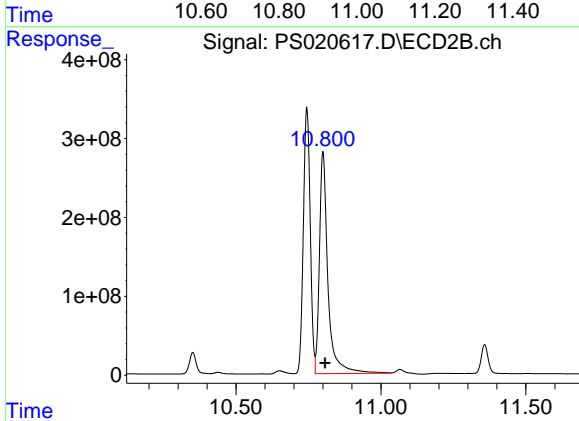
R.T.: 9.818 min  
 Delta R.T.: 0.000 min  
 Response: 3078188419  
 Conc: 717.90 ng/ml



#15 Picloram

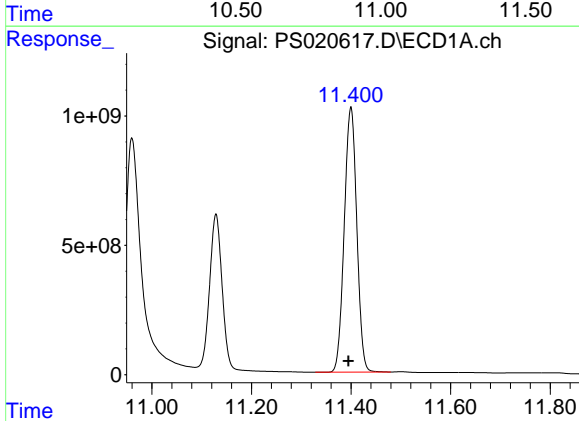
R.T.: 10.960 min  
 Delta R.T.: -0.008 min  
 Response: 22052137450  
 Conc: 732.79 ng/ml

Instrument :  
 ECD\_S  
 ClientSampleId :  
 HSTDCCC750



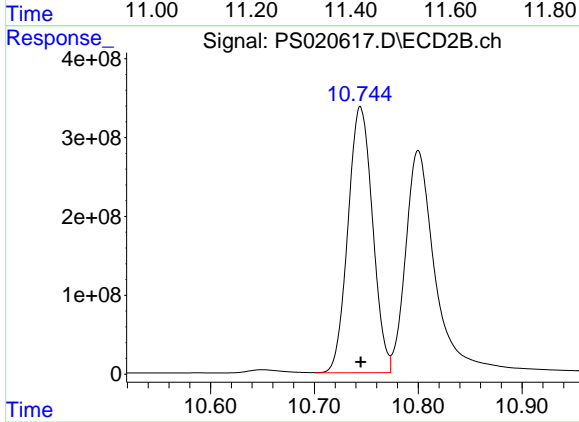
#15 Picloram

R.T.: 10.800 min  
 Delta R.T.: -0.008 min  
 Response: 5757797289  
 Conc: 714.99 ng/ml



#16 DCPA

R.T.: 11.400 min  
 Delta R.T.: 0.005 min  
 Response: 17873088410  
 Conc: 697.67 ng/ml



#16 DCPA

R.T.: 10.744 min  
 Delta R.T.: 0.000 min  
 Response: 5548838444  
 Conc: 752.33 ng/ml