

Data Path : Z:\pestpcbsrv\HPCHEM1\ECD\_S\Data\PS092120\  
 Data File : PS012409.D  
 Signal(s) : Signal #1: ECD1A.ch Signal #2: ECD2B.ch  
 Acq On : 21 Sep 2020 19:42  
 Operator : DD\AJ  
 Sample : L4032-02MS  
 Misc :  
 ALS Vial : 10 Sample Multiplier: 1

Instrument :  
 ECD\_S  
 ClientSampleId :  
 SOIL-BORINGMS

Integration File signal 1: autoint1.e  
 Integration File signal 2: autoint2.e  
 Quant Time: Sep 22 02:42:28 2020  
 Quant Method : Z:\pestpcbsrv\HPCHEM1\ECD\_S\Method\PS091420.M  
 Quant Title : 8080.M  
 QLast Update : Tue Sep 15 06:03:04 2020  
 Response via : Initial Calibration  
 Integrator: ChemStation

Volume Inj. : 2 µl  
 Signal #1 Phase : Rtx-CLPesticides Signal #2 Phase: Rtx-CLPesticides2  
 Signal #1 Info : 30M x 0.32mm x0.5 Signal #2 Info : 30M x 0.32mm x 0.25µm

	Compound	RT#1	RT#2	Resp#1	Resp#2	ng/ml	ng/ml
-----							
System Monitoring Compounds							
4) S	2,4-DCAA	7.214	6.911	429.9E6	140.0E6	396.607	265.393 #
Target Compounds							
1) T	Dalapon	3.031	2.620	309.5E6	514058	252.164	<MDL #
2) T	3,5-DICHL...	6.430	6.065	162.3E6	62927797	110.700	77.785 #
3) T	4-Nitroph...	7.046	6.540	30016365	19367835	56.365	60.551
5) T	DICAMBA	7.404	7.078	681.5E6	326.1E6	161.975	151.194
6) T	MCPP	7.569	7.169	32676793	9834790	10.141	5.715 #
7) T	MCPA	7.717	7.381	81789944	104.7E6	17.505	37.250 #
8) T	DICHLORPROP	8.096	7.704	93213782	78868469	91.145	139.390 #
9) T	2,4-D	8.328	7.999	265.4E6	145.7E6	233.030	200.328
10) T	Pentachlo...	8.635	8.426	1062.8E6	694.2E6	72.255	102.497 #
11) T	2,4,5-TP ...	9.183	8.786	583.2E6	277.4E6	99.096	95.837
12) T	2,4,5-T	9.469	9.166	609.2E6	325.5E6	99.333	113.021
13) T	2,4-DB	10.023	9.677	27211422	91809781	35.562	225.652 #
14) T	DINOSEB	11.178	10.005	379.8E6	128.4E6	80.868	61.847
15) T	Picloram	11.002	10.988	2354.4E6	1230.2E6	319.763	290.173
16) T	DCPA	11.446	10.932	1798.4E6	983.1E6	243.014	270.471

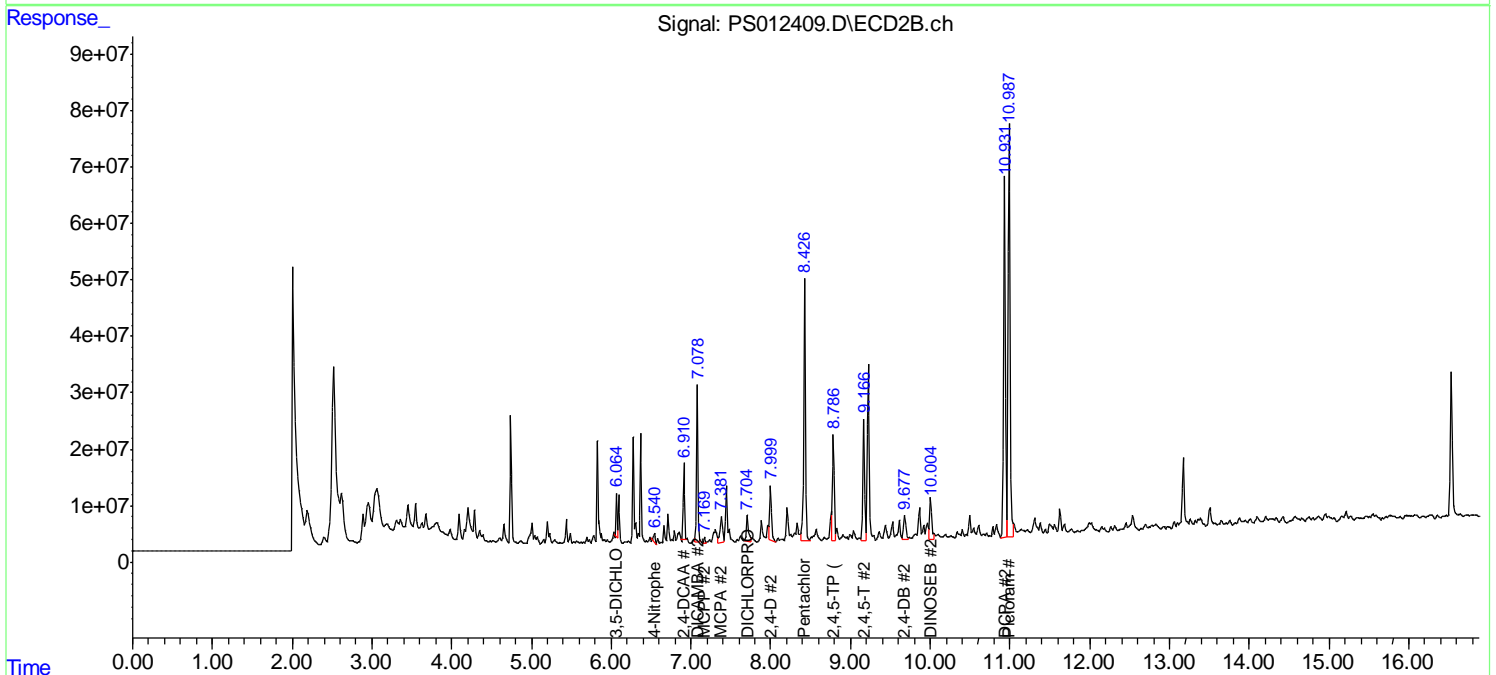
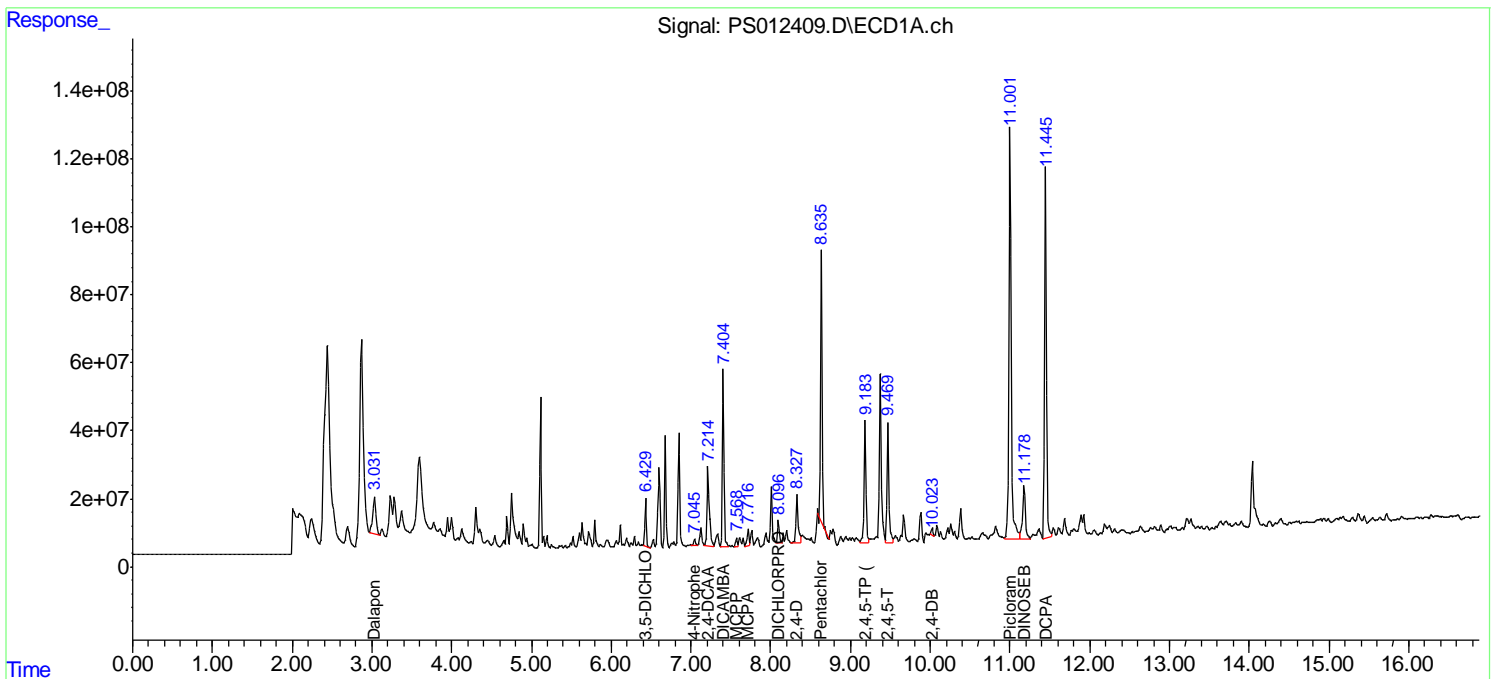
(f)=RT Delta > 1/2 Window (#)=Amounts differ by > 25% (m)=manual int.

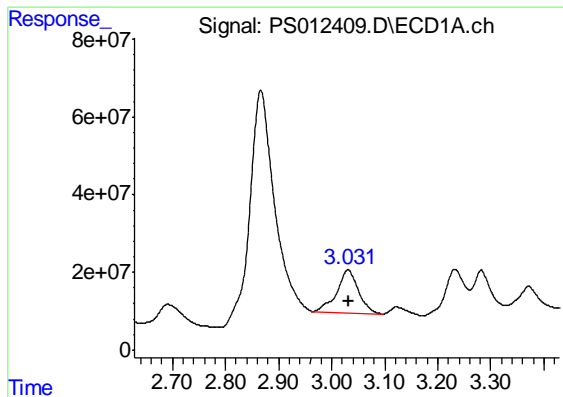
Data Path : Z:\pestpcbsrv\HPCHEM1\ECD\_S\Data\PS092120\  
 Data File : PS012409.D  
 Signal(s) : Signal #1: ECD1A.ch Signal #2: ECD2B.ch  
 Acq On : 21 Sep 2020 19:42  
 Operator : DD\AJ  
 Sample : L4032-02MS  
 Misc :  
 ALS Vial : 10 Sample Multiplier: 1

Instrument :  
 ECD\_S  
 ClientSampled :  
 SOIL-BORINGMS

Integration File signal 1: autoint1.e  
 Integration File signal 2: autoint2.e  
 Quant Time: Sep 22 02:42:28 2020  
 Quant Method : Z:\pestpcbsrv\HPCHEM1\ECD\_S\Method\PS091420.M  
 Quant Title : 8080.M  
 QLast Update : Tue Sep 15 06:03:04 2020  
 Response via : Initial Calibration  
 Integrator: ChemStation

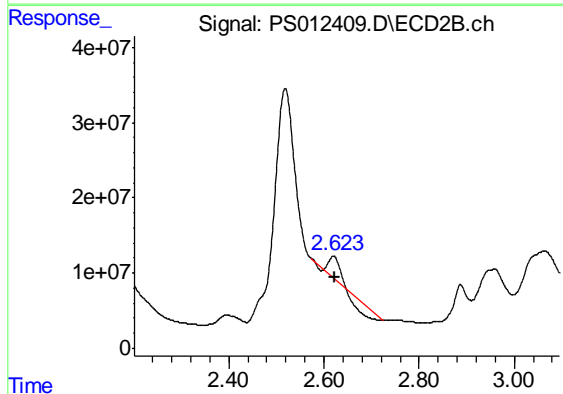
Volume Inj. : 2 µl  
 Signal #1 Phase : Rtx-CLPesticides Signal #2 Phase: Rtx-CLPesticides2  
 Signal #1 Info : 30M x 0.32mm x0.5 Signal #2 Info : 30M x 0.32mm x 0.25µm



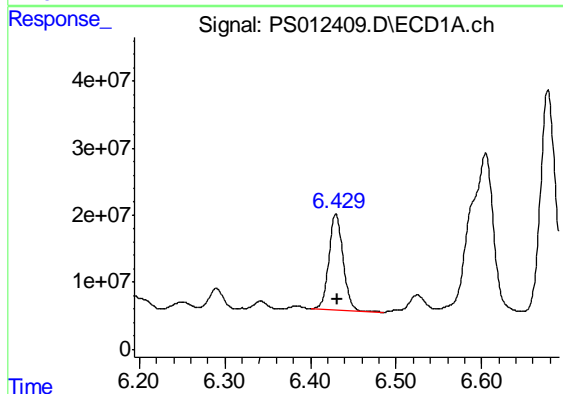


#1 Dalapon  
 R.T.: 3.031 min  
 Delta R.T.: -0.001 min  
 Response: 309540278  
 Conc: 252.16 ng/ml

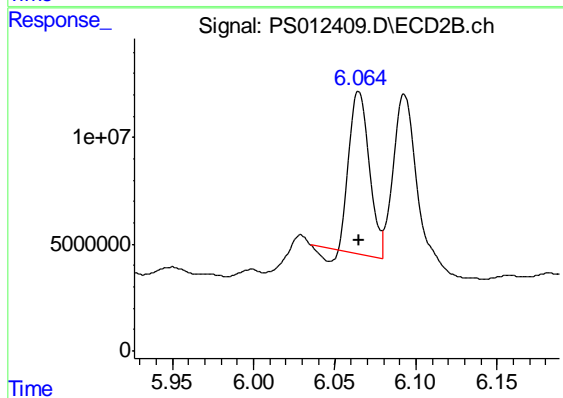
Instrument :  
 ECD\_S  
 ClientSampleId :  
 SOIL-BORINGMS



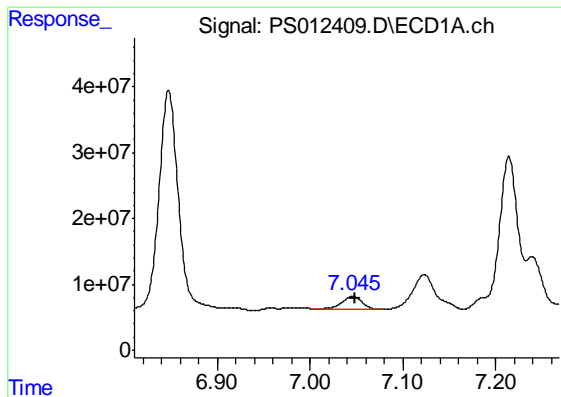
#1 Dalapon  
 R.T.: 2.620 min  
 Delta R.T.: -0.001 min  
 Response: 514058  
 Conc: N.D.



#2 3,5-DICHLOROBENZOIC ACID  
 R.T.: 6.430 min  
 Delta R.T.: -0.002 min  
 Response: 162308450  
 Conc: 110.70 ng/ml



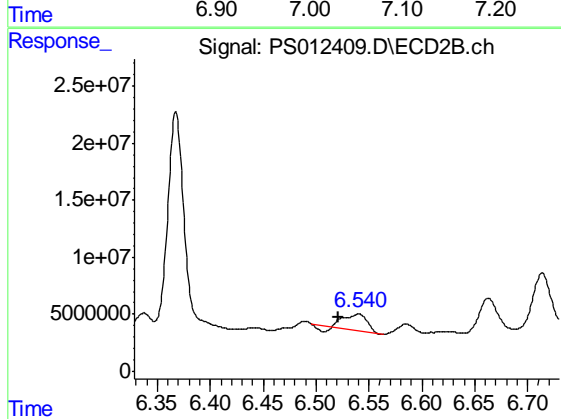
#2 3,5-DICHLOROBENZOIC ACID  
 R.T.: 6.065 min  
 Delta R.T.: 0.000 min  
 Response: 62927797  
 Conc: 77.78 ng/ml



#3 4-Nitrophenol

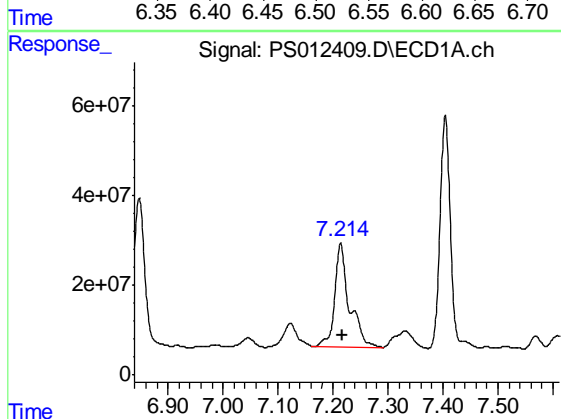
R.T.: 7.046 min  
 Delta R.T.: -0.003 min  
 Response: 30016365  
 Conc: 56.36 ng/ml

Instrument :  
 ECD\_S  
 ClientSampleId :  
 SOIL-BORINGMS



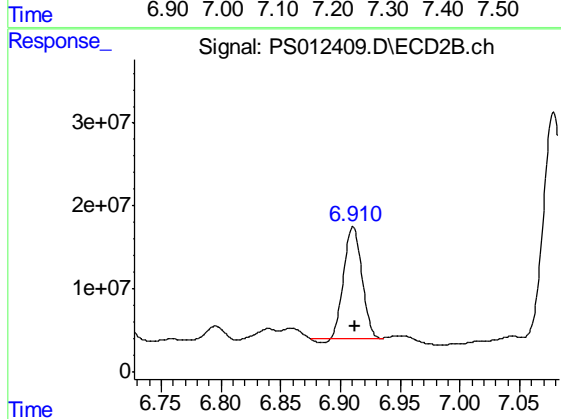
#3 4-Nitrophenol

R.T.: 6.540 min  
 Delta R.T.: 0.019 min  
 Response: 19367835  
 Conc: 60.55 ng/ml



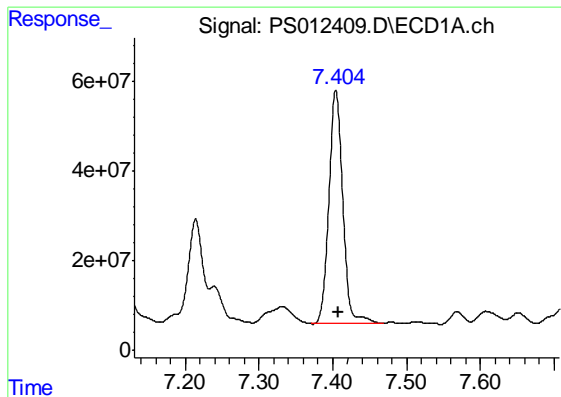
#4 2,4-DCAA

R.T.: 7.214 min  
 Delta R.T.: -0.002 min  
 Response: 429880990  
 Conc: 396.61 ng/ml



#4 2,4-DCAA

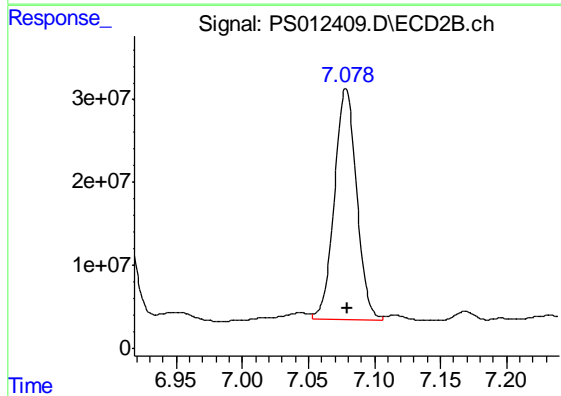
R.T.: 6.911 min  
 Delta R.T.: -0.002 min  
 Response: 140022880  
 Conc: 265.39 ng/ml



#5 DICAMBA

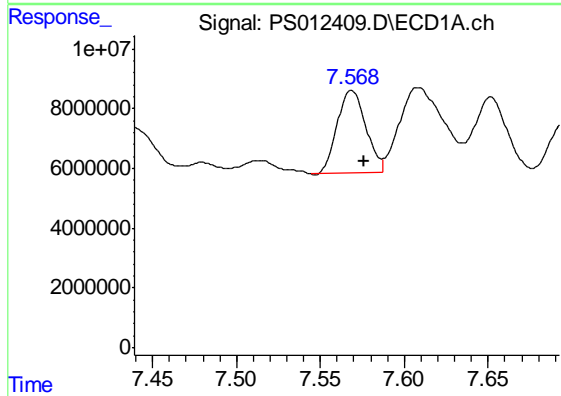
R.T.: 7.404 min  
 Delta R.T.: -0.003 min  
 Response: 681531718  
 Conc: 161.98 ng/ml

Instrument :  
 ECD\_S  
 ClientSampleId :  
 SOIL-BORINGMS



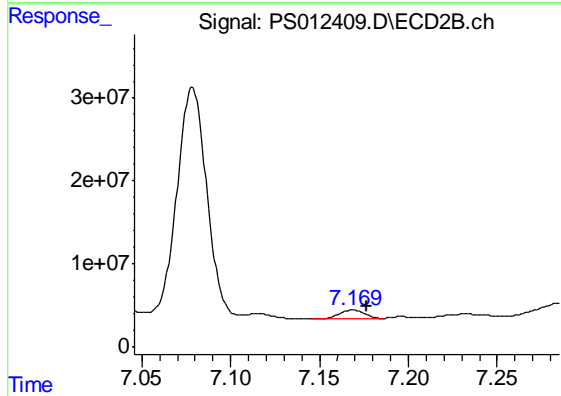
#5 DICAMBA

R.T.: 7.078 min  
 Delta R.T.: -0.002 min  
 Response: 326089170  
 Conc: 151.19 ng/ml



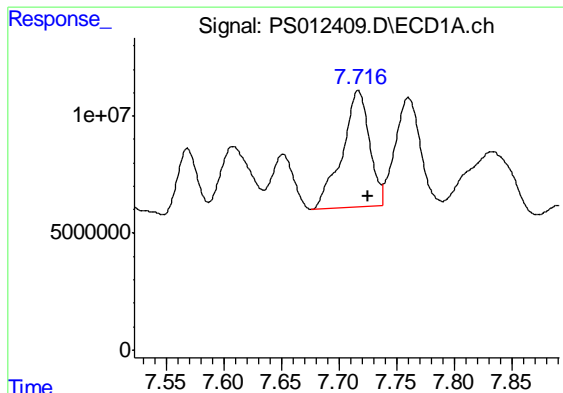
#6 MCPP

R.T.: 7.569 min  
 Delta R.T.: -0.007 min  
 Response: 32676793  
 Conc: 10.14 ug/ml



#6 MCPP

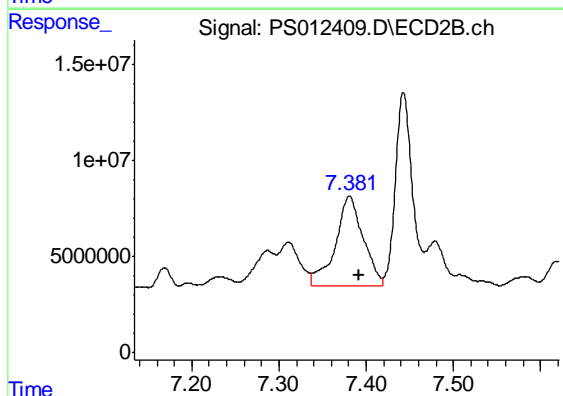
R.T.: 7.169 min  
 Delta R.T.: -0.008 min  
 Response: 9834790  
 Conc: 5.71 ug/ml



#7 MCPA

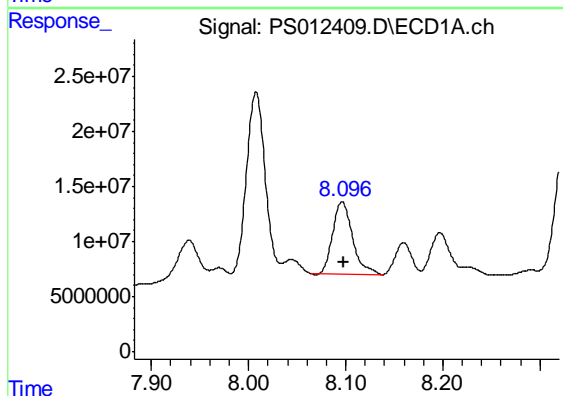
R.T.: 7.717 min  
 Delta R.T.: -0.009 min  
 Response: 81789944  
 Conc: 17.50 ug/ml

Instrument :  
 ECD\_S  
 ClientSampleId :  
 SOIL-BORINGMS



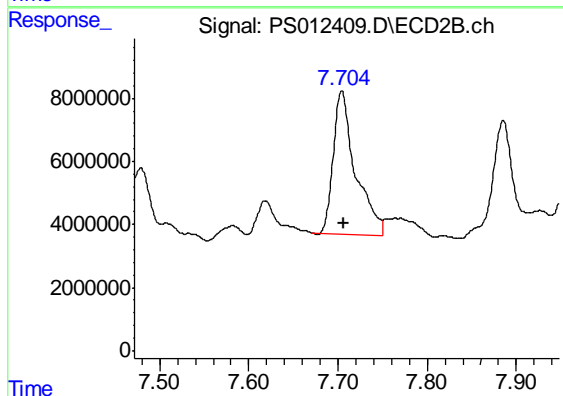
#7 MCPA

R.T.: 7.381 min  
 Delta R.T.: -0.011 min  
 Response: 104681279  
 Conc: 37.25 ug/ml



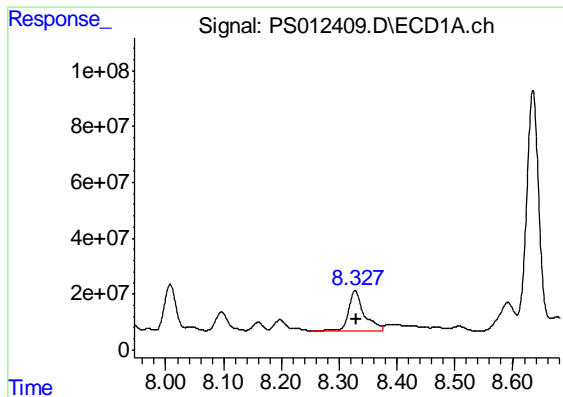
#8 DICHLORPROP

R.T.: 8.096 min  
 Delta R.T.: -0.002 min  
 Response: 93213782  
 Conc: 91.15 ng/ml



#8 DICHLORPROP

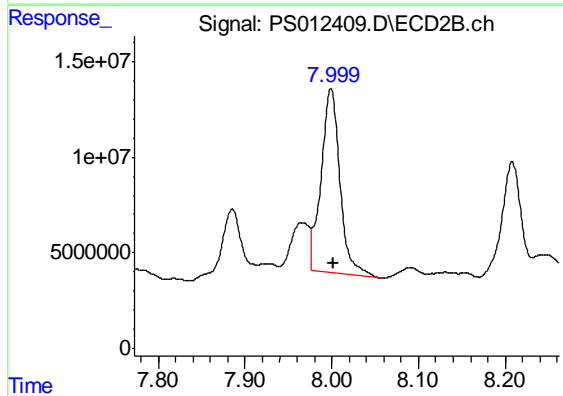
R.T.: 7.704 min  
 Delta R.T.: -0.002 min  
 Response: 78868469  
 Conc: 139.39 ng/ml



#9 2,4-D

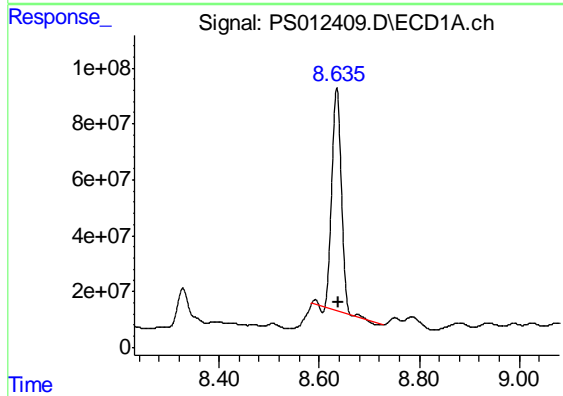
R.T.: 8.328 min  
 Delta R.T.: -0.002 min  
 Response: 265410547  
 Conc: 233.03 ng/ml

Instrument :  
 ECD\_S  
 ClientSampleId :  
 SOIL-BORINGMS



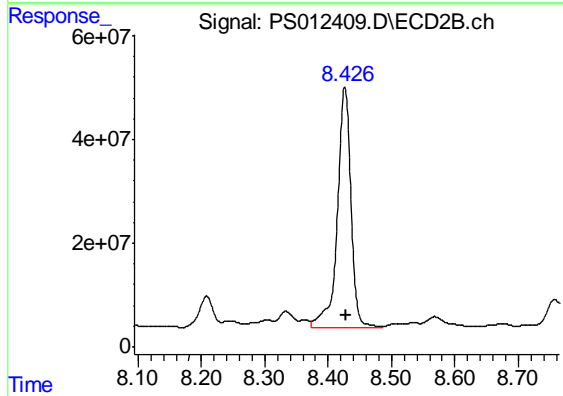
#9 2,4-D

R.T.: 7.999 min  
 Delta R.T.: -0.002 min  
 Response: 145722990  
 Conc: 200.33 ng/ml



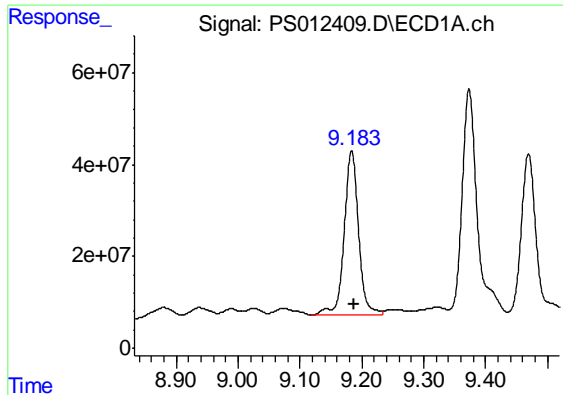
#10 Pentachlorophenol

R.T.: 8.635 min  
 Delta R.T.: -0.003 min  
 Response: 1062828001  
 Conc: 72.26 ng/ml



#10 Pentachlorophenol

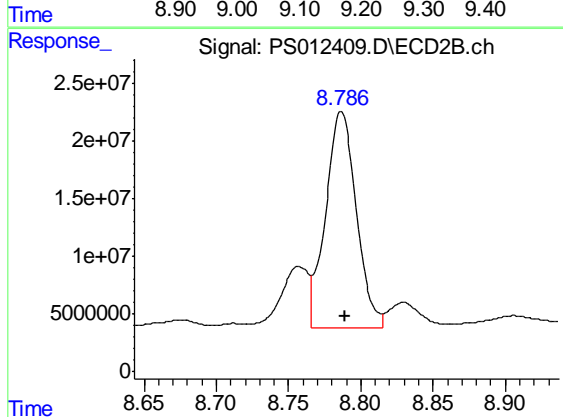
R.T.: 8.426 min  
 Delta R.T.: -0.002 min  
 Response: 694188975  
 Conc: 102.50 ng/ml



#11 2,4,5-TP (SILVEX)

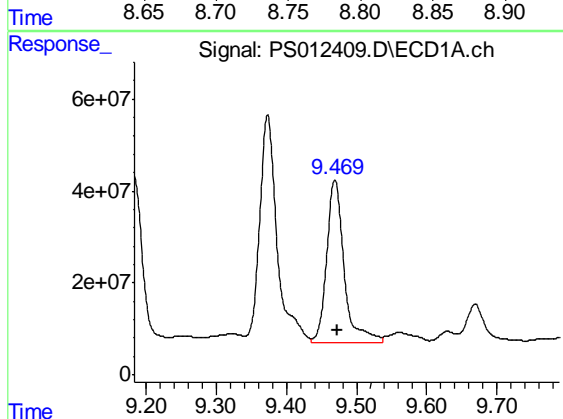
R.T.: 9.183 min  
 Delta R.T.: -0.003 min  
 Response: 583228247  
 Conc: 99.10 ng/ml

Instrument :  
 ECD\_S  
 ClientSampleId :  
 SOIL-BORINGMS



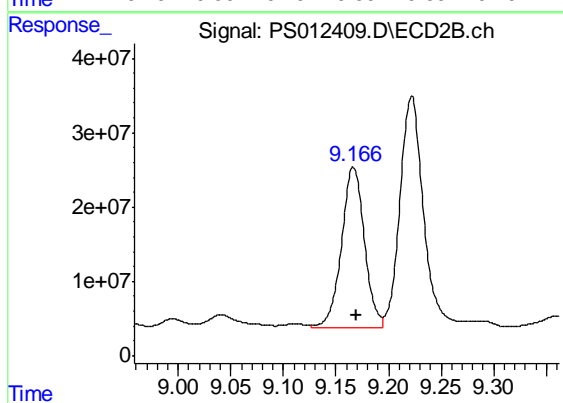
#11 2,4,5-TP (SILVEX)

R.T.: 8.786 min  
 Delta R.T.: -0.003 min  
 Response: 277367030  
 Conc: 95.84 ng/ml



#12 2,4,5-T

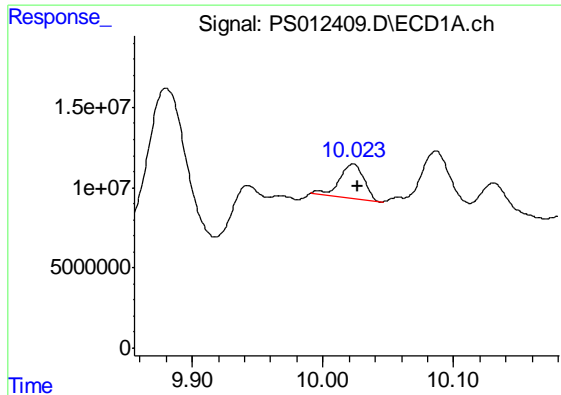
R.T.: 9.469 min  
 Delta R.T.: -0.004 min  
 Response: 609217440  
 Conc: 99.33 ng/ml



#12 2,4,5-T

R.T.: 9.166 min  
 Delta R.T.: -0.003 min  
 Response: 325522013  
 Conc: 113.02 ng/ml

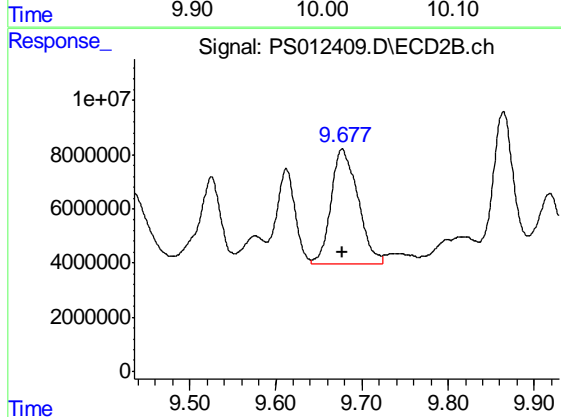




#13 2,4-DB

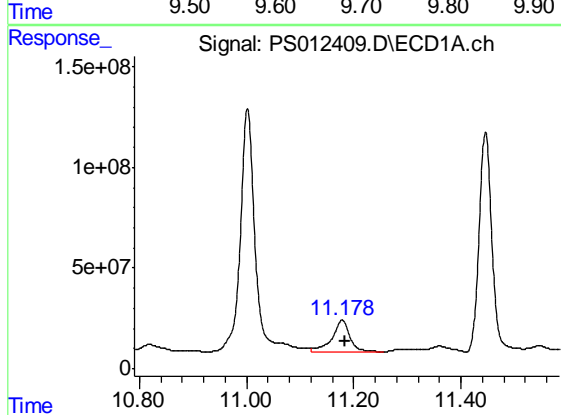
R.T.: 10.023 min  
 Delta R.T.: -0.004 min  
 Response: 27211422  
 Conc: 35.56 ng/ml

Instrument :  
 ECD\_S  
 ClientSampleId :  
 SOIL-BORINGMS



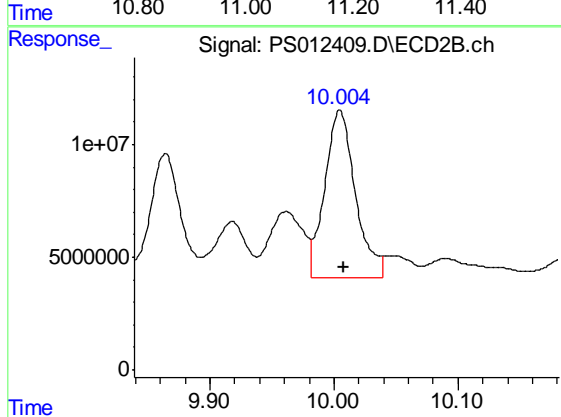
#13 2,4-DB

R.T.: 9.677 min  
 Delta R.T.: 0.000 min  
 Response: 91809781  
 Conc: 225.65 ng/ml



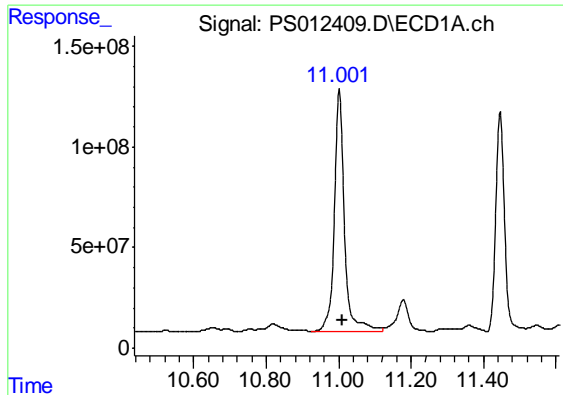
#14 DINOSEB

R.T.: 11.178 min  
 Delta R.T.: -0.004 min  
 Response: 379761996  
 Conc: 80.87 ng/ml



#14 DINOSEB

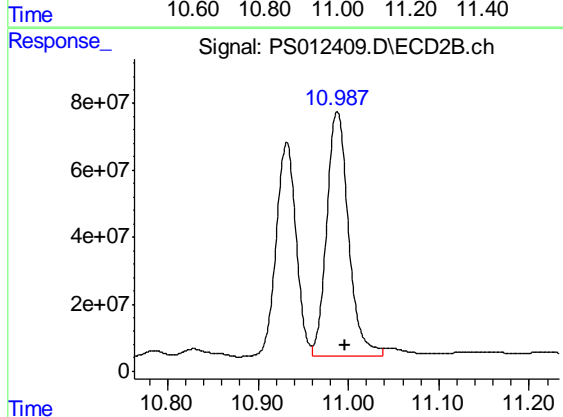
R.T.: 10.005 min  
 Delta R.T.: -0.003 min  
 Response: 128447089  
 Conc: 61.85 ng/ml



#15 Picloram

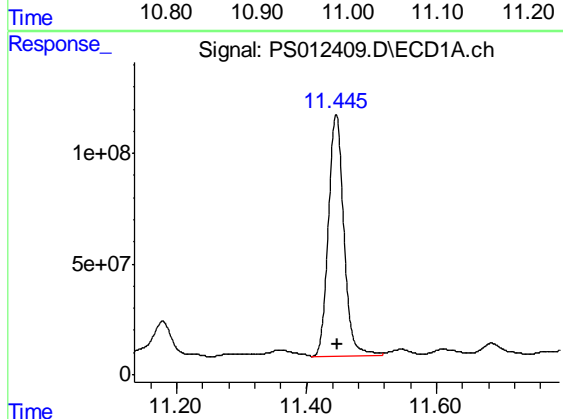
R.T.: 11.002 min  
 Delta R.T.: -0.007 min  
 Response: 2354406508  
 Conc: 319.76 ng/ml

Instrument :  
 ECD\_S  
 ClientSampleId :  
 SOIL-BORINGMS



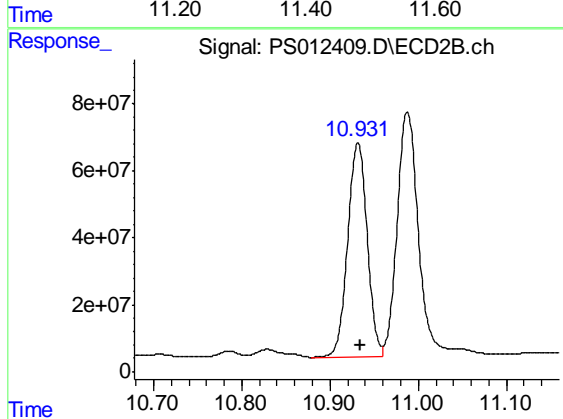
#15 Picloram

R.T.: 10.988 min  
 Delta R.T.: -0.008 min  
 Response: 1230163644  
 Conc: 290.17 ng/ml



#16 DCPA

R.T.: 11.446 min  
 Delta R.T.: -0.003 min  
 Response: 1798404868  
 Conc: 243.01 ng/ml



#16 DCPA

R.T.: 10.932 min  
 Delta R.T.: -0.003 min  
 Response: 983089289  
 Conc: 270.47 ng/ml