

Data Path : Z:\pestpcbsrv\HPCHEM1\ECD_S\Data\PS092223\
 Data File : PS024364.D
 Signal(s) : Signal #1: ECD1A.ch Signal #2: ECD2B.ch
 Acq On : 22 Sep 2023 13:52
 Operator : AR\AJ
 Sample : 04501-07
 Misc :
 ALS Vial : 14 Sample Multiplier: 1

Instrument :
 ECD_S
 ClientSampleId :

Integration File signal 1: autoint1.e
 Integration File signal 2: autoint2.e
 Quant Time: Sep 22 14:13:15 2023
 Quant Method : Z:\pestpcbsrv\HPCHEM1\ECD_S\Method\PS082823.M
 Quant Title : 8080.M
 QLast Update : Mon Aug 28 16:48:10 2023
 Response via : Initial Calibration
 Integrator: ChemStation

Volume Inj. : 2 µl
 Signal #1 Phase : Rtx-CLPesticides Signal #2 Phase: Rtx-CLPesticides2
 Signal #1 Info : 30M x 0.32mm x0.5 Signal #2 Info : 30M x 0.32mm x 0.25µm

	Compound	RT#1	RT#2	Resp#1	Resp#2	ng/ml	ng/ml

System Monitoring Compounds							
4) S	2,4-DCAA	6.361	6.787	329.7E6	111.3E6	165.508	165.789
Target Compounds							
2) T	3,5-DICHL...	5.680f	5.991	21360652	2867494	7.027	2.750 #
3) T	4-Nitroph...	6.176	6.376	62600141	1137864	50.388	2.698 #
5) T	DICAMBA	6.526	6.994	17397971	-5179611	1.996	N.D. #
6) T	MCPP	6.677	7.098f	70629707	-6890786	11.342	N.D. #
8) T	DICHLORPROP	7.123	7.574	70730537	35668974	31.113	49.092 #
9) T	2,4-D	7.292	7.874	13711326	-659095	5.155	N.D. #
10) T	Pentachlo...	7.521	8.272	35906103	4220833	1.148	<MDL #
12) T	2,4,5-T	8.309	8.984	93258187	8167867	7.527	2.035 #
13) T	2,4-DB	8.812	9.508	170.5E6	30441123	79.107	66.232
14) T	DINOSEB	9.885	9.821	23690068	44622885	2.452	14.928 #
15) T	Picloram	9.680	10.809	-46545010	25362548	N.D.	4.271
16) T	DCPA	10.126	10.809f	172.9E6	25362548	10.679	4.944 #

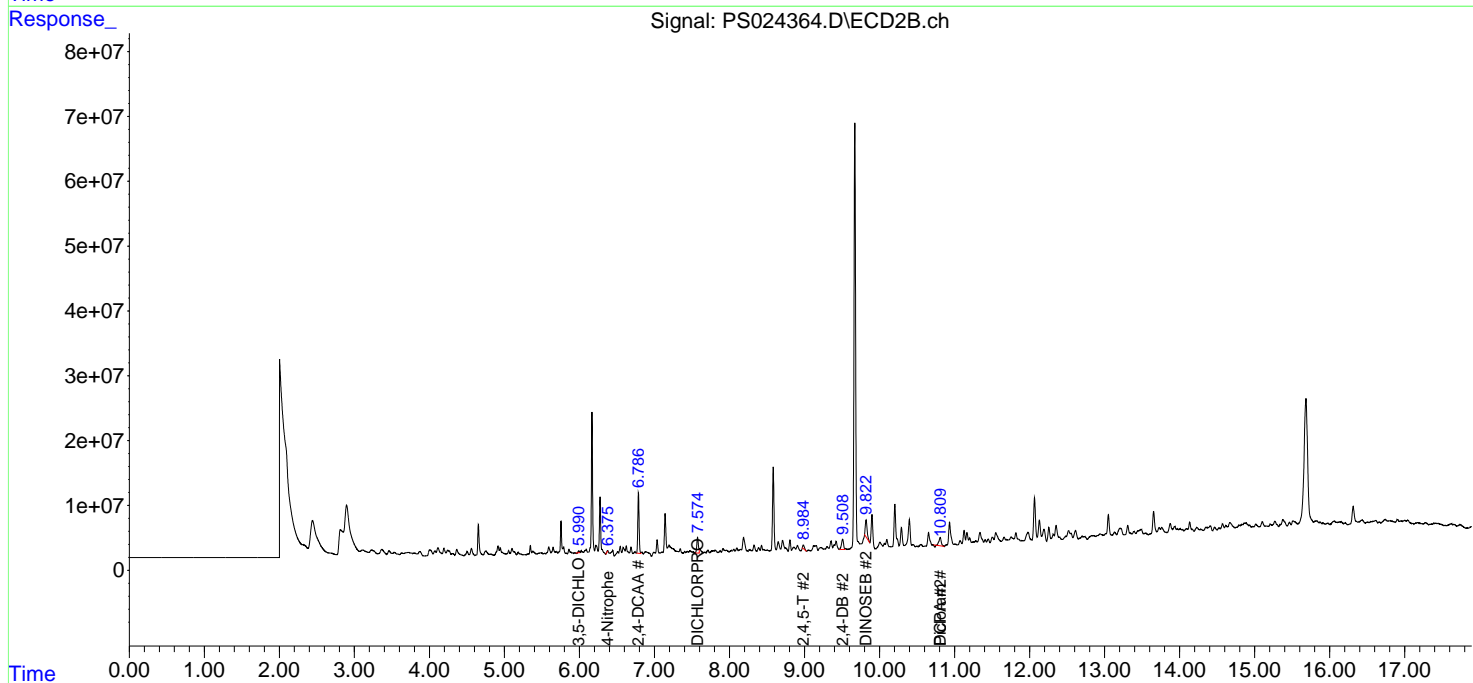
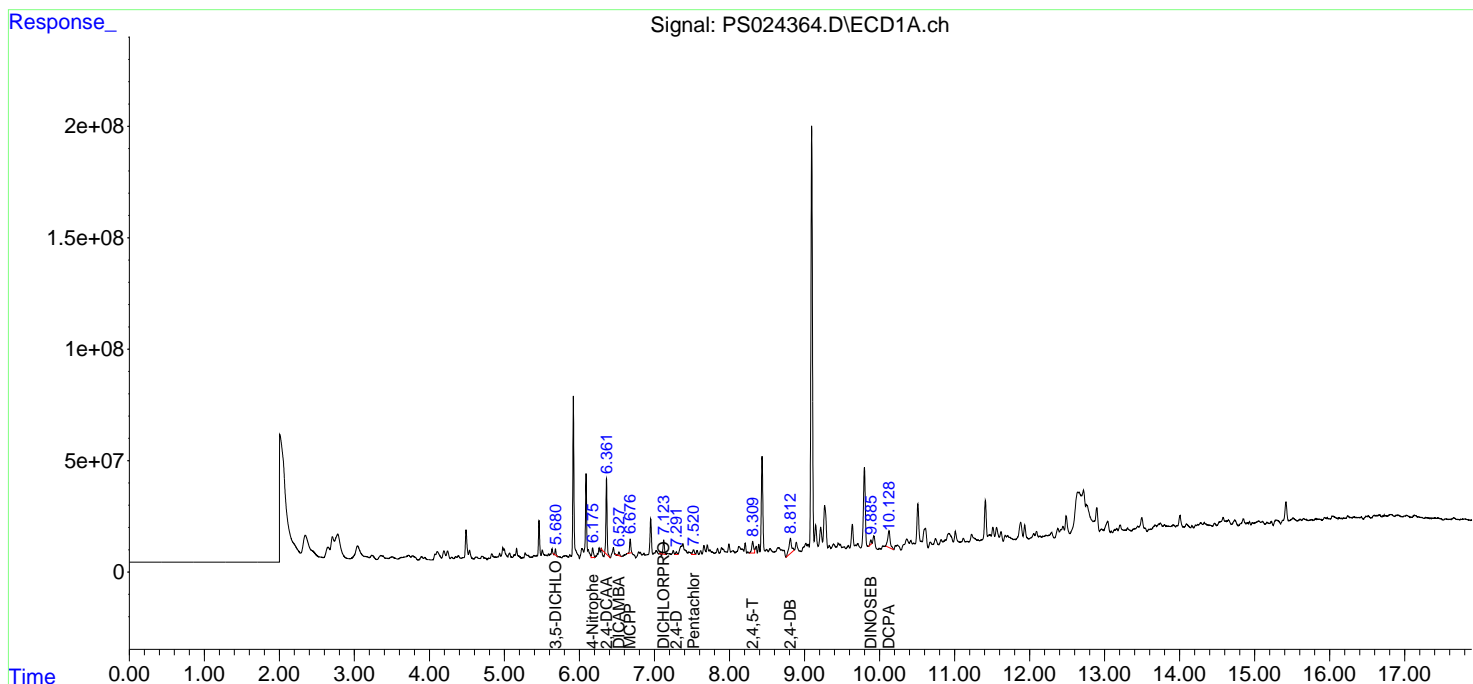
(f)=RT Delta > 1/2 Window (#)=Amounts differ by > 25% (m)=manual int.

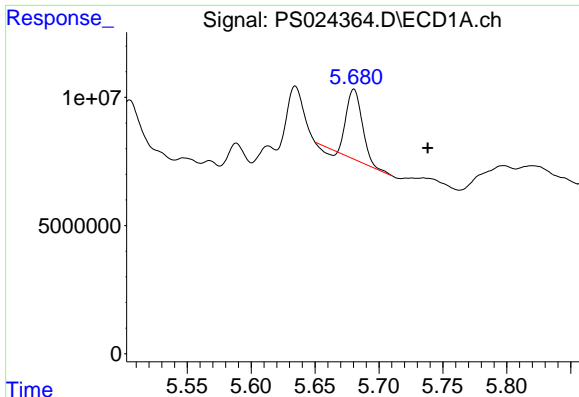
Data Path : Z:\pestpcbsrv\HPCHEM1\ECD_S\Data\PS092223\
 Data File : PS024364.D
 Signal(s) : Signal #1: ECD1A.ch Signal #2: ECD2B.ch
 Acq On : 22 Sep 2023 13:52
 Operator : AR\AJ
 Sample : 04501-07
 Misc :
 ALS Vial : 14 Sample Multiplier: 1

Instrument :
 ECD_S
 ClientSampleId :

Integration File signal 1: autoint1.e
 Integration File signal 2: autoint2.e
 Quant Time: Sep 22 14:13:15 2023
 Quant Method : Z:\pestpcbsrv\HPCHEM1\ECD_S\Method\PS082823.M
 Quant Title : 8080.M
 QLast Update : Mon Aug 28 16:48:10 2023
 Response via : Initial Calibration
 Integrator: ChemStation

Volume Inj. : 2 µl
 Signal #1 Phase : Rtx-CLPesticides Signal #2 Phase: Rtx-CLPesticides2
 Signal #1 Info : 30M x 0.32mm x0.5 Signal #2 Info : 30M x 0.32mm x 0.25µm

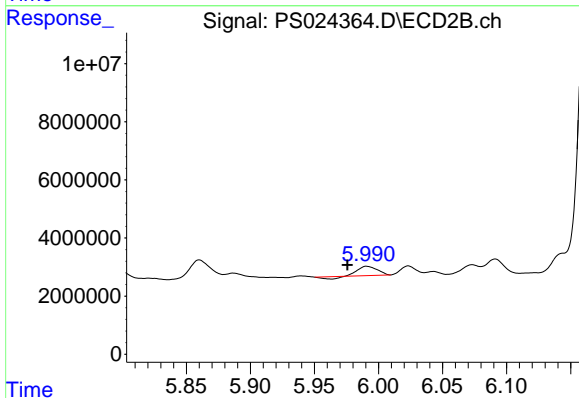




#2 3,5-DICHLORO BENZOIC ACID

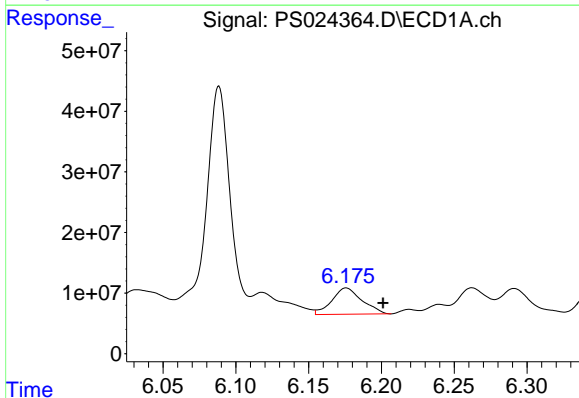
R.T.: 5.680 min
 Delta R.T.: -0.058 min
 Response: 21360652
 Conc: 7.03 ng/ml

Instrument :
 ECD_S
 ClientSampleId :



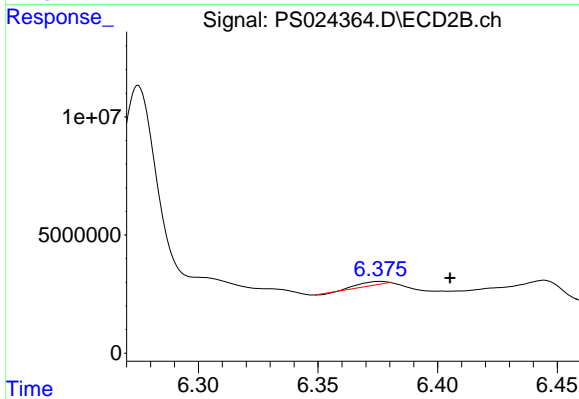
#2 3,5-DICHLORO BENZOIC ACID

R.T.: 5.991 min
 Delta R.T.: 0.015 min
 Response: 2867494
 Conc: 2.75 ng/ml



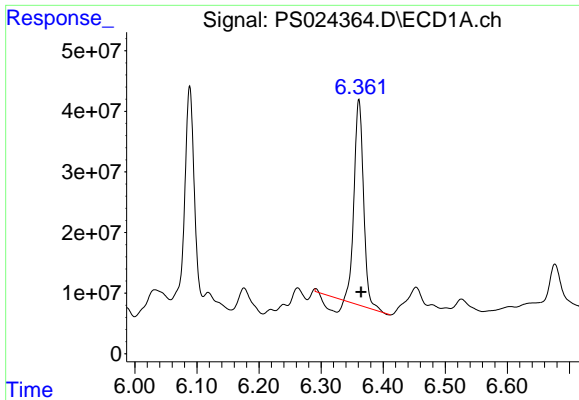
#3 4-Nitrophenol

R.T.: 6.176 min
 Delta R.T.: -0.025 min
 Response: 62600141
 Conc: 50.39 ng/ml



#3 4-Nitrophenol

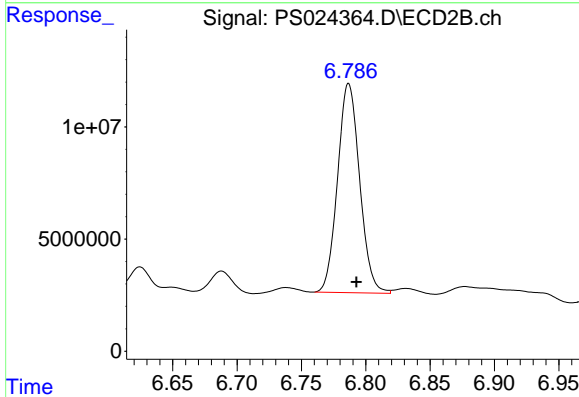
R.T.: 6.376 min
 Delta R.T.: -0.029 min
 Response: 1137864
 Conc: 2.70 ng/ml



#4 2,4-DCAA

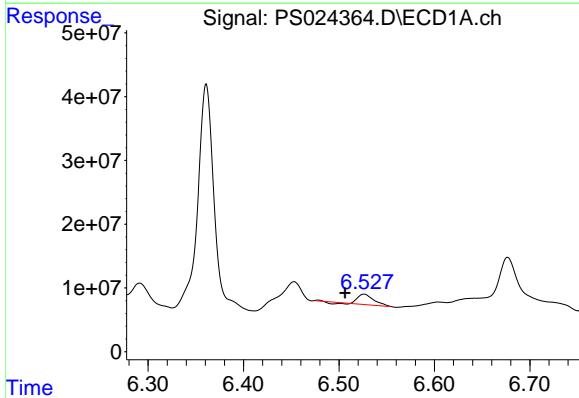
R.T.: 6.361 min
 Delta R.T.: -0.003 min
 Response: 329745969
 Conc: 165.51 ng/ml

Instrument :
 ECD_S
 ClientSampleId :



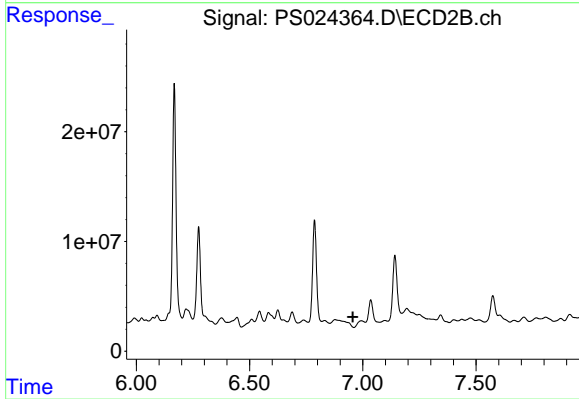
#4 2,4-DCAA

R.T.: 6.787 min
 Delta R.T.: -0.006 min
 Response: 111342205
 Conc: 165.79 ng/ml



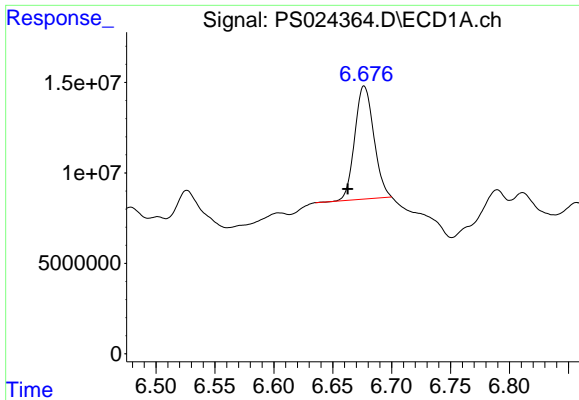
#5 DICAMBA

R.T.: 6.526 min
 Delta R.T.: 0.020 min
 Response: 17397971
 Conc: 2.00 ng/ml



#5 DICAMBA

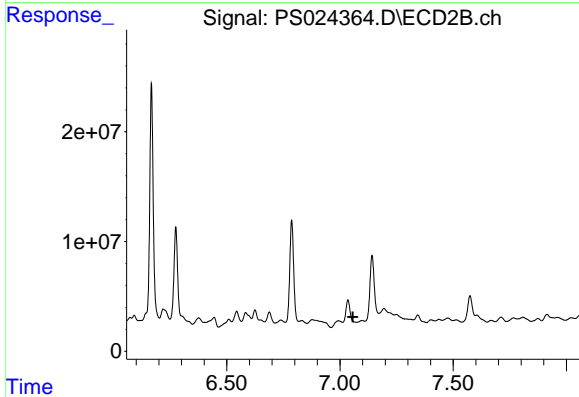
R.T.: 6.994 min
 Delta R.T.: 0.038 min
 Response: -5179611
 Conc: N.D.



#6 MCP

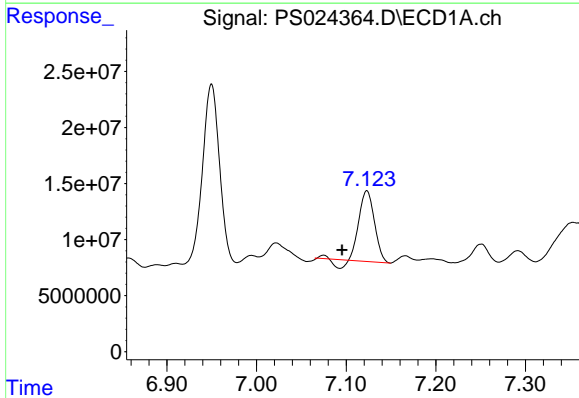
R.T.: 6.677 min
 Delta R.T.: 0.014 min
 Response: 70629707
 Conc: 11.34 ug/ml

Instrument :
 ECD_S
 ClientSampleId :



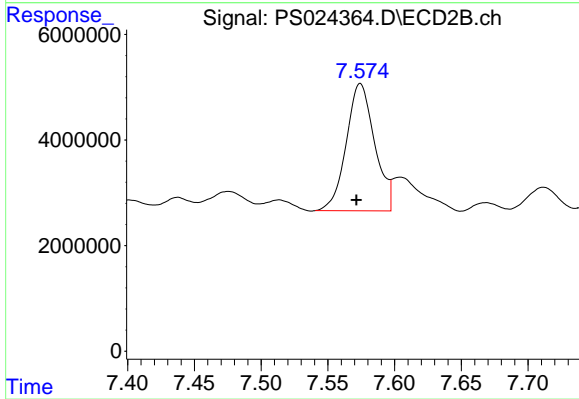
#6 MCP

R.T.: 7.098 min
 Delta R.T.: 0.041 min
 Response: -6890786
 Conc: N.D.



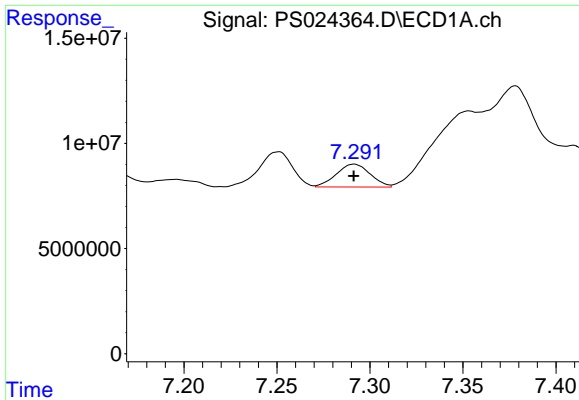
#8 DICHLORPROP

R.T.: 7.123 min
 Delta R.T.: 0.028 min
 Response: 70730537
 Conc: 31.11 ng/ml



#8 DICHLORPROP

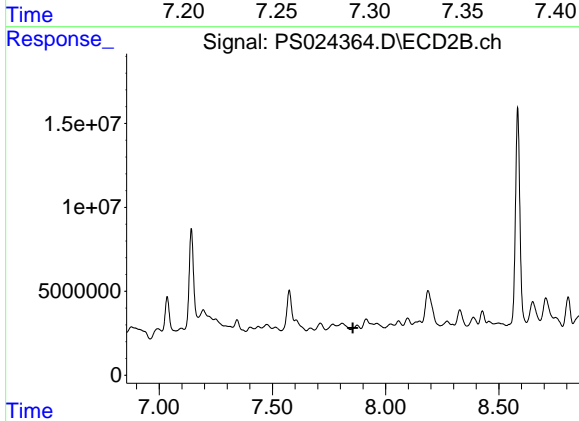
R.T.: 7.574 min
 Delta R.T.: 0.003 min
 Response: 35668974
 Conc: 49.09 ng/ml



#9 2,4-D

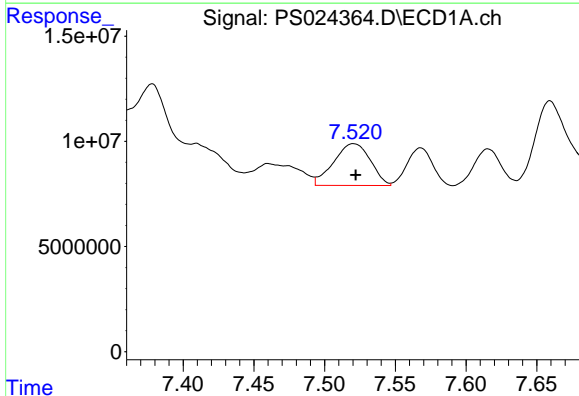
R.T.: 7.292 min
 Delta R.T.: 0.000 min
 Response: 13711326
 Conc: 5.15 ng/ml

Instrument :
 ECD_S
 ClientSampleId :



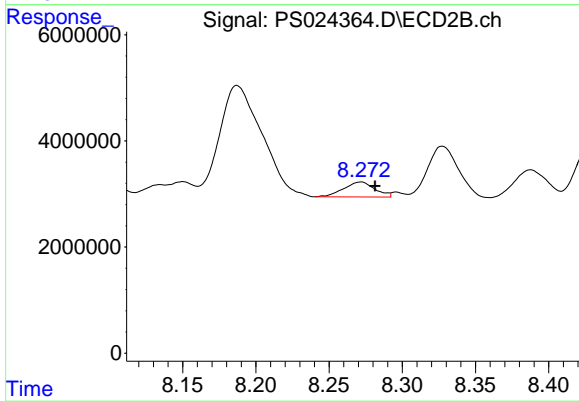
#9 2,4-D

R.T.: 7.874 min
 Delta R.T.: 0.019 min
 Response: -659095
 Conc: N.D.



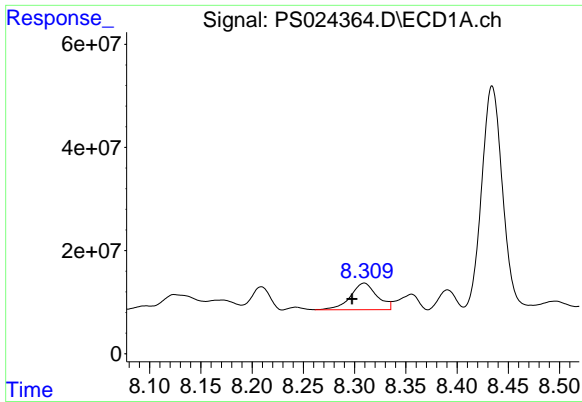
#10 Pentachlorophenol

R.T.: 7.521 min
 Delta R.T.: -0.001 min
 Response: 35906103
 Conc: 1.15 ng/ml



#10 Pentachlorophenol

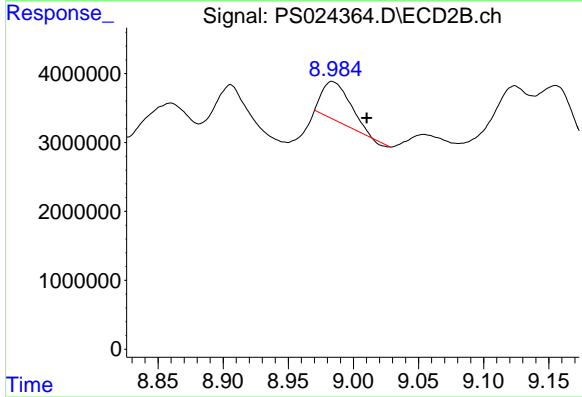
R.T.: 8.272 min
 Delta R.T.: -0.010 min
 Response: 4220833
 Conc: N.D.



#12 2,4,5-T

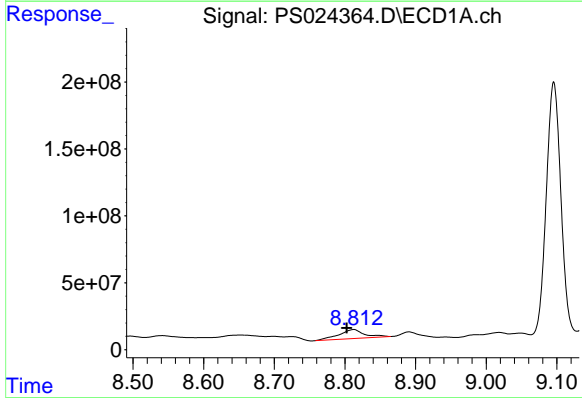
R.T.: 8.309 min
 Delta R.T.: 0.012 min
 Response: 93258187
 Conc: 7.53 ng/ml

Instrument :
 ECD_S
 ClientSampleId :



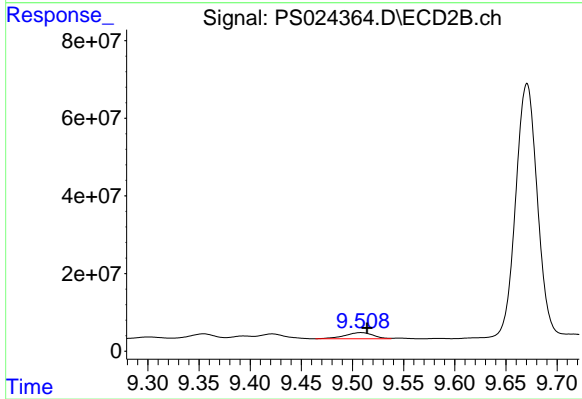
#12 2,4,5-T

R.T.: 8.984 min
 Delta R.T.: -0.026 min
 Response: 8167867
 Conc: 2.04 ng/ml



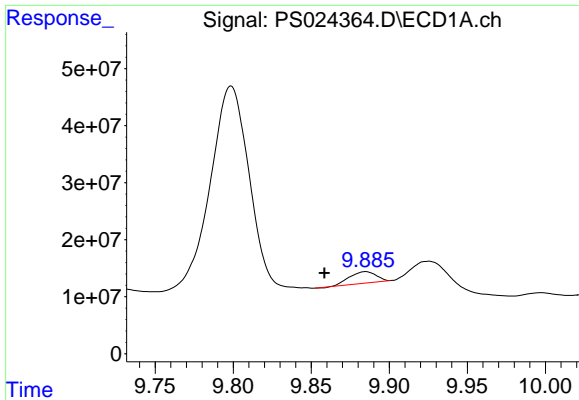
#13 2,4-DB

R.T.: 8.812 min
 Delta R.T.: 0.009 min
 Response: 170527221
 Conc: 79.11 ng/ml



#13 2,4-DB

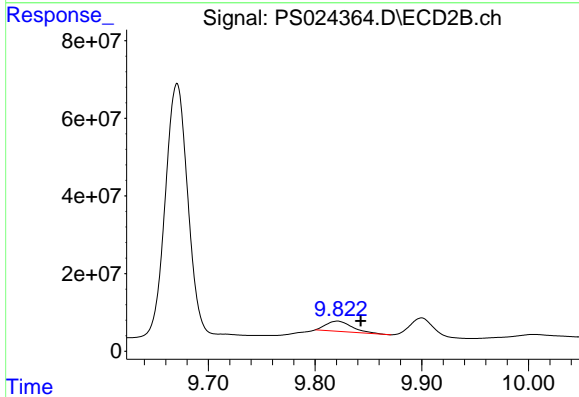
R.T.: 9.508 min
 Delta R.T.: -0.006 min
 Response: 30441123
 Conc: 66.23 ng/ml



#14 DINOSEB

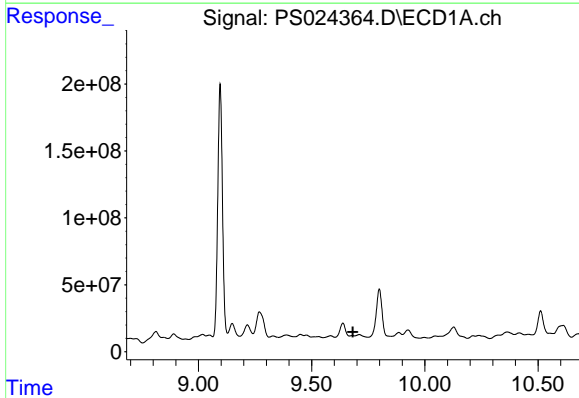
R.T.: 9.885 min
 Delta R.T.: 0.026 min
 Response: 23690068
 Conc: 2.45 ng/ml

Instrument :
 ECD_S
 ClientSampleId :



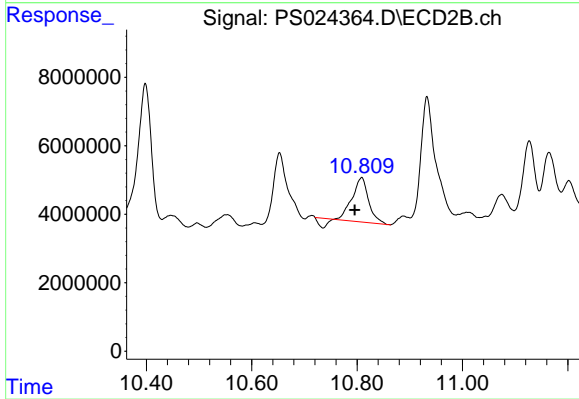
#14 DINOSEB

R.T.: 9.821 min
 Delta R.T.: -0.022 min
 Response: 44622885
 Conc: 14.93 ng/ml



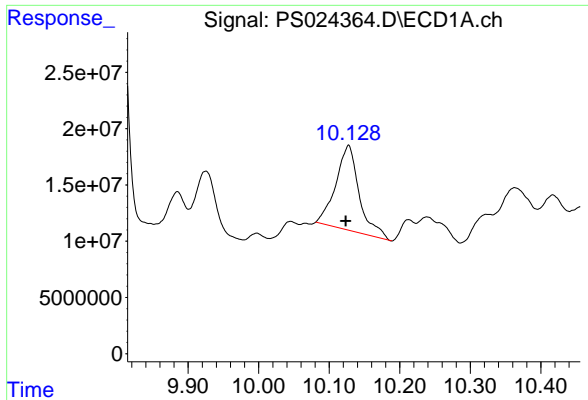
#15 Picloram

R.T.: 9.680 min
 Delta R.T.: -0.002 min
 Response: -46545010
 Conc: N.D.



#15 Picloram

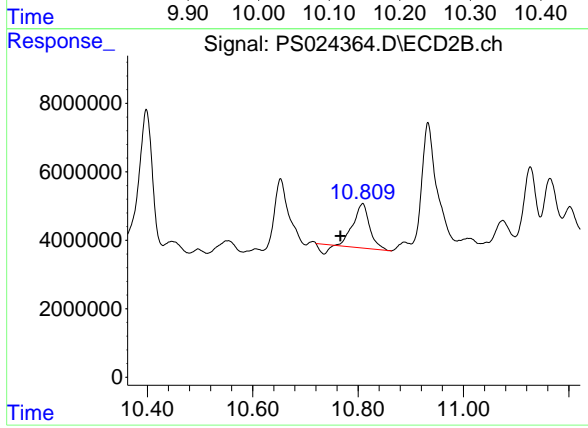
R.T.: 10.809 min
 Delta R.T.: 0.013 min
 Response: 25362548
 Conc: 4.27 ng/ml



#16 DCPA

R.T.: 10.126 min
 Delta R.T.: 0.003 min
 Response: 172939273
 Conc: 10.68 ng/ml

Instrument :
 ECD_S
 ClientSampleId :



#16 DCPA

R.T.: 10.809 min
 Delta R.T.: 0.043 min
 Response: 25362548
 Conc: 4.94 ng/ml