

Data Path : Z:\pestpcbsrv\HPCHEM1\ECD\_S\Data\PS092223\  
 Data File : PS024366.D  
 Signal(s) : Signal #1: ECD1A.ch Signal #2: ECD2B.ch  
 Acq On : 22 Sep 2023 15:05  
 Operator : AR\AJ  
 Sample : HSTDCCC750  
 Misc :  
 ALS Vial : 3 Sample Multiplier: 1

Instrument :  
 ECD\_S  
 ClientSampleId :

Integration File signal 1: autoint1.e  
 Integration File signal 2: autoint2.e  
 Quant Time: Sep 22 15:22:08 2023  
 Quant Method : Z:\pestpcbsrv\HPCHEM1\ECD\_S\Method\PS082823.M  
 Quant Title : 8080.M  
 QLast Update : Mon Aug 28 16:48:10 2023  
 Response via : Initial Calibration  
 Integrator: ChemStation

Volume Inj. : 2 µl  
 Signal #1 Phase : Rtx-CLPesticides Signal #2 Phase: Rtx-CLPesticides2  
 Signal #1 Info : 30M x 0.32mm x0.5 Signal #2 Info : 30M x 0.32mm x 0.25µm

	Compound	RT#1	RT#2	Resp#1	Resp#2	ng/ml	ng/ml
-----							
System Monitoring Compounds							
4) S	2,4-DCAA	6.361	6.787	1477.8E6	499.4E6	741.735	743.537
Target Compounds							
1) T	Dalapon	2.484	2.547	1395.1E6	660.5E6	641.889	626.334
2) T	3,5-DICHL...	5.736	5.971	2105.6E6	729.6E6	692.691	699.689
3) T	4-Nitroph...	6.198	6.400	856.5E6	271.9E6	689.412	644.736
5) T	DICAMBA	6.503	6.949	6209.7E6	2057.9E6	712.349	714.493
6) T	MCP	6.655	7.046	422.3E6	129.8E6	67.817	67.745
7) T	MCPA	6.777	7.253	611.5E6	192.2E6	70.457	65.738
8) T	DICHLORPROP	7.091	7.564	1548.7E6	478.2E6	681.256	658.140
9) T	2,4-D	7.287	7.848	1847.2E6	618.1E6	694.483	693.792
10) T	Pentachlo...	7.517	8.273	22889.9E6	7630.4E6	731.949	720.208
11) T	2,4,5-TP ...	8.038	8.631	9553.2E6	2939.3E6	714.696	708.400
12) T	2,4,5-T	8.293	9.001	8910.7E6	2856.0E6	719.179	711.684
13) T	2,4-DB	8.798	9.505	1497.3E6	358.0E6	694.582	778.997
14) T	DINOSEB	9.851	9.833	6819.7E6	2092.5E6	705.791	700.011
15) T	Picloram	9.675	10.786	11249.3E6	4039.1E6	688.826	680.126
16) T	DCPA	10.117	10.755	11619.2E6	3746.2E6	717.500	730.254
-----							

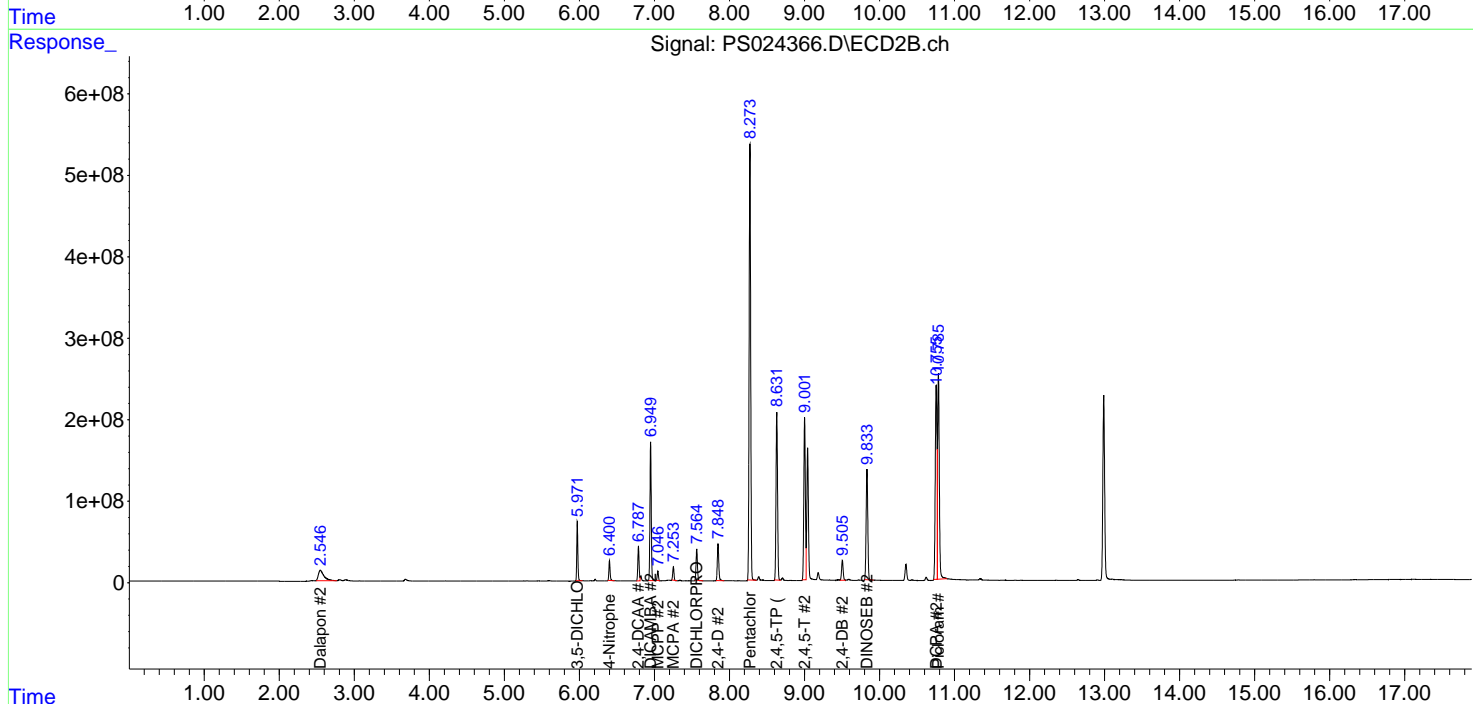
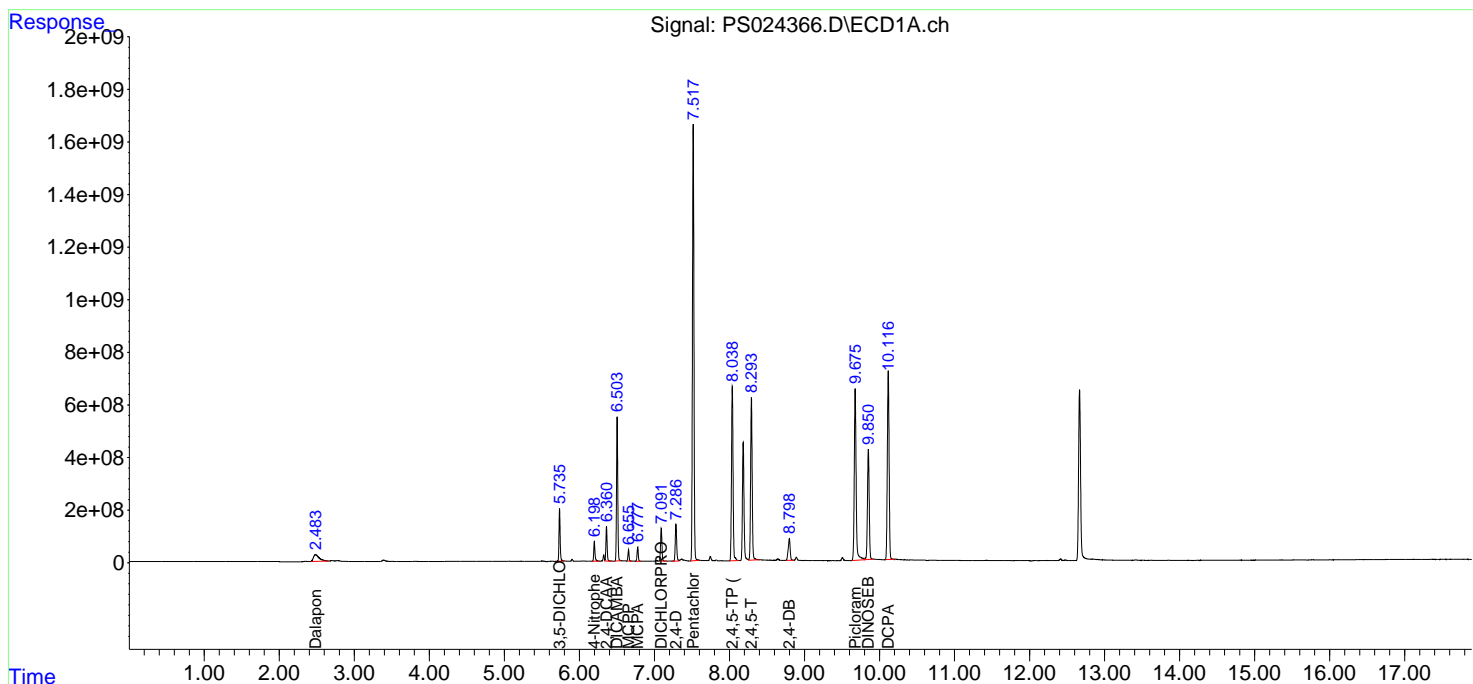
(f)=RT Delta > 1/2 Window (#)=Amounts differ by > 25% (m)=manual int.

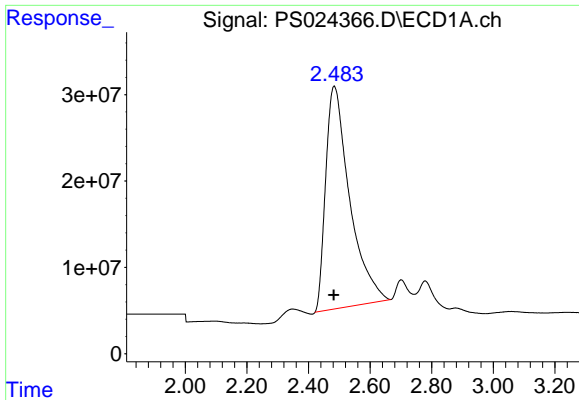
Data Path : Z:\pestpcbsrv\HPCHEM1\ECD\_S\Data\PS092223\  
 Data File : PS024366.D  
 Signal(s) : Signal #1: ECD1A.ch Signal #2: ECD2B.ch  
 Acq On : 22 Sep 2023 15:05  
 Operator : AR\AJ  
 Sample : HSTDCCC750  
 Misc :  
 ALS Vial : 3 Sample Multiplier: 1

Instrument :  
 ECD\_S  
 ClientSampleId :

Integration File signal 1: autoint1.e  
 Integration File signal 2: autoint2.e  
 Quant Time: Sep 22 15:22:08 2023  
 Quant Method : Z:\pestpcbsrv\HPCHEM1\ECD\_S\Method\PS082823.M  
 Quant Title : 8080.M  
 QLast Update : Mon Aug 28 16:48:10 2023  
 Response via : Initial Calibration  
 Integrator: ChemStation

Volume Inj. : 2 µl  
 Signal #1 Phase : Rtx-CLPesticides Signal #2 Phase: Rtx-CLPesticides2  
 Signal #1 Info : 30M x 0.32mm x 0.5 Signal #2 Info : 30M x 0.32mm x 0.25µm

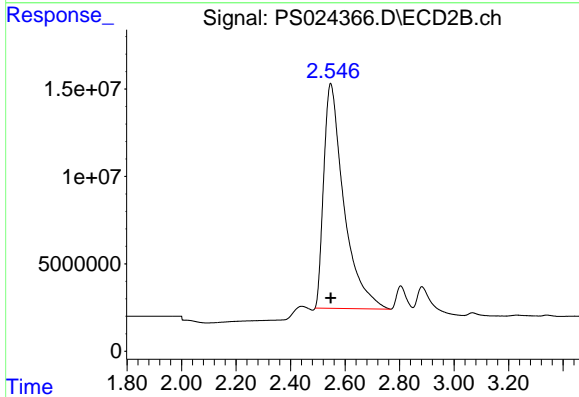




#1 Dalapon

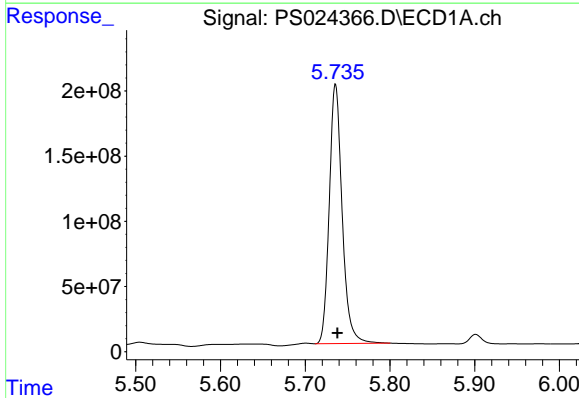
R.T.: 2.484 min  
 Delta R.T.: 0.002 min  
 Response: 1395145811  
 Conc: 641.89 ng/ml

Instrument :  
 ECD\_S  
 ClientSampleId :



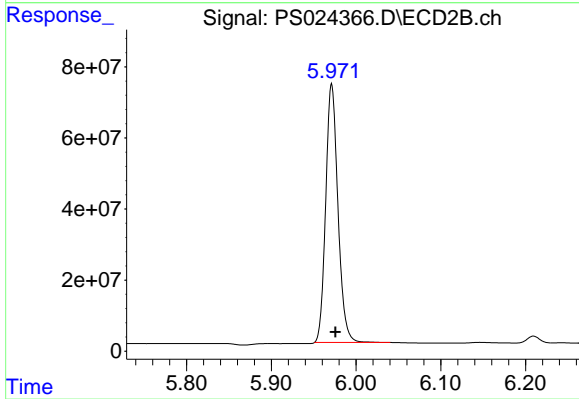
#1 Dalapon

R.T.: 2.547 min  
 Delta R.T.: 0.000 min  
 Response: 660474082  
 Conc: 626.33 ng/ml



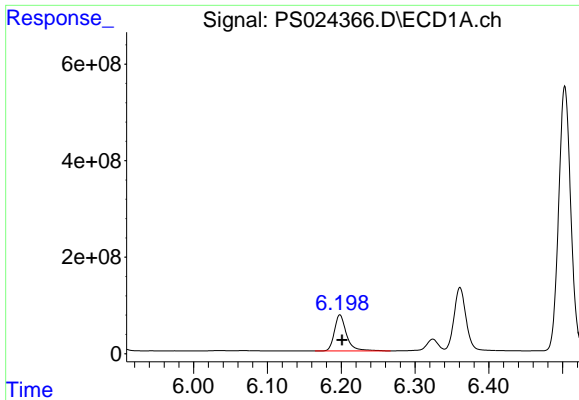
#2 3,5-DICHLOROBENZOIC ACID

R.T.: 5.736 min  
 Delta R.T.: -0.002 min  
 Response: 2105623321  
 Conc: 692.69 ng/ml



#2 3,5-DICHLOROBENZOIC ACID

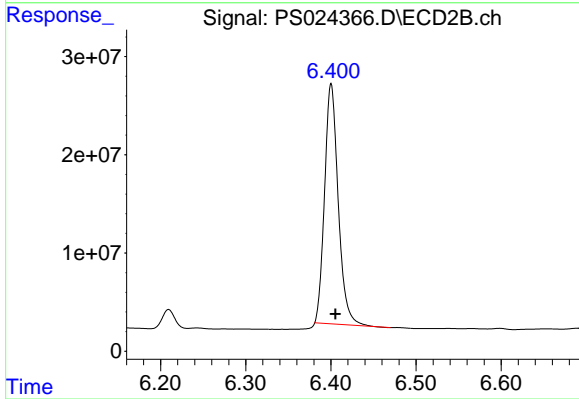
R.T.: 5.971 min  
 Delta R.T.: -0.004 min  
 Response: 729559452  
 Conc: 699.69 ng/ml



#3 4-Nitrophenol

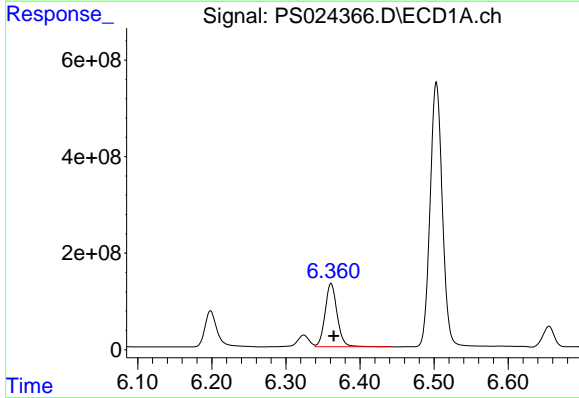
R.T.: 6.198 min  
Delta R.T.: -0.003 min  
Response: 856502762  
Conc: 689.41 ng/ml

Instrument :  
ECD\_S  
ClientSampleId :



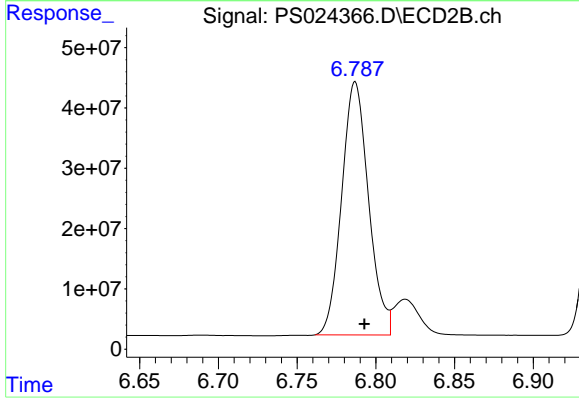
#3 4-Nitrophenol

R.T.: 6.400 min  
Delta R.T.: -0.005 min  
Response: 271909435  
Conc: 644.74 ng/ml



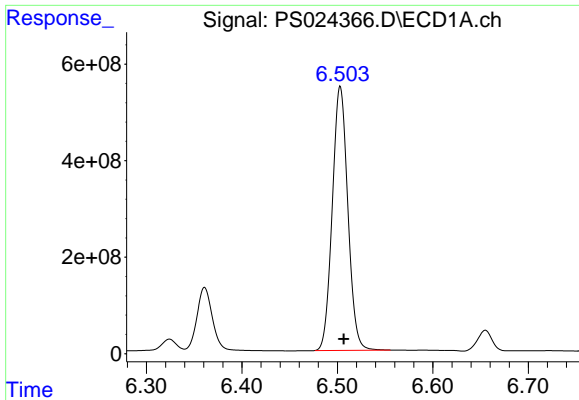
#4 2,4-DCAA

R.T.: 6.361 min  
Delta R.T.: -0.003 min  
Response: 1477774182  
Conc: 741.74 ng/ml



#4 2,4-DCAA

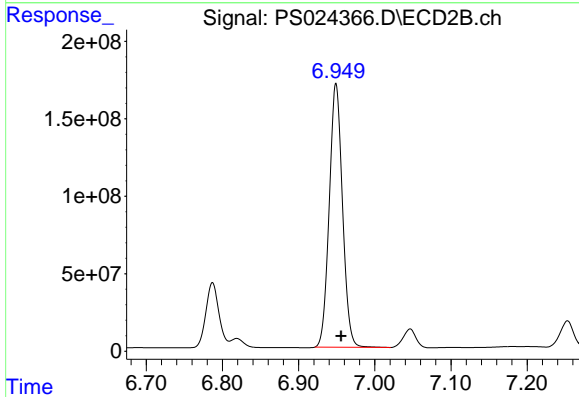
R.T.: 6.787 min  
Delta R.T.: -0.006 min  
Response: 499353621  
Conc: 743.54 ng/ml



#5 DICAMBA

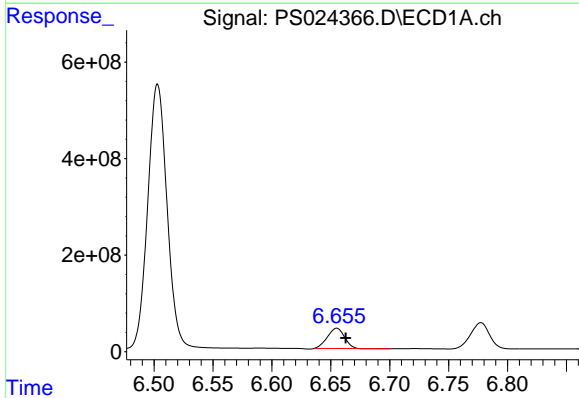
R.T.: 6.503 min  
 Delta R.T.: -0.004 min  
 Response: 6209671999  
 Conc: 712.35 ng/ml

Instrument :  
 ECD\_S  
 ClientSampleId :



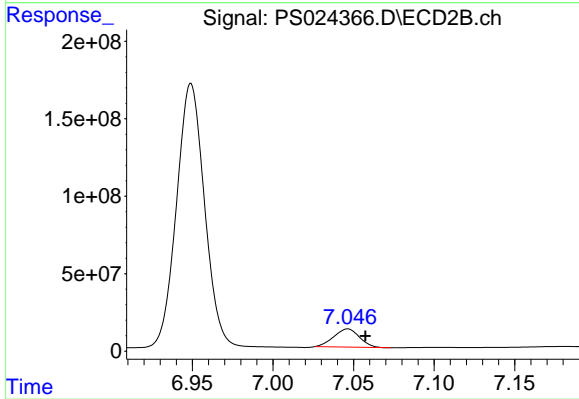
#5 DICAMBA

R.T.: 6.949 min  
 Delta R.T.: -0.007 min  
 Response: 2057854250  
 Conc: 714.49 ng/ml



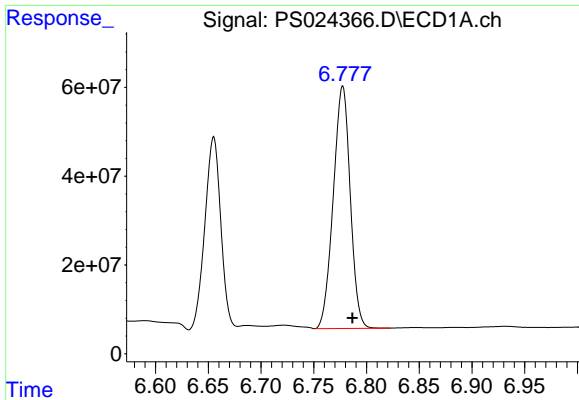
#6 MCP

R.T.: 6.655 min  
 Delta R.T.: -0.008 min  
 Response: 422303605  
 Conc: 67.82 ug/ml



#6 MCP

R.T.: 7.046 min  
 Delta R.T.: -0.011 min  
 Response: 129776372  
 Conc: 67.74 ug/ml

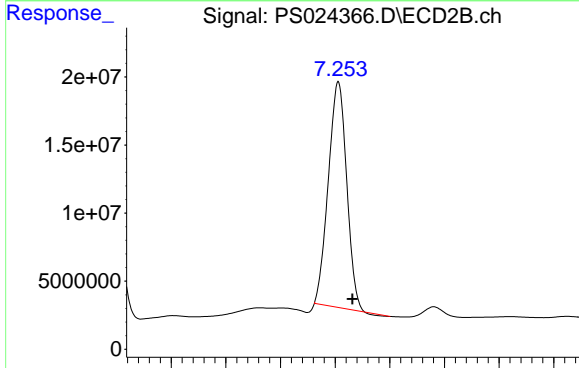


#7 MCPA

R.T.: 6.777 min  
 Delta R.T.: -0.009 min  
 Response: 611536048  
 Conc: 70.46 ug/ml

Instrument :  
 ECD\_S  
 ClientSampleId :

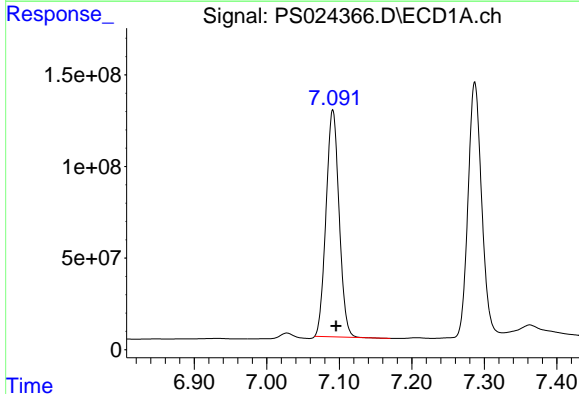
Time 6.60 6.65 6.70 6.75 6.80 6.85 6.90 6.95



#7 MCPA

R.T.: 7.253 min  
 Delta R.T.: -0.013 min  
 Response: 192156502  
 Conc: 65.74 ug/ml

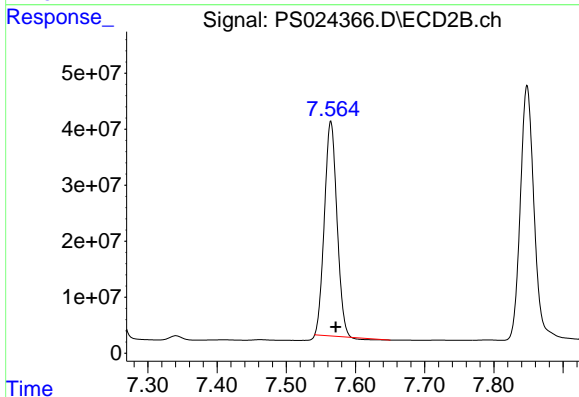
Time 7.10 7.15 7.20 7.25 7.30 7.35 7.40 7.45



#8 DICHLORPROP

R.T.: 7.091 min  
 Delta R.T.: -0.004 min  
 Response: 1548732027  
 Conc: 681.26 ng/ml

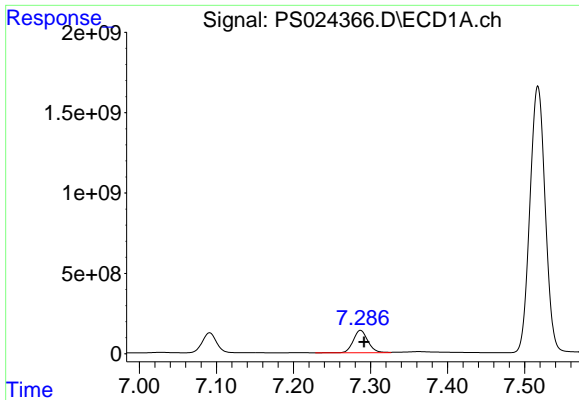
Time 6.90 7.00 7.10 7.20 7.30 7.40



#8 DICHLORPROP

R.T.: 7.564 min  
 Delta R.T.: -0.007 min  
 Response: 478184283  
 Conc: 658.14 ng/ml

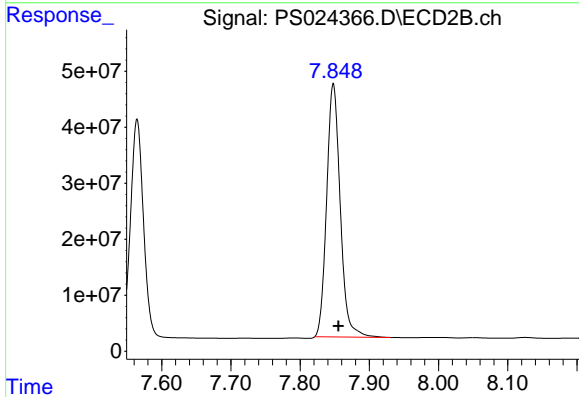
Time 7.30 7.40 7.50 7.60 7.70 7.80



#9 2,4-D

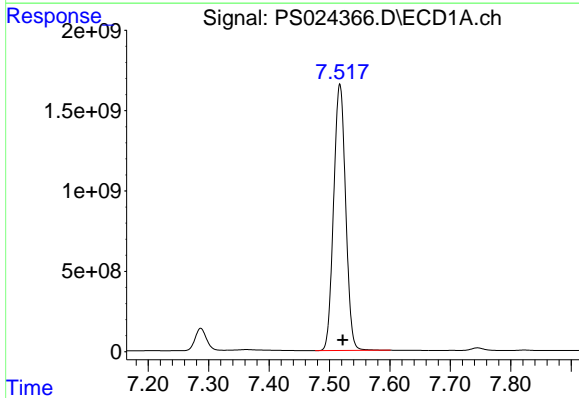
R.T.: 7.287 min  
 Delta R.T.: -0.004 min  
 Response: 1847242639  
 Conc: 694.48 ng/ml

Instrument :  
 ECD\_S  
 ClientSampleId :



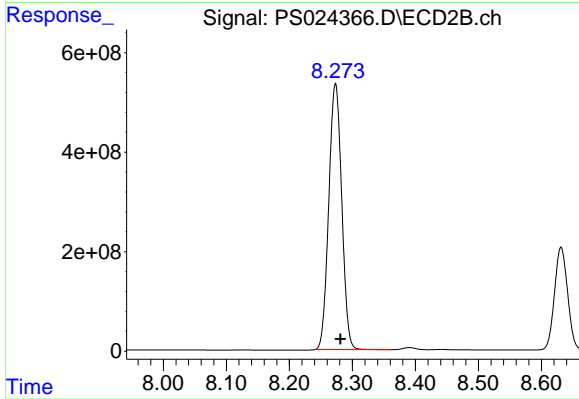
#9 2,4-D

R.T.: 7.848 min  
 Delta R.T.: -0.007 min  
 Response: 618089073  
 Conc: 693.79 ng/ml



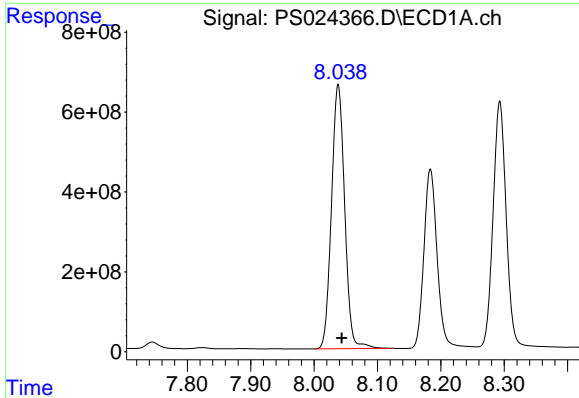
#10 Pentachlorophenol

R.T.: 7.517 min  
 Delta R.T.: -0.005 min  
 Response: 22889945272  
 Conc: 731.95 ng/ml



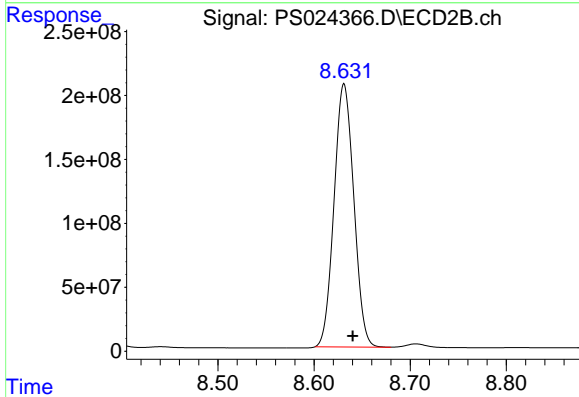
#10 Pentachlorophenol

R.T.: 8.273 min  
 Delta R.T.: -0.008 min  
 Response: 7630379701  
 Conc: 720.21 ng/ml

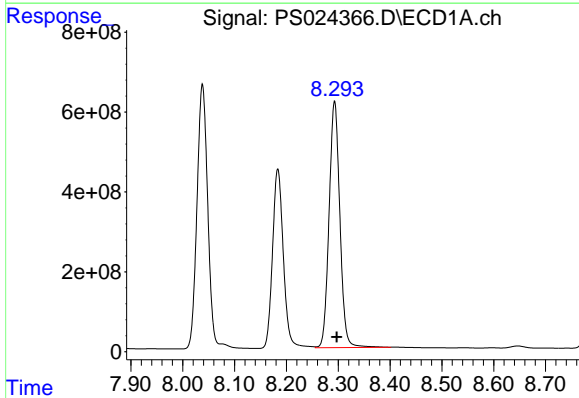


#11 2,4,5-TP (SILVEX)  
 R.T.: 8.038 min  
 Delta R.T.: -0.005 min  
 Response: 9553181774  
 Conc: 714.70 ng/ml

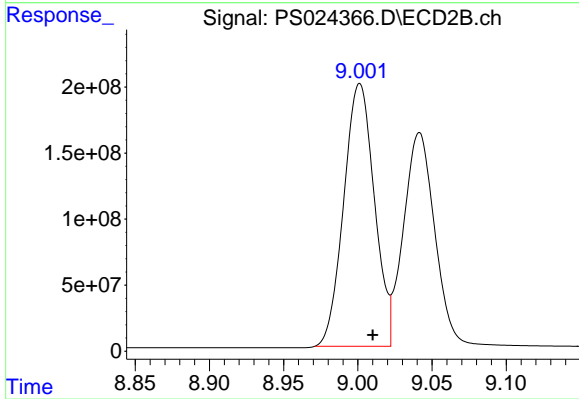
Instrument :  
 ECD\_S  
 ClientSampleId :



#11 2,4,5-TP (SILVEX)  
 R.T.: 8.631 min  
 Delta R.T.: -0.009 min  
 Response: 2939309997  
 Conc: 708.40 ng/ml

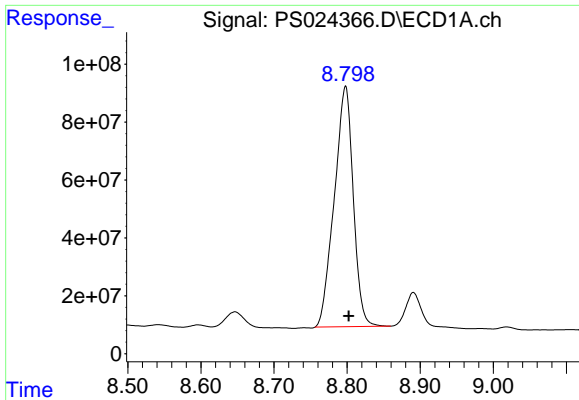


#12 2,4,5-T  
 R.T.: 8.293 min  
 Delta R.T.: -0.005 min  
 Response: 8910655692  
 Conc: 719.18 ng/ml



#12 2,4,5-T  
 R.T.: 9.001 min  
 Delta R.T.: -0.009 min  
 Response: 2856030355  
 Conc: 711.68 ng/ml

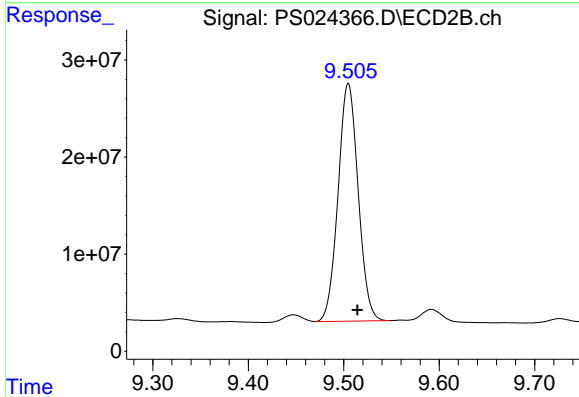




#13 2,4-DB

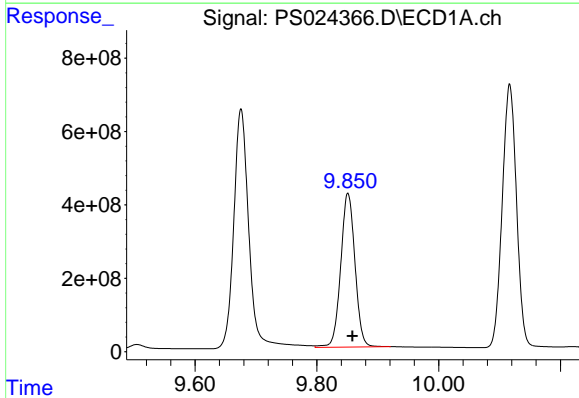
R.T.: 8.798 min  
 Delta R.T.: -0.005 min  
 Response: 1497271304  
 Conc: 694.58 ng/ml

Instrument :  
 ECD\_S  
 ClientSampleId :



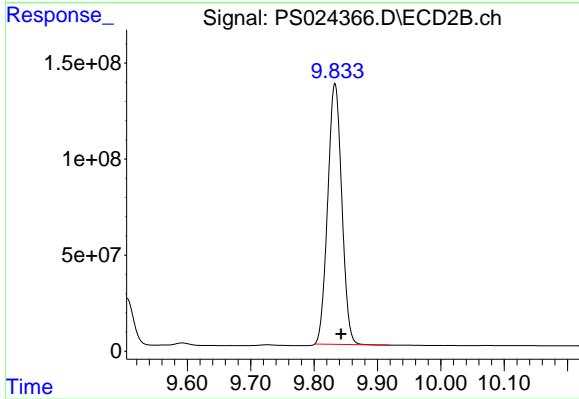
#13 2,4-DB

R.T.: 9.505 min  
 Delta R.T.: -0.009 min  
 Response: 358039024  
 Conc: 779.00 ng/ml



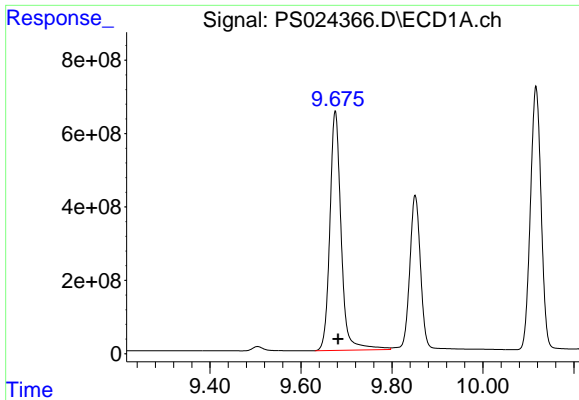
#14 DINOSEB

R.T.: 9.851 min  
 Delta R.T.: -0.007 min  
 Response: 6819666206  
 Conc: 705.79 ng/ml



#14 DINOSEB

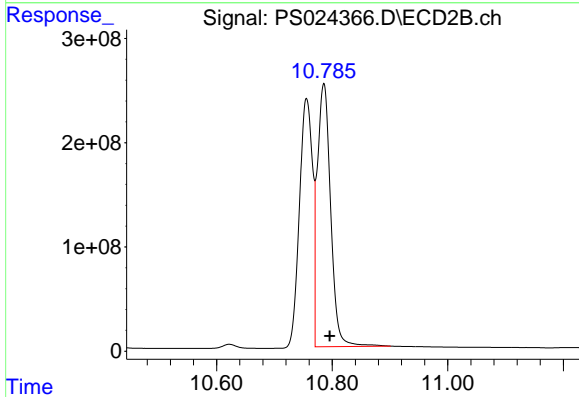
R.T.: 9.833 min  
 Delta R.T.: -0.010 min  
 Response: 2092544554  
 Conc: 700.01 ng/ml



#15 Picloram

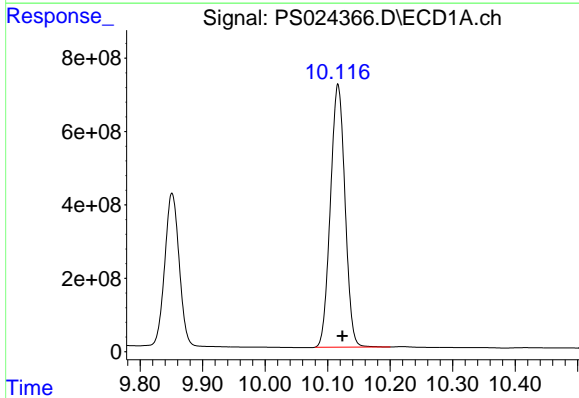
R.T.: 9.675 min  
 Delta R.T.: -0.006 min  
 Response: 11249348926  
 Conc: 688.83 ng/ml

Instrument :  
 ECD\_S  
 ClientSampleId :



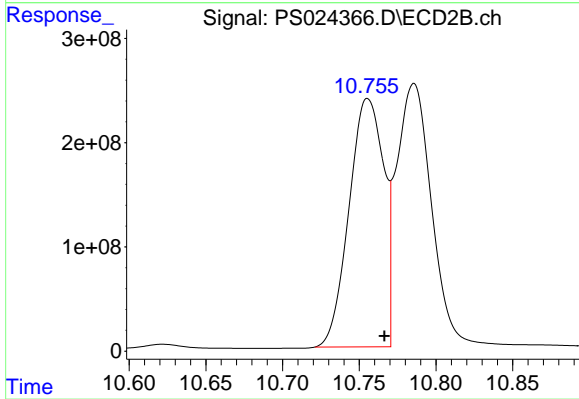
#15 Picloram

R.T.: 10.786 min  
 Delta R.T.: -0.010 min  
 Response: 4039118961  
 Conc: 680.13 ng/ml



#16 DCPA

R.T.: 10.117 min  
 Delta R.T.: -0.007 min  
 Response: 11619154024  
 Conc: 717.50 ng/ml



#16 DCPA

R.T.: 10.755 min  
 Delta R.T.: -0.011 min  
 Response: 3746175430  
 Conc: 730.25 ng/ml