

Data Path : Z:\pestpcbsrv\HPCHEM1\ECD\_S\Data\PS092320\  
 Data File : PS012447.D  
 Signal(s) : Signal #1: ECD1A.ch Signal #2: ECD2B.ch  
 Acq On : 23 Sep 2020 11:23  
 Operator : DD\AJ  
 Sample : L3866-10  
 Misc :  
 ALS Vial : 9 Sample Multiplier: 1

Instrument :  
 ECD\_S  
 ClientSampleId :

Integration File signal 1: autoint1.e  
 Integration File signal 2: autoint2.e  
 Quant Time: Sep 23 14:03:38 2020  
 Quant Method : Z:\pestpcbsrv\HPCHEM1\ECD\_S\Method\PS092220.M  
 Quant Title : 8080.M  
 QLast Update : Wed Sep 23 04:57:25 2020  
 Response via : Initial Calibration  
 Integrator: ChemStation

Volume Inj. : 2 µl  
 Signal #1 Phase : Rtx-CLPesticides Signal #2 Phase: Rtx-CLPesticides2  
 Signal #1 Info : 30M x 0.32mm x0.5 Signal #2 Info : 30M x 0.32mm x 0.25µm

Compound	RT#1	RT#2	Resp#1	Resp#2	ng/ml	ng/ml
System Monitoring Compounds						
4) S 2,4-DCAA	7.217	6.913	340.3E6	183.7E6	347.440	399.290
Target Compounds						
1) T Dalapon	2.995	2.589	72086557	177.6E6	63.436	296.947 #
2) T 3,5-DICHL...	0.000	6.043	0	2003738	N.D.	2.810
3) T 4-Nitroph...	7.103	0.000	8394585	0	17.263	N.D. #
5) T DICAMBA	7.393	7.047	9797585	9229010	2.540	4.840 #
6) T MCPP	7.627	0.000	9757820	0	3.344	N.D. #
7) T MCPA	7.701	0.000	193.4E6	0	46.376	N.D. #
8) T DICHLORPROP	0.000	7.742	0	6935666	N.D.	13.433
9) T 2,4-D	8.397	7.974	67007864	5539765	59.016	8.846 #
10) T Pentachlo...	8.692	0.000	13518250	0	<MDL	N.D. #
11) T 2,4,5-TP ...	0.000	8.742	0	29206550	N.D.	11.070
12) T 2,4,5-T	9.407	0.000	73183998	0	13.019	N.D. #
13) T 2,4-DB	0.000	9.681	0	142551	N.D.	<MDL
14) T DINOSEB	0.000	10.074	0	7564810	N.D.	3.949
15) T Picloram	11.000	0.000	22789298	0	3.165	N.D. #

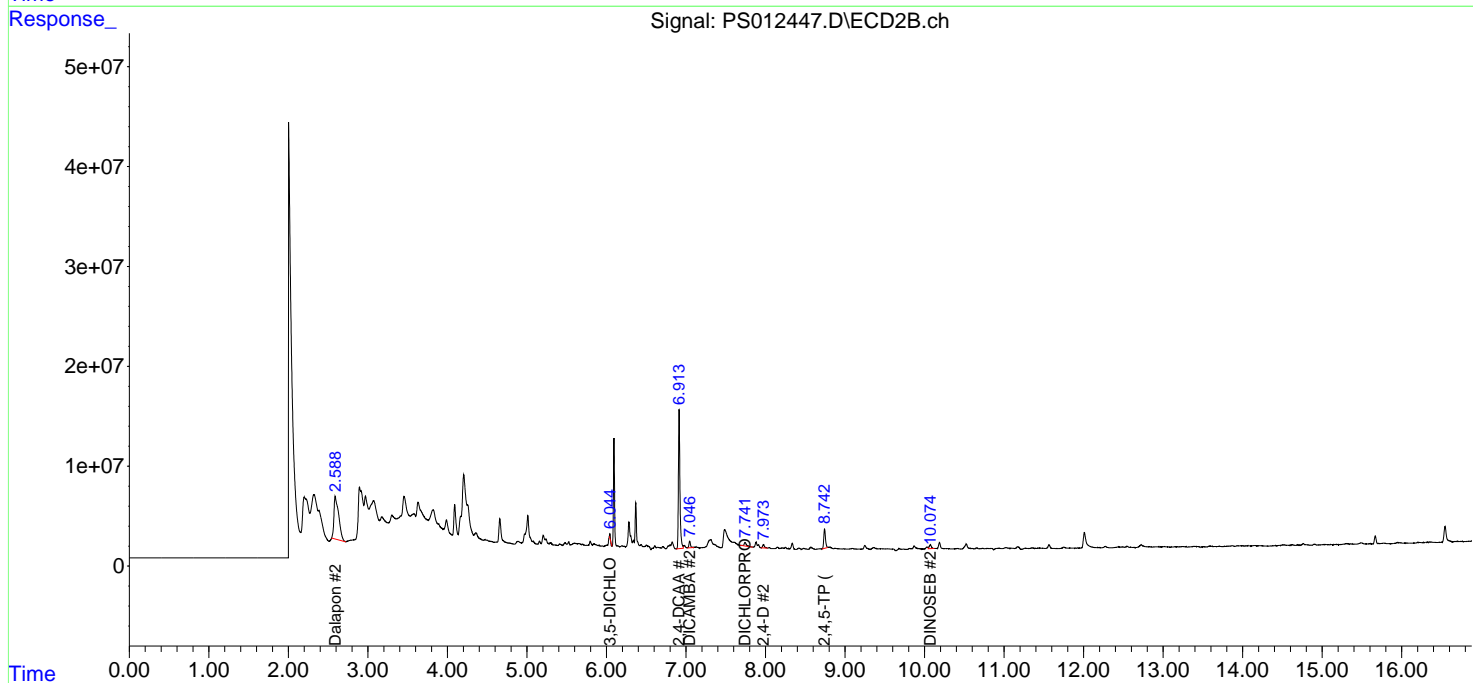
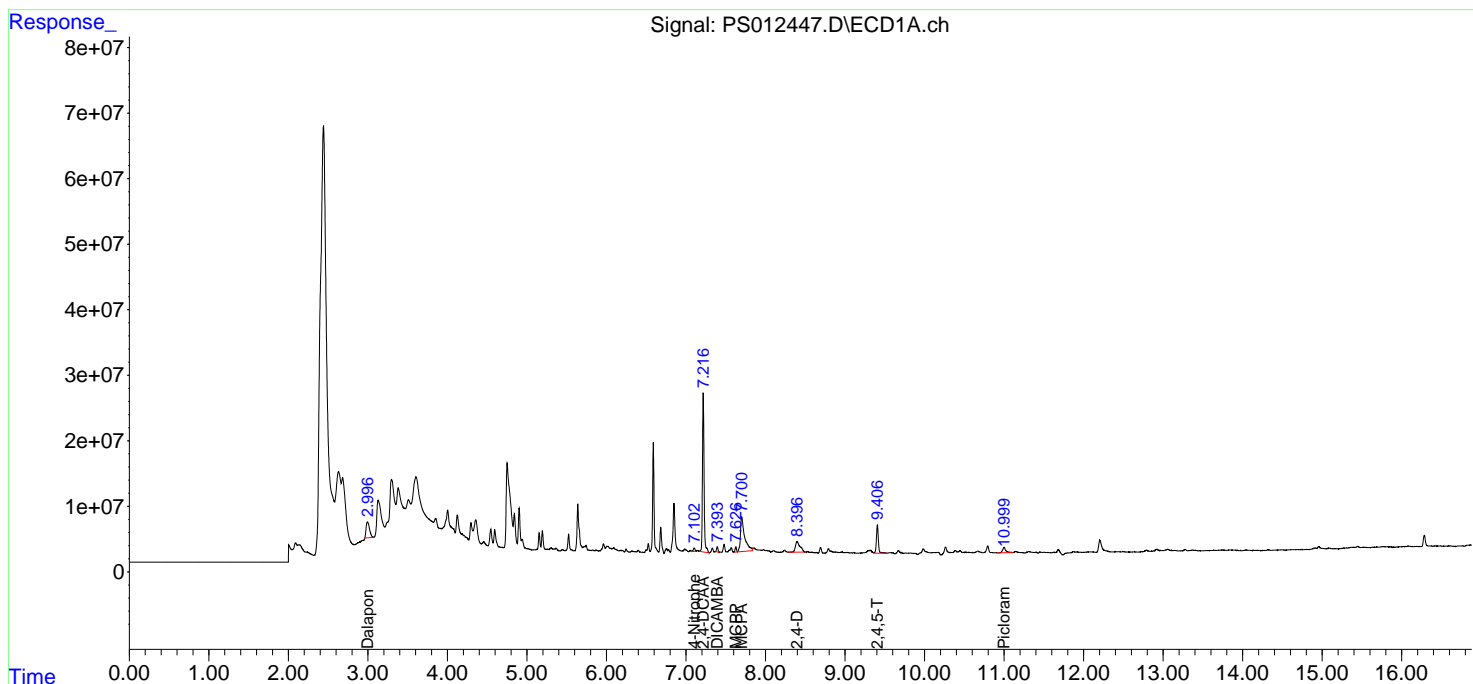
(f)=RT Delta > 1/2 Window (#)=Amounts differ by > 25% (m)=manual int.

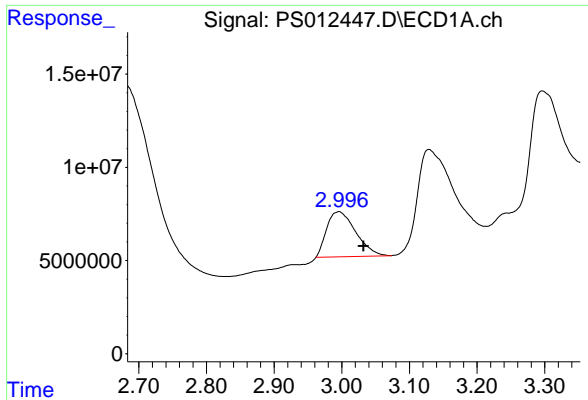
Data Path : Z:\pestpcbsrv\HPCHEM1\ECD\_S\Data\PS092320\  
 Data File : PS012447.D  
 Signal(s) : Signal #1: ECD1A.ch Signal #2: ECD2B.ch  
 Acq On : 23 Sep 2020 11:23  
 Operator : DD\AJ  
 Sample : L3866-10  
 Misc :  
 ALS Vial : 9 Sample Multiplier: 1

Instrument :  
 ECD\_S  
 ClientSampled :

Integration File signal 1: autoint1.e  
 Integration File signal 2: autoint2.e  
 Quant Time: Sep 23 14:03:38 2020  
 Quant Method : Z:\pestpcbsrv\HPCHEM1\ECD\_S\Method\PS092220.M  
 Quant Title : 8080.M  
 QLast Update : Wed Sep 23 04:57:25 2020  
 Response via : Initial Calibration  
 Integrator: ChemStation

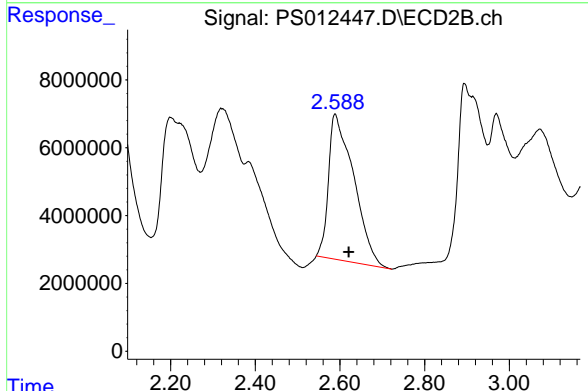
Volume Inj. : 2 µl  
 Signal #1 Phase : Rtx-CLPesticides Signal #2 Phase: Rtx-CLPesticides2  
 Signal #1 Info : 30M x 0.32mm x0.5 Signal #2 Info : 30M x 0.32mm x 0.25µm



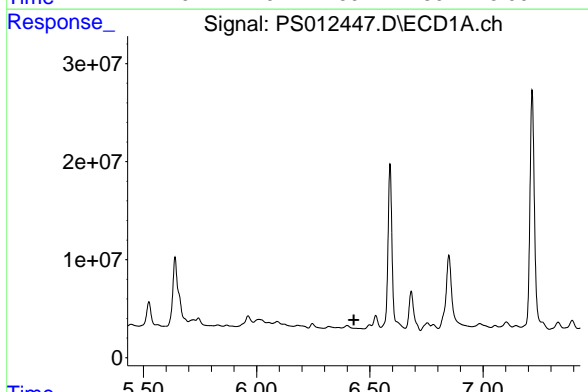


#1 Dalapon  
 R.T.: 2.995 min  
 Delta R.T.: -0.037 min  
 Response: 72086557  
 Conc: 63.44 ng/ml

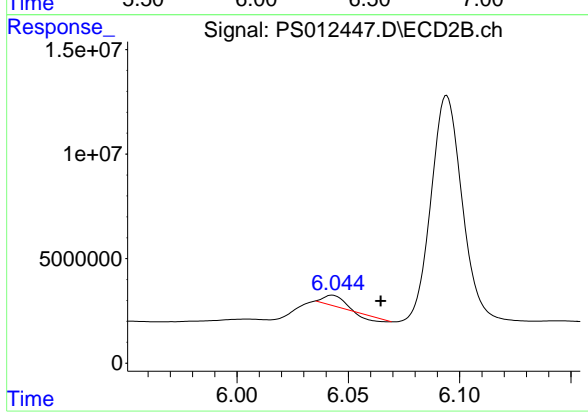
Instrument :  
 ECD\_S  
 ClientSampled :



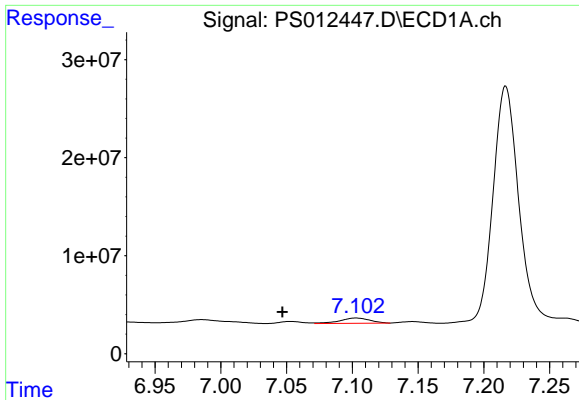
#1 Dalapon  
 R.T.: 2.589 min  
 Delta R.T.: -0.032 min  
 Response: 177630726  
 Conc: 296.95 ng/ml



#2 3,5-DICHLOROBENZOIC ACID  
 R.T.: 0.000 min  
 Exp R.T. : 6.430 min  
 Response: 0  
 Conc: N.D.

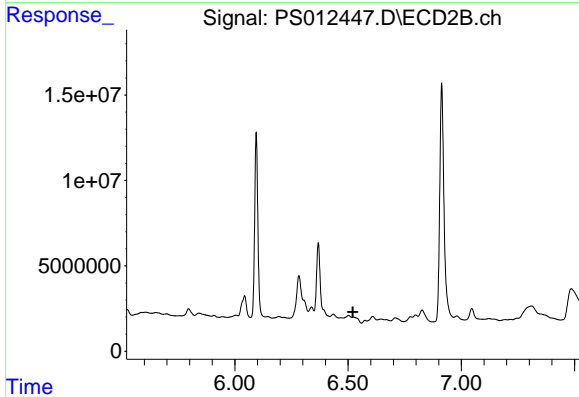


#2 3,5-DICHLOROBENZOIC ACID  
 R.T.: 6.043 min  
 Delta R.T.: -0.022 min  
 Response: 2003738  
 Conc: 2.81 ng/ml

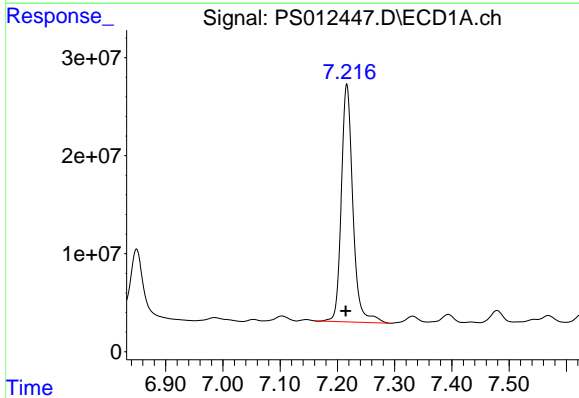


#3 4-Nitrophenol  
 R.T.: 7.103 min  
 Delta R.T.: 0.056 min  
 Response: 8394585  
 Conc: 17.26 ng/ml

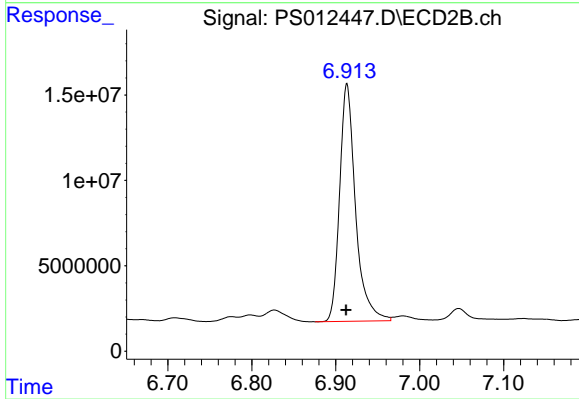
Instrument :  
 ECD\_S  
 ClientSampled :



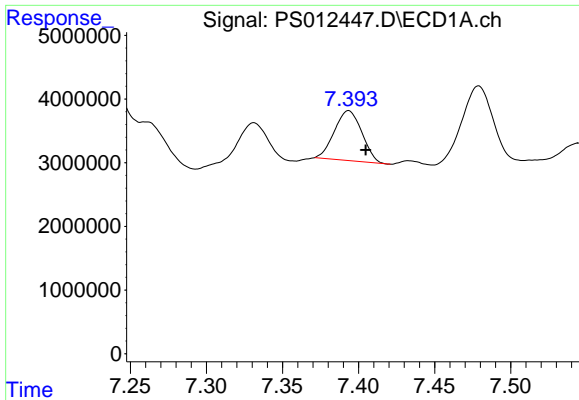
#3 4-Nitrophenol  
 R.T.: 0.000 min  
 Exp R.T. : 6.522 min  
 Response: 0  
 Conc: N.D.



#4 2,4-DCAA  
 R.T.: 7.217 min  
 Delta R.T.: 0.002 min  
 Response: 340299586  
 Conc: 347.44 ng/ml



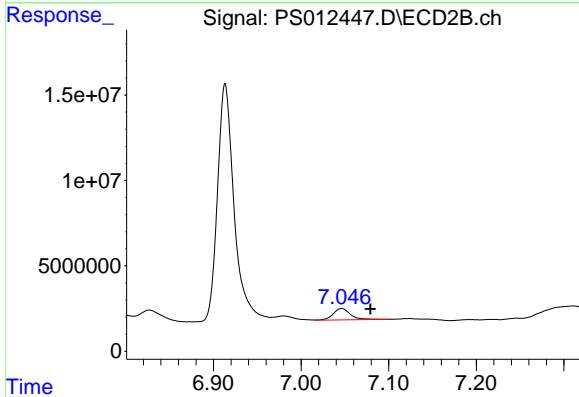
#4 2,4-DCAA  
 R.T.: 6.913 min  
 Delta R.T.: 0.001 min  
 Response: 183680104  
 Conc: 399.29 ng/ml



#5 DICAMBA

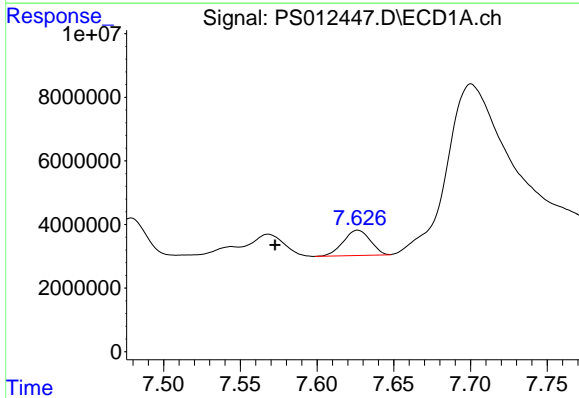
R.T.: 7.393 min  
 Delta R.T.: -0.011 min  
 Response: 9797585  
 Conc: 2.54 ng/ml

Instrument :  
 ECD\_S  
 ClientSampleId :



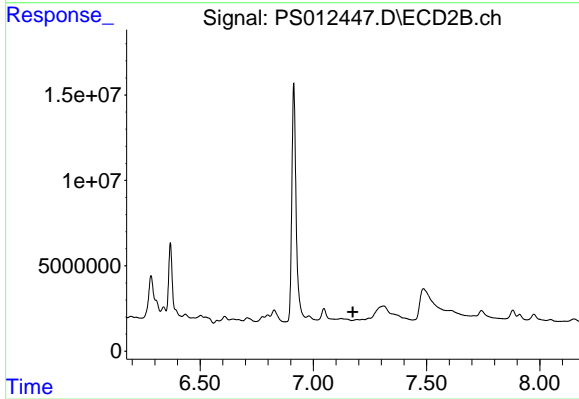
#5 DICAMBA

R.T.: 7.047 min  
 Delta R.T.: -0.033 min  
 Response: 9229010  
 Conc: 4.84 ng/ml



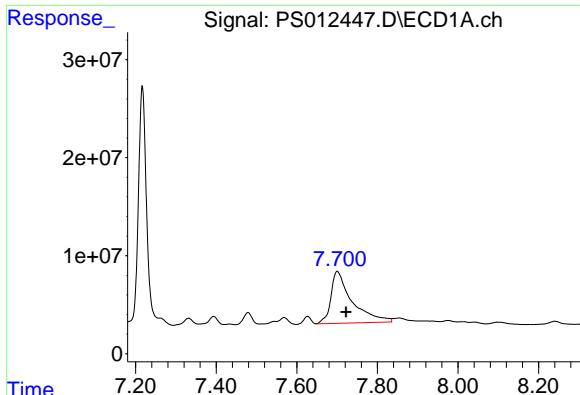
#6 MCPP

R.T.: 7.627 min  
 Delta R.T.: 0.054 min  
 Response: 9757820  
 Conc: 3.34 ug/ml



#6 MCPP

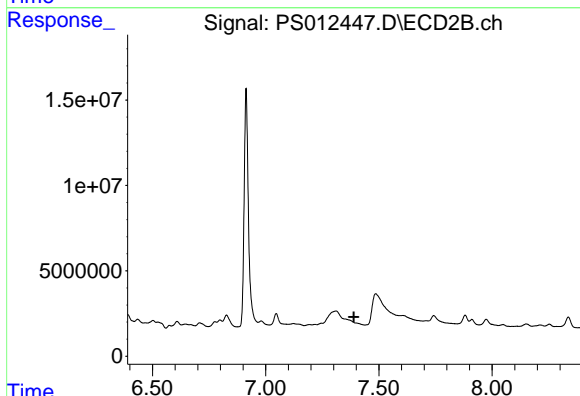
R.T.: 0.000 min  
 Exp R.T. : 7.175 min  
 Response: 0  
 Conc: N.D.



#7 MCPA

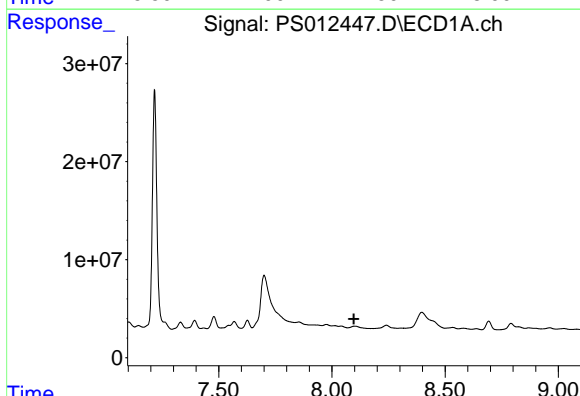
R.T.: 7.701 min  
 Delta R.T.: -0.022 min  
 Response: 193419613  
 Conc: 46.38 ug/ml

Instrument :  
 ECD\_S  
 ClientSampleId :



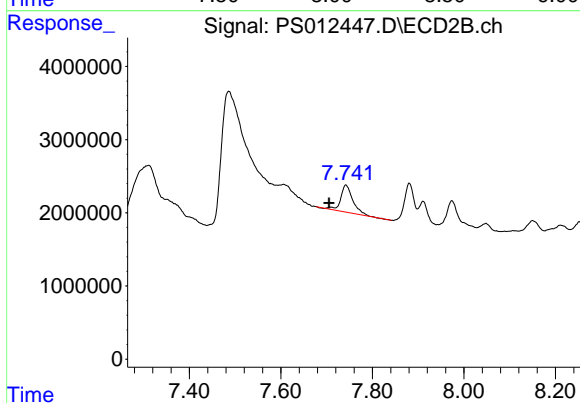
#7 MCPA

R.T.: 0.000 min  
 Exp R.T. : 7.390 min  
 Response: 0  
 Conc: N.D.



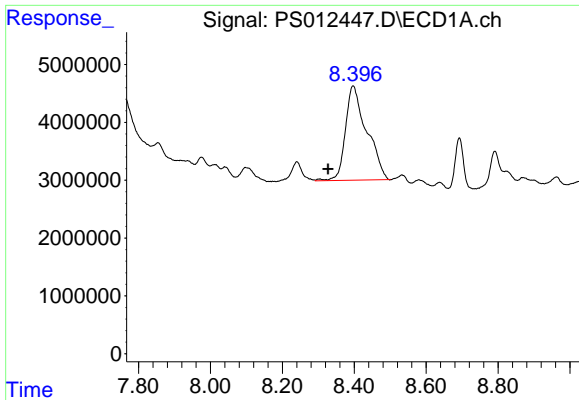
#8 DICHLORPROP

R.T.: 0.000 min  
 Exp R.T. : 8.097 min  
 Response: 0  
 Conc: N.D.



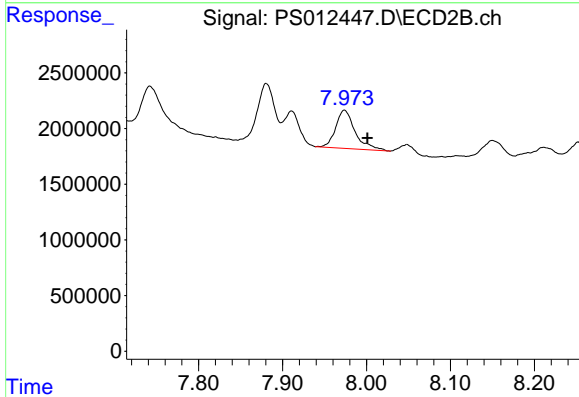
#8 DICHLORPROP

R.T.: 7.742 min  
 Delta R.T.: 0.037 min  
 Response: 6935666  
 Conc: 13.43 ng/ml

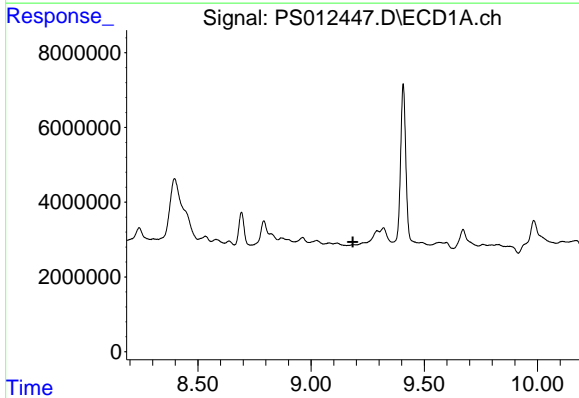


#9 2,4-D  
 R.T.: 8.397 min  
 Delta R.T.: 0.069 min  
 Response: 67007864  
 Conc: 59.02 ng/ml

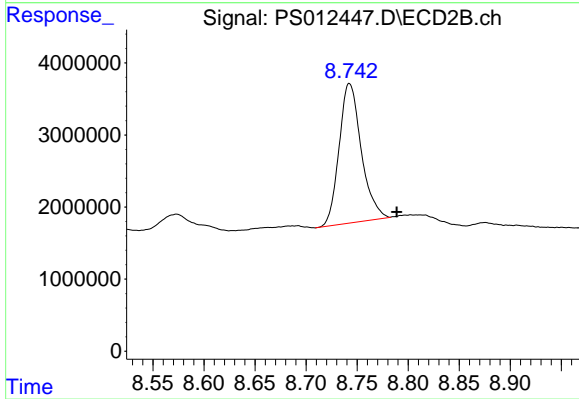
Instrument :  
 ECD\_S  
 ClientSampleId :



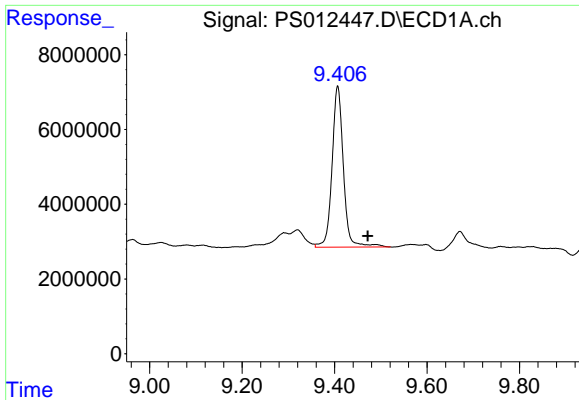
#9 2,4-D  
 R.T.: 7.974 min  
 Delta R.T.: -0.027 min  
 Response: 5539765  
 Conc: 8.85 ng/ml



#11 2,4,5-TP (SILVEX)  
 R.T.: 0.000 min  
 Exp R.T. : 9.185 min  
 Response: 0  
 Conc: N.D.

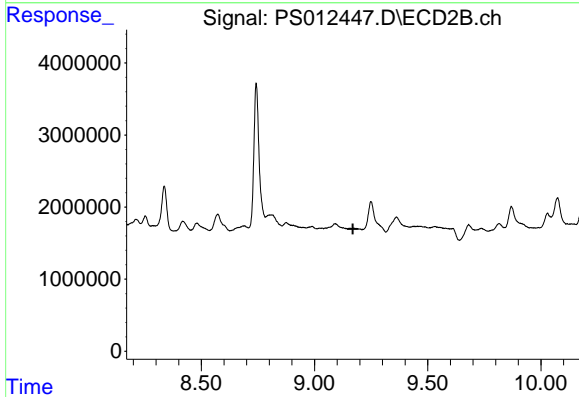


#11 2,4,5-TP (SILVEX)  
 R.T.: 8.742 min  
 Delta R.T.: -0.046 min  
 Response: 29206550  
 Conc: 11.07 ng/ml

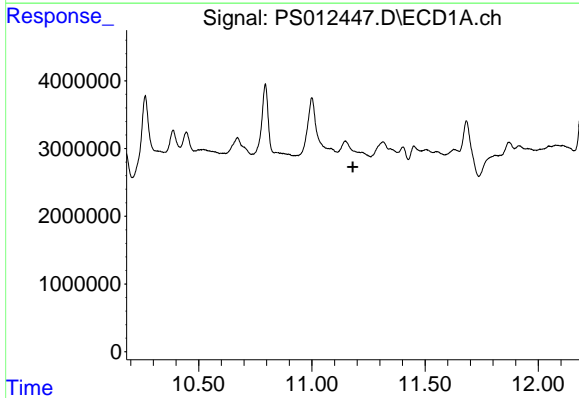


#12 2,4,5-T  
 R.T.: 9.407 min  
 Delta R.T.: -0.065 min  
 Response: 73183998  
 Conc: 13.02 ng/ml

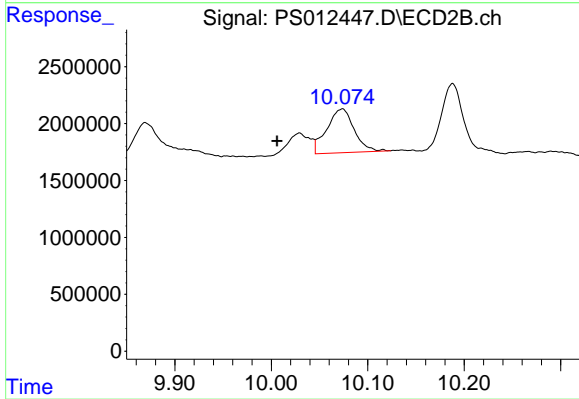
Instrument :  
 ECD\_S  
 ClientSampled :



#12 2,4,5-T  
 R.T.: 0.000 min  
 Exp R.T. : 9.169 min  
 Response: 0  
 Conc: N.D.

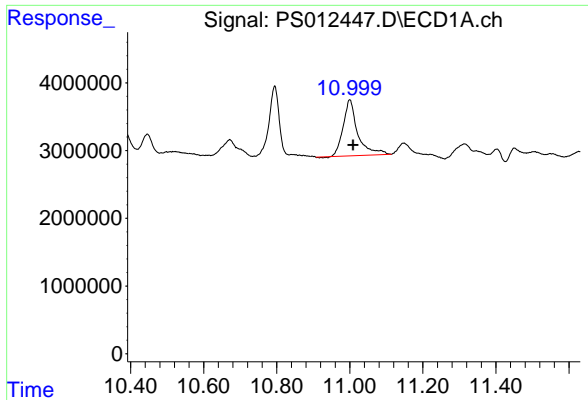


#14 DINOSEB  
 R.T.: 0.000 min  
 Exp R.T. : 11.181 min  
 Response: 0  
 Conc: N.D.



#14 DINOSEB  
 R.T.: 10.074 min  
 Delta R.T.: 0.067 min  
 Response: 7564810  
 Conc: 3.95 ng/ml

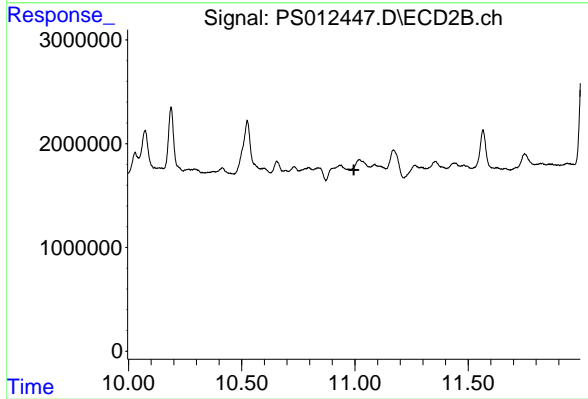




#15 Picloram

R.T.: 11.000 min  
Delta R.T.: -0.009 min  
Response: 22789298  
Conc: 3.17 ng/ml

Instrument :  
ECD\_S  
ClientSampleId :



#15 Picloram

R.T.: 0.000 min  
Exp R.T. : 10.995 min  
Response: 0  
Conc: N.D.