

Data Path : Z:\pestpcbsrv\HPCHEM1\ECD\_S\Data\PS092320\  
 Data File : PS012460.D  
 Signal(s) : Signal #1: ECD1A.ch Signal #2: ECD2B.ch  
 Acq On : 23 Sep 2020 16:45  
 Operator : DD\AJ  
 Sample : L4093-01  
 Misc :  
 ALS Vial : 20 Sample Multiplier: 1

Instrument :  
 ECD\_S  
 ClientSampleId :

Integration File signal 1: autoint1.e  
 Integration File signal 2: autoint2.e  
 Quant Time: Sep 23 17:47:58 2020  
 Quant Method : Z:\pestpcbsrv\HPCHEM1\ECD\_S\Method\PS092220.M  
 Quant Title : 8080.M  
 QLast Update : Wed Sep 23 04:57:25 2020  
 Response via : Initial Calibration  
 Integrator: ChemStation

Volume Inj. : 2 µl  
 Signal #1 Phase : Rtx-CLPesticides Signal #2 Phase: Rtx-CLPesticides2  
 Signal #1 Info : 30M x 0.32mm x0.5 Signal #2 Info : 30M x 0.32mm x 0.25µm

Compound	RT#1	RT#2	Resp#1	Resp#2	ng/ml	ng/ml
-----						
System Monitoring Compounds						
4) S 2,4-DCAA	7.216	6.913	384.3E6	204.8E6	392.387	445.297
Target Compounds						
1) T Dalapon	2.994	2.588	65413770	154.0E6	57.564	257.422 #
2) T 3,5-DICHL...	0.000	6.094	0	63167705	N.D.	88.599
3) T 4-Nitroph...	6.989	0.000	18186996	0	37.401	N.D. #
5) T DICAMBA	7.394	7.046	6477581	10653804	1.679	5.587 #
6) T MCPP	7.568	7.205	7126703	2091668	2.443	1.383 #
7) T MCPA	7.707	7.373	13213024	41512369	3.168	17.316 #
8) T DICHLORPROP	0.000	7.742	0	13265579	N.D.	25.692
9) T 2,4-D	8.287	7.974	21028307	3955320	18.520	6.316 #
10) T Pentachlo...	8.692	8.441	12743801	9919459	<MDL	1.626 #
11) T 2,4,5-TP ...	0.000	8.760	0	39936490	N.D.	15.137
12) T 2,4,5-T	9.408	0.000	31619913	0	5.625	N.D. #
14) T DINOSEB	0.000	10.022	0	10466499	N.D.	5.464
15) T Picloram	0.000	11.002	0	12860105	N.D.	3.263
16) T DCPA	11.449	10.934	17095373	24057432	2.420	7.234 #
-----						

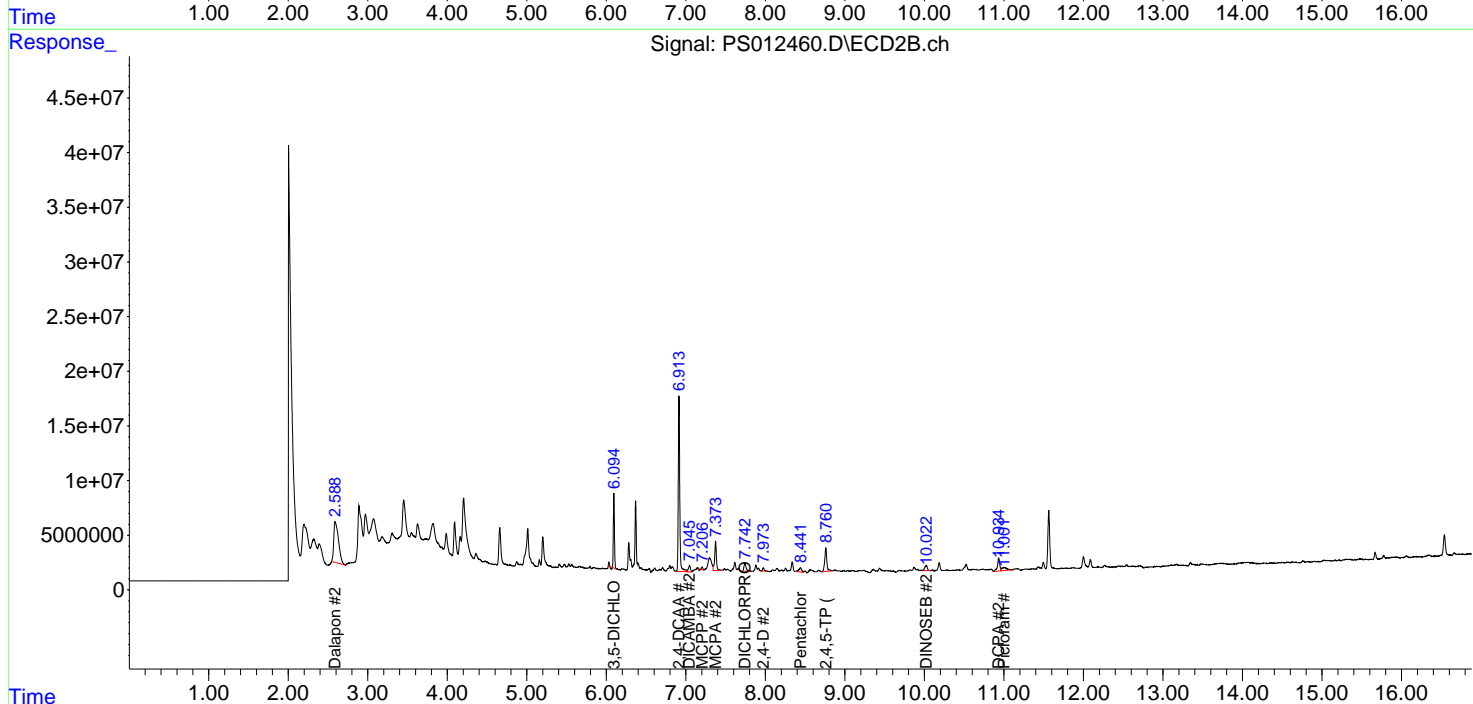
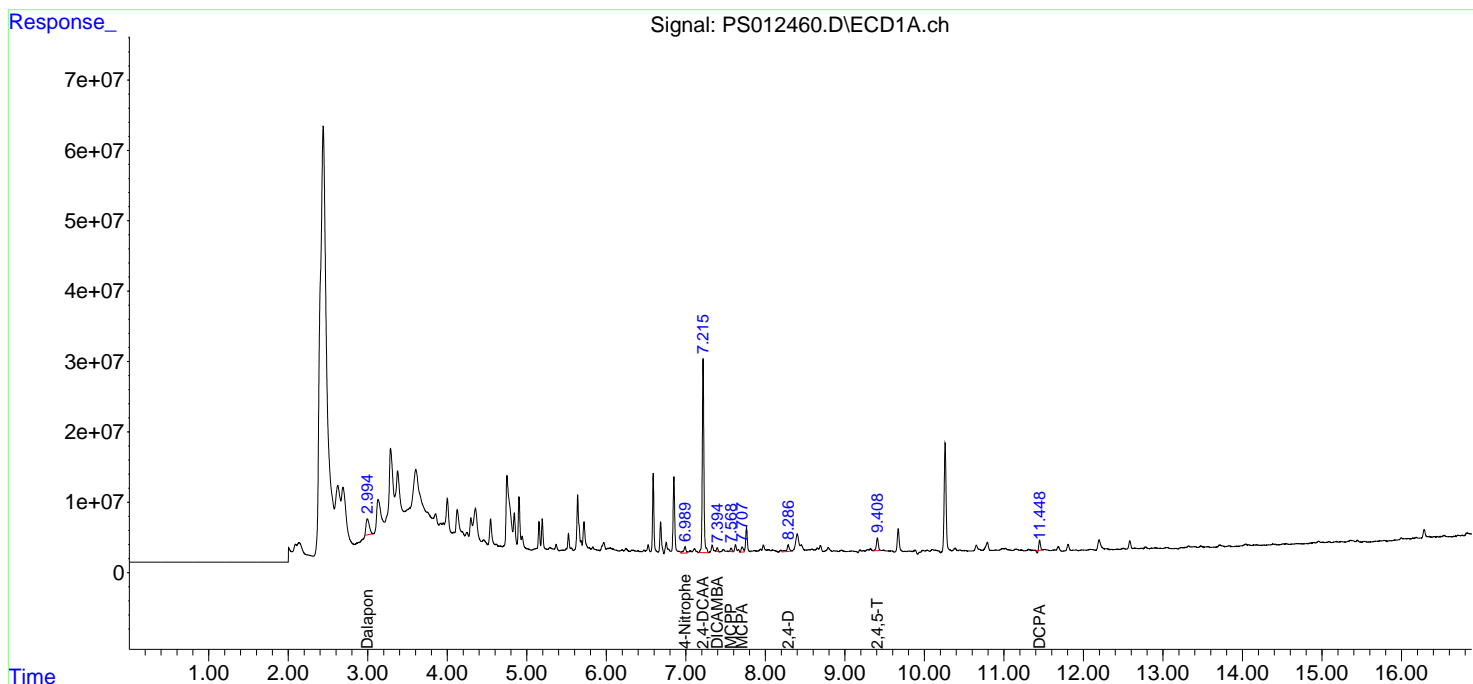
(f)=RT Delta > 1/2 Window (#)=Amounts differ by > 25% (m)=manual int.

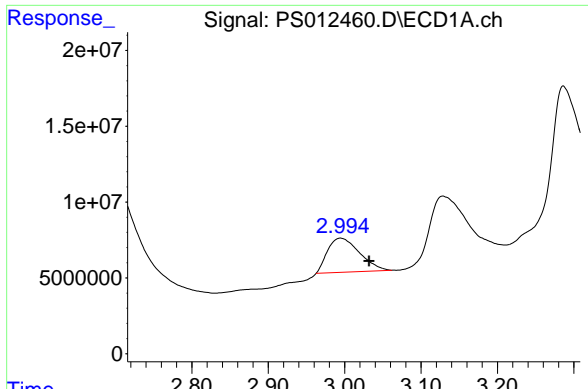
Data Path : Z:\pestpcbsrv\HPCHEM1\ECD\_S\Data\PS092320\  
 Data File : PS012460.D  
 Signal(s) : Signal #1: ECD1A.ch Signal #2: ECD2B.ch  
 Acq On : 23 Sep 2020 16:45  
 Operator : DD\AJ  
 Sample : L4093-01  
 Misc :  
 ALS Vial : 20 Sample Multiplier: 1

Instrument :  
 ECD\_S  
 ClientSampled :

Integration File signal 1: autoint1.e  
 Integration File signal 2: autoint2.e  
 Quant Time: Sep 23 17:47:58 2020  
 Quant Method : Z:\pestpcbsrv\HPCHEM1\ECD\_S\Method\PS092220.M  
 Quant Title : 8080.M  
 QLast Update : Wed Sep 23 04:57:25 2020  
 Response via : Initial Calibration  
 Integrator: ChemStation

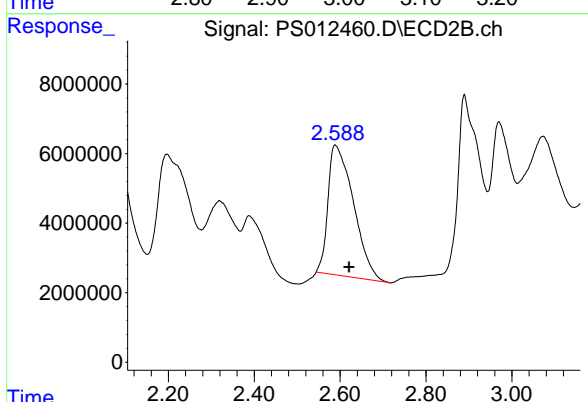
Volume Inj. : 2 µl  
 Signal #1 Phase : Rtx-CLPesticides Signal #2 Phase: Rtx-CLPesticides2  
 Signal #1 Info : 30M x 0.32mm x0.5 Signal #2 Info : 30M x 0.32mm x 0.25µm



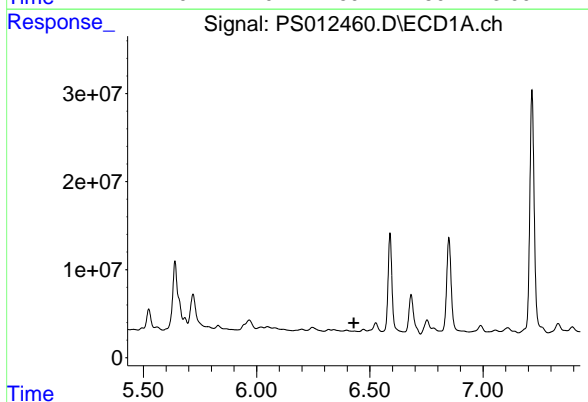


#1 Dalapon  
 R.T.: 2.994 min  
 Delta R.T.: -0.038 min  
 Response: 65413770  
 Conc: 57.56 ng/ml

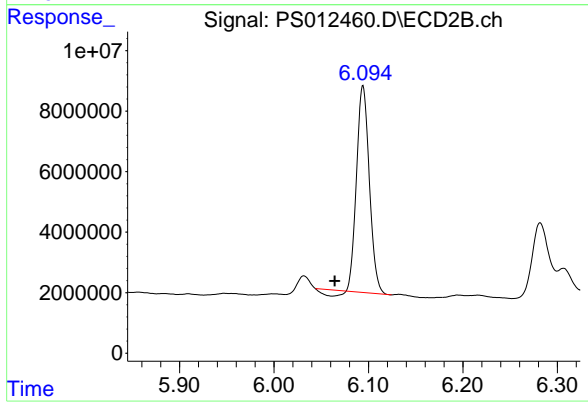
Instrument :  
 ECD\_S  
 ClientSampled :



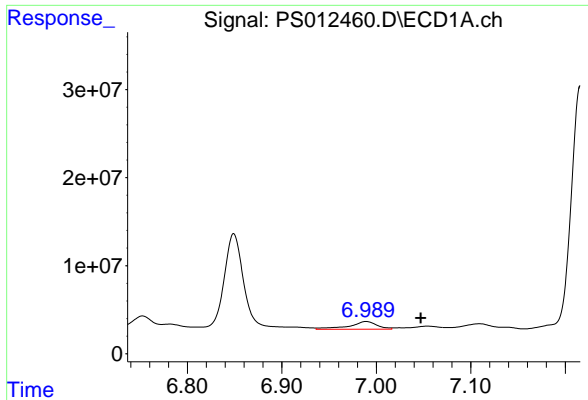
#1 Dalapon  
 R.T.: 2.588 min  
 Delta R.T.: -0.032 min  
 Response: 153987067  
 Conc: 257.42 ng/ml



#2 3,5-DICHLOROBENZOIC ACID  
 R.T.: 0.000 min  
 Exp R.T. : 6.430 min  
 Response: 0  
 Conc: N.D.

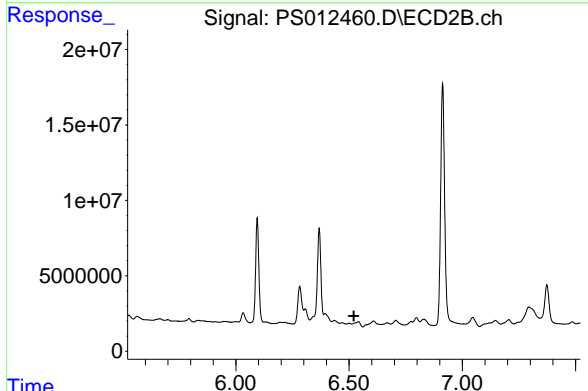


#2 3,5-DICHLOROBENZOIC ACID  
 R.T.: 6.094 min  
 Delta R.T.: 0.030 min  
 Response: 63167705  
 Conc: 88.60 ng/ml

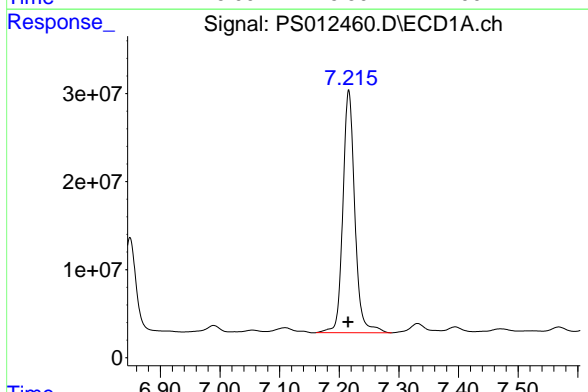


#3 4-Nitrophenol  
 R.T.: 6.989 min  
 Delta R.T.: -0.058 min  
 Response: 18186996  
 Conc: 37.40 ng/ml

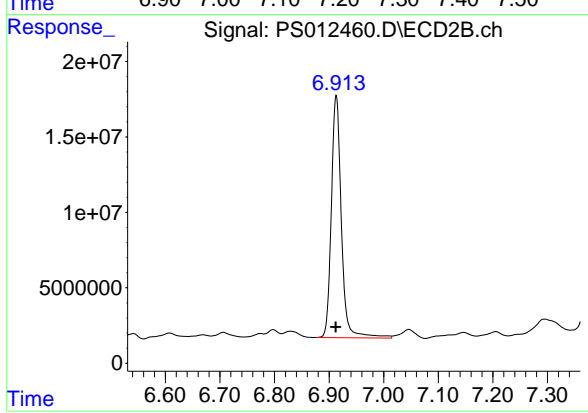
Instrument :  
 ECD\_S  
 ClientSampled :



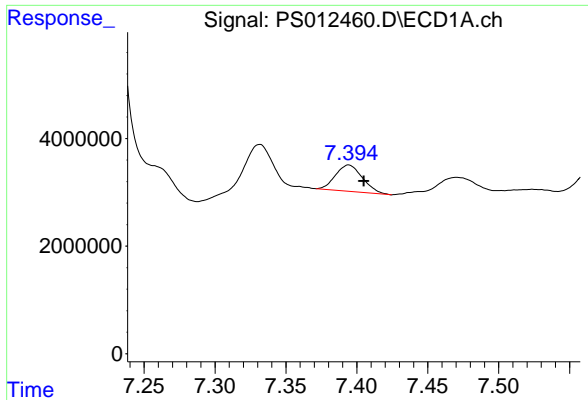
#3 4-Nitrophenol  
 R.T.: 0.000 min  
 Exp R.T. : 6.522 min  
 Response: 0  
 Conc: N.D.



#4 2,4-DCAA  
 R.T.: 7.216 min  
 Delta R.T.: 0.002 min  
 Response: 384322923  
 Conc: 392.39 ng/ml

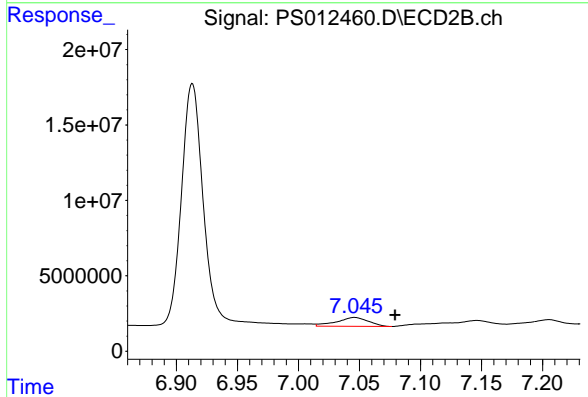


#4 2,4-DCAA  
 R.T.: 6.913 min  
 Delta R.T.: 0.000 min  
 Response: 204844149  
 Conc: 445.30 ng/ml

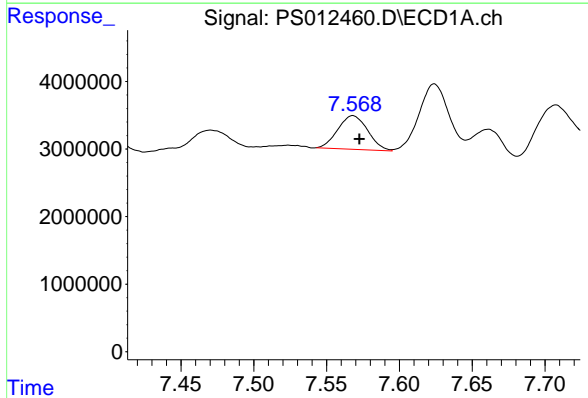


#5 DICAMBA  
 R.T.: 7.394 min  
 Delta R.T.: -0.011 min  
 Response: 6477581  
 Conc: 1.68 ng/ml

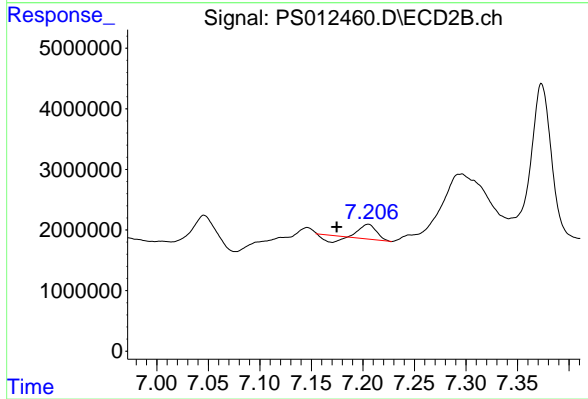
Instrument :  
 ECD\_S  
 ClientSampled :



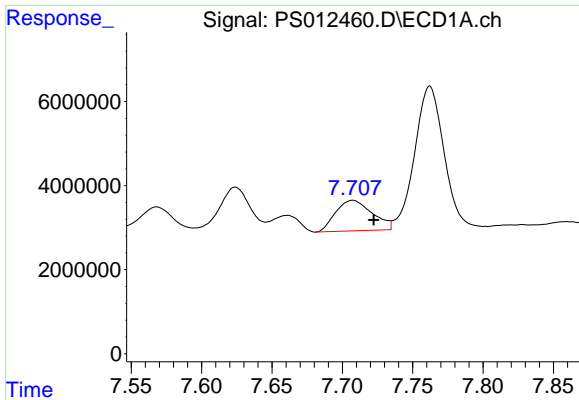
#5 DICAMBA  
 R.T.: 7.046 min  
 Delta R.T.: -0.033 min  
 Response: 10653804  
 Conc: 5.59 ng/ml



#6 MCPP  
 R.T.: 7.568 min  
 Delta R.T.: -0.005 min  
 Response: 7126703  
 Conc: 2.44 ug/ml

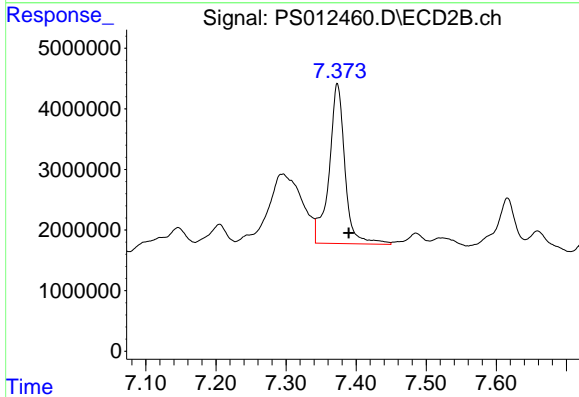


#6 MCPP  
 R.T.: 7.205 min  
 Delta R.T.: 0.031 min  
 Response: 2091668  
 Conc: 1.38 ug/ml

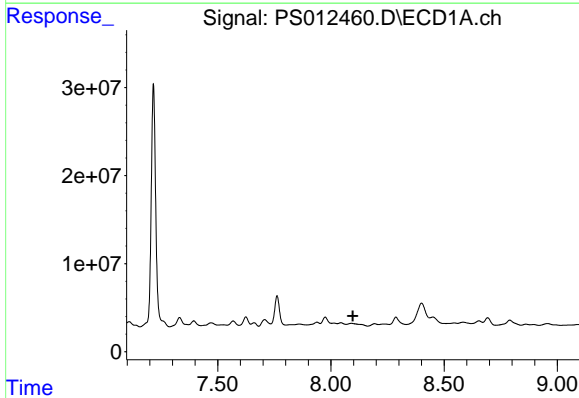


#7 MCPA  
 R.T.: 7.707 min  
 Delta R.T.: -0.015 min  
 Response: 13213024  
 Conc: 3.17 ug/ml

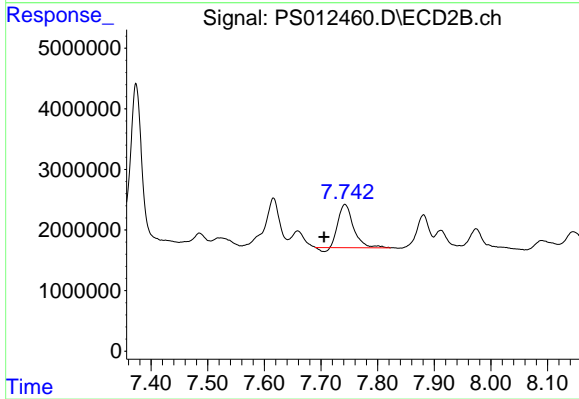
Instrument :  
 ECD\_S  
 ClientSampleId :



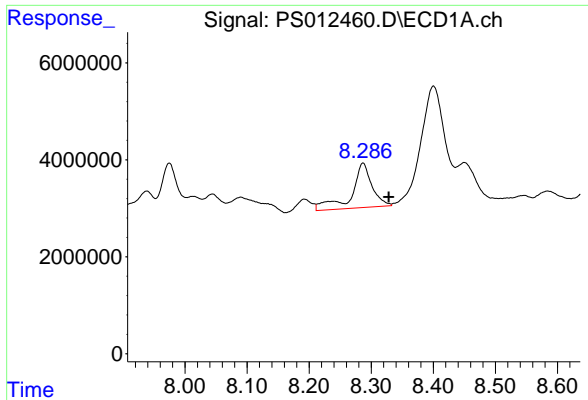
#7 MCPA  
 R.T.: 7.373 min  
 Delta R.T.: -0.016 min  
 Response: 41512369  
 Conc: 17.32 ug/ml



#8 DICHLORPROP  
 R.T.: 0.000 min  
 Exp R.T. : 8.097 min  
 Response: 0  
 Conc: N.D.

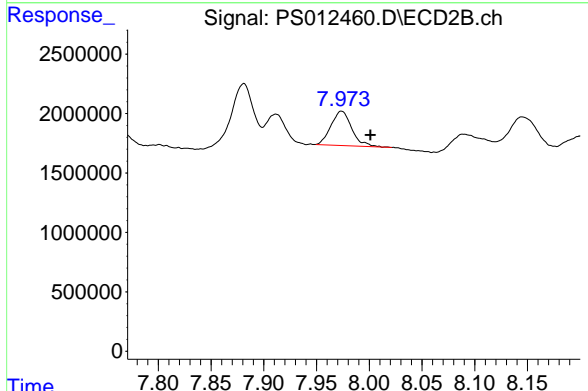


#8 DICHLORPROP  
 R.T.: 7.742 min  
 Delta R.T.: 0.037 min  
 Response: 13265579  
 Conc: 25.69 ng/ml

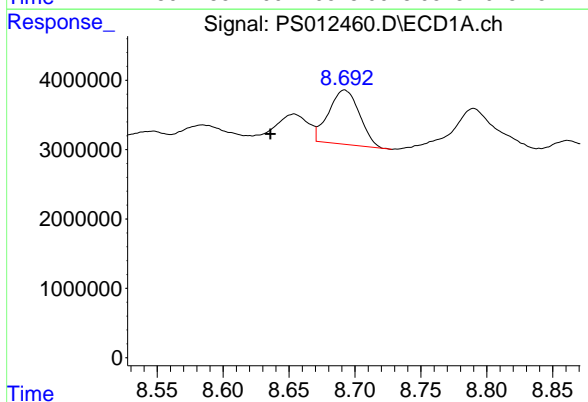


#9 2,4-D  
 R.T.: 8.287 min  
 Delta R.T.: -0.041 min  
 Response: 21028307  
 Conc: 18.52 ng/ml

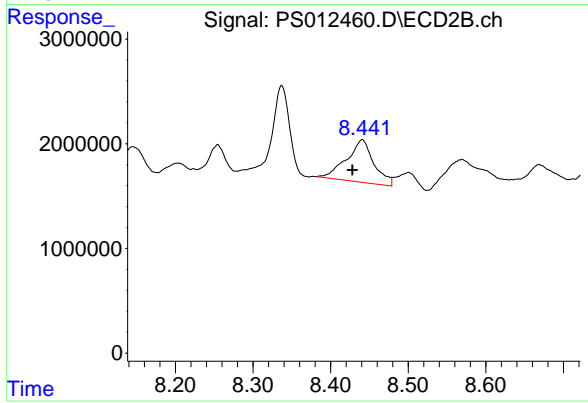
Instrument :  
 ECD\_S  
 ClientSampleId :



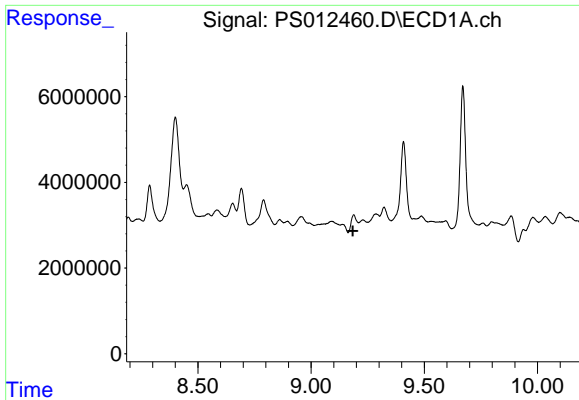
#9 2,4-D  
 R.T.: 7.974 min  
 Delta R.T.: -0.027 min  
 Response: 3955320  
 Conc: 6.32 ng/ml



#10 Pentachlorophenol  
 R.T.: 8.692 min  
 Delta R.T.: 0.056 min  
 Response: 12743801  
 Conc: N.D.

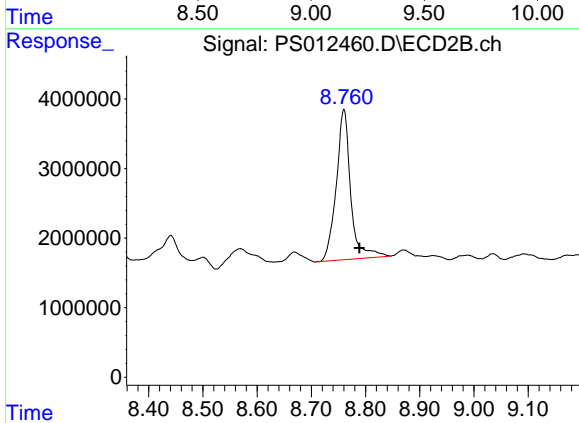


#10 Pentachlorophenol  
 R.T.: 8.441 min  
 Delta R.T.: 0.013 min  
 Response: 9919459  
 Conc: 1.63 ng/ml

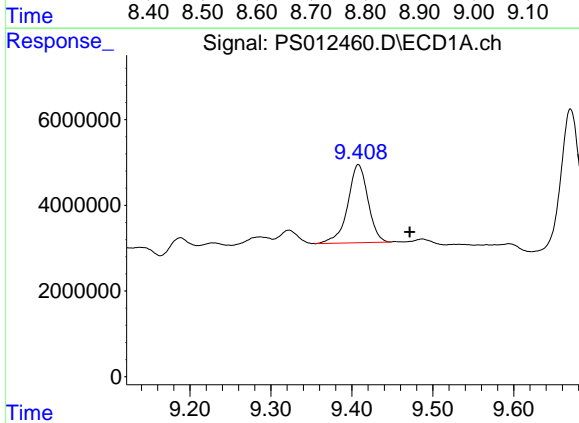


#11 2,4,5-TP (SILVEX)  
 R.T.: 0.000 min  
 Exp R.T.: 9.185 min  
 Response: 0  
 Conc: N.D.

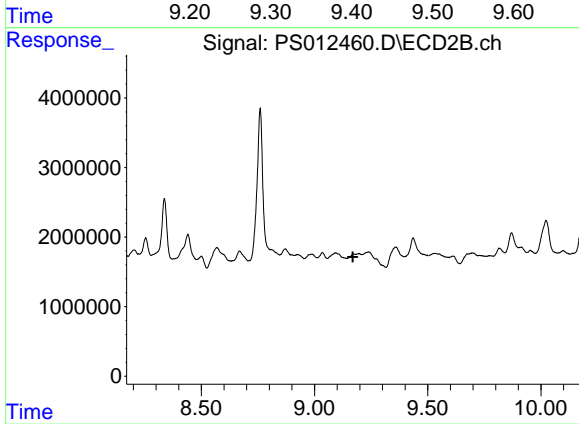
Instrument :  
 ECD\_S  
 ClientSampled :



#11 2,4,5-TP (SILVEX)  
 R.T.: 8.760 min  
 Delta R.T.: -0.029 min  
 Response: 39936490  
 Conc: 15.14 ng/ml

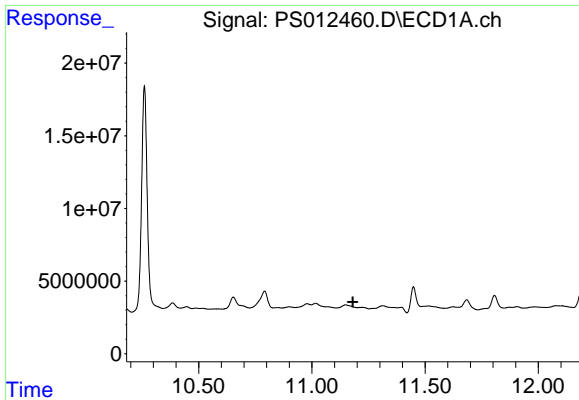


#12 2,4,5-T  
 R.T.: 9.408 min  
 Delta R.T.: -0.064 min  
 Response: 31619913  
 Conc: 5.63 ng/ml



#12 2,4,5-T  
 R.T.: 0.000 min  
 Exp R.T.: 9.169 min  
 Response: 0  
 Conc: N.D.

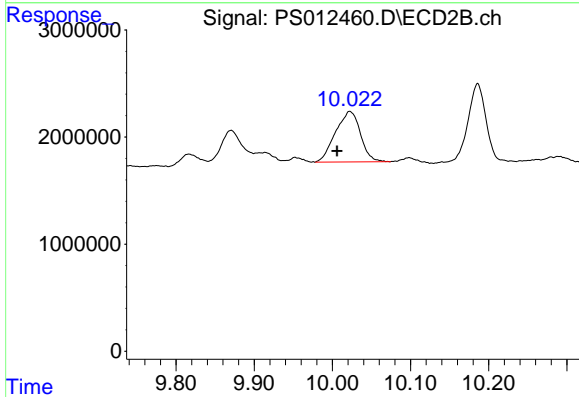




#14 DINOSEB

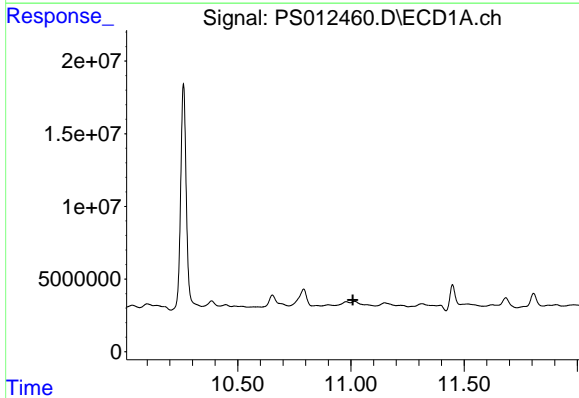
R.T.: 0.000 min  
 Exp R.T. : 11.181 min  
 Response: 0  
 Conc: N.D.

Instrument :  
 ECD\_S  
 ClientSampleId :



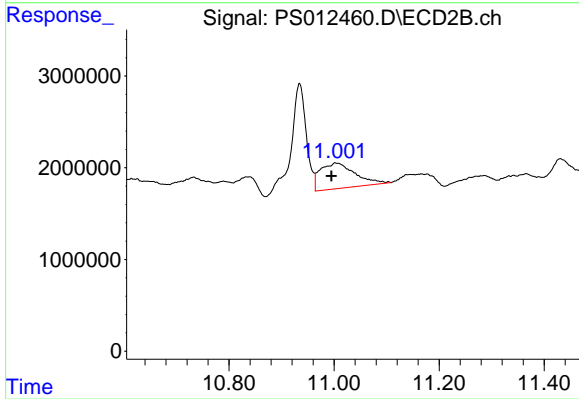
#14 DINOSEB

R.T.: 10.022 min  
 Delta R.T.: 0.016 min  
 Response: 10466499  
 Conc: 5.46 ng/ml



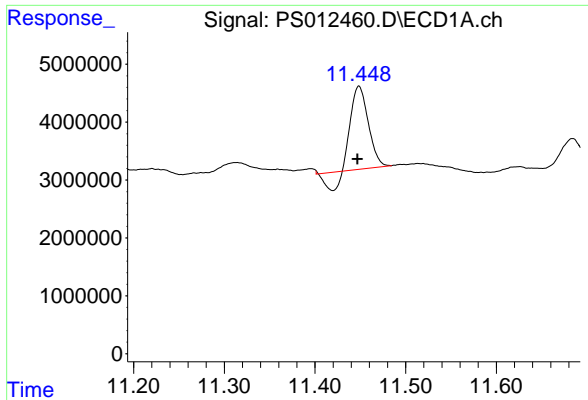
#15 Picloram

R.T.: 0.000 min  
 Exp R.T. : 11.009 min  
 Response: 0  
 Conc: N.D.



#15 Picloram

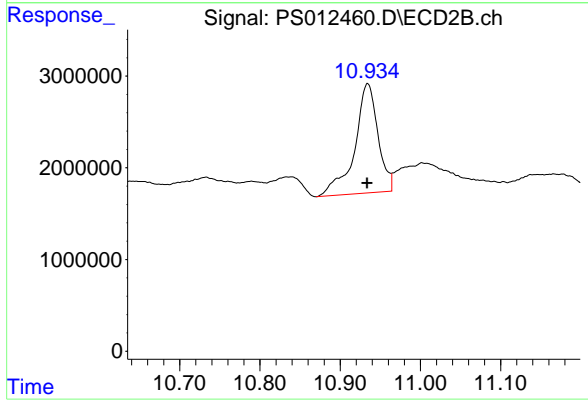
R.T.: 11.001 min  
 Delta R.T.: 0.007 min  
 Response: 12860105  
 Conc: 3.26 ng/ml



#16 DCPA

R.T.: 11.449 min  
Delta R.T.: 0.002 min  
Response: 17095373  
Conc: 2.42 ng/ml

Instrument :  
ECD\_S  
ClientSampled :



#16 DCPA

R.T.: 10.934 min  
Delta R.T.: 0.000 min  
Response: 24057432  
Conc: 7.23 ng/ml