

Data Path : Z:\pestpcbsrv\HPCHEM1\ECD_S\Data\PS092418\
 Data File : PS001825.D
 Signal(s) : Signal #1: ECD1A.ch Signal #2: ECD2B.ch
 Acq On : 25 Sep 2018 04:26
 Operator : EI\SJ
 Sample : J5023-08
 Misc :
 ALS Vial : 26 Sample Multiplier: 1

Instrument :
 ECD_S
 ClientSampleId :

Integration File signal 1: autoint1.e
 Integration File signal 2: autoint2.e
 Quant Time: Sep 25 06:34:12 2018
 Quant Method : Z:\pestpcbsrv\HPCHEM1\ECD_S\Method\PS091718.M
 Quant Title : 8080.M
 QLast Update : Tue Sep 18 03:01:16 2018
 Response via : Initial Calibration
 Integrator: ChemStation

Volume Inj. : 2 µl
 Signal #1 Phase : Rtx-CLPesticides Signal #2 Phase: Rtx-CLPesticides2
 Signal #1 Info : 30M x 0.32mm x0.5 Signal #2 Info : 30M x 0.32mm x 0.25µm

Compound	RT#1	RT#2	Resp#1	Resp#2	ng/ml	ng/ml

System Monitoring Compounds						
4) S 2,4-DCAA	11.498	10.995	55347739	53083694	246.740	208.977
Target Compounds						
1) T Dalapon	2.929	2.411	37499036	45988061	115.322	155.672 #
2) T 3,5-DICHL...	0.000	9.152	0	1804631	N.D.	5.717 #
5) T DICAMBA	0.000	11.238	0	24027541	N.D.	26.940 #
6) T MCPP	12.185	0.000	25767506	0	40.436	N.D. #
9) T 2,4-D	0.000	12.829	0	4772488	N.D.	15.340 #
10) T Pentachlo...	0.000	13.350	0	2556893	N.D.	0.746 #
11) T 2,4,5-TP ...	14.565	0.000	3440888	0	2.908	N.D. #

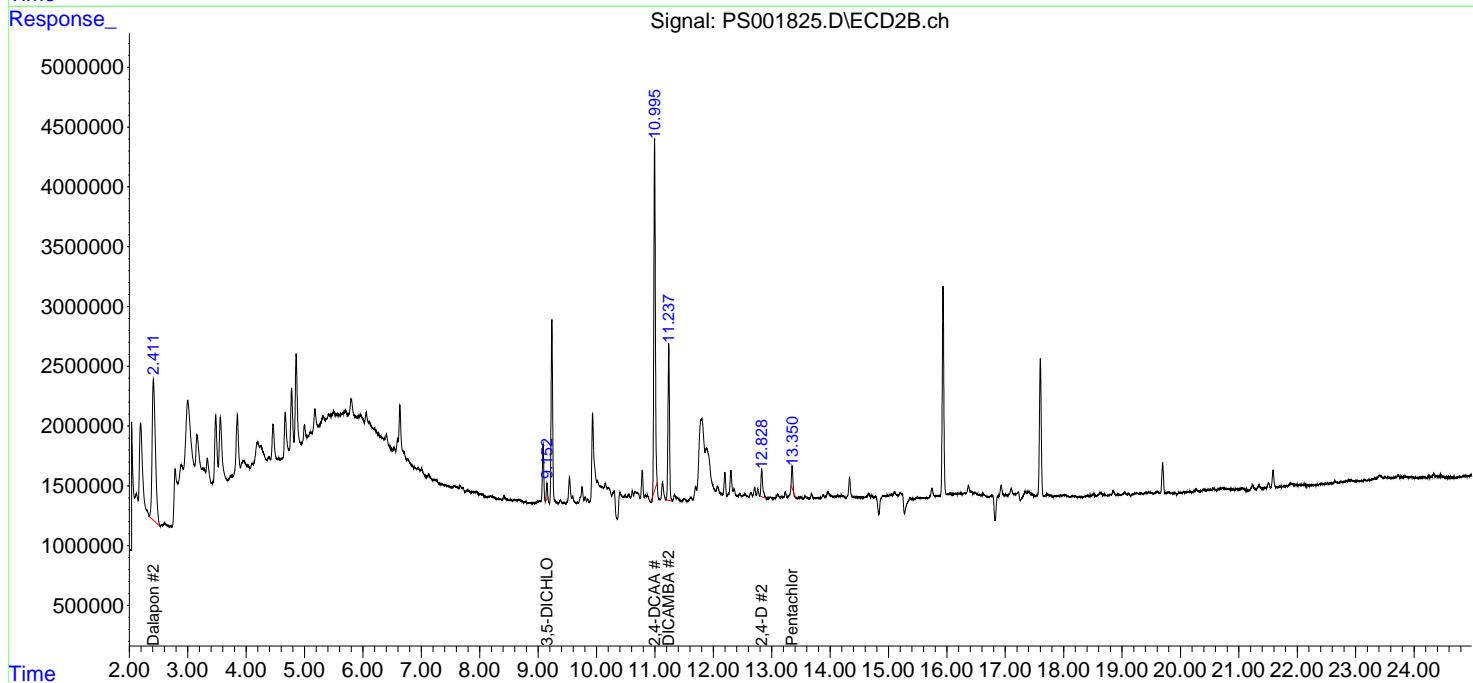
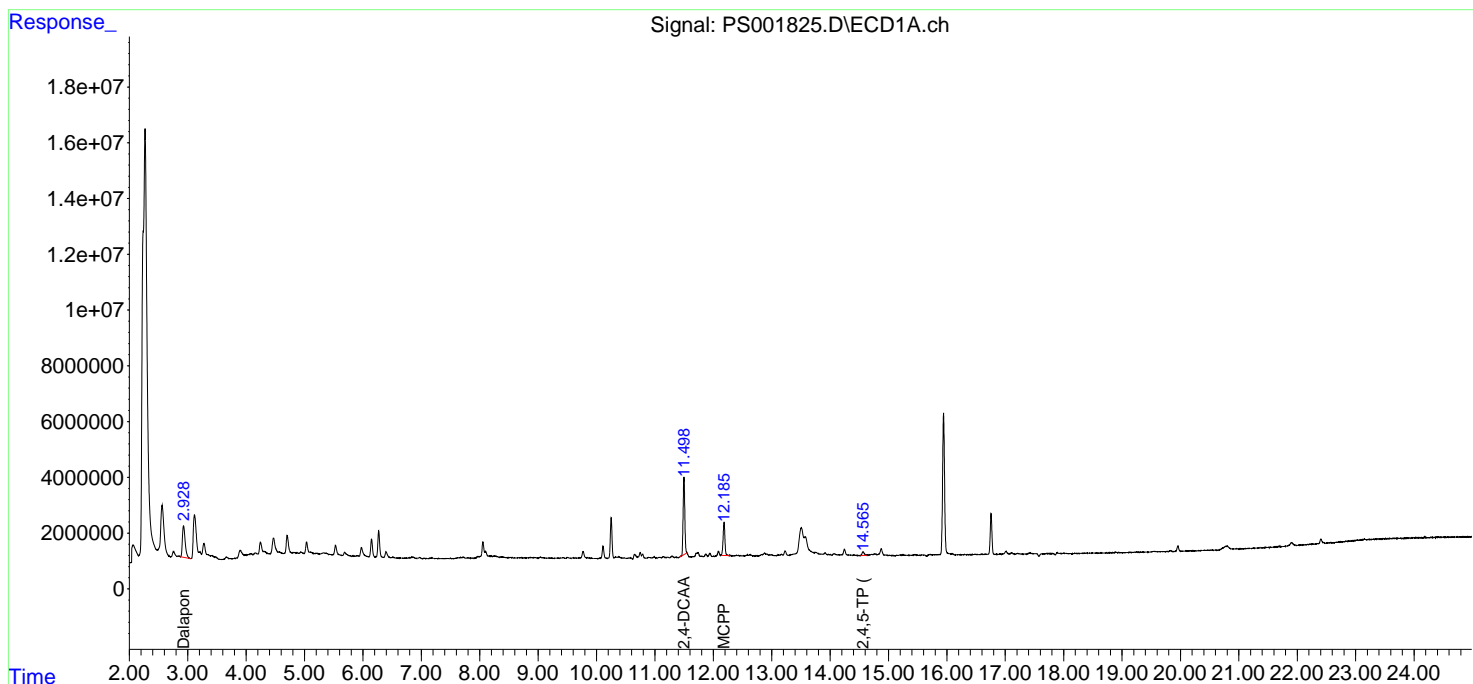
(f)=RT Delta > 1/2 Window (#)=Amounts differ by > 25% (m)=manual int.

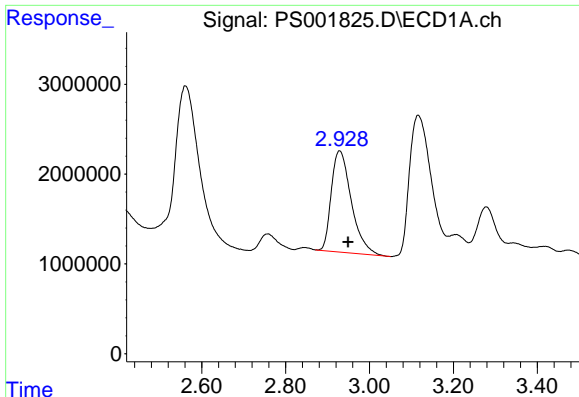
Data Path : Z:\pestpcbsrv\HPCHEM1\ECD_S\Data\PS092418\
 Data File : PS001825.D
 Signal(s) : Signal #1: ECD1A.ch Signal #2: ECD2B.ch
 Acq On : 25 Sep 2018 04:26
 Operator : EI\SJ
 Sample : J5023-08
 Misc :
 ALS Vial : 26 Sample Multiplier: 1

Instrument :
 ECD_S
 ClientSampled :

Integration File signal 1: autoint1.e
 Integration File signal 2: autoint2.e
 Quant Time: Sep 25 06:34:12 2018
 Quant Method : Z:\pestpcbsrv\HPCHEM1\ECD_S\Method\PS091718.M
 Quant Title : 8080.M
 QLast Update : Tue Sep 18 03:01:16 2018
 Response via : Initial Calibration
 Integrator: ChemStation

Volume Inj. : 2 µl
 Signal #1 Phase : Rtx-CLPesticides Signal #2 Phase: Rtx-CLPesticides2
 Signal #1 Info : 30M x 0.32mm x 0.5 Signal #2 Info : 30M x 0.32mm x 0.25µm

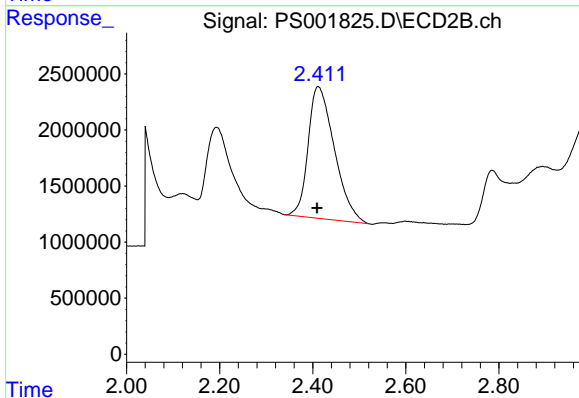




#1 Dalapon

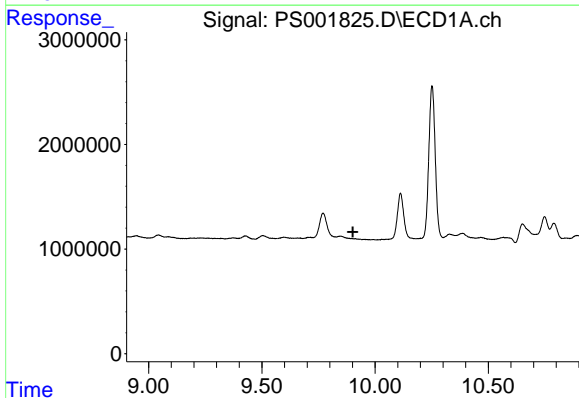
R.T.: 2.929 min
 Delta R.T.: -0.020 min
 Response: 37499036
 Conc: 115.32 ng/ml

Instrument :
 ECD_S
 ClientSampleId :



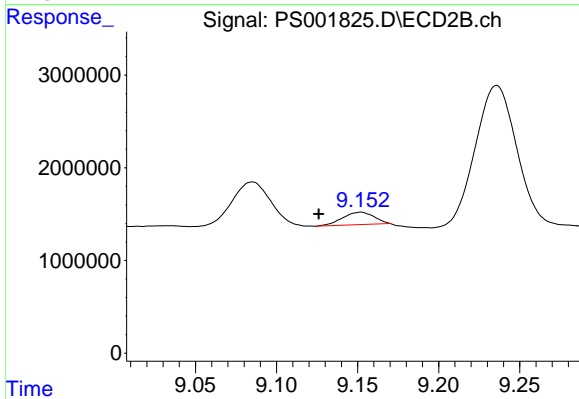
#1 Dalapon

R.T.: 2.411 min
 Delta R.T.: 0.002 min
 Response: 45988061
 Conc: 155.67 ng/ml



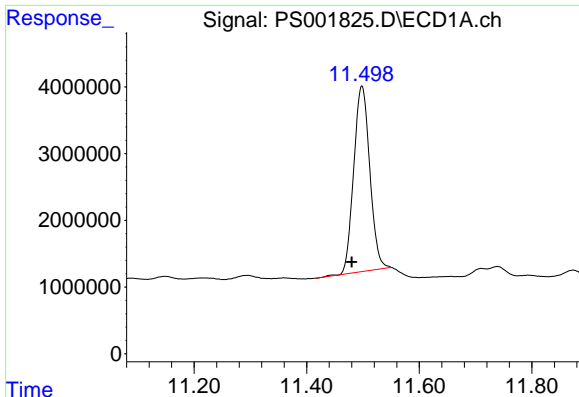
#2 3,5-DICHLOROBENZOIC ACID

R.T.: 0.000 min
 Exp R.T. : 9.902 min
 Response: 0
 Conc: N.D.



#2 3,5-DICHLOROBENZOIC ACID

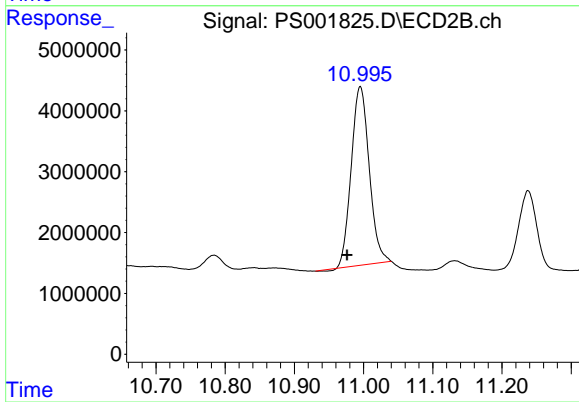
R.T.: 9.152 min
 Delta R.T.: 0.026 min
 Response: 1804631
 Conc: 5.72 ng/ml



#4 2,4-DCAA

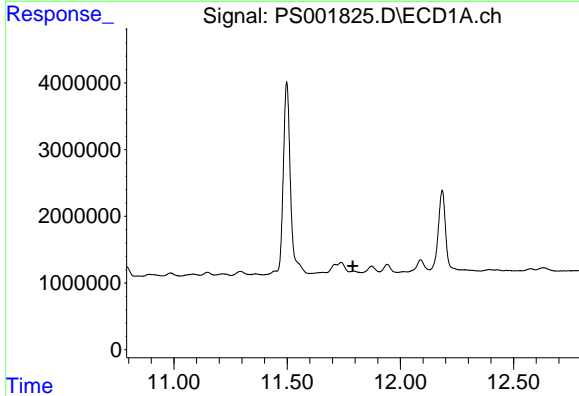
R.T.: 11.498 min
 Delta R.T.: 0.018 min
 Response: 55347739
 Conc: 246.74 ng/ml

Instrument :
 ECD_S
 ClientSampled :



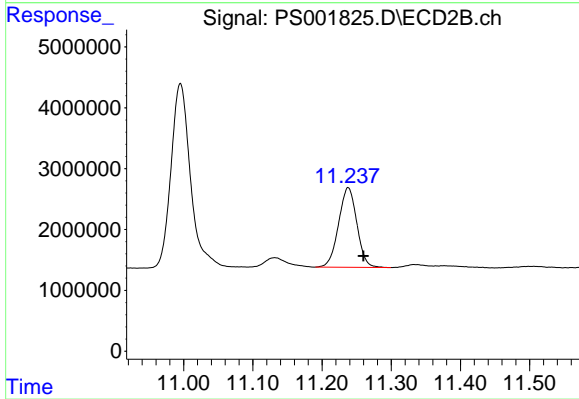
#4 2,4-DCAA

R.T.: 10.995 min
 Delta R.T.: 0.019 min
 Response: 53083694
 Conc: 208.98 ng/ml



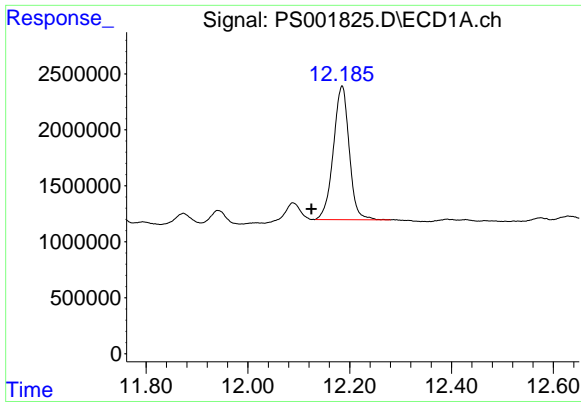
#5 DICAMBA

R.T.: 0.000 min
 Exp R.T. : 11.790 min
 Response: 0
 Conc: N.D.



#5 DICAMBA

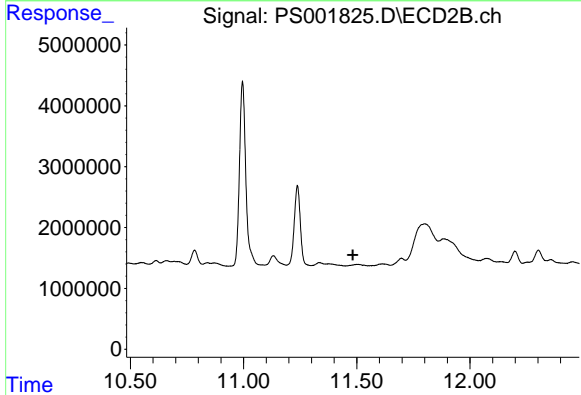
R.T.: 11.238 min
 Delta R.T.: -0.022 min
 Response: 24027541
 Conc: 26.94 ng/ml



#6 MCP

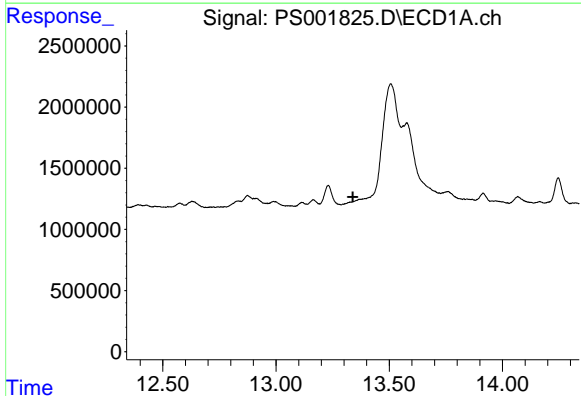
R.T.: 12.185 min
 Delta R.T.: 0.060 min
 Response: 25767506
 Conc: 40.44 ug/ml

Instrument :
 ECD_S
 ClientSampled :



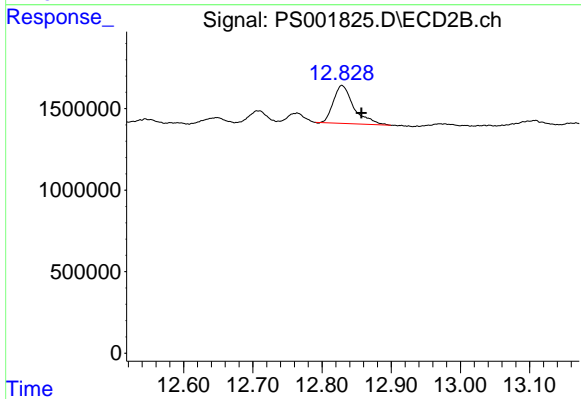
#6 MCP

R.T.: 0.000 min
 Exp R.T. : 11.483 min
 Response: 0
 Conc: N.D.



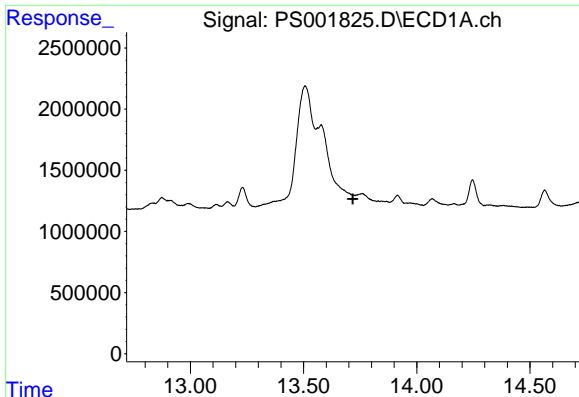
#9 2,4-D

R.T.: 0.000 min
 Exp R.T. : 13.340 min
 Response: 0
 Conc: N.D.



#9 2,4-D

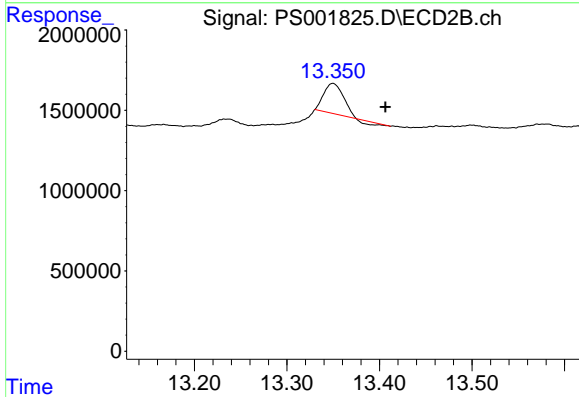
R.T.: 12.829 min
 Delta R.T.: -0.028 min
 Response: 4772488
 Conc: 15.34 ng/ml



#10 Pentachlorophenol

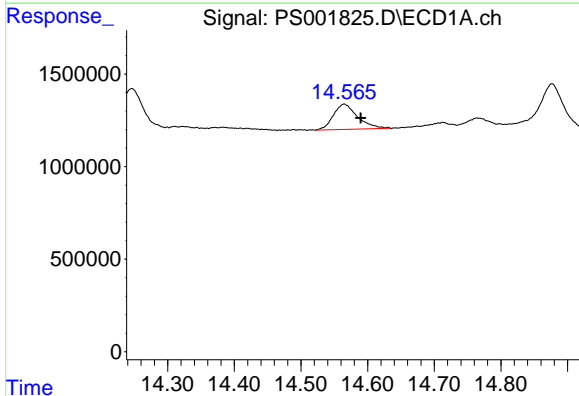
R.T.: 0.000 min
 Exp R.T. : 13.718 min
 Response: 0
 Conc: N.D.

Instrument :
 ECD_S
 ClientSampleId :



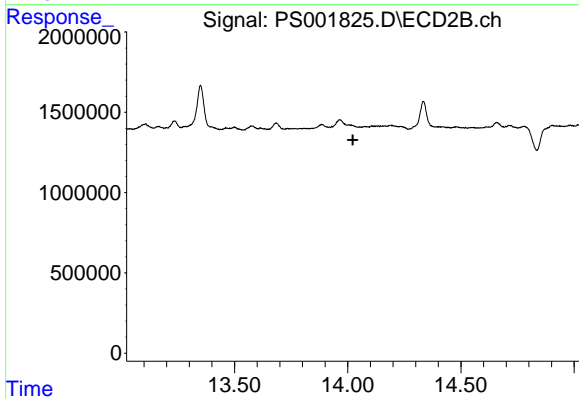
#10 Pentachlorophenol

R.T.: 13.350 min
 Delta R.T.: -0.057 min
 Response: 2556893
 Conc: 0.75 ng/ml



#11 2,4,5-TP (SILVEX)

R.T.: 14.565 min
 Delta R.T.: -0.025 min
 Response: 3440888
 Conc: 2.91 ng/ml



#11 2,4,5-TP (SILVEX)

R.T.: 0.000 min
 Exp R.T. : 14.023 min
 Response: 0
 Conc: N.D.