

Data Path : Z:\pestpcbsrv\HPCHEM1\ECD_S\Data\PS092420\
 Data File : PS012489.D
 Signal(s) : Signal #1: ECD1A.ch Signal #2: ECD2B.ch
 Acq On : 24 Sep 2020 14:56
 Operator : DD\AJ
 Sample : HSTDCCC750
 Misc :
 ALS Vial : 3 Sample Multiplier: 1

Instrument :
 ECD_S
 ClientSampleId :

Integration File signal 1: autoint1.e
 Integration File signal 2: autoint2.e
 Quant Time: Sep 24 16:54:28 2020
 Quant Method : Z:\pestpcbsrv\HPCHEM1\ECD_S\Method\PS092220.M
 Quant Title : 8080.M
 QLast Update : Wed Sep 23 04:57:25 2020
 Response via : Initial Calibration
 Integrator: ChemStation

Volume Inj. : 2 µl
 Signal #1 Phase : Rtx-CLPesticides Signal #2 Phase: Rtx-CLPesticides2
 Signal #1 Info : 30M x 0.32mm x0.5 Signal #2 Info : 30M x 0.32mm x 0.25µm

	Compound	RT#1	RT#2	Resp#1	Resp#2	ng/ml	ng/ml

System Monitoring Compounds							
4) S	2,4-DCAA	7.215	6.912	760.5E6	354.7E6	776.412	770.967
Target Compounds							
1) T	Dalapon	3.034	2.623	749.3E6	391.4E6	659.398	654.298
2) T	3,5-DICHL...	6.430	6.065	958.9E6	505.7E6	711.134	709.291
3) T	4-Nitroph...	7.047	6.521	347.2E6	198.5E6	713.932	710.330
5) T	DICAMBA	7.405	7.080	2820.7E6	1389.9E6	731.197	728.857
6) T	MCPP	7.574	7.176	218.1E6	111.1E6	74.739	73.475
7) T	MCPA	7.724	7.391	306.0E6	170.4E6	73.360	71.085
8) T	DICHLORPROP	8.097	7.705	707.1E6	373.4E6	730.660	723.100
9) T	2,4-D	8.327	8.001	829.1E6	458.5E6	730.250	732.183
10) T	Pentachlo...	8.636	8.429	10160.9E6	4513.5E6	735.244	739.988
11) T	2,4,5-TP ...	9.185	8.789	4127.0E6	1969.1E6	744.298	746.344
12) T	2,4,5-T	9.471	9.169	4176.5E6	1948.5E6	742.991	757.790
13) T	2,4-DB	10.023	9.676	770.8E6	272.8E6	814.504	728.760
14) T	DINOSEB	11.181	10.006	3257.4E6	1429.0E6	717.442	746.022
15) T	Picloram	11.006	10.994	5264.9E6	2764.0E6	731.227	701.276
16) T	DCPA	11.446	10.934	5302.1E6	2540.6E6	750.657	763.992

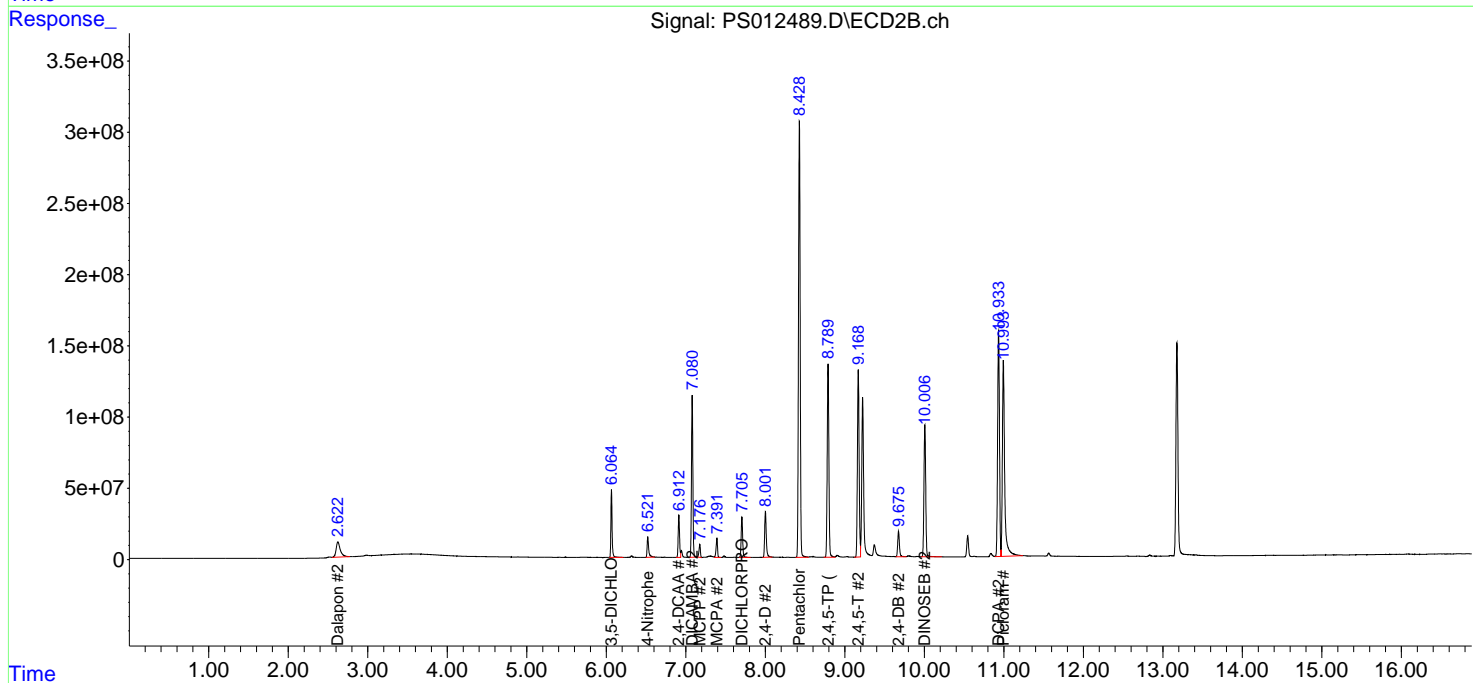
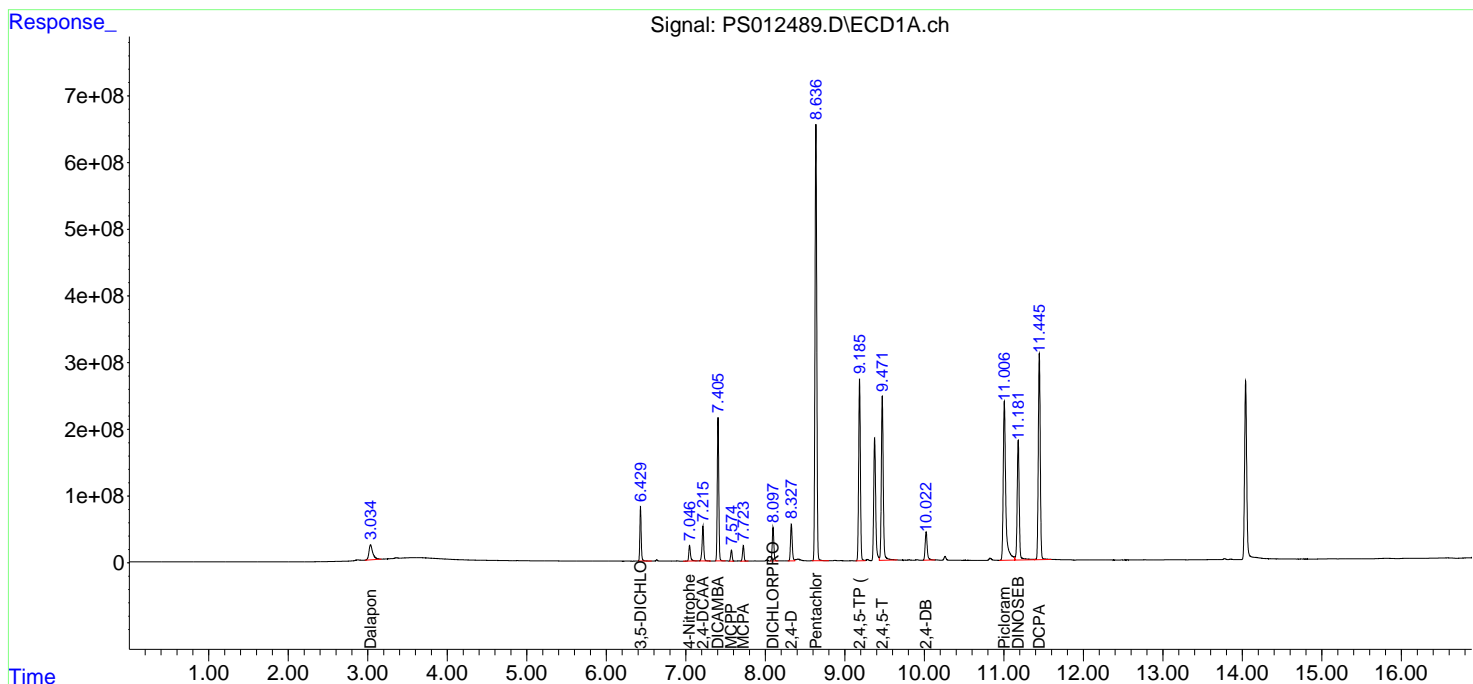
(f)=RT Delta > 1/2 Window (#)=Amounts differ by > 25% (m)=manual int.

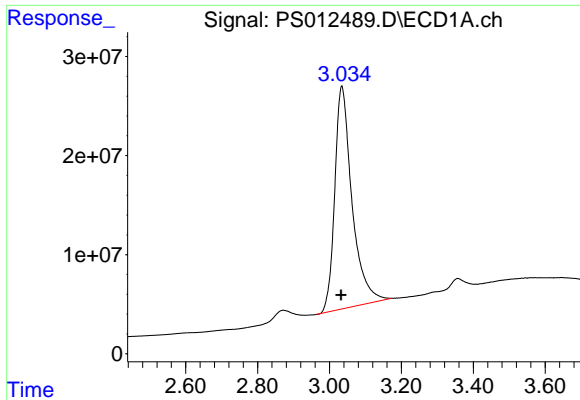
Data Path : Z:\pestpcbsrv\HPCHEM1\ECD_S\Data\PS092420\
 Data File : PS012489.D
 Signal(s) : Signal #1: ECD1A.ch Signal #2: ECD2B.ch
 Acq On : 24 Sep 2020 14:56
 Operator : DD\AJ
 Sample : HSTDCCC750
 Misc :
 ALS Vial : 3 Sample Multiplier: 1

Instrument :
 ECD_S
 ClientSampled :

Integration File signal 1: autoint1.e
 Integration File signal 2: autoint2.e
 Quant Time: Sep 24 16:54:28 2020
 Quant Method : Z:\pestpcbsrv\HPCHEM1\ECD_S\Method\PS092220.M
 Quant Title : 8080.M
 QLast Update : Wed Sep 23 04:57:25 2020
 Response via : Initial Calibration
 Integrator: ChemStation

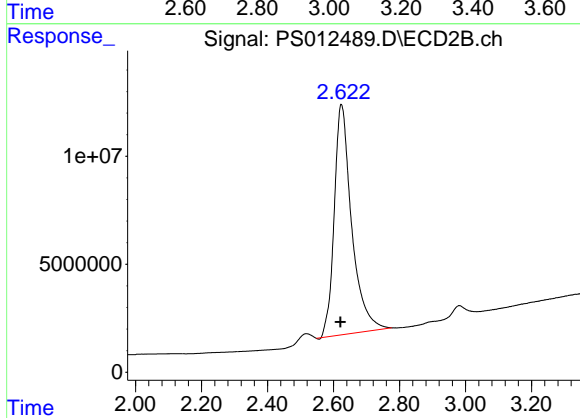
Volume Inj. : 2 µl
 Signal #1 Phase : Rtx-CLPesticides Signal #2 Phase: Rtx-CLPesticides2
 Signal #1 Info : 30M x 0.32mm x0.5 Signal #2 Info : 30M x 0.32mm x 0.25µm



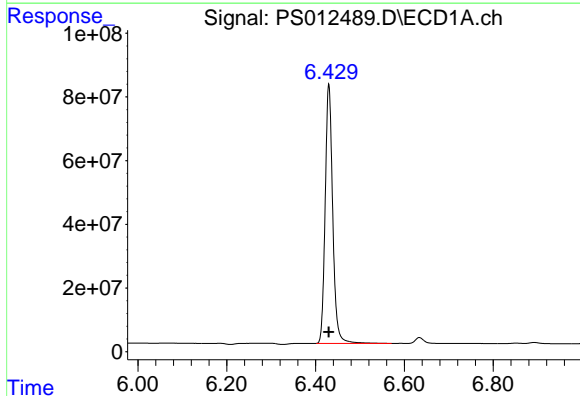


#1 Dalapon
 R.T.: 3.034 min
 Delta R.T.: 0.002 min
 Response: 749317918
 Conc: 659.40 ng/ml

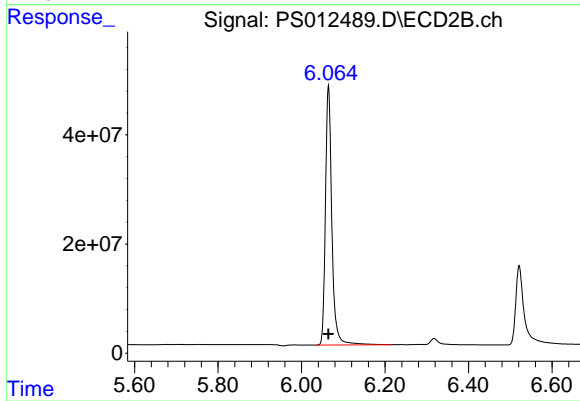
Instrument :
 ECD_S
 ClientSampleId :



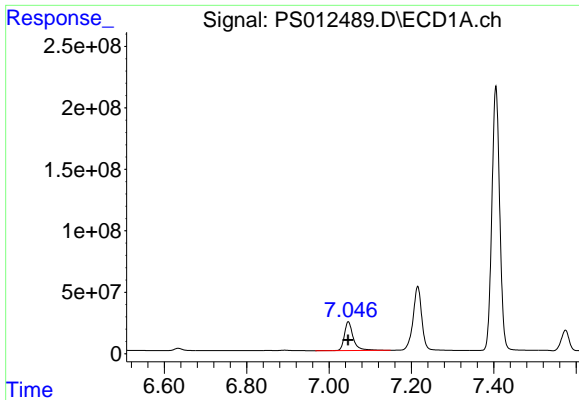
#1 Dalapon
 R.T.: 2.623 min
 Delta R.T.: 0.003 min
 Response: 391394312
 Conc: 654.30 ng/ml



#2 3,5-DICHLOROBENZOIC ACID
 R.T.: 6.430 min
 Delta R.T.: 0.000 min
 Response: 958924978
 Conc: 711.13 ng/ml

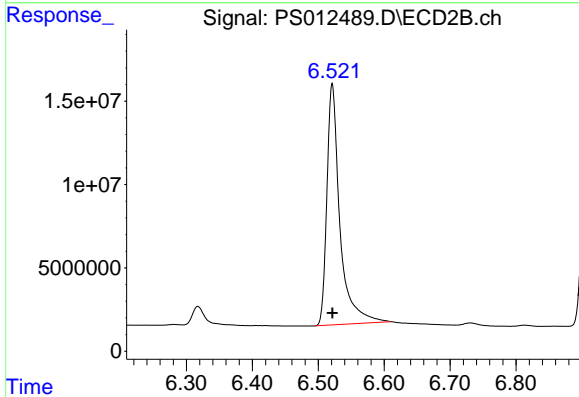


#2 3,5-DICHLOROBENZOIC ACID
 R.T.: 6.065 min
 Delta R.T.: 0.000 min
 Response: 505696409
 Conc: 709.29 ng/ml

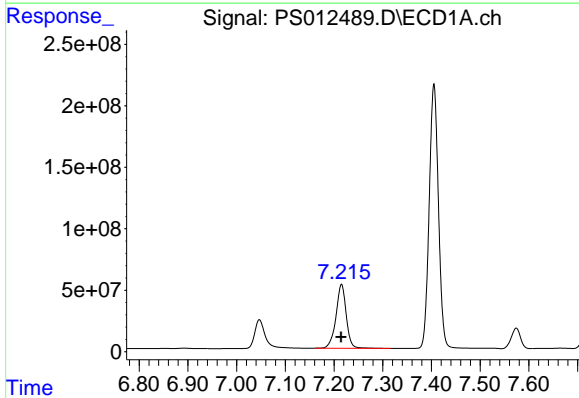


#3 4-Nitrophenol
R.T.: 7.047 min
Delta R.T.: 0.000 min
Response: 347159390
Conc: 713.93 ng/ml

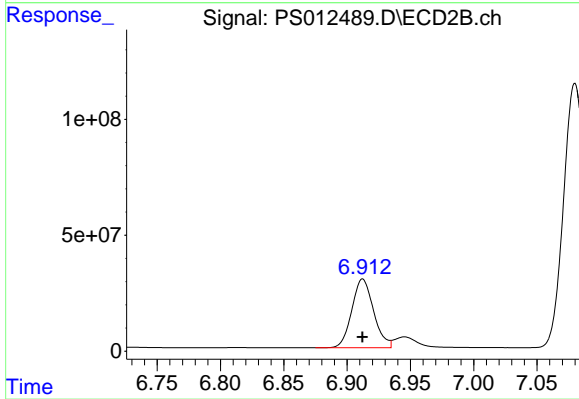
Instrument :
ECD_S
ClientSampleId :



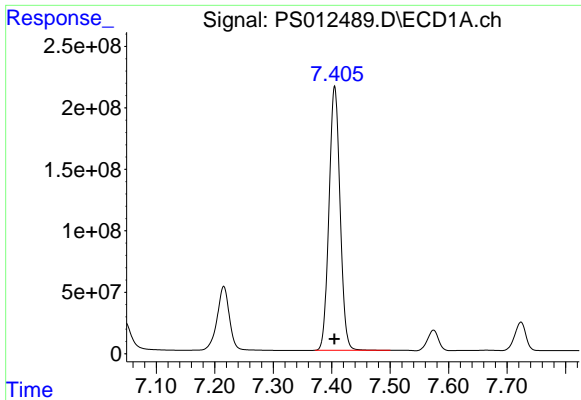
#3 4-Nitrophenol
R.T.: 6.521 min
Delta R.T.: 0.000 min
Response: 198472514
Conc: 710.33 ng/ml



#4 2,4-DCAA
R.T.: 7.215 min
Delta R.T.: 0.000 min
Response: 760456134
Conc: 776.41 ng/ml



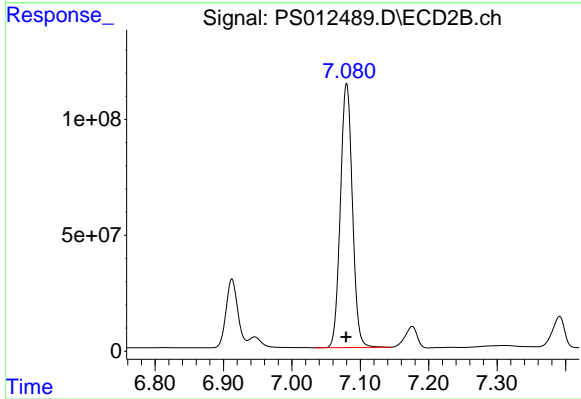
#4 2,4-DCAA
R.T.: 6.912 min
Delta R.T.: 0.000 min
Response: 354657561
Conc: 770.97 ng/ml



#5 DICAMBA

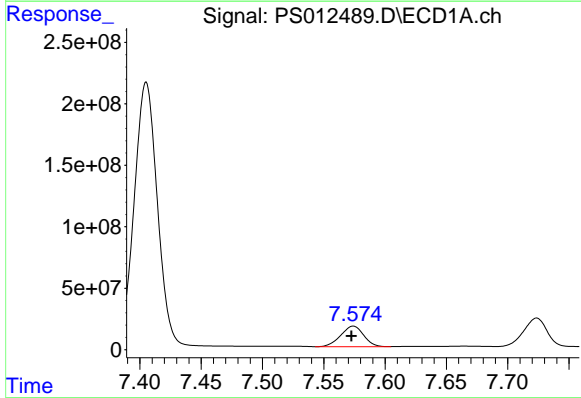
R.T.: 7.405 min
 Delta R.T.: 0.000 min
 Response: 2820723386
 Conc: 731.20 ng/ml

Instrument :
 ECD_S
 ClientSampled :



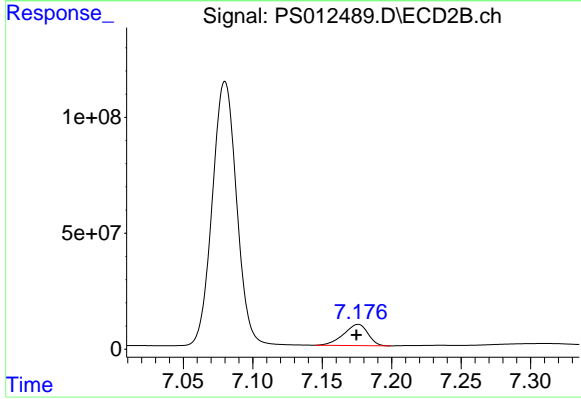
#5 DICAMBA

R.T.: 7.080 min
 Delta R.T.: 0.000 min
 Response: 1389868543
 Conc: 728.86 ng/ml



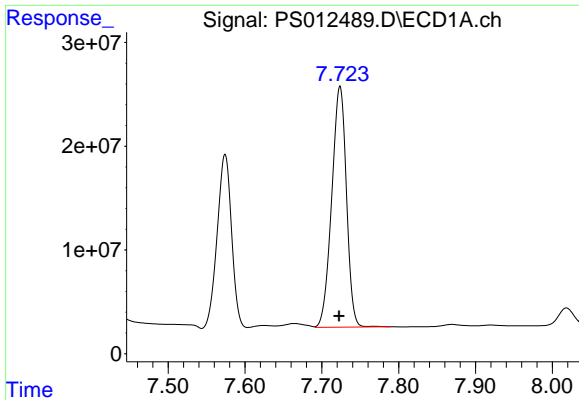
#6 MCPP

R.T.: 7.574 min
 Delta R.T.: 0.001 min
 Response: 218057774
 Conc: 74.74 ug/ml



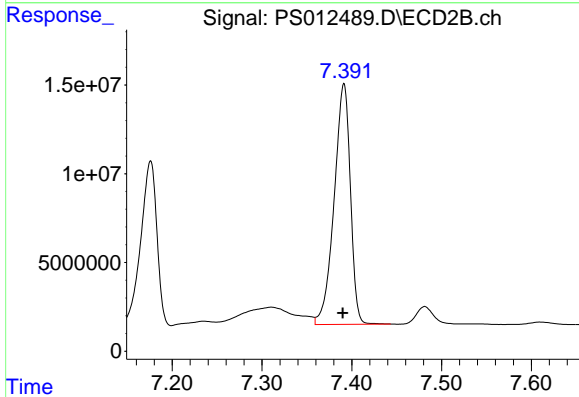
#6 MCPP

R.T.: 7.176 min
 Delta R.T.: 0.001 min
 Response: 111141817
 Conc: 73.47 ug/ml

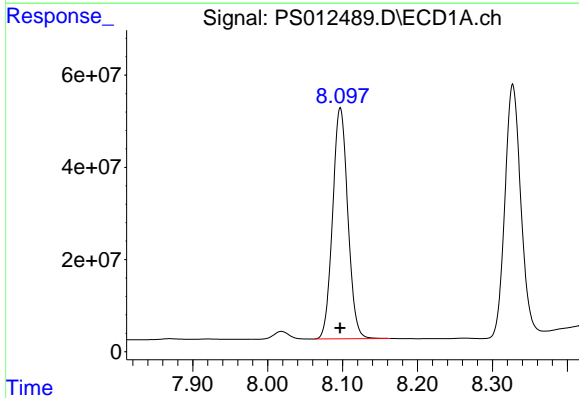


#7 MCPA
 R.T.: 7.724 min
 Delta R.T.: 0.001 min
 Response: 305958887
 Conc: 73.36 ug/ml

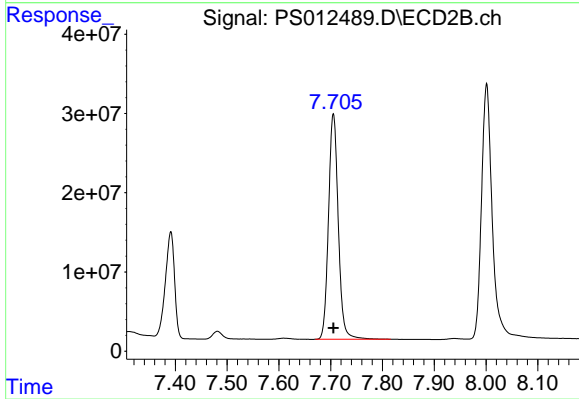
Instrument :
 ECD_S
 ClientSampleId :



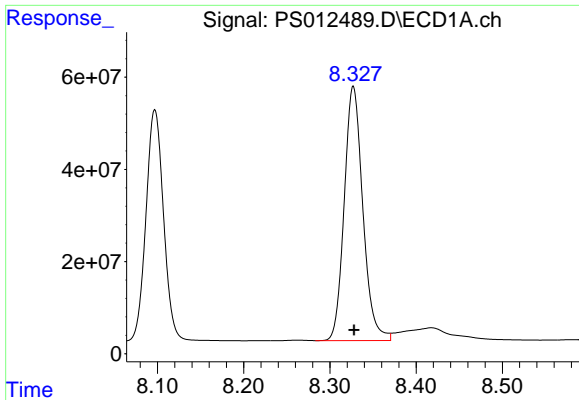
#7 MCPA
 R.T.: 7.391 min
 Delta R.T.: 0.002 min
 Response: 170410970
 Conc: 71.08 ug/ml



#8 DICHLORPROP
 R.T.: 8.097 min
 Delta R.T.: 0.000 min
 Response: 707054066
 Conc: 730.66 ng/ml



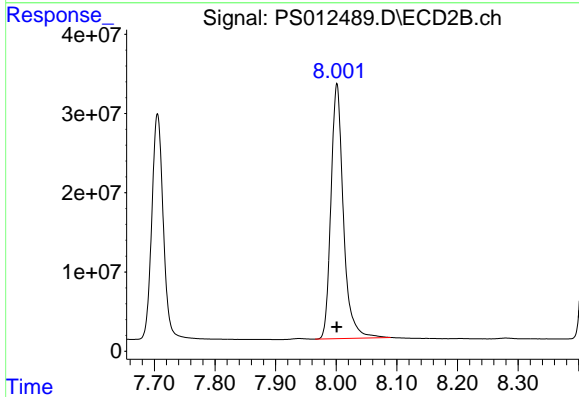
#8 DICHLORPROP
 R.T.: 7.705 min
 Delta R.T.: 0.000 min
 Response: 373356293
 Conc: 723.10 ng/ml



#9 2,4-D

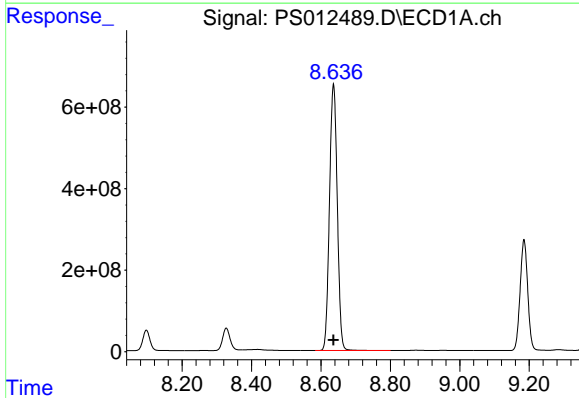
R.T.: 8.327 min
 Delta R.T.: 0.000 min
 Response: 829140983
 Conc: 730.25 ng/ml

Instrument :
 ECD_S
 ClientSampleId :



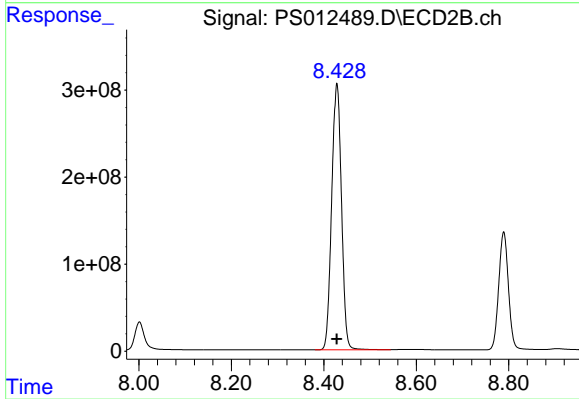
#9 2,4-D

R.T.: 8.001 min
 Delta R.T.: 0.000 min
 Response: 458523527
 Conc: 732.18 ng/ml



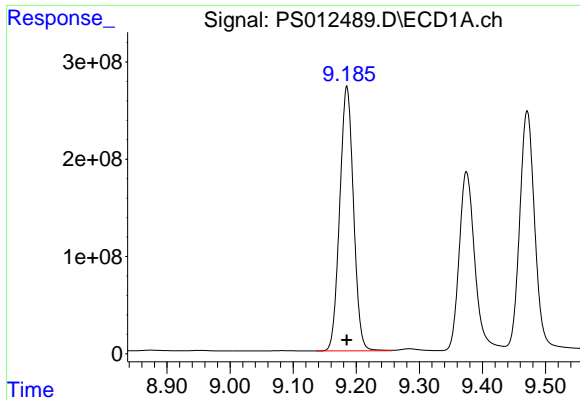
#10 Pentachlorophenol

R.T.: 8.636 min
 Delta R.T.: 0.000 min
 Response: 10160923609
 Conc: 735.24 ng/ml



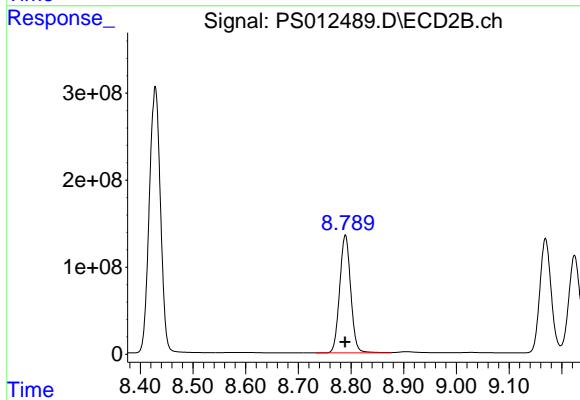
#10 Pentachlorophenol

R.T.: 8.429 min
 Delta R.T.: 0.000 min
 Response: 4513479522
 Conc: 739.99 ng/ml

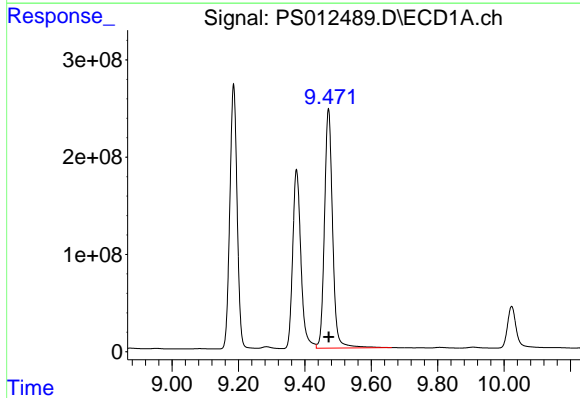


#11 2,4,5-TP (SILVEX)
 R.T.: 9.185 min
 Delta R.T.: 0.000 min
 Response: 4127018230
 Conc: 744.30 ng/ml

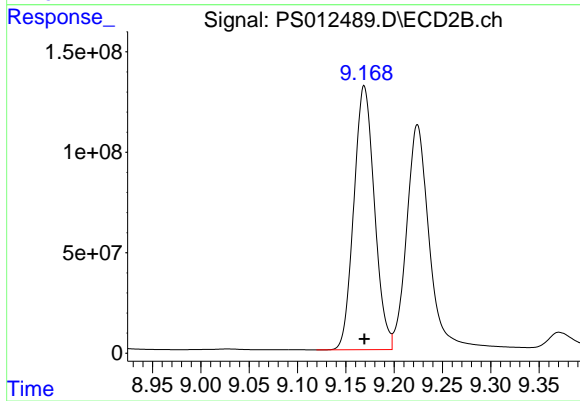
Instrument :
 ECD_S
 ClientSampled :



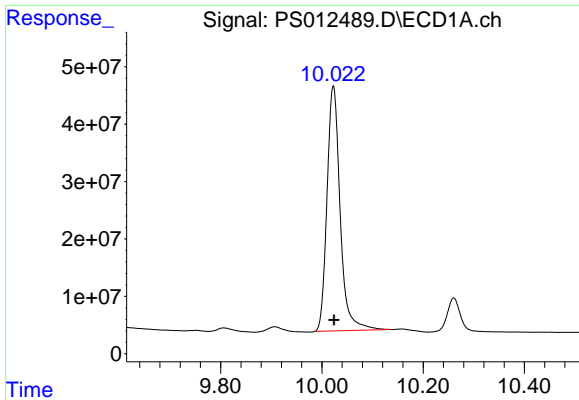
#11 2,4,5-TP (SILVEX)
 R.T.: 8.789 min
 Delta R.T.: 0.000 min
 Response: 1969147741
 Conc: 746.34 ng/ml



#12 2,4,5-T
 R.T.: 9.471 min
 Delta R.T.: 0.000 min
 Response: 4176510163
 Conc: 742.99 ng/ml

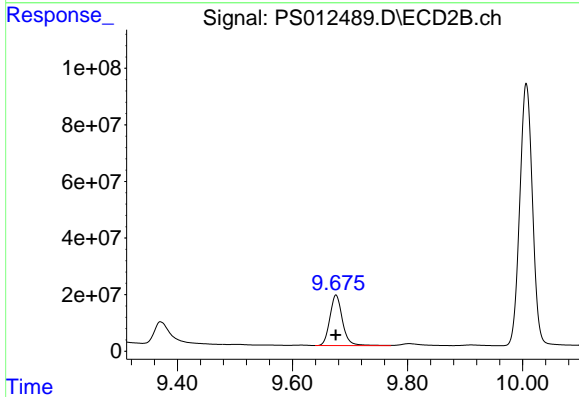


#12 2,4,5-T
 R.T.: 9.169 min
 Delta R.T.: 0.000 min
 Response: 1948497374
 Conc: 757.79 ng/ml

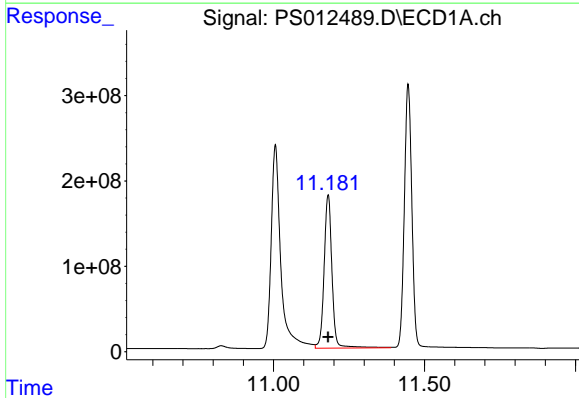


#13 2,4-DB
 R.T.: 10.023 min
 Delta R.T.: -0.001 min
 Response: 770765199
 Conc: 814.50 ng/ml

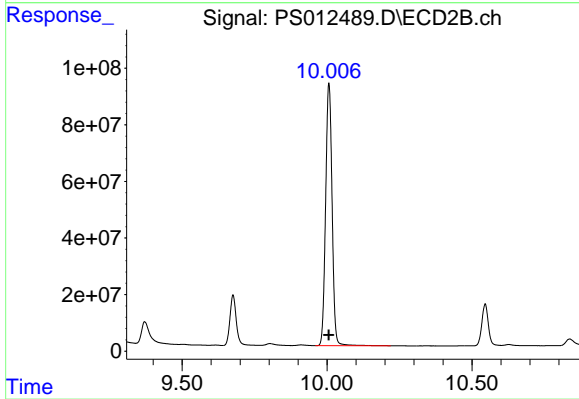
Instrument :
 ECD_S
 ClientSampled :



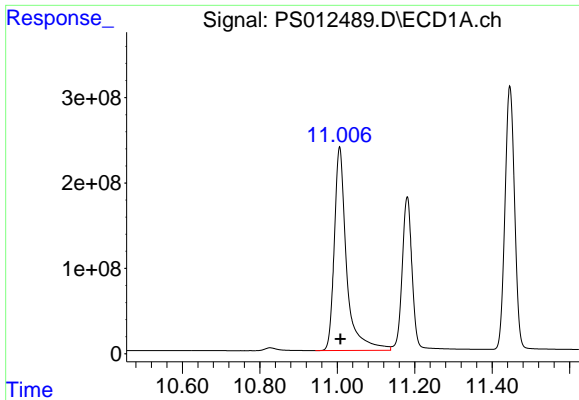
#13 2,4-DB
 R.T.: 9.676 min
 Delta R.T.: 0.000 min
 Response: 272825023
 Conc: 728.76 ng/ml



#14 DINOSEB
 R.T.: 11.181 min
 Delta R.T.: 0.000 min
 Response: 3257352679
 Conc: 717.44 ng/ml

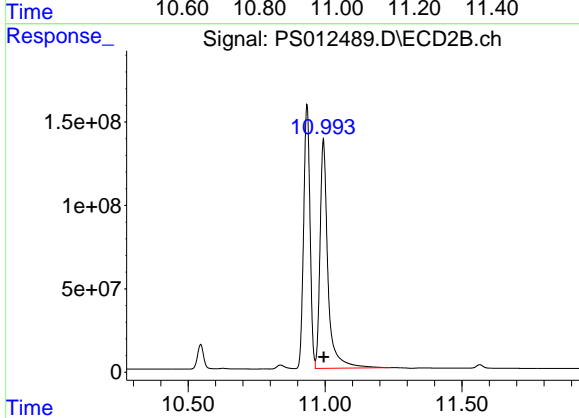


#14 DINOSEB
 R.T.: 10.006 min
 Delta R.T.: 0.000 min
 Response: 1428953110
 Conc: 746.02 ng/ml

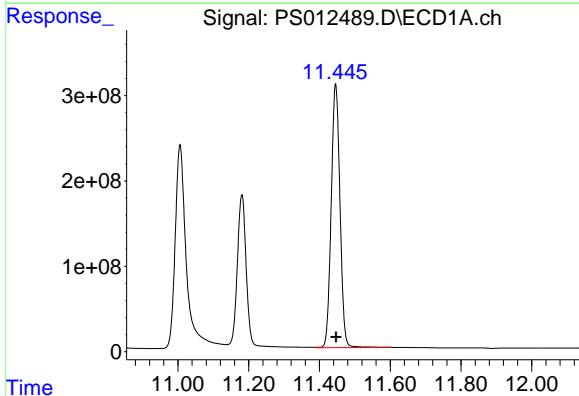


#15 Picloram
 R.T.: 11.006 min
 Delta R.T.: -0.003 min
 Response: 5264940531
 Conc: 731.23 ng/ml

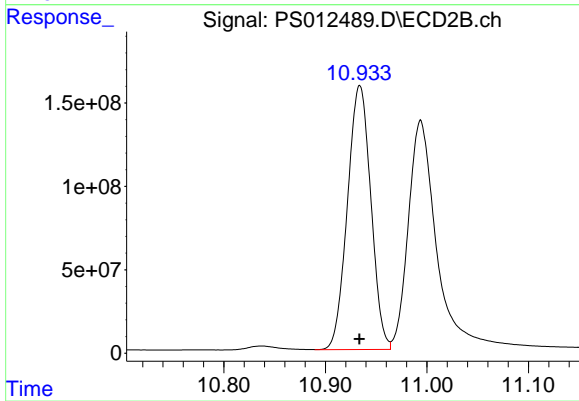
Instrument :
 ECD_S
 ClientSampled :



#15 Picloram
 R.T.: 10.994 min
 Delta R.T.: -0.001 min
 Response: 2764029576
 Conc: 701.28 ng/ml



#16 DCPA
 R.T.: 11.446 min
 Delta R.T.: 0.000 min
 Response: 5302070395
 Conc: 750.66 ng/ml



#16 DCPA
 R.T.: 10.934 min
 Delta R.T.: 0.000 min
 Response: 2540600274
 Conc: 763.99 ng/ml