

Data Path : Z:\pestpcbsrv\HPCHEM1\ECD_S\Data\PS092425\
 Data File : PS031834.D
 Signal(s) : Signal #1: ECD1A.ch Signal #2: ECD2B.ch
 Acq On : 24 Sep 2025 19:53
 Operator : AR\AJ
 Sample : Q3159-03MSD
 Misc :
 ALS Vial : 11 Sample Multiplier: 1

Instrument :
 ECD_S
 ClientSampleId :
 VNJ-255MSD

Integration File signal 1: autoint1.e
 Integration File signal 2: autoint2.e
 Quant Time: Sep 25 01:58:29 2025
 Quant Method : Z:\pestpcbsrv\HPCHEM1\ECD_S\Method\PS090925.M
 Quant Title : 8080.M
 QLast Update : Tue Sep 09 13:56:38 2025
 Response via : Initial Calibration
 Integrator: ChemStation

Volume Inj. : 1 µl
 Signal #1 Phase : ZB-MR2 Signal #2 Phase: ZB-MR2
 Signal #1 Info : 30M x 0.32mm x0.5 Signal #2 Info : 30M x 0.32mm x 0.25µm

Compound	RT#1	RT#2	Resp#1	Resp#2	ng/ml	ng/ml
System Monitoring Compounds						
4) S 2,4-DCAA	7.277	7.740	1436.3E6	194.4E6	398.809	213.914 #
Target Compounds						
1) T Dalapon	2.658	0.000	9223.0E6	0	1595.468	N.D. #
2) T 3,5-DICHL...	6.451	6.695	1019.9E6	240.9E6	191.235	157.982
3) T 4-Nitroph...	7.045f	7.280	9616816	35884858	8.717	28.417 #
5) T DICAMBA	7.467	7.938	4047.3E6	1938.6E6	259.500	297.932
6) T MCPP	7.643	8.041	28579936	23028278	3.197	12.227 #
7) T MCPA	7.793	8.280	250.6E6	35833310	22.554	12.792 #
8) T DICHLORPROP	8.174	8.656	566.4E6	364.9E6	159.020	250.762 #
9) T 2,4-D	8.406	8.994	1455.7E6	642.3E6	424.952	390.425
10) T Pentachlo...	8.705	9.506	2068.2E6	1394.5E6	38.953	35.135
11) T 2,4,5-TP ...	9.283	9.892	3872.5E6	5405.8E6	184.638	359.088 #
12) T 2,4,5-T	9.578	10.319	4646.2E6	3100.4E6	253.918	230.389
13) T 2,4-DB	10.180f	10.883	615.4E6	43085592	263.786	40.265 #
14) T DINOSEB	11.311f	11.276	30050534	266.8E6	2.084	27.450 #
15) T Picloram	11.177	12.380	4868.1E6	4978.6E6	270.283	210.215
16) T DCPA	11.649	12.304	9066.8E6	7378.4E6	336.430	306.105

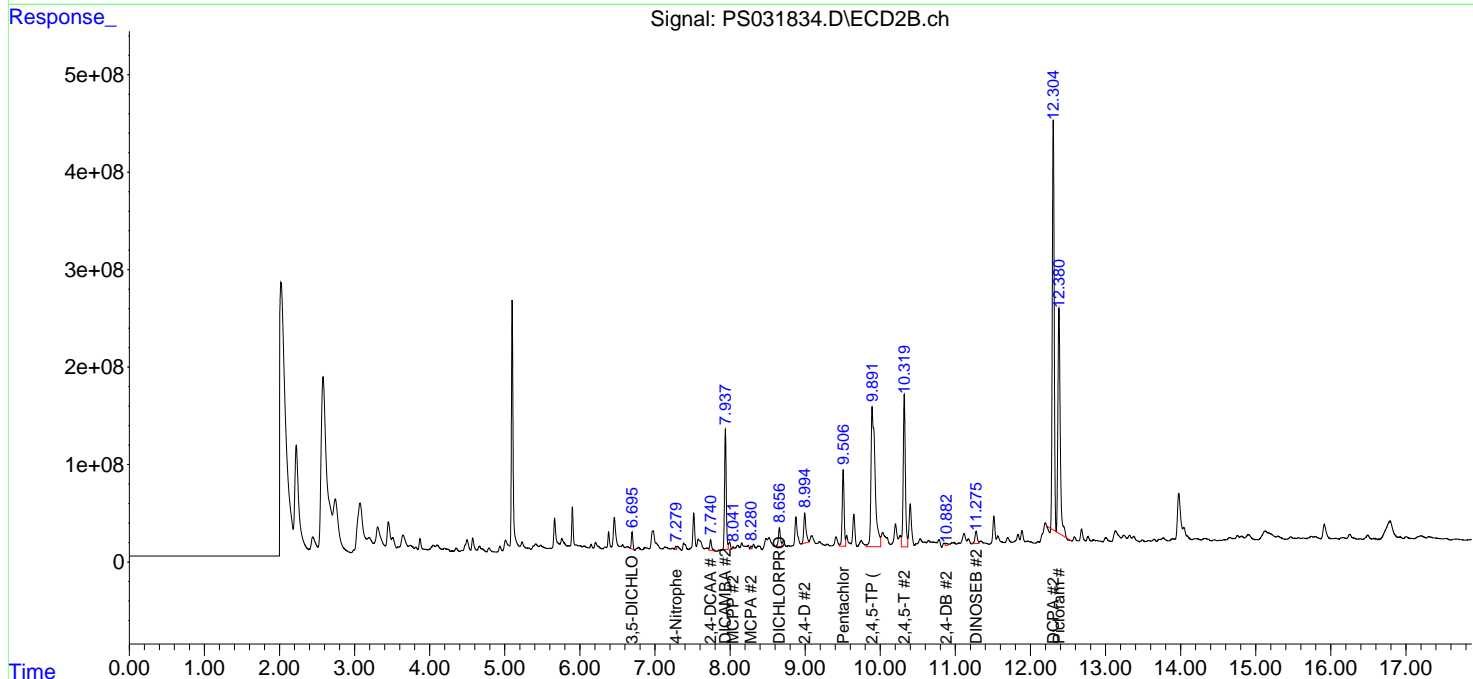
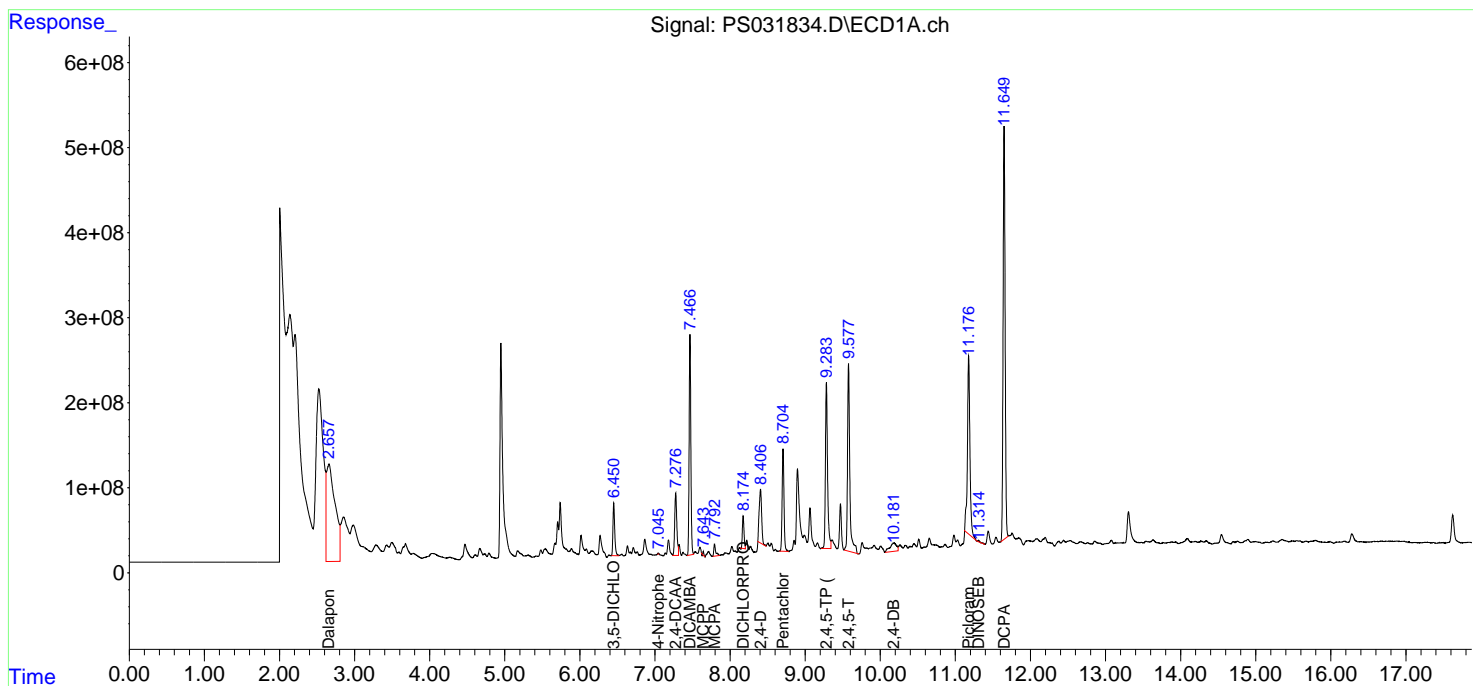
(f)=RT Delta > 1/2 Window (#)=Amounts differ by > 25% (m)=manual int.

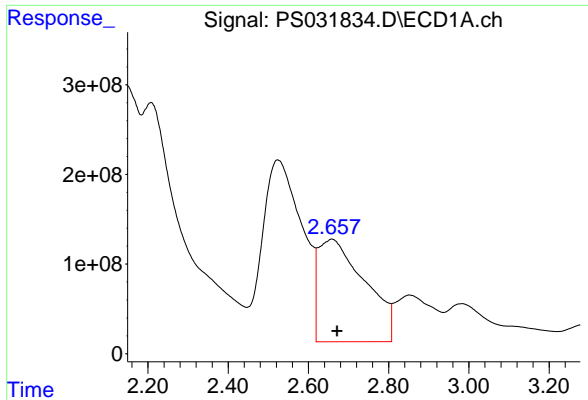
Data Path : Z:\pestpcbsrv\HPCHEM1\ECD_S\Data\PS092425\
 Data File : PS031834.D
 Signal(s) : Signal #1: ECD1A.ch Signal #2: ECD2B.ch
 Acq On : 24 Sep 2025 19:53
 Operator : AR\AJ
 Sample : Q3159-03MSD
 Misc :
 ALS Vial : 11 Sample Multiplier: 1

Instrument :
 ECD_S
 ClientSampleId :
 VNJ-255MSD

Integration File signal 1: autoint1.e
 Integration File signal 2: autoint2.e
 Quant Time: Sep 25 01:58:29 2025
 Quant Method : Z:\pestpcbsrv\HPCHEM1\ECD_S\Method\PS090925.M
 Quant Title : 8080.M
 QLast Update : Tue Sep 09 13:56:38 2025
 Response via : Initial Calibration
 Integrator: ChemStation

Volume Inj. : 1 µl
 Signal #1 Phase : ZB-MR1 Signal #2 Phase: ZB-MR2
 Signal #1 Info : 30M x 0.32mm x0.5 Signal #2 Info : 30M x 0.32mm x 0.25µm

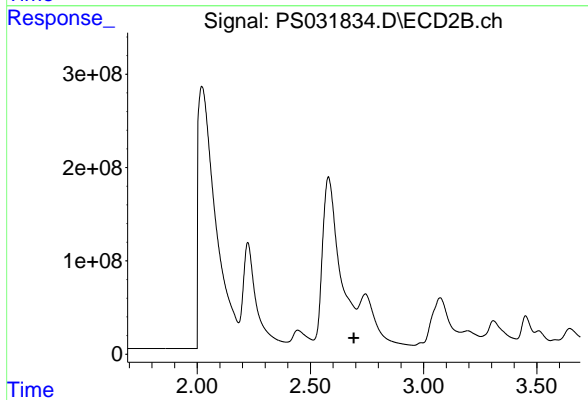




#1 Dalapon

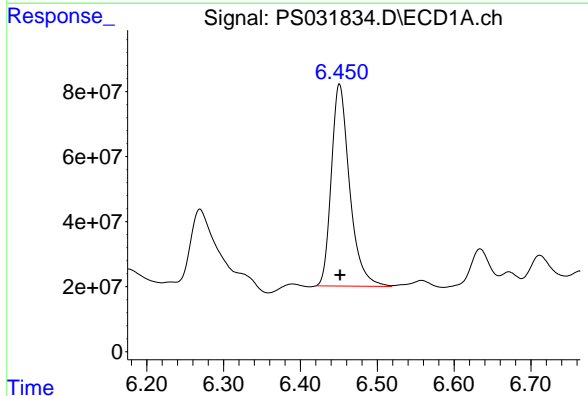
R.T.: 2.658 min
 Delta R.T.: -0.013 min
 Response: 9222990634
 Conc: 1595.47 ng/m

Instrument :
 ECD_S
 ClientSampleId :
 VNJ-255MSD



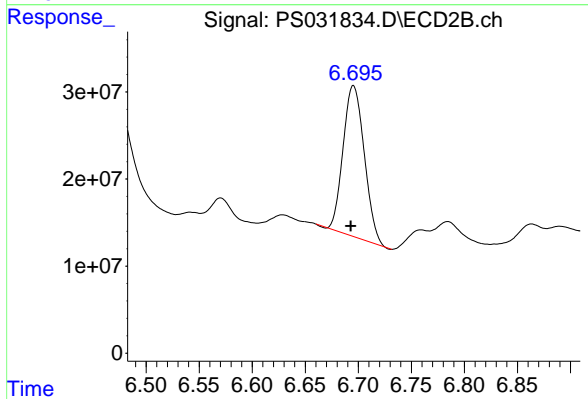
#1 Dalapon

R.T.: 0.000 min
 Exp R.T. : 2.692 min
 Response: 0
 Conc: N.D.



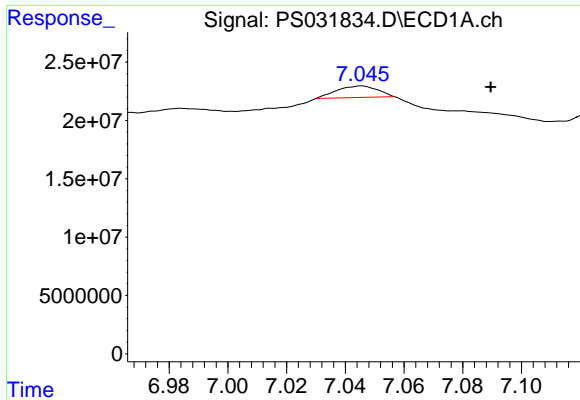
#2 3,5-DICHLOROBENZOIC ACID

R.T.: 6.451 min
 Delta R.T.: 0.000 min
 Response: 1019923459
 Conc: 191.23 ng/ml



#2 3,5-DICHLOROBENZOIC ACID

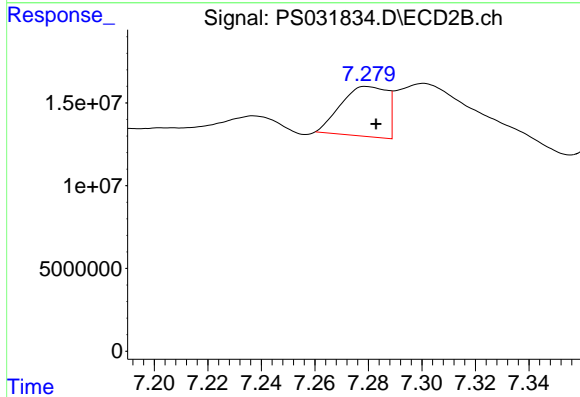
R.T.: 6.695 min
 Delta R.T.: 0.003 min
 Response: 240917450
 Conc: 157.98 ng/ml



#3 4-Nitrophenol

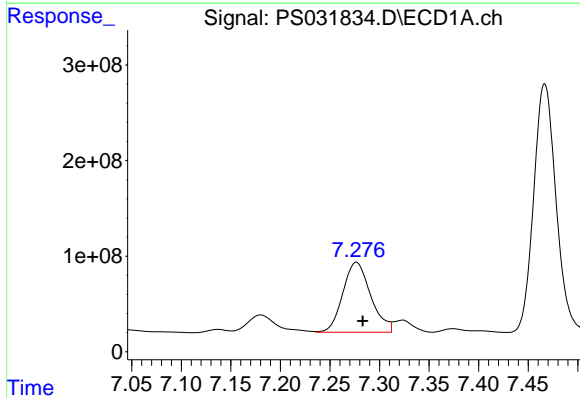
R.T.: 7.045 min
 Delta R.T.: -0.045 min
 Response: 9616816
 Conc: 8.72 ng/ml

Instrument :
 ECD_S
 ClientSampleId :
 VNJ-255MSD



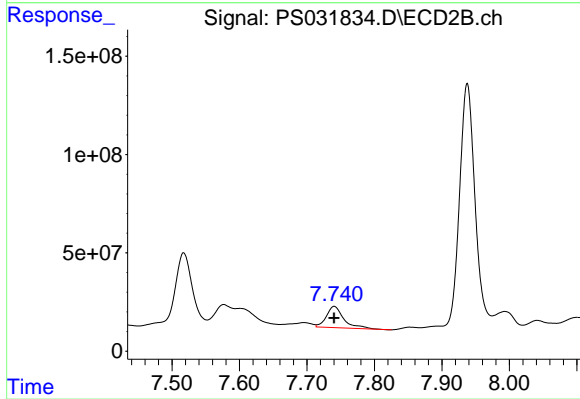
#3 4-Nitrophenol

R.T.: 7.280 min
 Delta R.T.: -0.003 min
 Response: 35884858
 Conc: 28.42 ng/ml



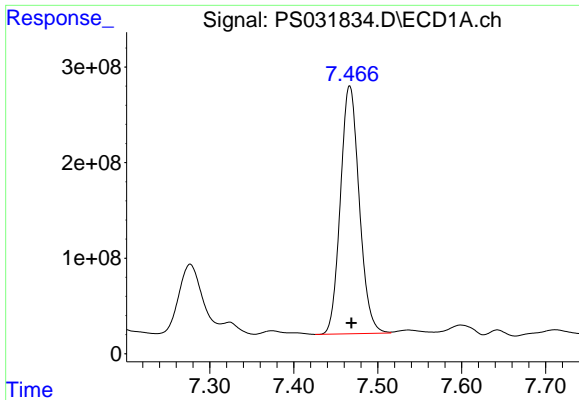
#4 2,4-DCAA

R.T.: 7.277 min
 Delta R.T.: -0.007 min
 Response: 1436321075
 Conc: 398.81 ng/ml



#4 2,4-DCAA

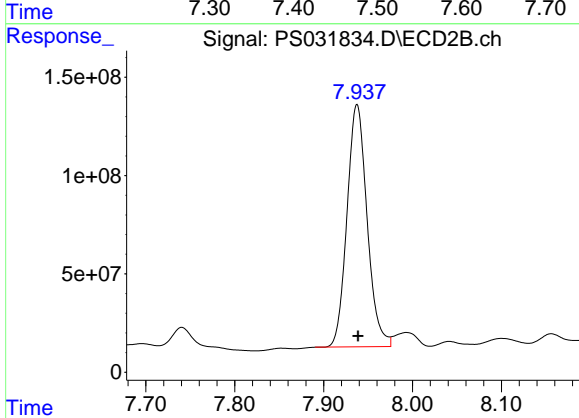
R.T.: 7.740 min
 Delta R.T.: 0.000 min
 Response: 194426750
 Conc: 213.91 ng/ml



#5 DICAMBA

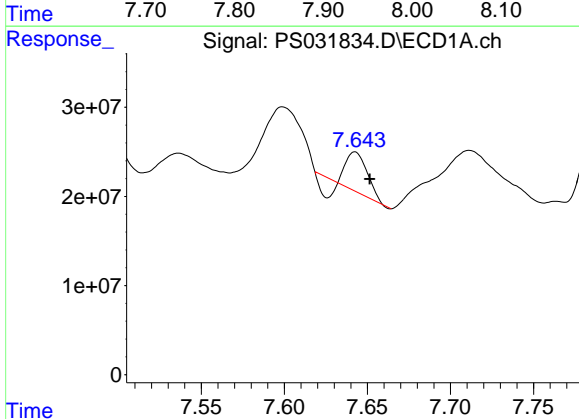
R.T.: 7.467 min
 Delta R.T.: -0.002 min
 Response: 4047341108
 Conc: 259.50 ng/ml

Instrument :
 ECD_S
 ClientSampleId :
 VNJ-255MSD



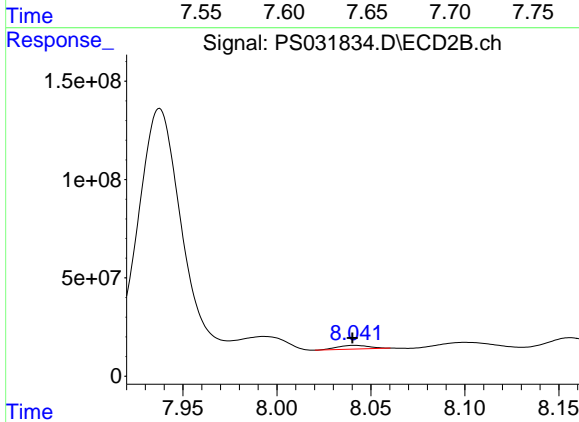
#5 DICAMBA

R.T.: 7.938 min
 Delta R.T.: -0.001 min
 Response: 1938598576
 Conc: 297.93 ng/ml



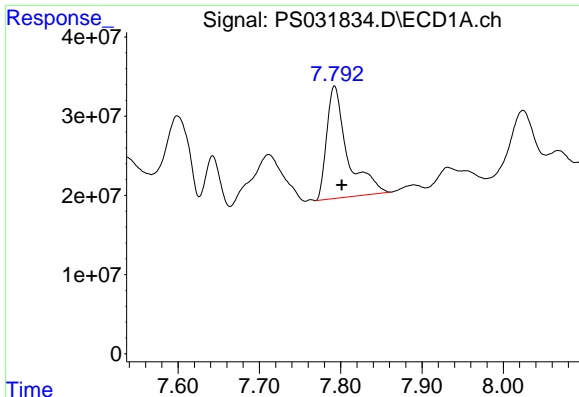
#6 MCPP

R.T.: 7.643 min
 Delta R.T.: -0.009 min
 Response: 28579936
 Conc: 3.20 ug/ml



#6 MCPP

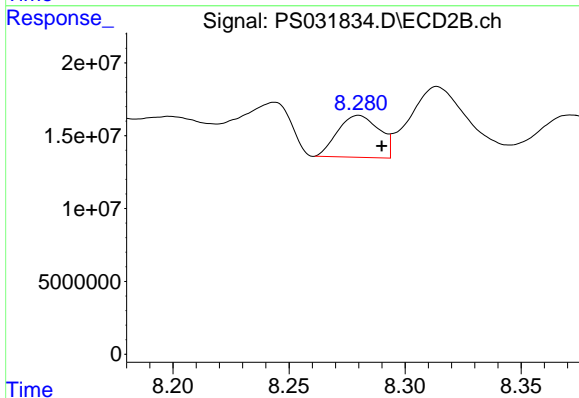
R.T.: 8.041 min
 Delta R.T.: 0.001 min
 Response: 23028278
 Conc: 12.23 ug/ml



#7 MCPA

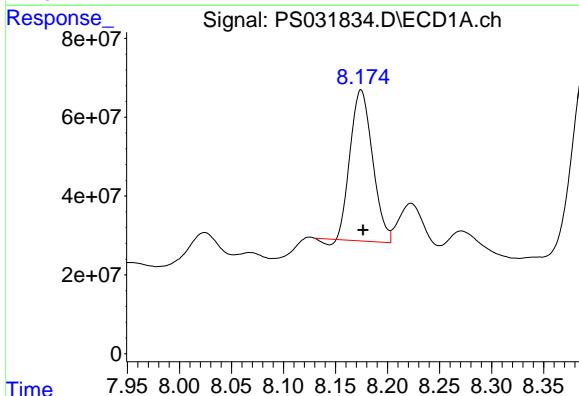
R.T.: 7.793 min
 Delta R.T.: -0.009 min
 Response: 250583412
 Conc: 22.55 ug/ml

Instrument :
 ECD_S
 ClientSampleId :
 VNJ-255MSD



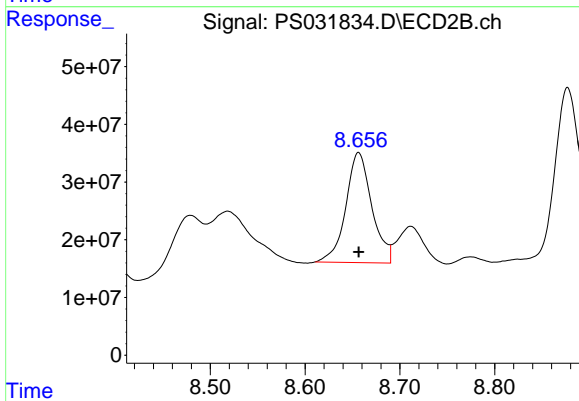
#7 MCPA

R.T.: 8.280 min
 Delta R.T.: -0.010 min
 Response: 35833310
 Conc: 12.79 ug/ml



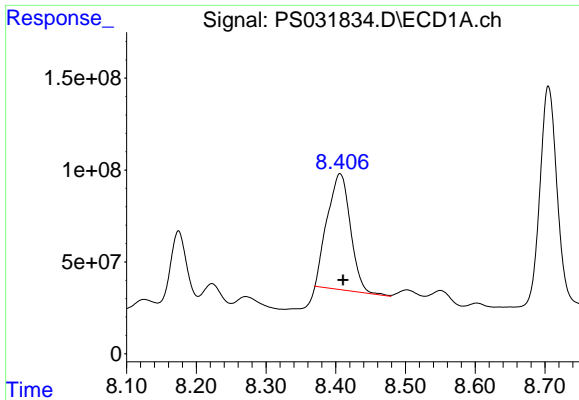
#8 DICHLORPROP

R.T.: 8.174 min
 Delta R.T.: -0.002 min
 Response: 566391437
 Conc: 159.02 ng/ml



#8 DICHLORPROP

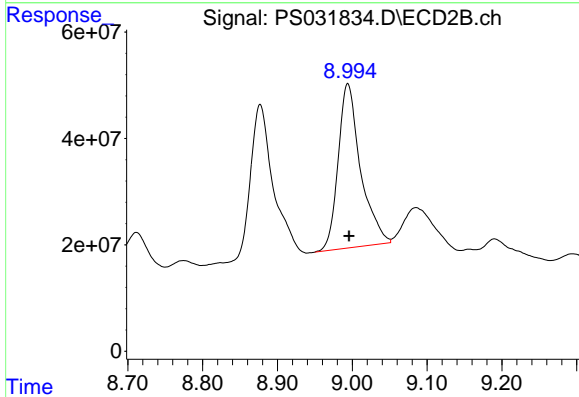
R.T.: 8.656 min
 Delta R.T.: 0.000 min
 Response: 364874319
 Conc: 250.76 ng/ml



#9 2,4-D

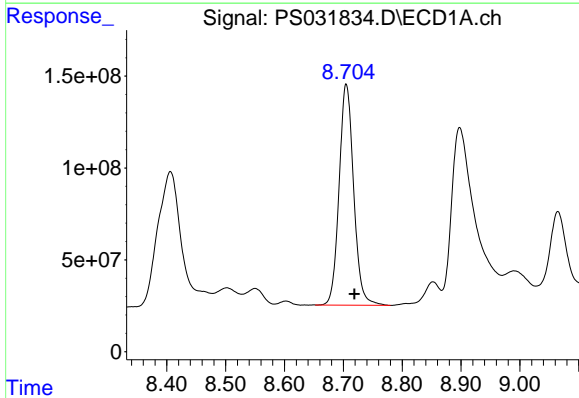
R.T.: 8.406 min
 Delta R.T.: -0.004 min
 Response: 1455733089
 Conc: 424.95 ng/ml

Instrument :
 ECD_S
 ClientSampleId :
 VNJ-255MSD



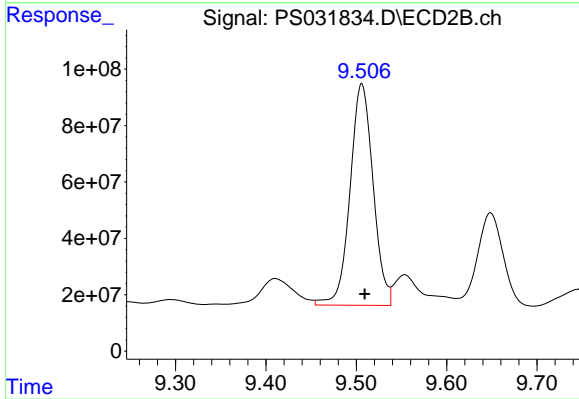
#9 2,4-D

R.T.: 8.994 min
 Delta R.T.: -0.002 min
 Response: 642292856
 Conc: 390.43 ng/ml



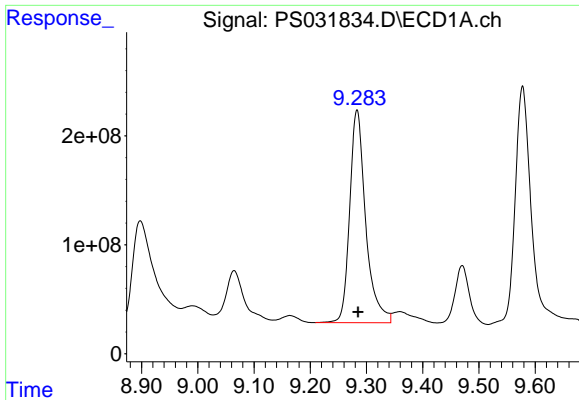
#10 Pentachlorophenol

R.T.: 8.705 min
 Delta R.T.: -0.014 min
 Response: 2068168749
 Conc: 38.95 ng/ml



#10 Pentachlorophenol

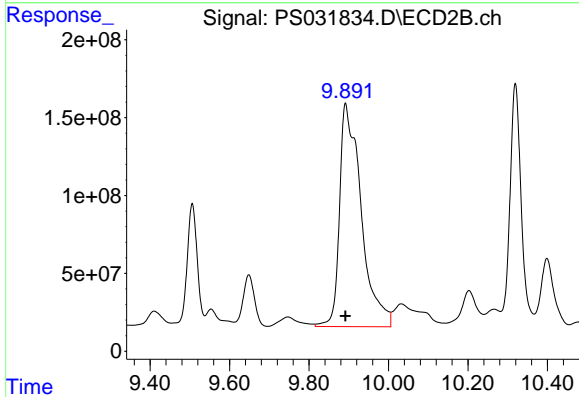
R.T.: 9.506 min
 Delta R.T.: -0.003 min
 Response: 1394538974
 Conc: 35.14 ng/ml



#11 2,4,5-TP (SILVEX)

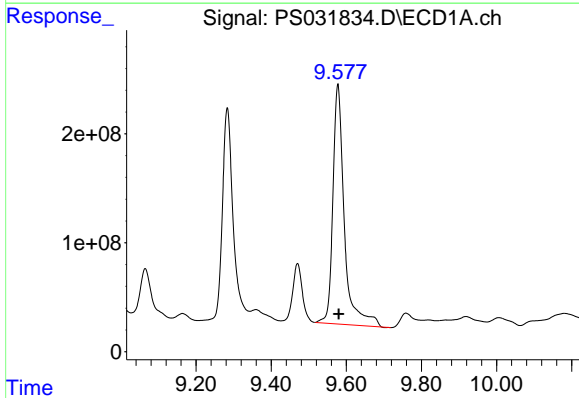
R.T.: 9.283 min
 Delta R.T.: -0.002 min
 Response: 3872531939
 Conc: 184.64 ng/ml

Instrument :
 ECD_S
 ClientSampleId :
 VNJ-255MSD



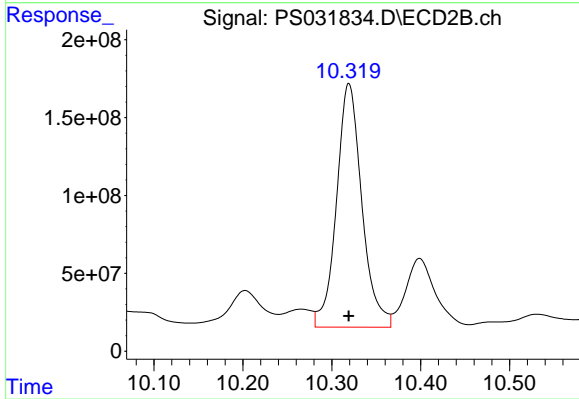
#11 2,4,5-TP (SILVEX)

R.T.: 9.892 min
 Delta R.T.: 0.000 min
 Response: 5405831419
 Conc: 359.09 ng/ml



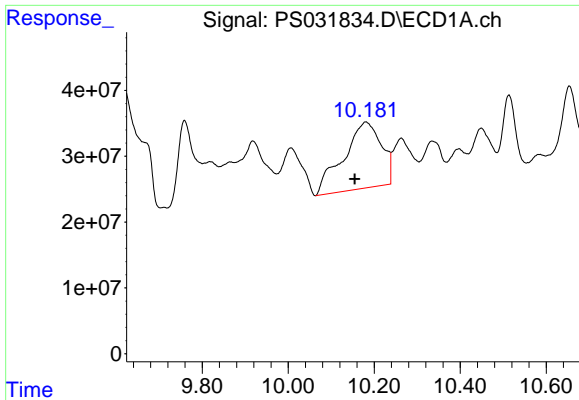
#12 2,4,5-T

R.T.: 9.578 min
 Delta R.T.: -0.002 min
 Response: 4646233146
 Conc: 253.92 ng/ml



#12 2,4,5-T

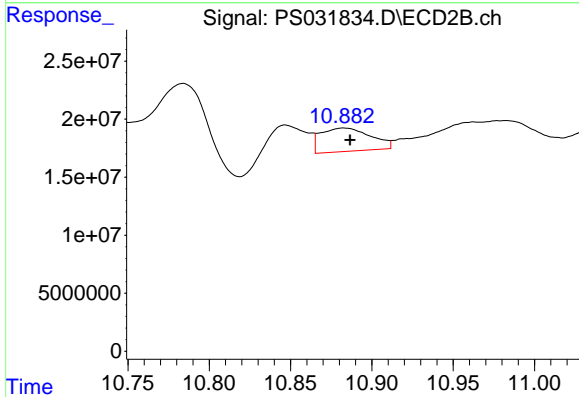
R.T.: 10.319 min
 Delta R.T.: 0.000 min
 Response: 3100354364
 Conc: 230.39 ng/ml



#13 2,4-DB

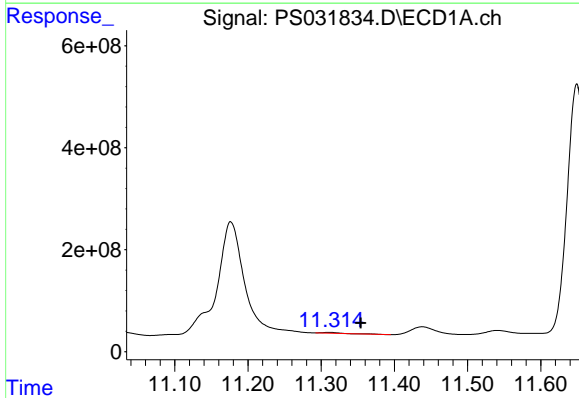
R.T.: 10.180 min
 Delta R.T.: 0.026 min
 Response: 615351888
 Conc: 263.79 ng/ml

Instrument :
 ECD_S
 ClientSampleId :
 VNJ-255MSD



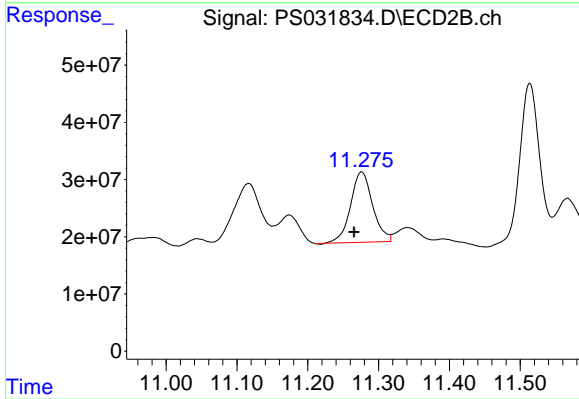
#13 2,4-DB

R.T.: 10.883 min
 Delta R.T.: -0.004 min
 Response: 43085592
 Conc: 40.27 ng/ml



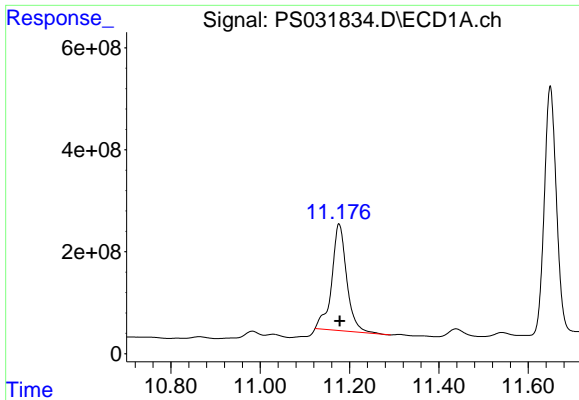
#14 DINOSEB

R.T.: 11.311 min
 Delta R.T.: -0.043 min
 Response: 30050534
 Conc: 2.08 ng/ml



#14 DINOSEB

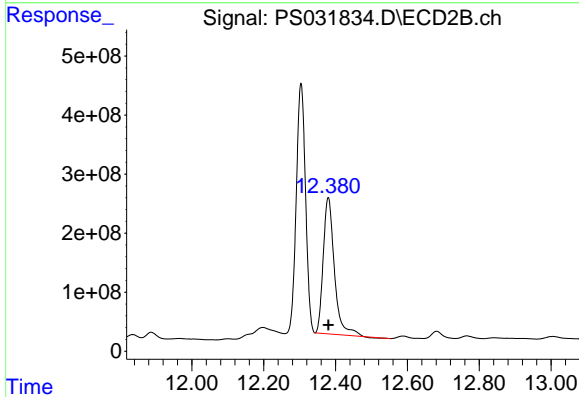
R.T.: 11.276 min
 Delta R.T.: 0.011 min
 Response: 266830517
 Conc: 27.45 ng/ml



#15 Picloram

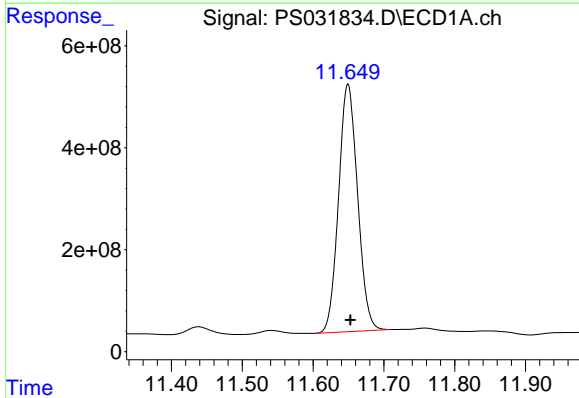
R.T.: 11.177 min
 Delta R.T.: -0.001 min
 Response: 4868094996
 Conc: 270.28 ng/ml

Instrument :
 ECD_S
 ClientSampleId :
 VNJ-255MSD



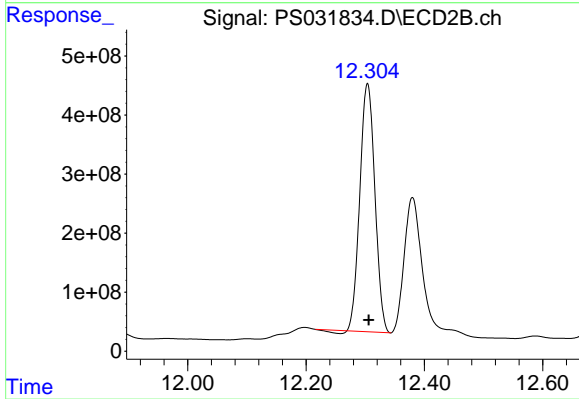
#15 Picloram

R.T.: 12.380 min
 Delta R.T.: 0.000 min
 Response: 4978575627
 Conc: 210.22 ng/ml



#16 DCPA

R.T.: 11.649 min
 Delta R.T.: -0.003 min
 Response: 9066764419
 Conc: 336.43 ng/ml



#16 DCPA

R.T.: 12.304 min
 Delta R.T.: -0.002 min
 Response: 7378395060
 Conc: 306.11 ng/ml