

Data Path : Z:\pestpcbsrv\HPCHEM1\ECD_S\Data\PS092425\
 Data File : PS031835.D
 Signal(s) : Signal #1: ECD1A.ch Signal #2: ECD2B.ch
 Acq On : 24 Sep 2025 20:17
 Operator : AR\AJ
 Sample : Q3167-01
 Misc :
 ALS Vial : 12 Sample Multiplier: 1

Instrument :
 ECD_S
 ClientSampleId :
 RT4784

Integration File signal 1: autoint1.e
 Integration File signal 2: autoint2.e
 Quant Time: Sep 25 01:58:40 2025
 Quant Method : Z:\pestpcbsrv\HPCHEM1\ECD_S\Method\PS090925.M
 Quant Title : 8080.M
 QLast Update : Tue Sep 09 13:56:38 2025
 Response via : Initial Calibration
 Integrator: ChemStation

Volume Inj. : 1 µl
 Signal #1 Phase : ZB-MR2 Signal #2 Phase: ZB-MR2
 Signal #1 Info : 30M x 0.32mm x0.5 Signal #2 Info : 30M x 0.32mm x 0.25µm

Compound	RT#1	RT#2	Resp#1	Resp#2	ng/ml	ng/ml
System Monitoring Compounds						
4) S 2,4-DCAA	7.283	7.747	118.8E6	28244937	32.984	31.076
Target Compounds						
1) T Dalapon	0.000	2.660f	0	804.4E6	N.D.	285.493
2) T 3,5-DICHL...	6.440	0.000	15405795	0	2.889	N.D. #
3) T 4-Nitroph...	7.086	7.278	-1289516	5927166	N.D.	4.694
5) T DICAMBA	7.478	7.979f	12442125	10703145	<MDL	1.645 #
6) T MCPP	7.609f	0.000	3676395	0	<MDL	N.D. #
7) T MCPA	7.816	8.260f	64564256	115.8E6	5.811	41.323 #
8) T DICHLORPROP	8.158	8.649	4761356	8392018	1.337	5.767 #
9) T 2,4-D	8.439f	9.033f	79091069	-2299879	23.088	N.D. #
10) T Pentachlo...	8.706	9.507	5198455	22292485	<MDL	<MDL #
11) T 2,4,5-TP ...	9.254f	9.876	7750494	315.8E6	<MDL	20.976 #
12) T 2,4,5-T	9.592	10.292f	194.6E6	278.5E6	10.633	20.695 #
13) T 2,4-DB	10.183f	10.921f	169.4E6	-2698338	72.602	N.D. #
14) T DINOSEB	11.317f	11.281	127.5E6	42713379	8.840	4.394 #
15) T Picloram	11.147f	12.398	46906083	-44391901	2.604	N.D. #
16) T DCPA	11.638	0.000	37443301	0	1.389	N.D. #

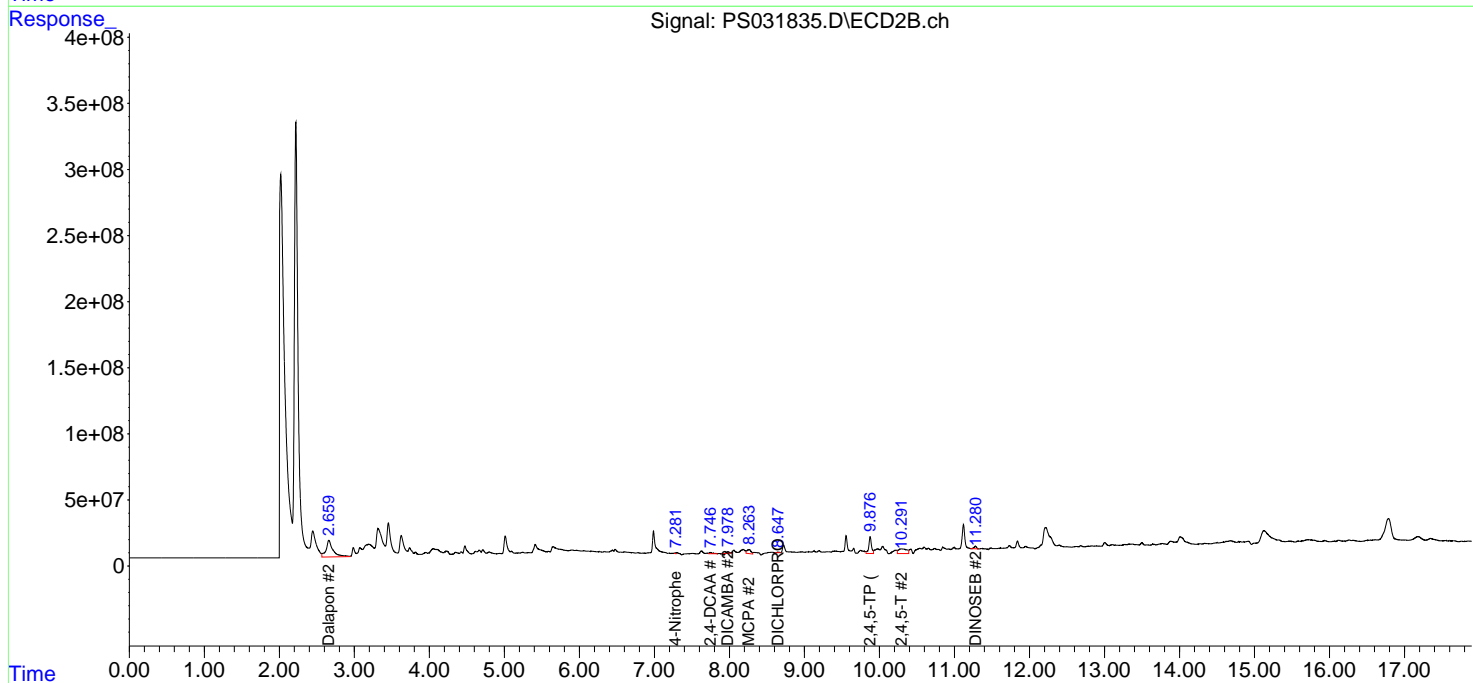
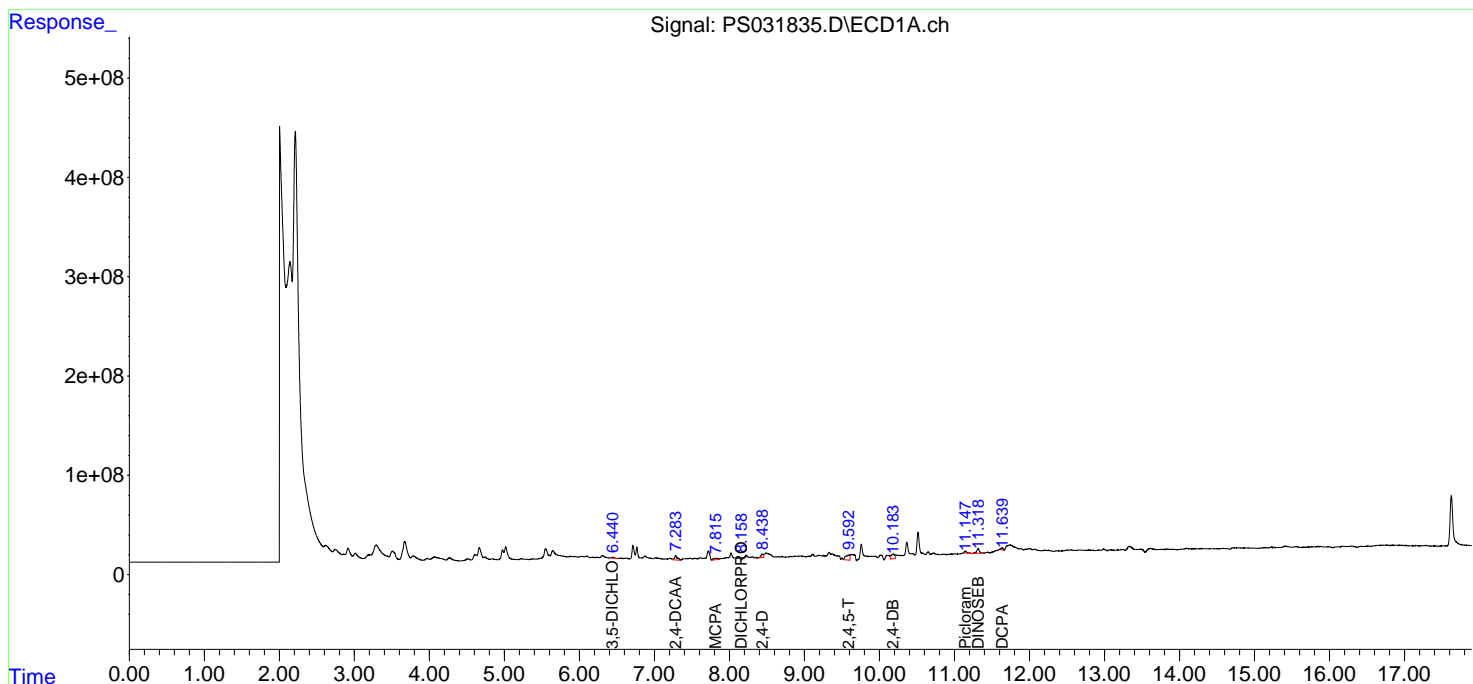
(f)=RT Delta > 1/2 Window (#)=Amounts differ by > 25% (m)=manual int.

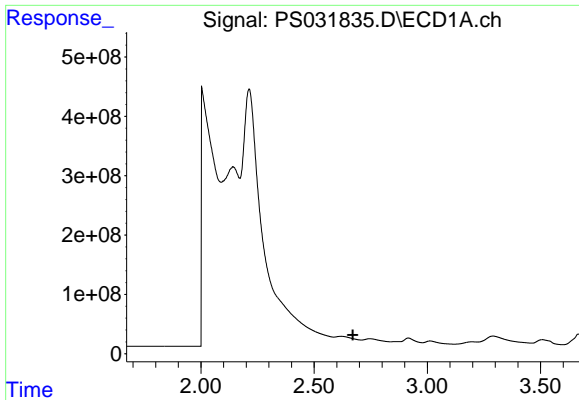
Data Path : Z:\pestpcbsrv\HPCHEM1\ECD_S\Data\PS092425\
 Data File : PS031835.D
 Signal(s) : Signal #1: ECD1A.ch Signal #2: ECD2B.ch
 Acq On : 24 Sep 2025 20:17
 Operator : AR\AJ
 Sample : Q3167-01
 Misc :
 ALS Vial : 12 Sample Multiplier: 1

Instrument :
 ECD_S
 ClientSampleId :
 RT4784

Integration File signal 1: autoint1.e
 Integration File signal 2: autoint2.e
 Quant Time: Sep 25 01:58:40 2025
 Quant Method : Z:\pestpcbsrv\HPCHEM1\ECD_S\Method\PS090925.M
 Quant Title : 8080.M
 QLast Update : Tue Sep 09 13:56:38 2025
 Response via : Initial Calibration
 Integrator: ChemStation

Volume Inj. : 1 µl
 Signal #1 Phase : ZB-MR1 Signal #2 Phase: ZB-MR2
 Signal #1 Info : 30M x 0.32mm x0.5 Signal #2 Info : 30M x 0.32mm x 0.25µm

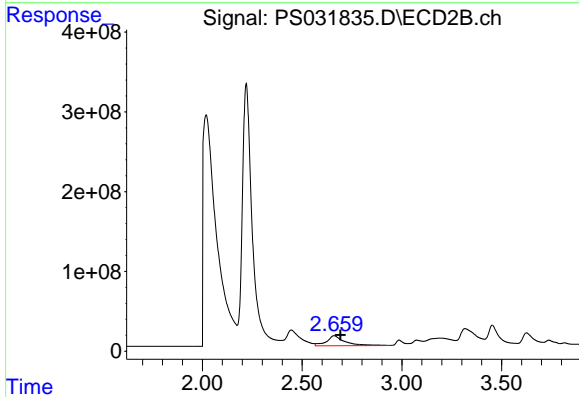




#1 Dalapon

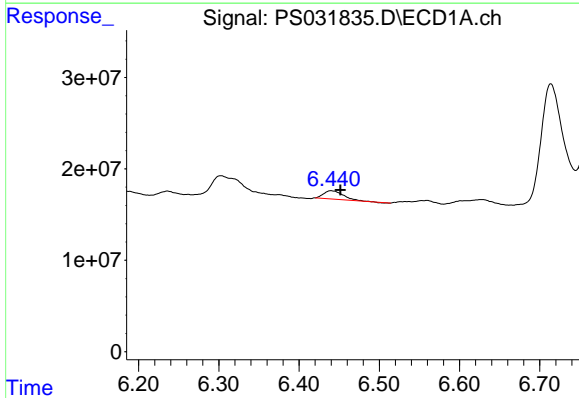
R.T.: 0.000 min
 Exp R.T.: 2.671 min
 Response: 0
 Conc: N.D.

Instrument :
 ECD_S
 ClientSampleId :
 RT4784



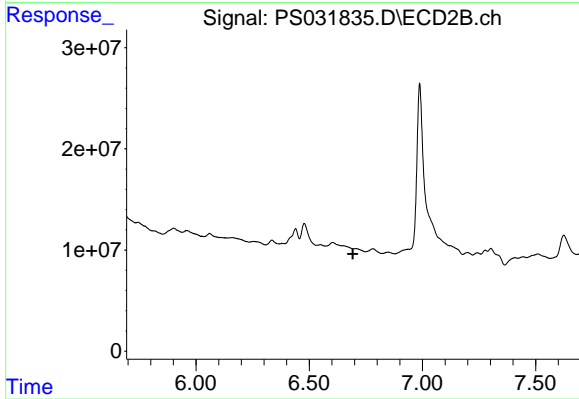
#1 Dalapon

R.T.: 2.660 min
 Delta R.T.: -0.032 min
 Response: 804413000
 Conc: 285.49 ng/ml



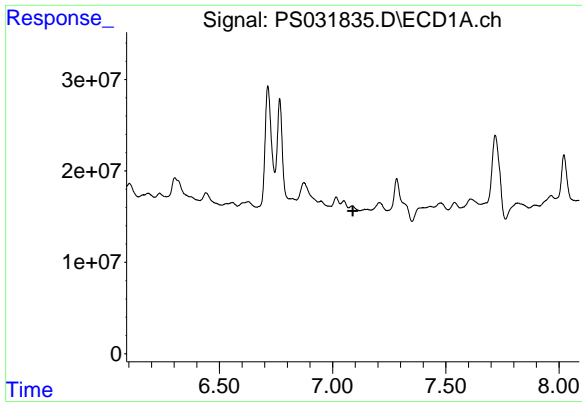
#2 3,5-DICHLOROBENZOIC ACID

R.T.: 6.440 min
 Delta R.T.: -0.012 min
 Response: 15405795
 Conc: 2.89 ng/ml



#2 3,5-DICHLOROBENZOIC ACID

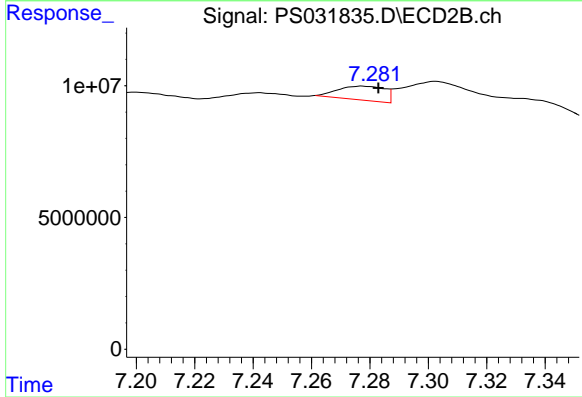
R.T.: 0.000 min
 Exp R.T.: 6.693 min
 Response: 0
 Conc: N.D.



#3 4-Nitrophenol

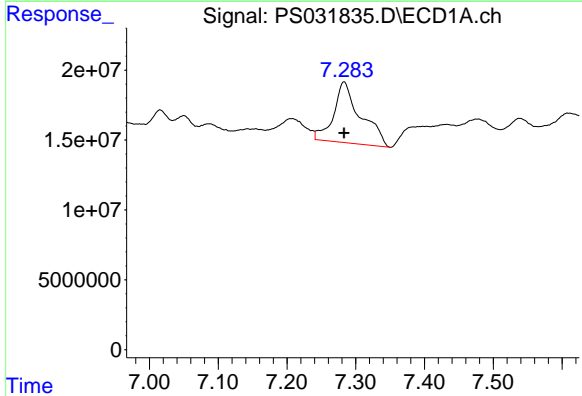
R.T.: 7.086 min
 Delta R.T.: -0.003 min
 Response: -1289516
 Conc: N.D.

Instrument :
 ECD_S
 ClientSampleId :
 RT4784



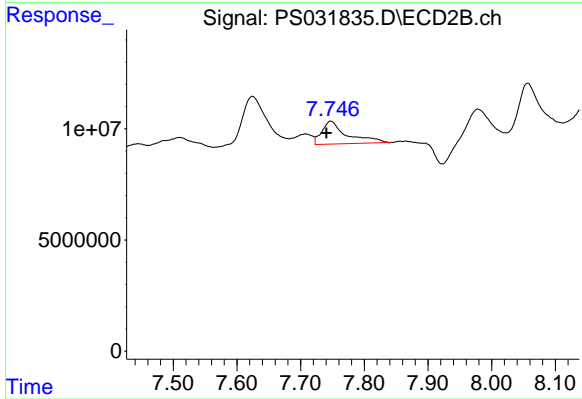
#3 4-Nitrophenol

R.T.: 7.278 min
 Delta R.T.: -0.005 min
 Response: 5927166
 Conc: 4.69 ng/ml



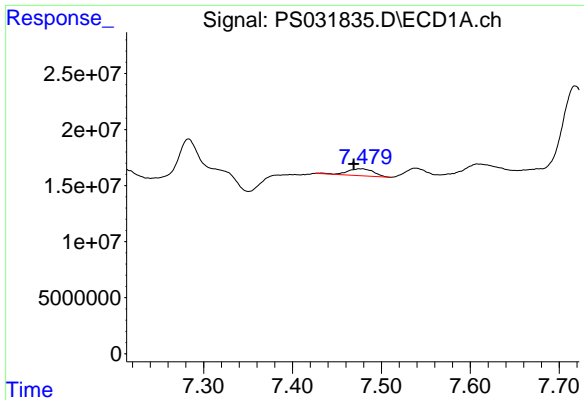
#4 2,4-DCAA

R.T.: 7.283 min
 Delta R.T.: 0.000 min
 Response: 118792385
 Conc: 32.98 ng/ml



#4 2,4-DCAA

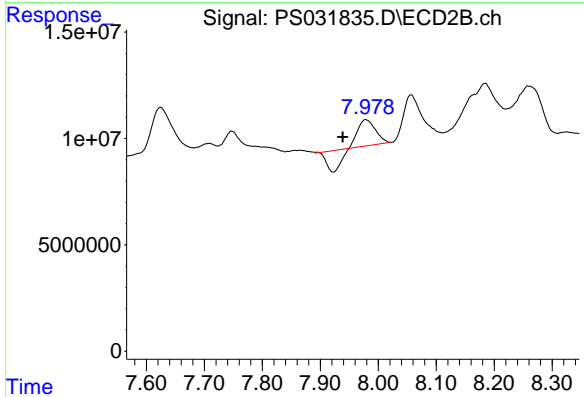
R.T.: 7.747 min
 Delta R.T.: 0.007 min
 Response: 28244937
 Conc: 31.08 ng/ml



#5 DICAMBA

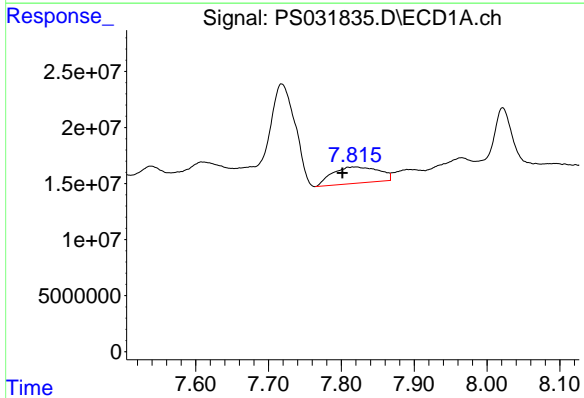
R.T.: 7.478 min
 Delta R.T.: 0.009 min
 Response: 12442125
 Conc: N.D.

Instrument :
 ECD_S
 ClientSampleId :
 RT4784



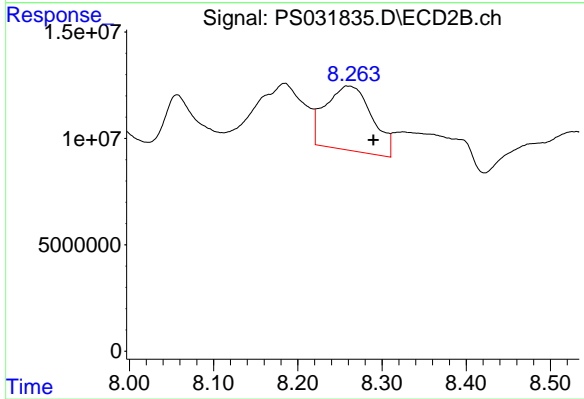
#5 DICAMBA

R.T.: 7.979 min
 Delta R.T.: 0.040 min
 Response: 10703145
 Conc: 1.64 ng/ml



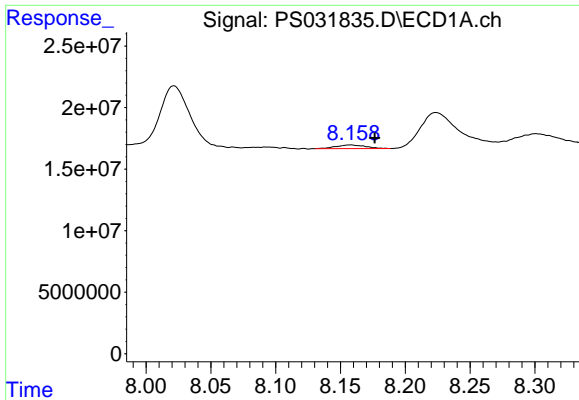
#7 MCPA

R.T.: 7.816 min
 Delta R.T.: 0.015 min
 Response: 64564256
 Conc: 5.81 ug/ml



#7 MCPA

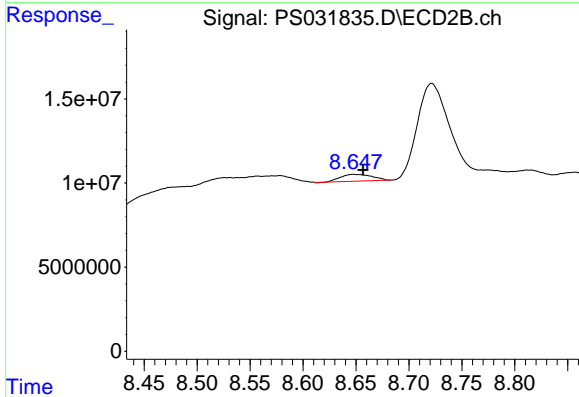
R.T.: 8.260 min
 Delta R.T.: -0.030 min
 Response: 115755254
 Conc: 41.32 ug/ml



#8 DICHLORPROP

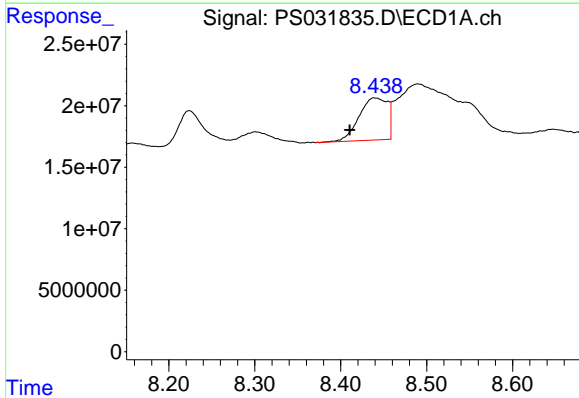
R.T.: 8.158 min
 Delta R.T.: -0.018 min
 Response: 4761356
 Conc: 1.34 ng/ml

Instrument :
 ECD_S
 ClientSampleId :
 RT4784



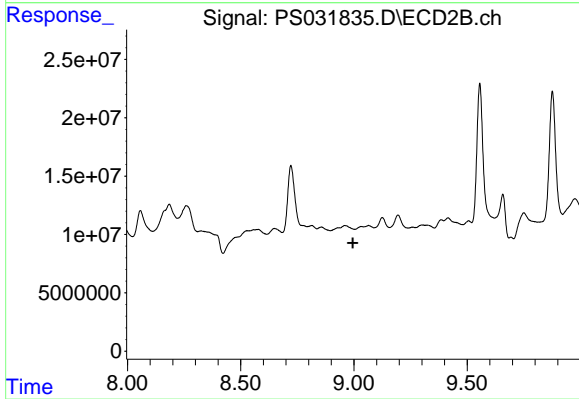
#8 DICHLORPROP

R.T.: 8.649 min
 Delta R.T.: -0.008 min
 Response: 8392018
 Conc: 5.77 ng/ml



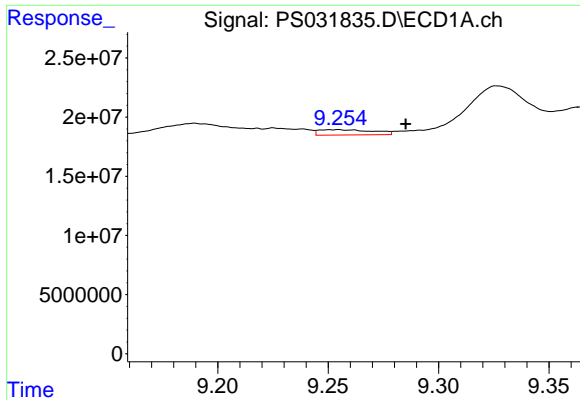
#9 2,4-D

R.T.: 8.439 min
 Delta R.T.: 0.029 min
 Response: 79091069
 Conc: 23.09 ng/ml



#9 2,4-D

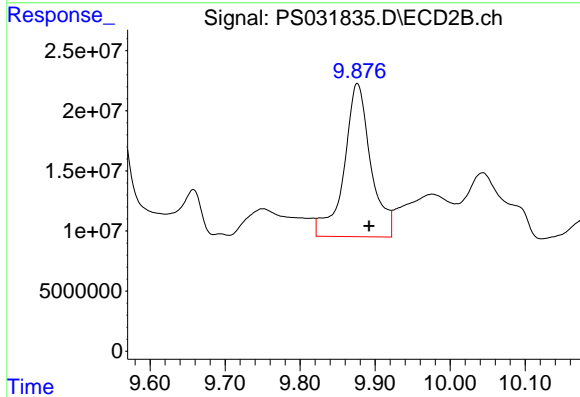
R.T.: 9.033 min
 Delta R.T.: 0.037 min
 Response: -2299879
 Conc: N.D.



#11 2,4,5-TP (SILVEX)

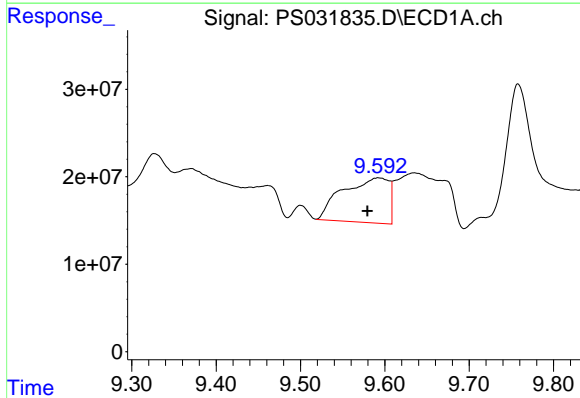
R.T.: 9.254 min
 Delta R.T.: -0.031 min
 Response: 7750494
 Conc: N.D.

Instrument :
 ECD_S
 ClientSampleId :
 RT4784



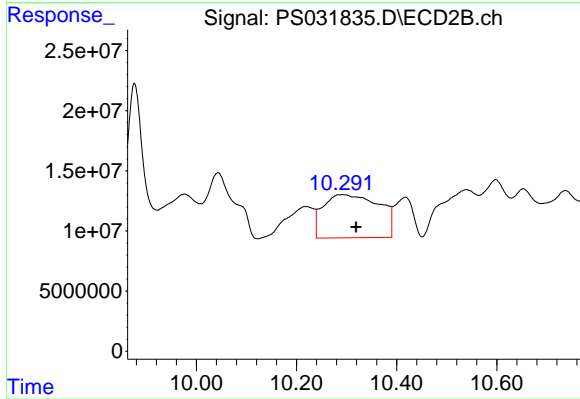
#11 2,4,5-TP (SILVEX)

R.T.: 9.876 min
 Delta R.T.: -0.015 min
 Response: 315778271
 Conc: 20.98 ng/ml



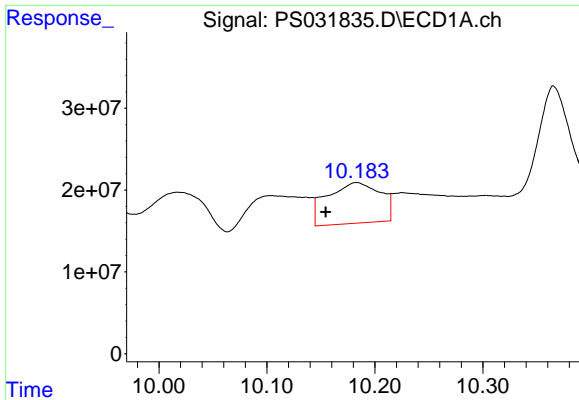
#12 2,4,5-T

R.T.: 9.592 min
 Delta R.T.: 0.013 min
 Response: 194567205
 Conc: 10.63 ng/ml



#12 2,4,5-T

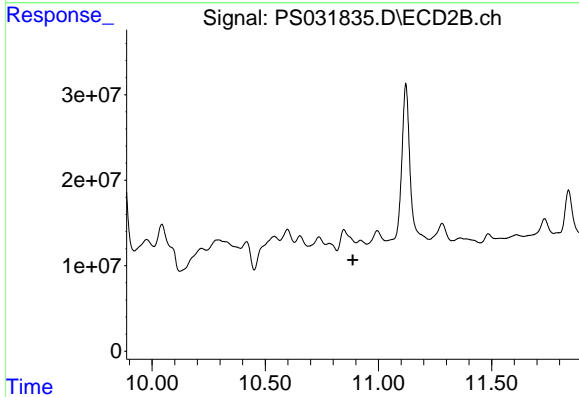
R.T.: 10.292 min
 Delta R.T.: -0.027 min
 Response: 278495913
 Conc: 20.70 ng/ml



#13 2,4-DB

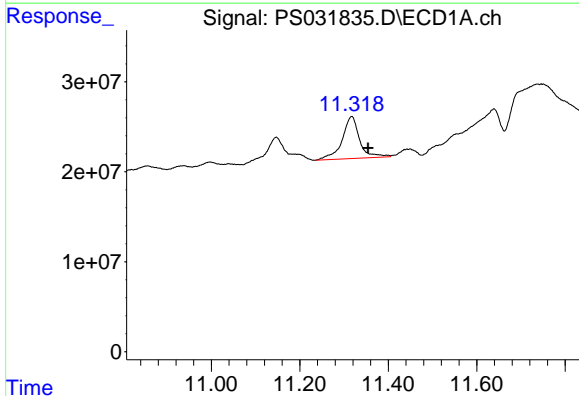
R.T.: 10.183 min
 Delta R.T.: 0.029 min
 Response: 169363719
 Conc: 72.60 ng/ml

Instrument :
 ECD_S
 ClientSampleId :
 RT4784



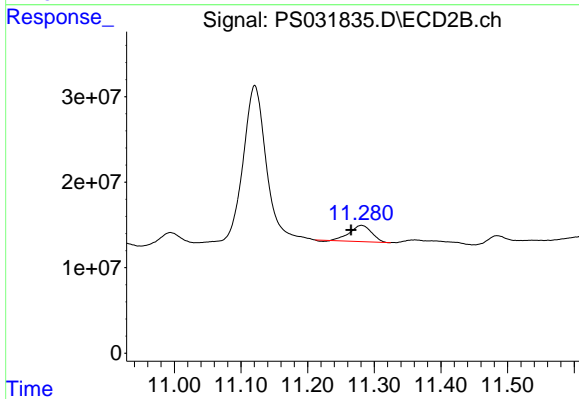
#13 2,4-DB

R.T.: 10.921 min
 Delta R.T.: 0.034 min
 Response: -2698338
 Conc: N.D.



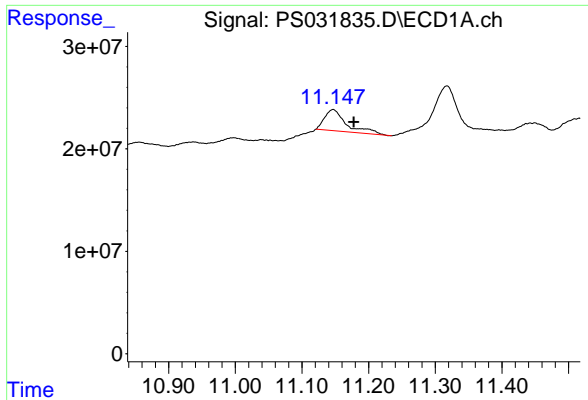
#14 DINOSEB

R.T.: 11.317 min
 Delta R.T.: -0.037 min
 Response: 127493484
 Conc: 8.84 ng/ml



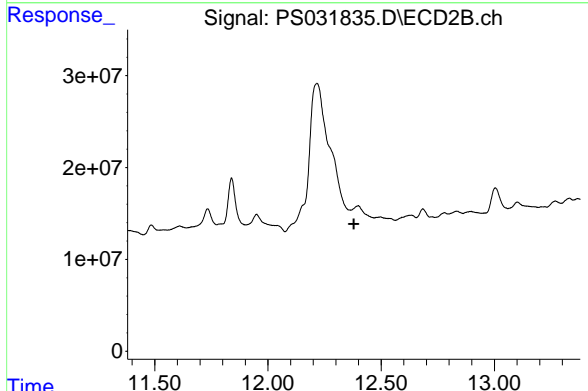
#14 DINOSEB

R.T.: 11.281 min
 Delta R.T.: 0.015 min
 Response: 42713379
 Conc: 4.39 ng/ml

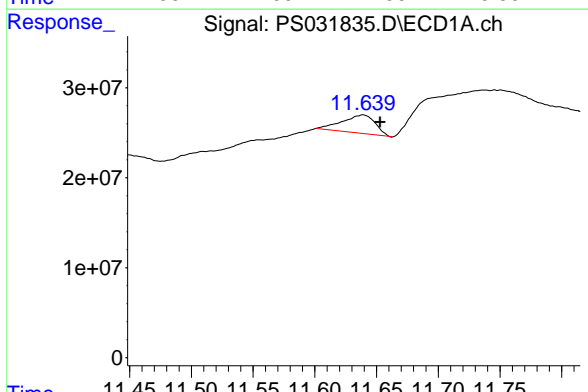


#15 Picloram
 R.T.: 11.147 min
 Delta R.T.: -0.031 min
 Response: 46906083
 Conc: 2.60 ng/ml

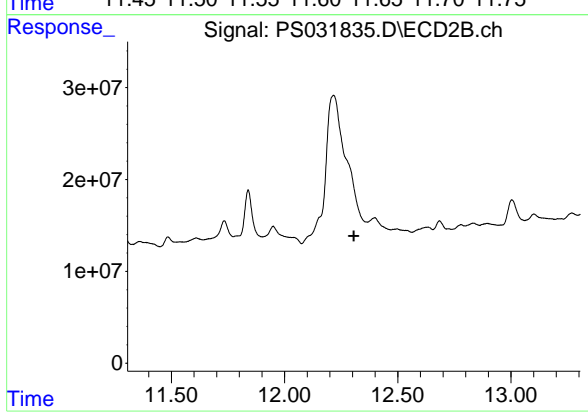
Instrument :
 ECD_S
 ClientSampleId :
 RT4784



#15 Picloram
 R.T.: 12.398 min
 Delta R.T.: 0.018 min
 Response: -44391901
 Conc: N.D.



#16 DCPA
 R.T.: 11.638 min
 Delta R.T.: -0.014 min
 Response: 37443301
 Conc: 1.39 ng/ml



#16 DCPA
 R.T.: 0.000 min
 Exp R.T. : 12.306 min
 Response: 0
 Conc: N.D.