

Data Path : Z:\pestpcbsrv\HPCHEM1\ECD_S\Data\PS092520\
 Data File : PS012519.D
 Signal(s) : Signal #1: ECD1A.ch Signal #2: ECD2B.ch
 Acq On : 25 Sep 2020 23:10
 Operator : DD\AJ
 Sample : L3871-25
 Misc :
 ALS Vial : 22 Sample Multiplier: 1

Instrument :
 ECD_S
 ClientSampleId :

Integration File signal 1: autoint1.e
 Integration File signal 2: autoint2.e
 Quant Time: Sep 26 02:12:45 2020
 Quant Method : Z:\pestpcbsrv\HPCHEM1\ECD_S\Method\PS092220.M
 Quant Title : 8080.M
 QLast Update : Wed Sep 23 04:57:25 2020
 Response via : Initial Calibration
 Integrator: ChemStation

Volume Inj. : 2 µl
 Signal #1 Phase : Rtx-CLPesticides Signal #2 Phase: Rtx-CLPesticides2
 Signal #1 Info : 30M x 0.32mm x0.5 Signal #2 Info : 30M x 0.32mm x 0.25µm

	Compound	RT#1	RT#2	Resp#1	Resp#2	ng/ml	ng/ml

System Monitoring Compounds							
4) S	2,4-DCAA	7.215	6.912	319.3E6	124.0E6	325.970	269.449
Target Compounds							
2) T	3,5-DICHL...	0.000	6.094	0	60727582	N.D.	85.177
3) T	4-Nitroph...	6.989	0.000	22441749	0	46.151	N.D. #
5) T	DICAMBA	7.340	7.045	86321134	8425292	22.376	4.418 #
6) T	MCPD	7.570	7.119	17616498	2289732	6.038	1.514 #
7) T	MCPA	7.698	7.401	11671963	40263936	2.799	16.796 #
8) T	DICHLORPROP	8.111	7.708	33026696	20787453	34.129	40.260
9) T	2,4-D	8.299	0.000	11200448	0	9.865	N.D. #
10) T	Pentachlo...	8.686	8.427	39524594	55600	2.860	<MDL #
11) T	2,4,5-TP ...	0.000	8.760	0	14103968	N.D.	5.346
12) T	2,4,5-T	9.406	9.162	32868301	23052905	5.847	8.966 #
13) T	2,4-DB	10.029	9.692	6490160	38248637	6.858	102.168 #
14) T	DINOSEB	11.153	10.023	71424129	29512517	15.731	15.408
15) T	Picloram	10.980	11.009	59397877	20694809	8.250	5.251 #
16) T	DCPA	11.468	10.932	31703979	18347638	4.489	5.517

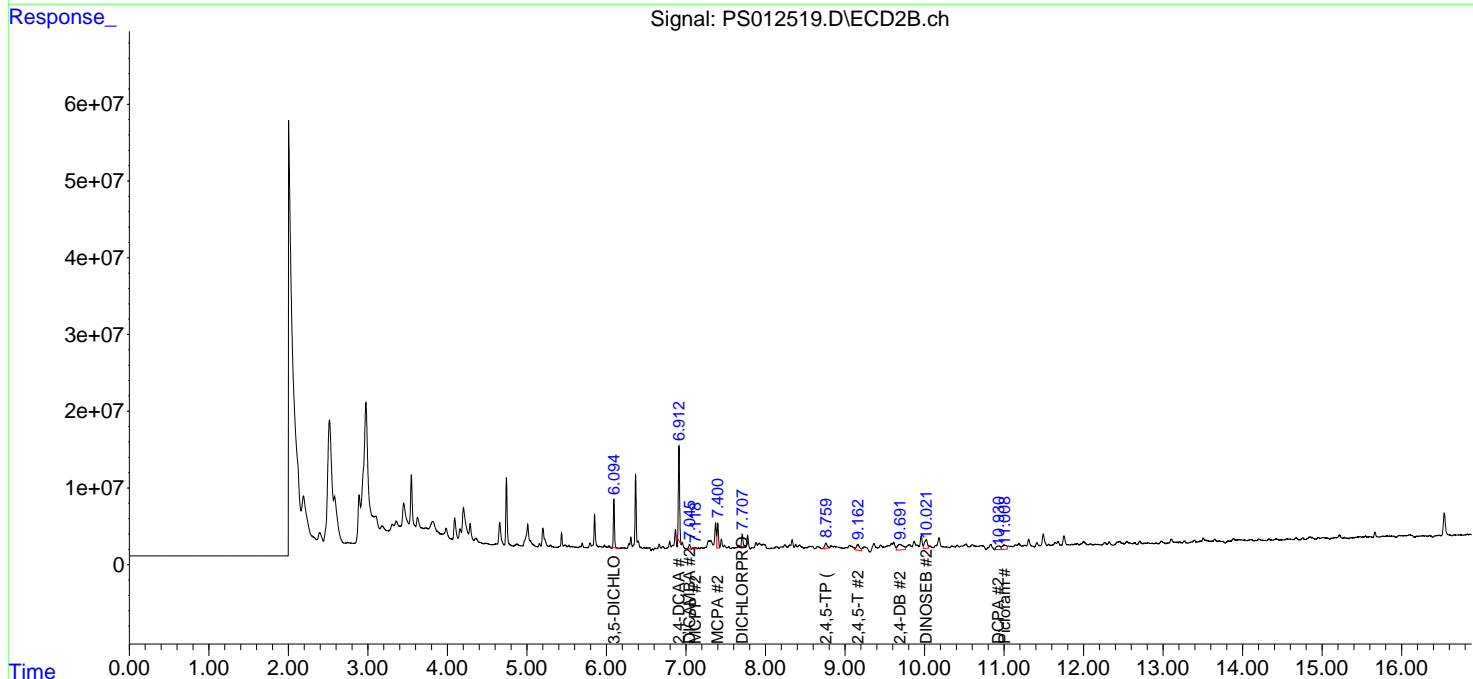
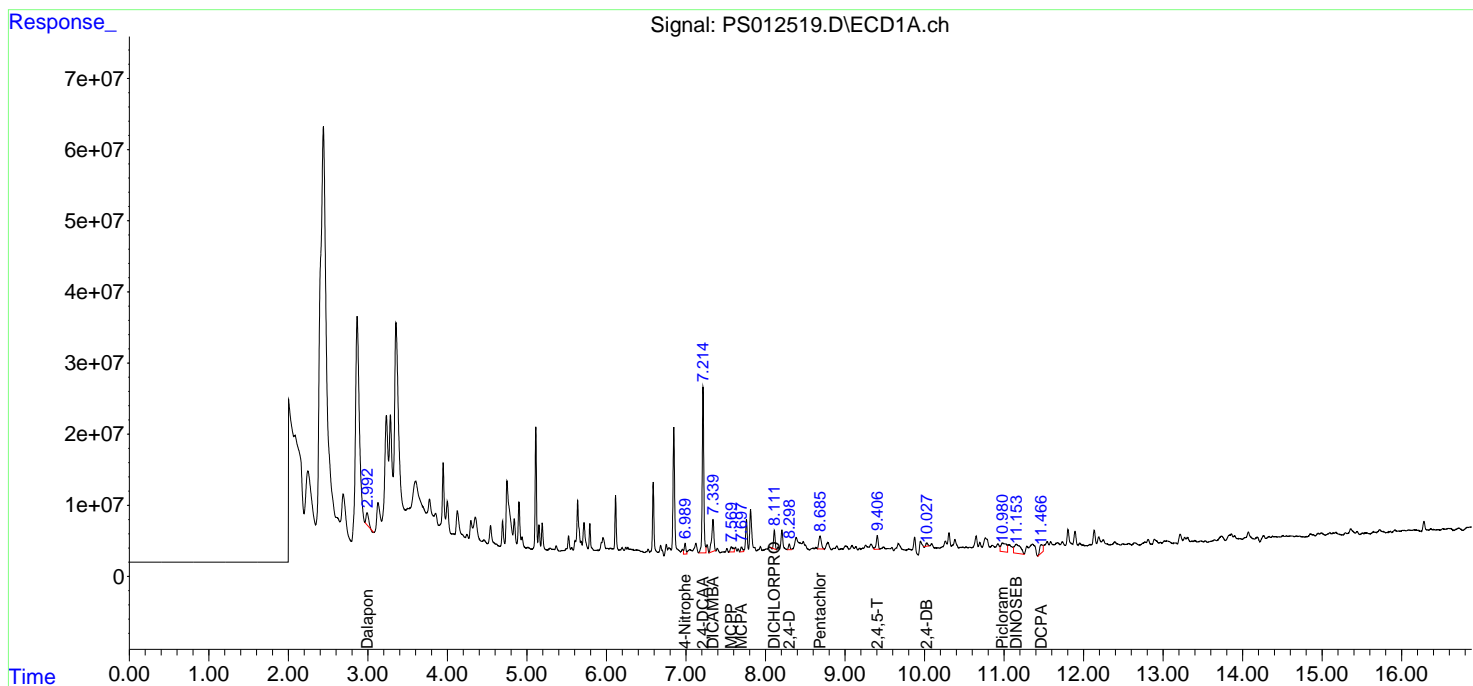
(f)=RT Delta > 1/2 Window (#)=Amounts differ by > 25% (m)=manual int.

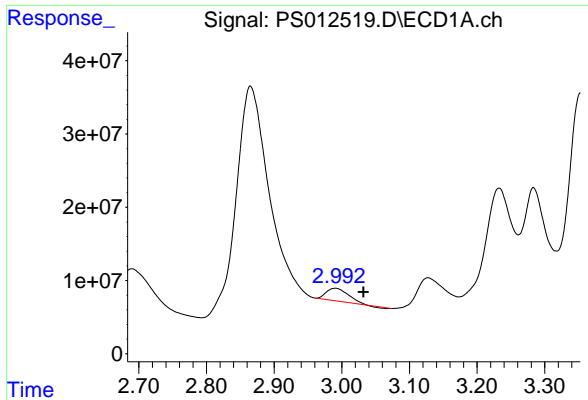
Data Path : Z:\pestpcbsrv\HPCHEM1\ECD_S\Data\PS092520\
 Data File : PS012519.D
 Signal(s) : Signal #1: ECD1A.ch Signal #2: ECD2B.ch
 Acq On : 25 Sep 2020 23:10
 Operator : DD\AJ
 Sample : L3871-25
 Misc :
 ALS Vial : 22 Sample Multiplier: 1

Instrument :
 ECD_S
 ClientSampled :

Integration File signal 1: autoint1.e
 Integration File signal 2: autoint2.e
 Quant Time: Sep 26 02:12:45 2020
 Quant Method : Z:\pestpcbsrv\HPCHEM1\ECD_S\Method\PS092220.M
 Quant Title : 8080.M
 QLast Update : Wed Sep 23 04:57:25 2020
 Response via : Initial Calibration
 Integrator: ChemStation

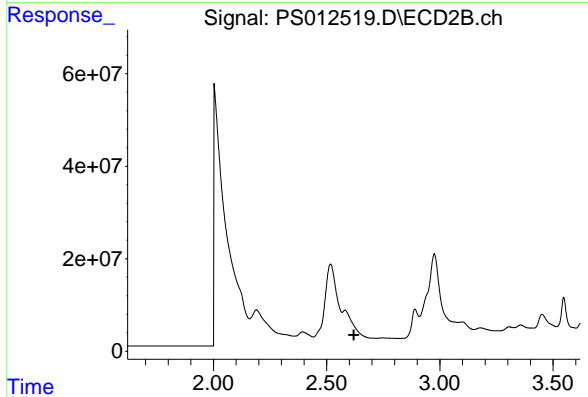
Volume Inj. : 2 µl
 Signal #1 Phase : Rtx-CLPesticides Signal #2 Phase: Rtx-CLPesticides2
 Signal #1 Info : 30M x 0.32mm x0.5 Signal #2 Info : 30M x 0.32mm x 0.25µm



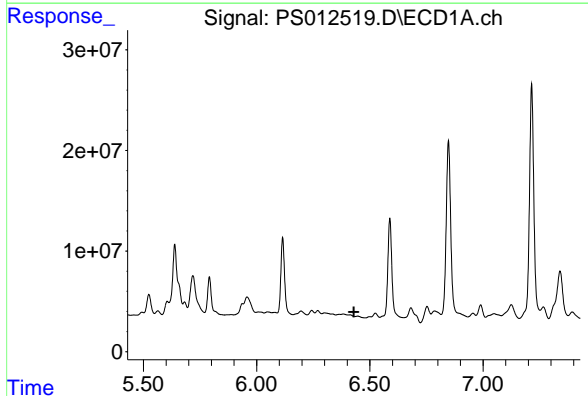


#1 Dalapon
 R.T.: 2.991 min
 Delta R.T.: -0.041 min
 Response: 37822027
 Conc: 33.28 ng/ml

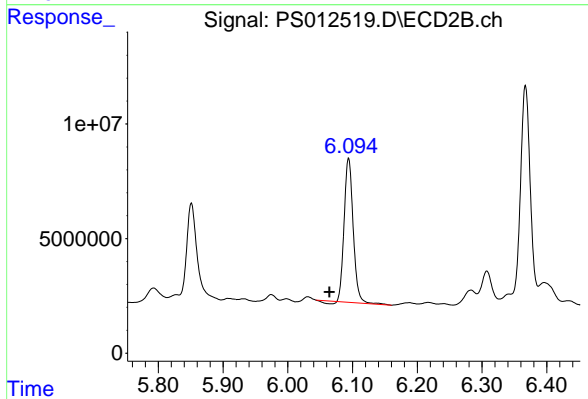
Instrument :
 ECD_S
 ClientSampled :



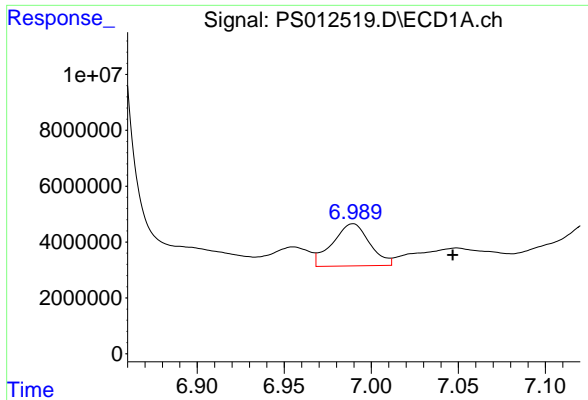
#1 Dalapon
 R.T.: 2.582 min
 Delta R.T.: -0.039 min
 Response: -129846245
 Conc: N.D.



#2 3,5-DICHLOROBENZOIC ACID
 R.T.: 0.000 min
 Exp R.T. : 6.430 min
 Response: 0
 Conc: N.D.

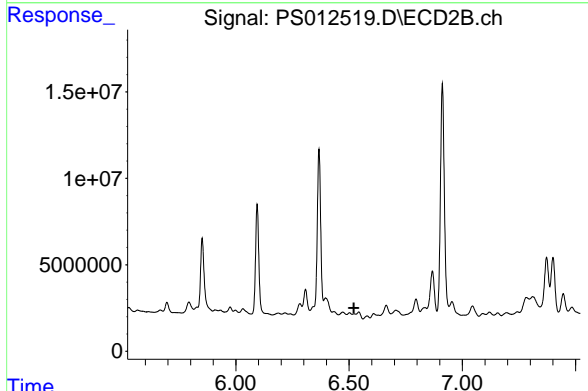


#2 3,5-DICHLOROBENZOIC ACID
 R.T.: 6.094 min
 Delta R.T.: 0.029 min
 Response: 60727582
 Conc: 85.18 ng/ml

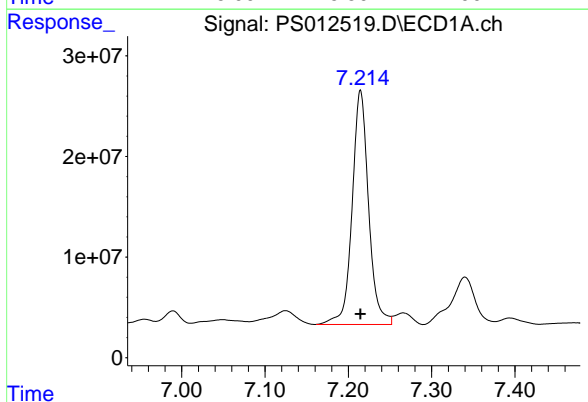


#3 4-Nitrophenol
 R.T.: 6.989 min
 Delta R.T.: -0.058 min
 Response: 22441749
 Conc: 46.15 ng/ml

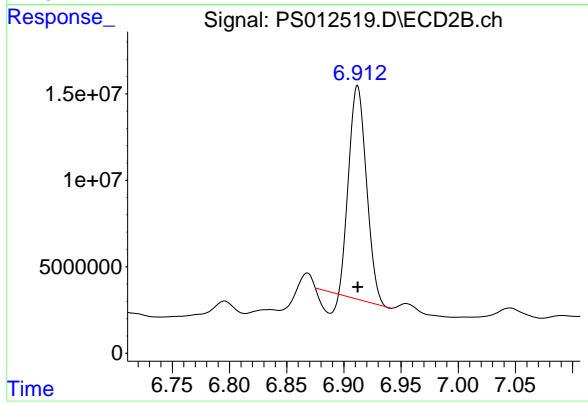
Instrument :
 ECD_S
 ClientSampleId :



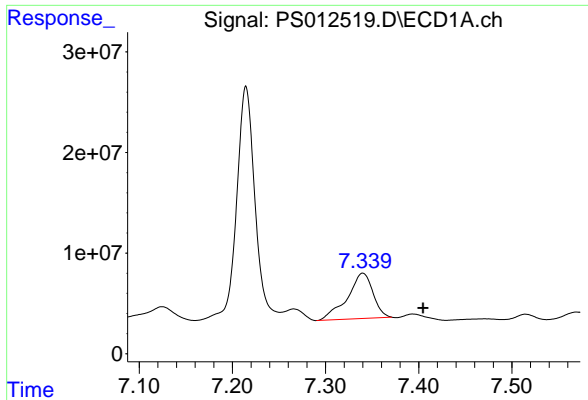
#3 4-Nitrophenol
 R.T.: 0.000 min
 Exp R.T. : 6.522 min
 Response: 0
 Conc: N.D.



#4 2,4-DCAA
 R.T.: 7.215 min
 Delta R.T.: 0.000 min
 Response: 319270792
 Conc: 325.97 ng/ml

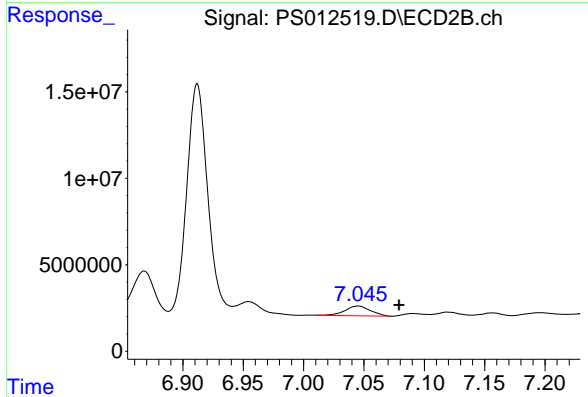


#4 2,4-DCAA
 R.T.: 6.912 min
 Delta R.T.: 0.000 min
 Response: 123950893
 Conc: 269.45 ng/ml

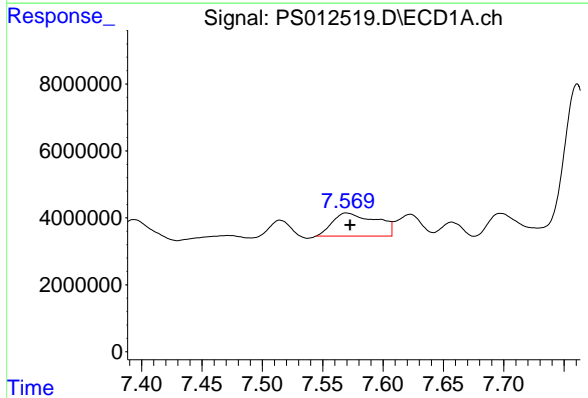


#5 DICAMBA
 R.T.: 7.340 min
 Delta R.T.: -0.065 min
 Response: 86321134
 Conc: 22.38 ng/ml

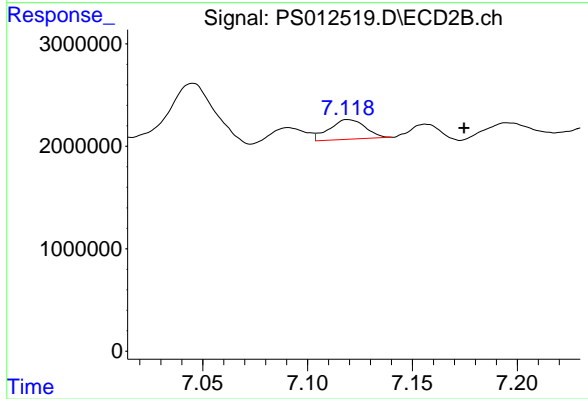
Instrument :
 ECD_S
 ClientSampleId :



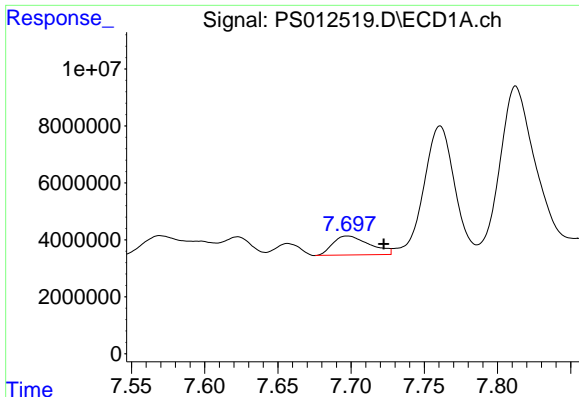
#5 DICAMBA
 R.T.: 7.045 min
 Delta R.T.: -0.034 min
 Response: 8425292
 Conc: 4.42 ng/ml



#6 MCPP
 R.T.: 7.570 min
 Delta R.T.: -0.002 min
 Response: 17616498
 Conc: 6.04 ug/ml



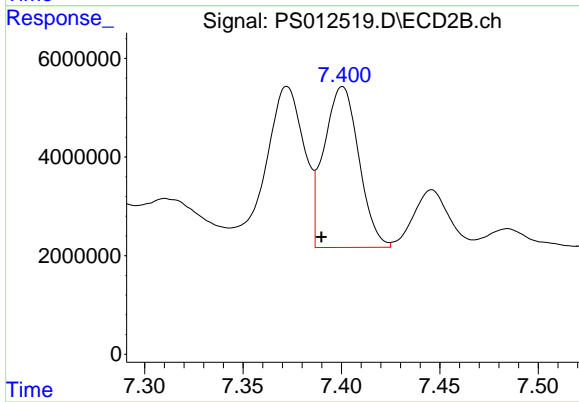
#6 MCPP
 R.T.: 7.119 min
 Delta R.T.: -0.055 min
 Response: 2289732
 Conc: 1.51 ug/ml



#7 MCPA

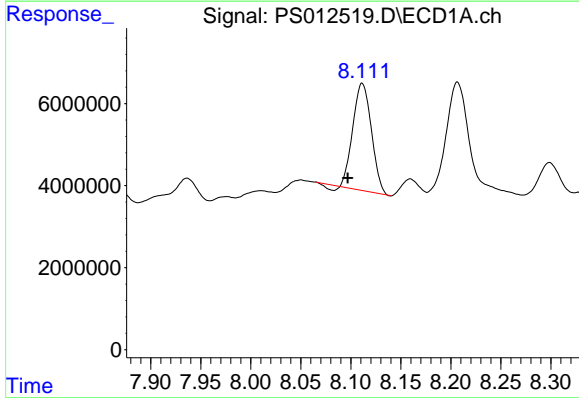
R.T.: 7.698 min
 Delta R.T.: -0.024 min
 Response: 11671963
 Conc: 2.80 ug/ml

Instrument :
 ECD_S
 ClientSampleId :



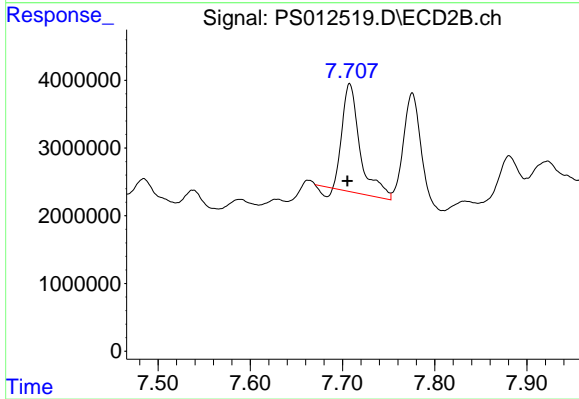
#7 MCPA

R.T.: 7.401 min
 Delta R.T.: 0.011 min
 Response: 40263936
 Conc: 16.80 ug/ml



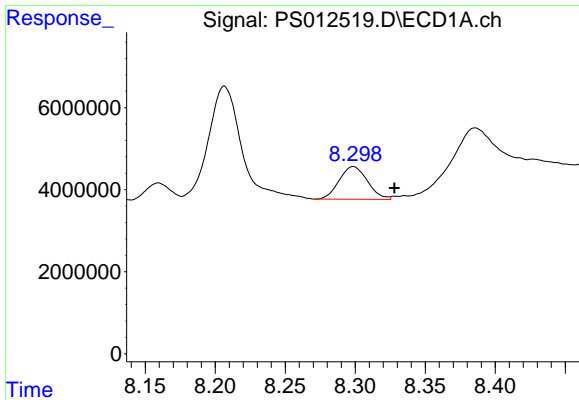
#8 DICHLORPROP

R.T.: 8.111 min
 Delta R.T.: 0.015 min
 Response: 33026696
 Conc: 34.13 ng/ml



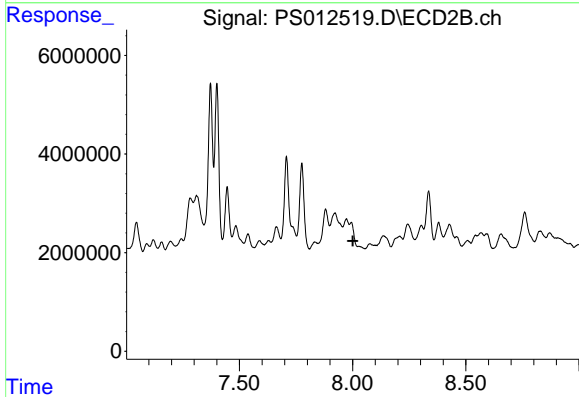
#8 DICHLORPROP

R.T.: 7.708 min
 Delta R.T.: 0.003 min
 Response: 20787453
 Conc: 40.26 ng/ml

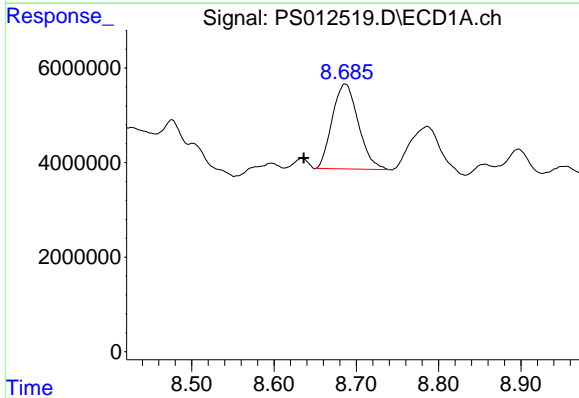


#9 2,4-D
 R.T.: 8.299 min
 Delta R.T.: -0.029 min
 Response: 11200448
 Conc: 9.86 ng/ml

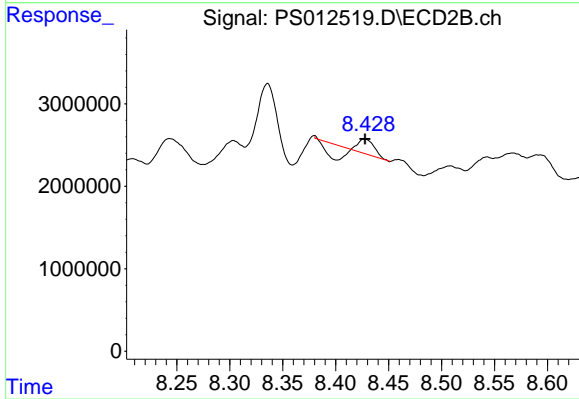
Instrument :
 ECD_S
 ClientSampled :



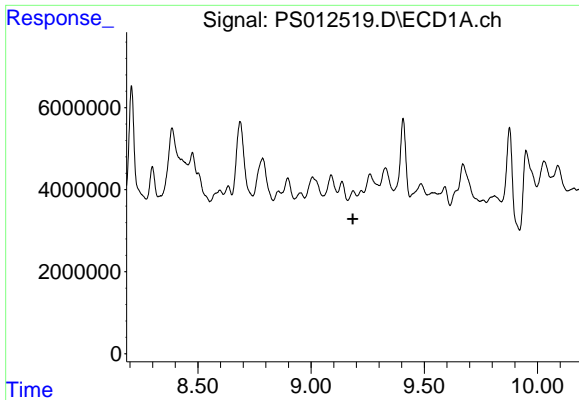
#9 2,4-D
 R.T.: 0.000 min
 Exp R.T. : 8.001 min
 Response: 0
 Conc: N.D.



#10 Pentachlorophenol
 R.T.: 8.686 min
 Delta R.T.: 0.050 min
 Response: 39524594
 Conc: 2.86 ng/ml

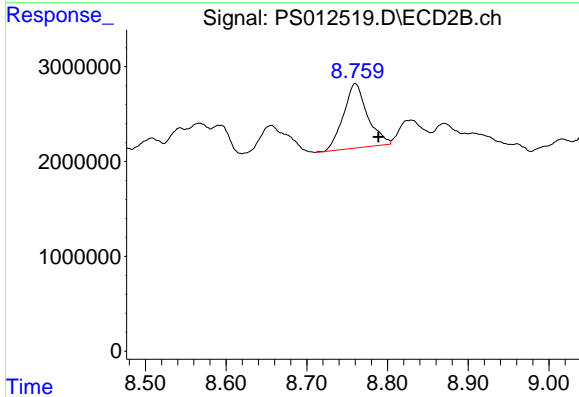


#10 Pentachlorophenol
 R.T.: 8.427 min
 Delta R.T.: 0.000 min
 Response: 55600
 Conc: N.D.

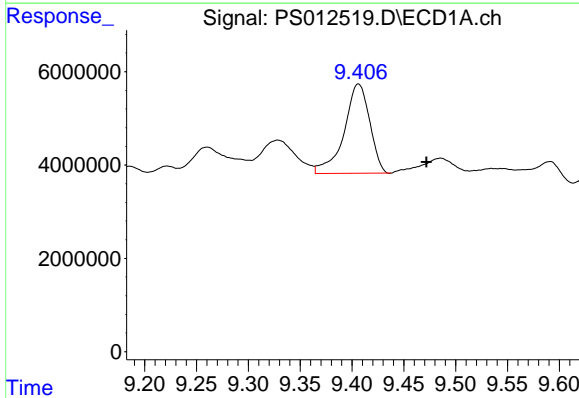


#11 2,4,5-TP (SILVEX)
 R.T.: 0.000 min
 Exp R.T.: 9.185 min
 Response: 0
 Conc: N.D.

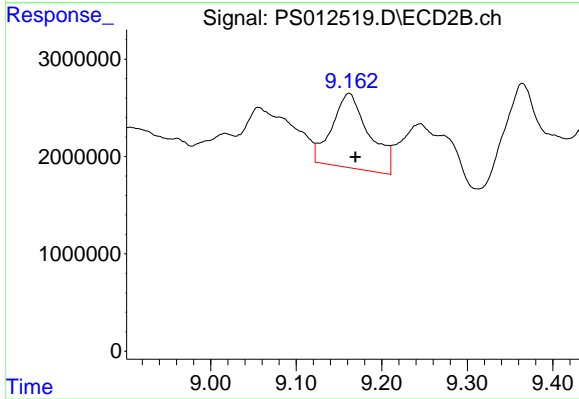
Instrument :
 ECD_S
 ClientSampled :



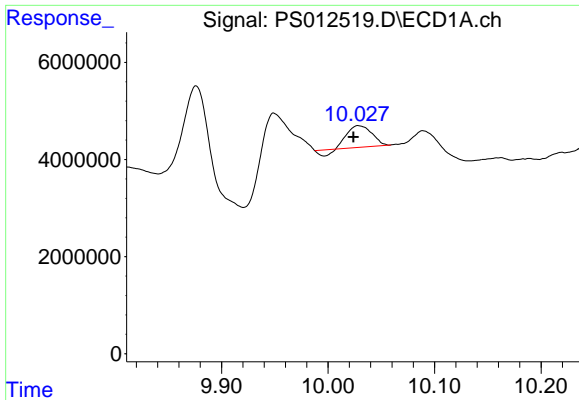
#11 2,4,5-TP (SILVEX)
 R.T.: 8.760 min
 Delta R.T.: -0.029 min
 Response: 14103968
 Conc: 5.35 ng/ml



#12 2,4,5-T
 R.T.: 9.406 min
 Delta R.T.: -0.066 min
 Response: 32868301
 Conc: 5.85 ng/ml



#12 2,4,5-T
 R.T.: 9.162 min
 Delta R.T.: -0.007 min
 Response: 23052905
 Conc: 8.97 ng/ml



#13 2,4-DB

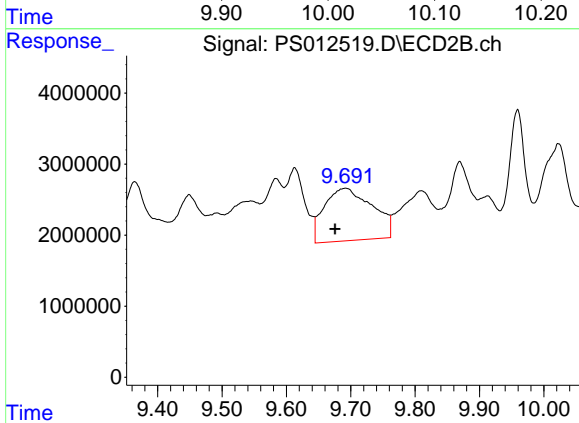
R.T.: 10.029 min

Delta R.T.: 0.005 min

Response: 6490160

Conc: 6.86 ng/ml

Instrument :
ECD_S
ClientSampleId :



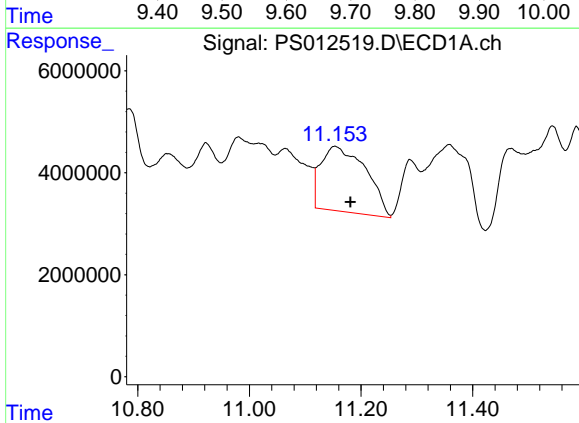
#13 2,4-DB

R.T.: 9.692 min

Delta R.T.: 0.017 min

Response: 38248637

Conc: 102.17 ng/ml



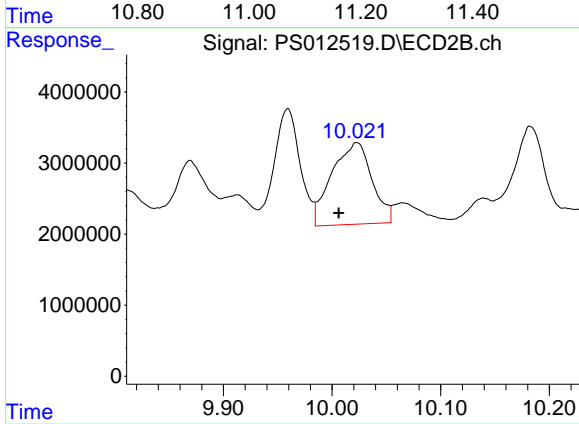
#14 DINOSEB

R.T.: 11.153 min

Delta R.T.: -0.028 min

Response: 71424129

Conc: 15.73 ng/ml



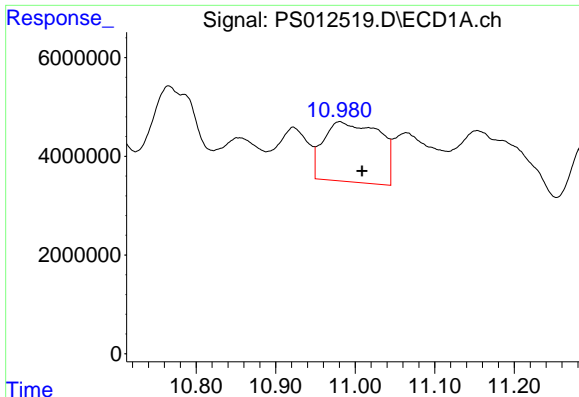
#14 DINOSEB

R.T.: 10.023 min

Delta R.T.: 0.017 min

Response: 29512517

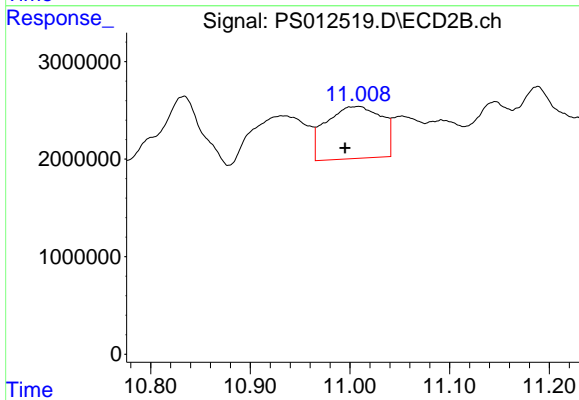
Conc: 15.41 ng/ml



#15 Picloram

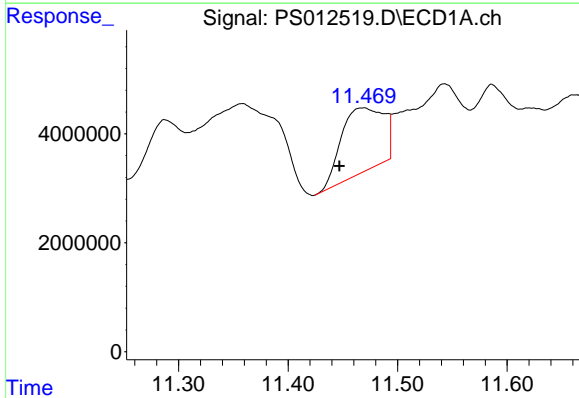
R.T.: 10.980 min
 Delta R.T.: -0.028 min
 Response: 59397877
 Conc: 8.25 ng/ml

Instrument :
 ECD_S
 ClientSampled :



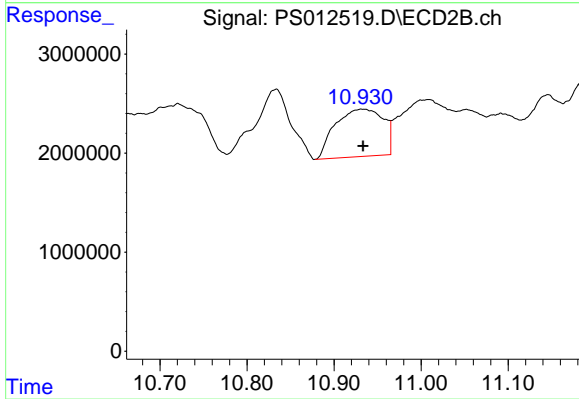
#15 Picloram

R.T.: 11.009 min
 Delta R.T.: 0.014 min
 Response: 20694809
 Conc: 5.25 ng/ml



#16 DCPA

R.T.: 11.468 min
 Delta R.T.: 0.021 min
 Response: 31703979
 Conc: 4.49 ng/ml



#16 DCPA

R.T.: 10.932 min
 Delta R.T.: -0.002 min
 Response: 18347638
 Conc: 5.52 ng/ml