

Data Path : Z:\pestpcbsrv\HPCHEM1\ECD_S\Data\PS092520\
 Data File : PS012526.D
 Signal(s) : Signal #1: ECD1A.ch Signal #2: ECD2B.ch
 Acq On : 26 Sep 2020 01:51
 Operator : DD\AJ
 Sample : HSTDCCC750
 Misc :
 ALS Vial : 3 Sample Multiplier: 1

Instrument :
 ECD_S
 ClientSampleId :

Integration File signal 1: autoint1.e
 Integration File signal 2: autoint2.e
 Quant Time: Sep 26 02:26:43 2020
 Quant Method : Z:\pestpcbsrv\HPCHEM1\ECD_S\Method\PS092220.M
 Quant Title : 8080.M
 QLast Update : Wed Sep 23 04:57:25 2020
 Response via : Initial Calibration
 Integrator: ChemStation

Volume Inj. : 2 µl
 Signal #1 Phase : Rtx-CLPesticides Signal #2 Phase: Rtx-CLPesticides2
 Signal #1 Info : 30M x 0.32mm x0.5 Signal #2 Info : 30M x 0.32mm x 0.25µm

	Compound	RT#1	RT#2	Resp#1	Resp#2	ng/ml	ng/ml

System Monitoring Compounds							
4) S	2,4-DCAA	7.214	6.911	784.1E6	365.2E6	800.571	793.918
Target Compounds							
1) T	Dalapon	3.033	2.623	765.6E6	393.9E6	673.741	658.522
2) T	3,5-DICHL...	6.429	6.064	988.7E6	517.8E6	733.238	726.317
3) T	4-Nitroph...	7.046	6.521	355.5E6	201.9E6	731.186	722.440
5) T	DICAMBA	7.404	7.078	2909.6E6	1432.7E6	754.229	751.312
6) T	MCPD	7.573	7.175	225.5E6	114.3E6	77.304	75.548
7) T	MCPA	7.722	7.390	312.7E6	176.2E6	74.974	73.515
8) T	DICHLORPROP	8.096	7.704	724.1E6	384.1E6	748.321	743.914
9) T	2,4-D	8.326	7.999	847.4E6	469.0E6	746.313	748.990
10) T	Pentachlo...	8.635	8.427	10425.4E6	4636.5E6	754.384	760.150
11) T	2,4,5-TP ...	9.184	8.787	4227.5E6	2025.1E6	762.428	767.567
12) T	2,4,5-T	9.469	9.167	4253.3E6	1988.9E6	756.643	773.520
13) T	2,4-DB	10.021	9.674	783.1E6	275.3E6	827.569	735.409
14) T	DINOSEB	11.179	10.005	3322.1E6	1450.3E6	731.698	757.186
15) T	Picloram	11.005	10.992	5206.0E6	2826.9E6	723.044	717.222
16) T	DCPA	11.445	10.932	5406.5E6	2607.5E6	765.449	784.109

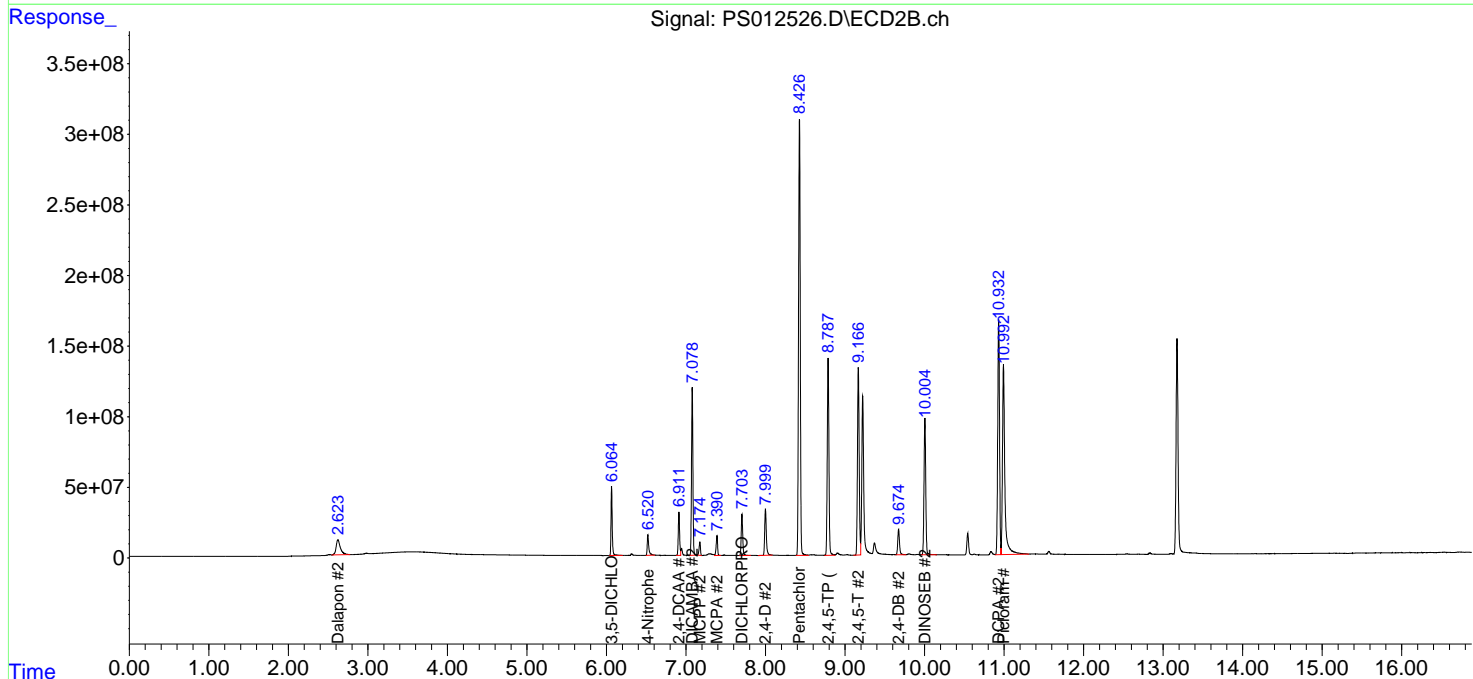
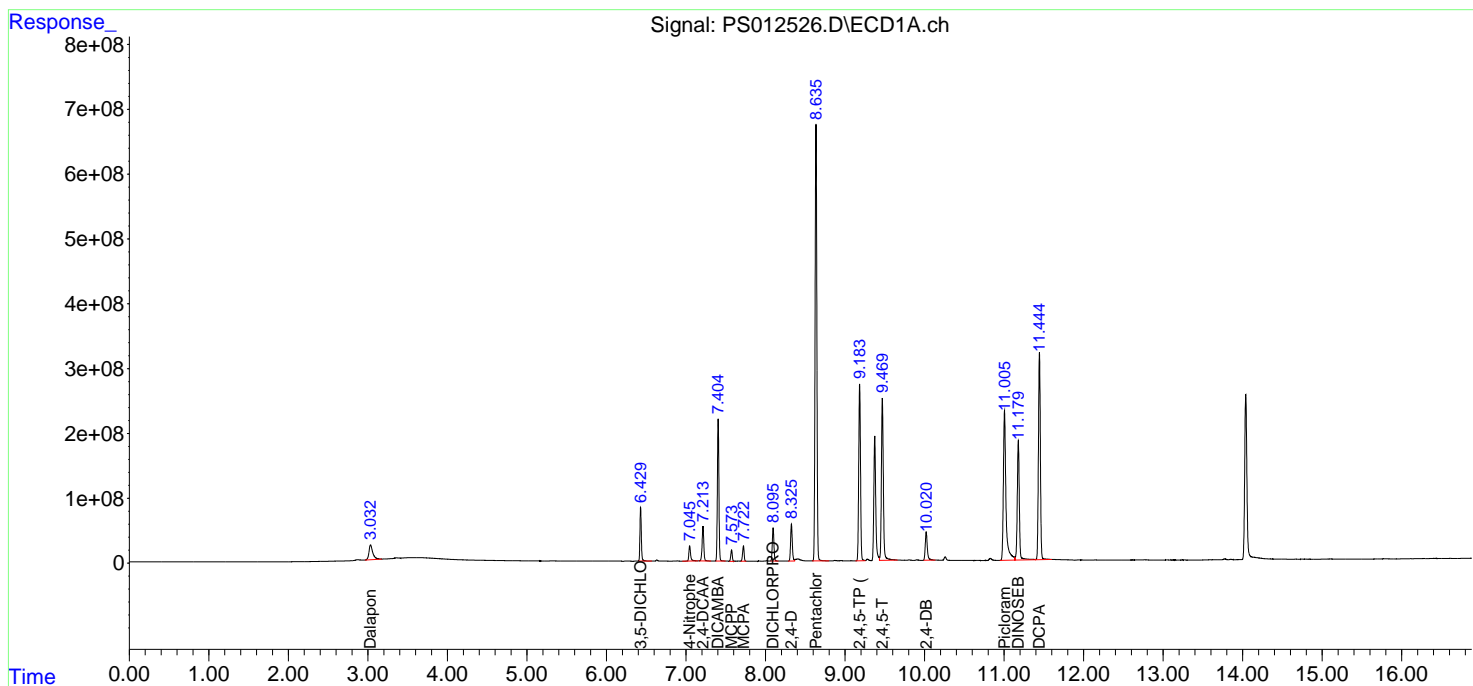
(f)=RT Delta > 1/2 Window (#)=Amounts differ by > 25% (m)=manual int.

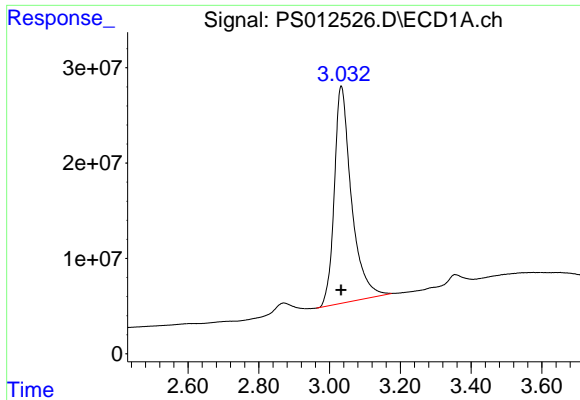
Data Path : Z:\pestpcbsrv\HPCHEM1\ECD_S\Data\PS092520\
 Data File : PS012526.D
 Signal(s) : Signal #1: ECD1A.ch Signal #2: ECD2B.ch
 Acq On : 26 Sep 2020 01:51
 Operator : DD\AJ
 Sample : HSTDCCC750
 Misc :
 ALS Vial : 3 Sample Multiplier: 1

Instrument :
 ECD_S
 ClientSampled :

Integration File signal 1: autoint1.e
 Integration File signal 2: autoint2.e
 Quant Time: Sep 26 02:26:43 2020
 Quant Method : Z:\pestpcbsrv\HPCHEM1\ECD_S\Method\PS092220.M
 Quant Title : 8080.M
 QLast Update : Wed Sep 23 04:57:25 2020
 Response via : Initial Calibration
 Integrator: ChemStation

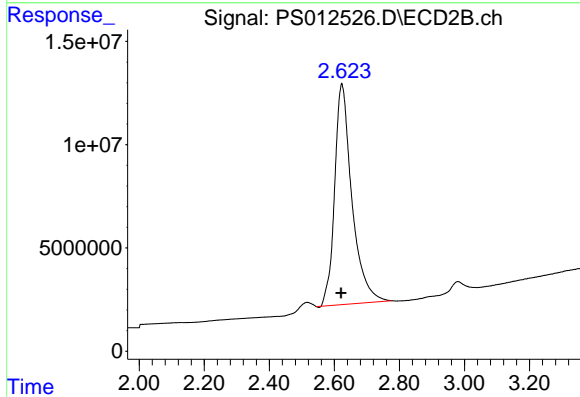
Volume Inj. : 2 µl
 Signal #1 Phase : Rtx-CLPesticides Signal #2 Phase: Rtx-CLPesticides2
 Signal #1 Info : 30M x 0.32mm x0.5 Signal #2 Info : 30M x 0.32mm x 0.25µm



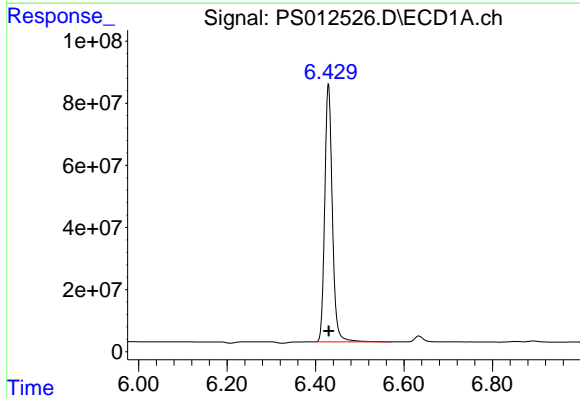


#1 Dalapon
 R.T.: 3.033 min
 Delta R.T.: 0.000 min
 Response: 765617135
 Conc: 673.74 ng/ml

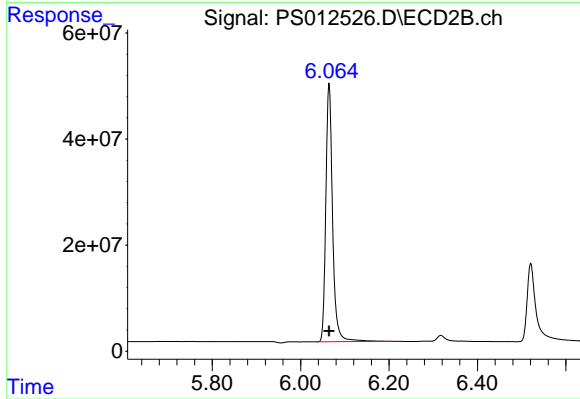
Instrument :
 ECD_S
 ClientSampled :



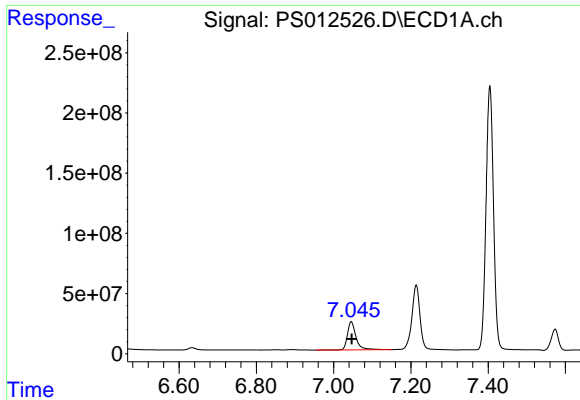
#1 Dalapon
 R.T.: 2.623 min
 Delta R.T.: 0.002 min
 Response: 393921168
 Conc: 658.52 ng/ml



#2 3,5-DICHLOROBENZOIC ACID
 R.T.: 6.429 min
 Delta R.T.: 0.000 min
 Response: 988730995
 Conc: 733.24 ng/ml

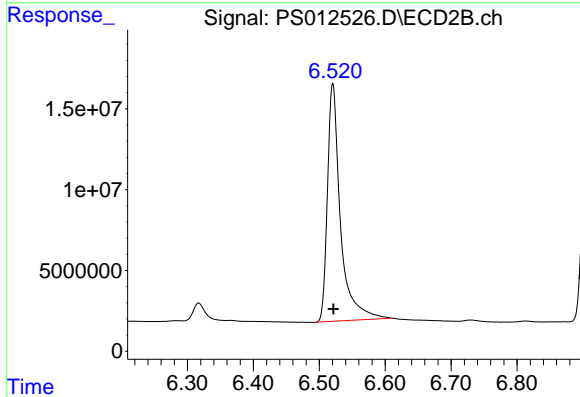


#2 3,5-DICHLOROBENZOIC ACID
 R.T.: 6.064 min
 Delta R.T.: 0.000 min
 Response: 517835369
 Conc: 726.32 ng/ml

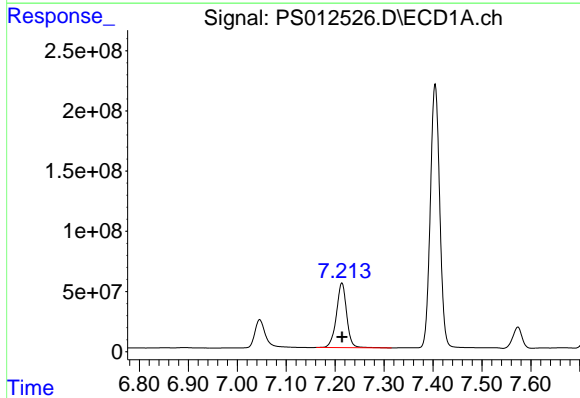


#3 4-Nitrophenol
 R.T.: 7.046 min
 Delta R.T.: -0.001 min
 Response: 355549354
 Conc: 731.19 ng/ml

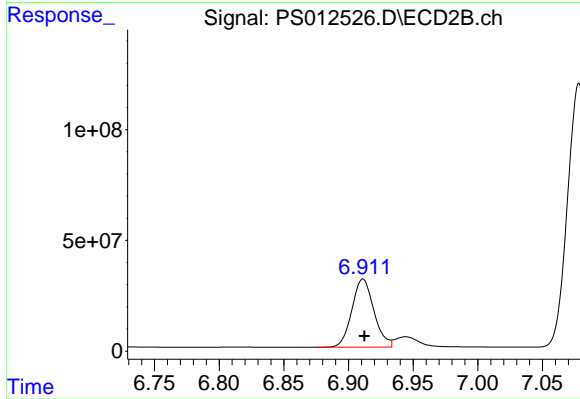
Instrument :
 ECD_S
 ClientSampleId :



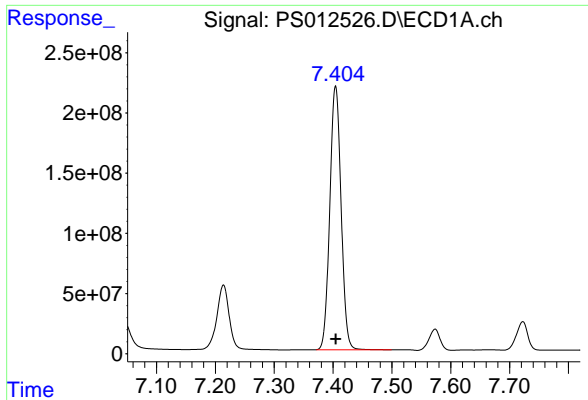
#3 4-Nitrophenol
 R.T.: 6.521 min
 Delta R.T.: -0.001 min
 Response: 201856126
 Conc: 722.44 ng/ml



#4 2,4-DCAA
 R.T.: 7.214 min
 Delta R.T.: 0.000 min
 Response: 784118468
 Conc: 800.57 ng/ml

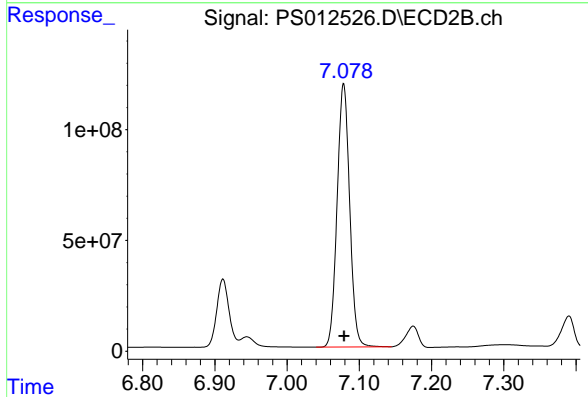


#4 2,4-DCAA
 R.T.: 6.911 min
 Delta R.T.: 0.000 min
 Response: 365215549
 Conc: 793.92 ng/ml

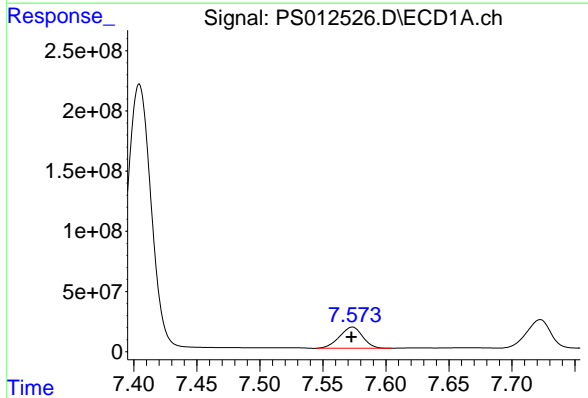


#5 DICAMBA
 R.T.: 7.404 min
 Delta R.T.: 0.000 min
 Response: 2909571247
 Conc: 754.23 ng/ml

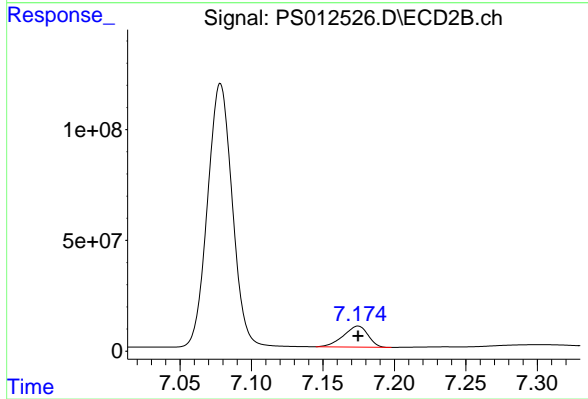
Instrument :
 ECD_S
 ClientSampled :



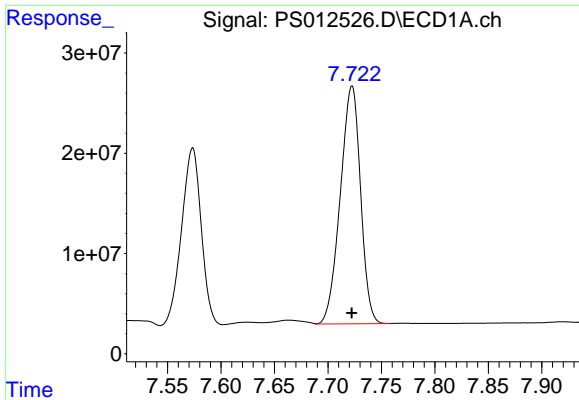
#5 DICAMBA
 R.T.: 7.078 min
 Delta R.T.: 0.000 min
 Response: 1432688004
 Conc: 751.31 ng/ml



#6 MCP
 R.T.: 7.573 min
 Delta R.T.: 0.000 min
 Response: 225541540
 Conc: 77.30 ug/ml



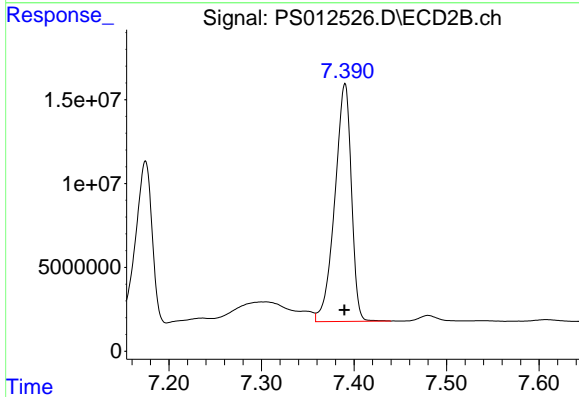
#6 MCP
 R.T.: 7.175 min
 Delta R.T.: 0.000 min
 Response: 114278144
 Conc: 75.55 ug/ml



#7 MCPA

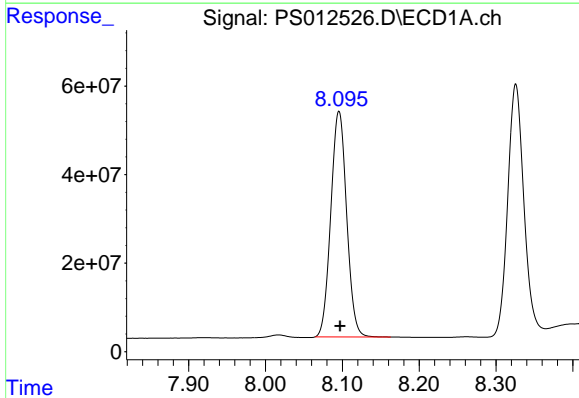
R.T.: 7.722 min
 Delta R.T.: 0.000 min
 Response: 312691607
 Conc: 74.97 ug/ml

Instrument :
 ECD_S
 ClientSampled :



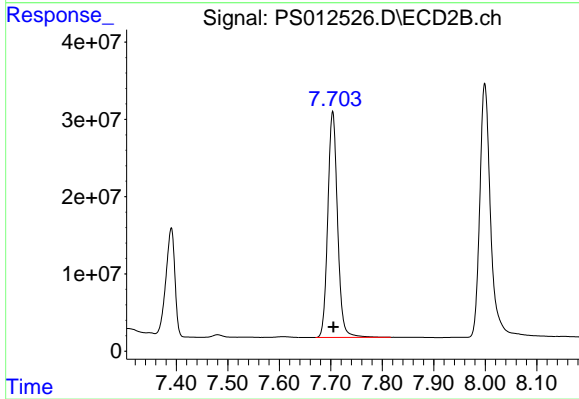
#7 MCPA

R.T.: 7.390 min
 Delta R.T.: 0.000 min
 Response: 176236763
 Conc: 73.51 ug/ml



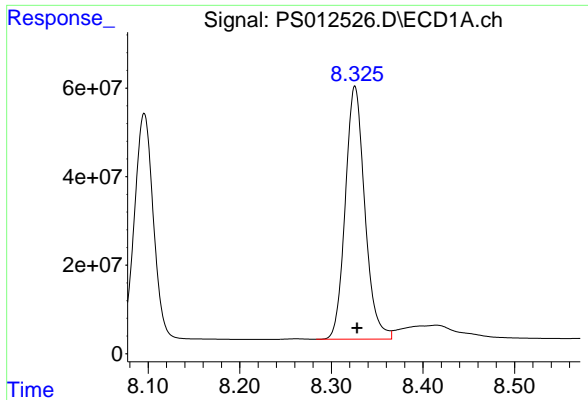
#8 DICHLORPROP

R.T.: 8.096 min
 Delta R.T.: -0.001 min
 Response: 724144178
 Conc: 748.32 ng/ml



#8 DICHLORPROP

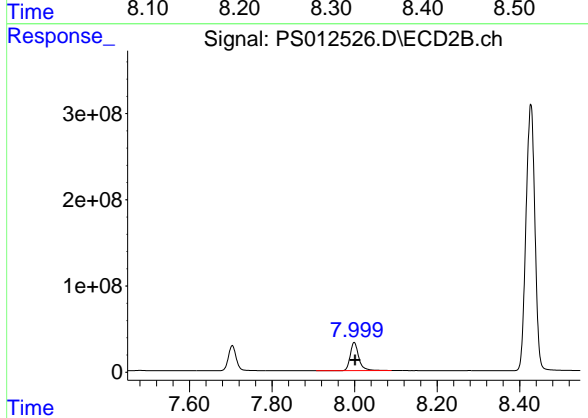
R.T.: 7.704 min
 Delta R.T.: -0.001 min
 Response: 384102833
 Conc: 743.91 ng/ml



#9 2,4-D

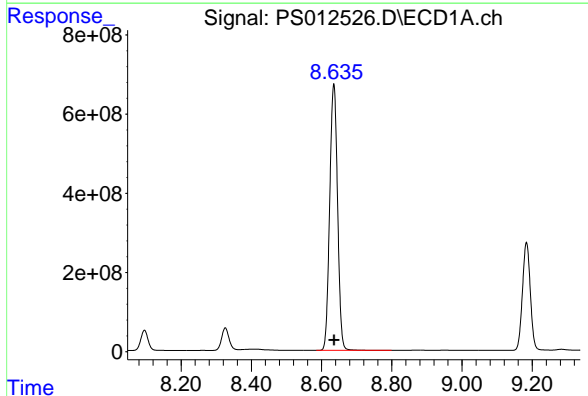
R.T.: 8.326 min
 Delta R.T.: -0.002 min
 Response: 847378992
 Conc: 746.31 ng/ml

Instrument :
 ECD_S
 ClientSampled :



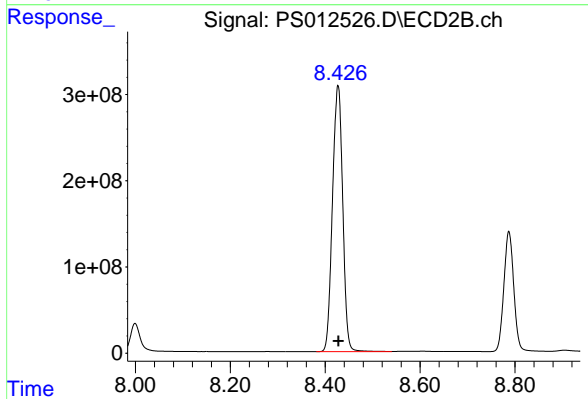
#9 2,4-D

R.T.: 7.999 min
 Delta R.T.: -0.002 min
 Response: 469048552
 Conc: 748.99 ng/ml



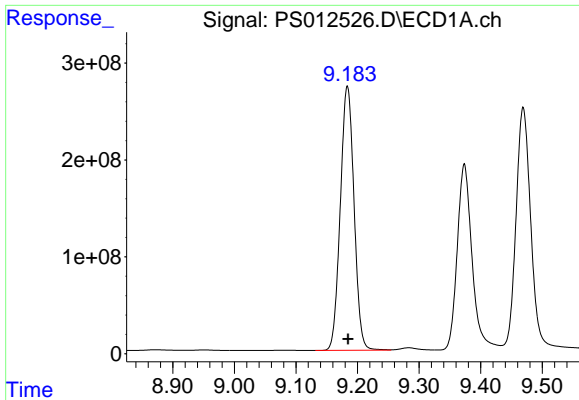
#10 Pentachlorophenol

R.T.: 8.635 min
 Delta R.T.: -0.001 min
 Response: 10425432748
 Conc: 754.38 ng/ml



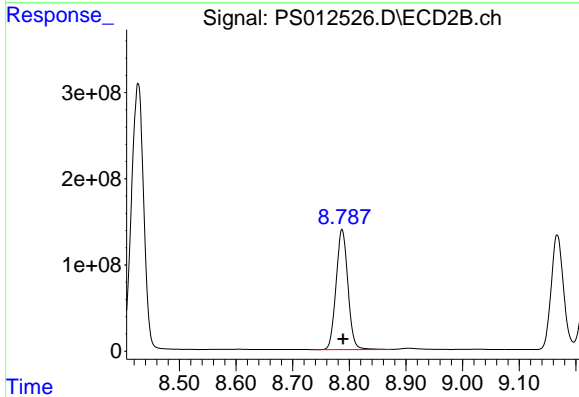
#10 Pentachlorophenol

R.T.: 8.427 min
 Delta R.T.: 0.000 min
 Response: 4636457379
 Conc: 760.15 ng/ml

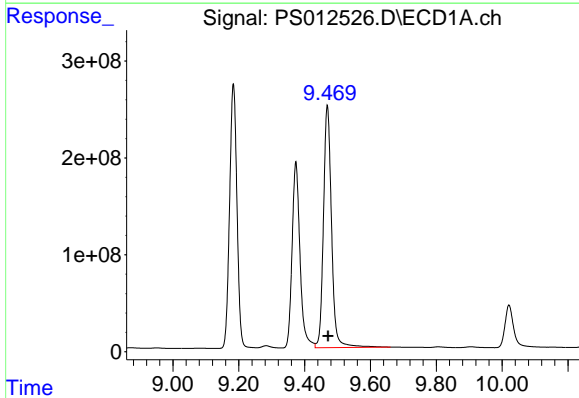


#11 2,4,5-TP (SILVEX)
 R.T.: 9.184 min
 Delta R.T.: -0.001 min
 Response: 4227542183
 Conc: 762.43 ng/ml

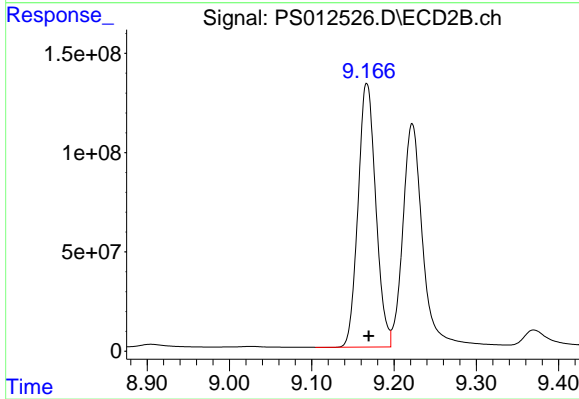
Instrument :
 ECD_S
 ClientSampleId :



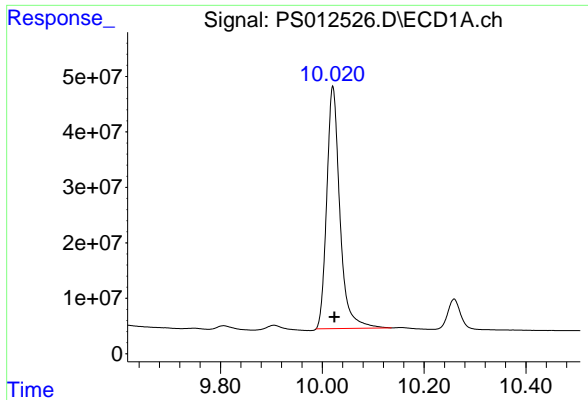
#11 2,4,5-TP (SILVEX)
 R.T.: 8.787 min
 Delta R.T.: -0.002 min
 Response: 2025141453
 Conc: 767.57 ng/ml



#12 2,4,5-T
 R.T.: 9.469 min
 Delta R.T.: -0.003 min
 Response: 4253251982
 Conc: 756.64 ng/ml

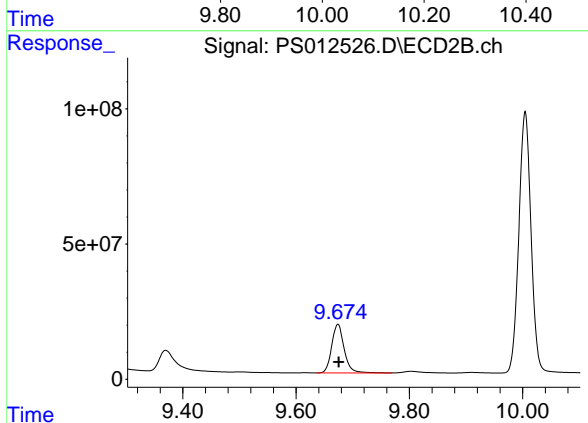


#12 2,4,5-T
 R.T.: 9.167 min
 Delta R.T.: -0.002 min
 Response: 1988943546
 Conc: 773.52 ng/ml

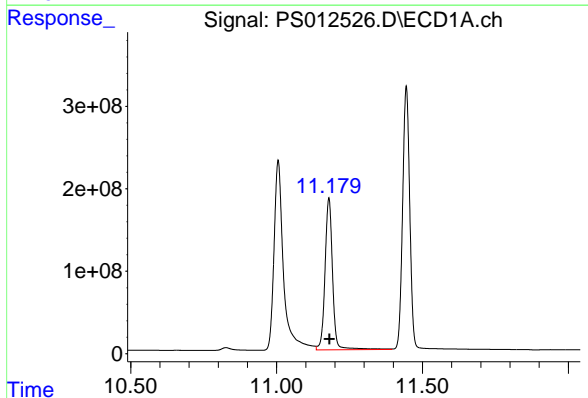


#13 2,4-DB
 R.T.: 10.021 min
 Delta R.T.: -0.003 min
 Response: 783128956
 Conc: 827.57 ng/ml

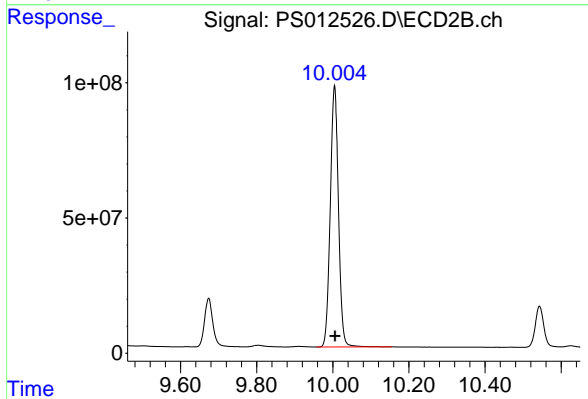
Instrument :
 ECD_S
 ClientSampled :



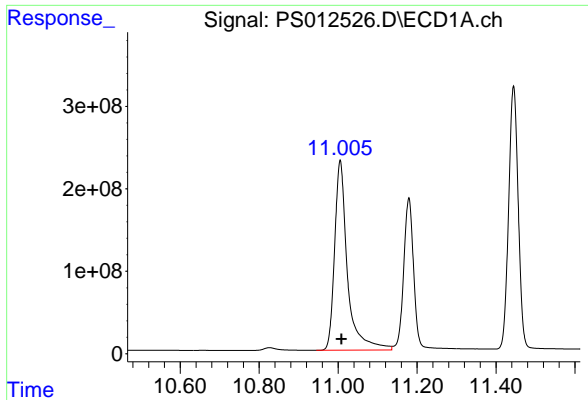
#13 2,4-DB
 R.T.: 9.674 min
 Delta R.T.: -0.001 min
 Response: 275314208
 Conc: 735.41 ng/ml



#14 DINOSEB
 R.T.: 11.179 min
 Delta R.T.: -0.002 min
 Response: 3322076718
 Conc: 731.70 ng/ml

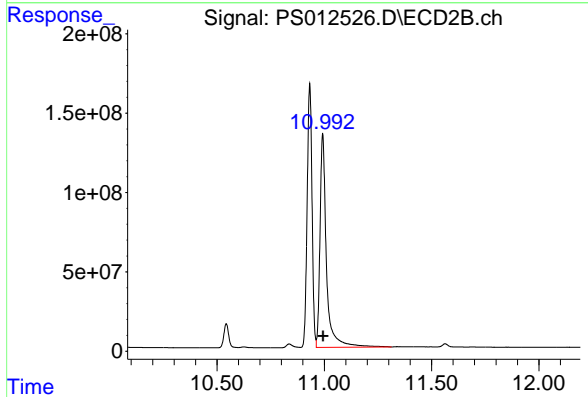


#14 DINOSEB
 R.T.: 10.005 min
 Delta R.T.: -0.002 min
 Response: 1450338451
 Conc: 757.19 ng/ml

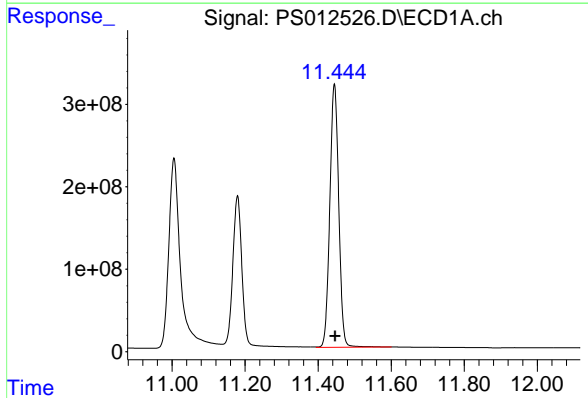


#15 Picloram
 R.T.: 11.005 min
 Delta R.T.: -0.003 min
 Response: 5206024797
 Conc: 723.04 ng/ml

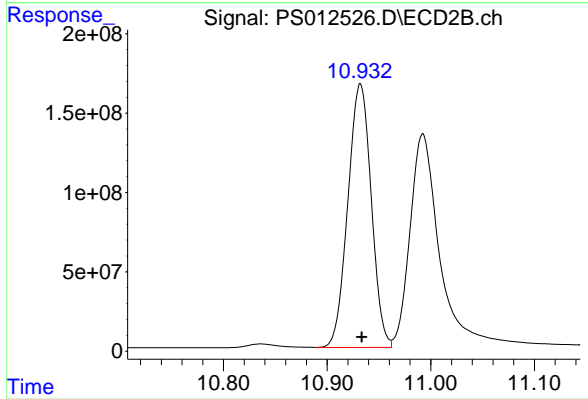
Instrument :
 ECD_S
 ClientSampled :



#15 Picloram
 R.T.: 10.992 min
 Delta R.T.: -0.003 min
 Response: 2826880443
 Conc: 717.22 ng/ml



#16 DCPA
 R.T.: 11.445 min
 Delta R.T.: -0.002 min
 Response: 5406547950
 Conc: 765.45 ng/ml



#16 DCPA
 R.T.: 10.932 min
 Delta R.T.: -0.001 min
 Response: 2607495844
 Conc: 784.11 ng/ml