

Data Path : Z:\pestpcbsrv\HPCHEM1\ECD\_S\Data\PS092622\  
 Data File : PS020645.D  
 Signal(s) : Signal #1: ECD1A.ch Signal #2: ECD2B.ch  
 Acq On : 26 Sep 2022 10:02  
 Operator : AJ\MA  
 Sample : HEXANE  
 Misc :  
 ALS Vial : 1 Sample Multiplier: 1

Instrument :  
 ECD\_S  
 ClientSampleId :  
 HEXANE

Integration File signal 1: autoint1.e  
 Integration File signal 2: autoint2.e  
 Quant Time: Sep 27 00:09:26 2022  
 Quant Method : Z:\pestpcbsrv\HPCHEM1\ECD\_S\Method\PS091322.M  
 Quant Title : 8080.M  
 QLast Update : Wed Sep 14 02:51:16 2022  
 Response via : Initial Calibration  
 Integrator: ChemStation

Volume Inj. : 2 µl  
 Signal #1 Phase : Rtx-CLPesticides Signal #2 Phase: Rtx-CLPesticides2  
 Signal #1 Info : 30M x 0.32mm x0.5 Signal #2 Info : 30M x 0.32mm x 0.25µm

	Compound	RT#1	RT#2	Resp#1	Resp#2	ng/ml	ng/ml
-----							
System Monitoring Compounds							
4) S	2,4-DCAA	7.187	6.731	1793035	984533	<MDL	1.156 #
Target Compounds							
3) T	4-Nitroph...	7.039	0.000	1619310	0	127.945	N.D. #
5) T	DICAMBA	7.376	6.965f	3814672	-15721	<MDL	N.D. #
6) T	MCP	7.466f	7.003	2318005	129673	<MDL	<MDL #
7) T	MCPA	7.684	0.000	488293	0	<MDL	N.D. #
8) T	DICHLORPROP	8.067	0.000	9591851	0	2.660	N.D. #
9) T	2,4-D	8.335	0.000	85913159	0	18.484	N.D. #
10) T	Pentachlo...	8.595	0.000	3708866	0	<MDL	N.D. #
11) T	2,4,5-TP ...	9.152	0.000	1236726	0	<MDL	N.D. #
12) T	2,4,5-T	9.448	0.000	3837503	0	<MDL	N.D. #
13) T	2,4-DB	9.994	0.000	746348	0	<MDL	N.D. #
14) T	DINOSEB	11.164	0.000	1527384	0	<MDL	N.D. #
15) T	Picloram	10.995	10.825	80850249	13735253	2.687	1.706 #
16) T	DCPA	11.395	0.000	2685718	0	<MDL	N.D. #

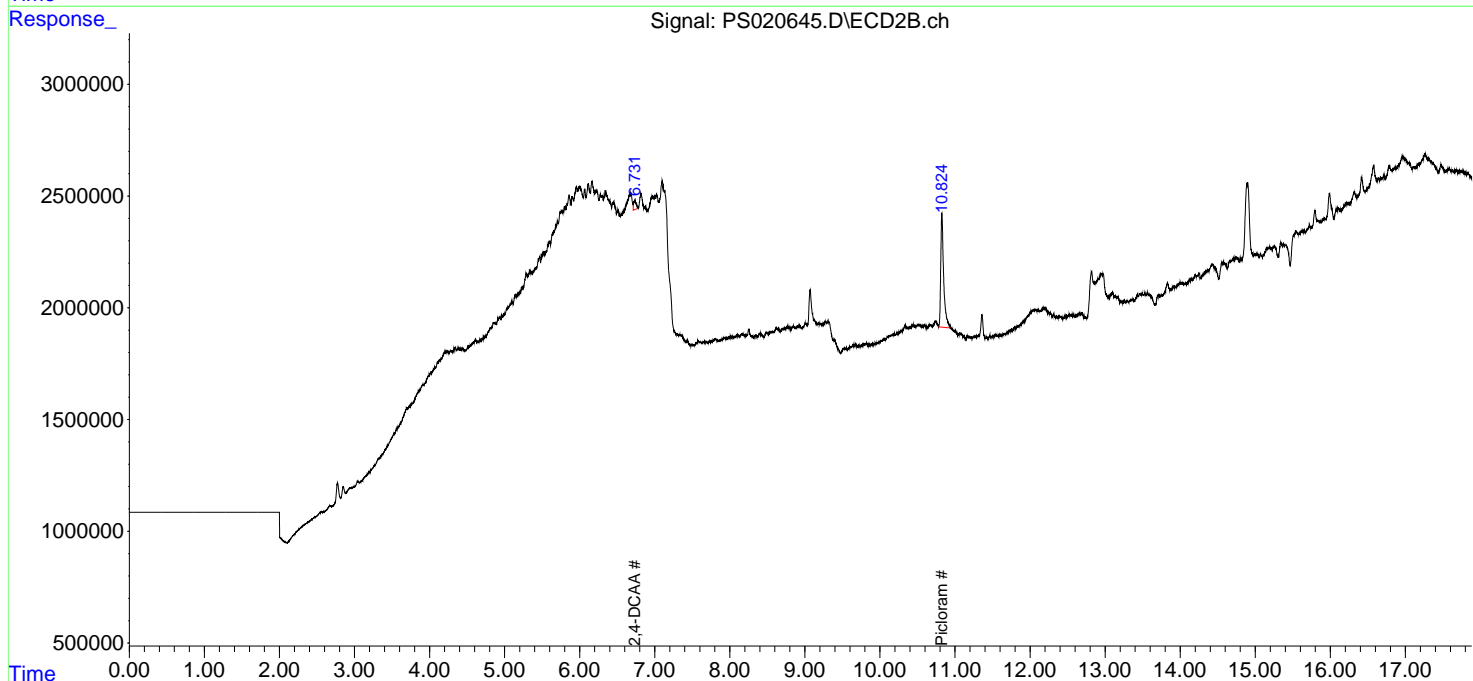
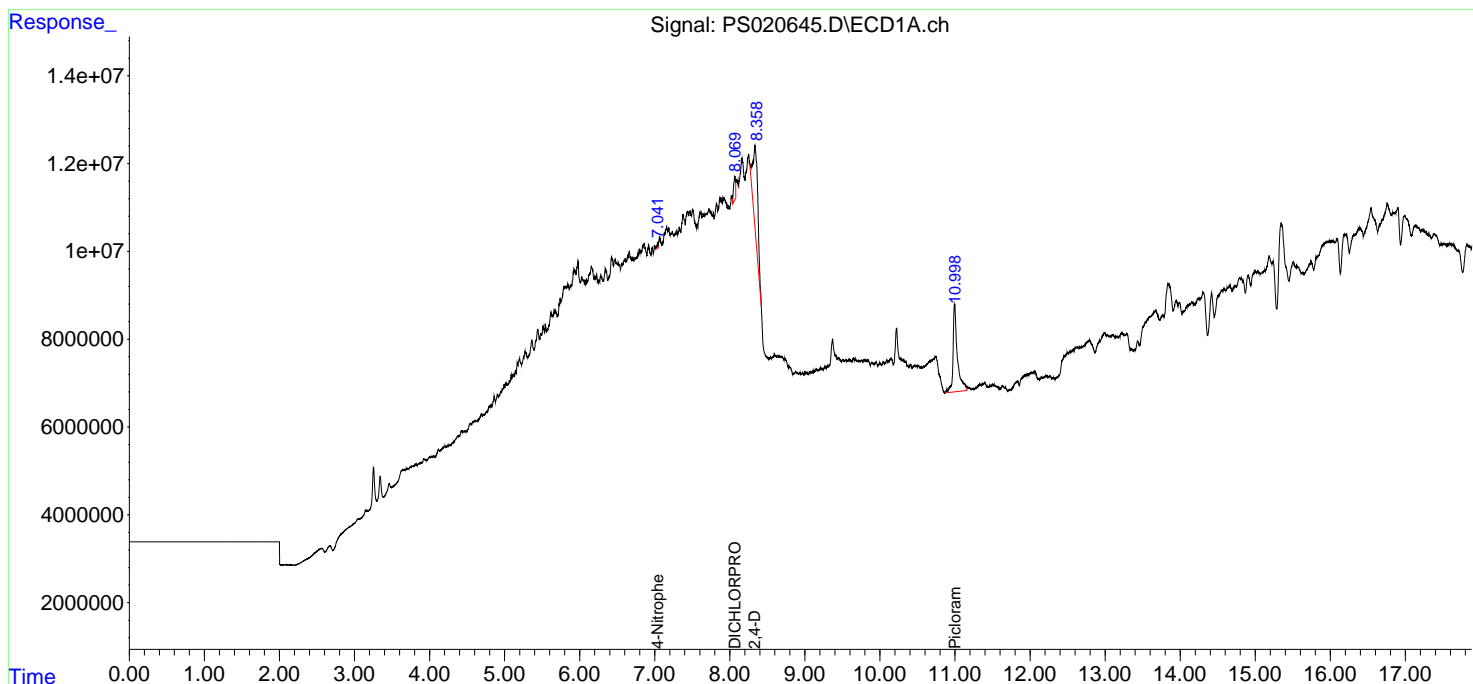
(f)=RT Delta > 1/2 Window (#)=Amounts differ by > 25% (m)=manual int.

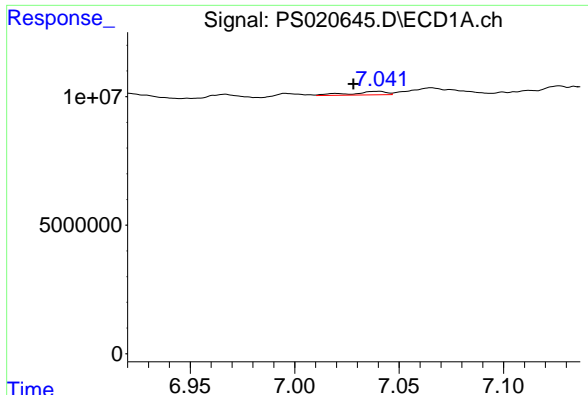
Data Path : Z:\pestpcbsrv\HPCHEM1\ECD\_S\Data\PS092622\  
Data File : PS020645.D  
Signal(s) : Signal #1: ECD1A.ch Signal #2: ECD2B.ch  
Acq On : 26 Sep 2022 10:02  
Operator : AJ\MA  
Sample : HEXANE  
Misc :  
ALS Vial : 1 Sample Multiplier: 1

Instrument :  
ECD\_S  
ClientSampleId :  
HEXANE

Integration File signal 1: autoint1.e  
Integration File signal 2: autoint2.e  
Quant Time: Sep 27 00:09:26 2022  
Quant Method : Z:\pestpcbsrv\HPCHEM1\ECD\_S\Method\PS091322.M  
Quant Title : 8080.M  
QLast Update : Wed Sep 14 02:51:16 2022  
Response via : Initial Calibration  
Integrator: ChemStation

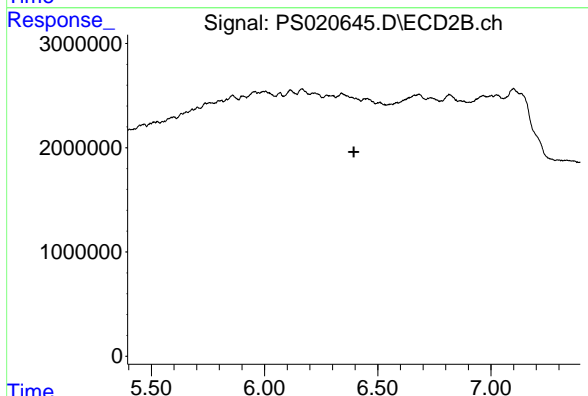
Volume Inj. : 2 µl  
Signal #1 Phase : Rtx-CLPesticides Signal #2 Phase: Rtx-CLPesticides2  
Signal #1 Info : 30M x 0.32mm x 0.5 Signal #2 Info : 30M x 0.32mm x 0.25µm



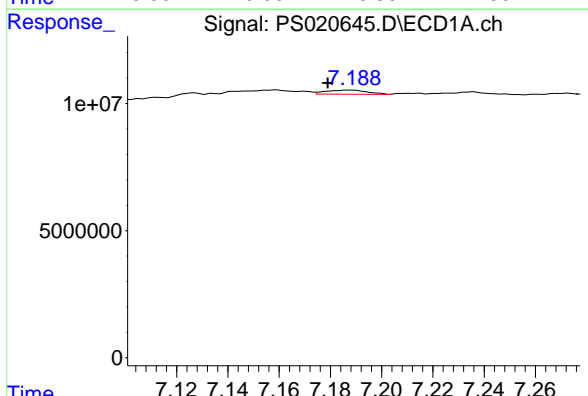


#3 4-Nitrophenol  
 R.T.: 7.039 min  
 Delta R.T.: 0.011 min  
 Response: 1619310  
 Conc: 127.94 ng/ml

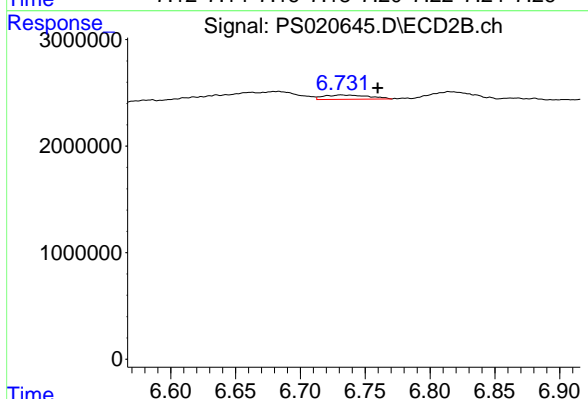
Instrument : ECD\_S  
 ClientSampleId : HEXANE



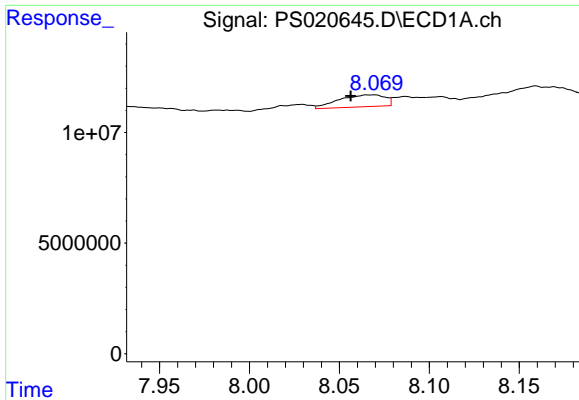
#3 4-Nitrophenol  
 R.T.: 0.000 min  
 Exp R.T. : 6.394 min  
 Response: 0  
 Conc: N.D.



#4 2,4-DCAA  
 R.T.: 7.187 min  
 Delta R.T.: 0.008 min  
 Response: 1793035  
 Conc: N.D.



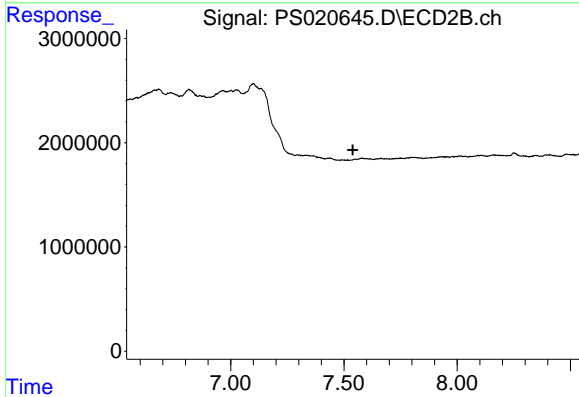
#4 2,4-DCAA  
 R.T.: 6.731 min  
 Delta R.T.: -0.028 min  
 Response: 984533  
 Conc: 1.16 ng/ml



#8 DICHLORPROP

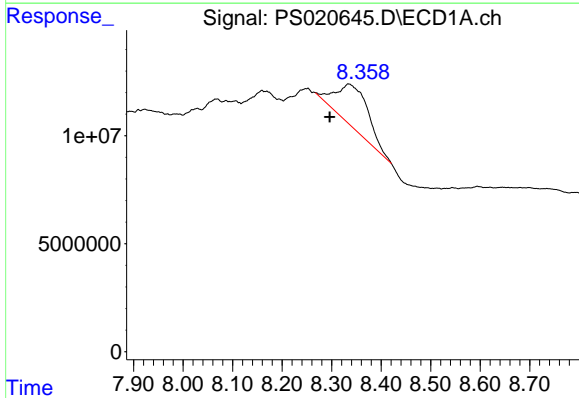
R.T.: 8.067 min  
 Delta R.T.: 0.011 min  
 Response: 9591851  
 Conc: 2.66 ng/ml

Instrument :  
 ECD\_S  
 ClientSampleId :  
 HEXANE



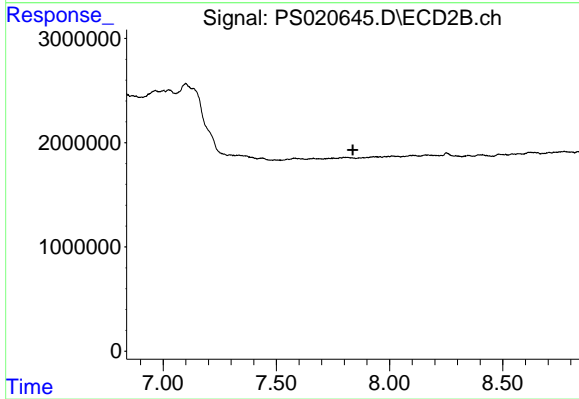
#8 DICHLORPROP

R.T.: 0.000 min  
 Exp R.T. : 7.540 min  
 Response: 0  
 Conc: N.D.



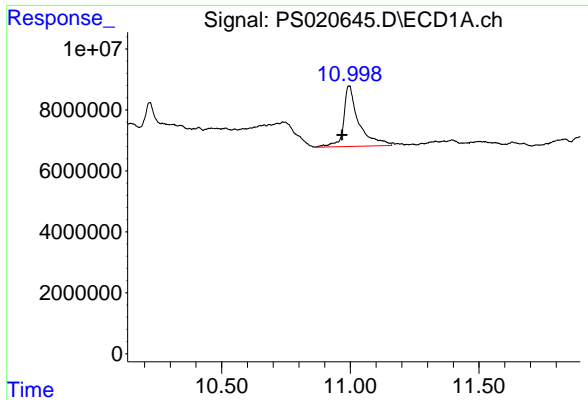
#9 2,4-D

R.T.: 8.335 min  
 Delta R.T.: 0.038 min  
 Response: 85913159  
 Conc: 18.48 ng/ml



#9 2,4-D

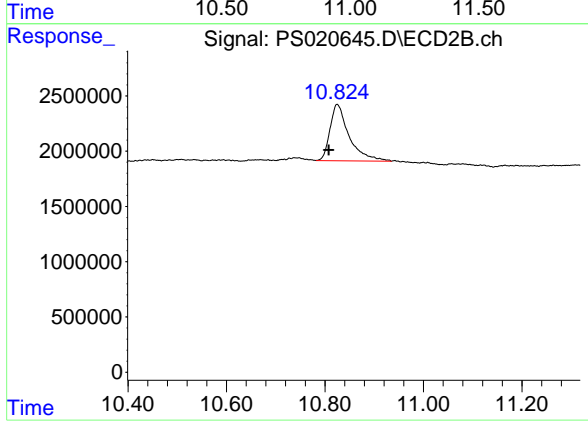
R.T.: 0.000 min  
 Exp R.T. : 7.838 min  
 Response: 0  
 Conc: N.D.



#15 Picloram

R.T.: 10.995 min  
Delta R.T.: 0.027 min  
Response: 80850249  
Conc: 2.69 ng/ml

Instrument :  
ECD\_S  
ClientSampleId :  
HEXANE



#15 Picloram

R.T.: 10.825 min  
Delta R.T.: 0.017 min  
Response: 13735253  
Conc: 1.71 ng/ml