

Data Path : Z:\pestpcbsrv\HPCHEM1\ECD_S\Data\PS092622\
 Data File : PS020648.D
 Signal(s) : Signal #1: ECD1A.ch Signal #2: ECD2B.ch
 Acq On : 26 Sep 2022 11:54
 Operator : AJ\MA
 Sample : N4782-01
 Misc :
 ALS Vial : 4 Sample Multiplier: 1

Instrument :
 ECD_S
 ClientSampleId :
 SASP2-T-1-(0-6)

Integration File signal 1: autoint1.e
 Integration File signal 2: autoint2.e
 Quant Time: Sep 27 00:10:22 2022
 Quant Method : Z:\pestpcbsrv\HPCHEM1\ECD_S\Method\PS091322.M
 Quant Title : 8080.M
 QLast Update : Wed Sep 14 02:51:16 2022
 Response via : Initial Calibration
 Integrator: ChemStation

Volume Inj. : 2 µl
 Signal #1 Phase : Rtx-CLPesticides Signal #2 Phase: Rtx-CLPesticides2
 Signal #1 Info : 30M x 0.32mm x0.5 Signal #2 Info : 30M x 0.32mm x 0.25µm

	Compound	RT#1	RT#2	Resp#1	Resp#2	ng/ml	ng/ml

System Monitoring Compounds							
4) S	2,4-DCAA	7.178	6.757	825.7E6	195.7E6	239.936	229.811
Target Compounds							
2) T	3,5-DICHL...	6.416	5.966	-824627	83085776	N.D.	60.885
3) T	4-Nitroph...	7.009	6.402	15442530	5368276	135.132	11.392 #
5) T	DICAMBA	7.378	6.957	8389863	-1776232	<MDL	N.D. #
6) T	MCPD	7.532	7.018	63125313	5136871	6.062	1.779 #
7) T	MCPA	7.694	7.211	55616399	22693856	3.750	5.256 #
8) T	DICHLORPROP	8.074	7.541	107.8E6	50909225	29.898	50.457 #
9) T	2,4-D	8.328	7.807	74321426	15280214	15.990	12.031
10) T	Pentachlo...	8.592	8.251	92612538	19094724	2.008	1.347 #
11) T	2,4,5-TP ...	9.138	8.652	38207685	8549094	1.869	1.444
12) T	2,4,5-T	9.438	8.985	36045852	23675532	1.628	4.345 #
13) T	2,4-DB	9.986	9.530	39538625	30242627	10.888	42.275 #
14) T	DINOSEB	11.104	9.841	271.8E6	86042736	14.801	20.067 #
15) T	Picloram	10.970	10.807	1070.9E6	216.6E6	35.585	26.895
16) T	DCPA	11.356	10.739	67139749	20486167	2.621	2.778

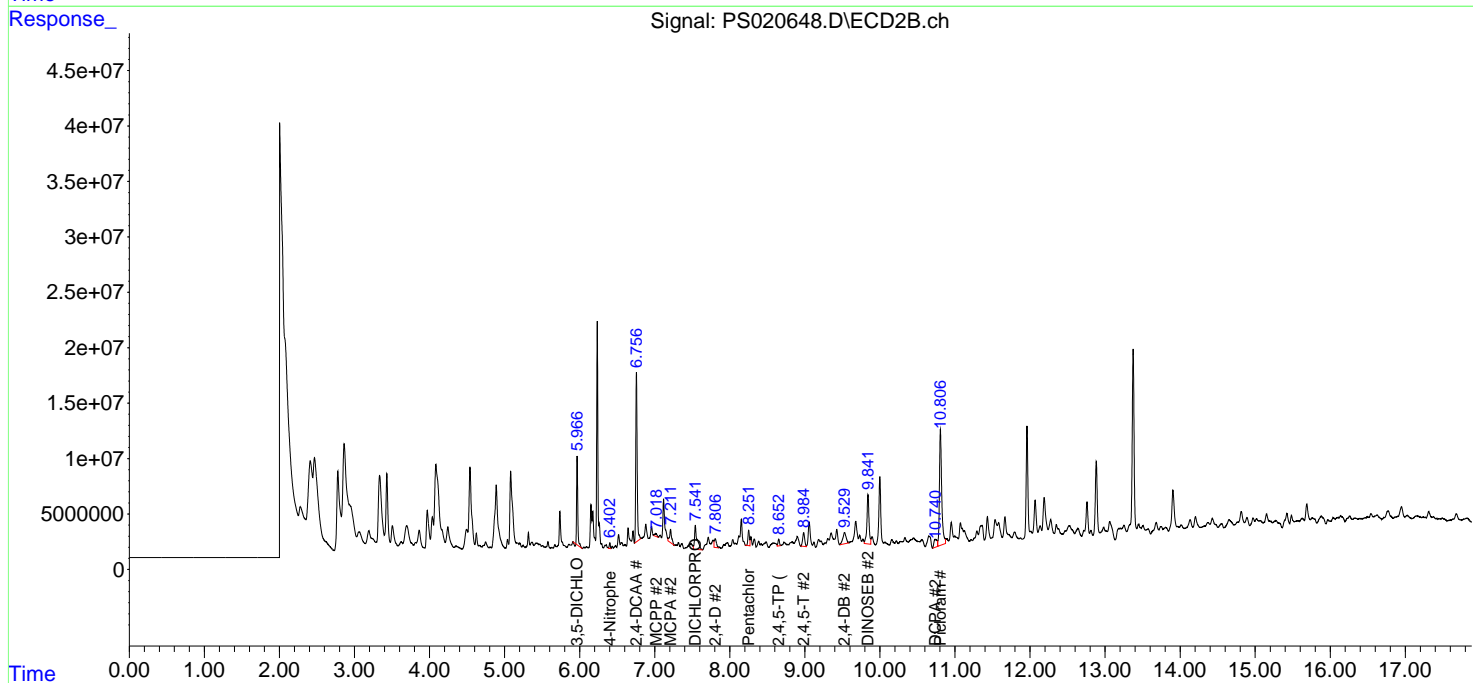
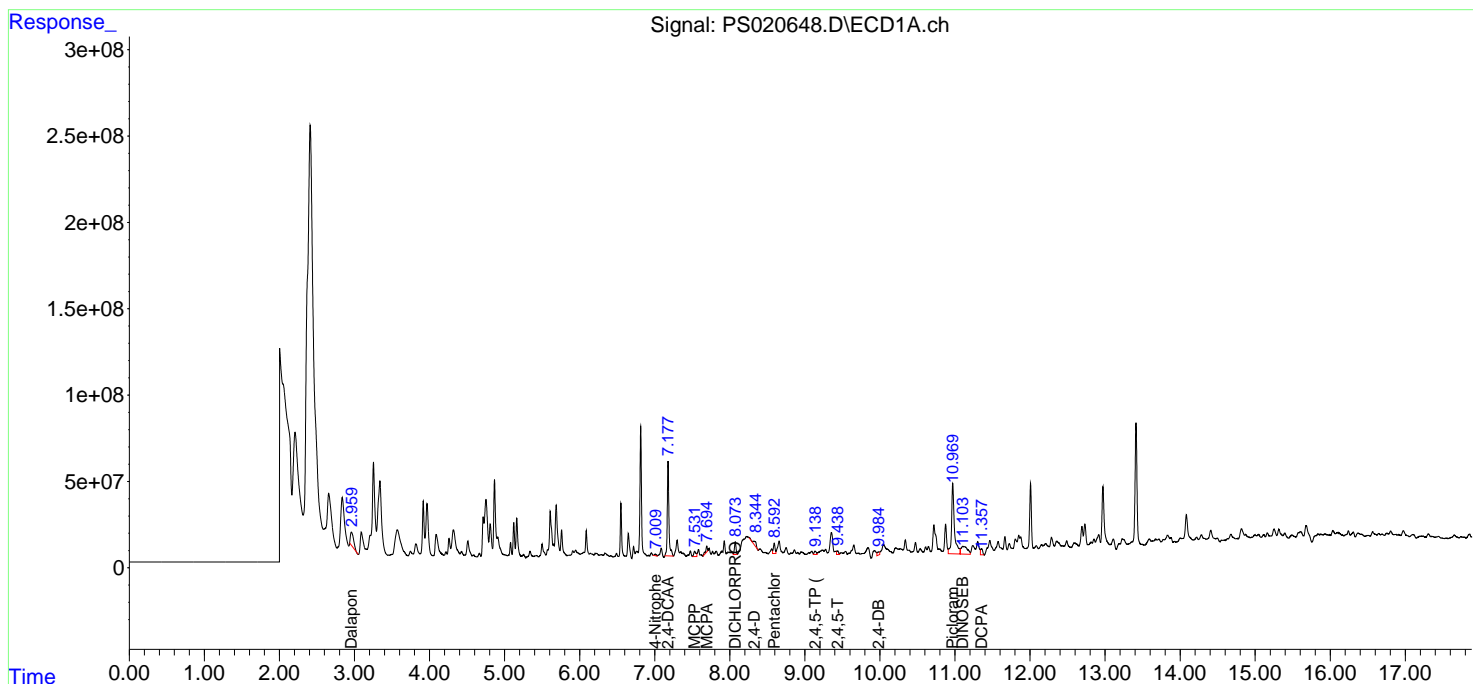
(f)=RT Delta > 1/2 Window (#)=Amounts differ by > 25% (m)=manual int.

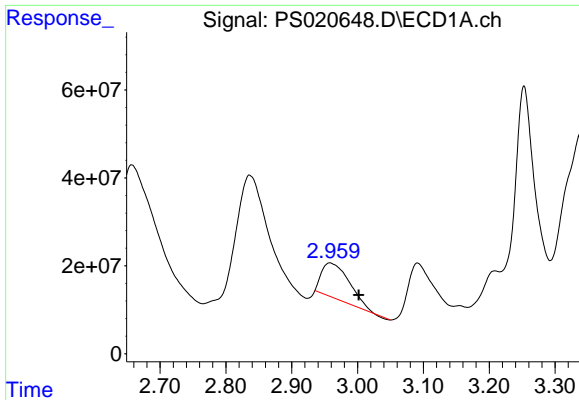
Data Path : Z:\pestpcbsrv\HPCHEM1\ECD_S\Data\PS092622\
 Data File : PS020648.D
 Signal(s) : Signal #1: ECD1A.ch Signal #2: ECD2B.ch
 Acq On : 26 Sep 2022 11:54
 Operator : AJ\MA
 Sample : N4782-01
 Misc :
 ALS Vial : 4 Sample Multiplier: 1

Instrument :
 ECD_S
 ClientSampleId :
 SASP2-T-1-(0-6)

Integration File signal 1: autoint1.e
 Integration File signal 2: autoint2.e
 Quant Time: Sep 27 00:10:22 2022
 Quant Method : Z:\pestpcbsrv\HPCHEM1\ECD_S\Method\PS091322.M
 Quant Title : 8080.M
 QLast Update : Wed Sep 14 02:51:16 2022
 Response via : Initial Calibration
 Integrator: ChemStation

Volume Inj. : 2 µl
 Signal #1 Phase : Rtx-CLPesticides Signal #2 Phase: Rtx-CLPesticides2
 Signal #1 Info : 30M x 0.32mm x0.5 Signal #2 Info : 30M x 0.32mm x 0.25µm

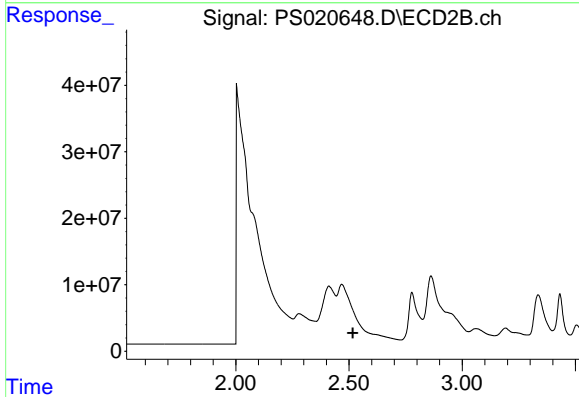




#1 Dalapon

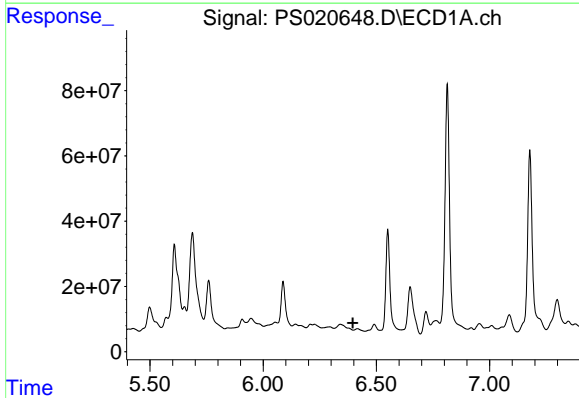
R.T.: 2.958 min
 Delta R.T.: -0.044 min
 Response: 231708873
 Conc: 46.17 ng/ml

Instrument :
 ECD_S
 ClientSampleId :
 SASP2-T-1-(0-6)



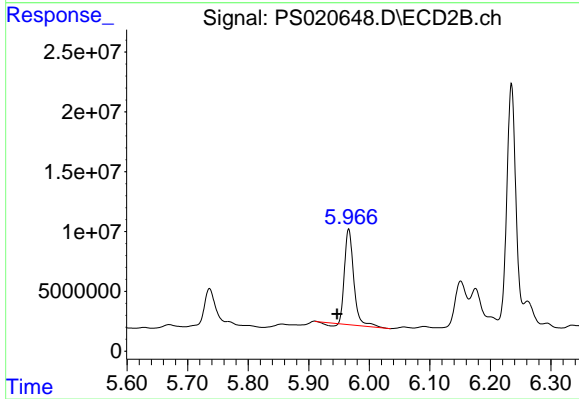
#1 Dalapon

R.T.: 2.467 min
 Delta R.T.: -0.050 min
 Response: -120750237
 Conc: N.D.



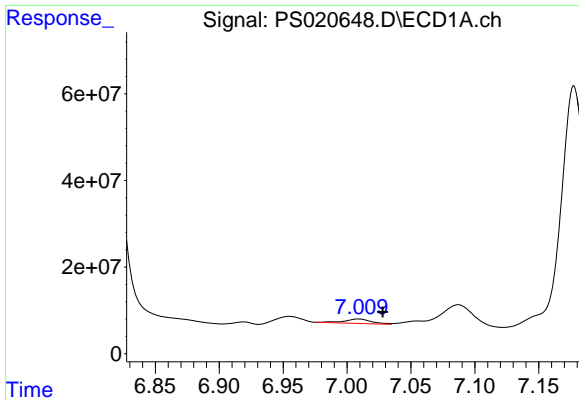
#2 3,5-DICHLOROBENZOIC ACID

R.T.: 6.416 min
 Delta R.T.: 0.020 min
 Response: -824627
 Conc: N.D.



#2 3,5-DICHLOROBENZOIC ACID

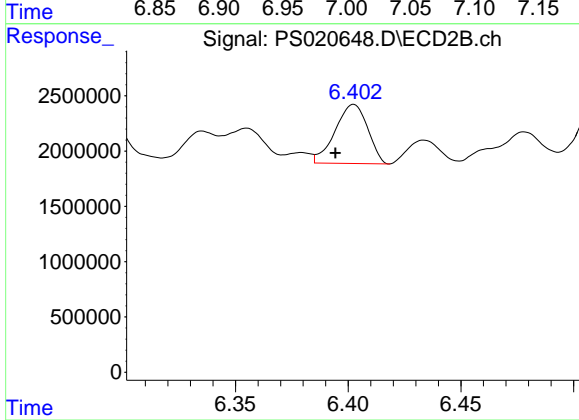
R.T.: 5.966 min
 Delta R.T.: 0.019 min
 Response: 83085776
 Conc: 60.89 ng/ml



#3 4-Nitrophenol

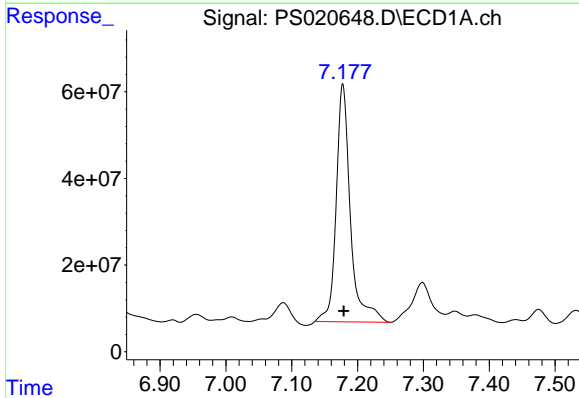
R.T.: 7.009 min
Delta R.T.: -0.019 min
Response: 15442530
Conc: 135.13 ng/ml

Instrument :
ECD_S
ClientSampleId :
SASP2-T-1-(0-6)



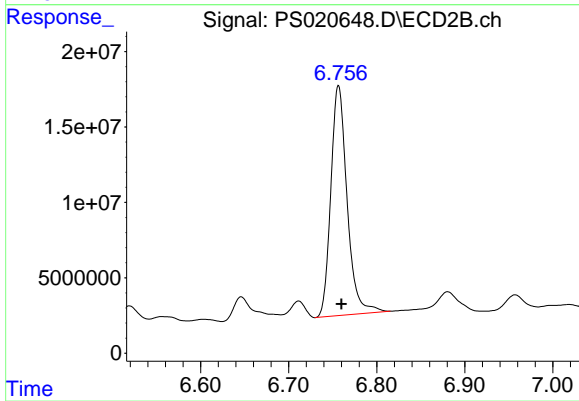
#3 4-Nitrophenol

R.T.: 6.402 min
Delta R.T.: 0.008 min
Response: 5368276
Conc: 11.39 ng/ml



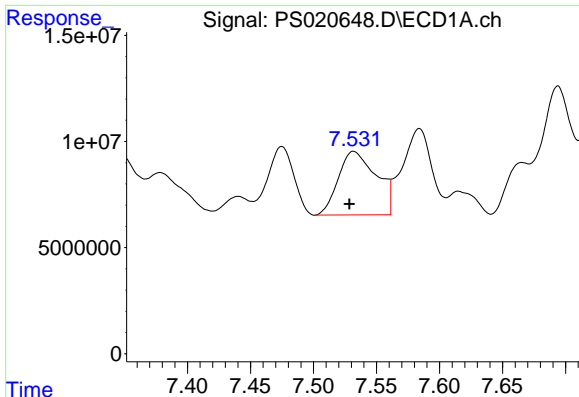
#4 2,4-DCAA

R.T.: 7.178 min
Delta R.T.: -0.001 min
Response: 825737391
Conc: 239.94 ng/ml



#4 2,4-DCAA

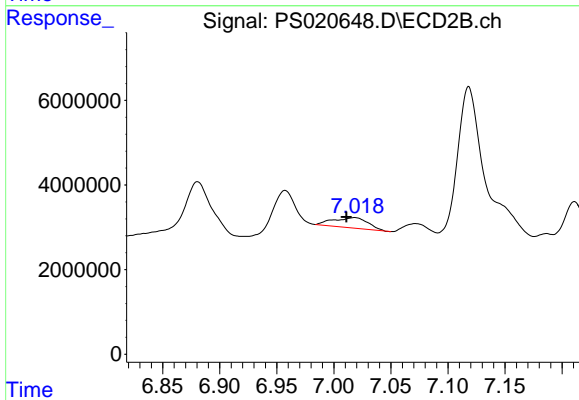
R.T.: 6.757 min
Delta R.T.: -0.003 min
Response: 195729309
Conc: 229.81 ng/ml



#6 MCPP

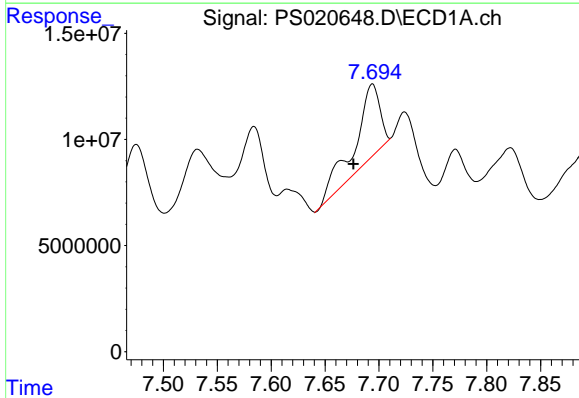
R.T.: 7.532 min
 Delta R.T.: 0.003 min
 Response: 63125313
 Conc: 6.06 ug/ml

Instrument :
 ECD_S
 ClientSampleId :
 SASP2-T-1-(0-6)



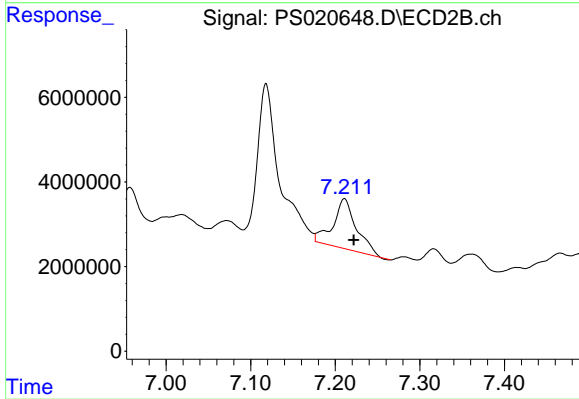
#6 MCPP

R.T.: 7.018 min
 Delta R.T.: 0.007 min
 Response: 5136871
 Conc: 1.78 ug/ml



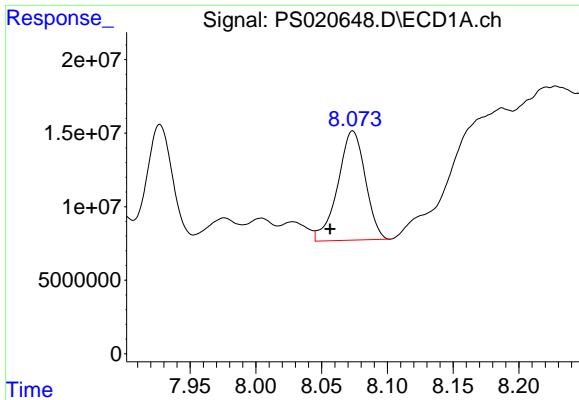
#7 MCPA

R.T.: 7.694 min
 Delta R.T.: 0.018 min
 Response: 55616399
 Conc: 3.75 ug/ml



#7 MCPA

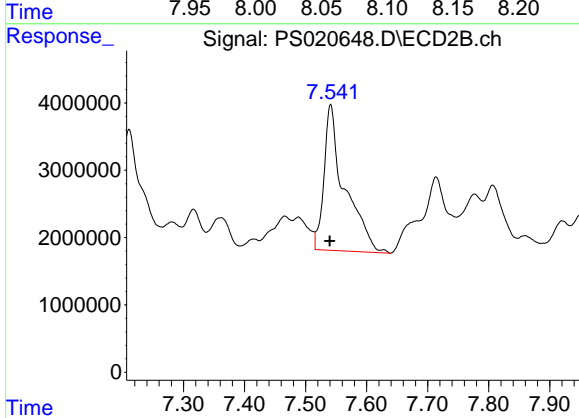
R.T.: 7.211 min
 Delta R.T.: -0.011 min
 Response: 22693856
 Conc: 5.26 ug/ml



#8 DICHLORPROP

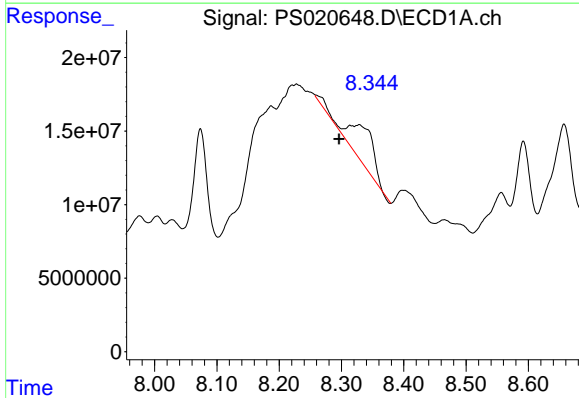
R.T.: 8.074 min
 Delta R.T.: 0.017 min
 Response: 107798255
 Conc: 29.90 ng/ml

Instrument :
 ECD_S
 ClientSampleId :
 SASP2-T-1-(0-6)



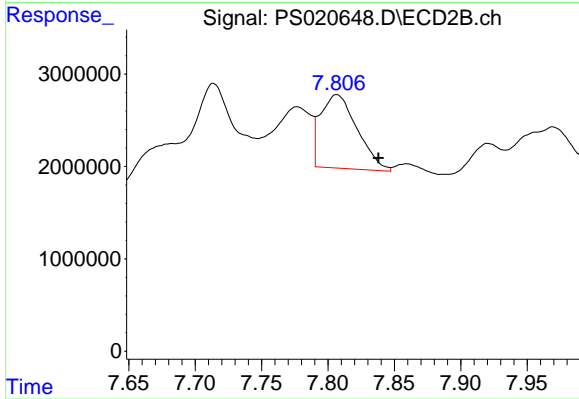
#8 DICHLORPROP

R.T.: 7.541 min
 Delta R.T.: 0.001 min
 Response: 50909225
 Conc: 50.46 ng/ml



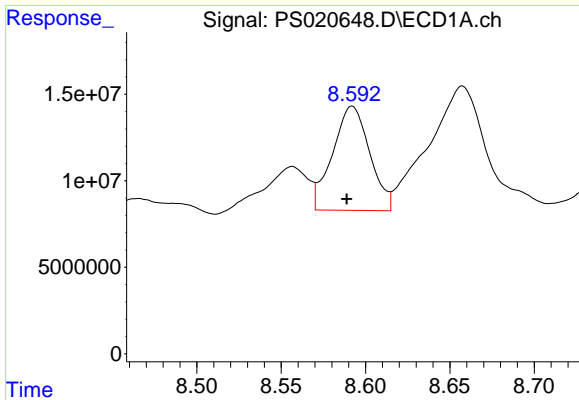
#9 2,4-D

R.T.: 8.328 min
 Delta R.T.: 0.031 min
 Response: 74321426
 Conc: 15.99 ng/ml



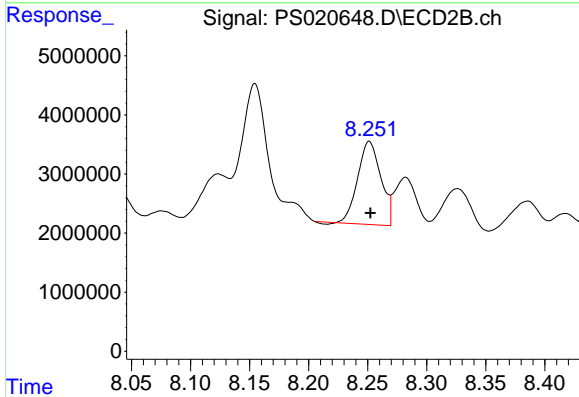
#9 2,4-D

R.T.: 7.807 min
 Delta R.T.: -0.031 min
 Response: 15280214
 Conc: 12.03 ng/ml

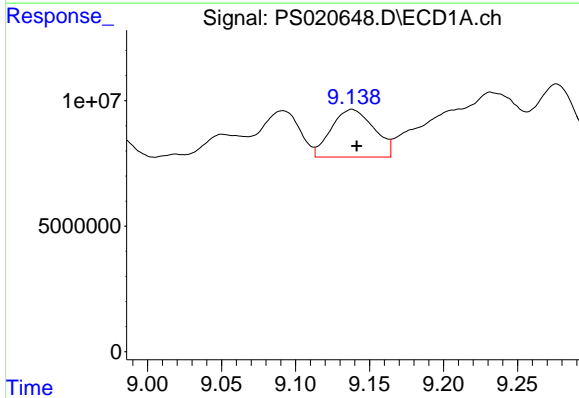


#10 Pentachlorophenol
 R.T.: 8.592 min
 Delta R.T.: 0.003 min
 Response: 92612538
 Conc: 2.01 ng/ml

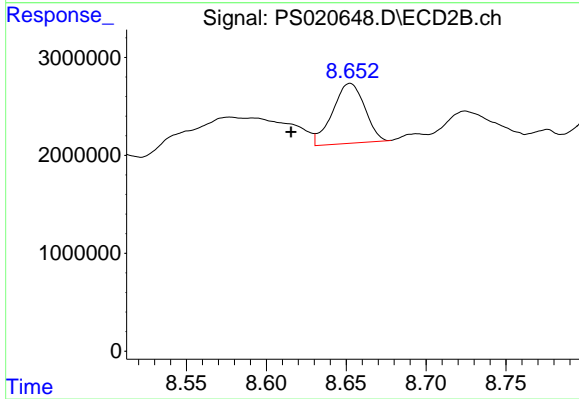
Instrument :
 ECD_S
 ClientSampleId :
 SASP2-T-1-(0-6)



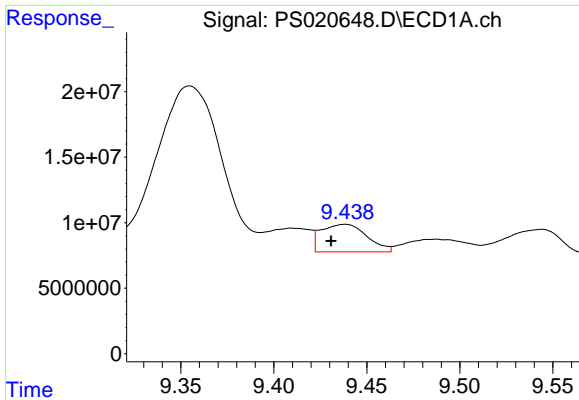
#10 Pentachlorophenol
 R.T.: 8.251 min
 Delta R.T.: 0.000 min
 Response: 19094724
 Conc: 1.35 ng/ml



#11 2,4,5-TP (SILVEX)
 R.T.: 9.138 min
 Delta R.T.: -0.003 min
 Response: 38207685
 Conc: 1.87 ng/ml



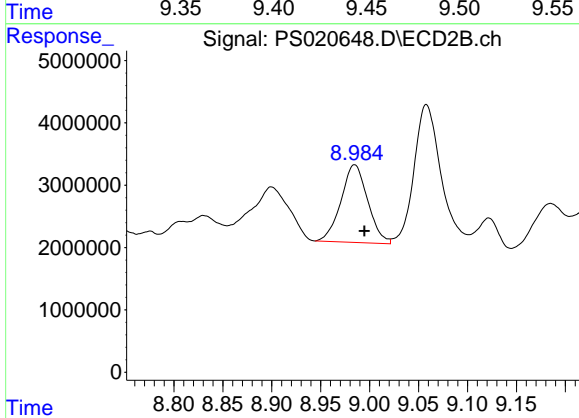
#11 2,4,5-TP (SILVEX)
 R.T.: 8.652 min
 Delta R.T.: 0.037 min
 Response: 8549094
 Conc: 1.44 ng/ml



#12 2,4,5-T

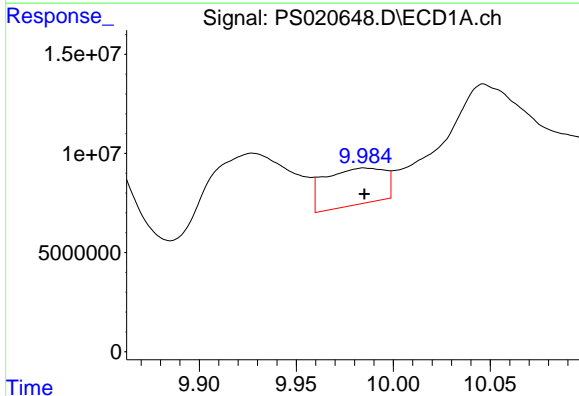
R.T.: 9.438 min
 Delta R.T.: 0.007 min
 Response: 36045852
 Conc: 1.63 ng/ml

Instrument :
 ECD_S
 ClientSampleId :
 SASP2-T-1-(0-6)



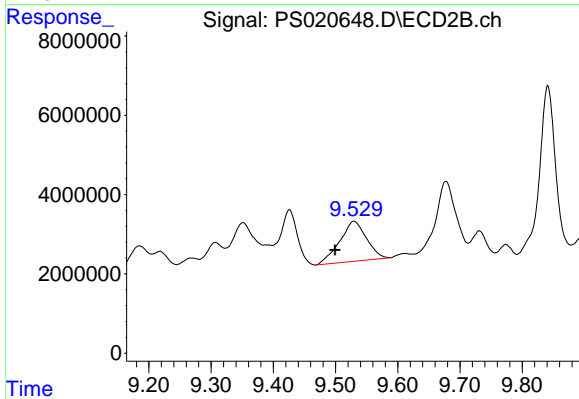
#12 2,4,5-T

R.T.: 8.985 min
 Delta R.T.: -0.010 min
 Response: 23675532
 Conc: 4.34 ng/ml



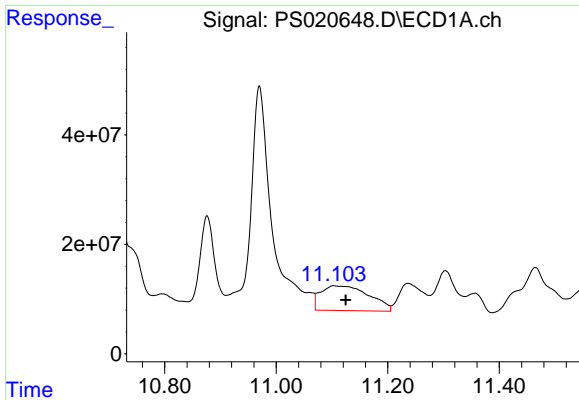
#13 2,4-DB

R.T.: 9.986 min
 Delta R.T.: 0.000 min
 Response: 39538625
 Conc: 10.89 ng/ml



#13 2,4-DB

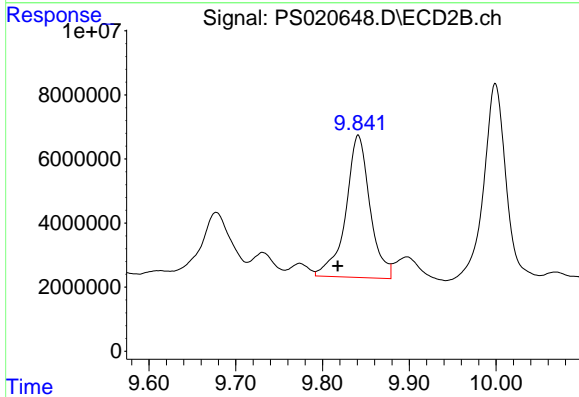
R.T.: 9.530 min
 Delta R.T.: 0.030 min
 Response: 30242627
 Conc: 42.27 ng/ml



#14 DINOSEB

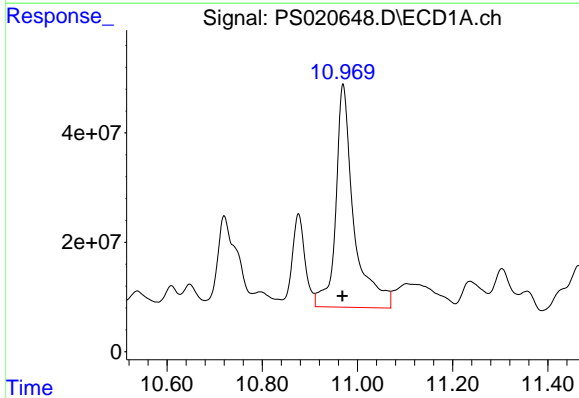
R.T.: 11.104 min
 Delta R.T.: -0.021 min
 Response: 271818516
 Conc: 14.80 ng/ml

Instrument :
 ECD_S
 ClientSampleId :
 SASP2-T-1-(0-6)



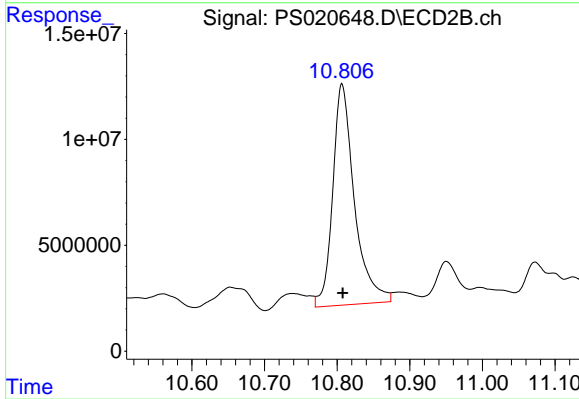
#14 DINOSEB

R.T.: 9.841 min
 Delta R.T.: 0.023 min
 Response: 86042736
 Conc: 20.07 ng/ml



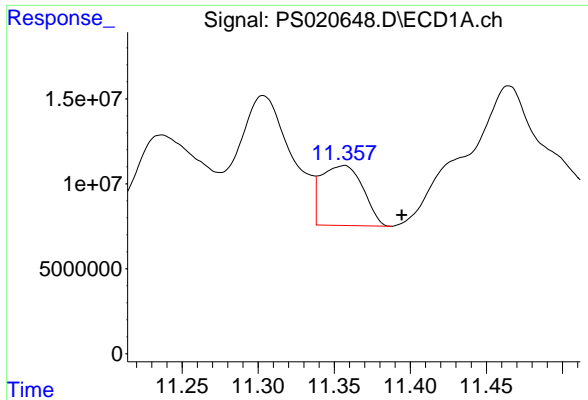
#15 Picloram

R.T.: 10.970 min
 Delta R.T.: 0.002 min
 Response: 1070869060
 Conc: 35.59 ng/ml



#15 Picloram

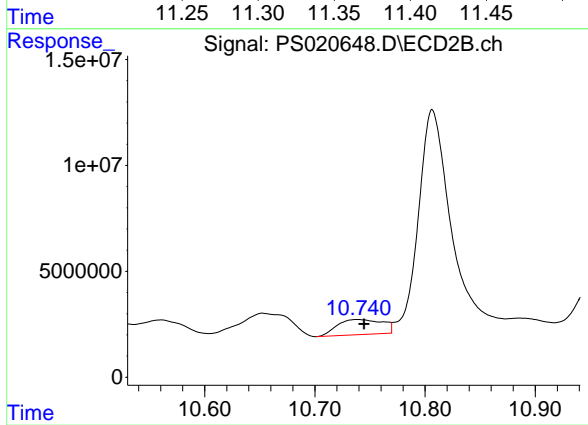
R.T.: 10.807 min
 Delta R.T.: 0.000 min
 Response: 216586729
 Conc: 26.90 ng/ml



#16 DCPA

R.T.: 11.356 min
 Delta R.T.: -0.039 min
 Response: 67139749
 Conc: 2.62 ng/ml

Instrument :
 ECD_S
 ClientSampleId :
 SASP2-T-1-(0-6)



#16 DCPA

R.T.: 10.739 min
 Delta R.T.: -0.006 min
 Response: 20486167
 Conc: 2.78 ng/ml