

Data Path : Z:\pestpcbsrv\HPCHEM1\ECD\_S\Data\PS092622\  
 Data File : PS020651.D  
 Signal(s) : Signal #1: ECD1A.ch Signal #2: ECD2B.ch  
 Acq On : 26 Sep 2022 13:06  
 Operator : AJ\MA  
 Sample : N4780-01  
 Misc :  
 ALS Vial : 7 Sample Multiplier: 1

Instrument :  
 ECD\_S  
 ClientSampleId :  
 SP-1

Integration File signal 1: autoint1.e  
 Integration File signal 2: autoint2.e  
 Quant Time: Sep 27 00:11:34 2022  
 Quant Method : Z:\pestpcbsrv\HPCHEM1\ECD\_S\Method\PS091322.M  
 Quant Title : 8080.M  
 QLast Update : Wed Sep 14 02:51:16 2022  
 Response via : Initial Calibration  
 Integrator: ChemStation

Volume Inj. : 2 µl  
 Signal #1 Phase : Rtx-CLPesticides Signal #2 Phase: Rtx-CLPesticides2  
 Signal #1 Info : 30M x 0.32mm x0.5 Signal #2 Info : 30M x 0.32mm x 0.25µm

Compound	RT#1	RT#2	Resp#1	Resp#2	ng/ml	ng/ml
System Monitoring Compounds						
4) S 2,4-DCAA	7.173	6.758	1176.3E6	289.7E6	341.804	340.151
Target Compounds						
1) T Dalapon	2.959f	2.477f	263.6E6	57777027	52.515	47.650
2) T 3,5-DICHL...	6.378	5.968	-10093628	77873507	N.D.	57.066
3) T 4-Nitroph...	7.003	6.403	8203403	7105754	131.368	15.080 #
5) T DICAMBA	7.372	6.956	17693078	2152633	1.294	<MDL #
6) T MCPP	7.528	7.020	43575913	4289566	4.185	1.485 #
7) T MCPA	7.660	7.212	26685496	36045759	1.799	8.348 #
8) T DICHLORPROP	8.049	7.543	32133857	3915934	8.912	3.881 #
9) T 2,4-D	8.289	7.807	-186143	22009686	N.D.	17.330
10) T Pentachlo...	8.583	8.252	42846129	5342344	<MDL	<MDL #
11) T 2,4,5-TP ...	9.140	8.585	32249900	12657243	1.578	2.138 #
12) T 2,4,5-T	9.437	8.984	50452436	19217455	2.278	3.526 #
13) T 2,4-DB	9.974	9.507	37958526	9181212	10.453	12.834
14) T DINOSEB	11.101	9.842	399.9E6	73069434	21.775	17.041
15) T Picloram	10.974	10.815	123.2E6	38373350	4.094	4.765
16) T DCPA	11.425	10.740	78255341	14326624	3.055	1.942 #

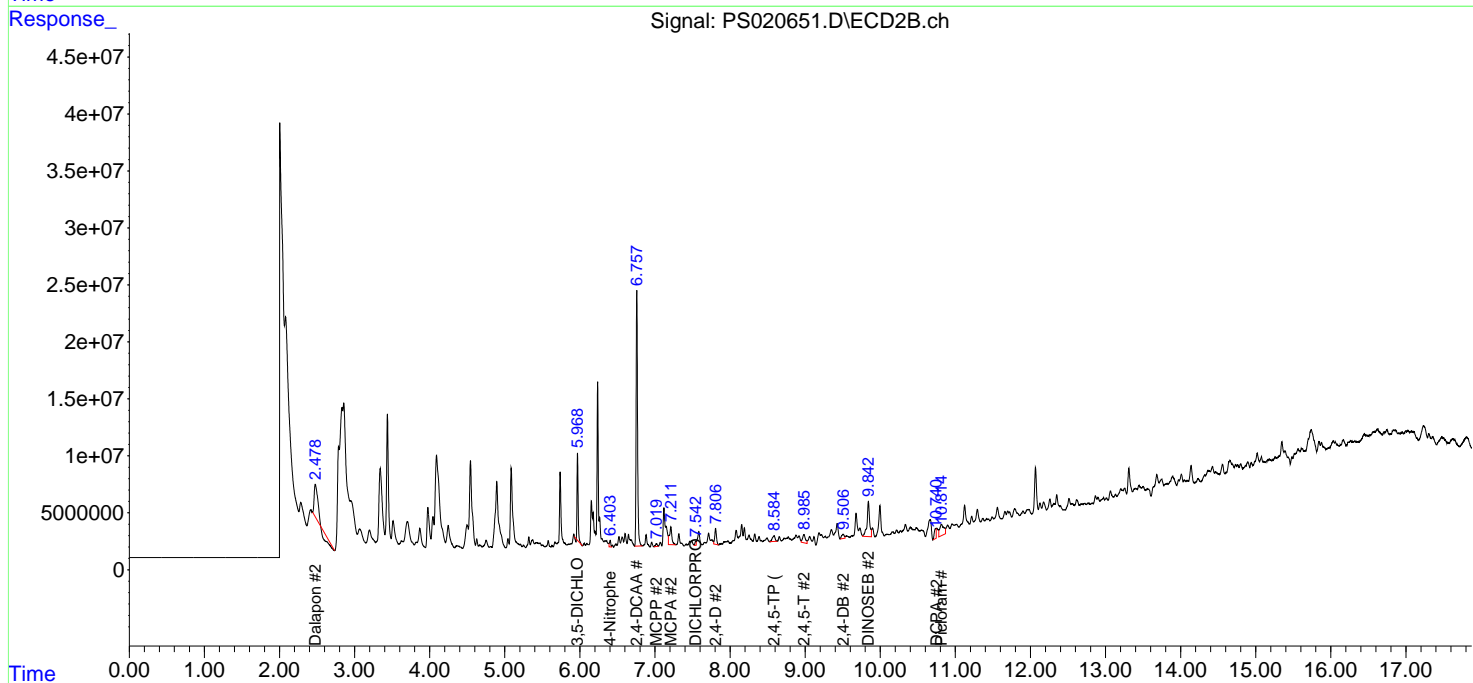
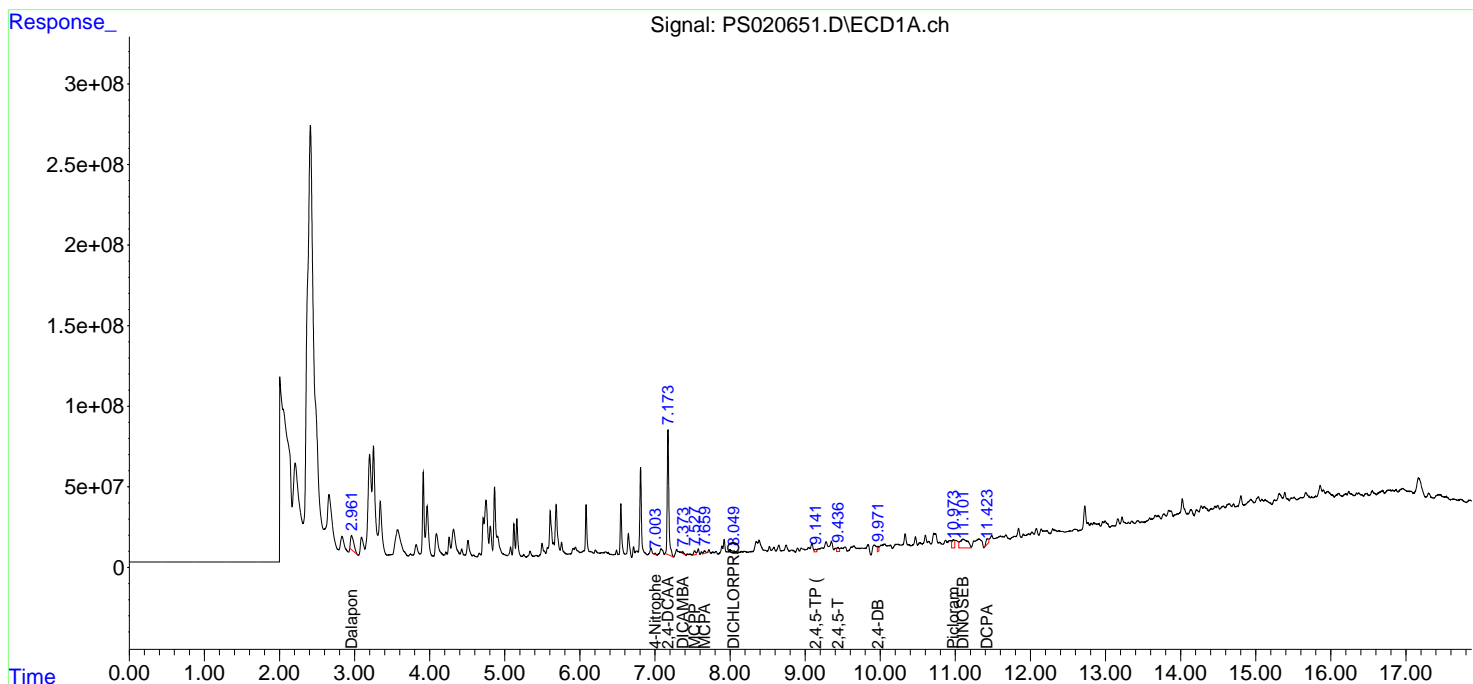
(f)=RT Delta > 1/2 Window (#)=Amounts differ by > 25% (m)=manual int.

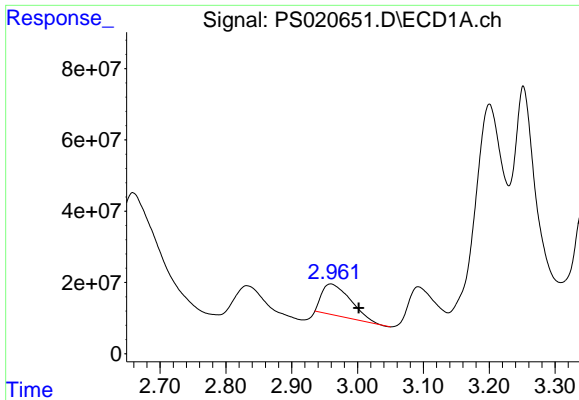
Data Path : Z:\pestpcbsrv\HPCHEM1\ECD\_S\Data\PS092622\  
 Data File : PS020651.D  
 Signal(s) : Signal #1: ECD1A.ch Signal #2: ECD2B.ch  
 Acq On : 26 Sep 2022 13:06  
 Operator : AJ\MA  
 Sample : N4780-01  
 Misc :  
 ALS Vial : 7 Sample Multiplier: 1

Instrument :  
 ECD\_S  
 ClientSampleId :  
 SP-1

Integration File signal 1: autoint1.e  
 Integration File signal 2: autoint2.e  
 Quant Time: Sep 27 00:11:34 2022  
 Quant Method : Z:\pestpcbsrv\HPCHEM1\ECD\_S\Method\PS091322.M  
 Quant Title : 8080.M  
 QLast Update : Wed Sep 14 02:51:16 2022  
 Response via : Initial Calibration  
 Integrator: ChemStation

Volume Inj. : 2 µl  
 Signal #1 Phase : Rtx-CLPesticides Signal #2 Phase: Rtx-CLPesticides2  
 Signal #1 Info : 30M x 0.32mm x0.5 Signal #2 Info : 30M x 0.32mm x 0.25µm

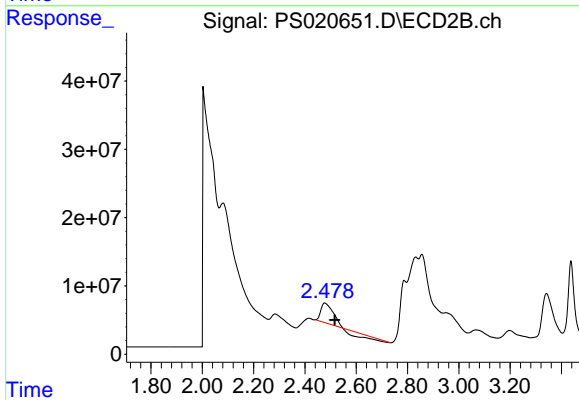




#1 Dalapon

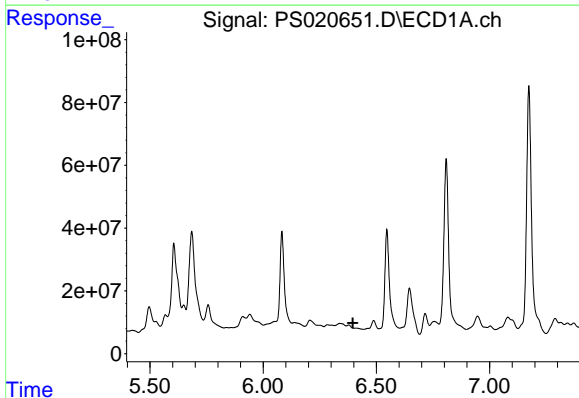
R.T.: 2.959 min  
 Delta R.T.: -0.043 min  
 Response: 263577522  
 Conc: 52.52 ng/ml

Instrument :  
 ECD\_S  
 ClientSampleId :  
 SP-1



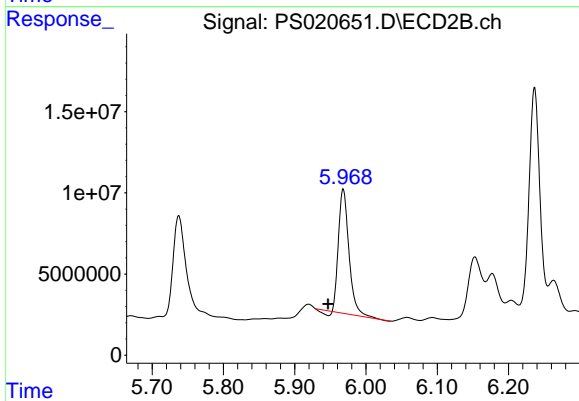
#1 Dalapon

R.T.: 2.477 min  
 Delta R.T.: -0.040 min  
 Response: 57777027  
 Conc: 47.65 ng/ml



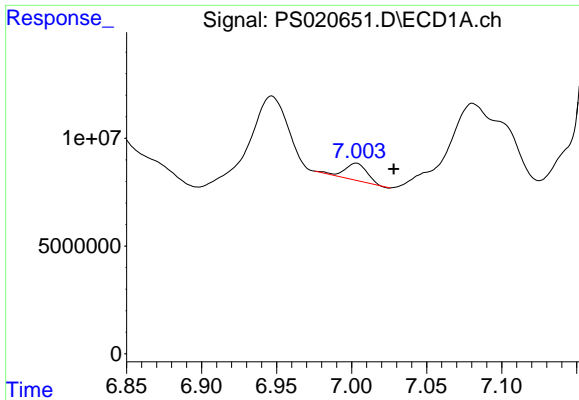
#2 3,5-DICHLOROBENZOIC ACID

R.T.: 6.378 min  
 Delta R.T.: -0.018 min  
 Response: -10093628  
 Conc: N.D.



#2 3,5-DICHLOROBENZOIC ACID

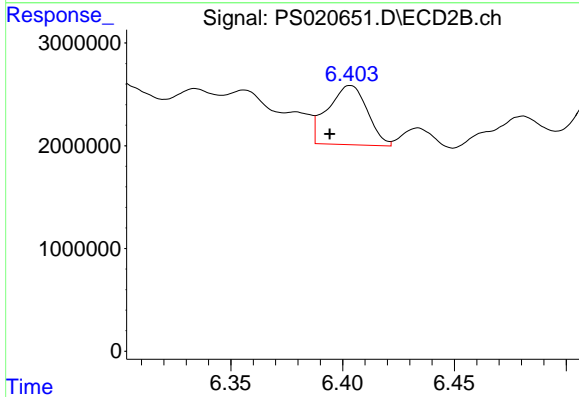
R.T.: 5.968 min  
 Delta R.T.: 0.021 min  
 Response: 77873507  
 Conc: 57.07 ng/ml



#3 4-Nitrophenol

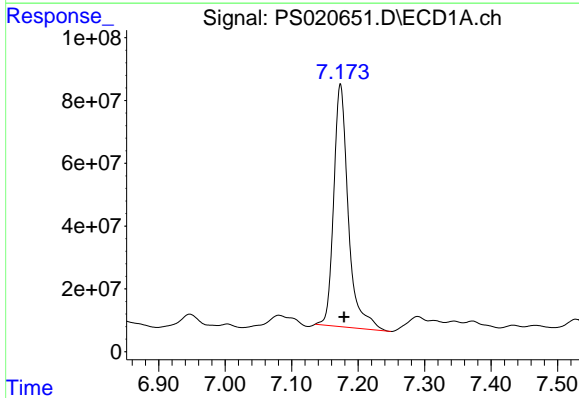
R.T.: 7.003 min  
 Delta R.T.: -0.025 min  
 Response: 8203403  
 Conc: 131.37 ng/ml

Instrument :  
 ECD\_S  
 ClientSampleId :  
 SP-1



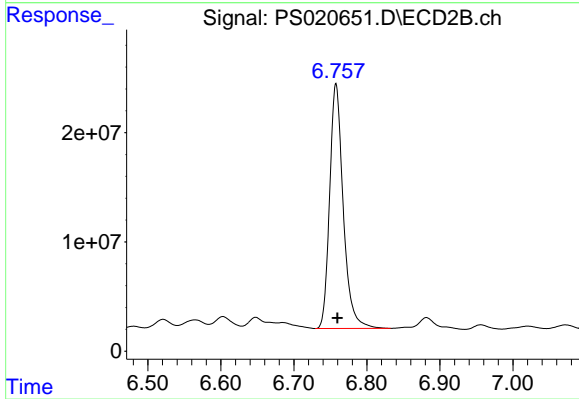
#3 4-Nitrophenol

R.T.: 6.403 min  
 Delta R.T.: 0.009 min  
 Response: 7105754  
 Conc: 15.08 ng/ml



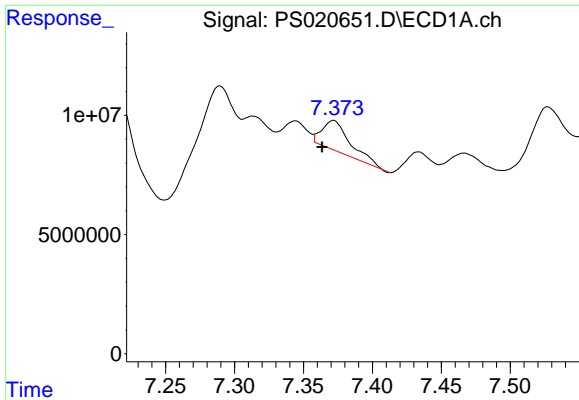
#4 2,4-DCAA

R.T.: 7.173 min  
 Delta R.T.: -0.005 min  
 Response: 1176312300  
 Conc: 341.80 ng/ml



#4 2,4-DCAA

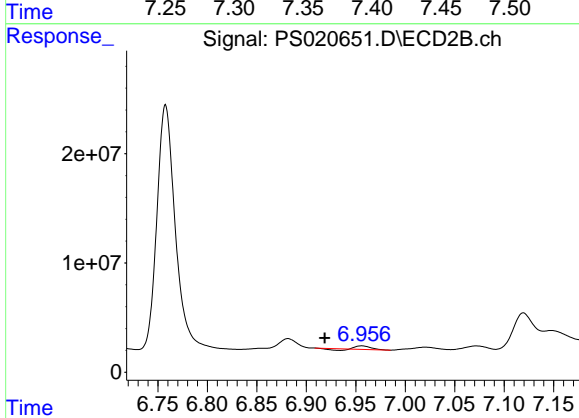
R.T.: 6.758 min  
 Delta R.T.: -0.002 min  
 Response: 289704710  
 Conc: 340.15 ng/ml



#5 DICAMBA

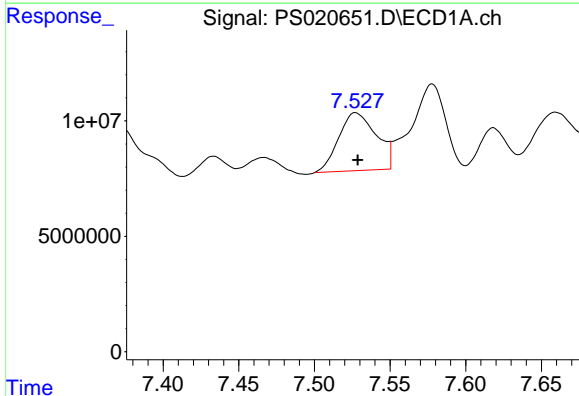
R.T.: 7.372 min  
 Delta R.T.: 0.008 min  
 Response: 17693078  
 Conc: 1.29 ng/ml

Instrument :  
 ECD\_S  
 ClientSampleId :  
 SP-1



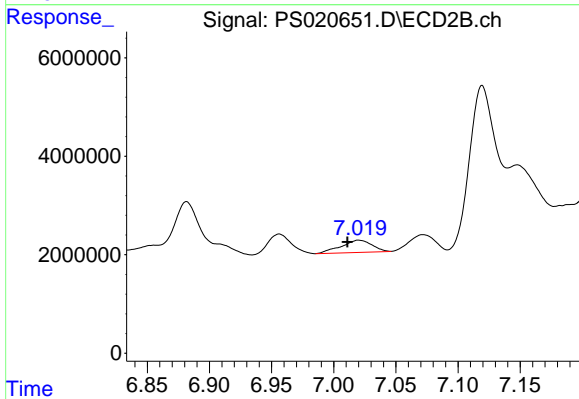
#5 DICAMBA

R.T.: 6.956 min  
 Delta R.T.: 0.037 min  
 Response: 2152633  
 Conc: N.D.



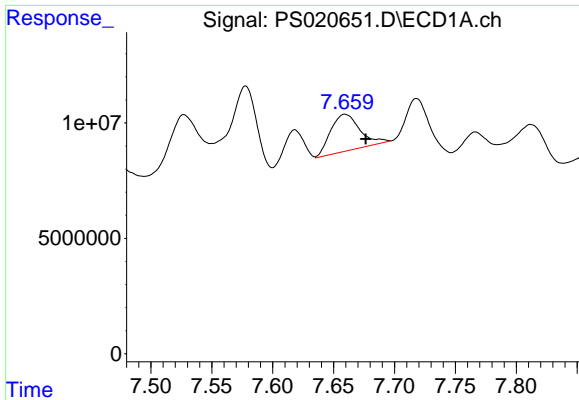
#6 MCP

R.T.: 7.528 min  
 Delta R.T.: -0.001 min  
 Response: 43575913  
 Conc: 4.18 ug/ml



#6 MCP

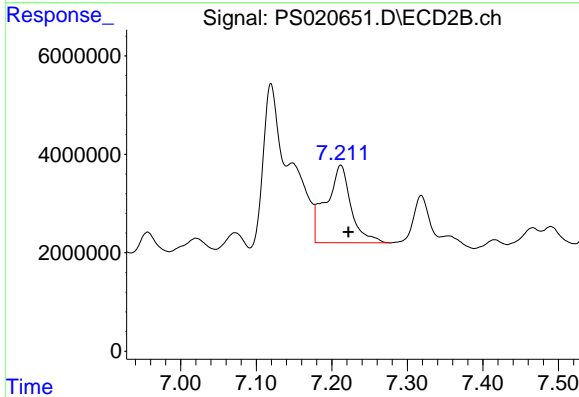
R.T.: 7.020 min  
 Delta R.T.: 0.009 min  
 Response: 4289566  
 Conc: 1.49 ug/ml



#7 MCPA

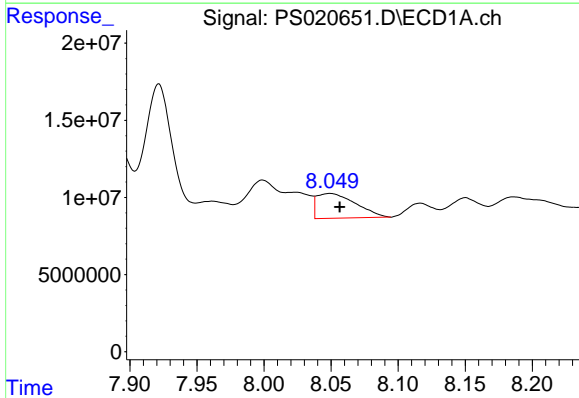
R.T.: 7.660 min  
 Delta R.T.: -0.017 min  
 Response: 26685496  
 Conc: 1.80 ug/ml

Instrument :  
 ECD\_S  
 ClientSampleId :  
 SP-1



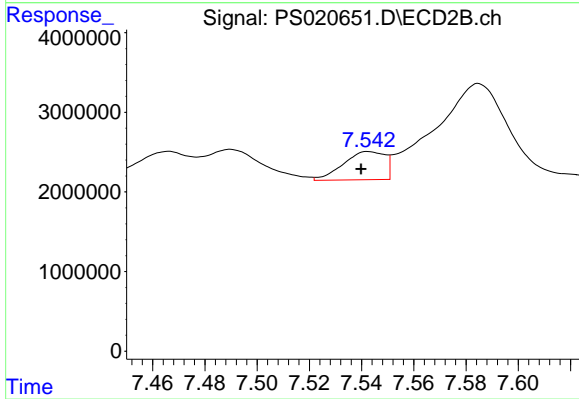
#7 MCPA

R.T.: 7.212 min  
 Delta R.T.: -0.010 min  
 Response: 36045759  
 Conc: 8.35 ug/ml



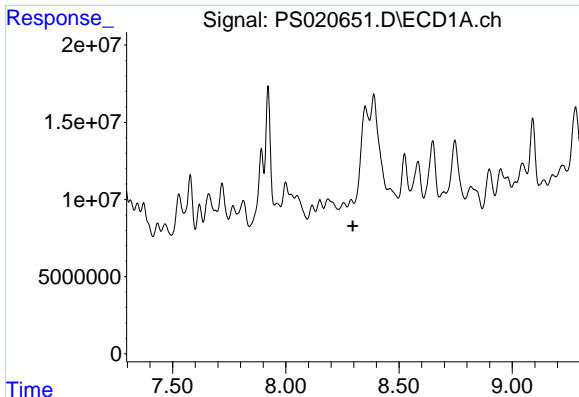
#8 DICHLORPROP

R.T.: 8.049 min  
 Delta R.T.: -0.007 min  
 Response: 32133857  
 Conc: 8.91 ng/ml



#8 DICHLORPROP

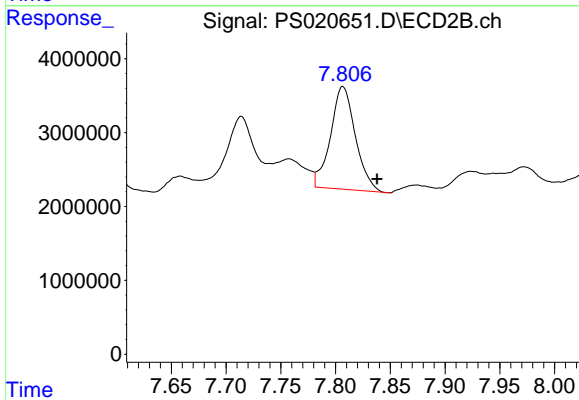
R.T.: 7.543 min  
 Delta R.T.: 0.003 min  
 Response: 3915934  
 Conc: 3.88 ng/ml



#9 2,4-D

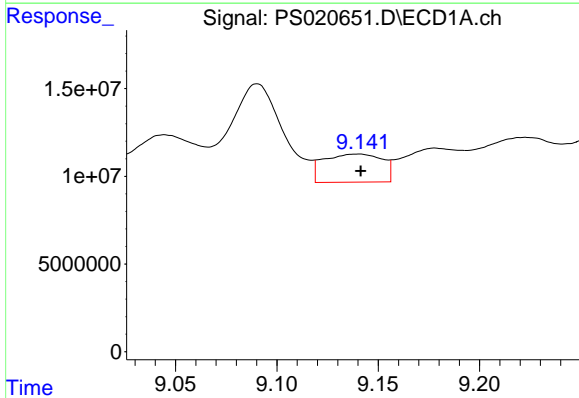
R.T.: 8.289 min  
 Delta R.T.: -0.008 min  
 Response: -186143  
 Conc: N.D.

Instrument :  
 ECD\_S  
 ClientSampleId :  
 SP-1



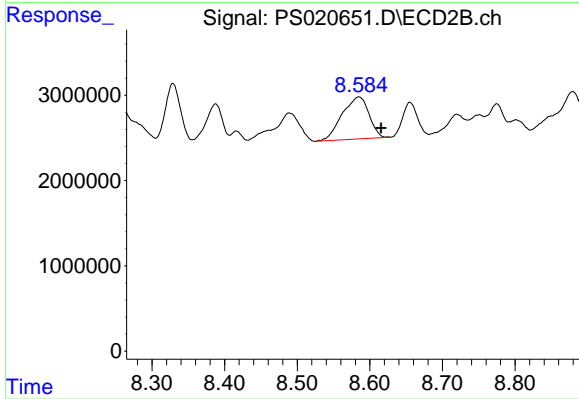
#9 2,4-D

R.T.: 7.807 min  
 Delta R.T.: -0.031 min  
 Response: 22009686  
 Conc: 17.33 ng/ml



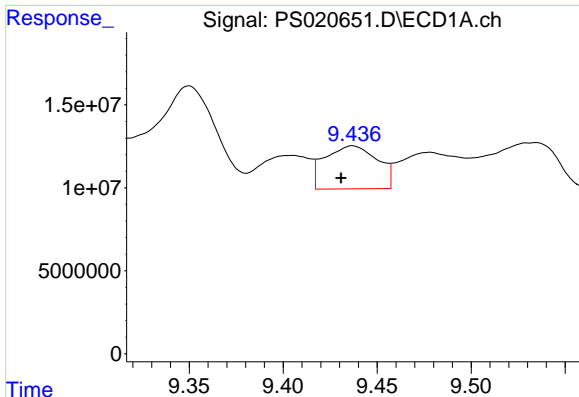
#11 2,4,5-TP (SILVEX)

R.T.: 9.140 min  
 Delta R.T.: -0.002 min  
 Response: 32249900  
 Conc: 1.58 ng/ml



#11 2,4,5-TP (SILVEX)

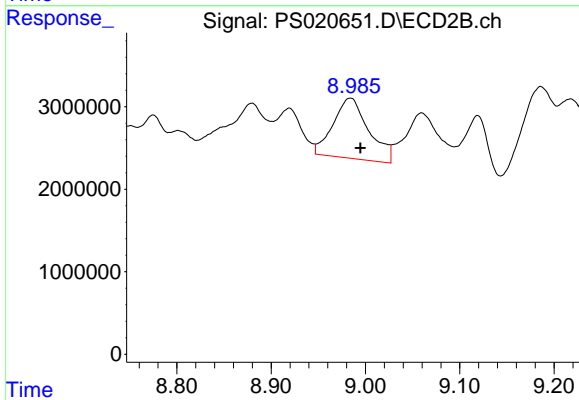
R.T.: 8.585 min  
 Delta R.T.: -0.031 min  
 Response: 12657243  
 Conc: 2.14 ng/ml



#12 2,4,5-T

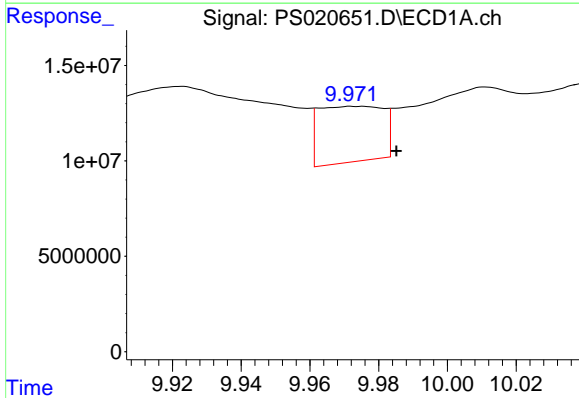
R.T.: 9.437 min  
 Delta R.T.: 0.006 min  
 Response: 50452436  
 Conc: 2.28 ng/ml

Instrument :  
 ECD\_S  
 ClientSampleId :  
 SP-1



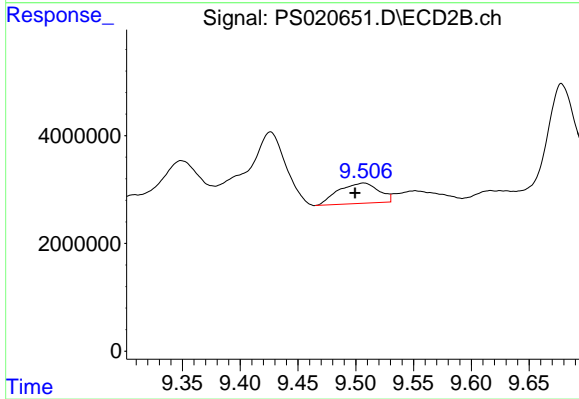
#12 2,4,5-T

R.T.: 8.984 min  
 Delta R.T.: -0.011 min  
 Response: 19217455  
 Conc: 3.53 ng/ml



#13 2,4-DB

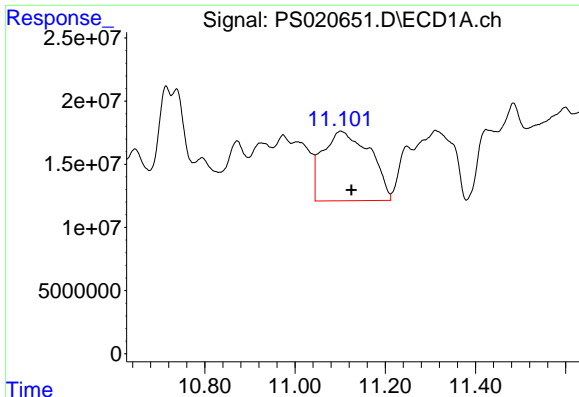
R.T.: 9.974 min  
 Delta R.T.: -0.011 min  
 Response: 37958526  
 Conc: 10.45 ng/ml



#13 2,4-DB

R.T.: 9.507 min  
 Delta R.T.: 0.007 min  
 Response: 9181212  
 Conc: 12.83 ng/ml

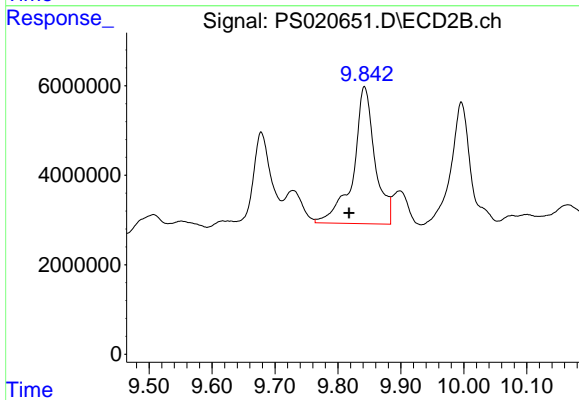




#14 DINOSEB

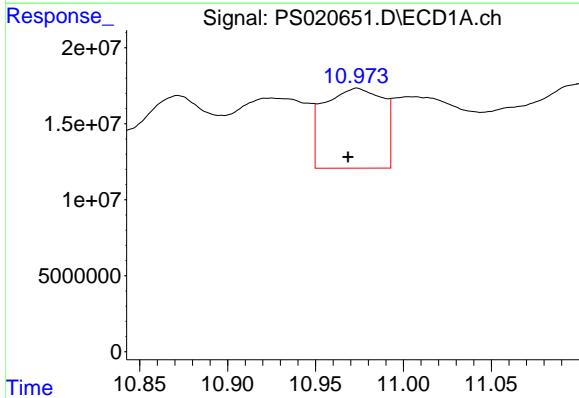
R.T.: 11.101 min  
 Delta R.T.: -0.024 min  
 Response: 399903315  
 Conc: 21.77 ng/ml

Instrument :  
 ECD\_S  
 ClientSampleId :  
 SP-1



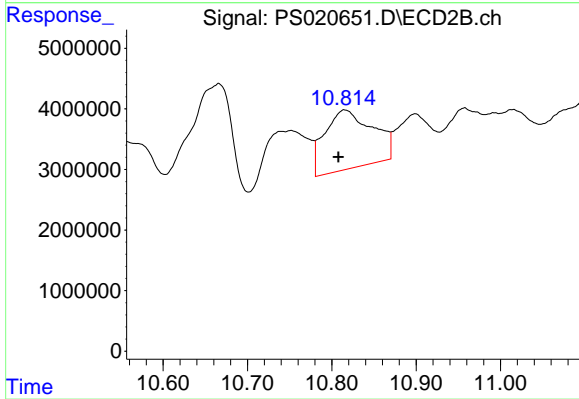
#14 DINOSEB

R.T.: 9.842 min  
 Delta R.T.: 0.024 min  
 Response: 73069434  
 Conc: 17.04 ng/ml



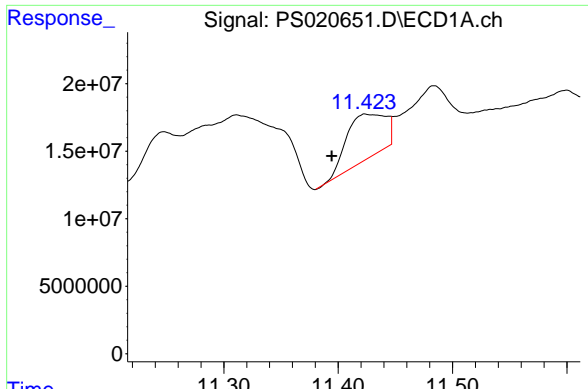
#15 Picloram

R.T.: 10.974 min  
 Delta R.T.: 0.005 min  
 Response: 123214906  
 Conc: 4.09 ng/ml



#15 Picloram

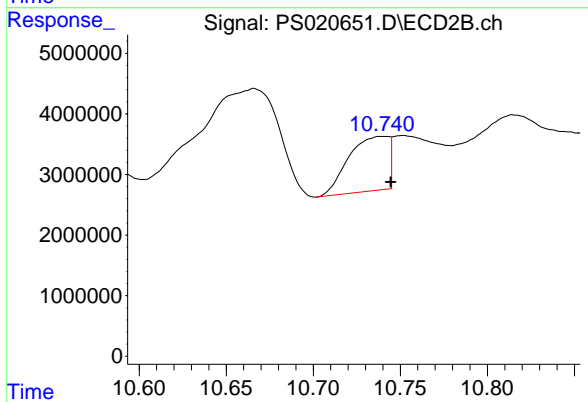
R.T.: 10.815 min  
 Delta R.T.: 0.007 min  
 Response: 38373350  
 Conc: 4.77 ng/ml



#16 DCPA

R.T.: 11.425 min  
 Delta R.T.: 0.031 min  
 Response: 78255341  
 Conc: 3.05 ng/ml

Instrument :  
 ECD\_S  
 ClientSampleId :  
 SP-1



#16 DCPA

R.T.: 10.740 min  
 Delta R.T.: -0.004 min  
 Response: 14326624  
 Conc: 1.94 ng/ml