

Data Path : Z:\pestpcbsrv\HPCHEM1\ECD\_S\Data\PS092719\  
 Data File : PS006936.D  
 Signal(s) : Signal #1: ECD1A.ch Signal #2: ECD2B.ch  
 Acq On : 27 Sep 2019 13:27  
 Operator : SM\AJ  
 Sample : HSTDCCC750  
 Misc :  
 ALS Vial : 3 Sample Multiplier: 1

Instrument :  
 ECD\_S  
 ClientSampleId :  
 HSTDCCC750

Integration File signal 1: autoint1.e  
 Integration File signal 2: autoint2.e  
 Quant Time: Sep 28 01:10:51 2019  
 Quant Method : Z:\pestpcbsrv\HPCHEM1\ECD\_S\Method\PS092019.M  
 Quant Title : 8080.M  
 QLast Update : Fri Sep 20 11:14:00 2019  
 Response via : Initial Calibration  
 Integrator: ChemStation

Volume Inj. : 2 µl  
 Signal #1 Phase : Rtx-CLPesticides Signal #2 Phase: Rtx-CLPesticides2  
 Signal #1 Info : 30M x 0.32mm x0.5 Signal #2 Info : 30M x 0.32mm x 0.25µm

	Compound	RT#1	RT#2	Resp#1	Resp#2	ng/ml	ng/ml
-----							
System Monitoring Compounds							
4) S	2,4-DCAA	5.478	5.210	658.5E6	322.8E6	720.591	701.923
Target Compounds							
1) T	Dalapon	2.048	1.758	648.9E6	332.1E6	607.392	623.014
2) T	3,5-DICHL...	4.845	4.513	738.0E6	384.5E6	678.469	668.830
3) T	4-Nitroph...	5.335	4.897	261.5E6	149.0E6	685.911	616.249
5) T	DICAMBA	5.630	5.337	2225.3E6	1139.1E6	688.738	676.748
6) T	MCP P	5.780	5.420	151.6E6	79415049	71.255	68.372
7) T	MCPA	5.914	5.598	215.8E6	121.6E6	69.368	66.057
8) T	DICHLORPROP	6.258	5.877	530.4E6	278.6E6	690.803	672.726
9) T	2,4-D	6.474	6.148	584.2E6	343.7E6	712.838	673.815
10) T	Pentachlo...	6.733	6.513	8417.6E6	4345.1E6	706.292	690.629
11) T	2,4,5-TP ...	7.268	6.876	3265.1E6	1660.1E6	718.648	693.046
12) T	2,4,5-T	7.542	7.271	3629.1E6	1625.4E6	713.222	751.983
13) T	2,4-DB	8.073	7.722	420.6E6	196.0E6	725.229	689.010
14) T	DINOSEB	9.159	8.031	2689.5E6	1209.1E6	708.149	701.840
15) T	Picloram	8.996	8.970	4744.1E6	2394.1E6	707.479	657.775
16) T	DCPA	9.431	8.970	4301.8E6	2394.1E6	737.182	753.449
-----							

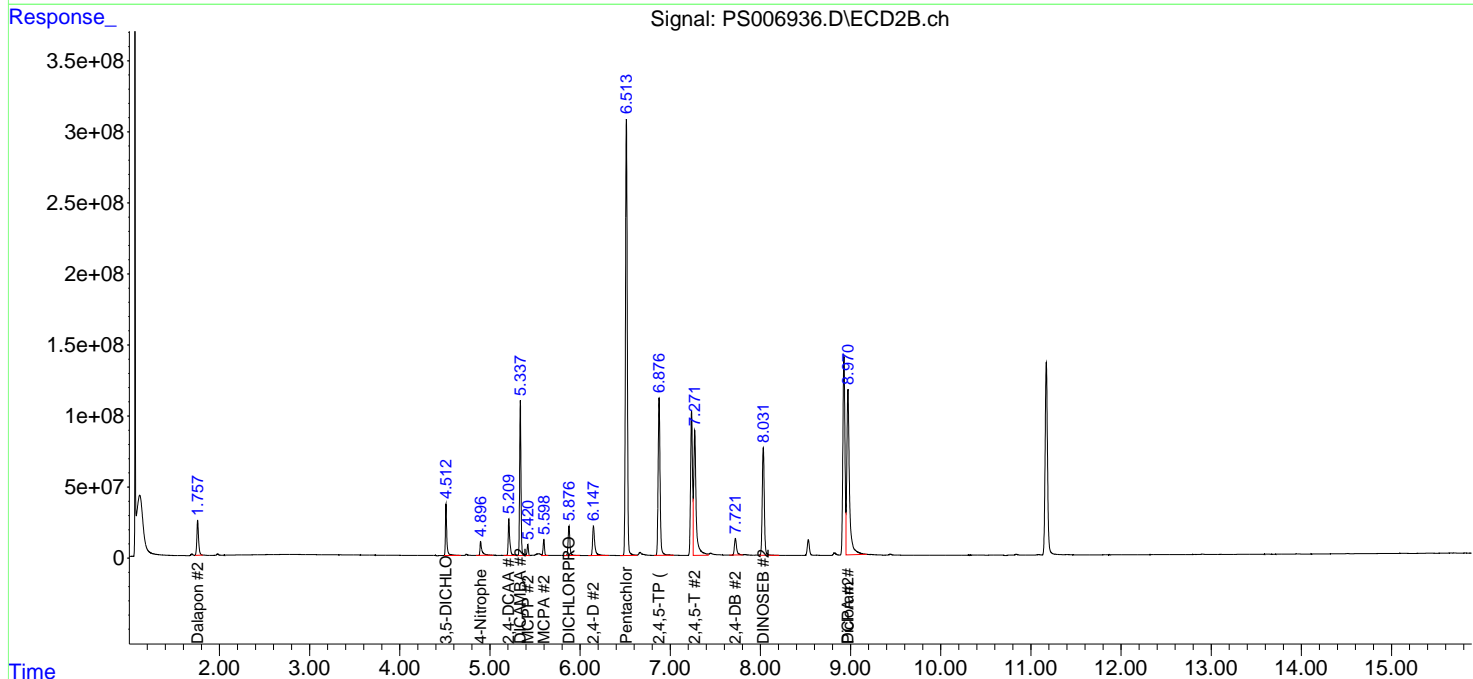
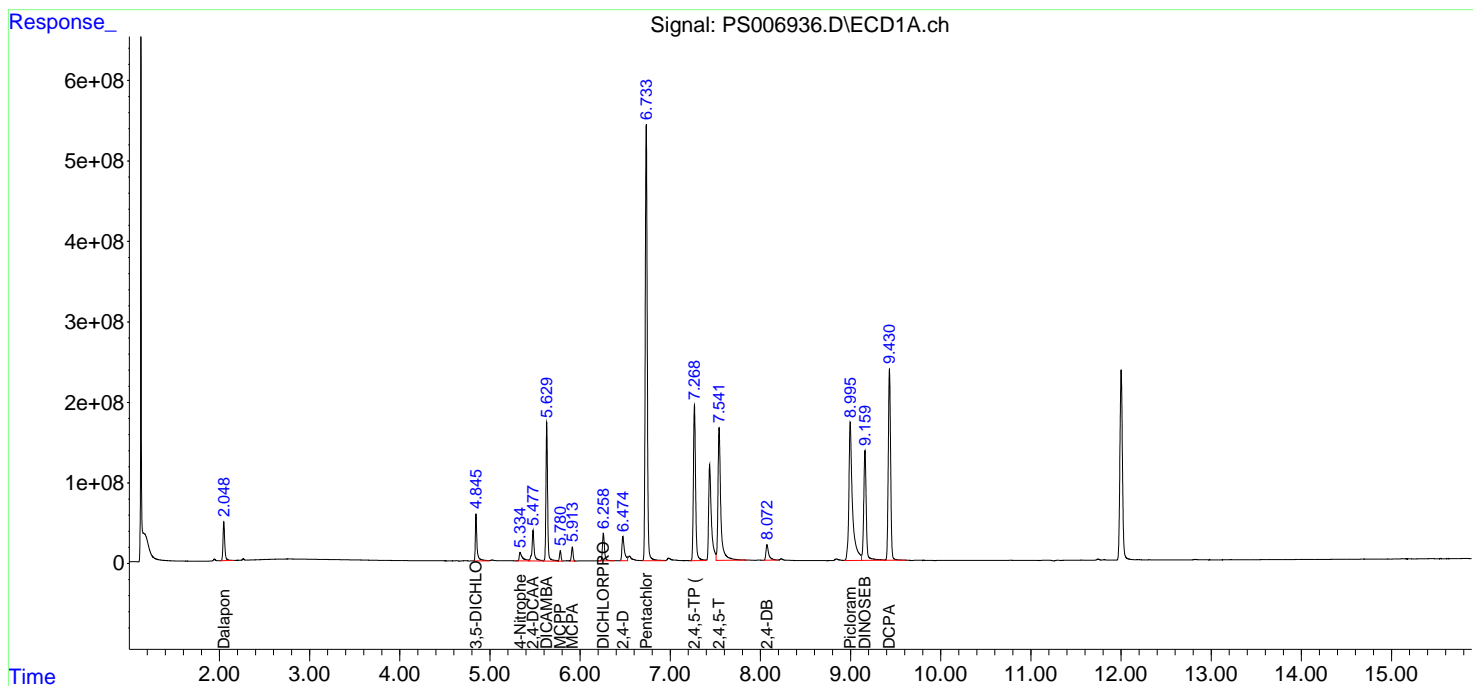
(f)=RT Delta > 1/2 Window (#)=Amounts differ by > 25% (m)=manual int.

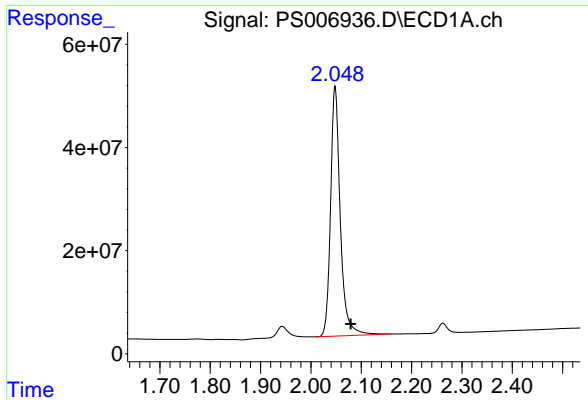
Data Path : Z:\pestpcbsrv\HPCHEM1\ECD\_S\Data\PS092719\  
 Data File : PS006936.D  
 Signal(s) : Signal #1: ECD1A.ch Signal #2: ECD2B.ch  
 Acq On : 27 Sep 2019 13:27  
 Operator : SM\AJ  
 Sample : HSTDCCC750  
 Misc :  
 ALS Vial : 3 Sample Multiplier: 1

Instrument :  
 ECD\_S  
 ClientSampled :  
 HSTDCCC750

Integration File signal 1: autoint1.e  
 Integration File signal 2: autoint2.e  
 Quant Time: Sep 28 01:10:51 2019  
 Quant Method : Z:\pestpcbsrv\HPCHEM1\ECD\_S\Method\PS092019.M  
 Quant Title : 8080.M  
 QLast Update : Fri Sep 20 11:14:00 2019  
 Response via : Initial Calibration  
 Integrator: ChemStation

Volume Inj. : 2 µl  
 Signal #1 Phase : Rtx-CLPesticides Signal #2 Phase: Rtx-CLPesticides2  
 Signal #1 Info : 30M x 0.32mm x 0.5 Signal #2 Info : 30M x 0.32mm x 0.25µm

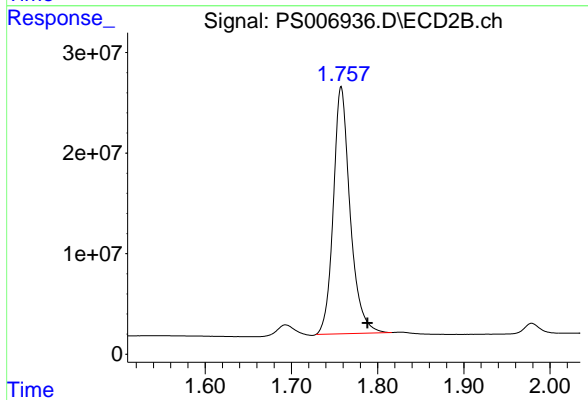




#1 Dalapon

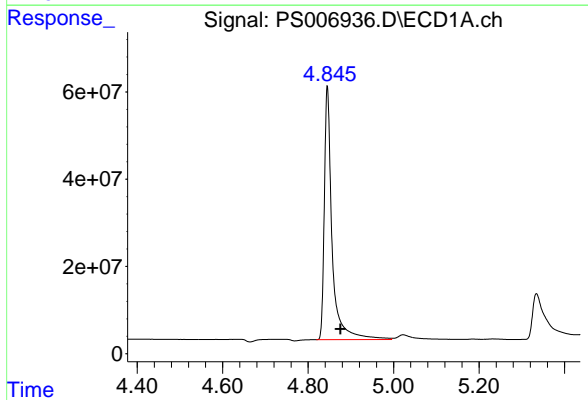
R.T.: 2.048 min  
 Delta R.T.: -0.031 min  
 Response: 648941423  
 Conc: 607.39 ng/ml

Instrument :  
 ECD\_S  
 ClientSampleId :  
 HSTDCCC750



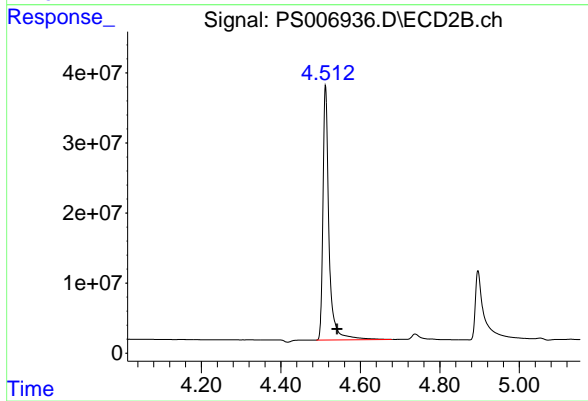
#1 Dalapon

R.T.: 1.758 min  
 Delta R.T.: -0.030 min  
 Response: 332109783  
 Conc: 623.01 ng/ml



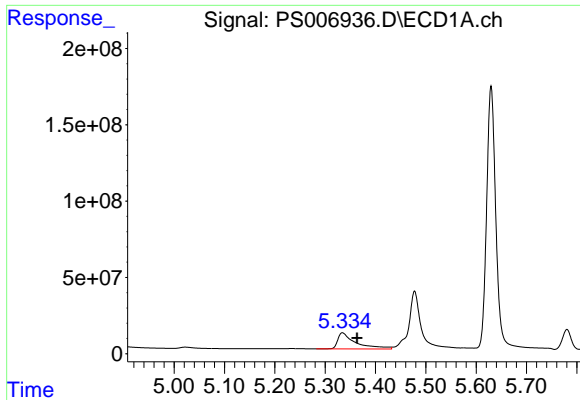
#2 3,5-DICHLOROBENZOIC ACID

R.T.: 4.845 min  
 Delta R.T.: -0.030 min  
 Response: 737980571  
 Conc: 678.47 ng/ml



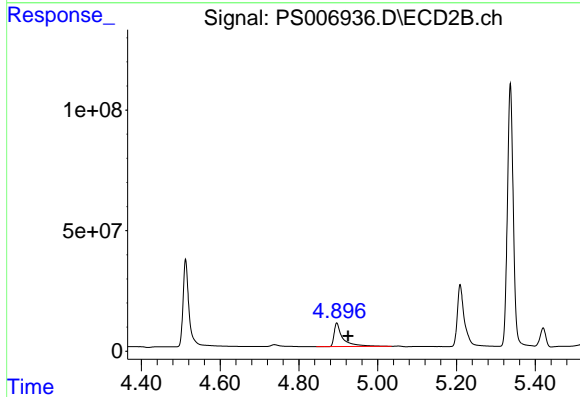
#2 3,5-DICHLOROBENZOIC ACID

R.T.: 4.513 min  
 Delta R.T.: -0.029 min  
 Response: 384484645  
 Conc: 668.83 ng/ml

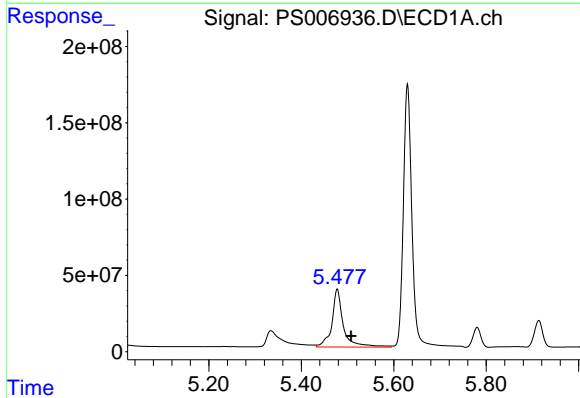


#3 4-Nitrophenol  
 R.T.: 5.335 min  
 Delta R.T.: -0.029 min  
 Response: 261536243  
 Conc: 685.91 ng/ml

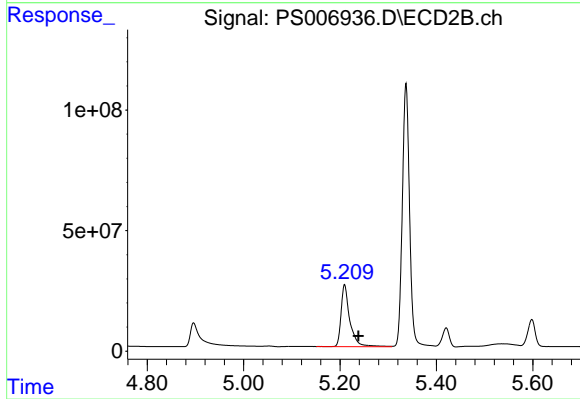
Instrument :  
 ECD\_S  
 ClientSampleId :  
 HSTDCCC750



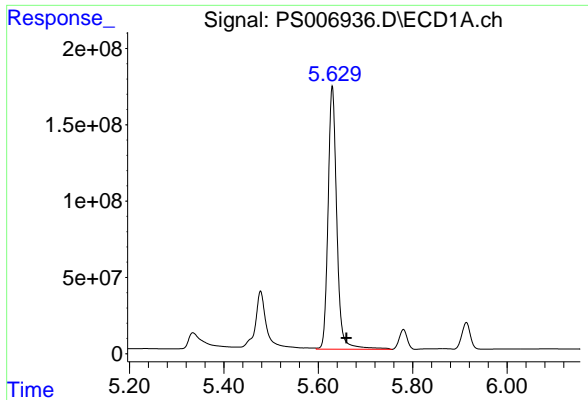
#3 4-Nitrophenol  
 R.T.: 4.897 min  
 Delta R.T.: -0.028 min  
 Response: 148966149  
 Conc: 616.25 ng/ml



#4 2,4-DCAA  
 R.T.: 5.478 min  
 Delta R.T.: -0.030 min  
 Response: 658486477  
 Conc: 720.59 ng/ml

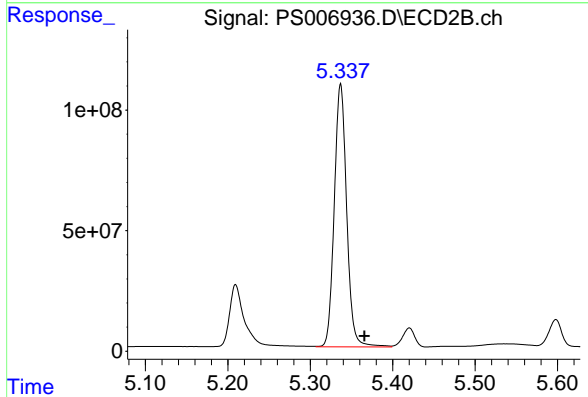


#4 2,4-DCAA  
 R.T.: 5.210 min  
 Delta R.T.: -0.028 min  
 Response: 322773505  
 Conc: 701.92 ng/ml

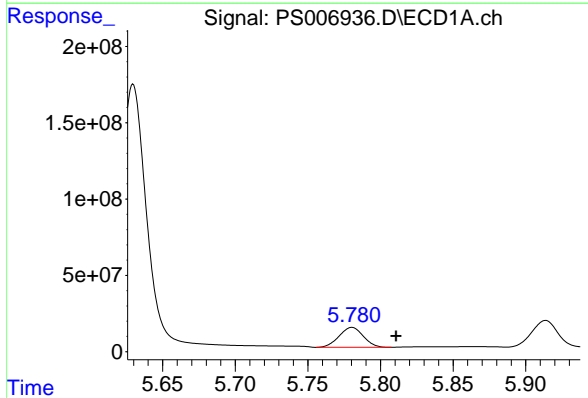


#5 DICAMBA  
 R.T.: 5.630 min  
 Delta R.T.: -0.030 min  
 Response: 2225342053  
 Conc: 688.74 ng/ml

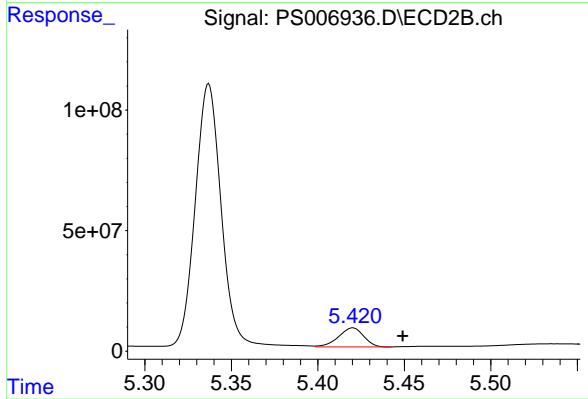
Instrument :  
 ECD\_S  
 ClientSampleId :  
 HSTDCCC750



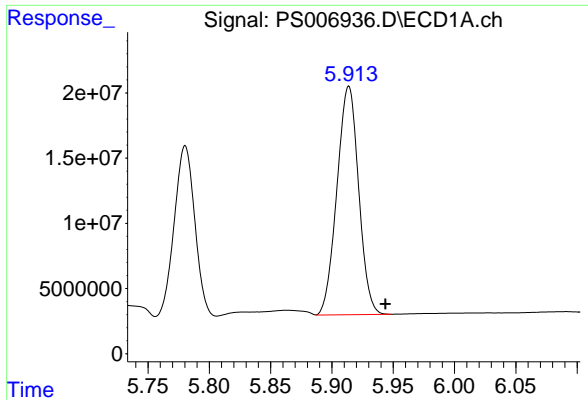
#5 DICAMBA  
 R.T.: 5.337 min  
 Delta R.T.: -0.029 min  
 Response: 1139148937  
 Conc: 676.75 ng/ml



#6 MCP  
 R.T.: 5.780 min  
 Delta R.T.: -0.030 min  
 Response: 151591747  
 Conc: 71.26 ug/ml



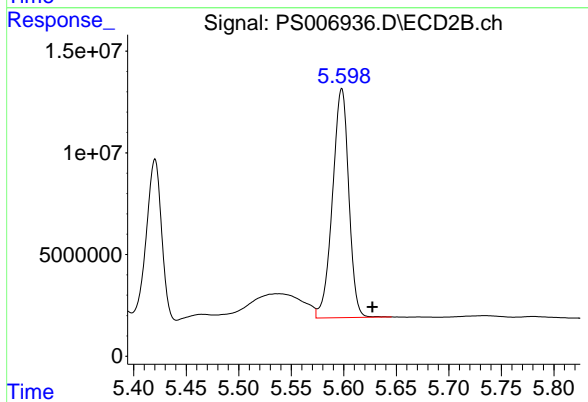
#6 MCP  
 R.T.: 5.420 min  
 Delta R.T.: -0.029 min  
 Response: 79415049  
 Conc: 68.37 ug/ml



#7 MCPA

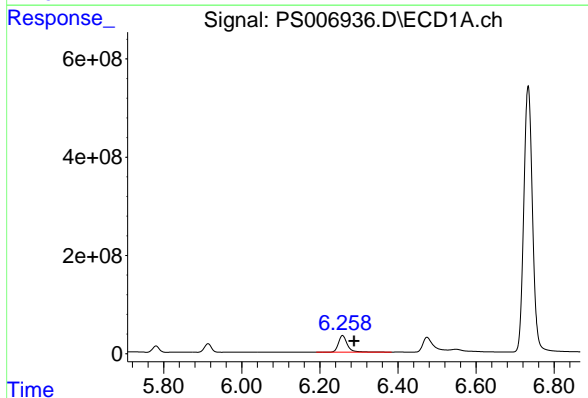
R.T.: 5.914 min  
Delta R.T.: -0.030 min  
Response: 215812163  
Conc: 69.37 ug/ml

Instrument :  
ECD\_S  
ClientSampleId :  
HSTDCCC750



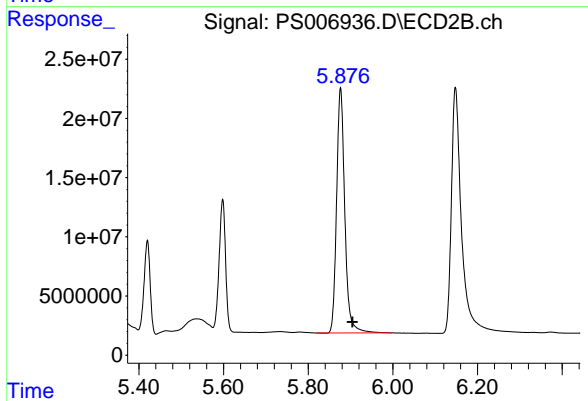
#7 MCPA

R.T.: 5.598 min  
Delta R.T.: -0.029 min  
Response: 121584758  
Conc: 66.06 ug/ml



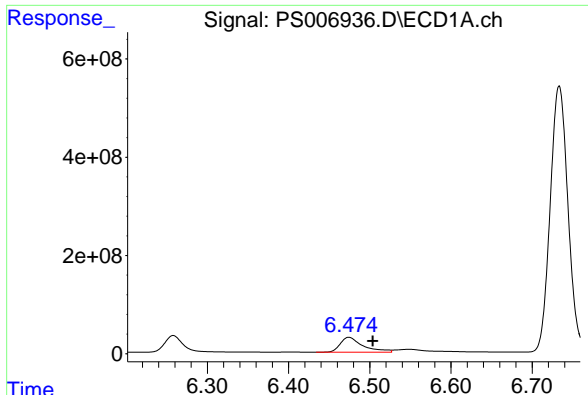
#8 DICHLORPROP

R.T.: 6.258 min  
Delta R.T.: -0.030 min  
Response: 530406787  
Conc: 690.80 ng/ml



#8 DICHLORPROP

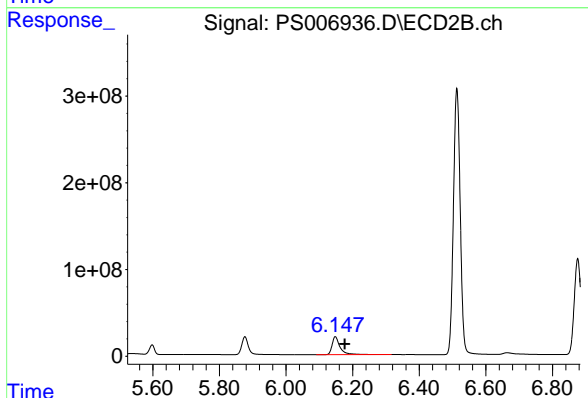
R.T.: 5.877 min  
Delta R.T.: -0.028 min  
Response: 278561897  
Conc: 672.73 ng/ml



#9 2,4-D

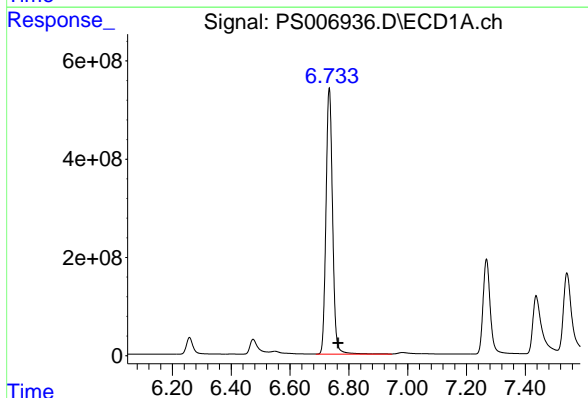
R.T.: 6.474 min  
 Delta R.T.: -0.029 min  
 Response: 584180846  
 Conc: 712.84 ng/ml

Instrument :  
 ECD\_S  
 ClientSampleId :  
 HSTDCCC750



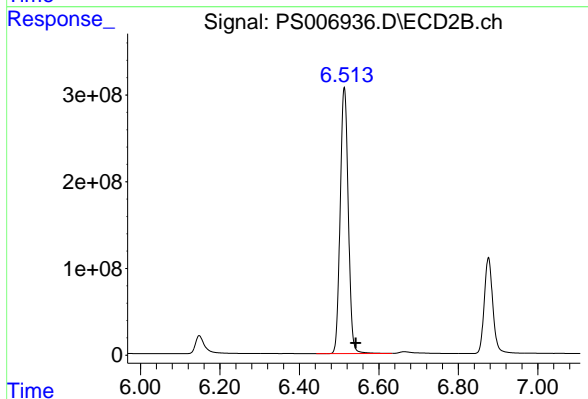
#9 2,4-D

R.T.: 6.148 min  
 Delta R.T.: -0.028 min  
 Response: 343696372  
 Conc: 673.82 ng/ml



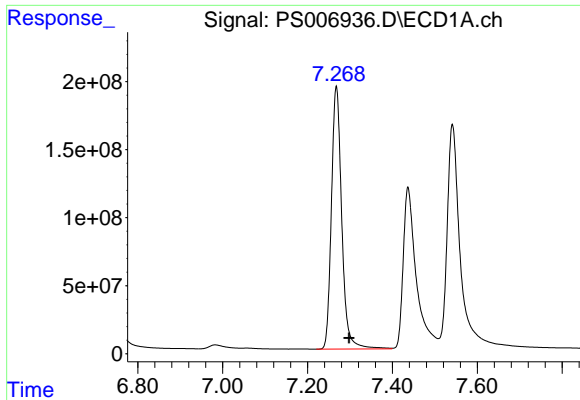
#10 Pentachlorophenol

R.T.: 6.733 min  
 Delta R.T.: -0.030 min  
 Response: 8417633207  
 Conc: 706.29 ng/ml



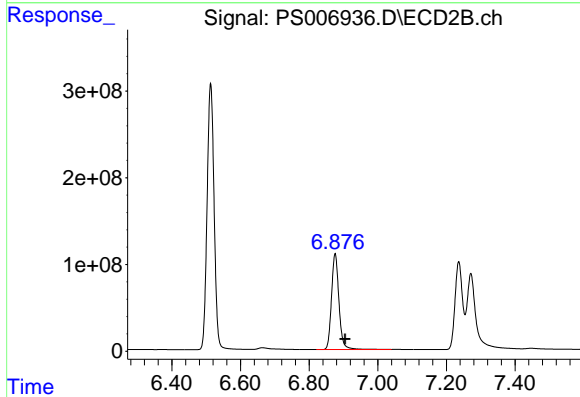
#10 Pentachlorophenol

R.T.: 6.513 min  
 Delta R.T.: -0.029 min  
 Response: 4345078259  
 Conc: 690.63 ng/ml

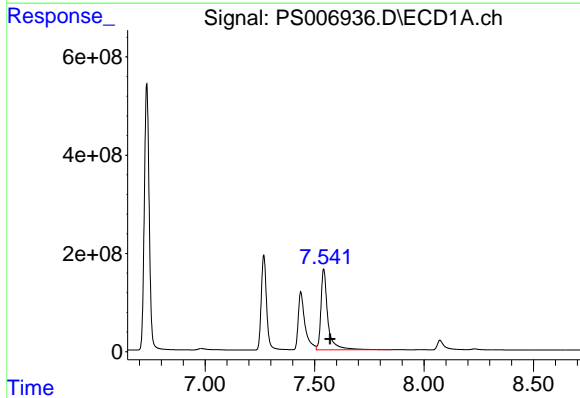


#11 2,4,5-TP (SILVEX)  
 R.T.: 7.268 min  
 Delta R.T.: -0.030 min  
 Response: 3265054479  
 Conc: 718.65 ng/ml

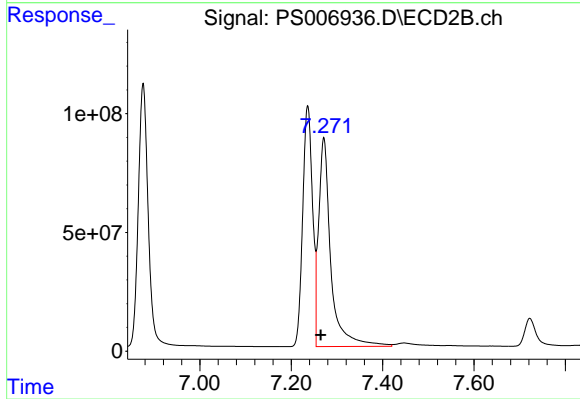
Instrument :  
 ECD\_S  
 ClientSampleId :  
 HSTDCCC750



#11 2,4,5-TP (SILVEX)  
 R.T.: 6.876 min  
 Delta R.T.: -0.029 min  
 Response: 1660080542  
 Conc: 693.05 ng/ml

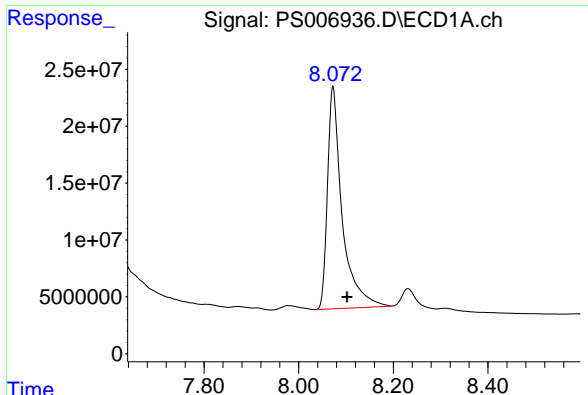


#12 2,4,5-T  
 R.T.: 7.542 min  
 Delta R.T.: -0.030 min  
 Response: 3629089360  
 Conc: 713.22 ng/ml



#12 2,4,5-T  
 R.T.: 7.271 min  
 Delta R.T.: 0.007 min  
 Response: 1625356029  
 Conc: 751.98 ng/ml

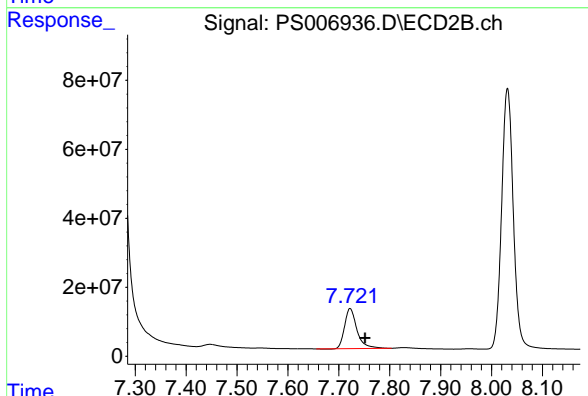




#13 2,4-DB

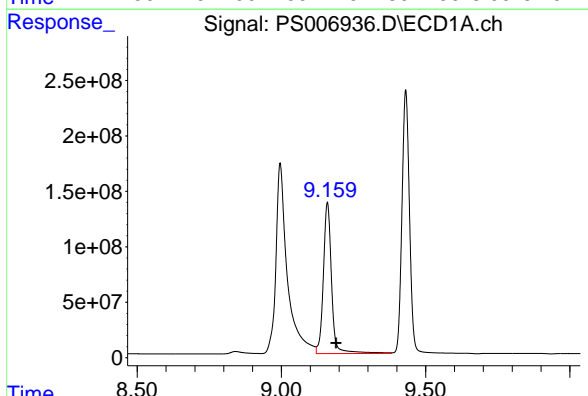
R.T.: 8.073 min  
 Delta R.T.: -0.030 min  
 Response: 420641243  
 Conc: 725.23 ng/ml

Instrument :  
 ECD\_S  
 ClientSampleId :  
 HSTDCCC750



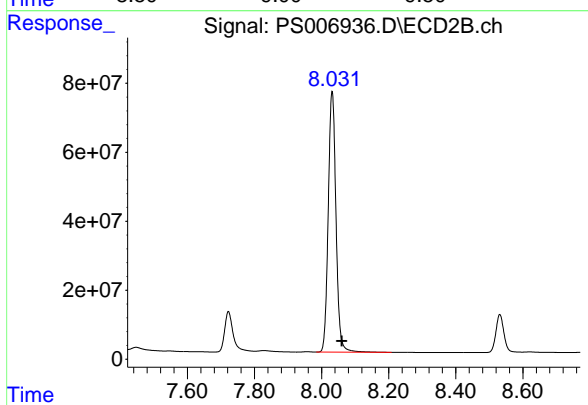
#13 2,4-DB

R.T.: 7.722 min  
 Delta R.T.: -0.029 min  
 Response: 196027275  
 Conc: 689.01 ng/ml



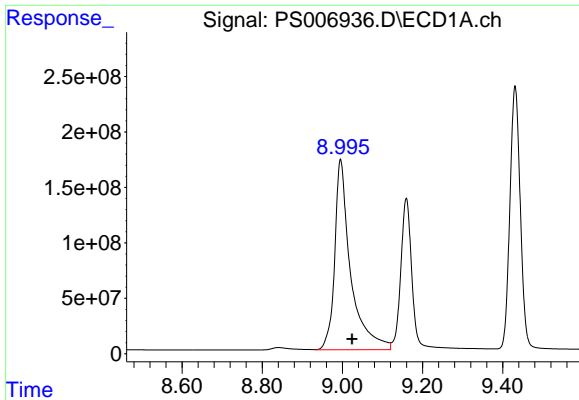
#14 DINOSEB

R.T.: 9.159 min  
 Delta R.T.: -0.030 min  
 Response: 2689494013  
 Conc: 708.15 ng/ml



#14 DINOSEB

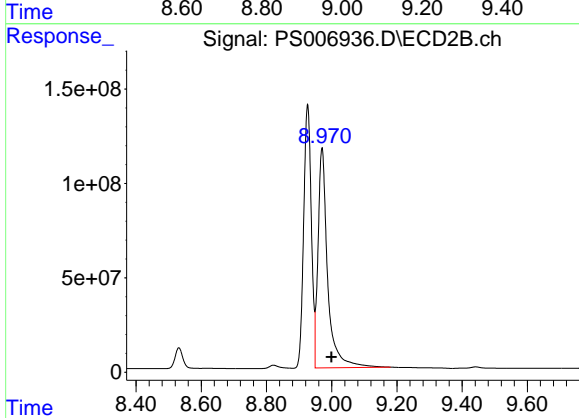
R.T.: 8.031 min  
 Delta R.T.: -0.029 min  
 Response: 1209097633  
 Conc: 701.84 ng/ml



#15 Picloram

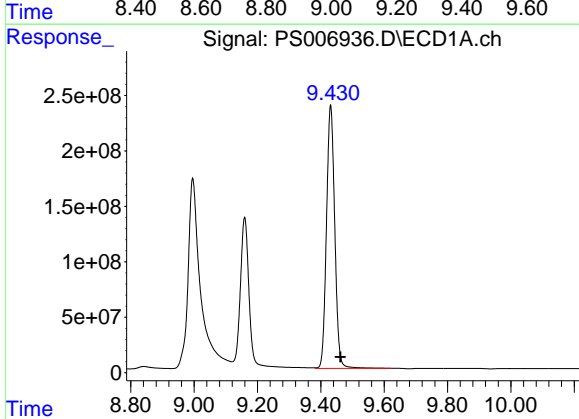
R.T.: 8.996 min  
 Delta R.T.: -0.029 min  
 Response: 4744127079  
 Conc: 707.48 ng/ml

Instrument :  
 ECD\_S  
 ClientSampleId :  
 HSTDCCC750



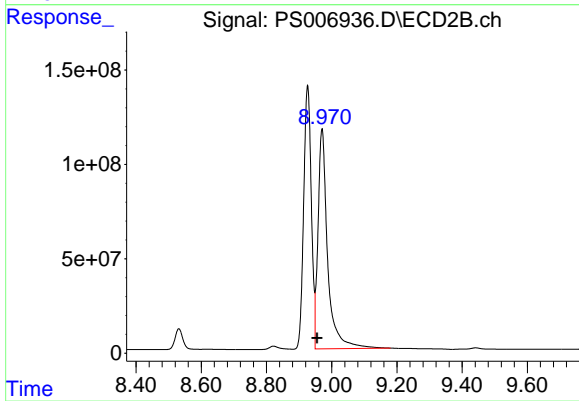
#15 Picloram

R.T.: 8.970 min  
 Delta R.T.: -0.028 min  
 Response: 2394073903  
 Conc: 657.77 ng/ml



#16 DCPA

R.T.: 9.431 min  
 Delta R.T.: -0.031 min  
 Response: 4301773053  
 Conc: 737.18 ng/ml



#16 DCPA

R.T.: 8.970 min  
 Delta R.T.: 0.015 min  
 Response: 2394073903  
 Conc: 753.45 ng/ml