

Data Path : Z:\pestpcbsrv\HPCHEM1\ECD_S\Data\PS100118\
 Data File : PS001858.D
 Signal(s) : Signal #1: ECD1A.ch Signal #2: ECD2B.ch
 Acq On : 01 Oct 2018 23:06
 Operator : EI\SJ
 Sample : J5170-30
 Misc :
 ALS Vial : 14 Sample Multiplier: 1

Instrument :
 ECD_S
 ClientSampleId :

Integration File signal 1: autoint1.e
 Integration File signal 2: autoint2.e
 Quant Time: Oct 02 04:54:56 2018
 Quant Method : Z:\pestpcbsrv\HPCHEM1\ECD_S\Method\PS091718.M
 Quant Title : 8080.M
 QLast Update : Tue Sep 18 03:01:16 2018
 Response via : Initial Calibration
 Integrator: ChemStation

Volume Inj. : 2 µl
 Signal #1 Phase : Rtx-CLPesticides Signal #2 Phase: Rtx-CLPesticides2
 Signal #1 Info : 30M x 0.32mm x0.5 Signal #2 Info : 30M x 0.32mm x 0.25µm

Compound	RT#1	RT#2	Resp#1	Resp#2	ng/ml	ng/ml

System Monitoring Compounds						
4) S 2,4-DCAA	11.457	10.952	113.8E6	111.4E6	507.541	438.550
Target Compounds						
1) T Dalapon	2.887	2.366	1448532	12344079	4.455	41.785 #
2) T 3,5-DICHL...	0.000	9.194	0	19821993	N.D.	62.801 #
6) T MCPP	12.143	0.000	21524791	0	33.778	N.D. #
15) T Picloram	16.963	0.000	2891825	0	1.661	N.D. #

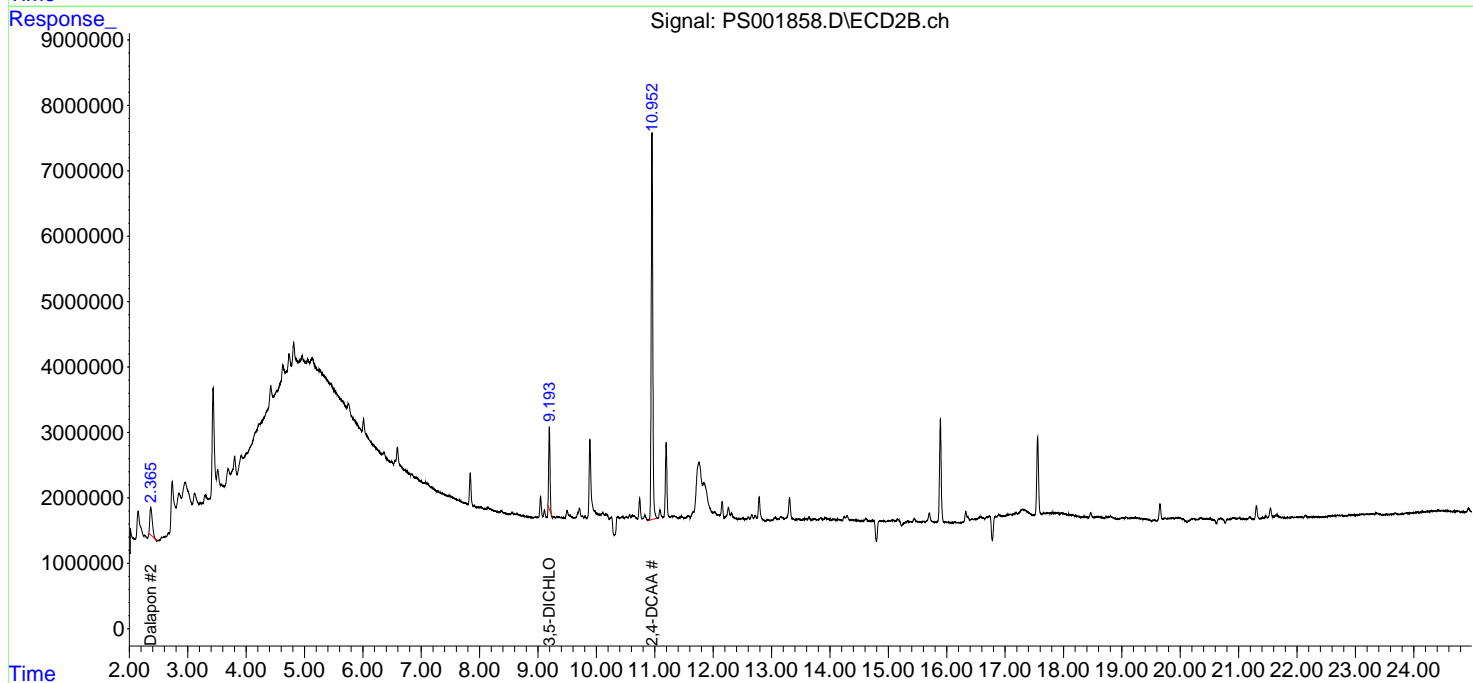
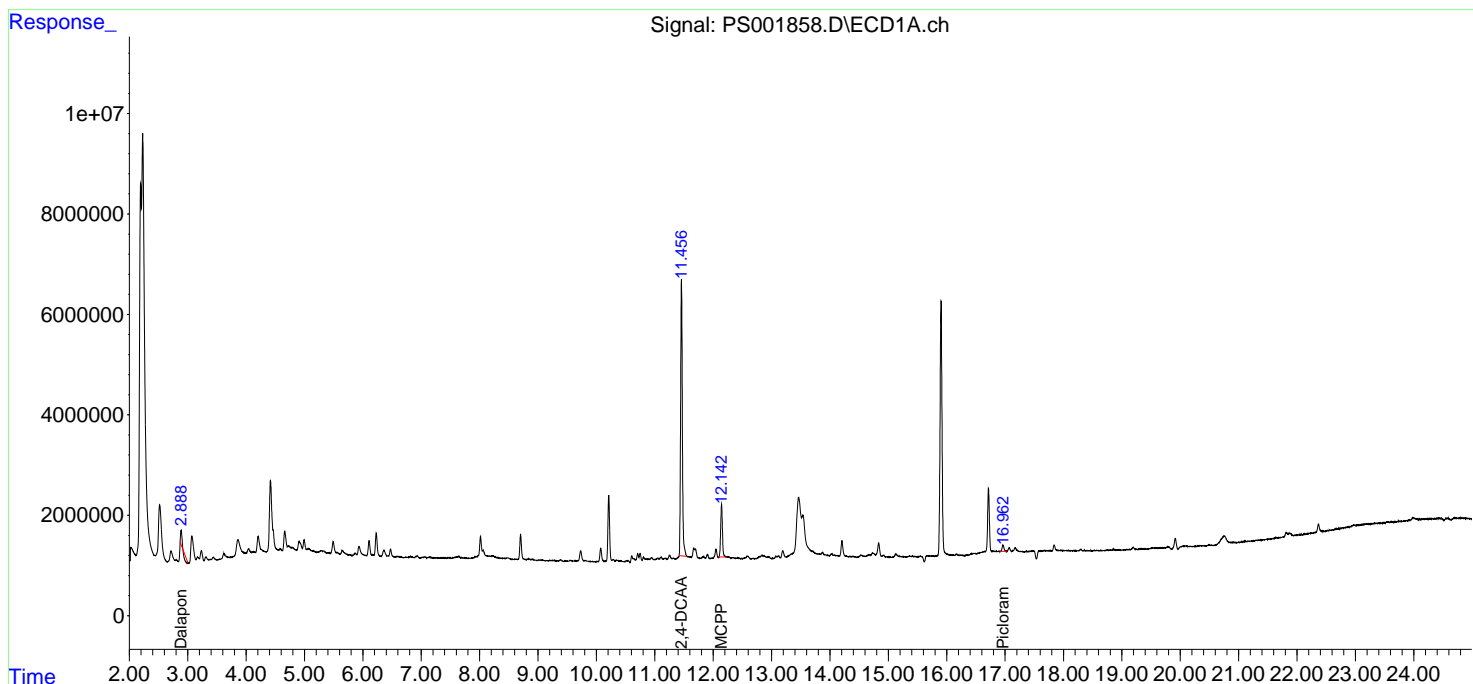
(f)=RT Delta > 1/2 Window (#)=Amounts differ by > 25% (m)=manual int.

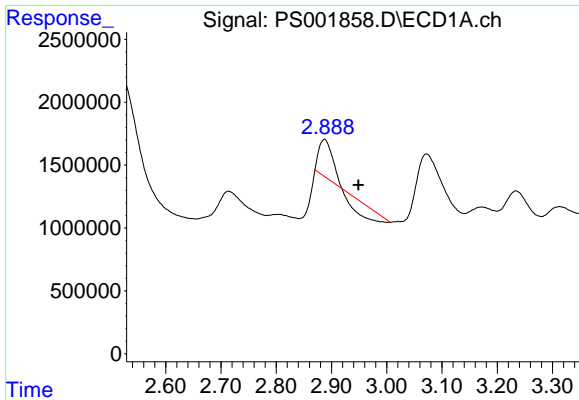
Data Path : Z:\pestpcbsrv\HPCHEM1\ECD_S\Data\PS100118\
 Data File : PS001858.D
 Signal(s) : Signal #1: ECD1A.ch Signal #2: ECD2B.ch
 Acq On : 01 Oct 2018 23:06
 Operator : EI\SJ
 Sample : J5170-30
 Misc :
 ALS Vial : 14 Sample Multiplier: 1

Instrument :
 ECD_S
 ClientSampled :

Integration File signal 1: autoint1.e
 Integration File signal 2: autoint2.e
 Quant Time: Oct 02 04:54:56 2018
 Quant Method : Z:\pestpcbsrv\HPCHEM1\ECD_S\Method\PS091718.M
 Quant Title : 8080.M
 QLast Update : Tue Sep 18 03:01:16 2018
 Response via : Initial Calibration
 Integrator: ChemStation

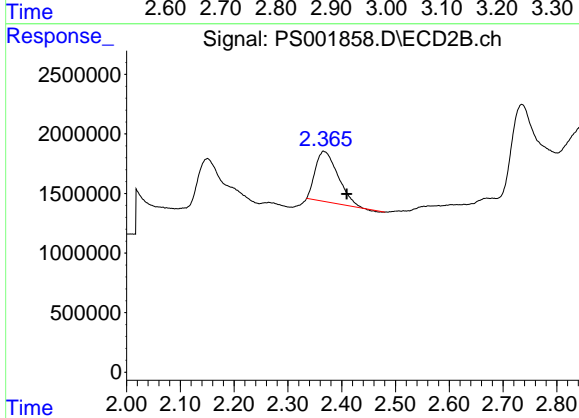
Volume Inj. : 2 µl
 Signal #1 Phase : Rtx-CLPesticides Signal #2 Phase: Rtx-CLPesticides2
 Signal #1 Info : 30M x 0.32mm x 0.5 Signal #2 Info : 30M x 0.32mm x 0.25µm



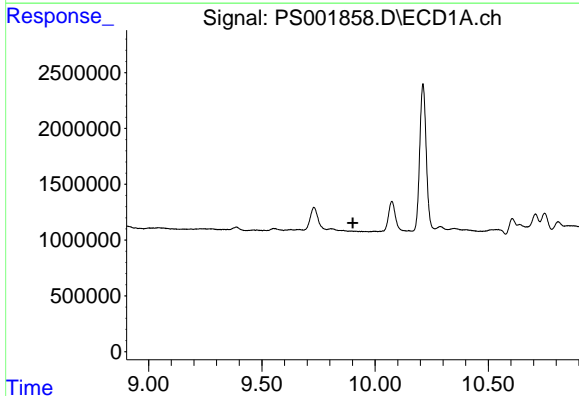


#1 Dalapon
 R.T.: 2.887 min
 Delta R.T.: -0.062 min
 Response: 1448532
 Conc: 4.45 ng/ml

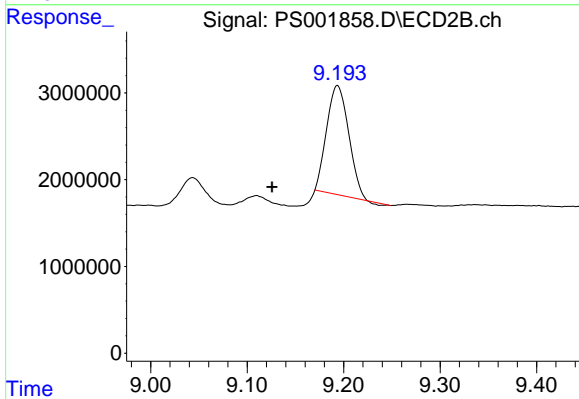
Instrument :
 ECD_S
 ClientSampled :



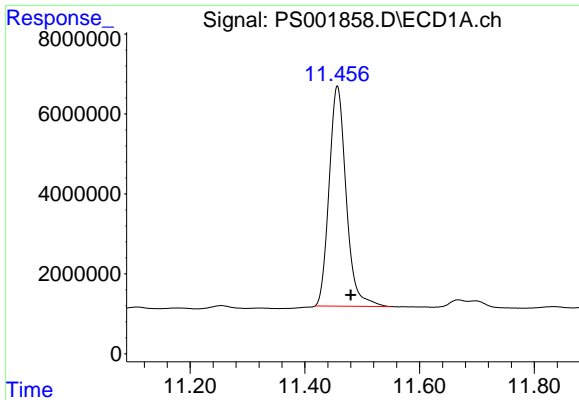
#1 Dalapon
 R.T.: 2.366 min
 Delta R.T.: -0.043 min
 Response: 12344079
 Conc: 41.79 ng/ml



#2 3,5-DICHLOROBENZOIC ACID
 R.T.: 0.000 min
 Exp R.T. : 9.902 min
 Response: 0
 Conc: N.D.

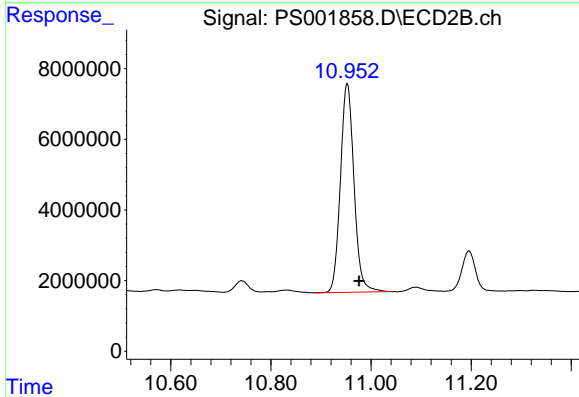


#2 3,5-DICHLOROBENZOIC ACID
 R.T.: 9.194 min
 Delta R.T.: 0.068 min
 Response: 19821993
 Conc: 62.80 ng/ml

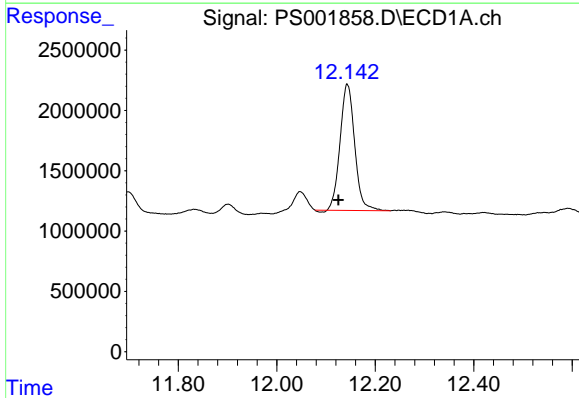


#4 2,4-DCAA
 R.T.: 11.457 min
 Delta R.T.: -0.023 min
 Response: 113849412
 Conc: 507.54 ng/ml

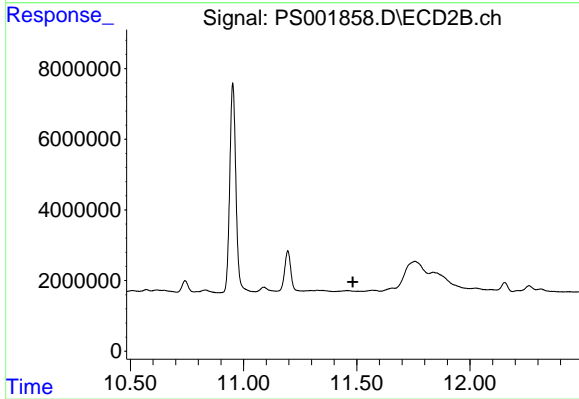
Instrument :
 ECD_S
 ClientSampled :



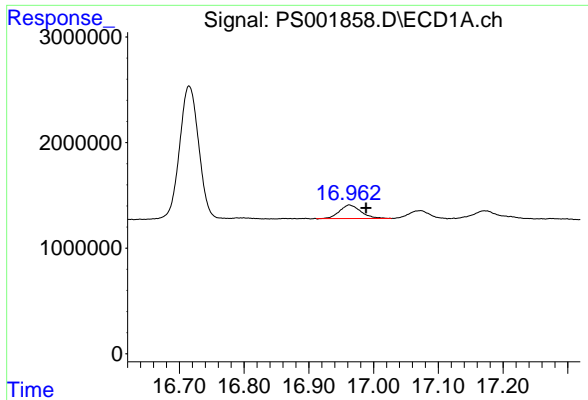
#4 2,4-DCAA
 R.T.: 10.952 min
 Delta R.T.: -0.024 min
 Response: 111399017
 Conc: 438.55 ng/ml



#6 MCP
 R.T.: 12.143 min
 Delta R.T.: 0.018 min
 Response: 21524791
 Conc: 33.78 ug/ml



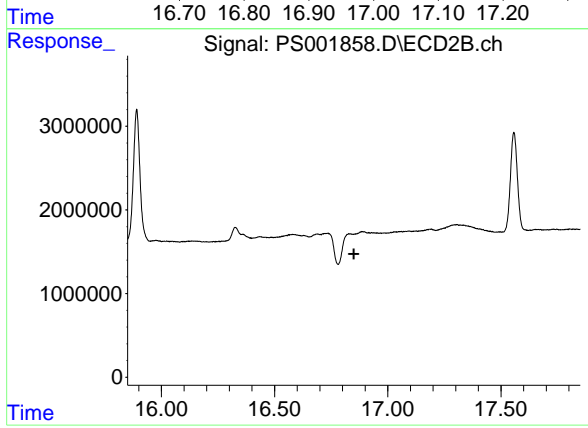
#6 MCP
 R.T.: 0.000 min
 Exp R.T. : 11.483 min
 Response: 0
 Conc: N.D.



#15 Picloram

R.T.: 16.963 min
 Delta R.T.: -0.026 min
 Response: 2891825
 Conc: 1.66 ng/ml

Instrument :
 ECD_S
 ClientSampleId :



#15 Picloram

R.T.: 0.000 min
 Exp R.T. : 16.850 min
 Response: 0
 Conc: N.D.