

Data Path : Z:\pestpcbsrv\HPCHEM1\ECD_S\Data\PS100319\
 Data File : PS007024.D
 Signal(s) : Signal #1: ECD1A.ch Signal #2: ECD2B.ch
 Acq On : 03 Oct 2019 18:06
 Operator : SM\AJ
 Sample : K5137-01
 Misc :
 ALS Vial : 21 Sample Multiplier: 1

Instrument :
 ECD_S
 ClientSampleId :

Integration File signal 1: autoint1.e
 Integration File signal 2: autoint2.e
 Quant Time: Oct 04 05:15:09 2019
 Quant Method : Z:\pestpcbsrv\HPCHEM1\ECD_S\Method\PS092019.M
 Quant Title : 8080.M
 QLast Update : Fri Sep 20 11:14:00 2019
 Response via : Initial Calibration
 Integrator: ChemStation

Volume Inj. : 2 µl
 Signal #1 Phase : Rtx-CLPesticides Signal #2 Phase: Rtx-CLPesticides2
 Signal #1 Info : 30M x 0.32mm x0.5 Signal #2 Info : 30M x 0.32mm x 0.25µm

Compound	RT#1	RT#2	Resp#1	Resp#2	ng/ml	ng/ml

System Monitoring Compounds						
4) S 2,4-DCAA	5.481	5.213	193.7E6	98587729	211.986	214.395
Target Compounds						
1) T Dalapon	2.118	1.744	77788030	53694808	72.808	100.728 #
2) T 3,5-DICHL...	4.917	4.541	14813458	17020656	13.619	29.608 #
3) T 4-Nitroph...	5.336	0.000	11397782	0	29.892	N.D. #
7) T MCPA	5.956	5.589	14188110	20752203	4.560	11.275 #
9) T 2,4-D	6.546	6.133	86040389	8819796	104.990	17.291 #
10) T Pentachlo...	6.737	6.520	23675516	17626794	1.987	2.802 #
11) T 2,4,5-TP ...	7.337	0.000	8923061	0	1.964	N.D. #
13) T 2,4-DB	8.134	0.000	43409318	0	74.842	N.D. #
14) T DINOSEB	0.000	8.061	0	11154375	N.D.	6.475
15) T Picloram	0.000	9.022	0	17016551	N.D.	4.675
16) T DCPA	9.446	9.022	28365651	17016551	4.861	5.355

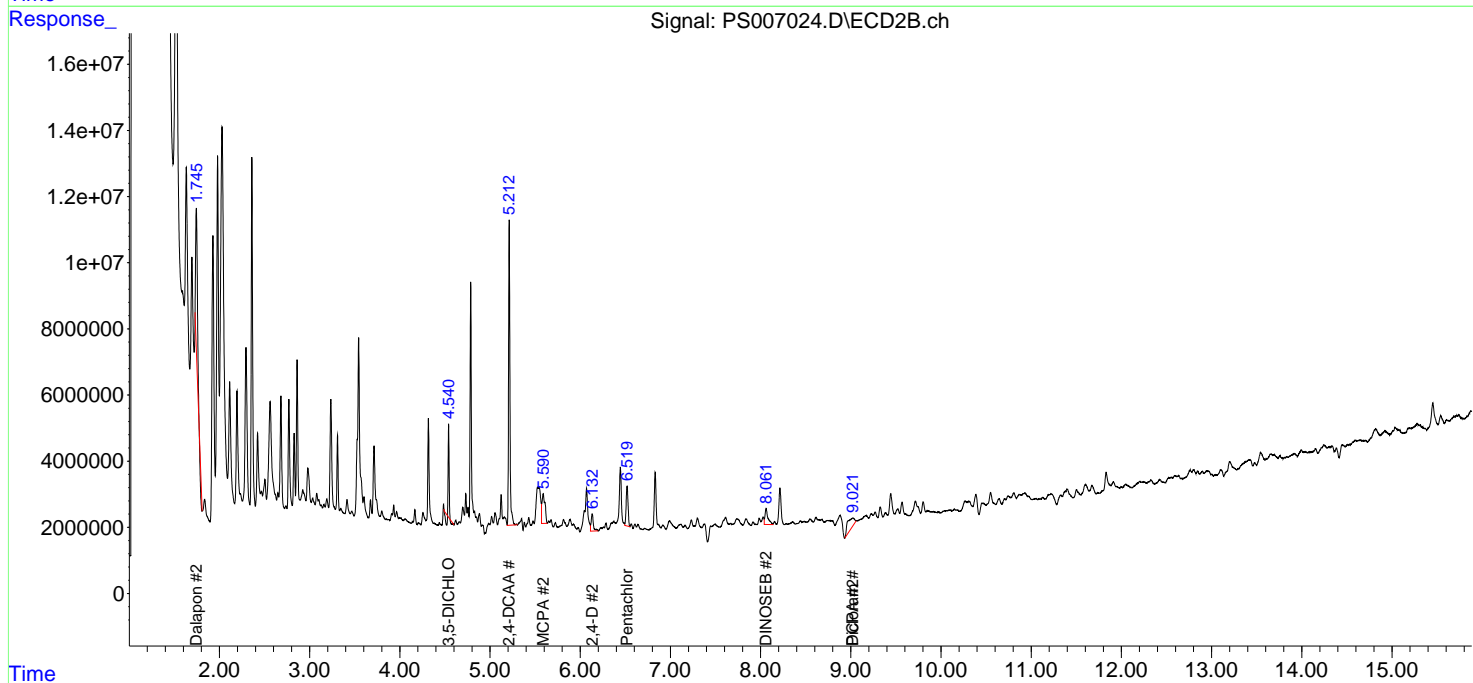
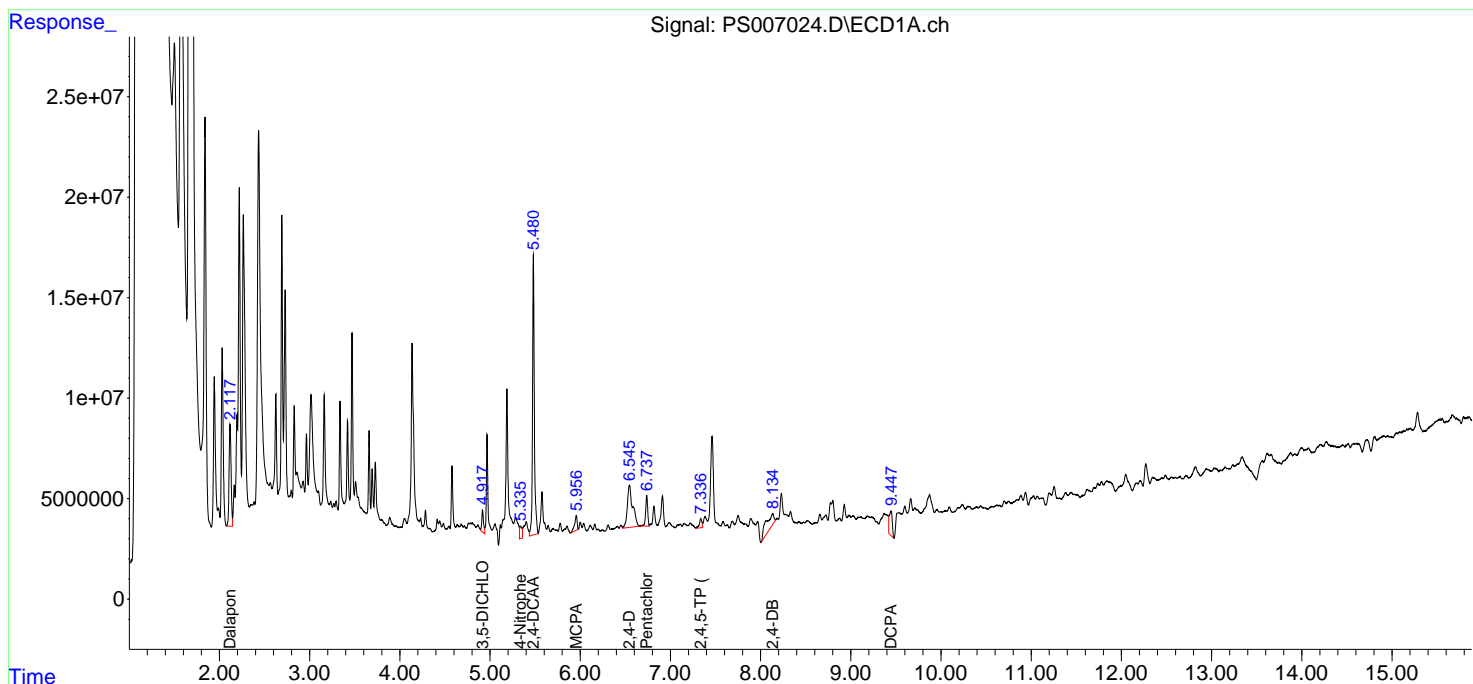
(f)=RT Delta > 1/2 Window (#)=Amounts differ by > 25% (m)=manual int.

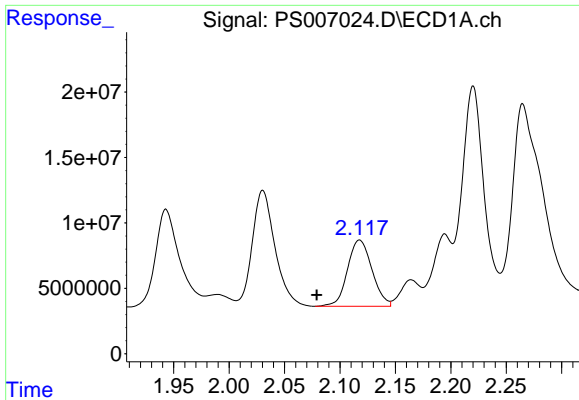
Data Path : Z:\pestpcbsrv\HPCHEM1\ECD_S\Data\PS100319\
 Data File : PS007024.D
 Signal(s) : Signal #1: ECD1A.ch Signal #2: ECD2B.ch
 Acq On : 03 Oct 2019 18:06
 Operator : SM\AJ
 Sample : K5137-01
 Misc :
 ALS Vial : 21 Sample Multiplier: 1

Instrument :
 ECD_S
 ClientSampled :

Integration File signal 1: autoint1.e
 Integration File signal 2: autoint2.e
 Quant Time: Oct 04 05:15:09 2019
 Quant Method : Z:\pestpcbsrv\HPCHEM1\ECD_S\Method\PS092019.M
 Quant Title : 8080.M
 QLast Update : Fri Sep 20 11:14:00 2019
 Response via : Initial Calibration
 Integrator: ChemStation

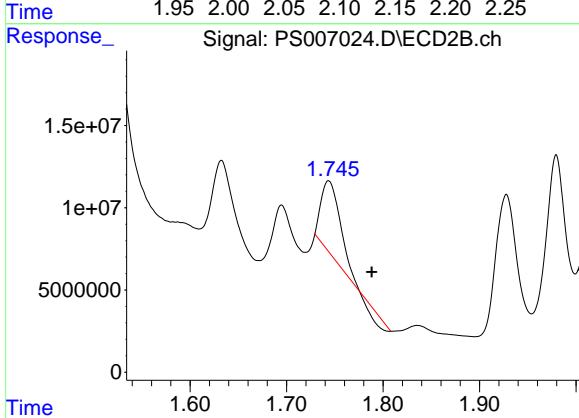
Volume Inj. : 2 µl
 Signal #1 Phase : Rtx-CLPesticides Signal #2 Phase: Rtx-CLPesticides2
 Signal #1 Info : 30M x 0.32mm x0.5 Signal #2 Info : 30M x 0.32mm x 0.25µm



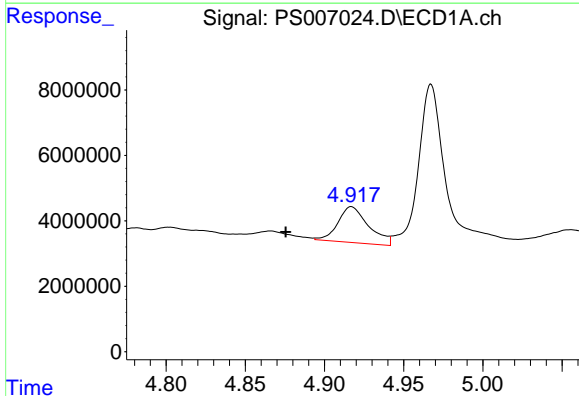


#1 Dalapon
 R.T.: 2.118 min
 Delta R.T.: 0.039 min
 Response: 77788030
 Conc: 72.81 ng/ml

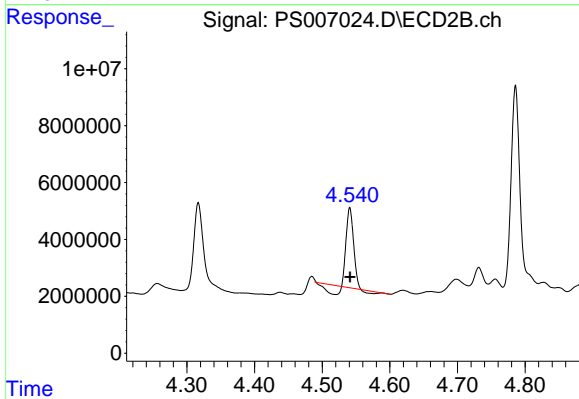
Instrument :
 ECD_S
 ClientSampled :



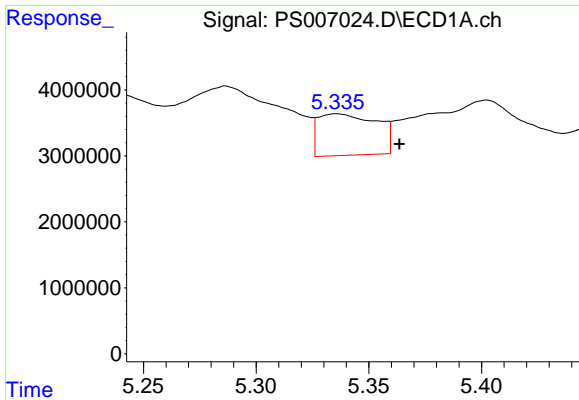
#1 Dalapon
 R.T.: 1.744 min
 Delta R.T.: -0.045 min
 Response: 53694808
 Conc: 100.73 ng/ml



#2 3,5-DICHLOROBENZOIC ACID
 R.T.: 4.917 min
 Delta R.T.: 0.042 min
 Response: 14813458
 Conc: 13.62 ng/ml



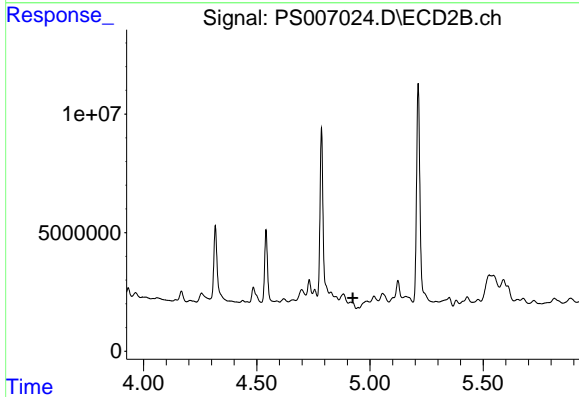
#2 3,5-DICHLOROBENZOIC ACID
 R.T.: 4.541 min
 Delta R.T.: 0.000 min
 Response: 17020656
 Conc: 29.61 ng/ml



#3 4-Nitrophenol

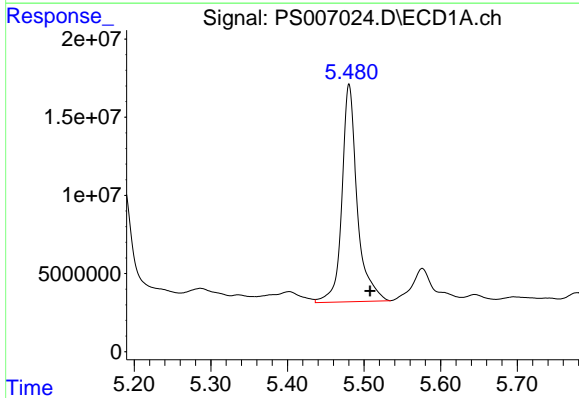
R.T.: 5.336 min
 Delta R.T.: -0.028 min
 Response: 11397782
 Conc: 29.89 ng/ml

Instrument :
 ECD_S
 ClientSampleId :



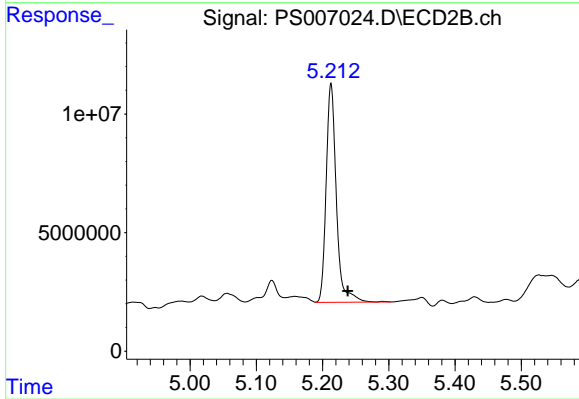
#3 4-Nitrophenol

R.T.: 0.000 min
 Exp R.T. : 4.925 min
 Response: 0
 Conc: N.D.



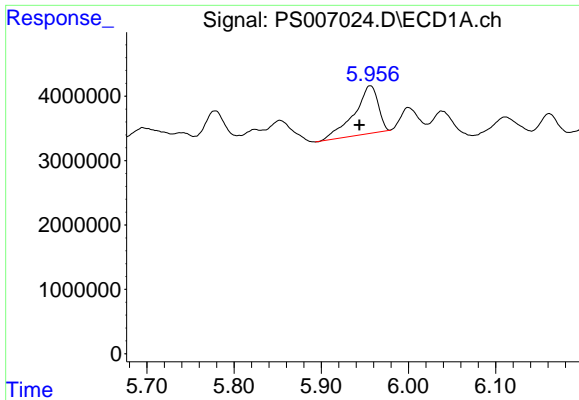
#4 2,4-DCAA

R.T.: 5.481 min
 Delta R.T.: -0.027 min
 Response: 193715721
 Conc: 211.99 ng/ml



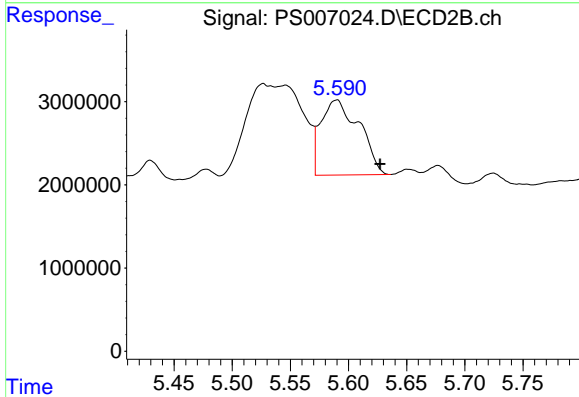
#4 2,4-DCAA

R.T.: 5.213 min
 Delta R.T.: -0.025 min
 Response: 98587729
 Conc: 214.40 ng/ml

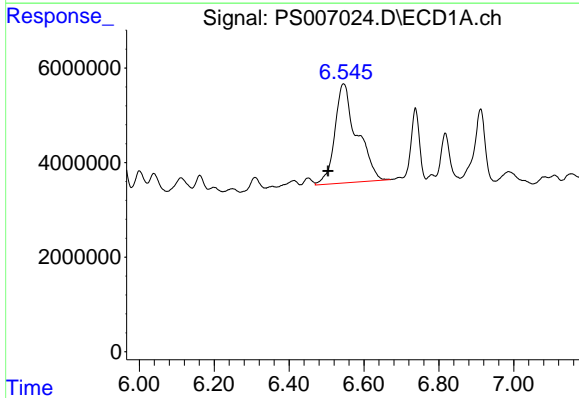


#7 MCPA
 R.T.: 5.956 min
 Delta R.T.: 0.013 min
 Response: 14188110
 Conc: 4.56 ug/ml

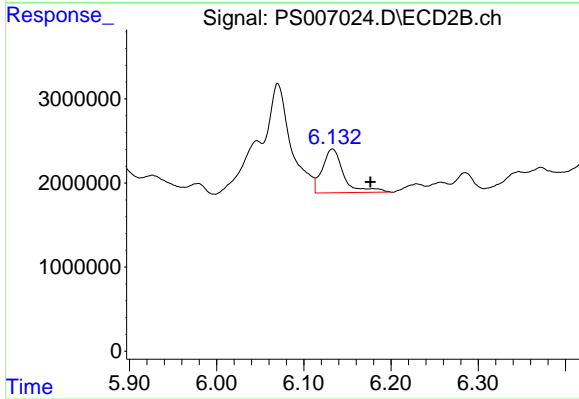
Instrument :
 ECD_S
 ClientSampleId :



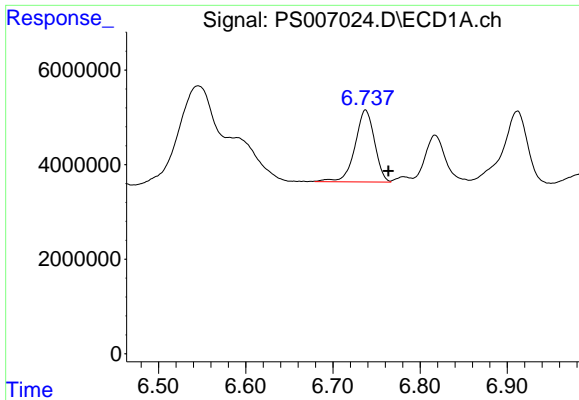
#7 MCPA
 R.T.: 5.589 min
 Delta R.T.: -0.038 min
 Response: 20752203
 Conc: 11.27 ug/ml



#9 2,4-D
 R.T.: 6.546 min
 Delta R.T.: 0.042 min
 Response: 86040389
 Conc: 104.99 ng/ml

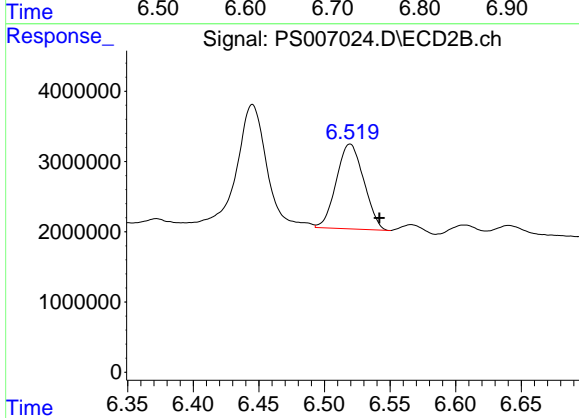


#9 2,4-D
 R.T.: 6.133 min
 Delta R.T.: -0.043 min
 Response: 8819796
 Conc: 17.29 ng/ml

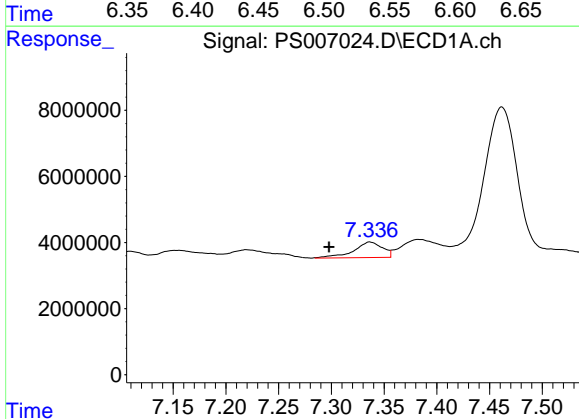


#10 Pentachlorophenol
 R.T.: 6.737 min
 Delta R.T.: -0.026 min
 Response: 23675516
 Conc: 1.99 ng/ml

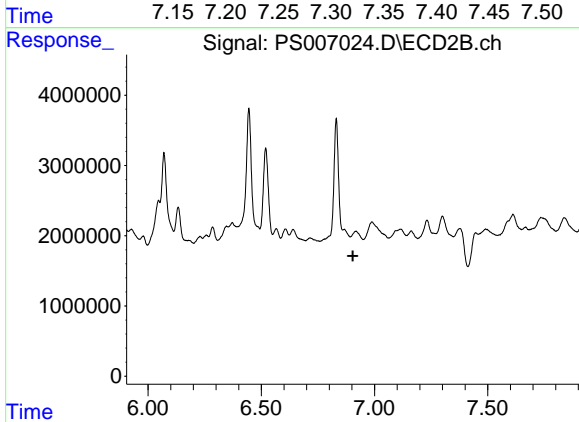
Instrument :
 ECD_S
 ClientSampleId :



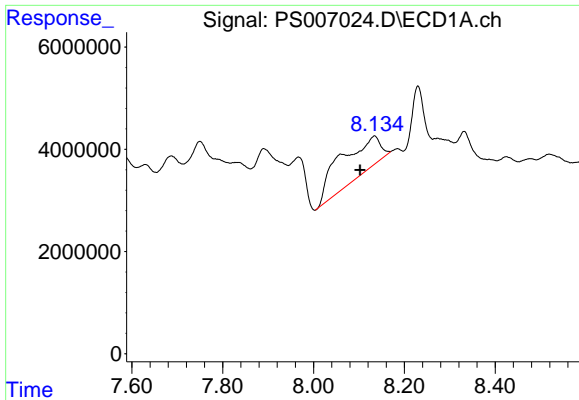
#10 Pentachlorophenol
 R.T.: 6.520 min
 Delta R.T.: -0.022 min
 Response: 17626794
 Conc: 2.80 ng/ml



#11 2,4,5-TP (SILVEX)
 R.T.: 7.337 min
 Delta R.T.: 0.039 min
 Response: 8923061
 Conc: 1.96 ng/ml

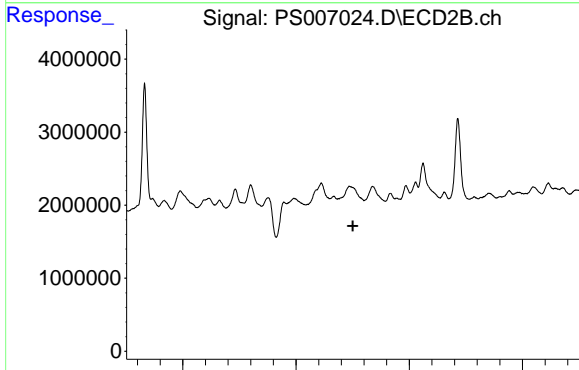


#11 2,4,5-TP (SILVEX)
 R.T.: 0.000 min
 Exp R.T. : 6.905 min
 Response: 0
 Conc: N.D.

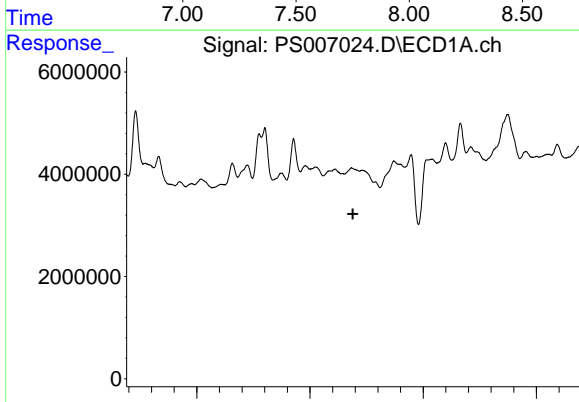


#13 2,4-DB
 R.T.: 8.134 min
 Delta R.T.: 0.032 min
 Response: 43409318
 Conc: 74.84 ng/ml

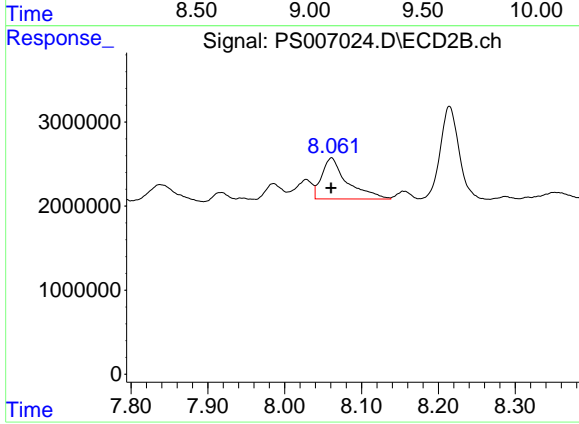
Instrument :
 ECD_S
 ClientSampled :



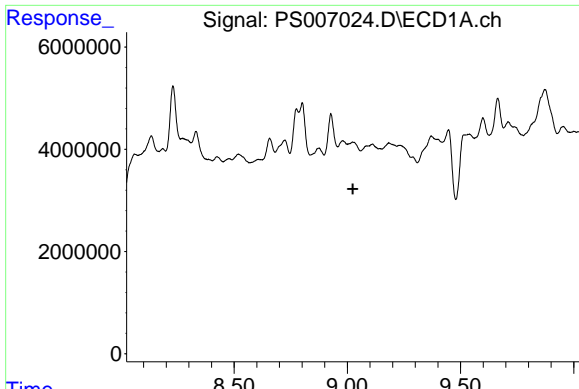
#13 2,4-DB
 R.T.: 0.000 min
 Exp R.T. : 7.751 min
 Response: 0
 Conc: N.D.



#14 DINOSEB
 R.T.: 0.000 min
 Exp R.T. : 9.190 min
 Response: 0
 Conc: N.D.



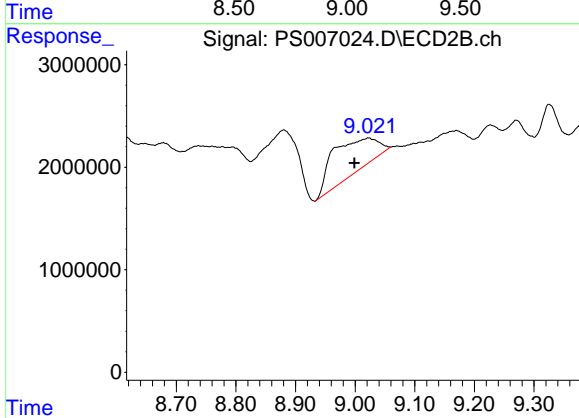
#14 DINOSEB
 R.T.: 8.061 min
 Delta R.T.: 0.000 min
 Response: 11154375
 Conc: 6.47 ng/ml



#15 Picloram

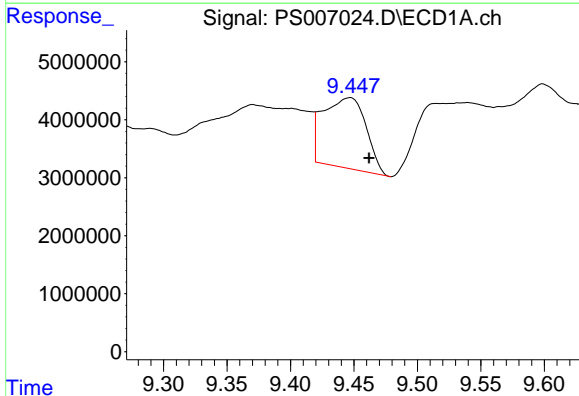
R.T.: 0.000 min
 Exp R.T.: 9.025 min
 Response: 0
 Conc: N.D.

Instrument :
 ECD_S
 ClientSampleId :



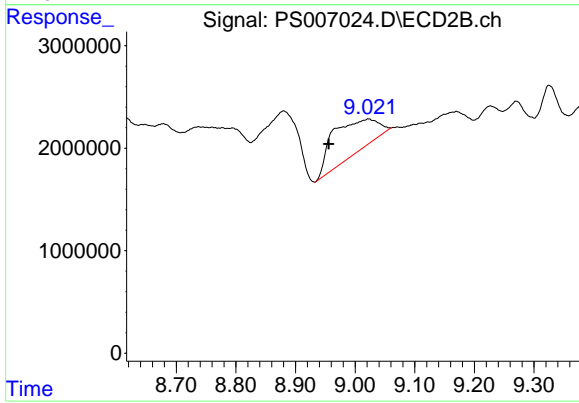
#15 Picloram

R.T.: 9.022 min
 Delta R.T.: 0.024 min
 Response: 17016551
 Conc: 4.68 ng/ml



#16 DCPA

R.T.: 9.446 min
 Delta R.T.: -0.016 min
 Response: 28365651
 Conc: 4.86 ng/ml



#16 DCPA

R.T.: 9.022 min
 Delta R.T.: 0.067 min
 Response: 17016551
 Conc: 5.36 ng/ml