

Data Path : Z:\pestpcbsrv\HPCHEM1\ECD\_S\Data\PS100322\  
 Data File : PS020720.D  
 Signal(s) : Signal #1: ECD1A.ch Signal #2: ECD2B.ch  
 Acq On : 03 Oct 2022 17:14  
 Operator : AR\AJ  
 Sample : PB148071BL  
 Misc :  
 ALS Vial : 12 Sample Multiplier: 1

Instrument :  
 ECD\_S  
 ClientSampleId :  
 PB148071BL

Integration File signal 1: autoint1.e  
 Integration File signal 2: autoint2.e  
 Quant Time: Oct 04 01:37:21 2022  
 Quant Method : Z:\pestpcbsrv\HPCHEM1\ECD\_S\Method\PS091322.M  
 Quant Title : 8080.M  
 QLast Update : Wed Sep 14 02:51:16 2022  
 Response via : Initial Calibration  
 Integrator: ChemStation

Volume Inj. : 2 µl  
 Signal #1 Phase : Rtx-CLPesticides Signal #2 Phase: Rtx-CLPesticides2  
 Signal #1 Info : 30M x 0.32mm x0.5 Signal #2 Info : 30M x 0.32mm x 0.25µm

Compound	RT#1	RT#2	Resp#1	Resp#2	ng/ml	ng/ml
-----						
System Monitoring Compounds						
4) S 2,4-DCAA	7.179	6.758	1700.1E6	533.3E6	493.992	626.167 #

Target Compounds

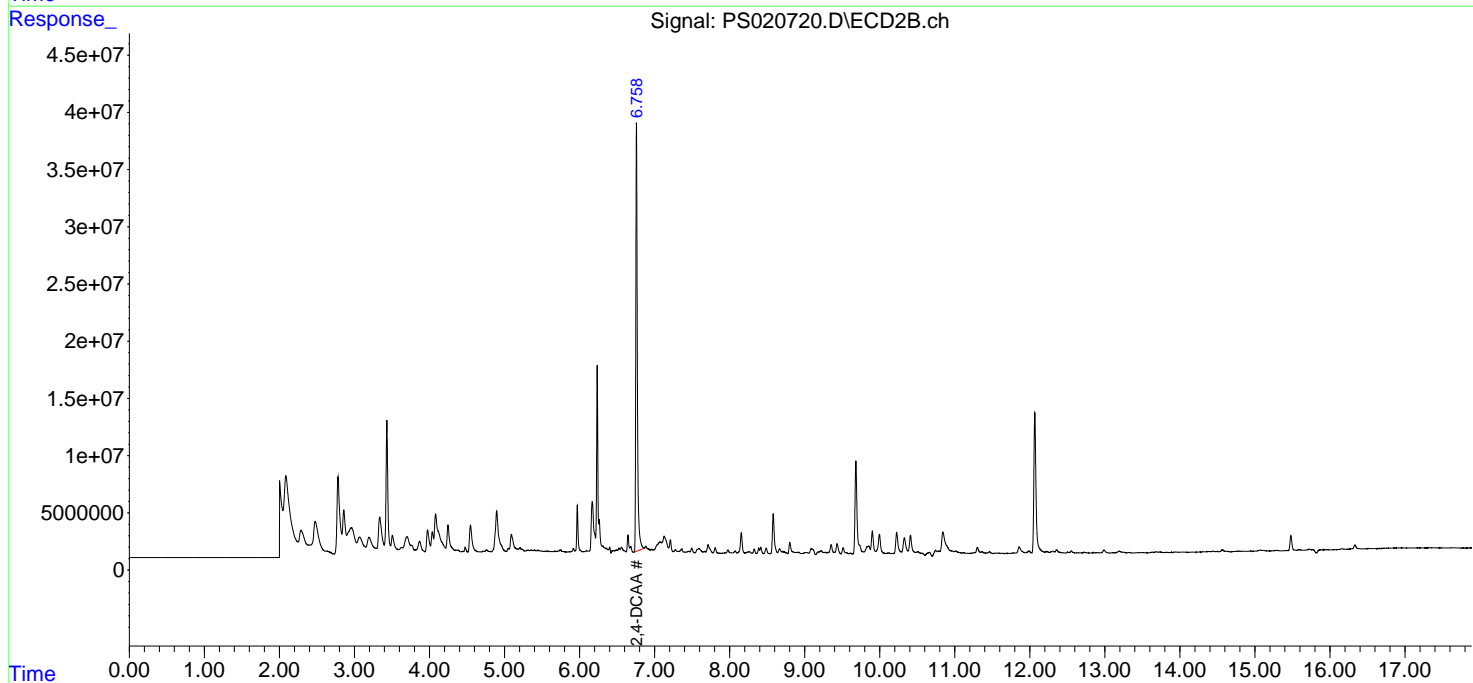
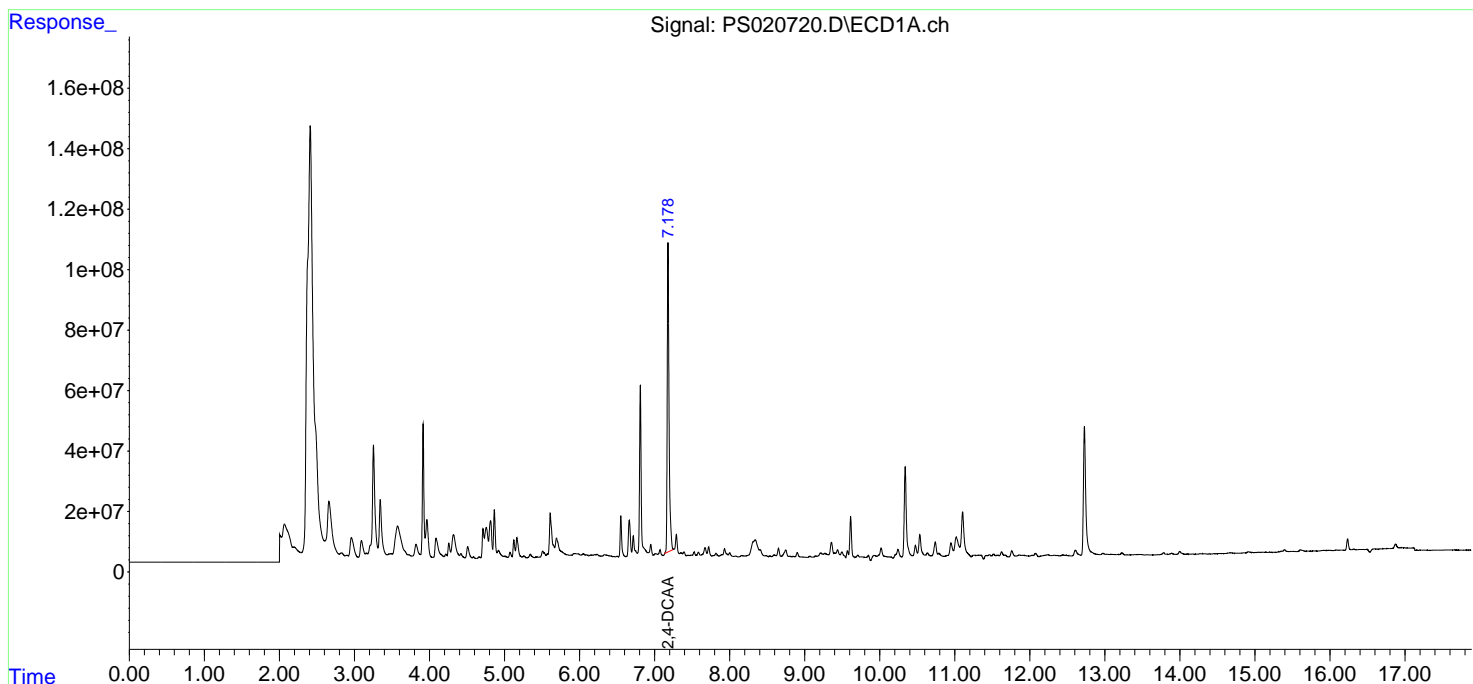
(f)=RT Delta > 1/2 Window (#)=Amounts differ by > 25% (m)=manual int.

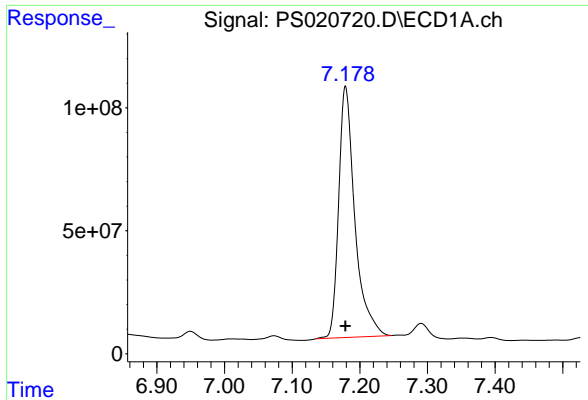
Data Path : Z:\pestpcbsrv\HPCHEM1\ECD\_S\Data\PS100322\  
 Data File : PS020720.D  
 Signal(s) : Signal #1: ECD1A.ch Signal #2: ECD2B.ch  
 Acq On : 03 Oct 2022 17:14  
 Operator : AR\AJ  
 Sample : PB148071BL  
 Misc :  
 ALS Vial : 12 Sample Multiplier: 1

Instrument :  
 ECD\_S  
 ClientSampleId :  
 PB148071BL

Integration File signal 1: autoint1.e  
 Integration File signal 2: autoint2.e  
 Quant Time: Oct 04 01:37:21 2022  
 Quant Method : Z:\pestpcbsrv\HPCHEM1\ECD\_S\Method\PS091322.M  
 Quant Title : 8080.M  
 QLast Update : Wed Sep 14 02:51:16 2022  
 Response via : Initial Calibration  
 Integrator: ChemStation

Volume Inj. : 2 µl  
 Signal #1 Phase : Rtx-CLPesticides Signal #2 Phase: Rtx-CLPesticides2  
 Signal #1 Info : 30M x 0.32mm x0.5 Signal #2 Info : 30M x 0.32mm x 0.25µm

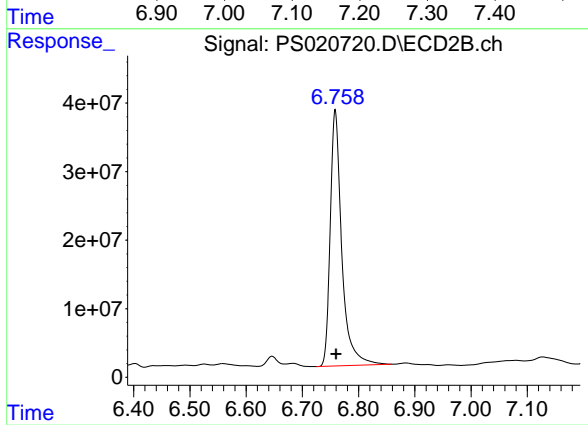




#4 2,4-DCAA

R.T.: 7.179 min  
Delta R.T.: 0.000 min  
Response: 1700065784  
Conc: 493.99 ng/ml

Instrument :  
ECD\_S  
ClientSampleId :  
PB148071BL



#4 2,4-DCAA

R.T.: 6.758 min  
Delta R.T.: -0.001 min  
Response: 533303310  
Conc: 626.17 ng/ml