

Data Path : Z:\pestpcbsrv\HPCHEM1\ECD_S\Data\PS100421\
 Data File : PS016954.D
 Signal(s) : Signal #1: ECD1A.ch Signal #2: ECD2B.ch
 Acq On : 04 Oct 2021 17:16
 Operator : DD\AJ
 Sample : M3971-10
 Misc :
 ALS Vial : 17 Sample Multiplier: 1

Instrument :
 ECD_S
 ClientSampleId :

Integration File signal 1: autoint1.e
 Integration File signal 2: autoint2.e
 Quant Time: Oct 05 01:53:47 2021
 Quant Method : Z:\pestpcbsrv\HPCHEM1\ECD_S\Method\PS092021.M
 Quant Title : 8080.M
 QLast Update : Tue Sep 21 01:52:13 2021
 Response via : Initial Calibration
 Integrator: ChemStation

Volume Inj. : 2 µl
 Signal #1 Phase : Rtx-CLPesticides Signal #2 Phase: Rtx-CLPesticides2
 Signal #1 Info : 30M x 0.32mm x0.5 Signal #2 Info : 30M x 0.32mm x 0.25µm

Compound	RT#1	RT#2	Resp#1	Resp#2	ng/ml	ng/ml

System Monitoring Compounds						
4) S 2,4-DCAA	7.158	6.748	260.9E6	111.4E6	171.224	189.959
Target Compounds						
1) T Dalapon	2.962	2.498	65271385	49624716	27.374	68.276 #
2) T 3,5-DICHL...	6.453f	5.968	118.4E6	59187871	55.630	67.134
3) T 4-Nitroph...	6.998	0.000	2915064	0	3.365	N.D. #
5) T DICAMBA	7.335	6.946	8863086	14148604	1.519	5.554 #
6) T MCPP	7.511	7.060f	11484172	5629303	2.651	2.748
7) T MCPA	7.706	7.202	12869392	21208069	2.081	6.965 #
8) T DICHLORPROP	8.060	7.547	7740491	17485892	5.243	26.963 #
9) T 2,4-D	8.223f	0.000	15607101	0	8.876	N.D. #
10) T Pentachlo...	8.573	8.242	677.0E6	339.9E6	33.502	41.301
11) T 2,4,5-TP ...	9.157	8.633	17111562	46109671	2.143	13.170 #
12) T 2,4,5-T	9.471f	0.000	86116802	0	10.434	N.D. #
13) T 2,4-DB	9.999	9.498	126.6E6	40821304	76.561	97.969 #
14) T DINOSEB	11.071f	9.819	579.0E6	145.8E6	95.028	59.535 #
16) T DCPA	11.438f	10.729	55283699	10992617	5.384	2.522 #

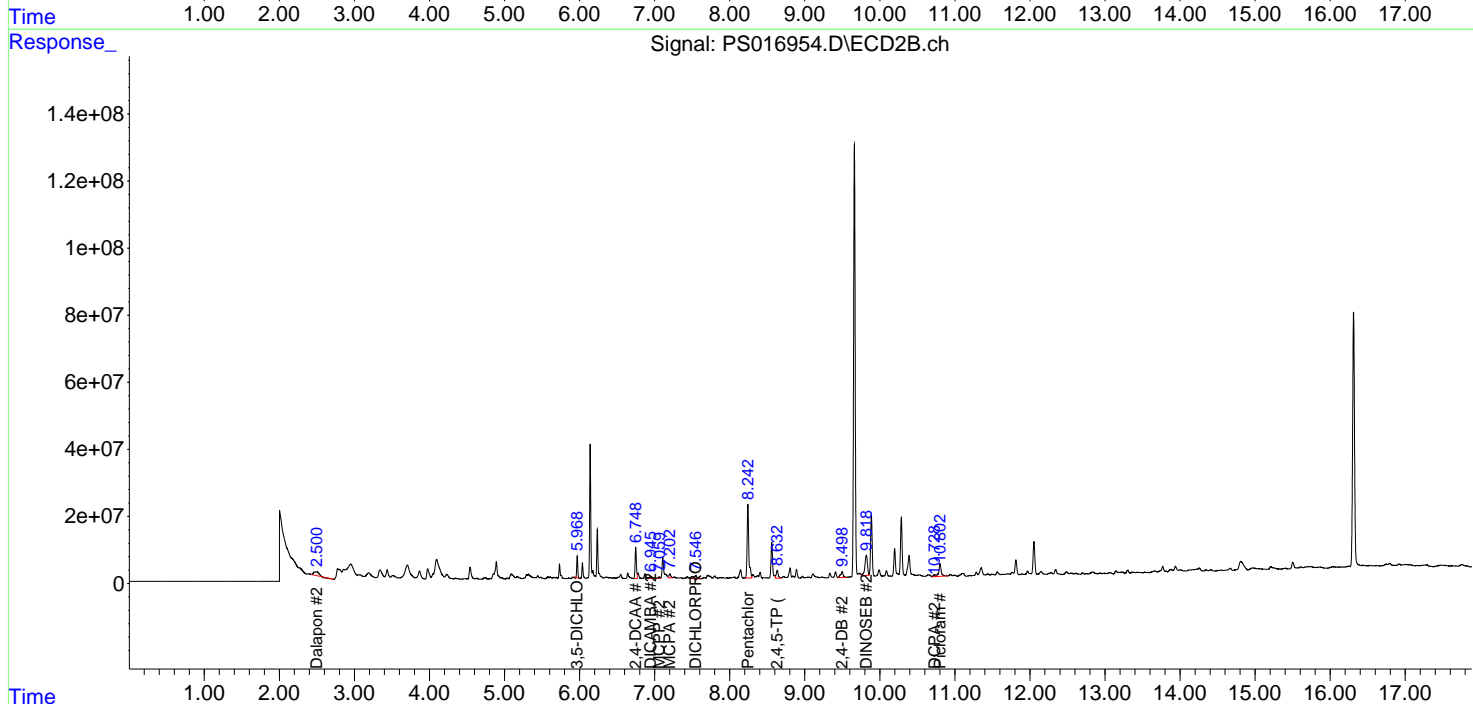
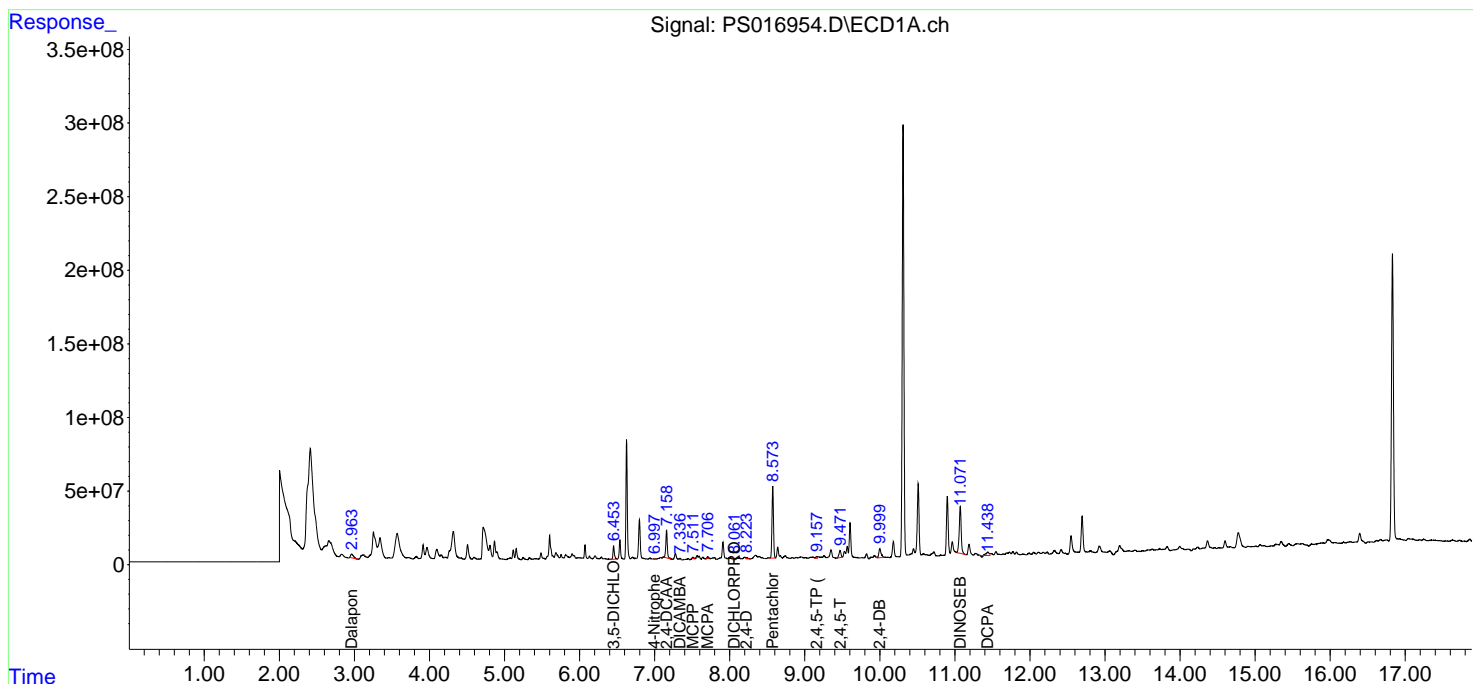
(f)=RT Delta > 1/2 Window (#)=Amounts differ by > 25% (m)=manual int.

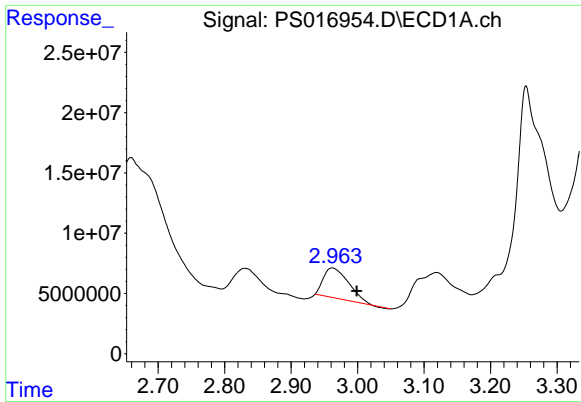
Data Path : Z:\pestpcbsrv\HPCHEM1\ECD_S\Data\PS100421\
 Data File : PS016954.D
 Signal(s) : Signal #1: ECD1A.ch Signal #2: ECD2B.ch
 Acq On : 04 Oct 2021 17:16
 Operator : DD\AJ
 Sample : M3971-10
 Misc :
 ALS Vial : 17 Sample Multiplier: 1

Instrument :
 ECD_S
 ClientSampled :

Integration File signal 1: autoint1.e
 Integration File signal 2: autoint2.e
 Quant Time: Oct 05 01:53:47 2021
 Quant Method : Z:\pestpcbsrv\HPCHEM1\ECD_S\Method\PS092021.M
 Quant Title : 8080.M
 QLast Update : Tue Sep 21 01:52:13 2021
 Response via : Initial Calibration
 Integrator: ChemStation

Volume Inj. : 2 µl
 Signal #1 Phase : Rtx-CLPesticides Signal #2 Phase: Rtx-CLPesticides2
 Signal #1 Info : 30M x 0.32mm x 0.5 Signal #2 Info : 30M x 0.32mm x 0.25µm

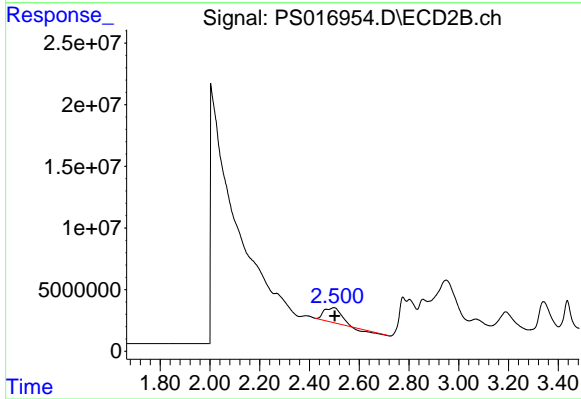




#1 Dalapon

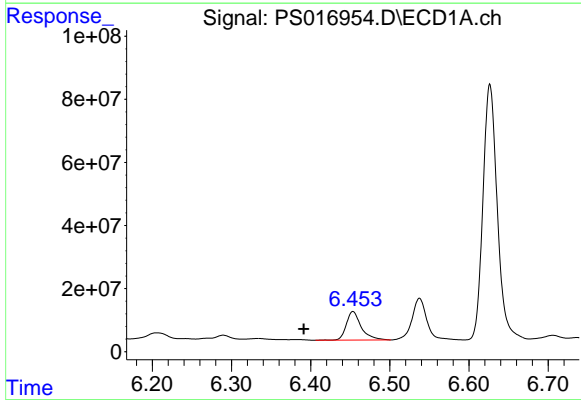
R.T.: 2.962 min
 Delta R.T.: -0.037 min
 Response: 65271385
 Conc: 27.37 ng/ml

Instrument :
 ECD_S
 ClientSampleId :



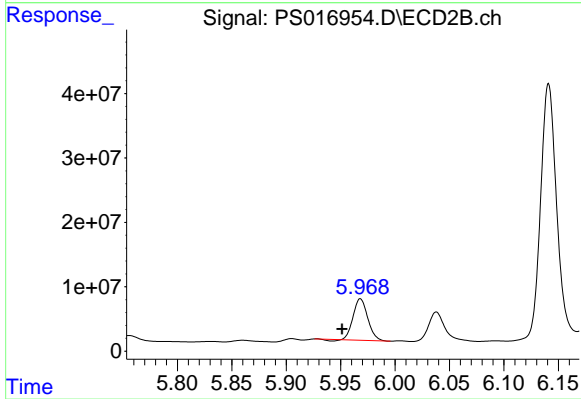
#1 Dalapon

R.T.: 2.498 min
 Delta R.T.: -0.004 min
 Response: 49624716
 Conc: 68.28 ng/ml



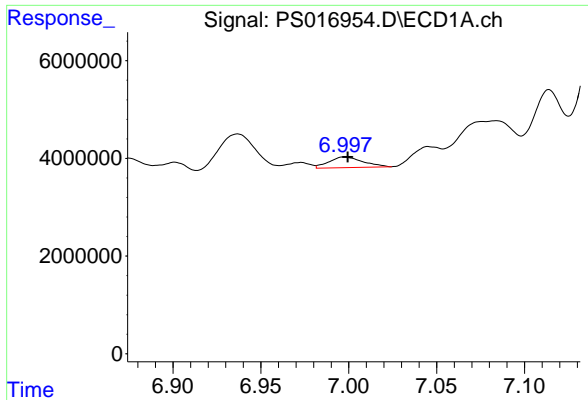
#2 3,5-DICHLOROBENZOIC ACID

R.T.: 6.453 min
 Delta R.T.: 0.062 min
 Response: 118385509
 Conc: 55.63 ng/ml



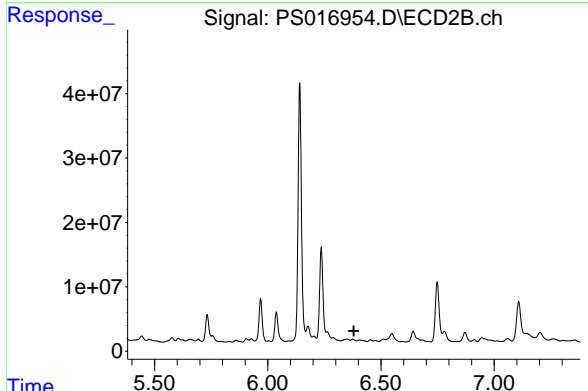
#2 3,5-DICHLOROBENZOIC ACID

R.T.: 5.968 min
 Delta R.T.: 0.017 min
 Response: 59187871
 Conc: 67.13 ng/ml

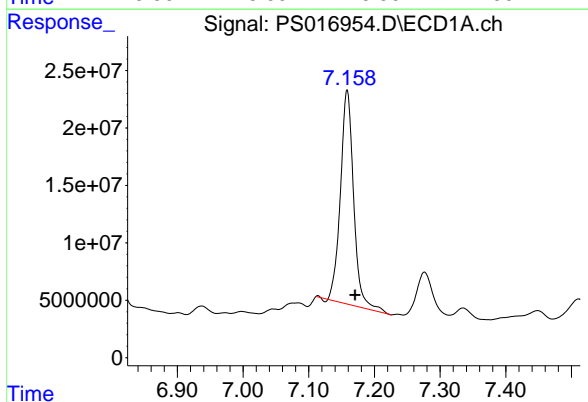


#3 4-Nitrophenol
 R.T.: 6.998 min
 Delta R.T.: -0.002 min
 Response: 2915064
 Conc: 3.37 ng/ml

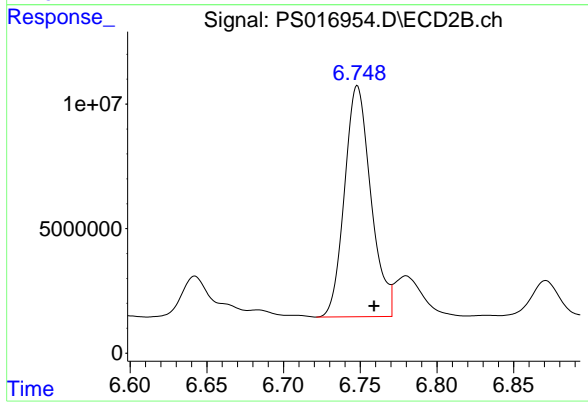
Instrument :
 ECD_S
 ClientSampled :



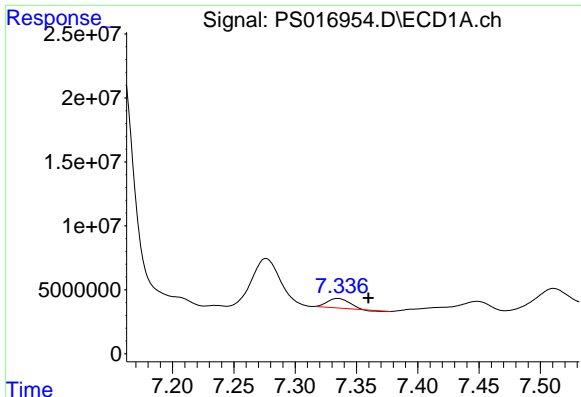
#3 4-Nitrophenol
 R.T.: 0.000 min
 Exp R.T. : 6.381 min
 Response: 0
 Conc: N.D.



#4 2,4-DCAA
 R.T.: 7.158 min
 Delta R.T.: -0.012 min
 Response: 260868287
 Conc: 171.22 ng/ml

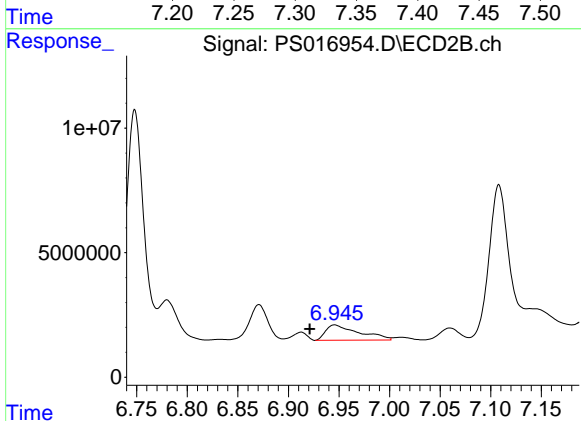


#4 2,4-DCAA
 R.T.: 6.748 min
 Delta R.T.: -0.011 min
 Response: 111385078
 Conc: 189.96 ng/ml

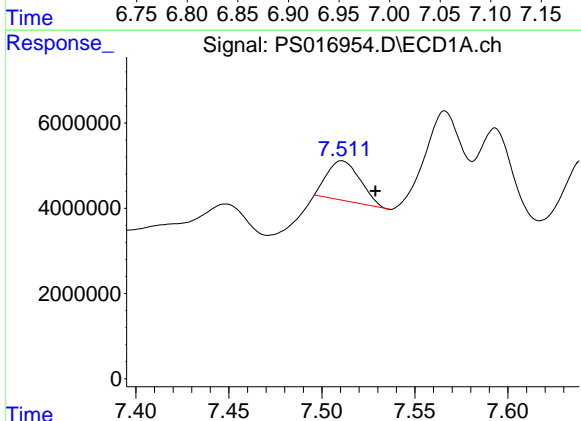


#5 DICAMBA
 R.T.: 7.335 min
 Delta R.T.: -0.025 min
 Response: 8863086
 Conc: 1.52 ng/ml

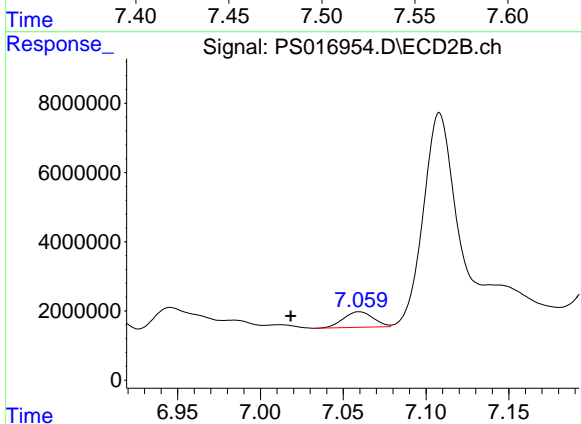
Instrument :
 ECD_S
 ClientSampleId :



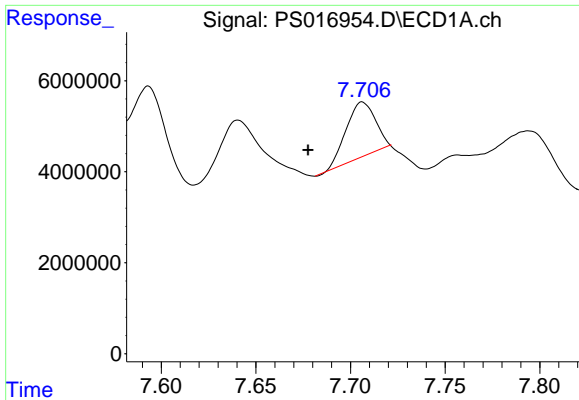
#5 DICAMBA
 R.T.: 6.946 min
 Delta R.T.: 0.025 min
 Response: 14148604
 Conc: 5.55 ng/ml



#6 MCPP
 R.T.: 7.511 min
 Delta R.T.: -0.018 min
 Response: 11484172
 Conc: 2.65 ug/ml

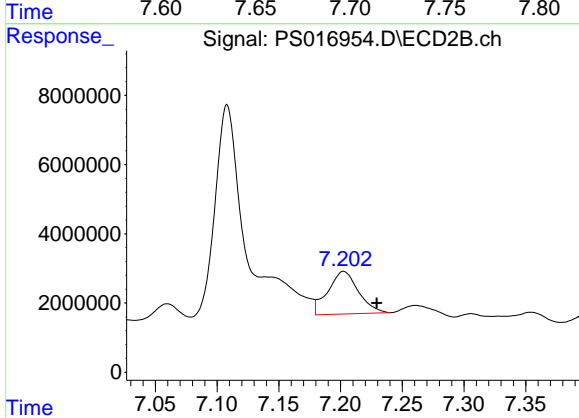


#6 MCPP
 R.T.: 7.060 min
 Delta R.T.: 0.041 min
 Response: 5629303
 Conc: 2.75 ug/ml

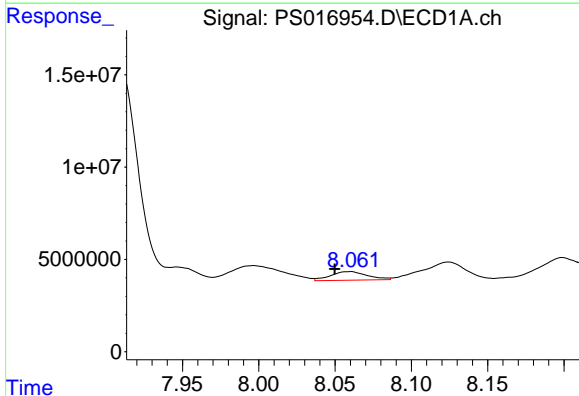


#7 MCPA
 R.T.: 7.706 min
 Delta R.T.: 0.029 min
 Response: 12869392
 Conc: 2.08 ug/ml

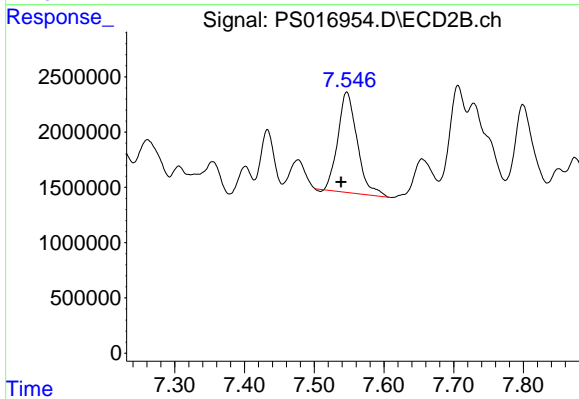
Instrument :
 ECD_S
 ClientSampled :



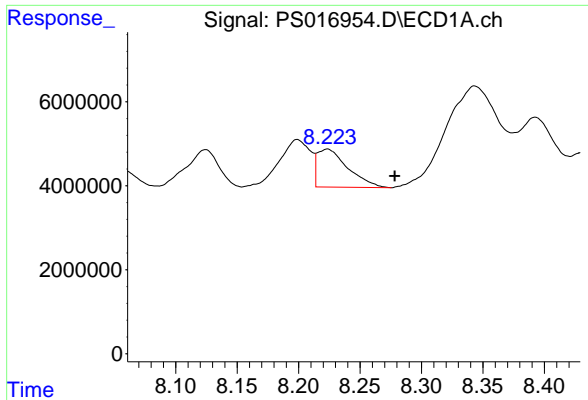
#7 MCPA
 R.T.: 7.202 min
 Delta R.T.: -0.027 min
 Response: 21208069
 Conc: 6.96 ug/ml



#8 DICHLORPROP
 R.T.: 8.060 min
 Delta R.T.: 0.010 min
 Response: 7740491
 Conc: 5.24 ng/ml

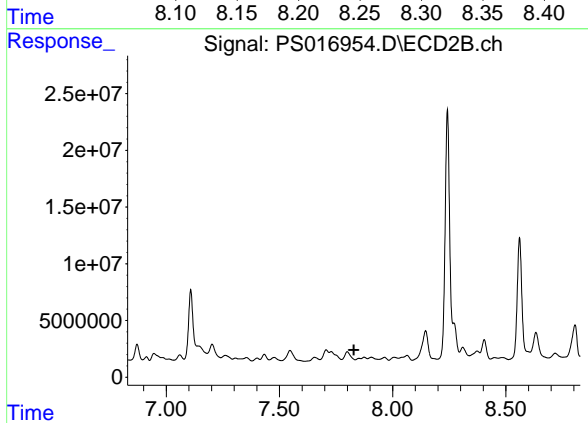


#8 DICHLORPROP
 R.T.: 7.547 min
 Delta R.T.: 0.008 min
 Response: 17485892
 Conc: 26.96 ng/ml

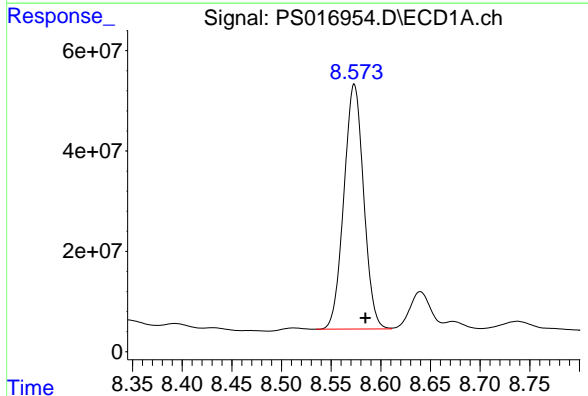


#9 2,4-D
 R.T.: 8.223 min
 Delta R.T.: -0.055 min
 Response: 15607101
 Conc: 8.88 ng/ml

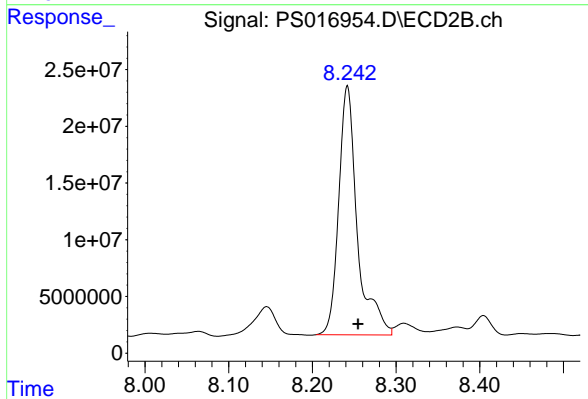
Instrument :
 ECD_S
 ClientSampled :



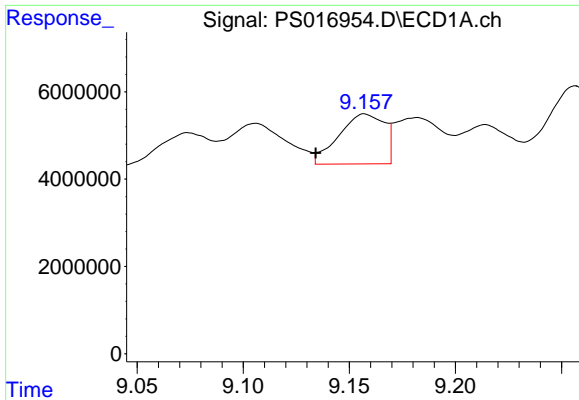
#9 2,4-D
 R.T.: 0.000 min
 Exp R.T. : 7.829 min
 Response: 0
 Conc: N.D.



#10 Pentachlorophenol
 R.T.: 8.573 min
 Delta R.T.: -0.011 min
 Response: 676956297
 Conc: 33.50 ng/ml

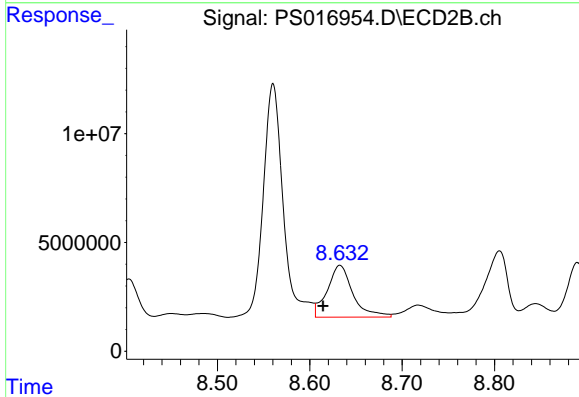


#10 Pentachlorophenol
 R.T.: 8.242 min
 Delta R.T.: -0.013 min
 Response: 339864862
 Conc: 41.30 ng/ml

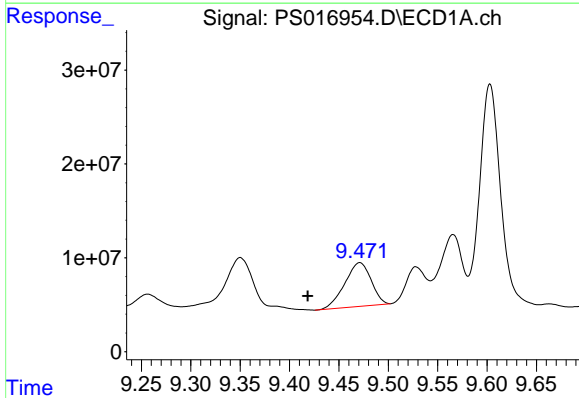


#11 2,4,5-TP (SILVEX)
 R.T.: 9.157 min
 Delta R.T.: 0.023 min
 Response: 17111562
 Conc: 2.14 ng/ml

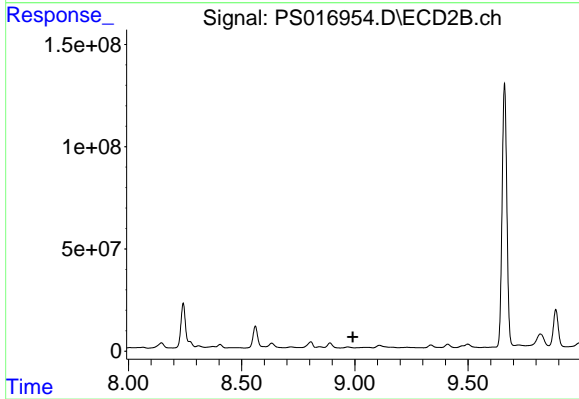
Instrument :
 ECD_S
 ClientSampleId :



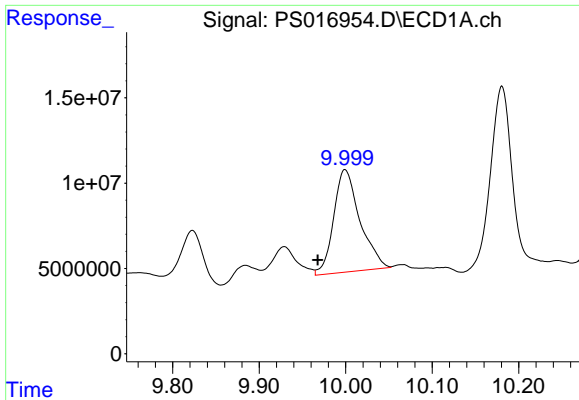
#11 2,4,5-TP (SILVEX)
 R.T.: 8.633 min
 Delta R.T.: 0.018 min
 Response: 46109671
 Conc: 13.17 ng/ml



#12 2,4,5-T
 R.T.: 9.471 min
 Delta R.T.: 0.053 min
 Response: 86116802
 Conc: 10.43 ng/ml

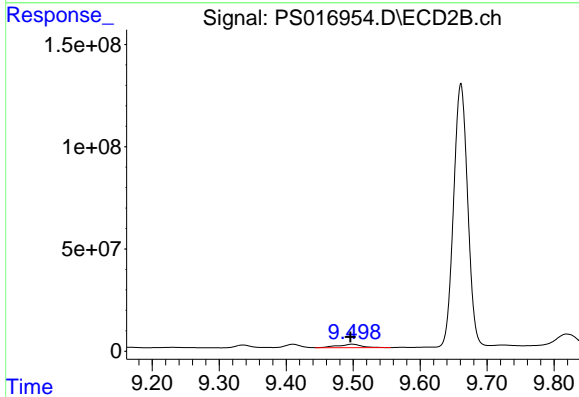


#12 2,4,5-T
 R.T.: 0.000 min
 Exp R.T. : 8.991 min
 Response: 0
 Conc: N.D.

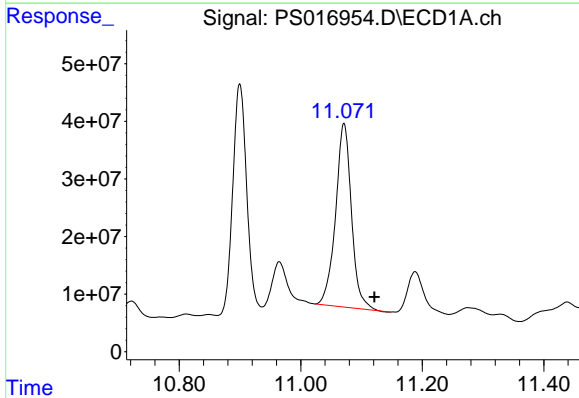


#13 2,4-DB
 R.T.: 9.999 min
 Delta R.T.: 0.032 min
 Response: 126556686
 Conc: 76.56 ng/ml

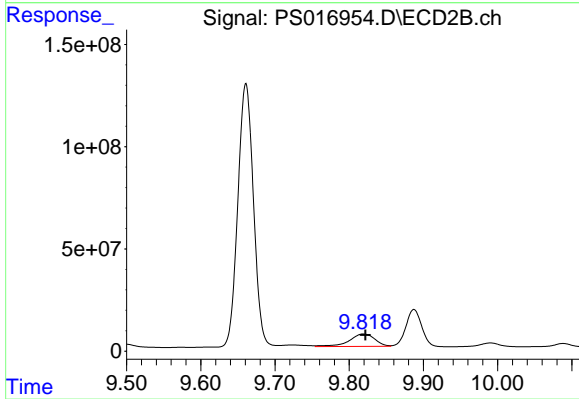
Instrument :
 ECD_S
 ClientSampleId :



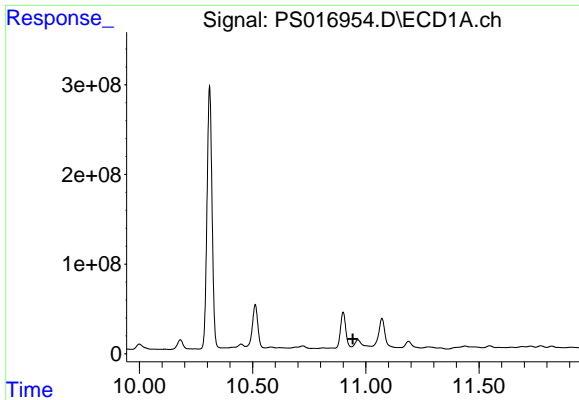
#13 2,4-DB
 R.T.: 9.498 min
 Delta R.T.: 0.002 min
 Response: 40821304
 Conc: 97.97 ng/ml



#14 DINOSEB
 R.T.: 11.071 min
 Delta R.T.: -0.050 min
 Response: 578964875
 Conc: 95.03 ng/ml



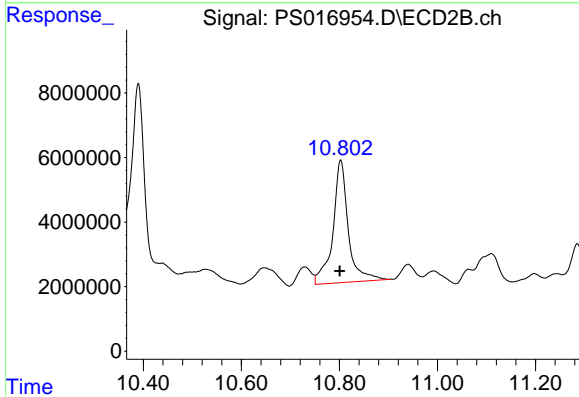
#14 DINOSEB
 R.T.: 9.819 min
 Delta R.T.: -0.003 min
 Response: 145832739
 Conc: 59.53 ng/ml



#15 Picloram

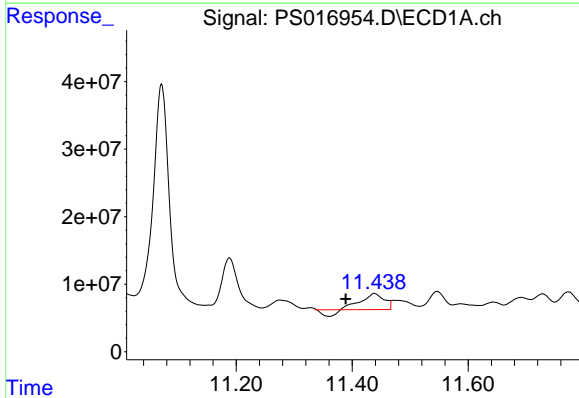
R.T.: 10.965 min
 Delta R.T.: 0.022 min
 Response: -314670960
 Conc: N.D.

Instrument :
 ECD_S
 ClientSampleId :



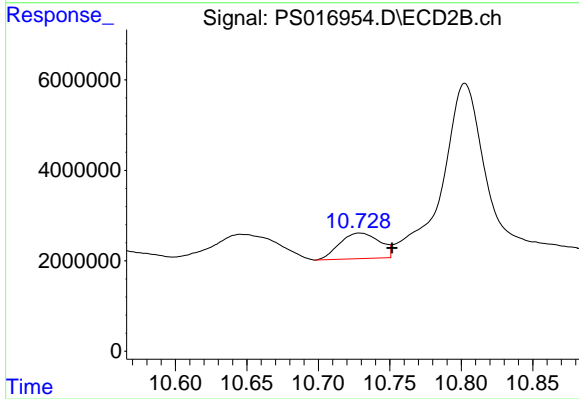
#15 Picloram

R.T.: 10.803 min
 Delta R.T.: 0.002 min
 Response: 82915881
 Conc: 19.33 ng/ml



#16 DCPA

R.T.: 11.438 min
 Delta R.T.: 0.049 min
 Response: 55283699
 Conc: 5.38 ng/ml



#16 DCPA

R.T.: 10.729 min
 Delta R.T.: -0.022 min
 Response: 10992617
 Conc: 2.52 ng/ml