

Data Path : Z:\pestpcbsrv\HPCHEM1\ECD_S\Data\PS100423\
 Data File : PS024553.D
 Signal(s) : Signal #1: ECD1A.ch Signal #2: ECD2B.ch
 Acq On : 05 Oct 2023 03:20
 Operator : AR\AJ
 Sample : HSTDCCC750
 Misc :
 ALS Vial : 3 Sample Multiplier: 1

Instrument :
 ECD_S
 ClientSampleId :

Integration File signal 1: autoint1.e
 Integration File signal 2: autoint2.e
 Quant Time: Oct 05 04:49:11 2023
 Quant Method : Z:\pestpcbsrv\HPCHEM1\ECD_S\Method\PS100323.M
 Quant Title : 8080.M
 QLast Update : Tue Oct 03 14:54:54 2023
 Response via : Initial Calibration
 Integrator: ChemStation

Volume Inj. : 2 µl
 Signal #1 Phase : Rtx-CLPesticides Signal #2 Phase: Rtx-CLPesticides2
 Signal #1 Info : 30M x 0.32mm x0.5 Signal #2 Info : 30M x 0.32mm x 0.25µm

Compound	RT#1	RT#2	Resp#1	Resp#2	ng/ml	ng/ml

System Monitoring Compounds						
4) S 2,4-DCAA	6.358	6.782	1570.4E6	537.3E6	763.337	777.221
Target Compounds						
1) T Dalapon	2.478	2.540	1679.8E6	750.1E6	679.909	670.249
2) T 3,5-DICHL...	5.733	5.968	2254.1E6	793.6E6	718.616	730.328
3) T 4-Nitroph...	6.196	6.396	954.3E6	321.9E6	704.989	705.816
5) T DICAMBA	6.500	6.944	6587.1E6	2197.6E6	734.291	742.090
6) T MCPP	6.651	7.041	499.9E6	147.0E6	78.898	74.584
7) T MCPA	6.774	7.248	635.8E6	228.5E6	71.334	71.322
8) T DICHLORPROP	7.087	7.559	1691.3E6	556.0E6	719.473	739.372
9) T 2,4-D	7.284	7.842	1991.0E6	671.0E6	720.598	728.935
10) T Pentachlo...	7.513	8.266	24408.3E6	8125.4E6	750.683	745.712
11) T 2,4,5-TP ...	8.034	8.625	10201.4E6	3152.7E6	736.296	743.373
12) T 2,4,5-T	8.288	8.994	9668.6E6	3077.2E6	740.023	746.253
13) T 2,4-DB	8.793	9.497	1503.7E6	387.3E6	736.065	759.994
14) T DINOSEB	9.846	9.825	7330.5E6	2212.8E6	717.093	713.571
15) T Picloram	9.671	10.777	12439.4E6	4458.2E6	713.419	717.400
16) T DCPA	10.111	10.747	12664.6E6	3874.3E6	743.984	742.567

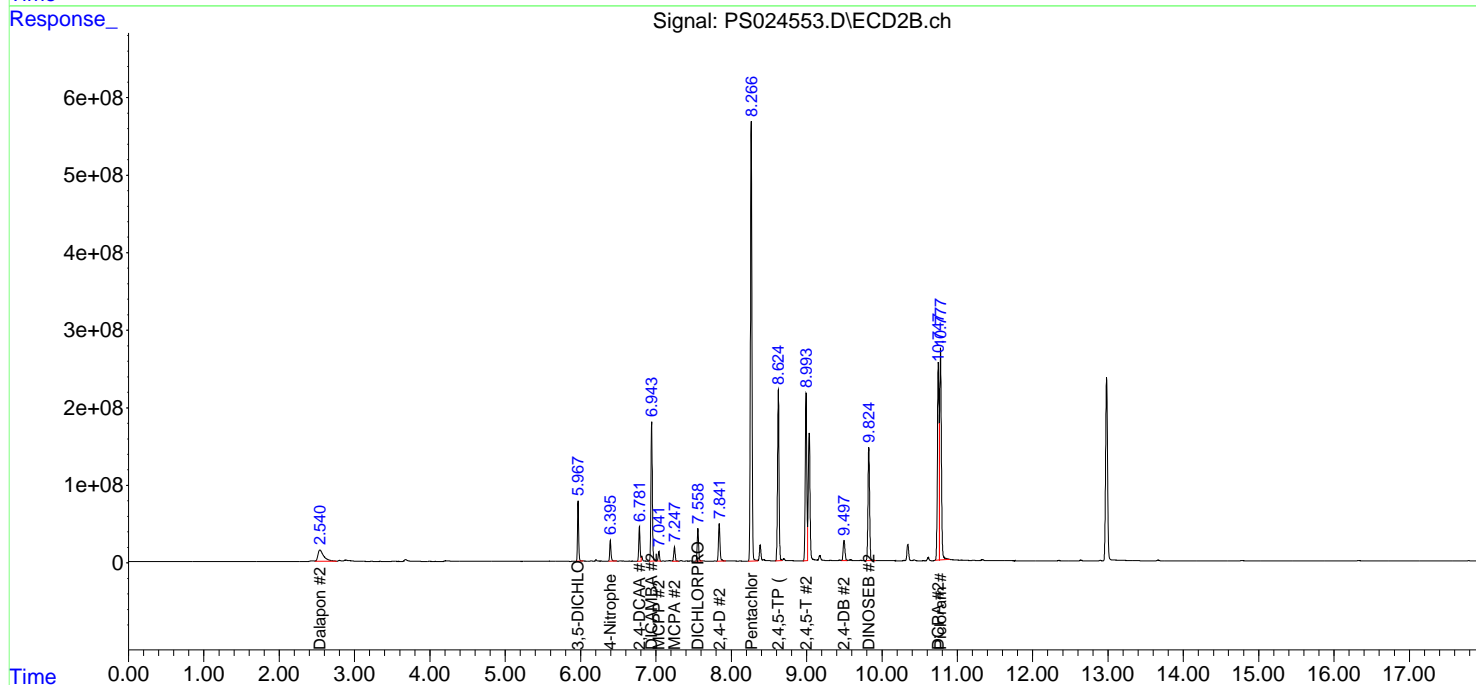
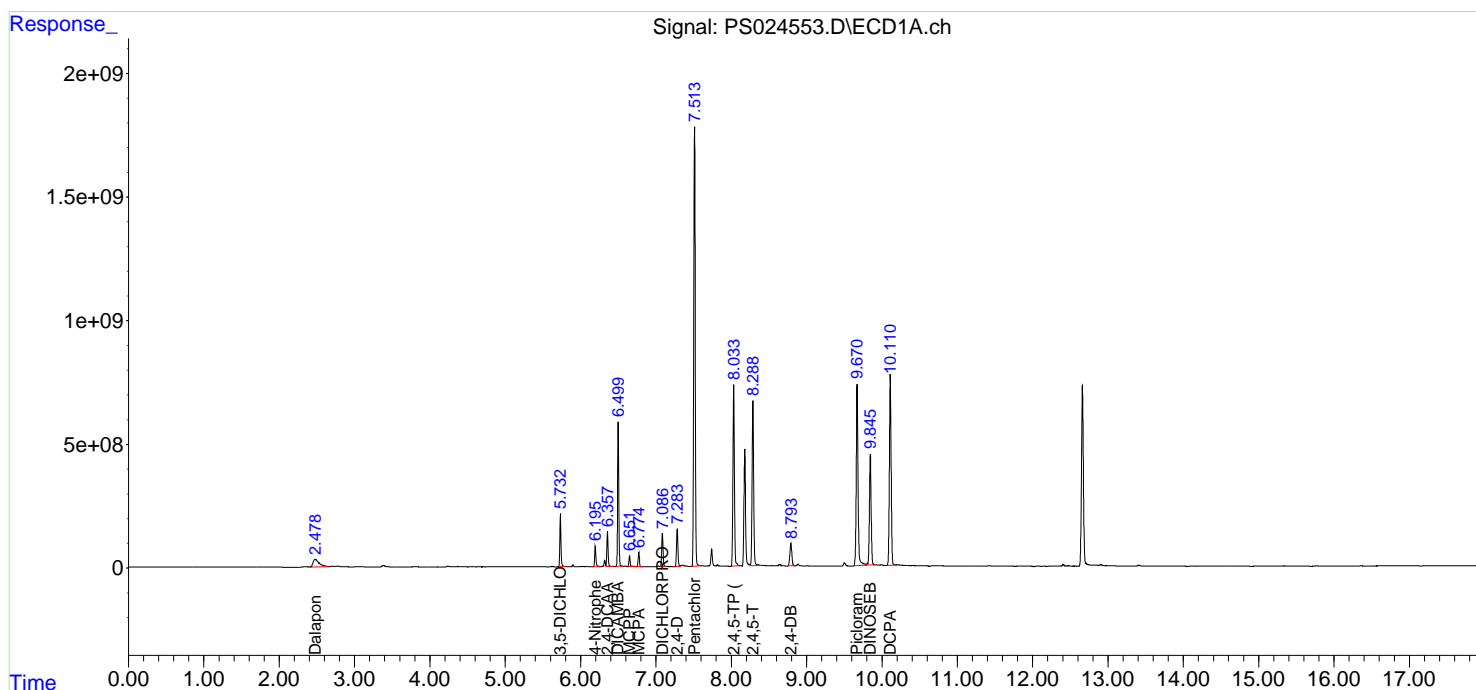
(f)=RT Delta > 1/2 Window (#)=Amounts differ by > 25% (m)=manual int.

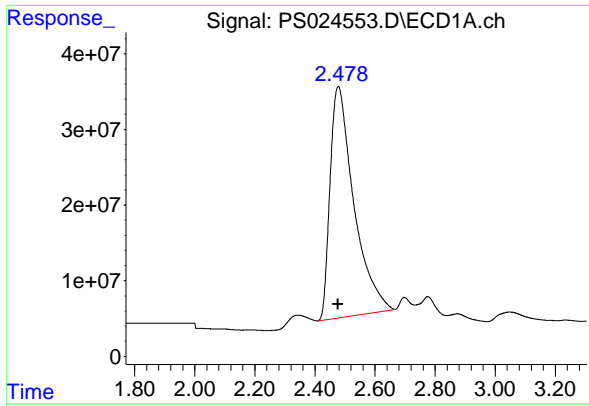
Data Path : Z:\pestpcbsrv\HPCHEM1\ECD_S\Data\PS100423\
 Data File : PS024553.D
 Signal(s) : Signal #1: ECD1A.ch Signal #2: ECD2B.ch
 Acq On : 05 Oct 2023 03:20
 Operator : AR\AJ
 Sample : HSTDCCC750
 Misc :
 ALS Vial : 3 Sample Multiplier: 1

Instrument :
 ECD_S
 ClientSampleId :

Integration File signal 1: autoint1.e
 Integration File signal 2: autoint2.e
 Quant Time: Oct 05 04:49:11 2023
 Quant Method : Z:\pestpcbsrv\HPCHEM1\ECD_S\Method\PS100323.M
 Quant Title : 8080.M
 QLast Update : Tue Oct 03 14:54:54 2023
 Response via : Initial Calibration
 Integrator: ChemStation

Volume Inj. : 2 µl
 Signal #1 Phase : Rtx-CLPesticides Signal #2 Phase: Rtx-CLPesticides2
 Signal #1 Info : 30M x 0.32mm x0.5 Signal #2 Info : 30M x 0.32mm x 0.25µm

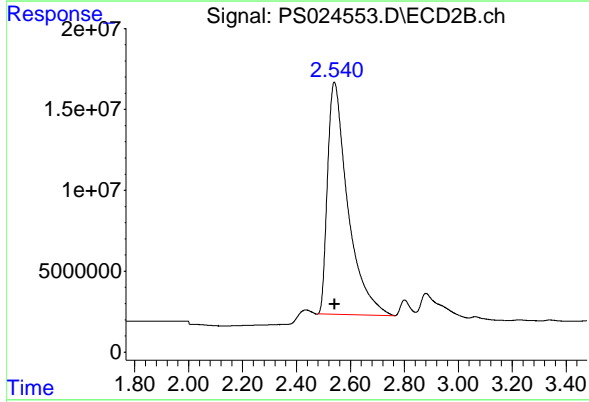




#1 Dalapon

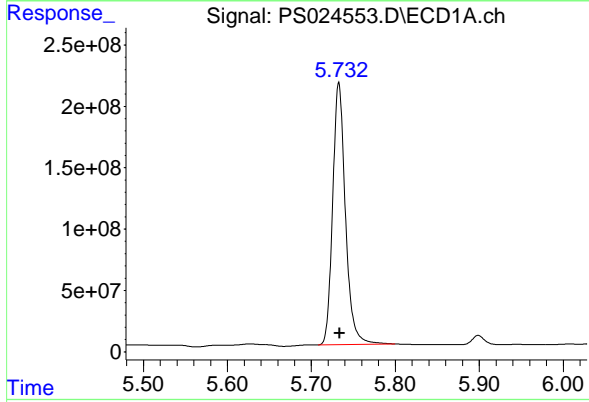
R.T.: 2.478 min
Delta R.T.: 0.002 min
Response: 1679753005
Conc: 679.91 ng/ml

Instrument :
ECD_S
ClientSampleId :



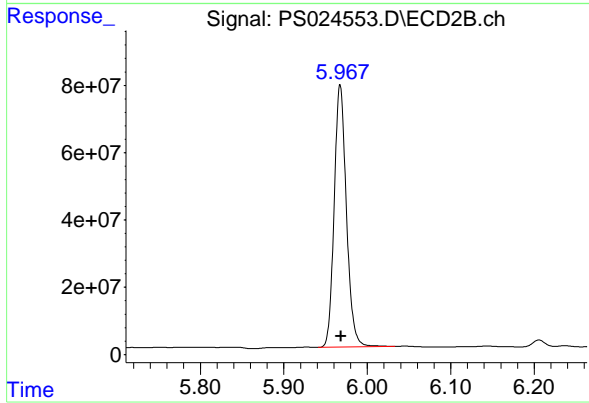
#1 Dalapon

R.T.: 2.540 min
Delta R.T.: -0.002 min
Response: 750097909
Conc: 670.25 ng/ml



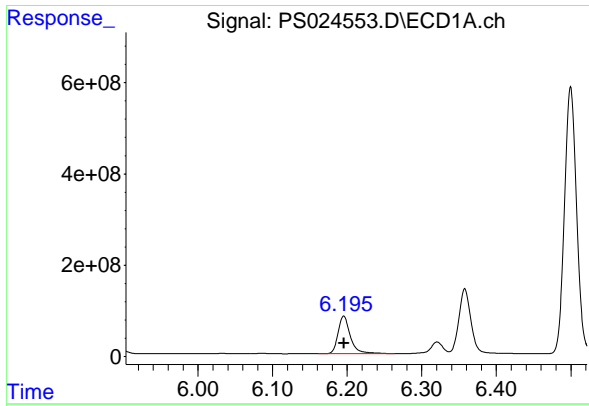
#2 3,5-DICHLOROBENZOIC ACID

R.T.: 5.733 min
Delta R.T.: 0.000 min
Response: 2254142251
Conc: 718.62 ng/ml



#2 3,5-DICHLOROBENZOIC ACID

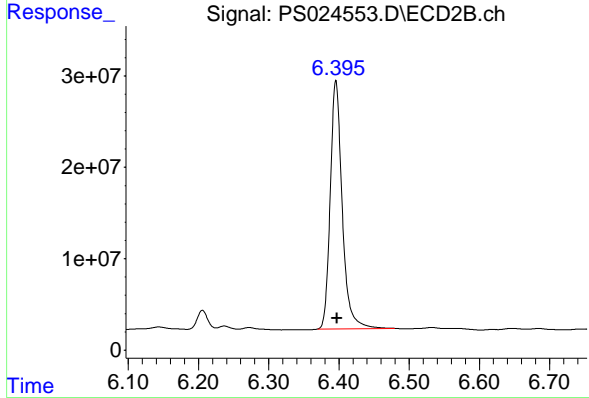
R.T.: 5.968 min
Delta R.T.: -0.001 min
Response: 793647426
Conc: 730.33 ng/ml



#3 4-Nitrophenol

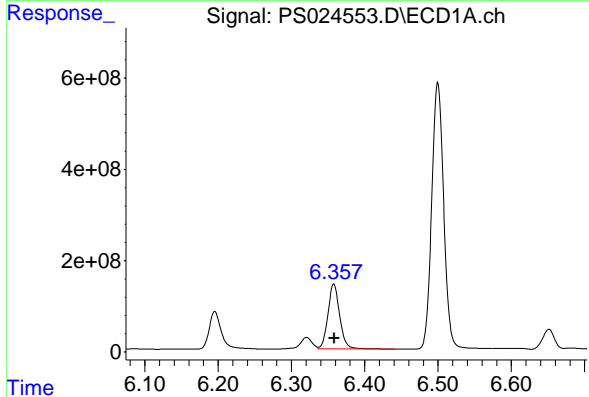
R.T.: 6.196 min
 Delta R.T.: 0.000 min
 Response: 954325474
 Conc: 704.99 ng/ml

Instrument :
 ECD_S
 ClientSampleId :



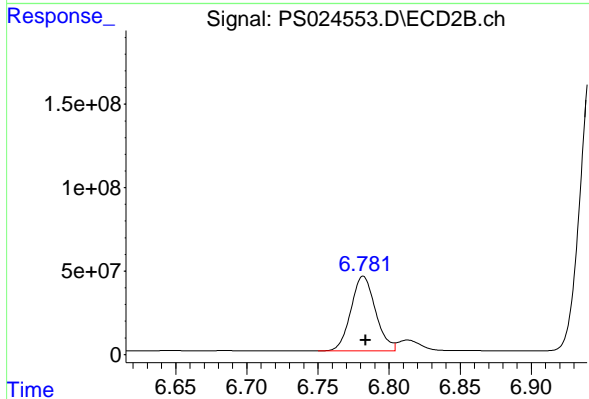
#3 4-Nitrophenol

R.T.: 6.396 min
 Delta R.T.: -0.001 min
 Response: 321949020
 Conc: 705.82 ng/ml



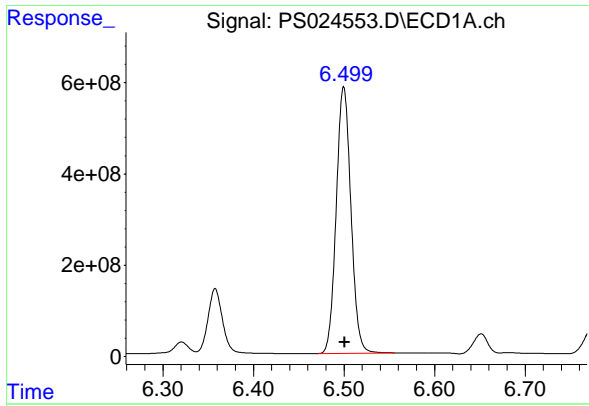
#4 2,4-DCAA

R.T.: 6.358 min
 Delta R.T.: 0.000 min
 Response: 1570435200
 Conc: 763.34 ng/ml



#4 2,4-DCAA

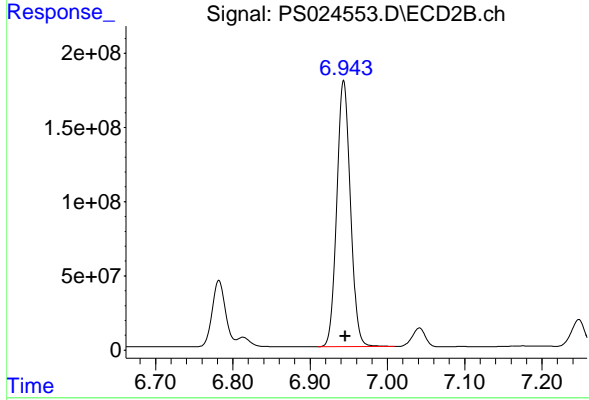
R.T.: 6.782 min
 Delta R.T.: -0.002 min
 Response: 537285881
 Conc: 777.22 ng/ml



#5 DICAMBA

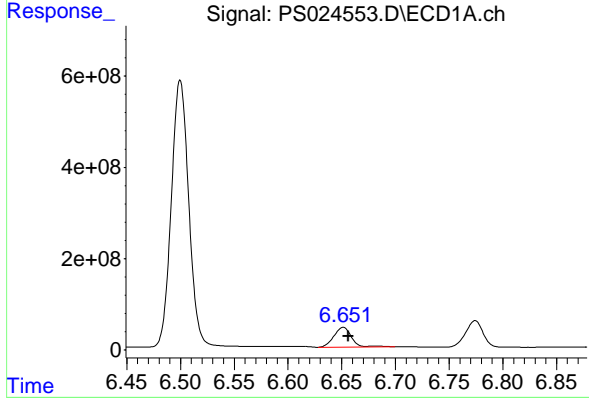
R.T.: 6.500 min
 Delta R.T.: 0.000 min
 Response: 6587059307
 Conc: 734.29 ng/ml

Instrument :
 ECD_S
 ClientSampleId :



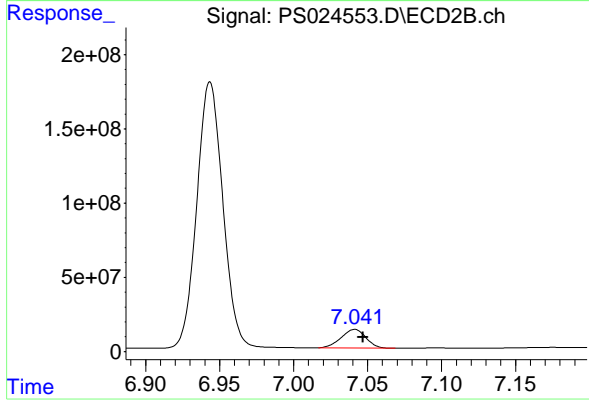
#5 DICAMBA

R.T.: 6.944 min
 Delta R.T.: -0.002 min
 Response: 2197551705
 Conc: 742.09 ng/ml



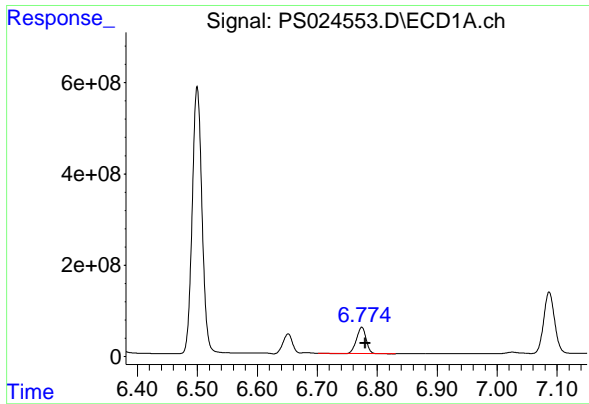
#6 MCPP

R.T.: 6.651 min
 Delta R.T.: -0.005 min
 Response: 499852618
 Conc: 78.90 ug/ml



#6 MCPP

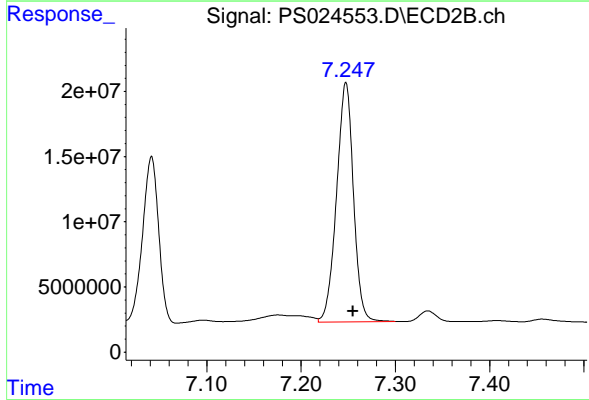
R.T.: 7.041 min
 Delta R.T.: -0.005 min
 Response: 146976886
 Conc: 74.58 ug/ml



#7 MCPA

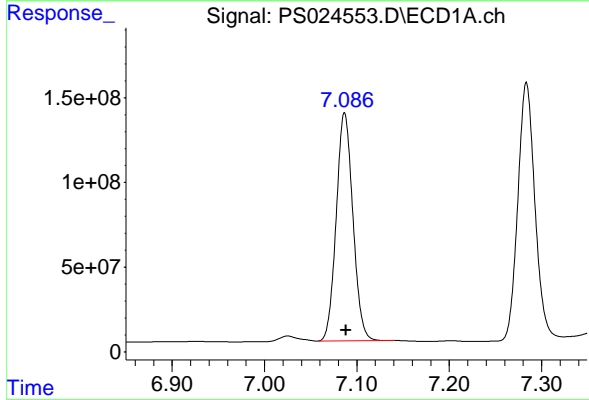
R.T.: 6.774 min
 Delta R.T.: -0.006 min
 Response: 635763327
 Conc: 71.33 ug/ml

Instrument :
 ECD_S
 ClientSampleId :



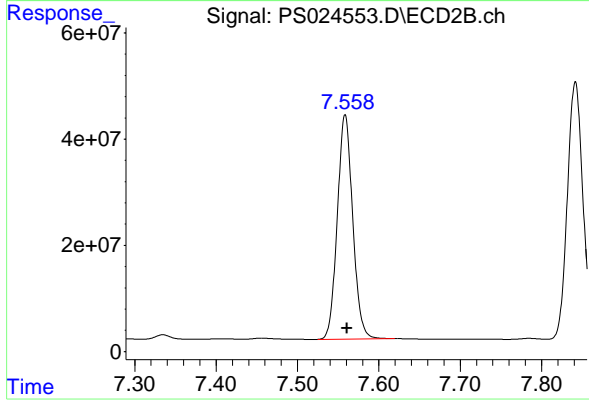
#7 MCPA

R.T.: 7.248 min
 Delta R.T.: -0.007 min
 Response: 228537160
 Conc: 71.32 ug/ml



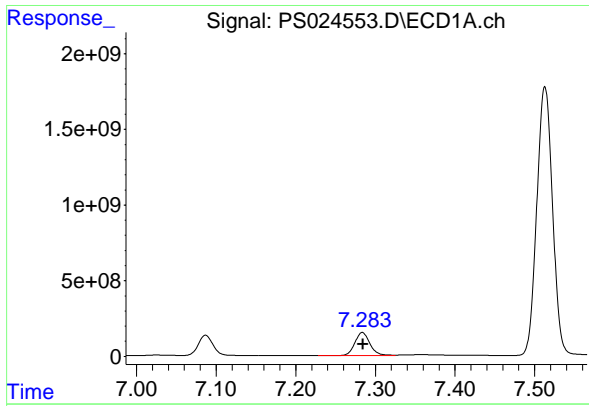
#8 DICHLORPROP

R.T.: 7.087 min
 Delta R.T.: -0.001 min
 Response: 1691323680
 Conc: 719.47 ng/ml



#8 DICHLORPROP

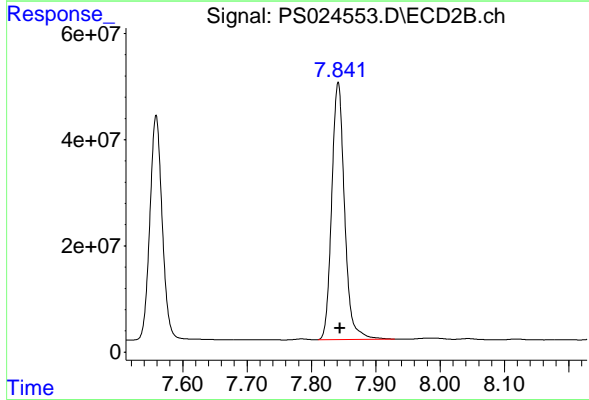
R.T.: 7.559 min
 Delta R.T.: -0.002 min
 Response: 556037664
 Conc: 739.37 ng/ml



#9 2,4-D

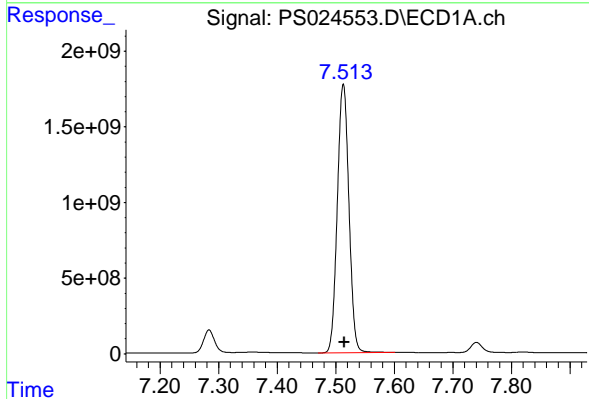
R.T.: 7.284 min
 Delta R.T.: 0.000 min
 Response: 1991007777
 Conc: 720.60 ng/ml

Instrument :
 ECD_S
 ClientSampleId :



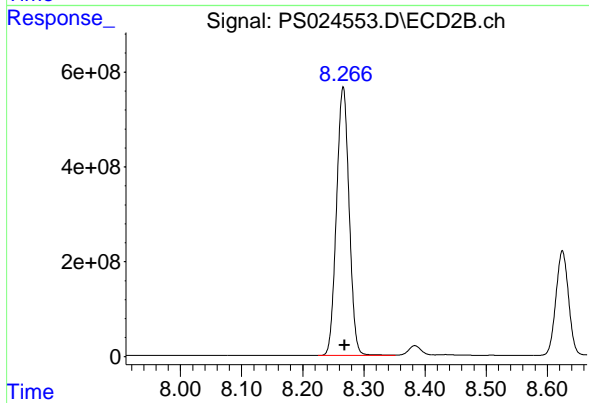
#9 2,4-D

R.T.: 7.842 min
 Delta R.T.: -0.003 min
 Response: 670954857
 Conc: 728.94 ng/ml



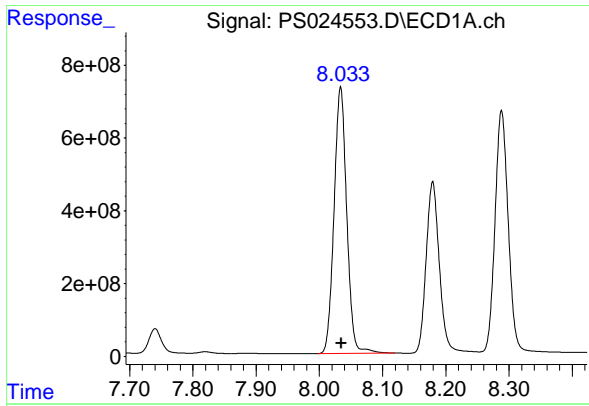
#10 Pentachlorophenol

R.T.: 7.513 min
 Delta R.T.: -0.002 min
 Response: 24408348045
 Conc: 750.68 ng/ml



#10 Pentachlorophenol

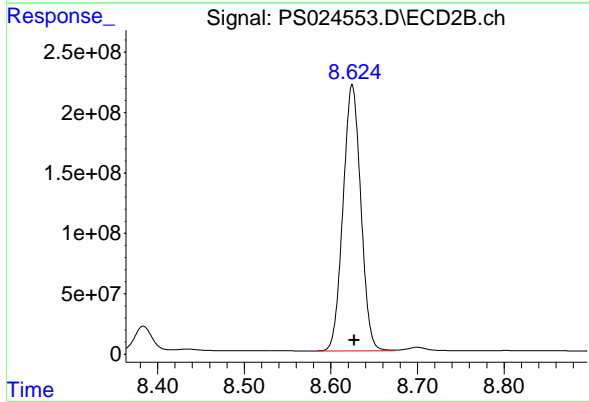
R.T.: 8.266 min
 Delta R.T.: -0.003 min
 Response: 8125439208
 Conc: 745.71 ng/ml



#11 2,4,5-TP (SILVEX)

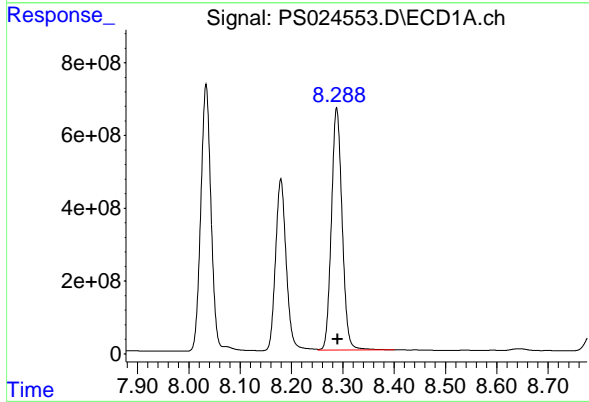
R.T.: 8.034 min
 Delta R.T.: -0.001 min
 Response: 10201427986
 Conc: 736.30 ng/ml

Instrument :
 ECD_S
 ClientSampleId :



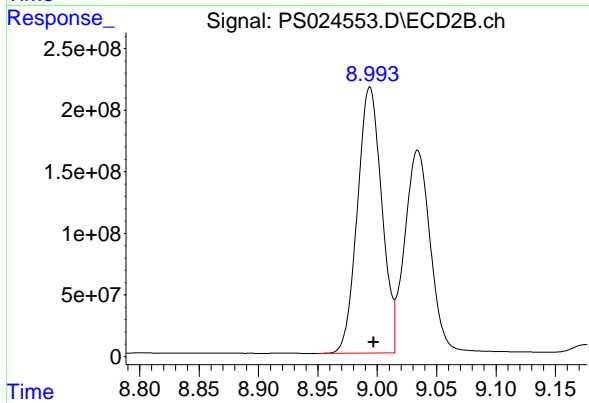
#11 2,4,5-TP (SILVEX)

R.T.: 8.625 min
 Delta R.T.: -0.002 min
 Response: 3152712699
 Conc: 743.37 ng/ml



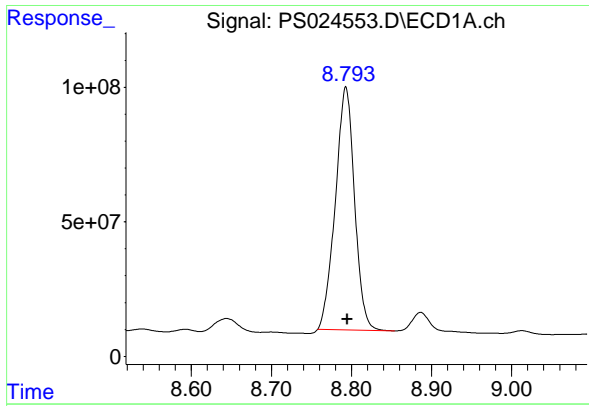
#12 2,4,5-T

R.T.: 8.288 min
 Delta R.T.: -0.002 min
 Response: 9668571386
 Conc: 740.02 ng/ml



#12 2,4,5-T

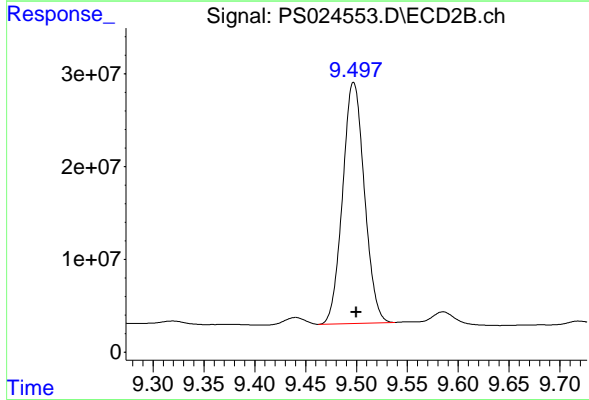
R.T.: 8.994 min
 Delta R.T.: -0.003 min
 Response: 3077191158
 Conc: 746.25 ng/ml



#13 2,4-DB

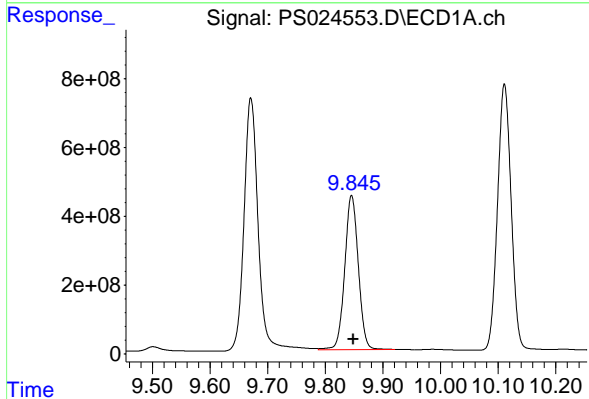
R.T.: 8.793 min
 Delta R.T.: -0.002 min
 Response: 1503742107
 Conc: 736.06 ng/ml

Instrument :
 ECD_S
 ClientSampleId :



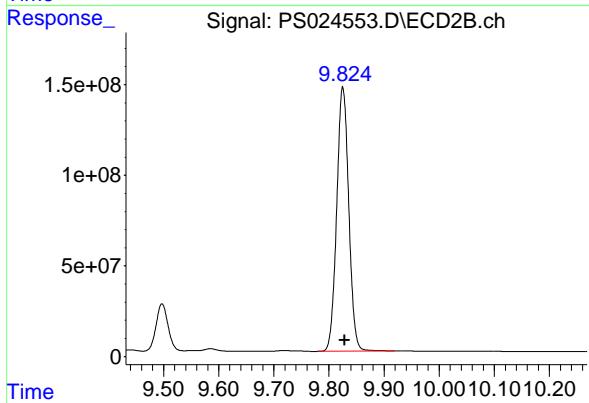
#13 2,4-DB

R.T.: 9.497 min
 Delta R.T.: -0.003 min
 Response: 387278135
 Conc: 759.99 ng/ml



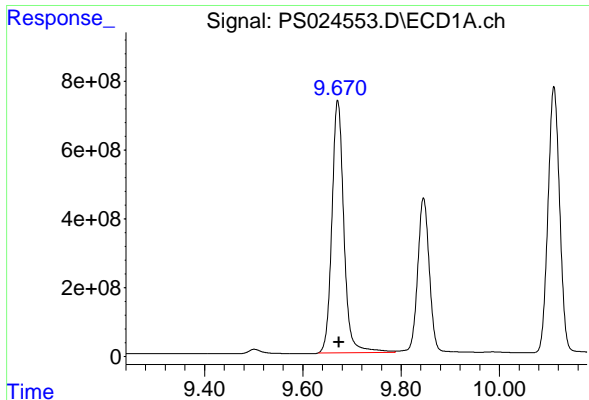
#14 DINOSEB

R.T.: 9.846 min
 Delta R.T.: -0.003 min
 Response: 7330520768
 Conc: 717.09 ng/ml



#14 DINOSEB

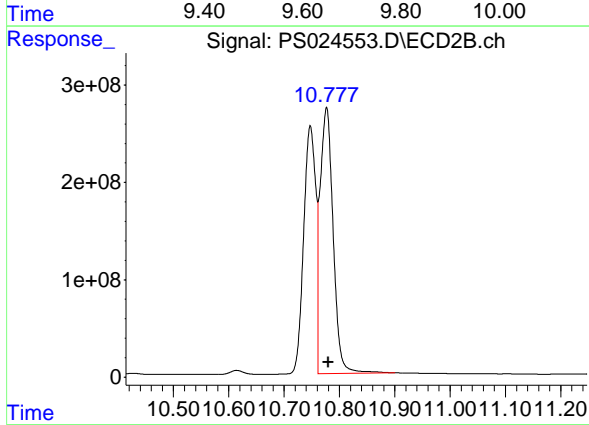
R.T.: 9.825 min
 Delta R.T.: -0.004 min
 Response: 2212812324
 Conc: 713.57 ng/ml



#15 Picloram

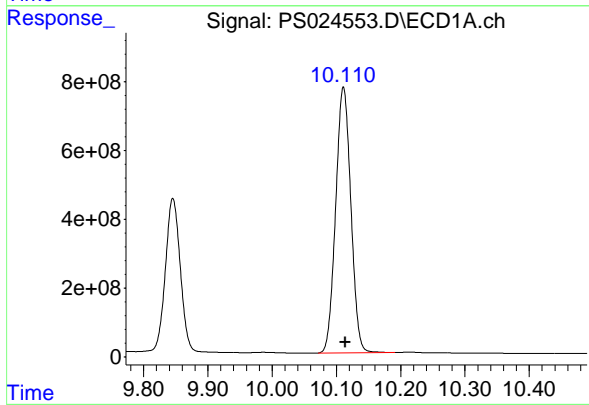
R.T.: 9.671 min
 Delta R.T.: -0.002 min
 Response: 12439401240
 Conc: 713.42 ng/ml

Instrument :
 ECD_S
 ClientSampleId :



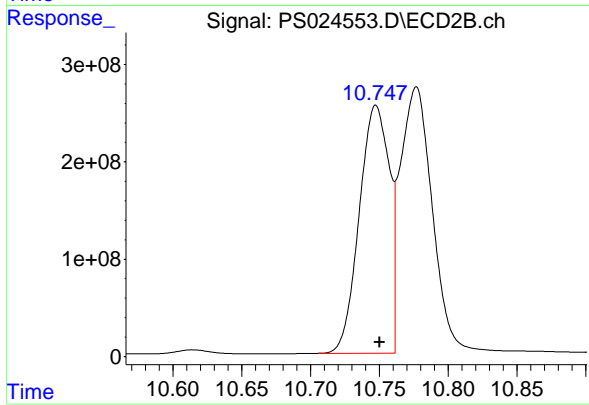
#15 Picloram

R.T.: 10.777 min
 Delta R.T.: -0.003 min
 Response: 4458193730
 Conc: 717.40 ng/ml



#16 DCPA

R.T.: 10.111 min
 Delta R.T.: -0.003 min
 Response: 12664647886
 Conc: 743.98 ng/ml



#16 DCPA

R.T.: 10.747 min
 Delta R.T.: -0.003 min
 Response: 3874299959
 Conc: 742.57 ng/ml