

Data Path : Z:\pestpcbsrv\HPCHEM1\ECD_S\Data\PS100520\
 Data File : PS012624.D
 Signal(s) : Signal #1: ECD1A.ch Signal #2: ECD2B.ch
 Acq On : 05 Oct 2020 15:19
 Operator : DD\AJ
 Sample : L3872-13
 Misc :
 ALS Vial : 6 Sample Multiplier: 1

Instrument :
 ECD_S
 ClientSampleId :

Integration File signal 1: autoint1.e
 Integration File signal 2: autoint2.e
 Quant Time: Oct 05 16:17:50 2020
 Quant Method : Z:\pestpcbsrv\HPCHEM1\ECD_S\Method\PS092220.M
 Quant Title : 8080.M
 QLast Update : Wed Sep 23 04:57:25 2020
 Response via : Initial Calibration
 Integrator: ChemStation

Volume Inj. : 2 µl
 Signal #1 Phase : Rtx-CLPesticides Signal #2 Phase: Rtx-CLPesticides2
 Signal #1 Info : 30M x 0.32mm x0.5 Signal #2 Info : 30M x 0.32mm x 0.25µm

	Compound	RT#1	RT#2	Resp#1	Resp#2	ng/ml	ng/ml

System Monitoring Compounds							
4) S	2,4-DCAA	7.217	6.915	36429876	2799931	37.194	6.087 #
Target Compounds							
1) T	Dalapon	2.994	2.588	68198805	56146771	60.015	93.861 #
2) T	3,5-DICHL...	0.000	6.094	0	92547272	N.D.	129.807
3) T	4-Nitroph...	6.989	0.000	22797397	0	46.883	N.D. #
5) T	DICAMBA	7.394	7.046	9924438	12884324	2.573	6.757 #
6) T	MCPD	7.568	7.188	9229518	1902149	3.163	1.257 #
7) T	MCPA	7.699	7.372	9641547	63491395	2.312	26.485 #
8) T	DICHLORPROP	0.000	7.742	0	15986711	N.D.	30.962
9) T	2,4-D	8.285	7.972	21755554	2496145	19.161	3.986 #
10) T	Pentachlo...	8.638	8.428	5055522	3375394	<MDL	<MDL #
11) T	2,4,5-TP ...	9.182	8.758	6984071	41273857	1.260	15.644 #
12) T	2,4,5-T	9.406	9.160	50127269	26483449	8.918	10.300
13) T	2,4-DB	0.000	9.689	0	25683805	N.D.	68.606
14) T	DINOSEB	11.152	10.024	41886252	24093652	9.226	12.579 #
15) T	Picloram	10.979	11.010	72533405	12740866	10.074	3.233 #
16) T	DCPA	11.454	10.932	38951563	9408859	5.515	2.829 #

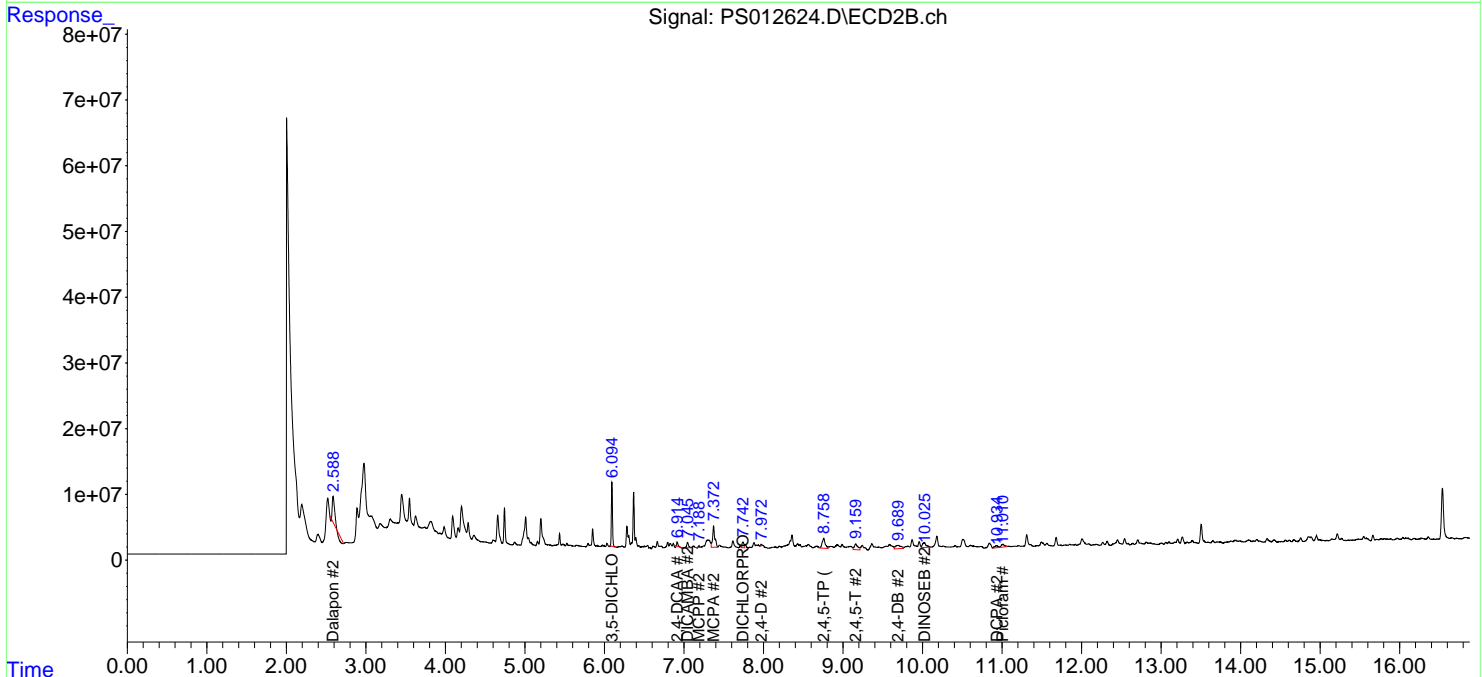
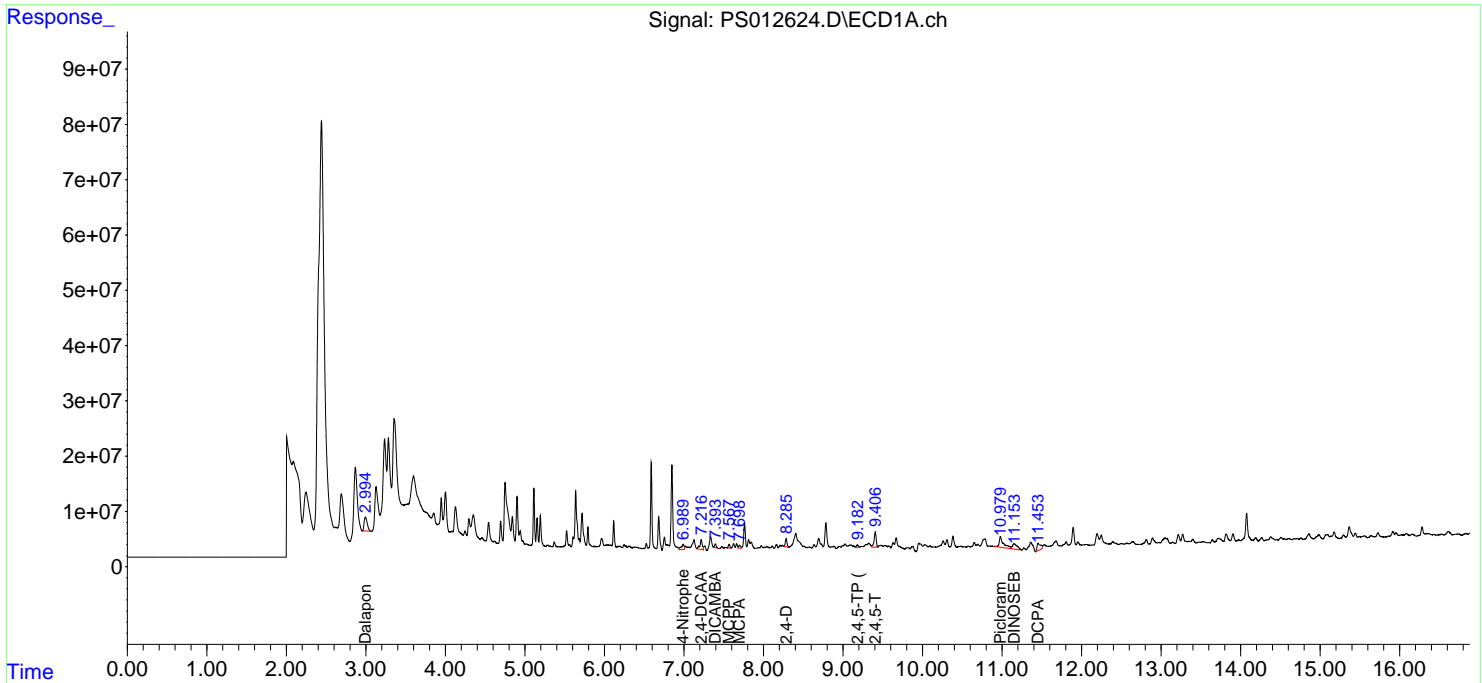
(f)=RT Delta > 1/2 Window (#)=Amounts differ by > 25% (m)=manual int.

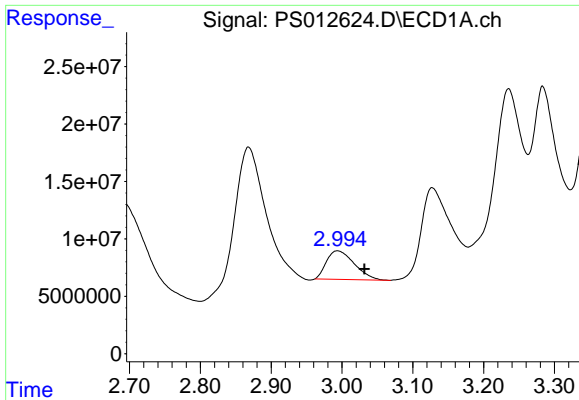
Data Path : Z:\pestpcbsrv\HPCHEM1\ECD_S\Data\PS100520\
 Data File : PS012624.D
 Signal(s) : Signal #1: ECD1A.ch Signal #2: ECD2B.ch
 Acq On : 05 Oct 2020 15:19
 Operator : DD\AJ
 Sample : L3872-13
 Misc :
 ALS Vial : 6 Sample Multiplier: 1

Instrument :
 ECD_S
 ClientSampled :

Integration File signal 1: autoint1.e
 Integration File signal 2: autoint2.e
 Quant Time: Oct 05 16:17:50 2020
 Quant Method : Z:\pestpcbsrv\HPCHEM1\ECD_S\Method\PS092220.M
 Quant Title : 8080.M
 QLast Update : Wed Sep 23 04:57:25 2020
 Response via : Initial Calibration
 Integrator: ChemStation

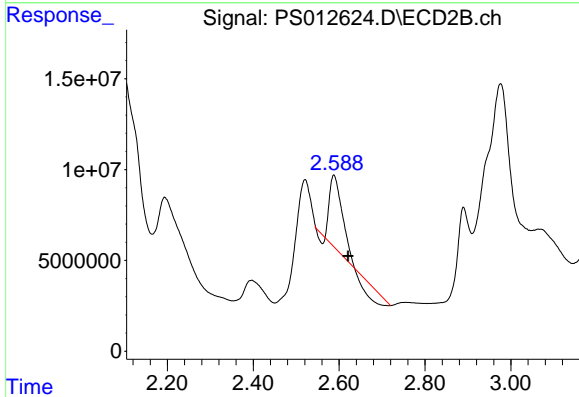
Volume Inj. : 2 µl
 Signal #1 Phase : Rtx-CLPesticides Signal #2 Phase: Rtx-CLPesticides2
 Signal #1 Info : 30M x 0.32mm x0.5 Signal #2 Info : 30M x 0.32mm x 0.25µm



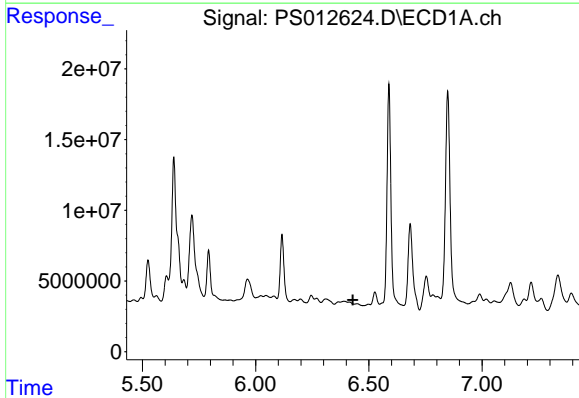


#1 Dalapon
 R.T.: 2.994 min
 Delta R.T.: -0.038 min
 Response: 68198805
 Conc: 60.01 ng/ml

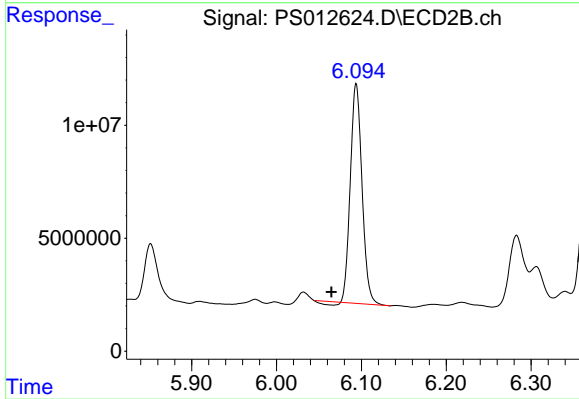
Instrument :
 ECD_S
 ClientSampleId :



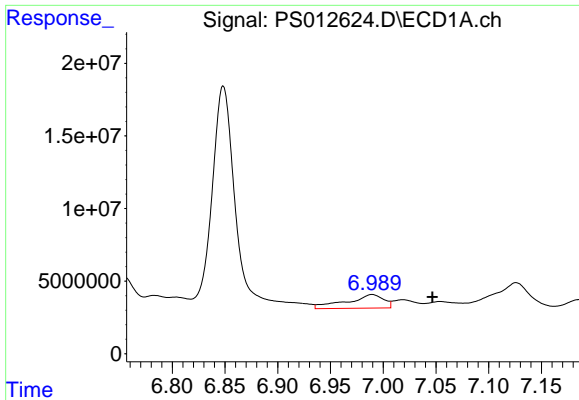
#1 Dalapon
 R.T.: 2.588 min
 Delta R.T.: -0.033 min
 Response: 56146771
 Conc: 93.86 ng/ml



#2 3,5-DICHLOROBENZOIC ACID
 R.T.: 0.000 min
 Exp R.T. : 6.430 min
 Response: 0
 Conc: N.D.

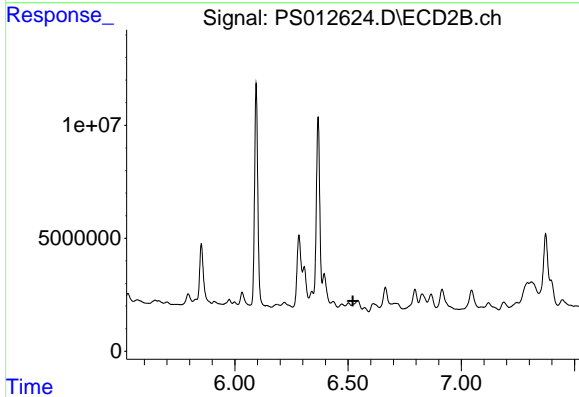


#2 3,5-DICHLOROBENZOIC ACID
 R.T.: 6.094 min
 Delta R.T.: 0.029 min
 Response: 92547272
 Conc: 129.81 ng/ml

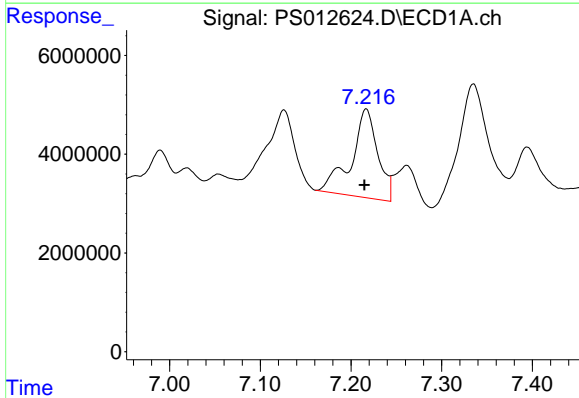


#3 4-Nitrophenol
 R.T.: 6.989 min
 Delta R.T.: -0.057 min
 Response: 22797397
 Conc: 46.88 ng/ml

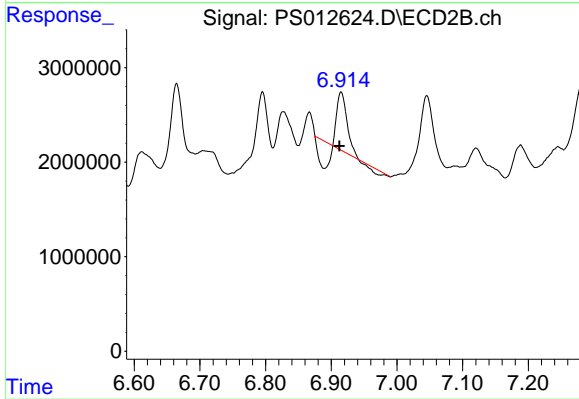
Instrument :
 ECD_S
 ClientSampleId :



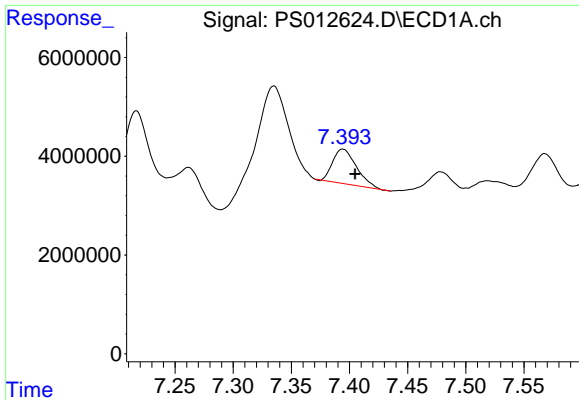
#3 4-Nitrophenol
 R.T.: 0.000 min
 Exp R.T. : 6.522 min
 Response: 0
 Conc: N.D.



#4 2,4-DCAA
 R.T.: 7.217 min
 Delta R.T.: 0.002 min
 Response: 36429876
 Conc: 37.19 ng/ml



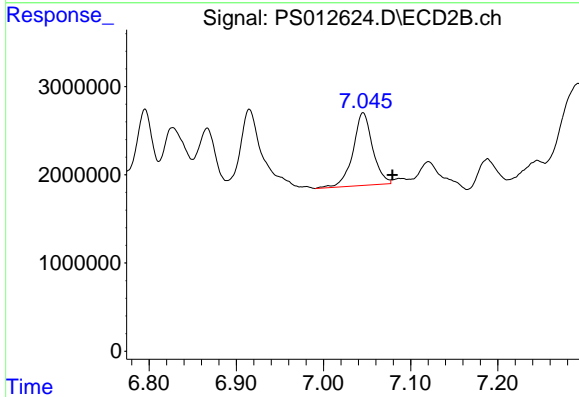
#4 2,4-DCAA
 R.T.: 6.915 min
 Delta R.T.: 0.003 min
 Response: 2799931
 Conc: 6.09 ng/ml



#5 DICAMBA

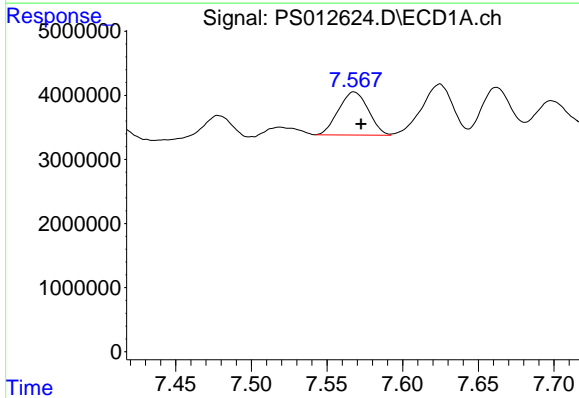
R.T.: 7.394 min
 Delta R.T.: -0.010 min
 Response: 9924438
 Conc: 2.57 ng/ml

Instrument :
 ECD_S
 ClientSampleId :



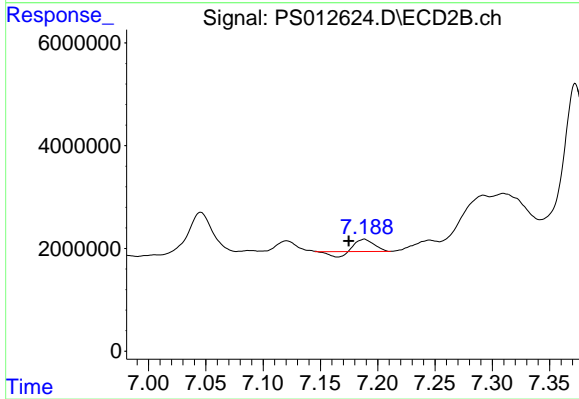
#5 DICAMBA

R.T.: 7.046 min
 Delta R.T.: -0.034 min
 Response: 12884324
 Conc: 6.76 ng/ml



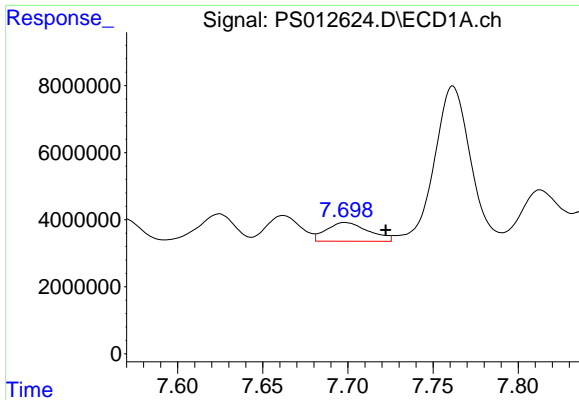
#6 MCPP

R.T.: 7.568 min
 Delta R.T.: -0.005 min
 Response: 9229518
 Conc: 3.16 ug/ml



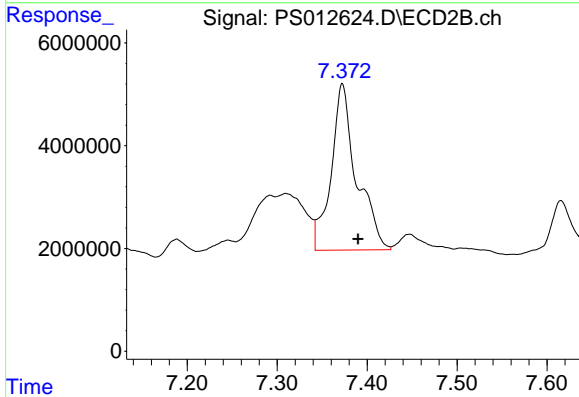
#6 MCPP

R.T.: 7.188 min
 Delta R.T.: 0.014 min
 Response: 1902149
 Conc: 1.26 ug/ml

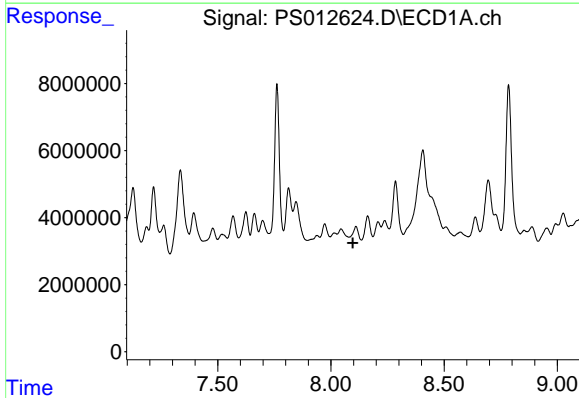


#7 MCPA
 R.T.: 7.699 min
 Delta R.T.: -0.024 min
 Response: 9641547
 Conc: 2.31 ug/ml

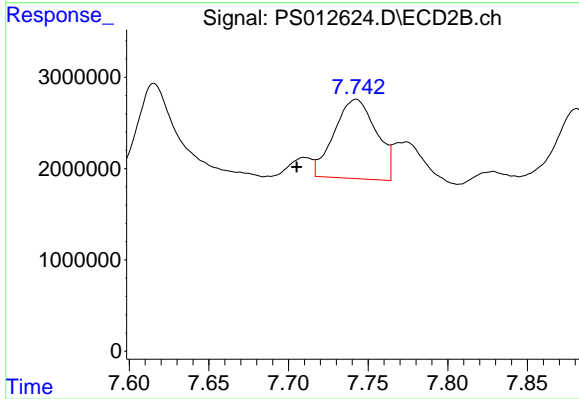
Instrument :
 ECD_S
 ClientSampled :



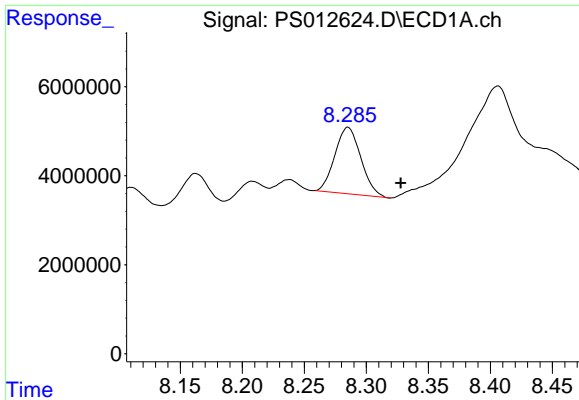
#7 MCPA
 R.T.: 7.372 min
 Delta R.T.: -0.017 min
 Response: 63491395
 Conc: 26.48 ug/ml



#8 DICHLORPROP
 R.T.: 0.000 min
 Exp R.T. : 8.097 min
 Response: 0
 Conc: N.D.

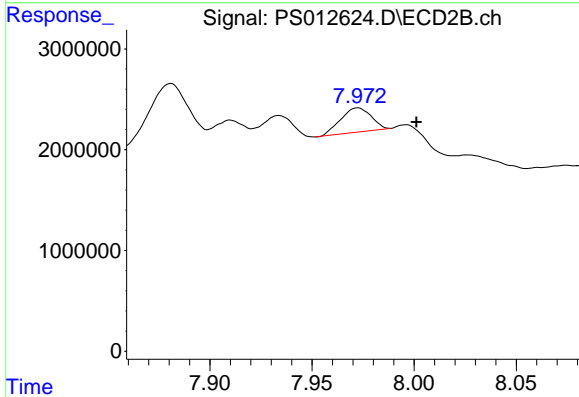


#8 DICHLORPROP
 R.T.: 7.742 min
 Delta R.T.: 0.037 min
 Response: 15986711
 Conc: 30.96 ng/ml

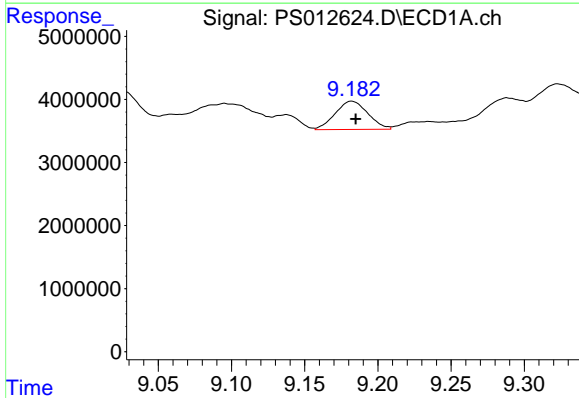


#9 2,4-D
 R.T.: 8.285 min
 Delta R.T.: -0.043 min
 Response: 21755554
 Conc: 19.16 ng/ml

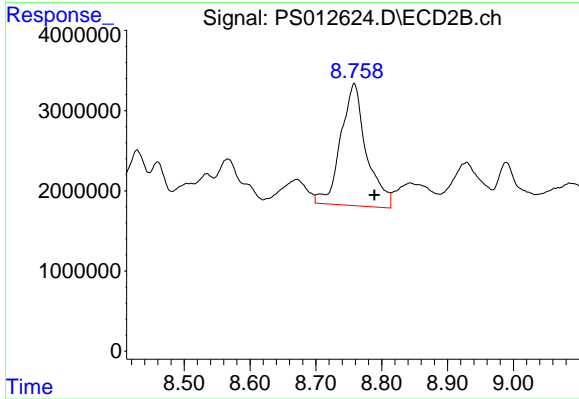
Instrument :
 ECD_S
 ClientSampleId :



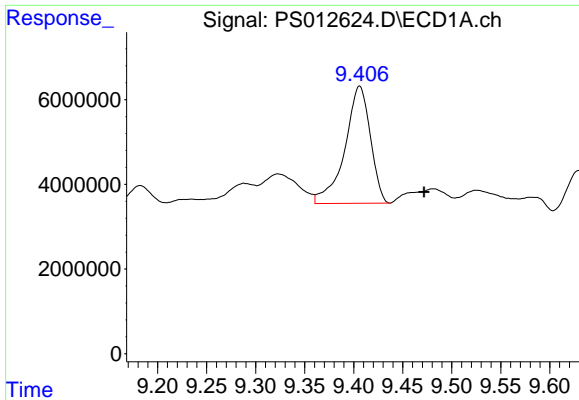
#9 2,4-D
 R.T.: 7.972 min
 Delta R.T.: -0.029 min
 Response: 2496145
 Conc: 3.99 ng/ml



#11 2,4,5-TP (SILVEX)
 R.T.: 9.182 min
 Delta R.T.: -0.003 min
 Response: 6984071
 Conc: 1.26 ng/ml



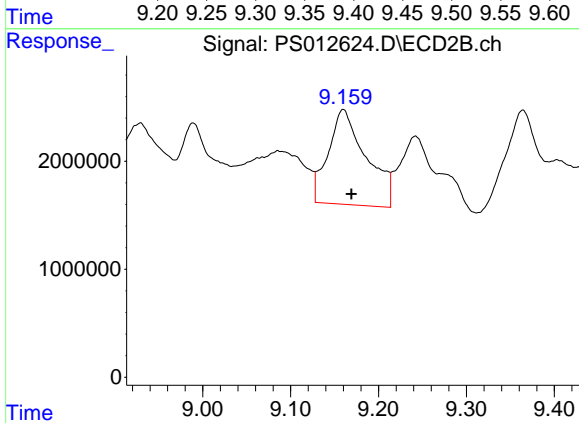
#11 2,4,5-TP (SILVEX)
 R.T.: 8.758 min
 Delta R.T.: -0.030 min
 Response: 41273857
 Conc: 15.64 ng/ml



#12 2,4,5-T

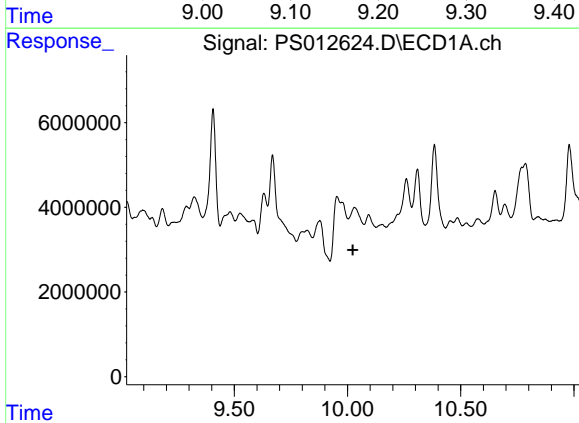
R.T.: 9.406 min
 Delta R.T.: -0.066 min
 Response: 50127269
 Conc: 8.92 ng/ml

Instrument :
 ECD_S
 ClientSampleId :



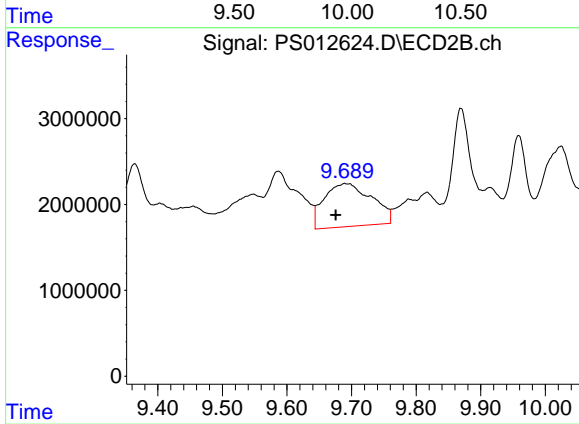
#12 2,4,5-T

R.T.: 9.160 min
 Delta R.T.: -0.009 min
 Response: 26483449
 Conc: 10.30 ng/ml



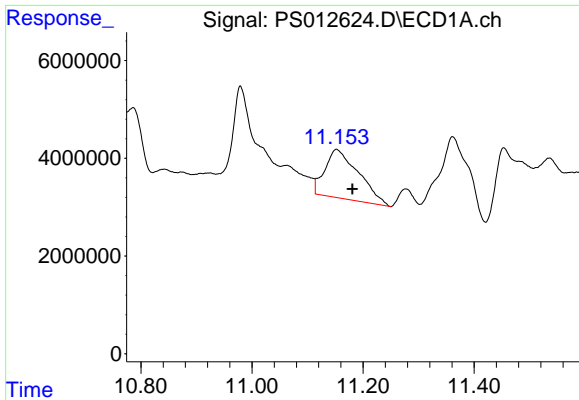
#13 2,4-DB

R.T.: 0.000 min
 Exp R.T. : 10.024 min
 Response: 0
 Conc: N.D.



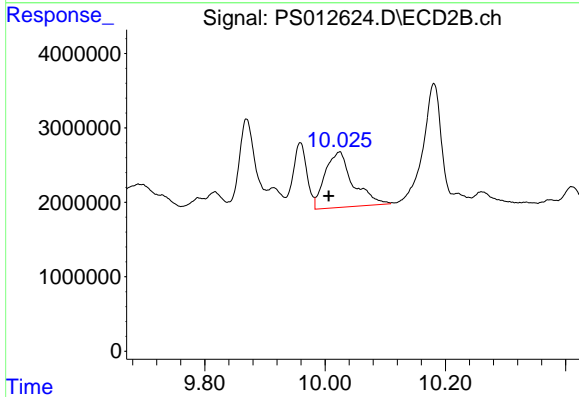
#13 2,4-DB

R.T.: 9.689 min
 Delta R.T.: 0.014 min
 Response: 25683805
 Conc: 68.61 ng/ml

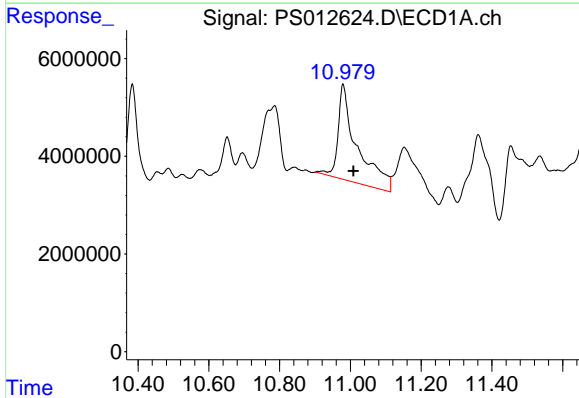


#14 DINOSEB
 R.T.: 11.152 min
 Delta R.T.: -0.029 min
 Response: 41886252
 Conc: 9.23 ng/ml

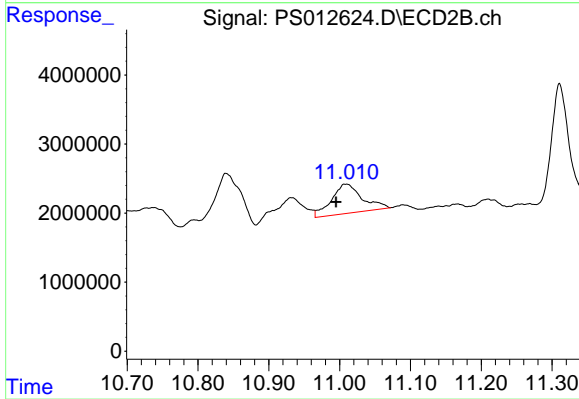
Instrument :
 ECD_S
 ClientSampled :



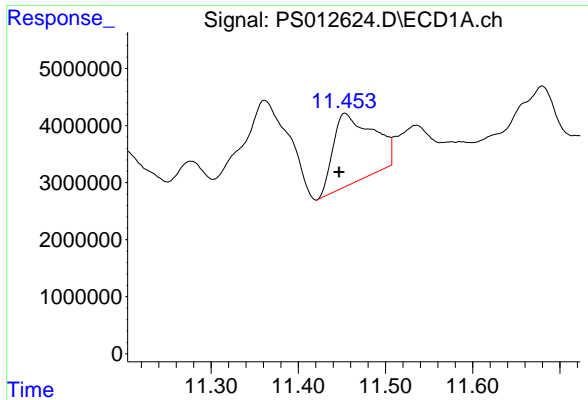
#14 DINOSEB
 R.T.: 10.024 min
 Delta R.T.: 0.018 min
 Response: 24093652
 Conc: 12.58 ng/ml



#15 Picloram
 R.T.: 10.979 min
 Delta R.T.: -0.029 min
 Response: 72533405
 Conc: 10.07 ng/ml



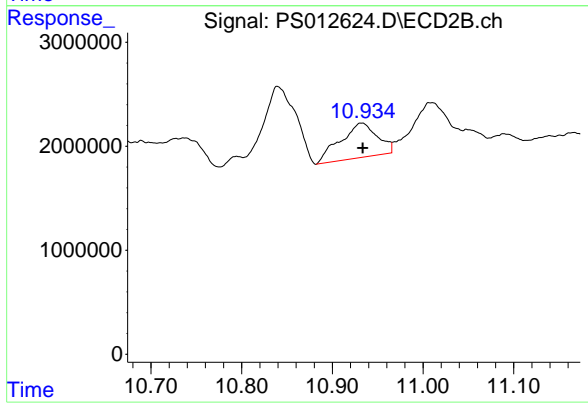
#15 Picloram
 R.T.: 11.010 min
 Delta R.T.: 0.015 min
 Response: 12740866
 Conc: 3.23 ng/ml



#16 DCPA

R.T.: 11.454 min
Delta R.T.: 0.007 min
Response: 38951563
Conc: 5.51 ng/ml

Instrument :
ECD_S
ClientSampleId :



#16 DCPA

R.T.: 10.932 min
Delta R.T.: -0.001 min
Response: 9408859
Conc: 2.83 ng/ml