

Data Path : Z:\pestpcbsrv\HPCHEM1\ECD_S\Data\PS100719\
 Data File : PS007069.D
 Signal(s) : Signal #1: ECD1A.ch Signal #2: ECD2B.ch
 Acq On : 07 Oct 2019 08:53
 Operator : SM\AJ
 Sample : I.BLK
 Misc :
 ALS Vial : 2 Sample Multiplier: 1

Instrument :
 ECD_S
 ClientSampled :
 I.BLK

Manual Integrations
 APPROVED

Ankita
 10/8/2019 11:52:09 AM

Integration File signal 1: autoint1.e
 Integration File signal 2: autoint2.e
 Quant Time: Oct 07 15:26:42 2019
 Quant Method : Z:\pestpcbsrv\HPCHEM1\ECD_S\Method\PS092019.M
 Quant Title : 8080.M
 QLast Update : Fri Sep 20 11:14:00 2019
 Response via : Initial Calibration
 Integrator: ChemStation

Volume Inj. : 2 µl
 Signal #1 Phase : Rtx-CLPesticides Signal #2 Phase: Rtx-CLPesticides2
 Signal #1 Info : 30M x 0.32mm x0.5 Signal #2 Info : 30M x 0.32mm x 0.25µm

Compound	RT#1	RT#2	Resp#1	Resp#2	ng/ml	ng/ml
----------	------	------	--------	--------	-------	-------

 System Monitoring Compounds

4) S	2,4-DCAA	5.520	5.247	351.6E6	173.7E6	384.733	377.671m
------	----------	-------	-------	---------	---------	---------	----------

Target Compounds

(f)=RT Delta > 1/2 Window (#)=Amounts differ by > 25% (m)=manual int.

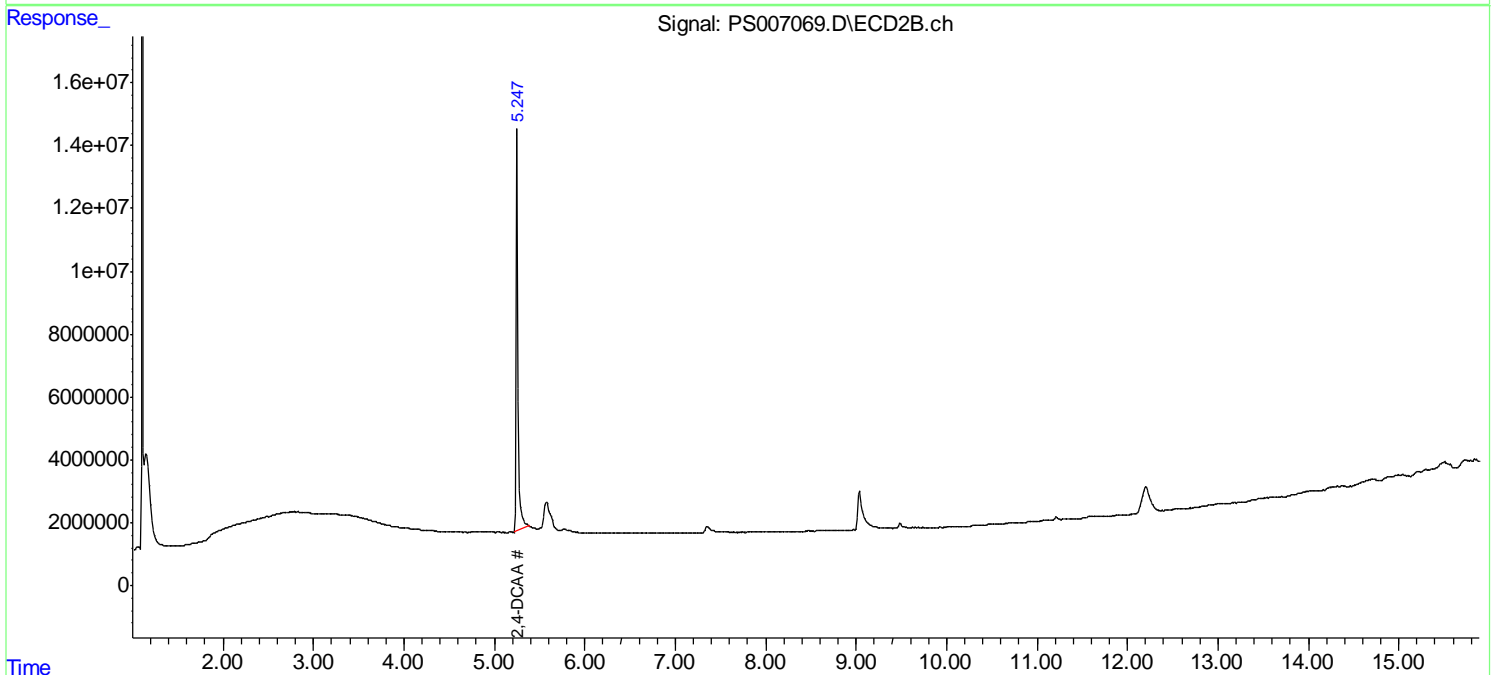
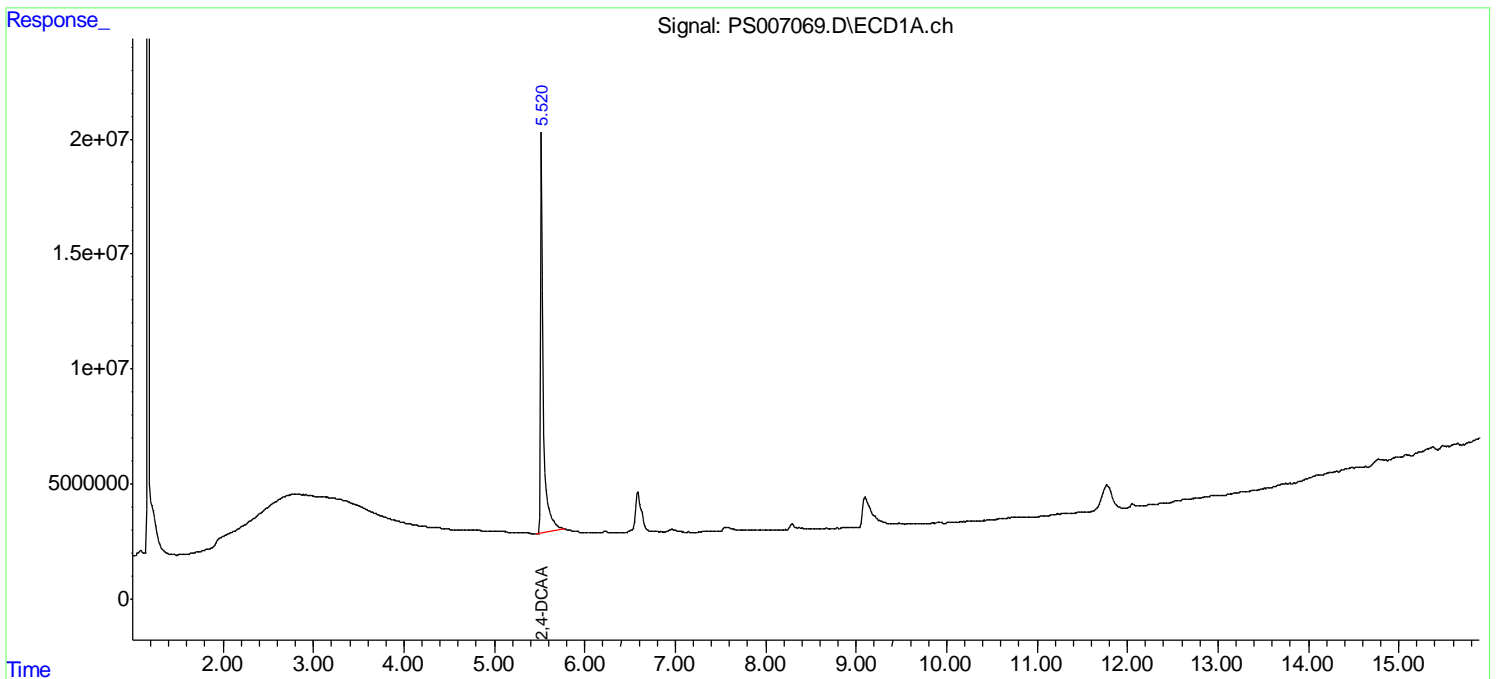
Data Path : Z:\pestpcbsrv\HPCHEM1\ECD_S\Data\PS100719\
 Data File : PS007069.D
 Signal(s) : Signal #1: ECD1A.ch Signal #2: ECD2B.ch
 Acq On : 07 Oct 2019 08:53
 Operator : SM\AJ
 Sample : I.BLK
 Misc :
 ALS Vial : 2 Sample Multiplier: 1

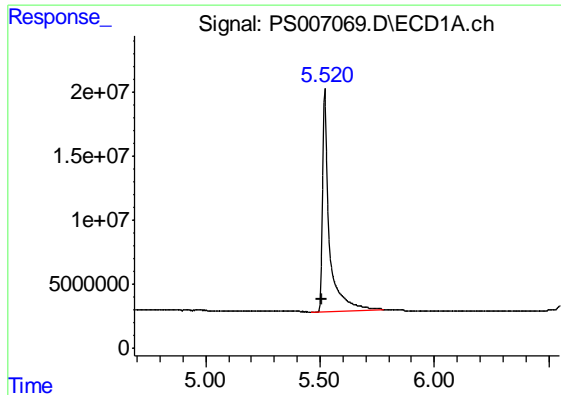
Instrument :
 ECD_S
ClientSampled :
 I.BLK

Manual Integrations
APPROVED
 Ankita
 10/8/2019 11:52:09 AM

Integration File signal 1: autoint1.e
 Integration File signal 2: autoint2.e
 Quant Time: Oct 07 15:26:42 2019
 Quant Method : Z:\pestpcbsrv\HPCHEM1\ECD_S\Method\PS092019.M
 Quant Title : 8080.M
 QLast Update : Fri Sep 20 11:14:00 2019
 Response via : Initial Calibration
 Integrator: ChemStation

Volume Inj. : 2 µl
 Signal #1 Phase : Rtx-CLPesticides Signal #2 Phase: Rtx-CLPesticides2
 Signal #1 Info : 30M x 0.32mm x0.5 Signal #2 Info : 30M x 0.32mm x 0.25µm





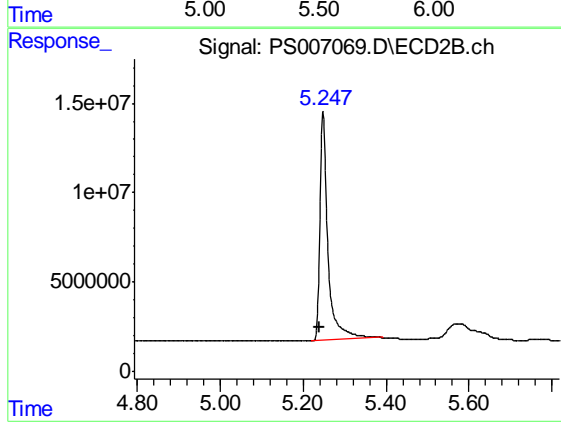
#4 2,4-DCAA

R.T.: 5.520 min
Delta R.T.: 0.012 min
Response: 351574297
Conc: 384.73 ng/ml

Instrument :
ECD_S
ClientSampled :
I.BLK

Manual Integrations
APPROVED

Ankita
10/8/2019 11:52:09 AM



#4 2,4-DCAA

R.T.: 5.247 min
Delta R.T.: 0.009 min
Response: 173668880
Conc: 377.67 ng/ml m