

Data Path : Z:\pestpcbsrv\HPCHEM1\ECD_S\Data\PS100724\
 Data File : PS027858.D
 Signal(s) : Signal #1: ECD1A.ch Signal #2: ECD2B.ch
 Acq On : 07 Oct 2024 12:23
 Operator : AR\AJ
 Sample : HSTDICC1000
 Misc :
 ALS Vial : 6 Sample Multiplier: 1

Instrument :
 ECD_S
 ClientSampleId :
 HSTDICC1000

Integration File signal 1: autoint1.e
 Integration File signal 2: autoint2.e
 Quant Time: Oct 07 13:41:36 2024
 Quant Method : Z:\pestpcbsrv\HPCHEM1\ECD_S\Method\PS100724.M
 Quant Title : 8080.M
 QLast Update : Mon Oct 07 13:36:52 2024
 Response via : Initial Calibration
 Integrator: ChemStation

Volume Inj. : 1 µl
 Signal #1 Phase : ZB-MR2 Signal #2 Phase: ZB-MR2
 Signal #1 Info : 30M x 0.32mm x0.5 Signal #2 Info : 30M x 0.32mm x 0.25µm

Compound	RT#1	RT#2	Resp#1	Resp#2	ng/ml	ng/ml

System Monitoring Compounds						
4) S 2,4-DCAA	7.098	7.627	2837.5E6	920.3E6	1135.159	951.218
Target Compounds						
1) T Dalapon	2.545	2.627	3872.4E6	1568.2E6	907.444	933.032
2) T 3,5-DICHL...	6.289	6.599	3439.2E6	1093.7E6	925.832	834.121
3) T 4-Nitroph...	6.893	7.162	1541.7E6	551.0E6	901.292	883.174
5) T DICAMBA	7.277	7.822	9724.5E6	3061.9E6	934.785	871.486
6) T MCPP	7.458	7.927	696.2E6	233.0E6	90.893	83.612
7) T MCPA	7.603	8.167	967.9E6	385.7E6	92.615	86.854
8) T DICHLORPROP	7.962	8.528	2508.6E6	796.2E6	938.240	834.455
9) T 2,4-D	8.185	8.854	2931.0E6	808.3E6	937.036	834.299
10) T Pentachlo...	8.471	9.367	34157.9E6	11929.1E6	965.502	871.224
11) T 2,4,5-TP ...	9.037	9.745	14117.8E6	4301.5E6	948.502	860.767
12) T 2,4,5-T	9.322	10.159	14471.8E6	3647.7E6	947.291	835.145
13) T 2,4-DB	9.885	10.721	2347.1E6	419.6E6	945.826	840.299
14) T DINOSEB	11.062	11.095	9114.3E6	2894.9E6	928.647	857.789
15) T Picloram	10.878	12.170	19335.6E6	4008.9E6	945.622	882.044
16) T DCPA	11.361	12.128	16083.9E6	4305.4E6	956.023	928.640

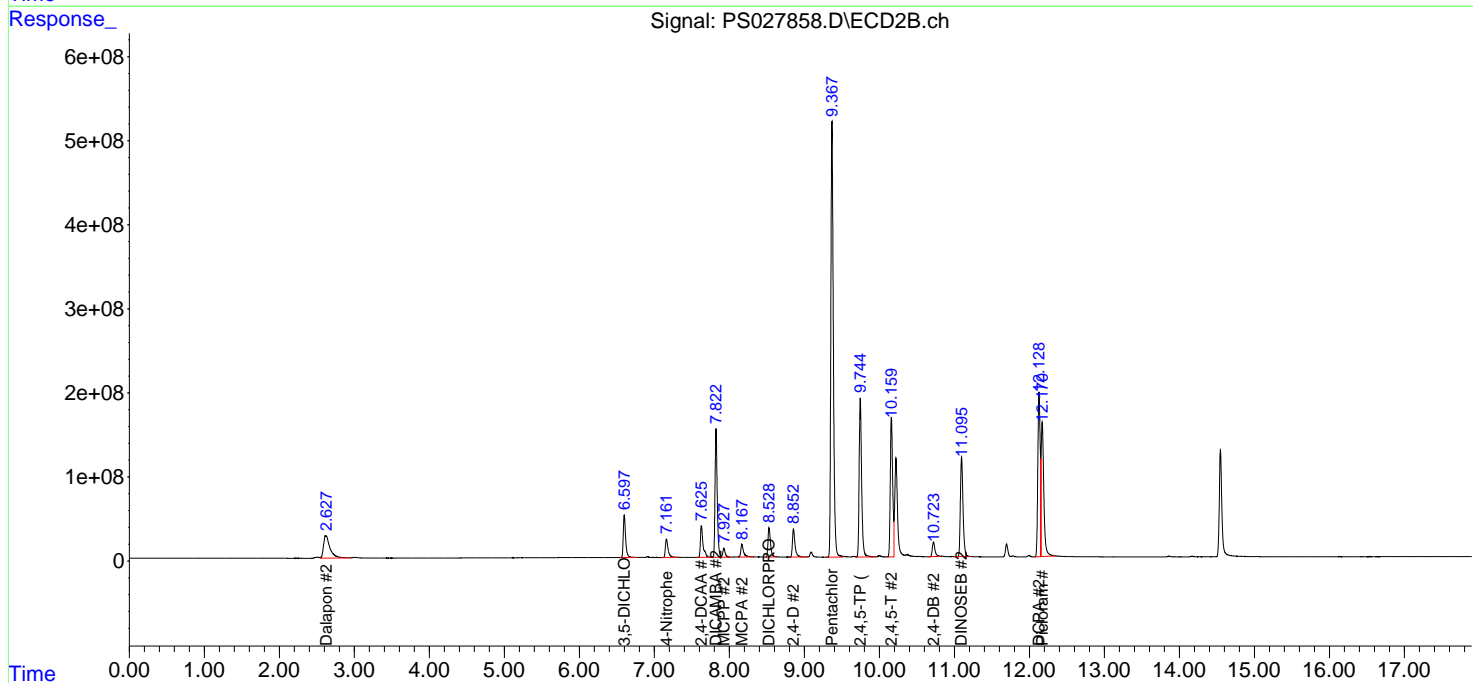
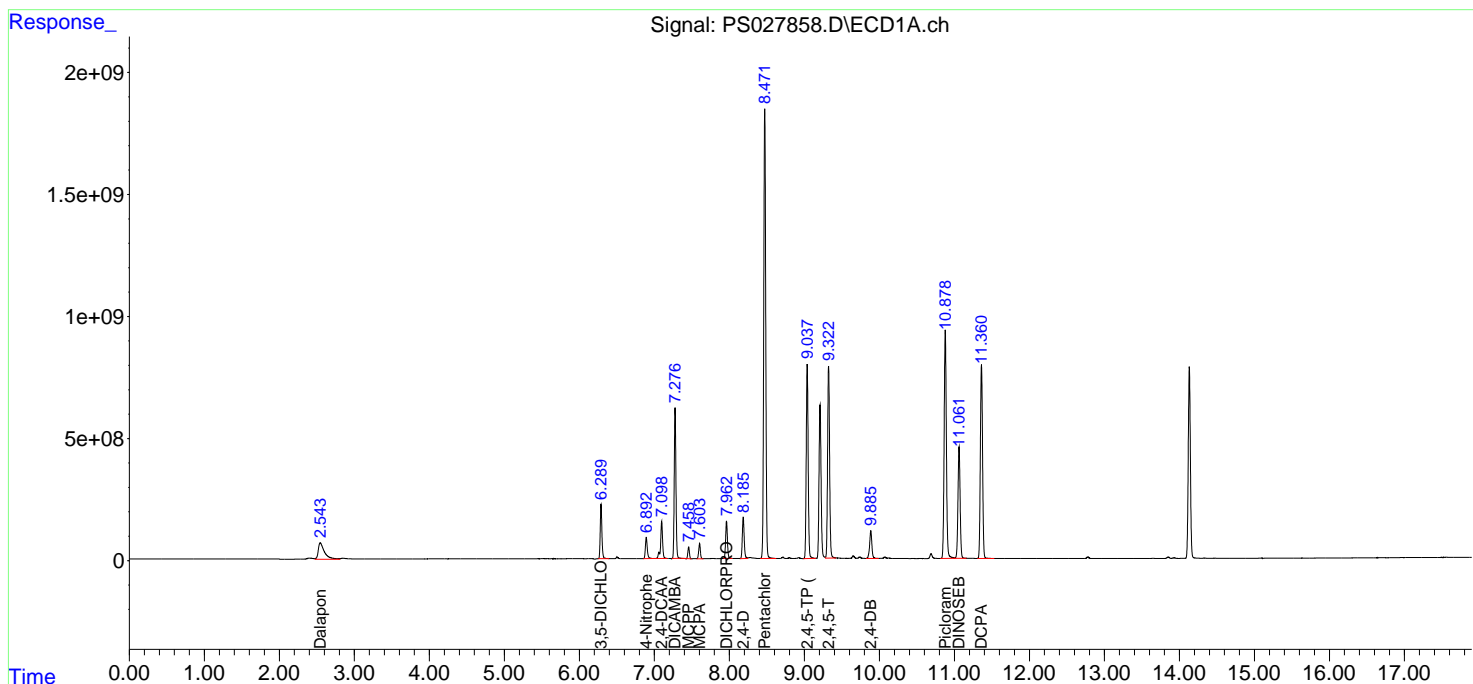
(f)=RT Delta > 1/2 Window (#)=Amounts differ by > 25% (m)=manual int.

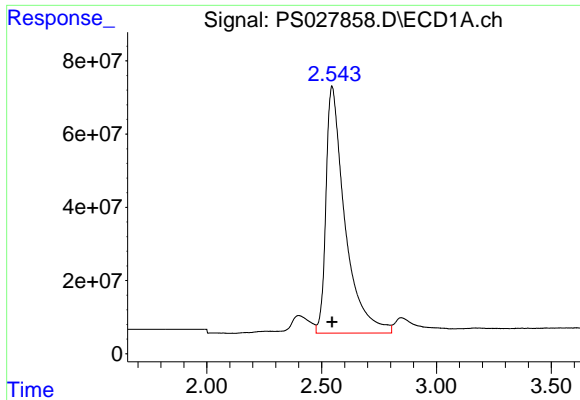
Data Path : Z:\pestpcbsrv\HPCHEM1\ECD_S\Data\PS100724\
 Data File : PS027858.D
 Signal(s) : Signal #1: ECD1A.ch Signal #2: ECD2B.ch
 Acq On : 07 Oct 2024 12:23
 Operator : AR\AJ
 Sample : HSTDICC1000
 Misc :
 ALS Vial : 6 Sample Multiplier: 1

Instrument :
 ECD_S
 ClientSampleId :
 HSTDICC1000

Integration File signal 1: autoint1.e
 Integration File signal 2: autoint2.e
 Quant Time: Oct 07 13:41:36 2024
 Quant Method : Z:\pestpcbsrv\HPCHEM1\ECD_S\Method\PS100724.M
 Quant Title : 8080.M
 QLast Update : Mon Oct 07 13:36:52 2024
 Response via : Initial Calibration
 Integrator: ChemStation

Volume Inj. : 1 µl
 Signal #1 Phase : ZB-MR1 Signal #2 Phase: ZB-MR2
 Signal #1 Info : 30M x 0.32mm x0.5 Signal #2 Info : 30M x 0.32mm x 0.25µm

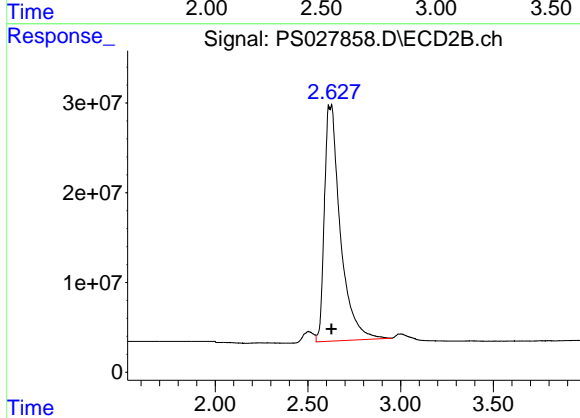




#1 Dalapon

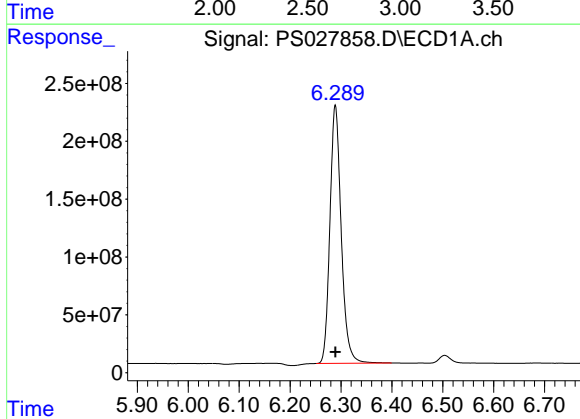
R.T.: 2.545 min
 Delta R.T.: 0.000 min
 Response: 3872366077
 Conc: 907.44 ng/ml

Instrument :
 ECD_S
 ClientSampleId :
 HSTDICC1000



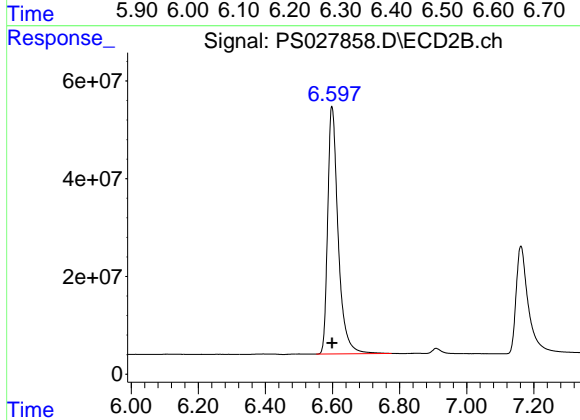
#1 Dalapon

R.T.: 2.627 min
 Delta R.T.: 0.000 min
 Response: 1568197050
 Conc: 933.03 ng/ml



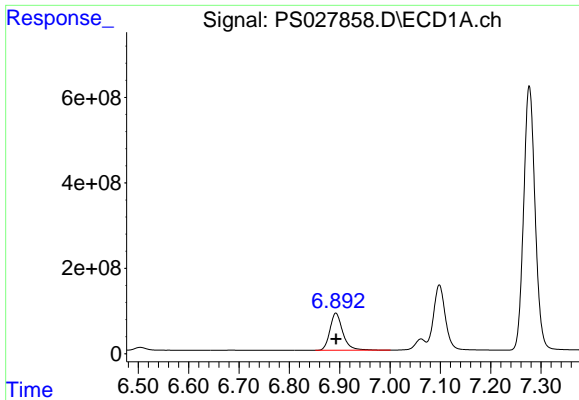
#2 3,5-DICHLOROBENZOIC ACID

R.T.: 6.289 min
 Delta R.T.: 0.000 min
 Response: 3439173541
 Conc: 925.83 ng/ml



#2 3,5-DICHLOROBENZOIC ACID

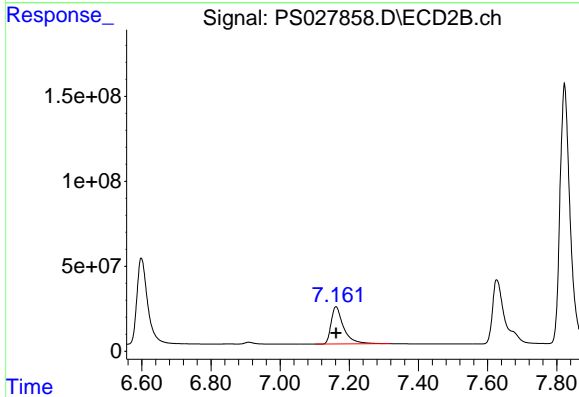
R.T.: 6.599 min
 Delta R.T.: 0.000 min
 Response: 1093670270
 Conc: 834.12 ng/ml



#3 4-Nitrophenol

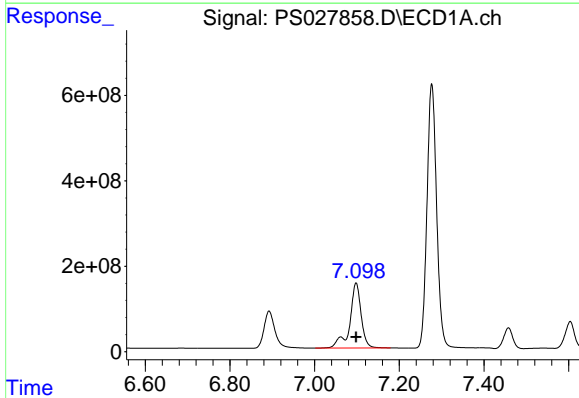
R.T.: 6.893 min
Delta R.T.: 0.000 min
Response: 1541677921
Conc: 901.29 ng/ml

Instrument :
ECD_S
ClientSampleId :
HSTDICC1000



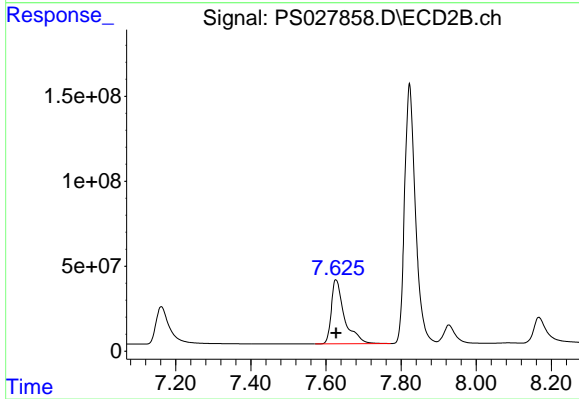
#3 4-Nitrophenol

R.T.: 7.162 min
Delta R.T.: 0.000 min
Response: 550988098
Conc: 883.17 ng/ml



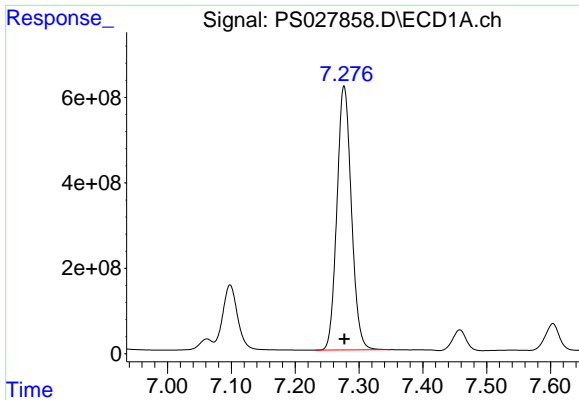
#4 2,4-DCAA

R.T.: 7.098 min
Delta R.T.: 0.000 min
Response: 2837474668
Conc: 1135.16 ng/ml



#4 2,4-DCAA

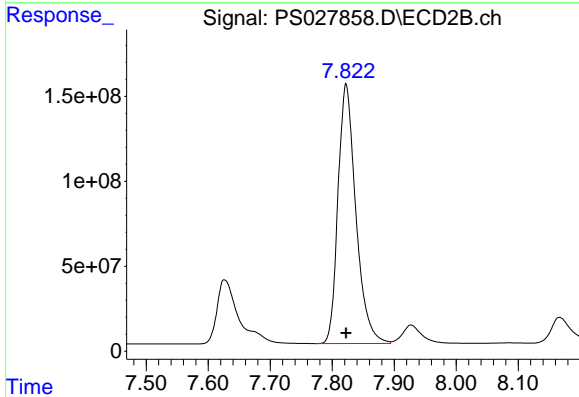
R.T.: 7.627 min
Delta R.T.: 0.000 min
Response: 920327581
Conc: 951.22 ng/ml



#5 DICAMBA

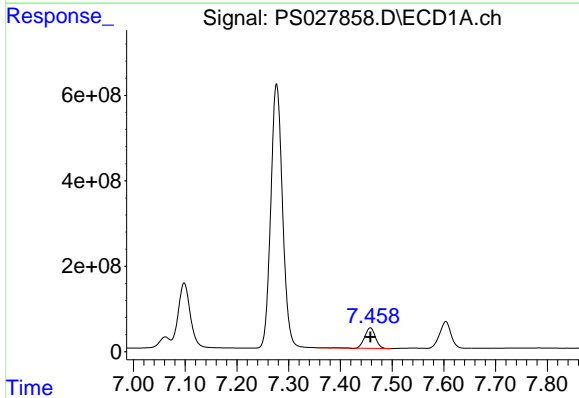
R.T.: 7.277 min
 Delta R.T.: 0.000 min
 Response: 9724480885
 Conc: 934.78 ng/ml

Instrument :
 ECD_S
 ClientSampleId :
 HSTDICC1000



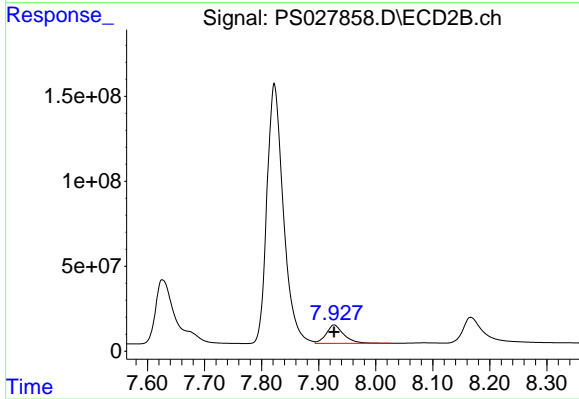
#5 DICAMBA

R.T.: 7.822 min
 Delta R.T.: 0.000 min
 Response: 3061918031
 Conc: 871.49 ng/ml



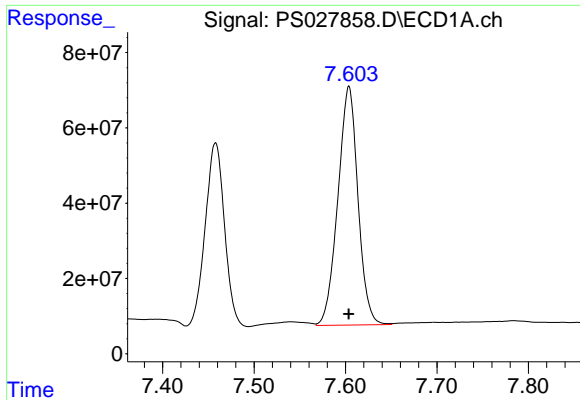
#6 MCP

R.T.: 7.458 min
 Delta R.T.: 0.000 min
 Response: 696161083
 Conc: 90.89 ug/ml



#6 MCP

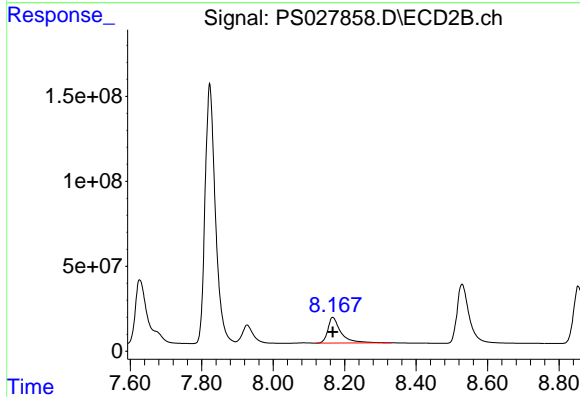
R.T.: 7.927 min
 Delta R.T.: 0.000 min
 Response: 232987994
 Conc: 83.61 ug/ml



#7 MCPA

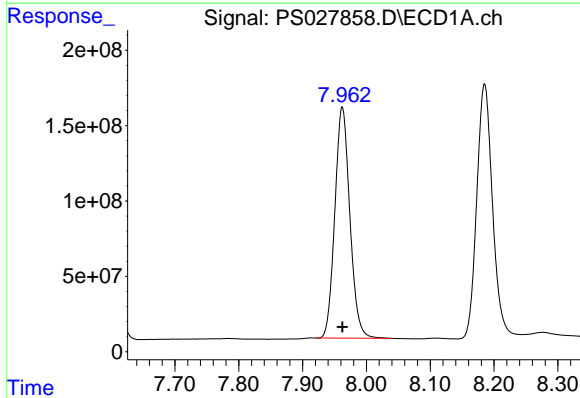
R.T.: 7.603 min
 Delta R.T.: 0.000 min
 Response: 967896425
 Conc: 92.62 ug/ml

Instrument :
 ECD_S
 ClientSampleId :
 HSTDICC1000



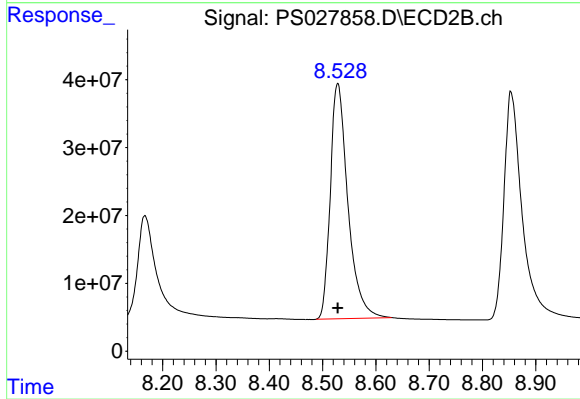
#7 MCPA

R.T.: 8.167 min
 Delta R.T.: 0.000 min
 Response: 385737876
 Conc: 86.85 ug/ml



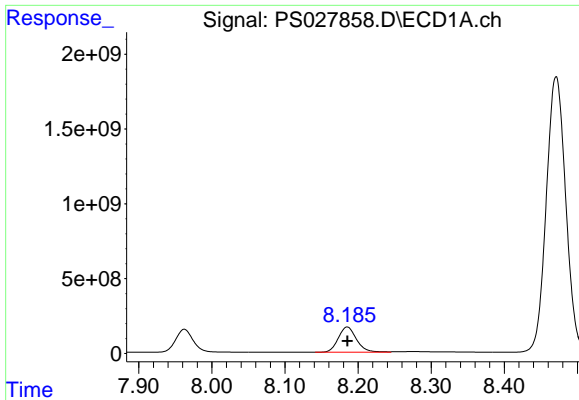
#8 DICHLORPROP

R.T.: 7.962 min
 Delta R.T.: 0.000 min
 Response: 2508563918
 Conc: 938.24 ng/ml



#8 DICHLORPROP

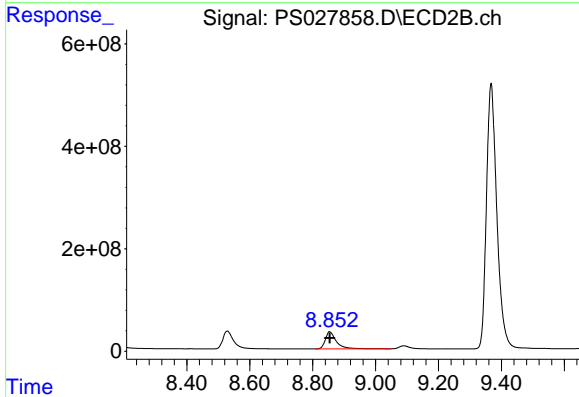
R.T.: 8.528 min
 Delta R.T.: 0.000 min
 Response: 796210254
 Conc: 834.45 ng/ml



#9 2,4-D

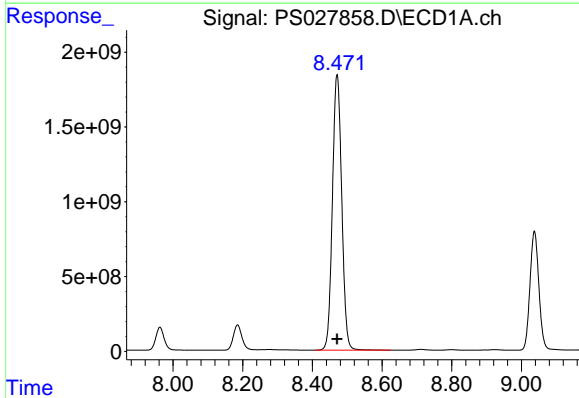
R.T.: 8.185 min
 Delta R.T.: 0.000 min
 Response: 2930964614
 Conc: 937.04 ng/ml

Instrument :
 ECD_S
 ClientSampleId :
 HSTDICC1000



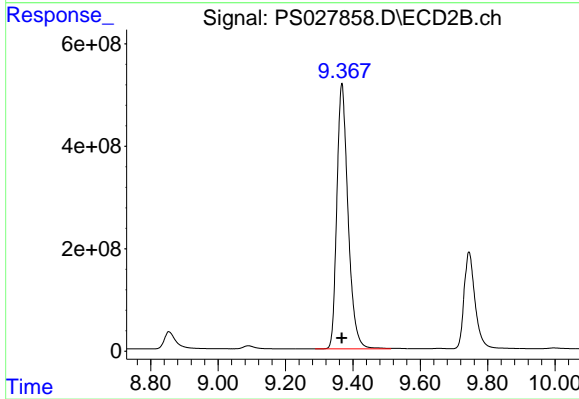
#9 2,4-D

R.T.: 8.854 min
 Delta R.T.: 0.000 min
 Response: 808301762
 Conc: 834.30 ng/ml



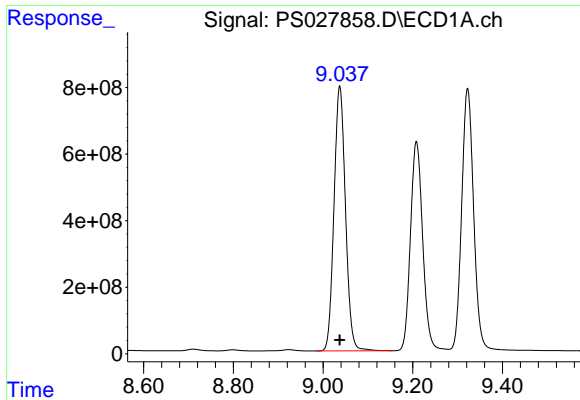
#10 Pentachlorophenol

R.T.: 8.471 min
 Delta R.T.: 0.000 min
 Response: 34157931417
 Conc: 965.50 ng/ml



#10 Pentachlorophenol

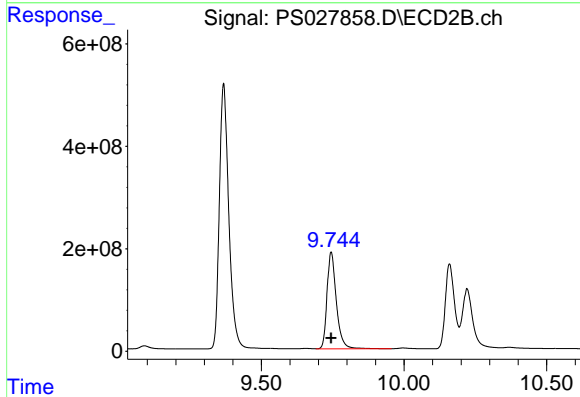
R.T.: 9.367 min
 Delta R.T.: 0.000 min
 Response: 11929062236
 Conc: 871.22 ng/ml



#11 2,4,5-TP (SILVEX)

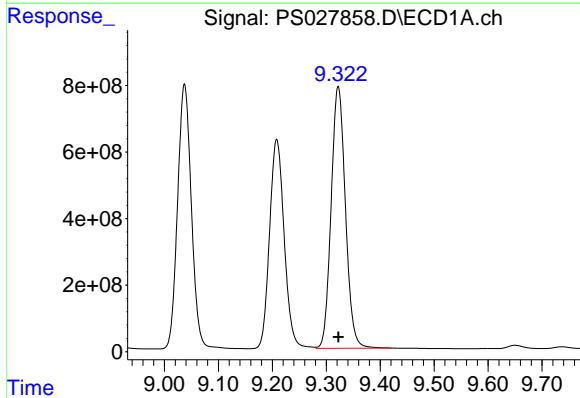
R.T.: 9.037 min
 Delta R.T.: 0.000 min
 Response: 14117754905
 Conc: 948.50 ng/ml

Instrument :
 ECD_S
 ClientSampleId :
 HSTDICC1000



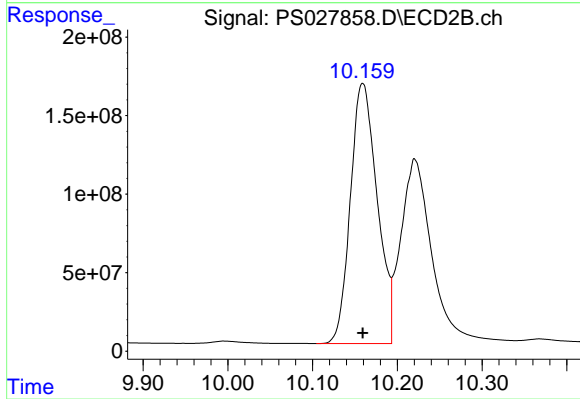
#11 2,4,5-TP (SILVEX)

R.T.: 9.745 min
 Delta R.T.: 0.000 min
 Response: 4301476704
 Conc: 860.77 ng/ml



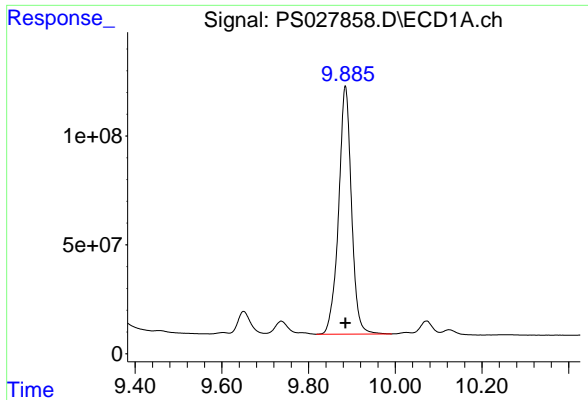
#12 2,4,5-T

R.T.: 9.322 min
 Delta R.T.: 0.000 min
 Response: 14471824552
 Conc: 947.29 ng/ml



#12 2,4,5-T

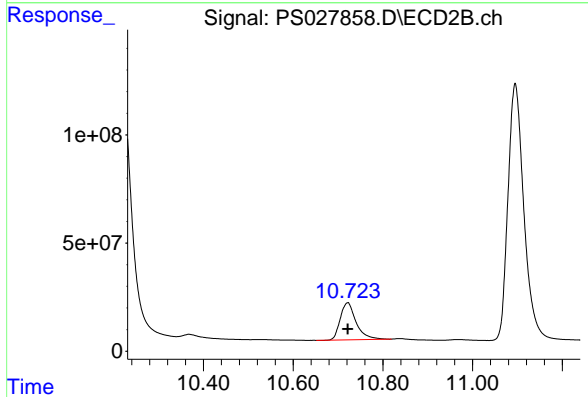
R.T.: 10.159 min
 Delta R.T.: 0.000 min
 Response: 3647749460
 Conc: 835.15 ng/ml



#13 2,4-DB

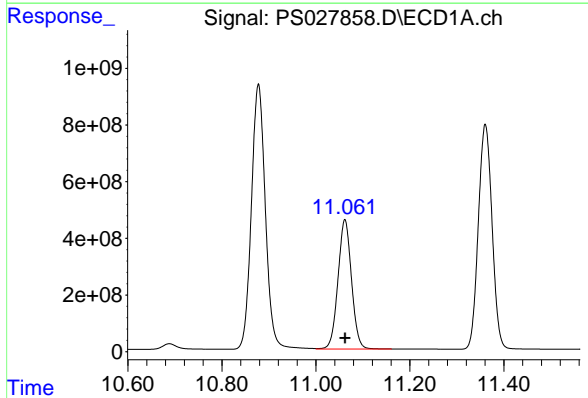
R.T.: 9.885 min
 Delta R.T.: 0.000 min
 Response: 2347052470
 Conc: 945.83 ng/ml

Instrument :
 ECD_S
 ClientSampleId :
 HSTDICC1000



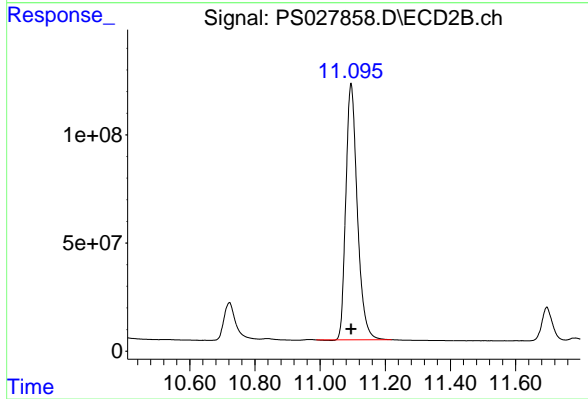
#13 2,4-DB

R.T.: 10.721 min
 Delta R.T.: 0.000 min
 Response: 419581216
 Conc: 840.30 ng/ml



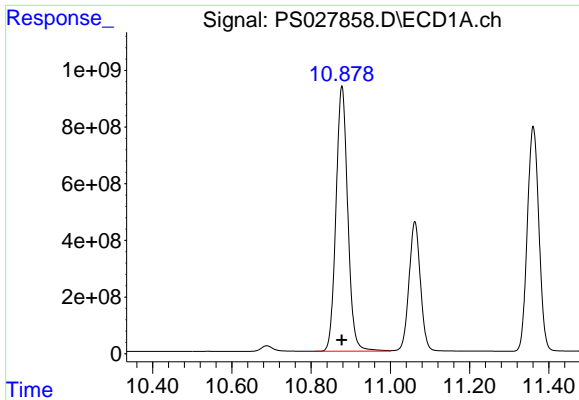
#14 DINOSEB

R.T.: 11.062 min
 Delta R.T.: 0.000 min
 Response: 9114292814
 Conc: 928.65 ng/ml



#14 DINOSEB

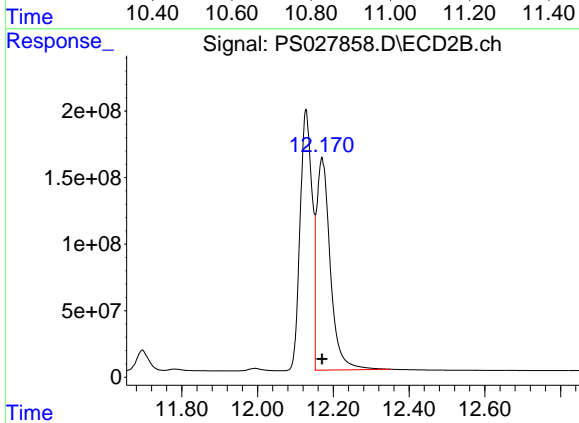
R.T.: 11.095 min
 Delta R.T.: 0.000 min
 Response: 2894938543
 Conc: 857.79 ng/ml



#15 Picloram

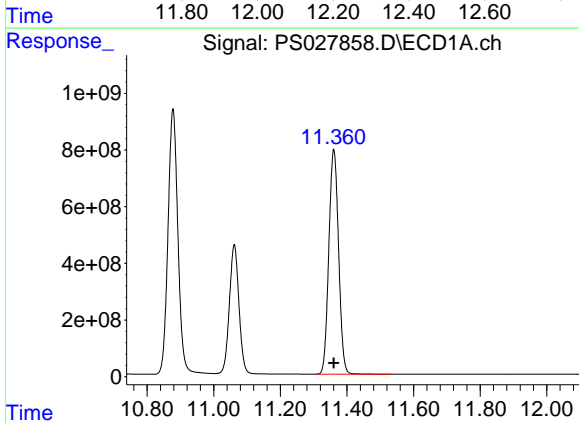
R.T.: 10.878 min
 Delta R.T.: 0.000 min
 Response: 19335553076
 Conc: 945.62 ng/ml

Instrument :
 ECD_S
 ClientSampleId :
 HSTDICC1000



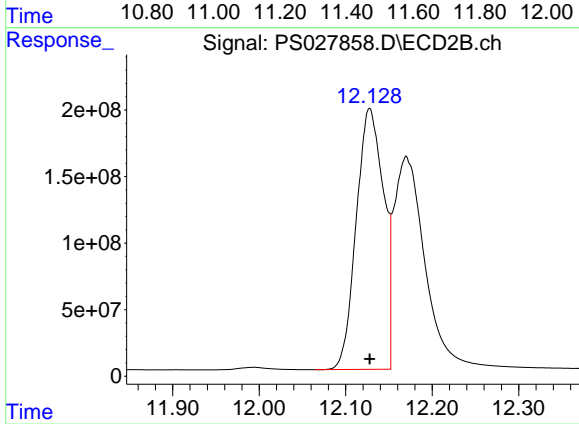
#15 Picloram

R.T.: 12.170 min
 Delta R.T.: 0.000 min
 Response: 4008860822
 Conc: 882.04 ng/ml



#16 DCPA

R.T.: 11.361 min
 Delta R.T.: 0.000 min
 Response: 16083904990
 Conc: 956.02 ng/ml



#16 DCPA

R.T.: 12.128 min
 Delta R.T.: 0.000 min
 Response: 4305377529
 Conc: 928.64 ng/ml