

Data Path : Z:\pestpcbsrv\HPCHEM1\ECD_S\Data\PS100821\
 Data File : PS017028.D
 Signal(s) : Signal #1: ECD1A.ch Signal #2: ECD2B.ch
 Acq On : 08 Oct 2021 11:06
 Operator : DD\AJ
 Sample : M4056-02
 Misc :
 ALS Vial : 7 Sample Multiplier: 1

Instrument :
 ECD_S
 ClientSampleId :

Integration File signal 1: autoint1.e
 Integration File signal 2: autoint2.e
 Quant Time: Oct 09 00:34:54 2021
 Quant Method : Z:\pestpcbsrv\HPCHEM1\ECD_S\Method\PS092021.M
 Quant Title : 8080.M
 QLast Update : Tue Sep 21 01:52:13 2021
 Response via : Initial Calibration
 Integrator: ChemStation

Volume Inj. : 2 µl
 Signal #1 Phase : Rtx-CLPesticides Signal #2 Phase: Rtx-CLPesticides2
 Signal #1 Info : 30M x 0.32mm x0.5 Signal #2 Info : 30M x 0.32mm x 0.25µm

	Compound	RT#1	RT#2	Resp#1	Resp#2	ng/ml	ng/ml

System Monitoring Compounds							
4) S	2,4-DCAA	7.158	6.746	350.3E6	132.4E6	229.929	225.860
Target Compounds							
1) T	Dalapon	2.954f	2.502	35278459	73108480	14.795	100.586 #
2) T	3,5-DICHL...	6.420	5.966	1637692	50711249	<MDL	57.519 #
3) T	4-Nitroph...	7.000	6.419	24878181	24536098	28.719	78.459 #
5) T	DICAMBA	7.359	6.868f	18864973	69689849	3.232	27.357 #
6) T	MCPD	7.555	7.041	307.2E6	11830037	70.907	5.775 #
7) T	MCPA	7.661	7.199	8839008	36432795	1.429	11.964 #
8) T	DICHLORPROP	8.061	7.544	37658579	95443616	25.506	147.171 #
10) T	Pentachlo...	8.591	8.304f	487.1E6	68029560	24.104	8.267 #
11) T	2,4,5-TP ...	9.181f	8.630	730.7E6	37878243	91.501	10.819 #
12) T	2,4,5-T	9.467f	8.990	60518342	47802998	7.332	14.689 #
13) T	2,4-DB	9.997	9.473	83606350	101.3E6	50.578	243.132 #
14) T	DINOSEB	11.070f	9.813	374.7E6	178.0E6	61.505	72.684
16) T	DCPA	11.376	10.735	-6616229	11282766	N.D.	2.588

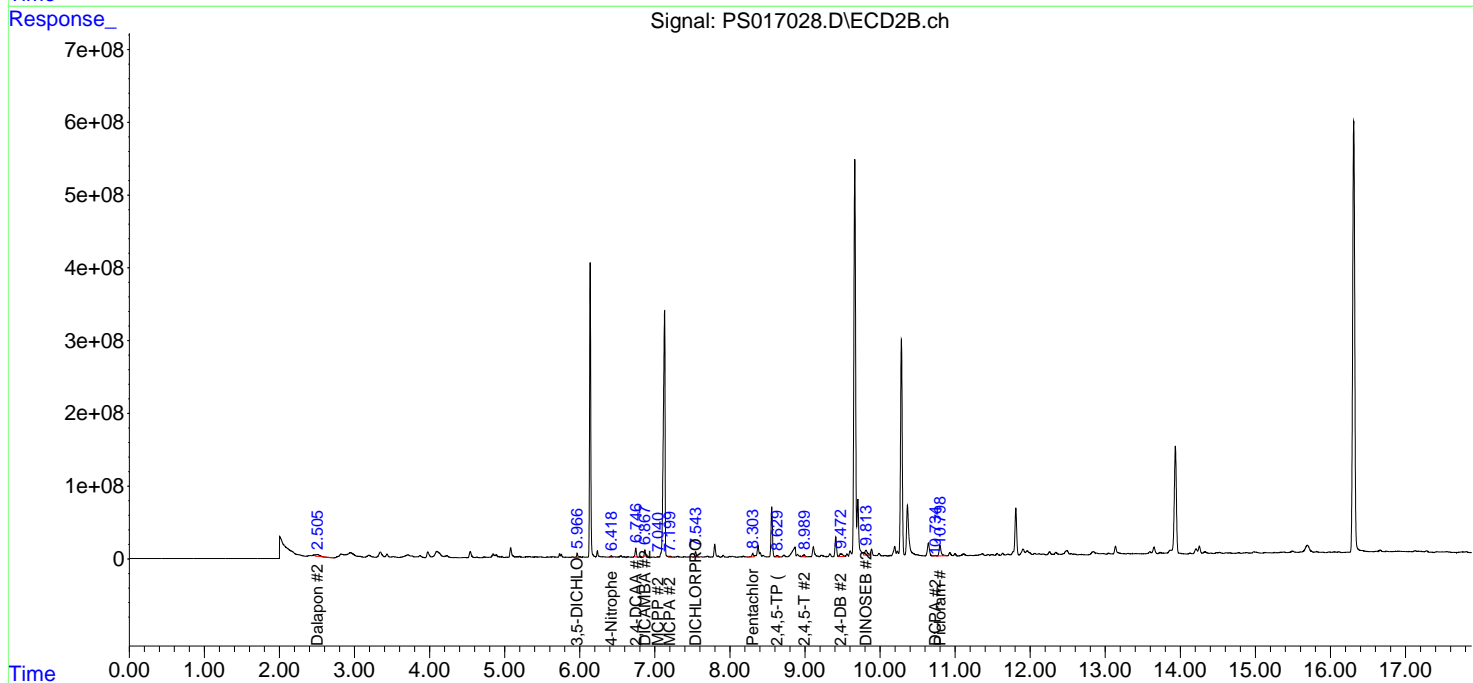
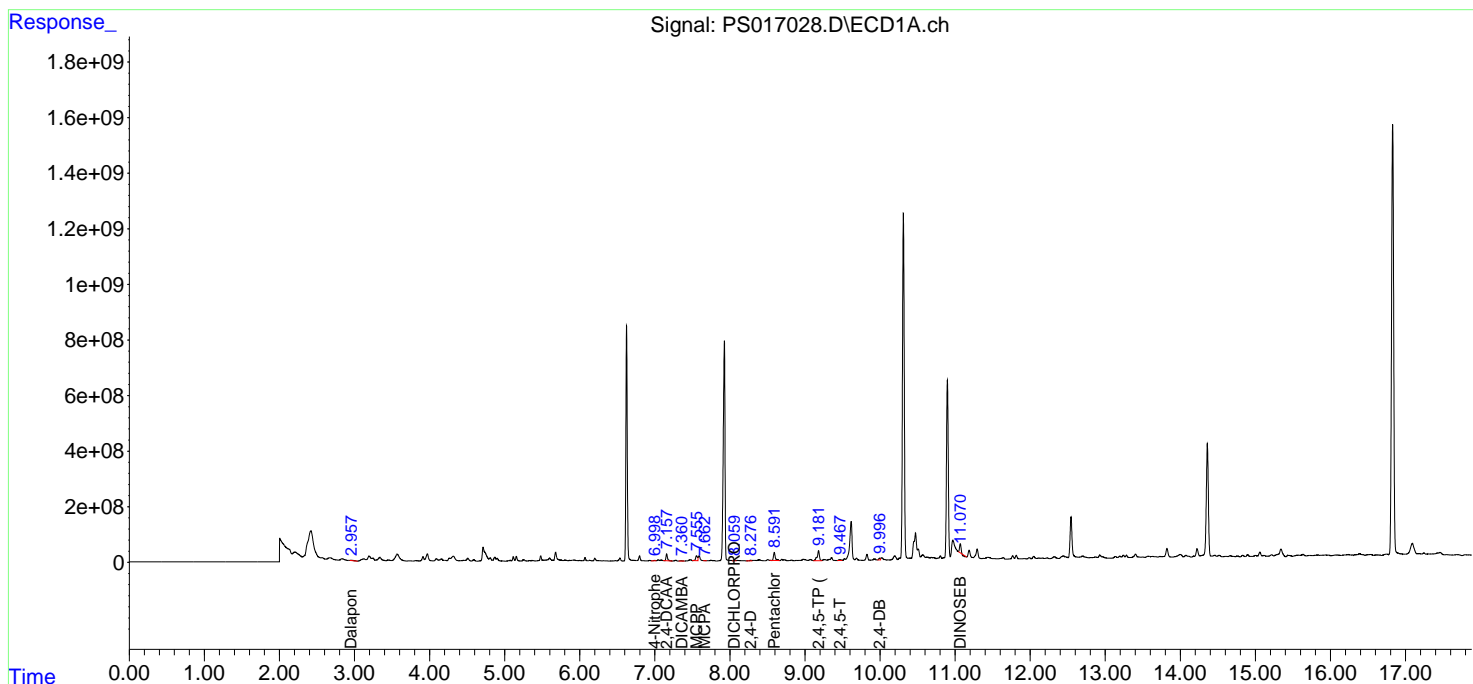
(f)=RT Delta > 1/2 Window (#)=Amounts differ by > 25% (m)=manual int.

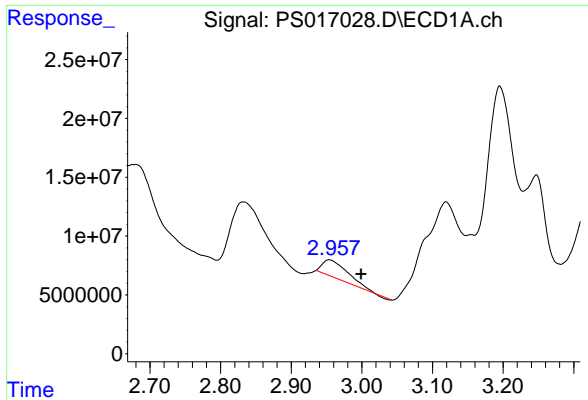
Data Path : Z:\pestpcbsrv\HPCHEM1\ECD_S\Data\PS100821\
 Data File : PS017028.D
 Signal(s) : Signal #1: ECD1A.ch Signal #2: ECD2B.ch
 Acq On : 08 Oct 2021 11:06
 Operator : DD\AJ
 Sample : M4056-02
 Misc :
 ALS Vial : 7 Sample Multiplier: 1

Instrument :
 ECD_S
 ClientSampled :

Integration File signal 1: autoint1.e
 Integration File signal 2: autoint2.e
 Quant Time: Oct 09 00:34:54 2021
 Quant Method : Z:\pestpcbsrv\HPCHEM1\ECD_S\Method\PS092021.M
 Quant Title : 8080.M
 QLast Update : Tue Sep 21 01:52:13 2021
 Response via : Initial Calibration
 Integrator: ChemStation

Volume Inj. : 2 µl
 Signal #1 Phase : Rtx-CLPesticides Signal #2 Phase: Rtx-CLPesticides2
 Signal #1 Info : 30M x 0.32mm x0.5 Signal #2 Info : 30M x 0.32mm x 0.25µm

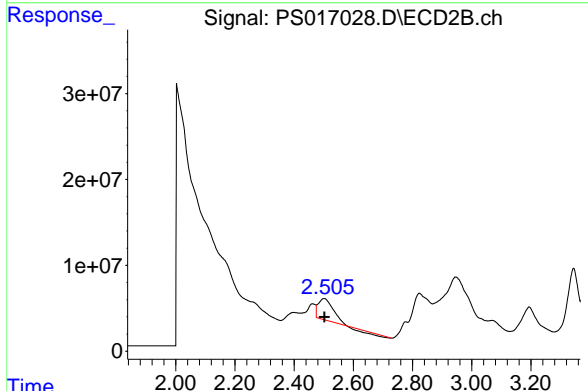




#1 Dalapon

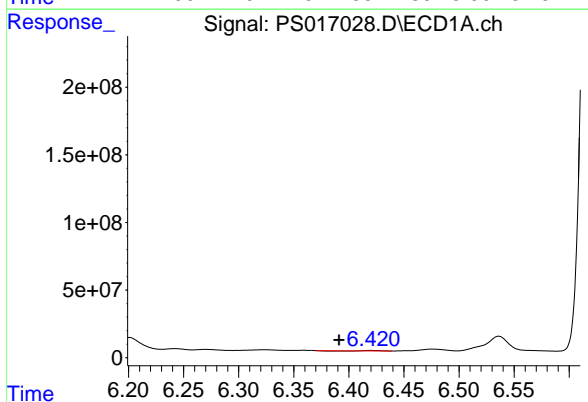
R.T.: 2.954 min
 Delta R.T.: -0.045 min
 Response: 35278459
 Conc: 14.80 ng/ml

Instrument :
 ECD_S
 ClientSampled :



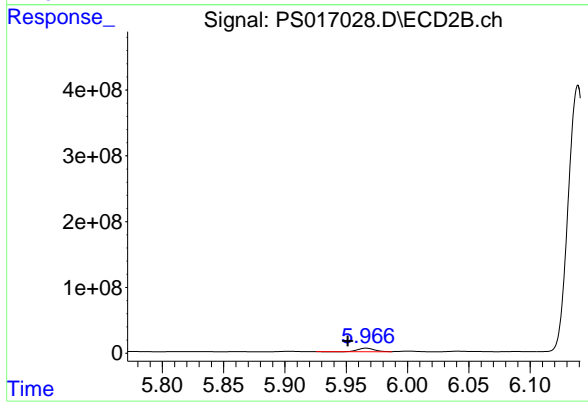
#1 Dalapon

R.T.: 2.502 min
 Delta R.T.: 0.000 min
 Response: 73108480
 Conc: 100.59 ng/ml



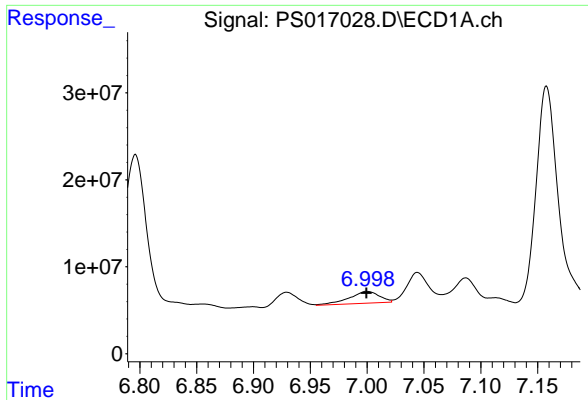
#2 3,5-DICHLOROBENZOIC ACID

R.T.: 6.420 min
 Delta R.T.: 0.028 min
 Response: 1637692
 Conc: N.D.



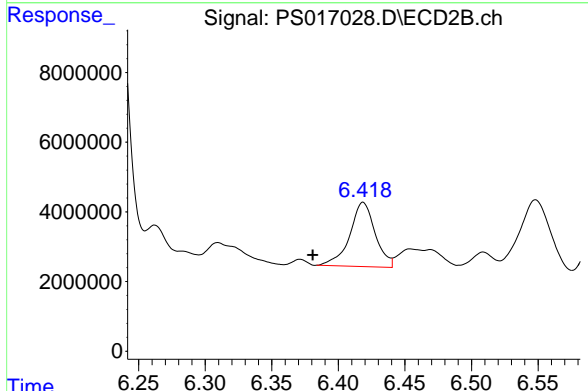
#2 3,5-DICHLOROBENZOIC ACID

R.T.: 5.966 min
 Delta R.T.: 0.015 min
 Response: 50711249
 Conc: 57.52 ng/ml

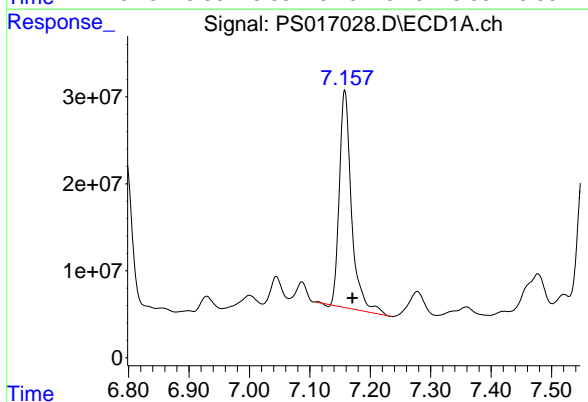


#3 4-Nitrophenol
 R.T.: 7.000 min
 Delta R.T.: 0.000 min
 Response: 24878181
 Conc: 28.72 ng/ml

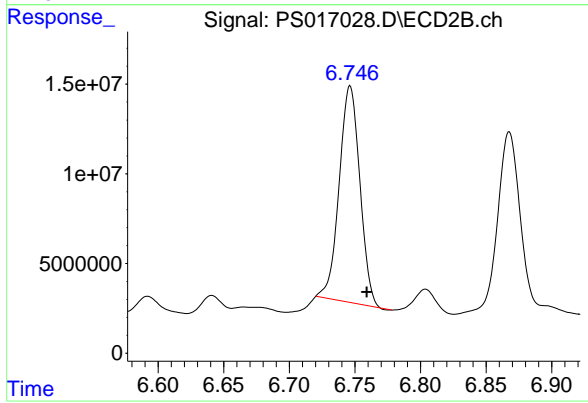
Instrument :
 ECD_S
 ClientSampled :



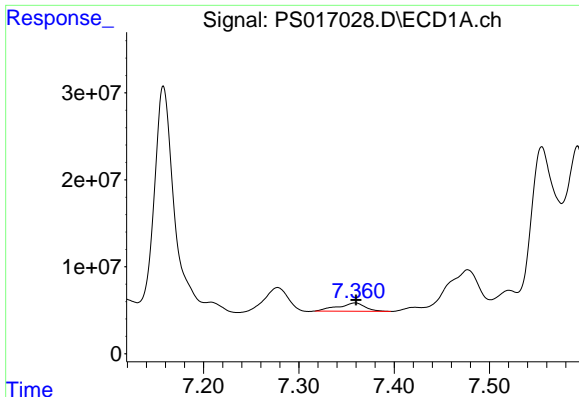
#3 4-Nitrophenol
 R.T.: 6.419 min
 Delta R.T.: 0.038 min
 Response: 24536098
 Conc: 78.46 ng/ml



#4 2,4-DCAA
 R.T.: 7.158 min
 Delta R.T.: -0.012 min
 Response: 350308355
 Conc: 229.93 ng/ml



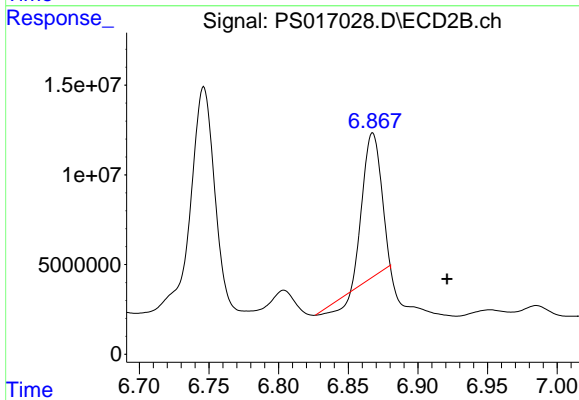
#4 2,4-DCAA
 R.T.: 6.746 min
 Delta R.T.: -0.013 min
 Response: 132436237
 Conc: 225.86 ng/ml



#5 DICAMBA

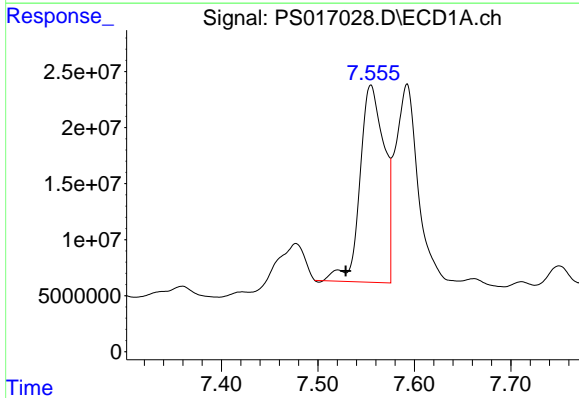
R.T.: 7.359 min
 Delta R.T.: 0.000 min
 Response: 18864973
 Conc: 3.23 ng/ml

Instrument :
 ECD_S
 ClientSampled :



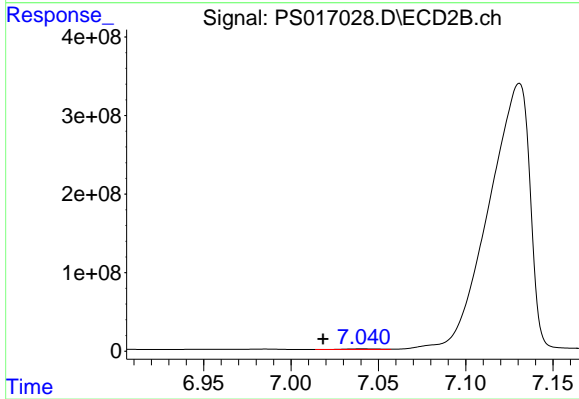
#5 DICAMBA

R.T.: 6.868 min
 Delta R.T.: -0.053 min
 Response: 69689849
 Conc: 27.36 ng/ml



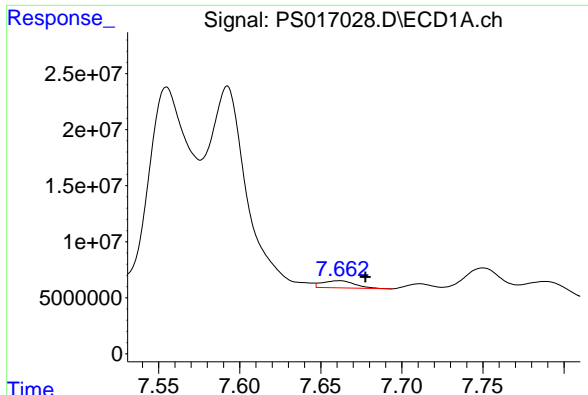
#6 MCP

R.T.: 7.555 min
 Delta R.T.: 0.026 min
 Response: 307215570
 Conc: 70.91 ug/ml



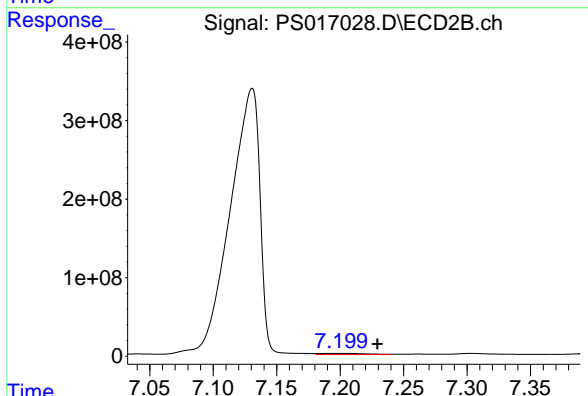
#6 MCP

R.T.: 7.041 min
 Delta R.T.: 0.023 min
 Response: 11830037
 Conc: 5.77 ug/ml

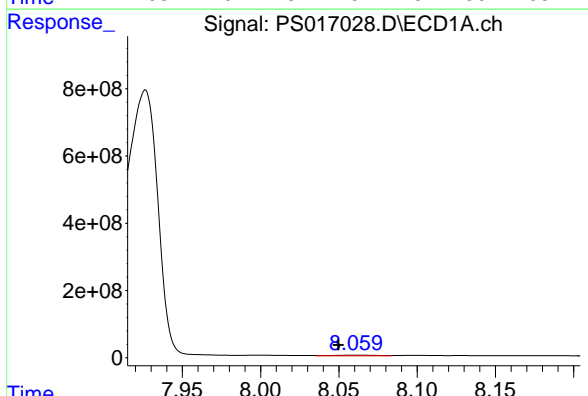


#7 MCPA
 R.T.: 7.661 min
 Delta R.T.: -0.017 min
 Response: 8839008
 Conc: 1.43 ug/ml

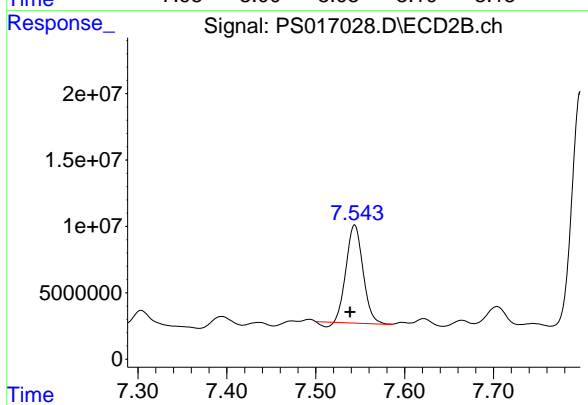
Instrument :
 ECD_S
 ClientSampled :



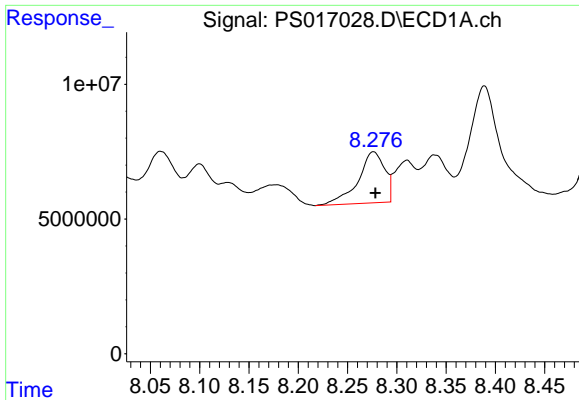
#7 MCPA
 R.T.: 7.199 min
 Delta R.T.: -0.030 min
 Response: 36432795
 Conc: 11.96 ug/ml



#8 DICHLORPROP
 R.T.: 8.061 min
 Delta R.T.: 0.011 min
 Response: 37658579
 Conc: 25.51 ng/ml

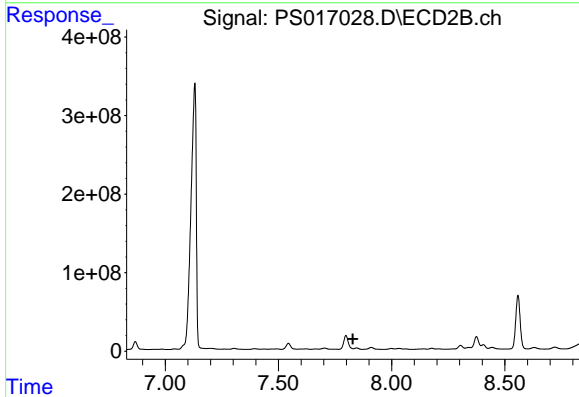


#8 DICHLORPROP
 R.T.: 7.544 min
 Delta R.T.: 0.005 min
 Response: 95443616
 Conc: 147.17 ng/ml

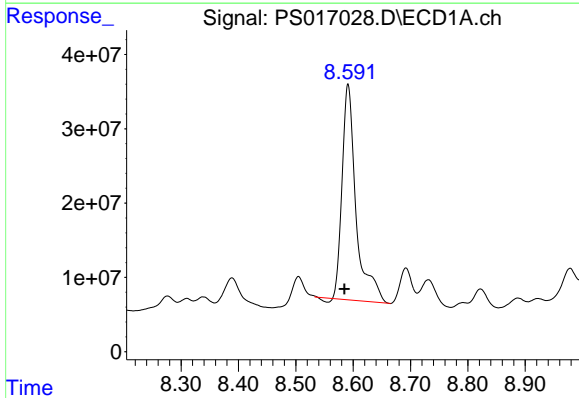


#9 2,4-D
 R.T.: 8.276 min
 Delta R.T.: -0.002 min
 Response: 35573288
 Conc: 20.23 ng/ml

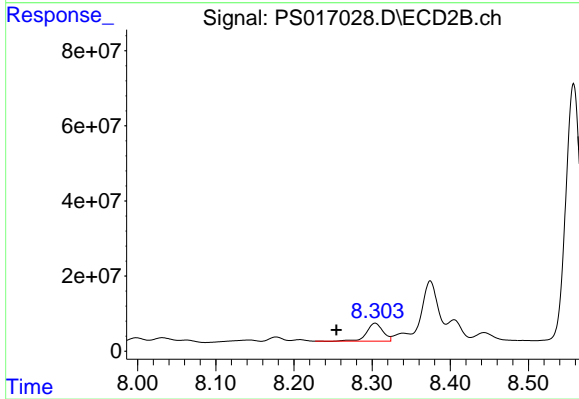
Instrument :
 ECD_S
 ClientSampleId :



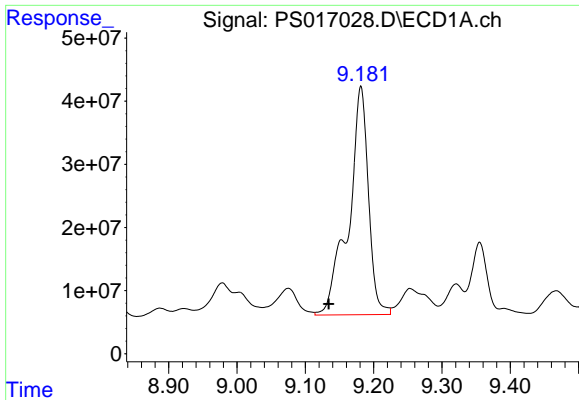
#9 2,4-D
 R.T.: 7.845 min
 Delta R.T.: 0.016 min
 Response: -126146236
 Conc: N.D.



#10 Pentachlorophenol
 R.T.: 8.591 min
 Delta R.T.: 0.007 min
 Response: 487059323
 Conc: 24.10 ng/ml



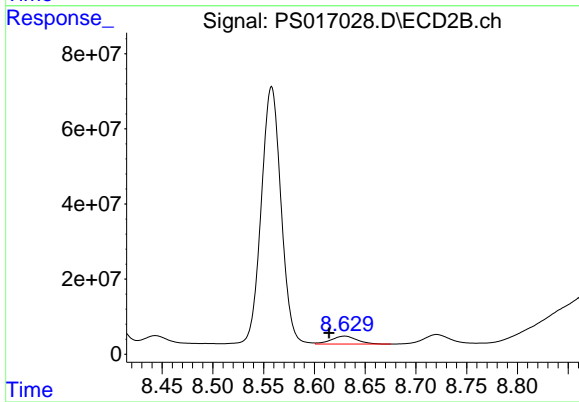
#10 Pentachlorophenol
 R.T.: 8.304 min
 Delta R.T.: 0.049 min
 Response: 68029560
 Conc: 8.27 ng/ml



#11 2,4,5-TP (SILVEX)

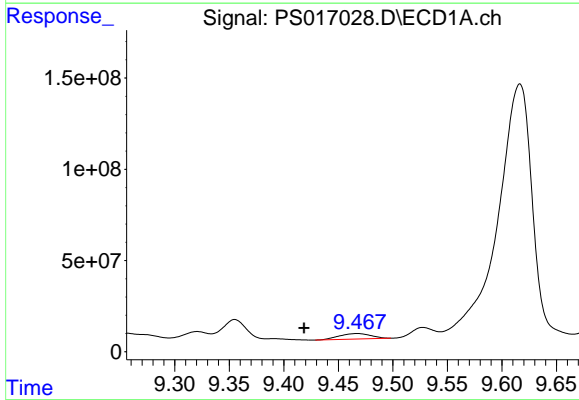
R.T.: 9.181 min
 Delta R.T.: 0.047 min
 Response: 730657667
 Conc: 91.50 ng/ml

Instrument :
 ECD_S
 ClientSampled :



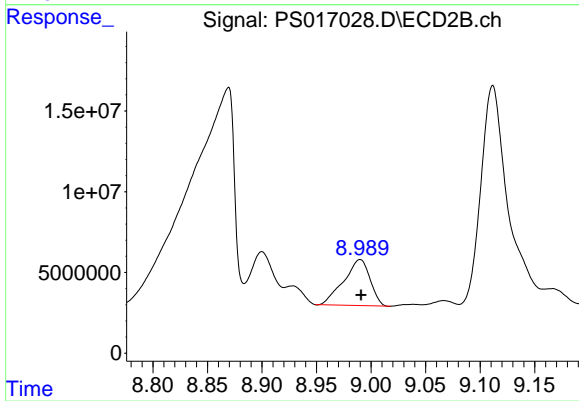
#11 2,4,5-TP (SILVEX)

R.T.: 8.630 min
 Delta R.T.: 0.015 min
 Response: 37878243
 Conc: 10.82 ng/ml



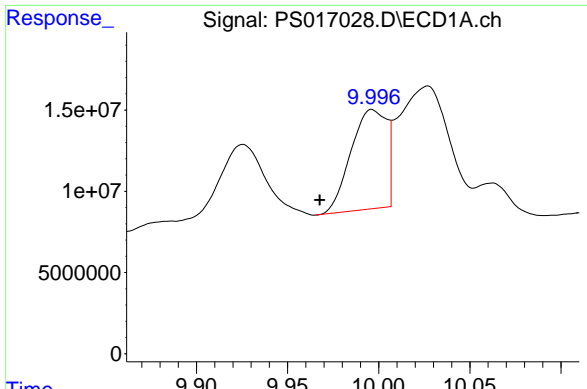
#12 2,4,5-T

R.T.: 9.467 min
 Delta R.T.: 0.049 min
 Response: 60518342
 Conc: 7.33 ng/ml



#12 2,4,5-T

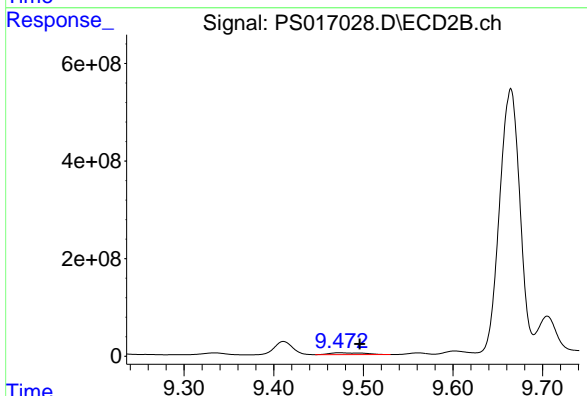
R.T.: 8.990 min
 Delta R.T.: -0.001 min
 Response: 47802998
 Conc: 14.69 ng/ml



#13 2,4-DB

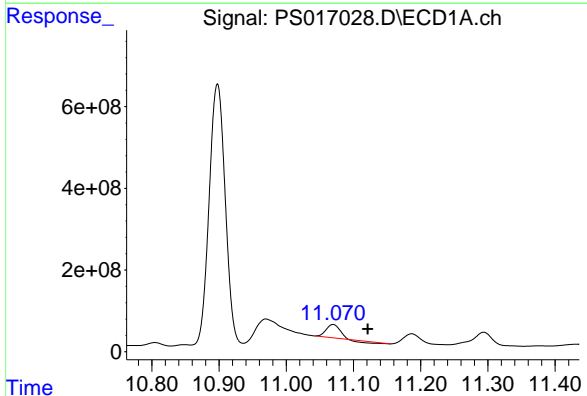
R.T.: 9.997 min
 Delta R.T.: 0.029 min
 Response: 83606350
 Conc: 50.58 ng/ml

Instrument :
 ECD_S
 ClientSampled :



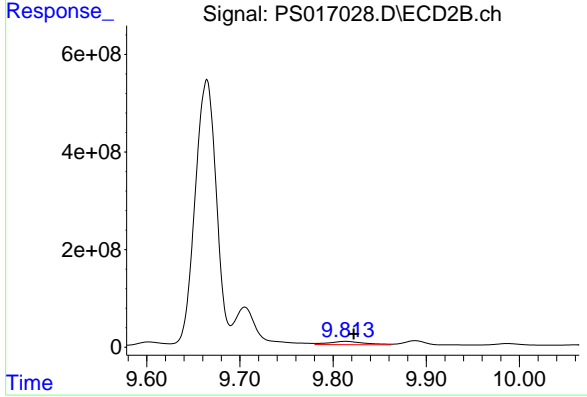
#13 2,4-DB

R.T.: 9.473 min
 Delta R.T.: -0.023 min
 Response: 101307019
 Conc: 243.13 ng/ml



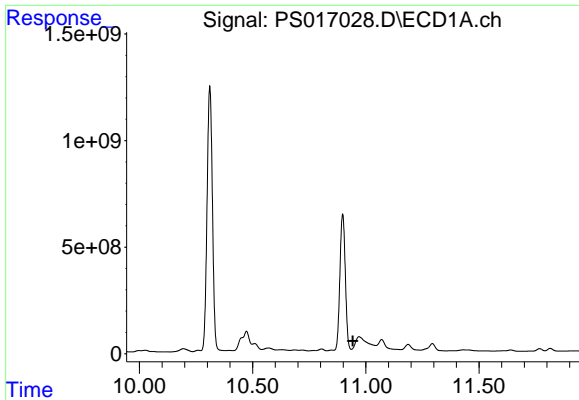
#14 DINOSEB

R.T.: 11.070 min
 Delta R.T.: -0.051 min
 Response: 374721574
 Conc: 61.50 ng/ml



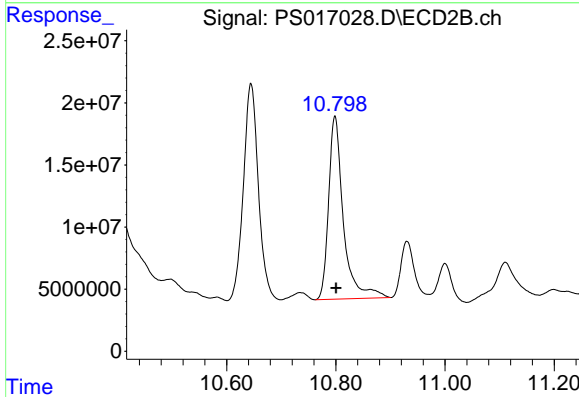
#14 DINOSEB

R.T.: 9.813 min
 Delta R.T.: -0.009 min
 Response: 178043650
 Conc: 72.68 ng/ml

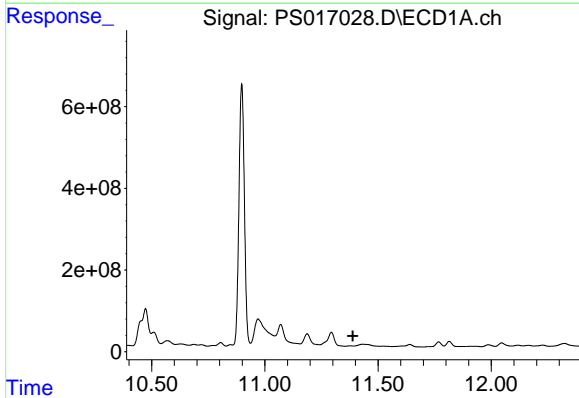


#15 Picloram
 R.T.: 10.970 min
 Delta R.T.: 0.027 min
 Response: -12624389728
 Conc: N.D.

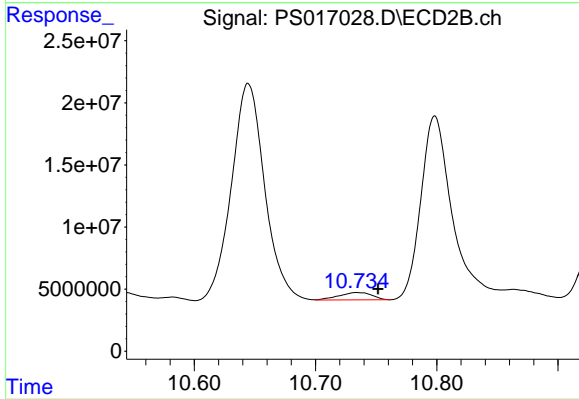
Instrument :
 ECD_S
 ClientSampled :



#15 Picloram
 R.T.: 10.798 min
 Delta R.T.: -0.002 min
 Response: 277303007
 Conc: 64.64 ng/ml



#16 DCPA
 R.T.: 11.376 min
 Delta R.T.: -0.013 min
 Response: -6616229
 Conc: N.D.



#16 DCPA
 R.T.: 10.735 min
 Delta R.T.: -0.017 min
 Response: 11282766
 Conc: 2.59 ng/ml