

Data Path : Z:\pestpcbsrv\HPCHEM1\ECD_S\Data\PS100924\
 Data File : PS027883.D
 Signal(s) : Signal #1: ECD1A.ch Signal #2: ECD2B.ch
 Acq On : 09 Oct 2024 16:40
 Operator : AR\AJ
 Sample : I.BLK
 Misc :
 ALS Vial : 2 Sample Multiplier: 1

Instrument :
 ECD_S
 ClientSampleId :
 I.BLK

Integration File signal 1: autoint1.e
 Integration File signal 2: autoint2.e
 Quant Time: Oct 10 03:02:17 2024
 Quant Method : Z:\pestpcbsrv\HPCHEM1\ECD_S\Method\PS100724.M
 Quant Title : 8080.M
 QLast Update : Mon Oct 07 13:46:03 2024
 Response via : Initial Calibration
 Integrator: ChemStation

Volume Inj. : 1 µl
 Signal #1 Phase : ZB-MR2 Signal #2 Phase: ZB-MR2
 Signal #1 Info : 30M x 0.32mm x0.5 Signal #2 Info : 30M x 0.32mm x 0.25µm

Compound	RT#1	RT#2	Resp#1	Resp#2	ng/ml	ng/ml

System Monitoring Compounds						
4) S 2,4-DCAA	7.097	7.626	1398.3E6	448.5E6	518.985	451.308
Target Compounds						
1) T Dalapon	2.532	2.618	24603654	736674	5.482	<MDL #
2) T 3,5-DICHL...	6.303	0.000	2668838	0	<MDL	N.D. #
3) T 4-Nitroph...	6.892	0.000	18597678	0	10.186	N.D. #
5) T DICAMBA	0.000	7.815	0	5756686	N.D.	1.656
6) T MCPP	0.000	7.901	0	2241958	N.D.	<MDL
7) T MCPA	7.635f	8.152	1278284	7045440	<MDL	1.408 #
8) T DICHLORPROP	7.986	8.572f	1758432	3080641	<MDL	3.121 #
9) T 2,4-D	0.000	8.811f	0	1567045	N.D.	1.563
10) T Pentachlo...	8.488	0.000	2100444	0	<MDL	N.D. #
11) T 2,4,5-TP ...	9.004f	9.745	7713282	6614306	<MDL	1.335 #
12) T 2,4,5-T	9.357f	0.000	2463639	0	<MDL	N.D. #
13) T 2,4-DB	9.841f	0.000	2447504	0	<MDL	N.D. #
14) T DINOSEB	11.080	0.000	1081319	0	<MDL	N.D. #
15) T Picloram	10.886	12.178	45934618	5910760	2.134	1.415 #

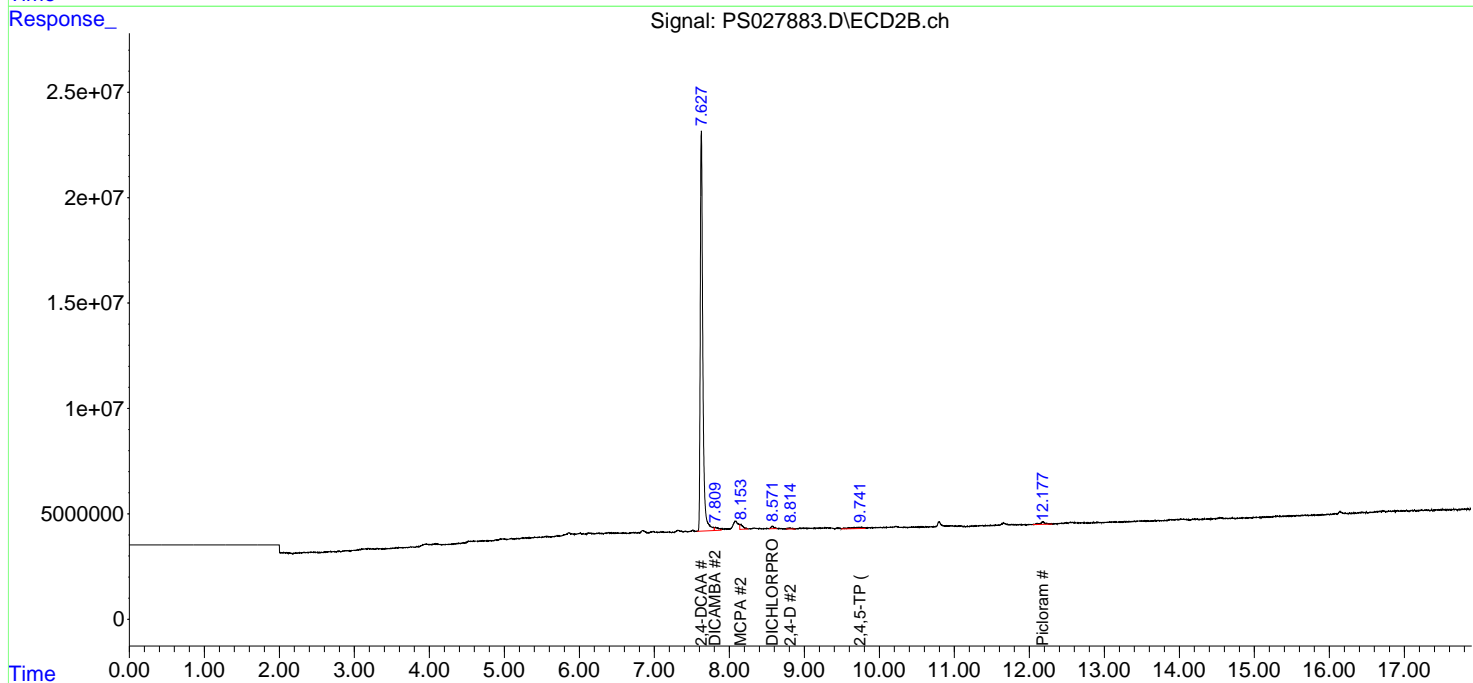
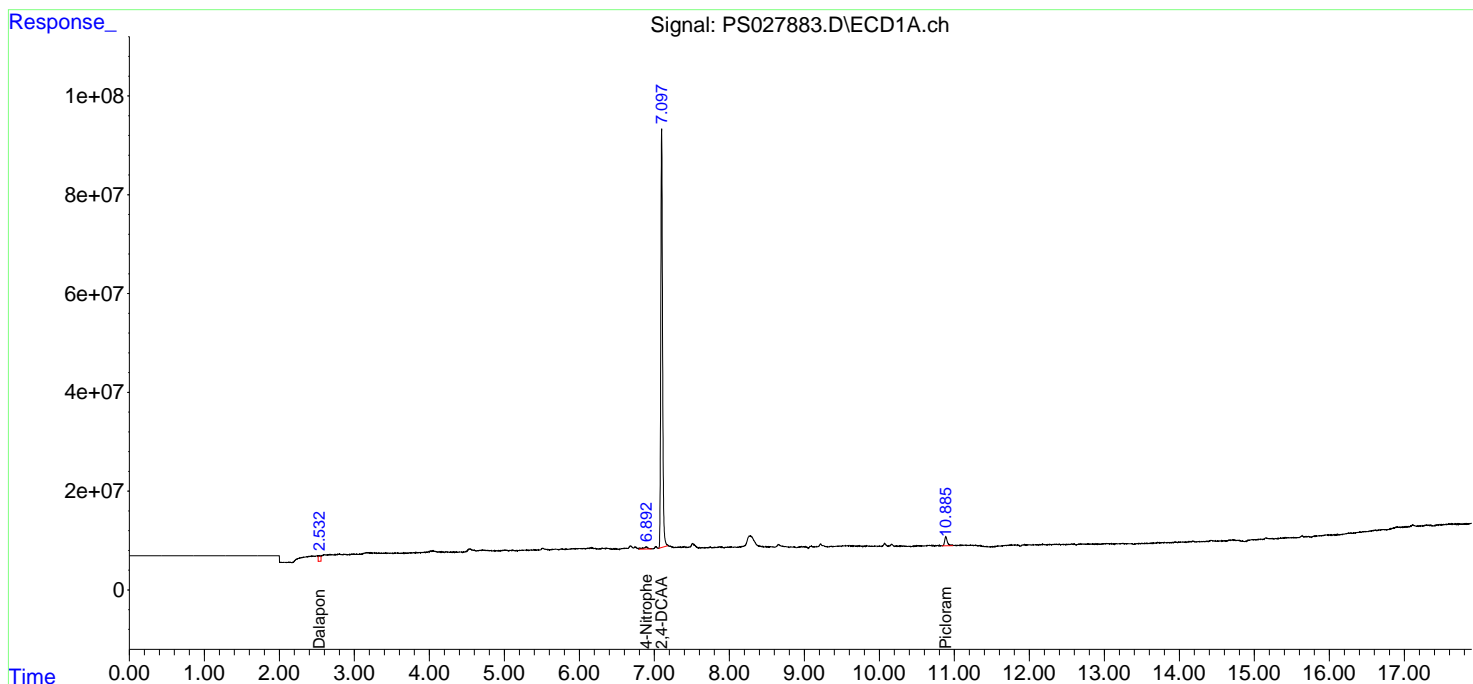
(f)=RT Delta > 1/2 Window (#)=Amounts differ by > 25% (m)=manual int.

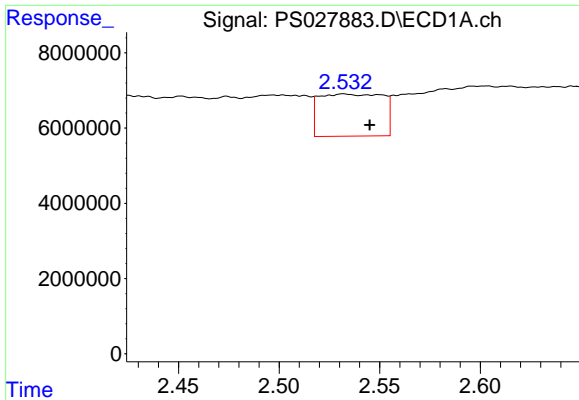
Data Path : Z:\pestpcbsrv\HPCHEM1\ECD_S\Data\PS100924\
 Data File : PS027883.D
 Signal(s) : Signal #1: ECD1A.ch Signal #2: ECD2B.ch
 Acq On : 09 Oct 2024 16:40
 Operator : AR\AJ
 Sample : I.BLK
 Misc :
 ALS Vial : 2 Sample Multiplier: 1

Instrument :
 ECD_S
 ClientSampleId :
 I.BLK

Integration File signal 1: autoint1.e
 Integration File signal 2: autoint2.e
 Quant Time: Oct 10 03:02:17 2024
 Quant Method : Z:\pestpcbsrv\HPCHEM1\ECD_S\Method\PS100724.M
 Quant Title : 8080.M
 QLast Update : Mon Oct 07 13:46:03 2024
 Response via : Initial Calibration
 Integrator: ChemStation

Volume Inj. : 1 µl
 Signal #1 Phase : ZB-MR1 Signal #2 Phase: ZB-MR2
 Signal #1 Info : 30M x 0.32mm x0.5 Signal #2 Info : 30M x 0.32mm x 0.25µm

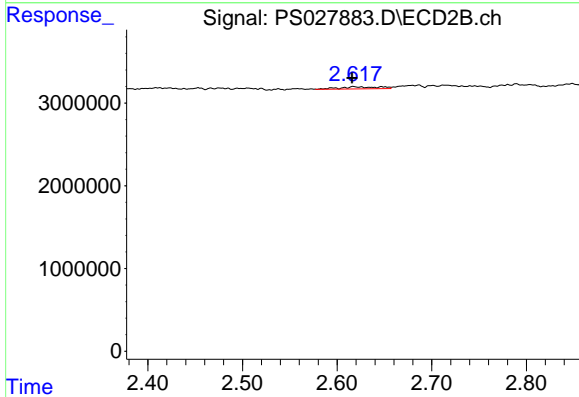




#1 Dalapon

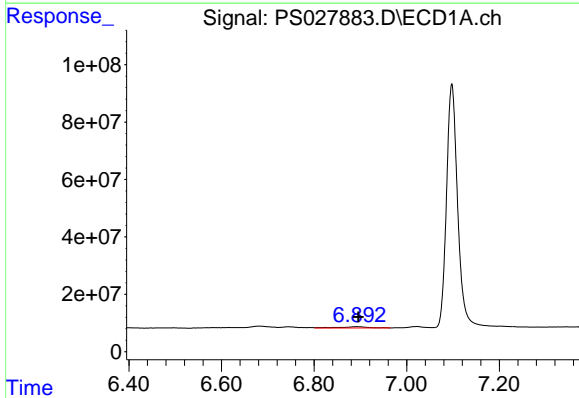
R.T.: 2.532 min
 Delta R.T.: -0.013 min
 Response: 24603654
 Conc: 5.48 ng/ml

Instrument :
 ECD_S
 ClientSampleId :
 I.BLK



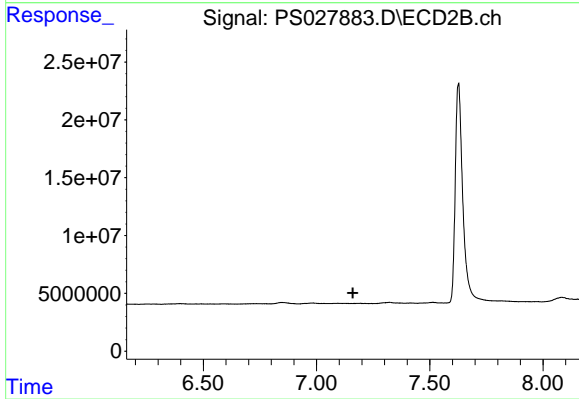
#1 Dalapon

R.T.: 2.618 min
 Delta R.T.: 0.003 min
 Response: 736674
 Conc: N.D.



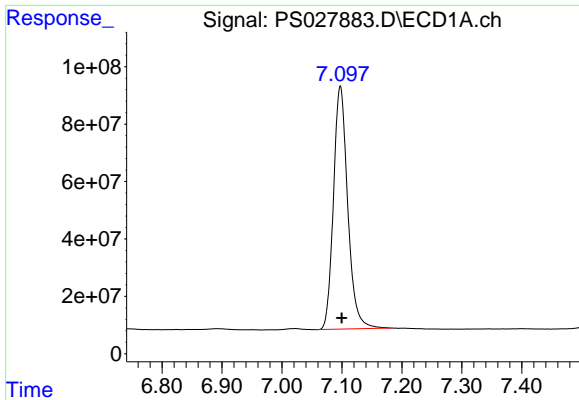
#3 4-Nitrophenol

R.T.: 6.892 min
 Delta R.T.: -0.004 min
 Response: 18597678
 Conc: 10.19 ng/ml



#3 4-Nitrophenol

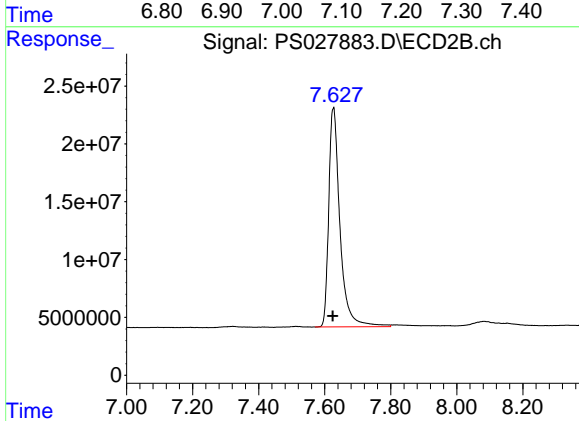
R.T.: 0.000 min
 Exp R.T.: 7.160 min
 Response: 0
 Conc: N.D.



#4 2,4-DCAA

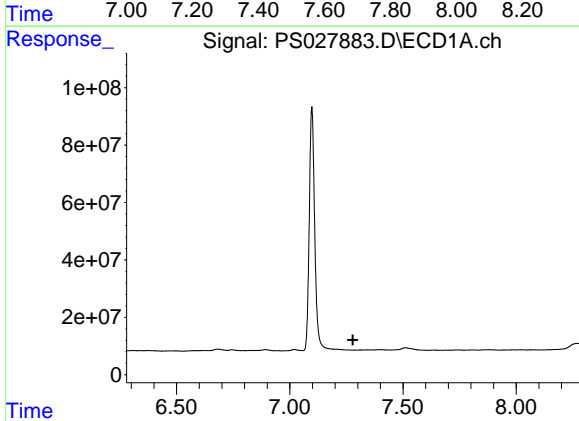
R.T.: 7.097 min
 Delta R.T.: -0.003 min
 Response: 1398297051
 Conc: 518.99 ng/ml

Instrument :
 ECD_S
 ClientSampleId :
 I.BLK



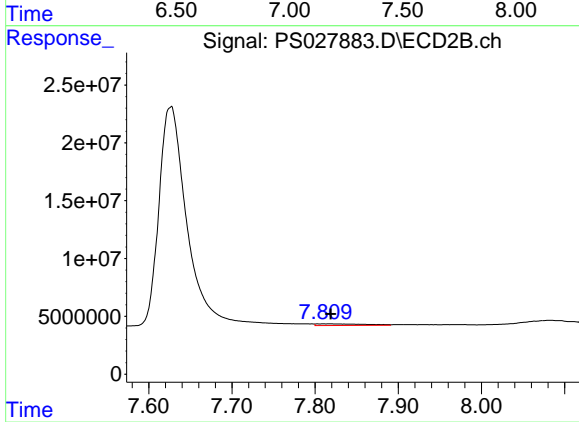
#4 2,4-DCAA

R.T.: 7.626 min
 Delta R.T.: 0.001 min
 Response: 448458455
 Conc: 451.31 ng/ml



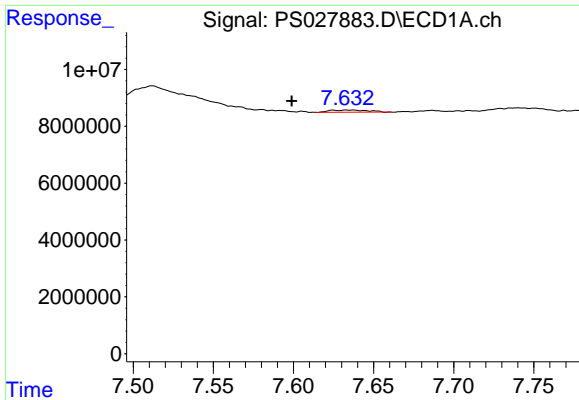
#5 DICAMBA

R.T.: 0.000 min
 Exp R.T. : 7.279 min
 Response: 0
 Conc: N.D.



#5 DICAMBA

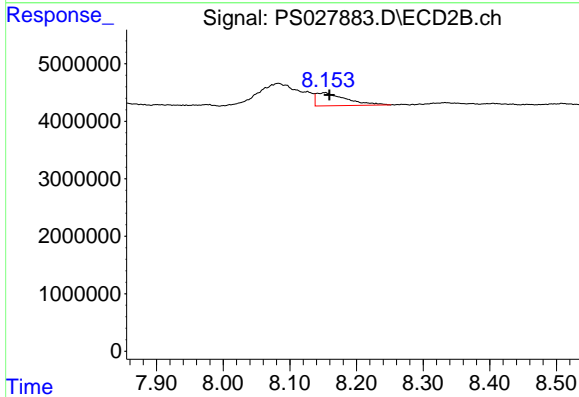
R.T.: 7.815 min
 Delta R.T.: -0.003 min
 Response: 5756686
 Conc: 1.66 ng/ml



#7 MCPA

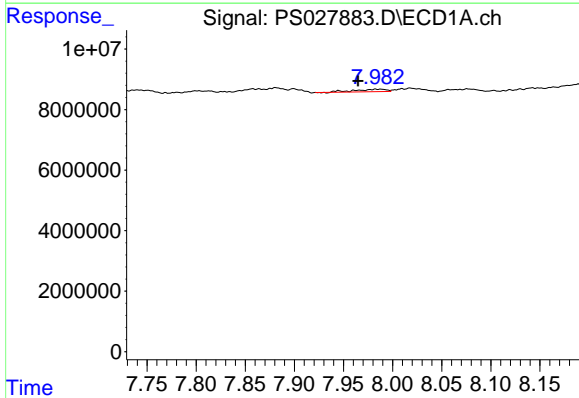
R.T.: 7.635 min
 Delta R.T.: 0.036 min
 Response: 1278284
 Conc: N.D.

Instrument :
 ECD_S
 ClientSampleId :
 I.BLK



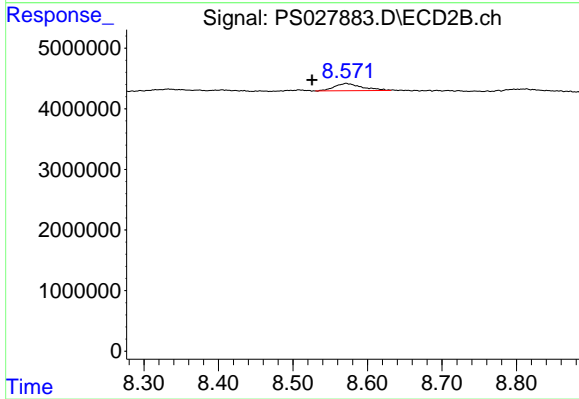
#7 MCPA

R.T.: 8.152 min
 Delta R.T.: -0.007 min
 Response: 7045440
 Conc: 1.41 ug/ml



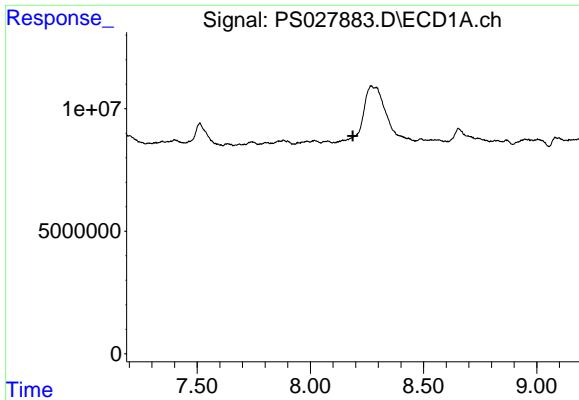
#8 DICHLORPROP

R.T.: 7.986 min
 Delta R.T.: 0.021 min
 Response: 1758432
 Conc: N.D.



#8 DICHLORPROP

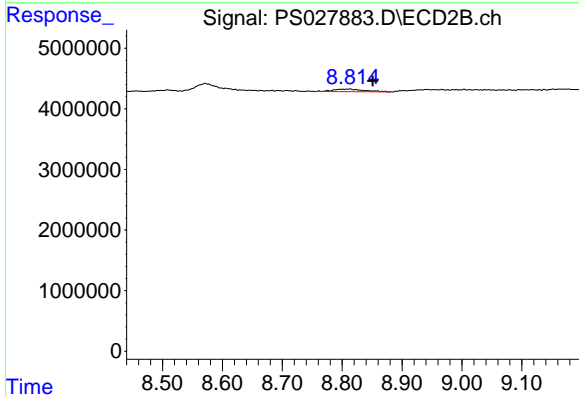
R.T.: 8.572 min
 Delta R.T.: 0.046 min
 Response: 3080641
 Conc: 3.12 ng/ml



#9 2,4-D

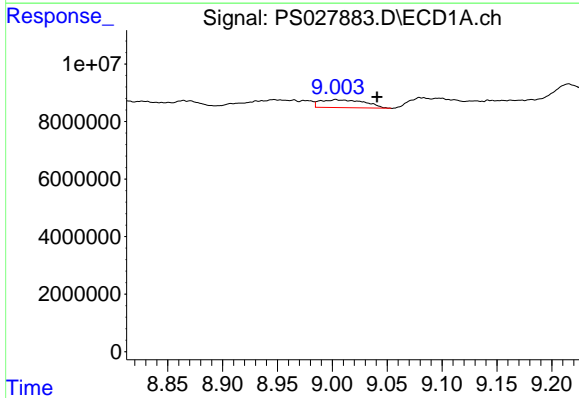
R.T.: 0.000 min
 Exp R.T.: 8.188 min
 Response: 0
 Conc: N.D.

Instrument :
 ECD_S
 ClientSampleId :
 I.BLK



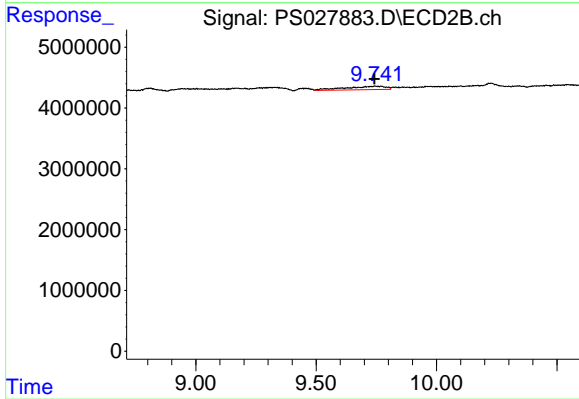
#9 2,4-D

R.T.: 8.811 min
 Delta R.T.: -0.040 min
 Response: 1567045
 Conc: 1.56 ng/ml



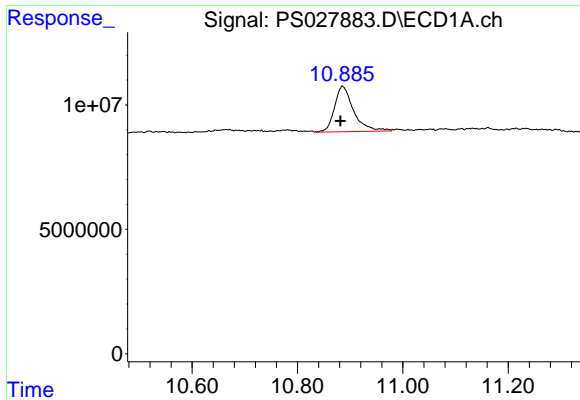
#11 2,4,5-TP (SILVEX)

R.T.: 9.004 min
 Delta R.T.: -0.037 min
 Response: 7713282
 Conc: N.D.



#11 2,4,5-TP (SILVEX)

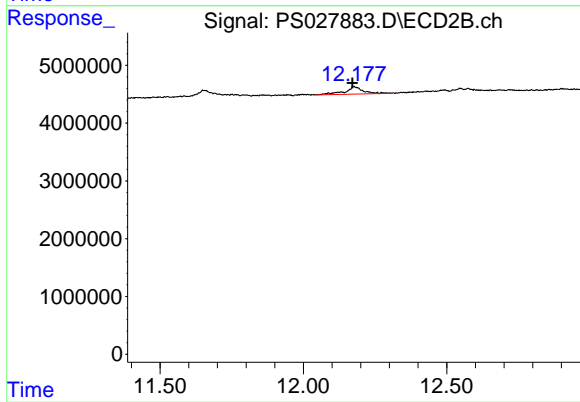
R.T.: 9.745 min
 Delta R.T.: 0.004 min
 Response: 6614306
 Conc: 1.34 ng/ml



#15 Picloram

R.T.: 10.886 min
Delta R.T.: 0.004 min
Response: 45934618
Conc: 2.13 ng/ml

Instrument :
ECD_S
ClientSampleId :
I.BLK



#15 Picloram

R.T.: 12.178 min
Delta R.T.: 0.007 min
Response: 5910760
Conc: 1.41 ng/ml