

Data Path : Z:\pestpcbsrv\HPCHEM1\ECD_S\Data\PS100924\
 Data File : PS027896.D
 Signal(s) : Signal #1: ECD1A.ch Signal #2: ECD2B.ch
 Acq On : 09 Oct 2024 23:10
 Operator : AR\AJ
 Sample : HSTDCCC750
 Misc :
 ALS Vial : 14 Sample Multiplier: 1

Instrument :
 ECD_S
 ClientSampleId :
 HSTDCCC750

Integration File signal 1: autoint1.e
 Integration File signal 2: autoint2.e
 Quant Time: Oct 10 03:06:45 2024
 Quant Method : Z:\pestpcbsrv\HPCHEM1\ECD_S\Method\PS100724.M
 Quant Title : 8080.M
 QLast Update : Mon Oct 07 13:46:03 2024
 Response via : Initial Calibration
 Integrator: ChemStation

Volume Inj. : 1 µl
 Signal #1 Phase : ZB-MR2 Signal #2 Phase: ZB-MR2
 Signal #1 Info : 30M x 0.32mm x0.5 Signal #2 Info : 30M x 0.32mm x 0.25µm

Compound	RT#1	RT#2	Resp#1	Resp#2	ng/ml	ng/ml

System Monitoring Compounds						
4) S 2,4-DCAA	7.096	7.625	2038.3E6	738.1E6	756.533	742.745
Target Compounds						
1) T Dalapon	2.546	2.622	2929.4E6	1097.1E6	652.729	658.677
2) T 3,5-DICHL...	6.288	6.596	2768.1E6	959.7E6	696.870	701.845
3) T 4-Nitroph...	6.891	7.159	1255.4E6	455.7E6	687.571	671.267
5) T DICAMBA	7.275	7.819	7923.8E6	2422.7E6	726.341	696.755
6) T MCPP	7.455	7.923	537.6E6	192.3E6	72.293	69.880
7) T MCPA	7.600	8.163	769.4E6	323.3E6	72.646	64.636
8) T DICHLORPROP	7.960	8.526	2050.8E6	678.7E6	716.615	687.680
9) T 2,4-D	8.182	8.851	2386.1E6	700.9E6	709.292	699.261
10) T Pentachlo...	8.469	9.365	28436.1E6	9683.9E6	731.875	700.768
11) T 2,4,5-TP ...	9.034	9.741	11569.7E6	3587.2E6	733.852	724.067
12) T 2,4,5-T	9.320	10.155	11907.2E6	3085.1E6	736.258	716.581
13) T 2,4-DB	9.883	10.715	1884.2E6	369.8E6	726.454	730.339
14) T DINOSEB	11.058	11.090	7668.8E6	2465.8E6	727.383	729.947
15) T Picloram	10.874	12.169	15603.2E6	3288.9E6	724.806	787.309
16) T DCPA	11.358	12.122	13179.1E6	3772.5E6	742.031	785.882

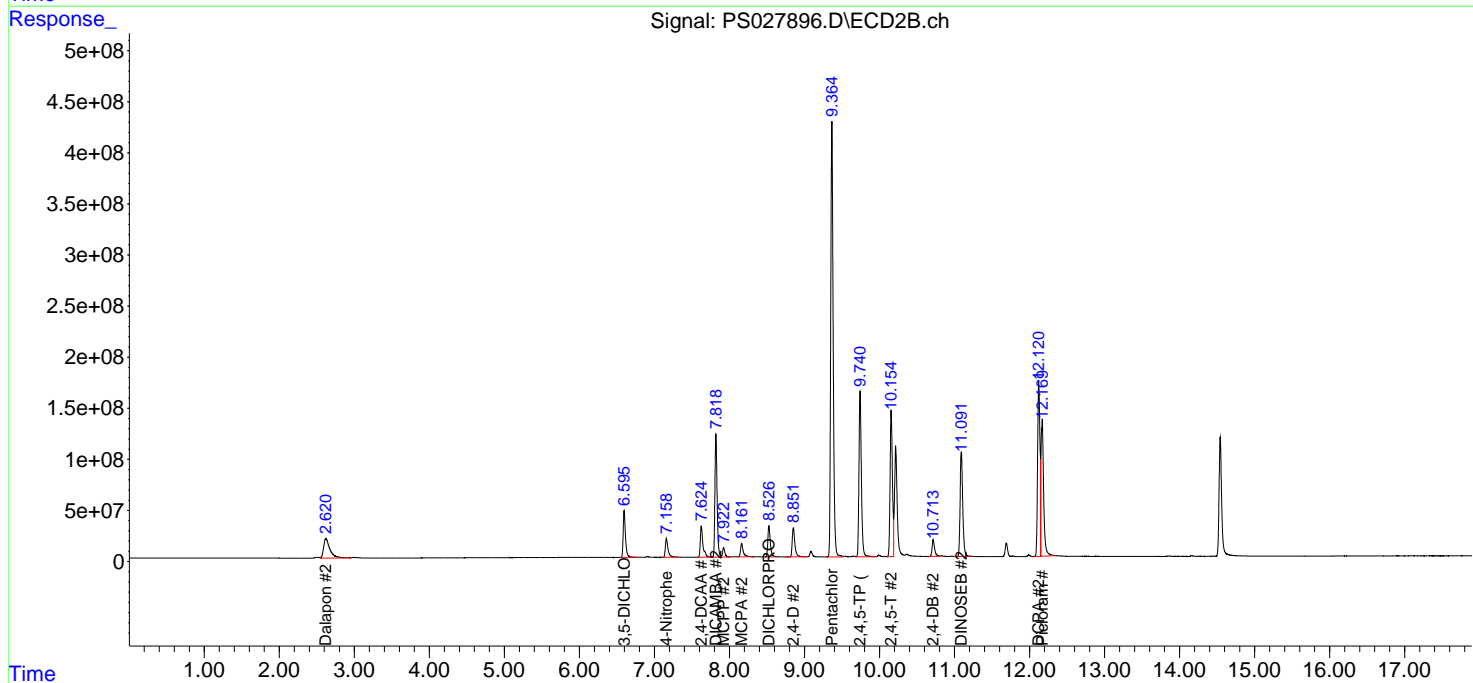
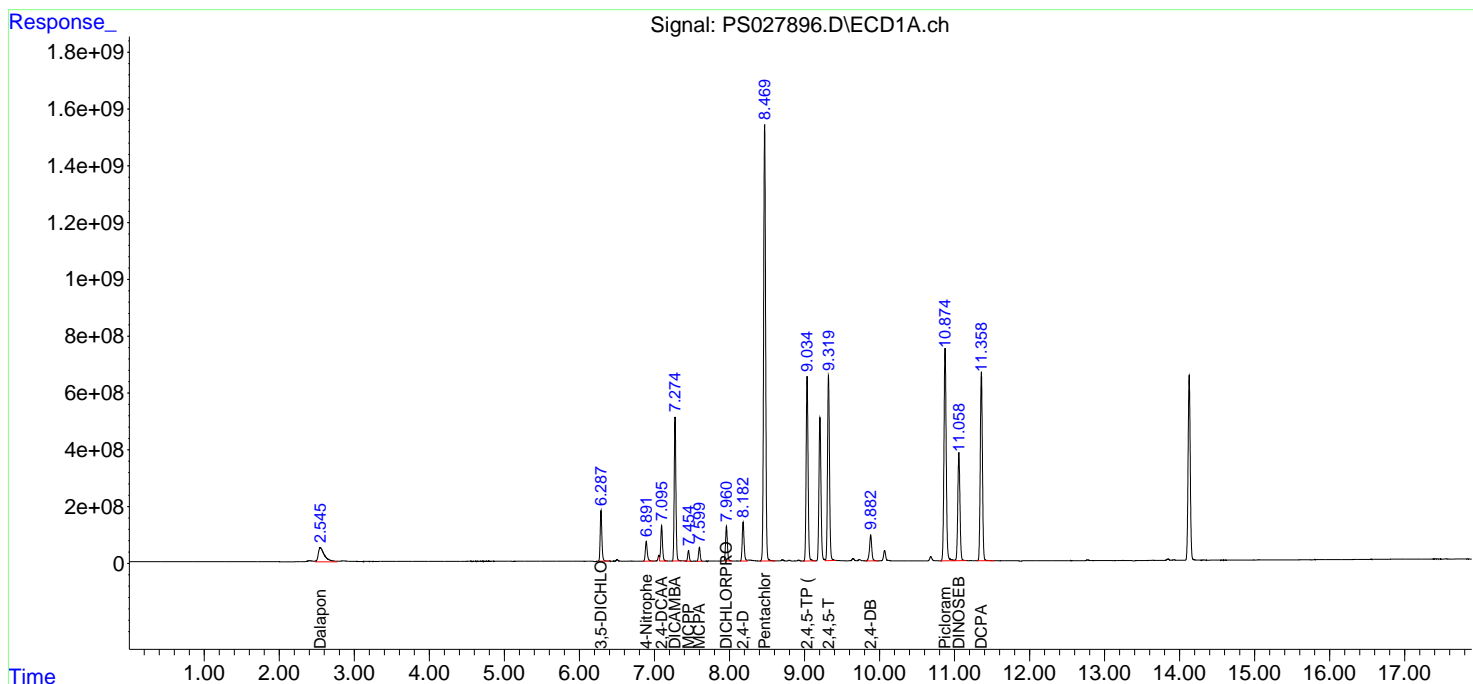
(f)=RT Delta > 1/2 Window (#)=Amounts differ by > 25% (m)=manual int.

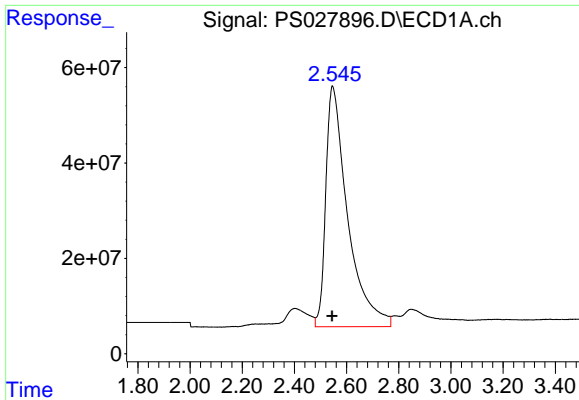
Data Path : Z:\pestpcbsrv\HPCHEM1\ECD_S\Data\PS100924\
 Data File : PS027896.D
 Signal(s) : Signal #1: ECD1A.ch Signal #2: ECD2B.ch
 Acq On : 09 Oct 2024 23:10
 Operator : AR\AJ
 Sample : HSTDCCC750
 Misc :
 ALS Vial : 14 Sample Multiplier: 1

Instrument :
 ECD_S
 ClientSampleId :
 HSTDCCC750

Integration File signal 1: autoint1.e
 Integration File signal 2: autoint2.e
 Quant Time: Oct 10 03:06:45 2024
 Quant Method : Z:\pestpcbsrv\HPCHEM1\ECD_S\Method\PS100724.M
 Quant Title : 8080.M
 QLast Update : Mon Oct 07 13:46:03 2024
 Response via : Initial Calibration
 Integrator: ChemStation

Volume Inj. : 1 µl
 Signal #1 Phase : ZB-MR1 Signal #2 Phase: ZB-MR2
 Signal #1 Info : 30M x 0.32mm x0.5 Signal #2 Info : 30M x 0.32mm x 0.25µm

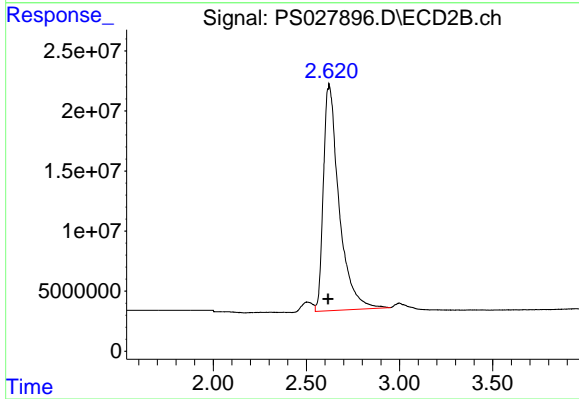




#1 Dalapon

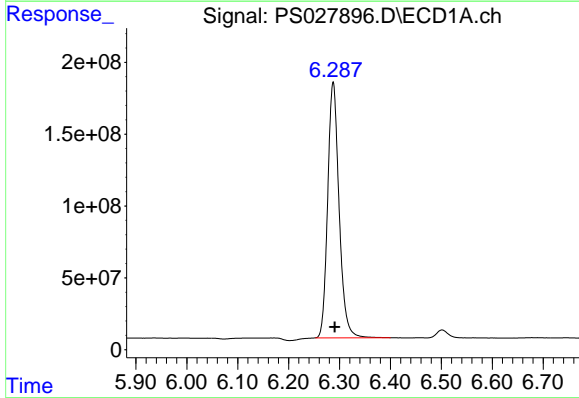
R.T.: 2.546 min
 Delta R.T.: 0.001 min
 Response: 2929389135
 Conc: 652.73 ng/ml

Instrument :
 ECD_S
 ClientSampleId :
 HSTDCCC750



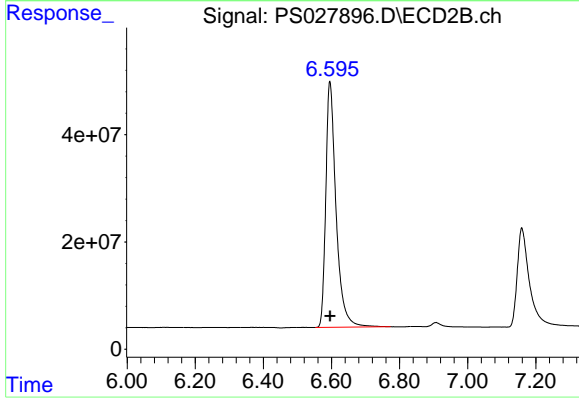
#1 Dalapon

R.T.: 2.622 min
 Delta R.T.: 0.006 min
 Response: 1097142902
 Conc: 658.68 ng/ml



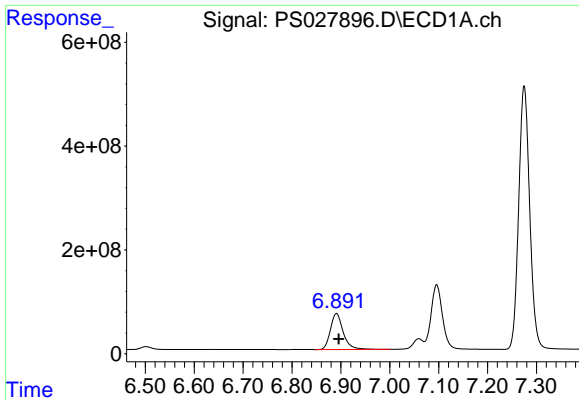
#2 3,5-DICHLOROBENZOIC ACID

R.T.: 6.288 min
 Delta R.T.: -0.003 min
 Response: 2768078204
 Conc: 696.87 ng/ml



#2 3,5-DICHLOROBENZOIC ACID

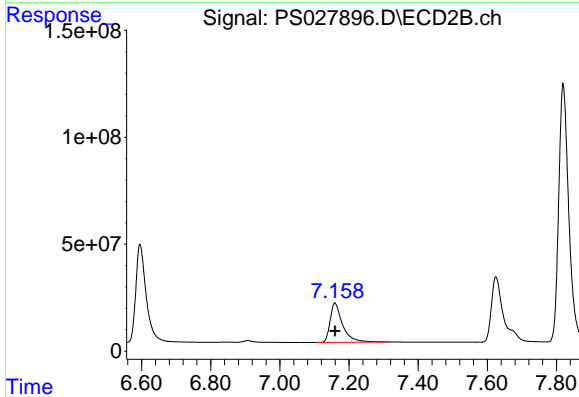
R.T.: 6.596 min
 Delta R.T.: 0.000 min
 Response: 959739821
 Conc: 701.84 ng/ml



#3 4-Nitrophenol

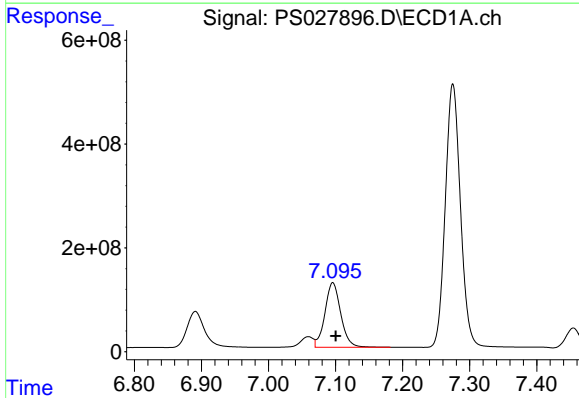
R.T.: 6.891 min
 Delta R.T.: -0.005 min
 Response: 1255416758
 Conc: 687.57 ng/ml

Instrument :
 ECD_S
 ClientSampleId :
 HSTDCCC750



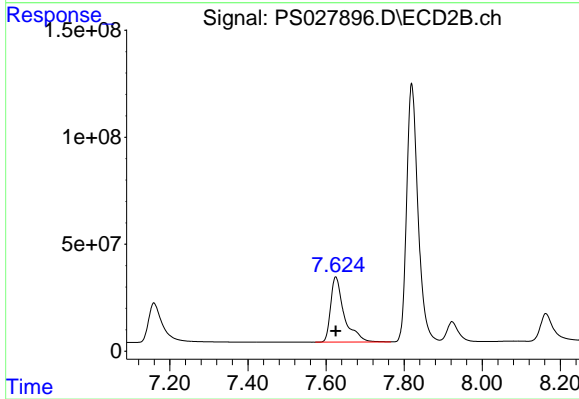
#3 4-Nitrophenol

R.T.: 7.159 min
 Delta R.T.: 0.000 min
 Response: 455650822
 Conc: 671.27 ng/ml



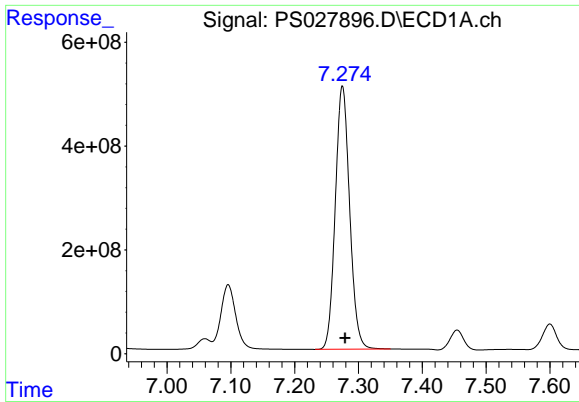
#4 2,4-DCAA

R.T.: 7.096 min
 Delta R.T.: -0.004 min
 Response: 2038319632
 Conc: 756.53 ng/ml



#4 2,4-DCAA

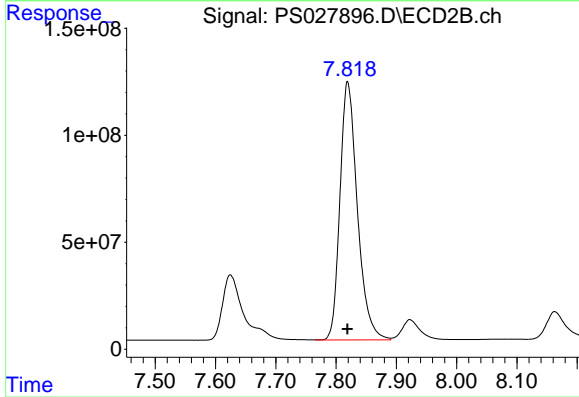
R.T.: 7.625 min
 Delta R.T.: 0.000 min
 Response: 738055058
 Conc: 742.75 ng/ml



#5 DICAMBA

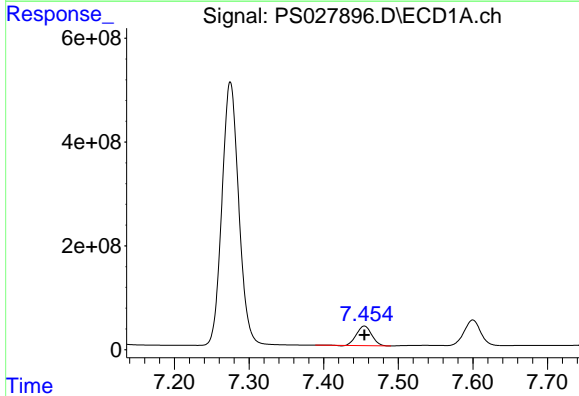
R.T.: 7.275 min
 Delta R.T.: -0.004 min
 Response: 7923761993
 Conc: 726.34 ng/ml

Instrument :
 ECD_S
 ClientSampleId :
 HSTDCCC750



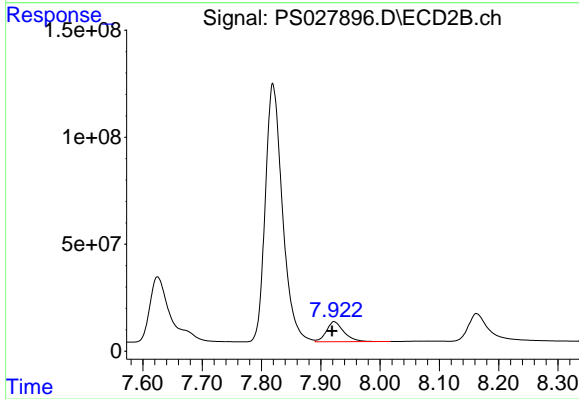
#5 DICAMBA

R.T.: 7.819 min
 Delta R.T.: 0.000 min
 Response: 2422737995
 Conc: 696.75 ng/ml



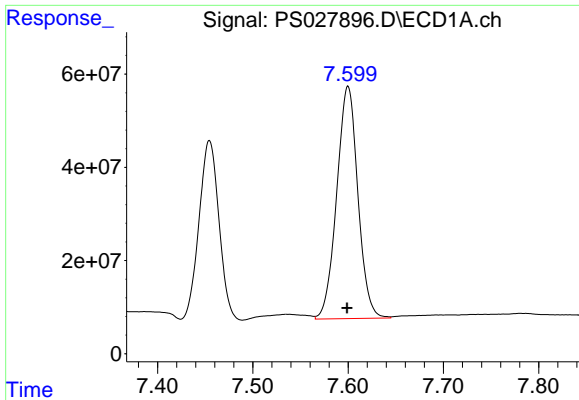
#6 MCPP

R.T.: 7.455 min
 Delta R.T.: 0.000 min
 Response: 537639392
 Conc: 72.29 ug/ml



#6 MCPP

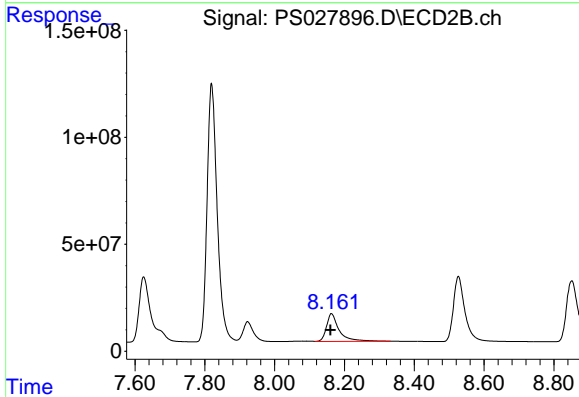
R.T.: 7.923 min
 Delta R.T.: 0.004 min
 Response: 192325599
 Conc: 69.88 ug/ml



#7 MCPA

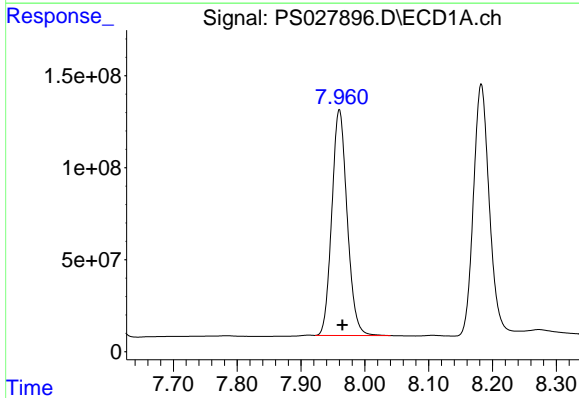
R.T.: 7.600 min
 Delta R.T.: 0.001 min
 Response: 769439351
 Conc: 72.65 ug/ml

Instrument :
 ECD_S
 ClientSampleId :
 HSTDCCC750



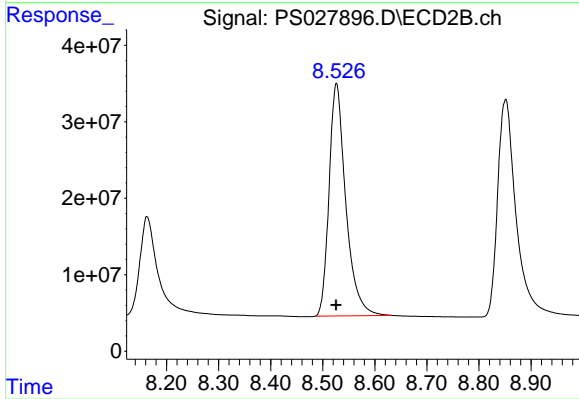
#7 MCPA

R.T.: 8.163 min
 Delta R.T.: 0.003 min
 Response: 323333954
 Conc: 64.64 ug/ml



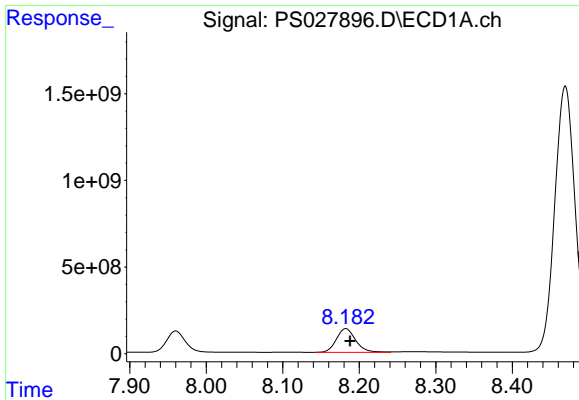
#8 DICHLORPROP

R.T.: 7.960 min
 Delta R.T.: -0.005 min
 Response: 2050772452
 Conc: 716.61 ng/ml



#8 DICHLORPROP

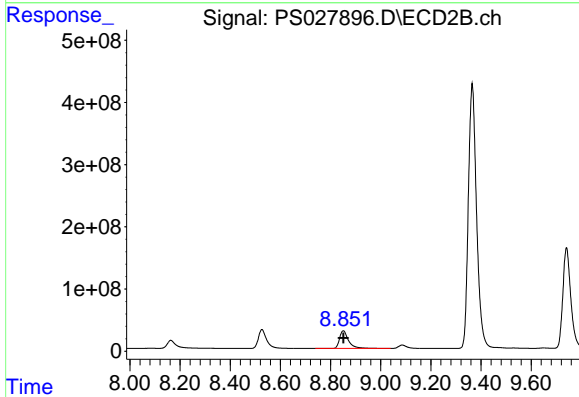
R.T.: 8.526 min
 Delta R.T.: 0.000 min
 Response: 678702679
 Conc: 687.68 ng/ml



#9 2,4-D

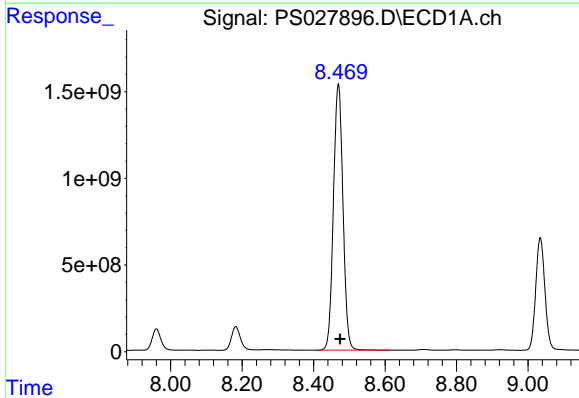
R.T.: 8.182 min
 Delta R.T.: -0.006 min
 Response: 2386084840
 Conc: 709.29 ng/ml

Instrument :
 ECD_S
 ClientSampleId :
 HSTDCCC750



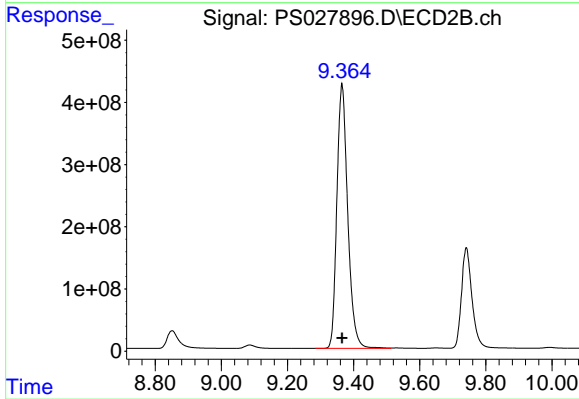
#9 2,4-D

R.T.: 8.851 min
 Delta R.T.: 0.000 min
 Response: 700853797
 Conc: 699.26 ng/ml



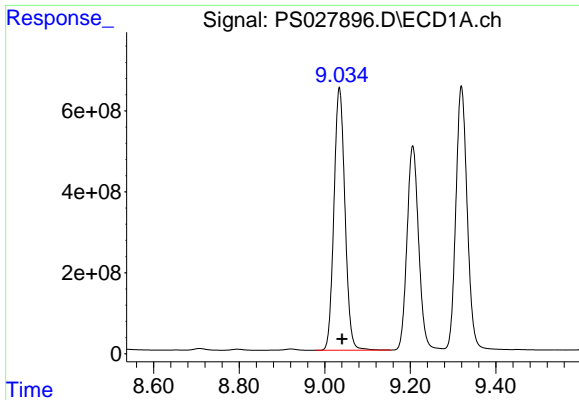
#10 Pentachlorophenol

R.T.: 8.469 min
 Delta R.T.: -0.005 min
 Response: 28436142567
 Conc: 731.88 ng/ml



#10 Pentachlorophenol

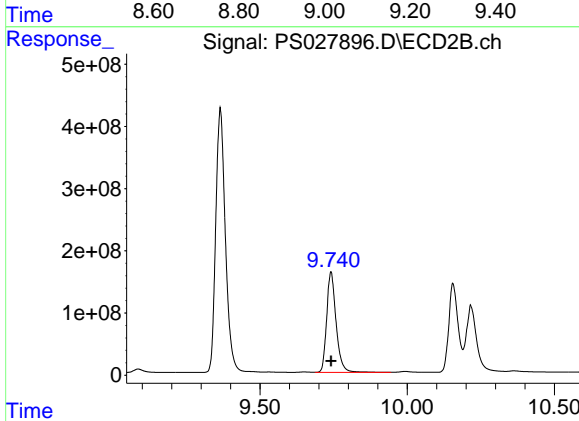
R.T.: 9.365 min
 Delta R.T.: 0.000 min
 Response: 9683885257
 Conc: 700.77 ng/ml



#11 2,4,5-TP (SILVEX)

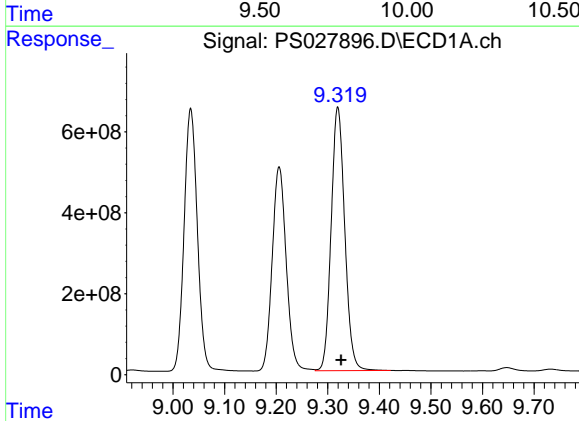
R.T.: 9.034 min
 Delta R.T.: -0.007 min
 Response: 11569737728
 Conc: 733.85 ng/ml

Instrument :
 ECD_S
 ClientSampleId :
 HSTDCCC750



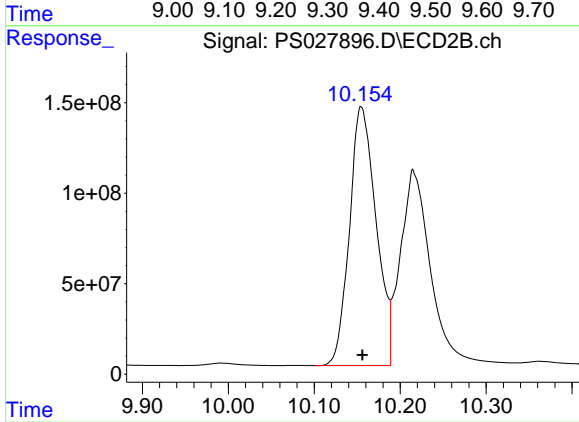
#11 2,4,5-TP (SILVEX)

R.T.: 9.741 min
 Delta R.T.: 0.000 min
 Response: 3587215521
 Conc: 724.07 ng/ml



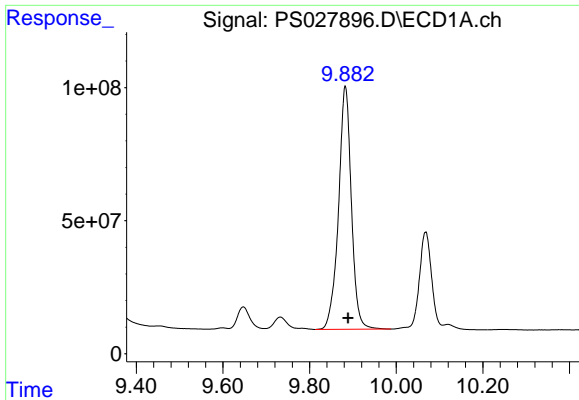
#12 2,4,5-T

R.T.: 9.320 min
 Delta R.T.: -0.006 min
 Response: 11907240714
 Conc: 736.26 ng/ml



#12 2,4,5-T

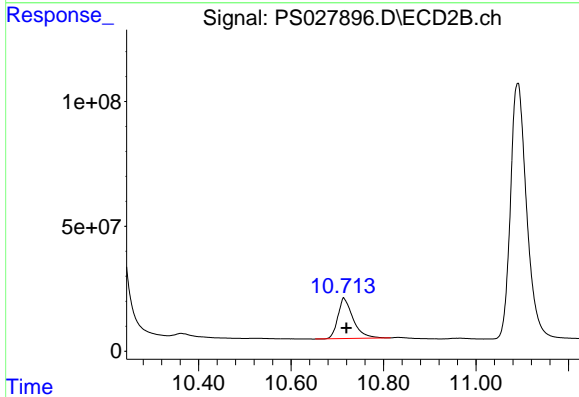
R.T.: 10.155 min
 Delta R.T.: -0.001 min
 Response: 3085054318
 Conc: 716.58 ng/ml



#13 2,4-DB

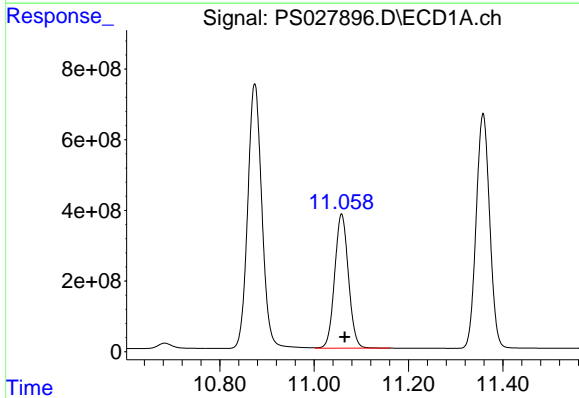
R.T.: 9.883 min
 Delta R.T.: -0.006 min
 Response: 1884189759
 Conc: 726.45 ng/ml

Instrument :
 ECD_S
 ClientSampleId :
 HSTDCCC750



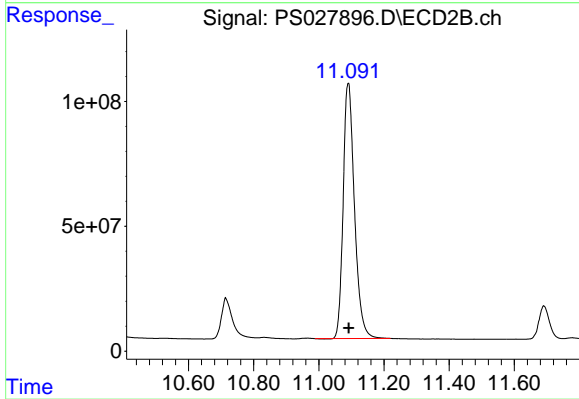
#13 2,4-DB

R.T.: 10.715 min
 Delta R.T.: -0.005 min
 Response: 369806279
 Conc: 730.34 ng/ml



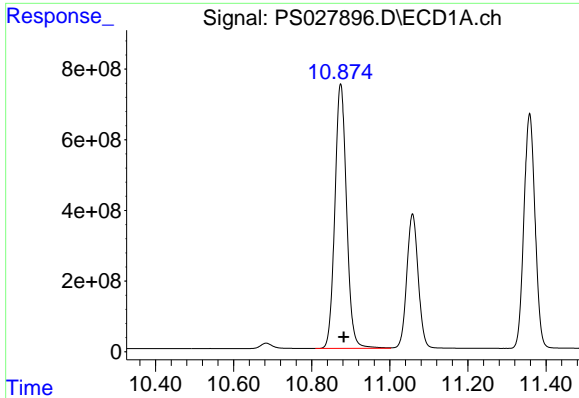
#14 DINOSEB

R.T.: 11.058 min
 Delta R.T.: -0.007 min
 Response: 7668807919
 Conc: 727.38 ng/ml



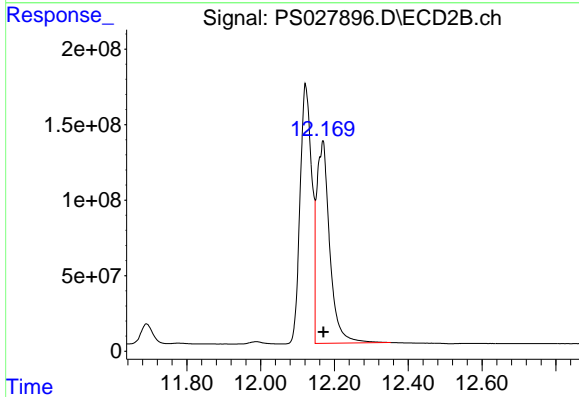
#14 DINOSEB

R.T.: 11.090 min
 Delta R.T.: -0.002 min
 Response: 2465791802
 Conc: 729.95 ng/ml

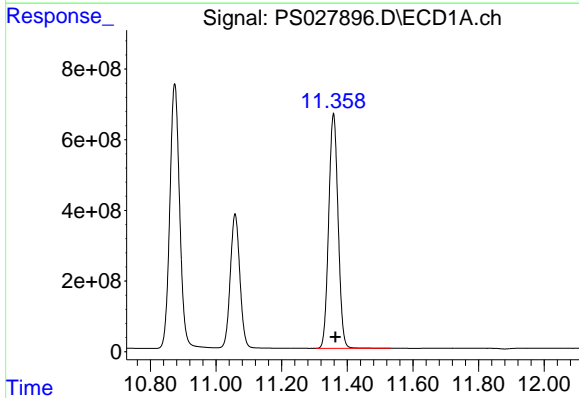


#15 Picloram
 R.T.: 10.874 min
 Delta R.T.: -0.007 min
 Response: 15603190271
 Conc: 724.81 ng/ml

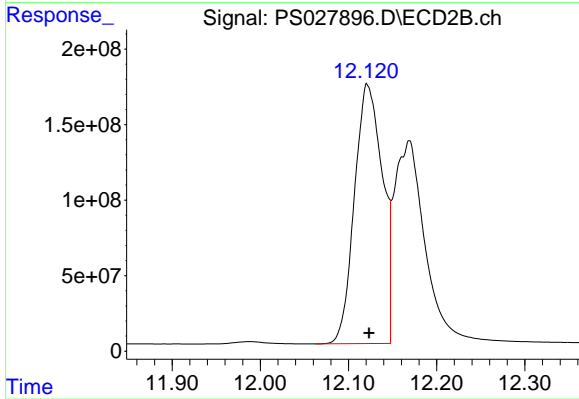
Instrument :
 ECD_S
 ClientSampleId :
 HSTDCCC750



#15 Picloram
 R.T.: 12.169 min
 Delta R.T.: -0.002 min
 Response: 3288930422
 Conc: 787.31 ng/ml



#16 DCPA
 R.T.: 11.358 min
 Delta R.T.: -0.006 min
 Response: 13179107335
 Conc: 742.03 ng/ml



#16 DCPA
 R.T.: 12.122 min
 Delta R.T.: -0.001 min
 Response: 3772484651
 Conc: 785.88 ng/ml