

Data Path : Z:\pestpcbsrv\HPCHEM1\ECD_S\Data\PS101320\
 Data File : PS012819.D
 Signal(s) : Signal #1: ECD1A.ch Signal #2: ECD2B.ch
 Acq On : 13 Oct 2020 10:29
 Operator : DD\AJ
 Sample : HSTDCCC750
 Misc :
 ALS Vial : 3 Sample Multiplier: 1

Instrument :
 ECD_S
 ClientSampleId :

Integration File signal 1: autoint1.e
 Integration File signal 2: autoint2.e
 Quant Time: Oct 13 12:55:11 2020
 Quant Method : Z:\pestpcbsrv\HPCHEM1\ECD_S\Method\PS092220.M
 Quant Title : 8080.M
 QLast Update : Wed Sep 23 04:57:25 2020
 Response via : Initial Calibration
 Integrator: ChemStation

Volume Inj. : 2 µl
 Signal #1 Phase : Rtx-CLPesticides Signal #2 Phase: Rtx-CLPesticides2
 Signal #1 Info : 30M x 0.32mm x0.5 Signal #2 Info : 30M x 0.32mm x 0.25µm

	Compound	RT#1	RT#2	Resp#1	Resp#2	ng/ml	ng/ml

System Monitoring Compounds							
4) S	2,4-DCAA	7.214	6.911	710.7E6	322.2E6	725.661	700.393
Target Compounds							
1) T	Dalapon	3.034	2.625	706.7E6	360.5E6	621.886	602.702
2) T	3,5-DICHL...	6.430	6.064	907.0E6	466.6E6	672.603	654.412
3) T	4-Nitroph...	7.048	6.522	308.1E6	171.9E6	633.648	615.064
5) T	DICAMBA	7.404	7.078	2656.8E6	1285.5E6	688.700	674.120
6) T	MCP P	7.572	7.173	203.0E6	101.6E6	69.592	67.137
7) T	MCPA	7.721	7.388	281.2E6	155.5E6	67.429	64.859
8) T	DICHLORPROP	8.095	7.704	660.6E6	342.3E6	682.680	662.856
9) T	2,4-D	8.327	8.000	764.3E6	413.1E6	673.131	659.640
10) T	Pentachlo...	8.634	8.426	9748.5E6	4253.1E6	705.399	697.292
11) T	2,4,5-TP ...	9.184	8.788	3845.8E6	1809.5E6	693.573	685.848
12) T	2,4,5-T	9.471	9.168	3863.2E6	1741.5E6	687.247	677.277
13) T	2,4-DB	10.024	9.675	628.1E6	235.8E6	663.734	629.779
14) T	DINOSEB	11.179	10.004	3149.6E6	1309.7E6	693.714	683.769
15) T	Picloram	11.011	10.997	4480.6E6	2473.5E6	622.289	627.556
16) T	DCPA	11.445	10.931	4909.9E6	2338.1E6	695.141	703.101

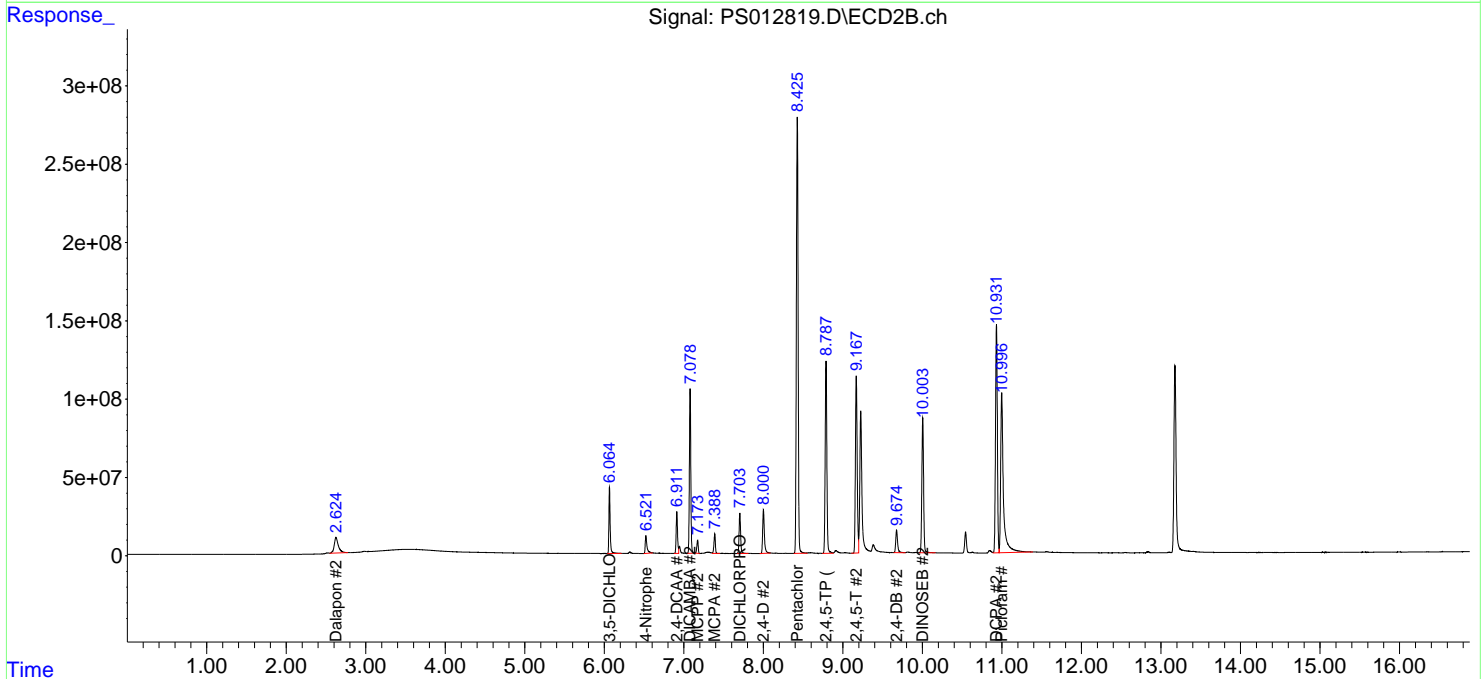
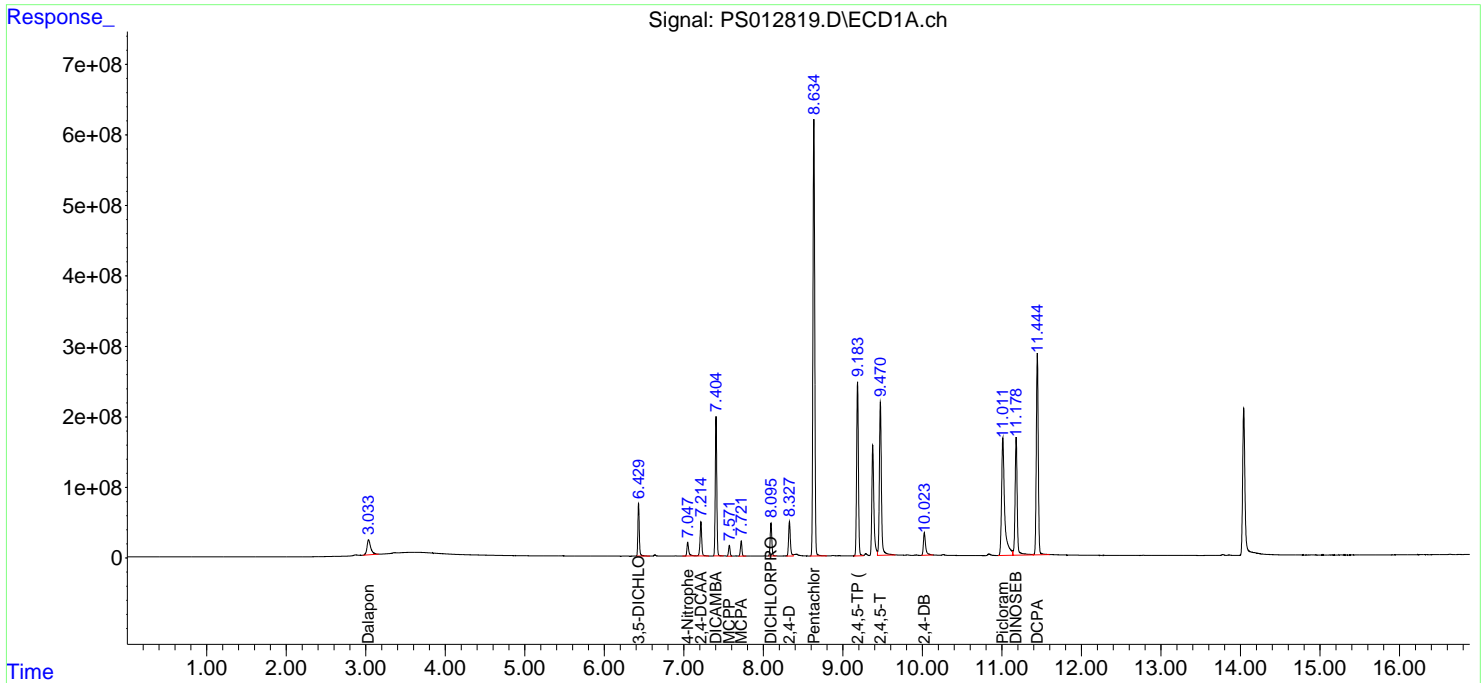
(f)=RT Delta > 1/2 Window (#)=Amounts differ by > 25% (m)=manual int.

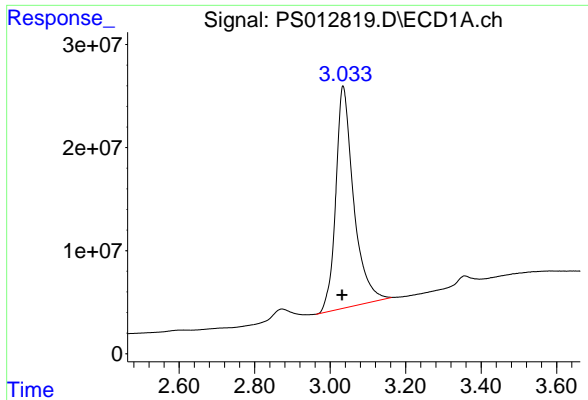
Data Path : Z:\pestpcbsrv\HPCHEM1\ECD_S\Data\PS101320\
 Data File : PS012819.D
 Signal(s) : Signal #1: ECD1A.ch Signal #2: ECD2B.ch
 Acq On : 13 Oct 2020 10:29
 Operator : DD\AJ
 Sample : HSTDCCC750
 Misc :
 ALS Vial : 3 Sample Multiplier: 1

Instrument :
 ECD_S
 ClientSampled :

Integration File signal 1: autoint1.e
 Integration File signal 2: autoint2.e
 Quant Time: Oct 13 12:55:11 2020
 Quant Method : Z:\pestpcbsrv\HPCHEM1\ECD_S\Method\PS092220.M
 Quant Title : 8080.M
 QLast Update : Wed Sep 23 04:57:25 2020
 Response via : Initial Calibration
 Integrator: ChemStation

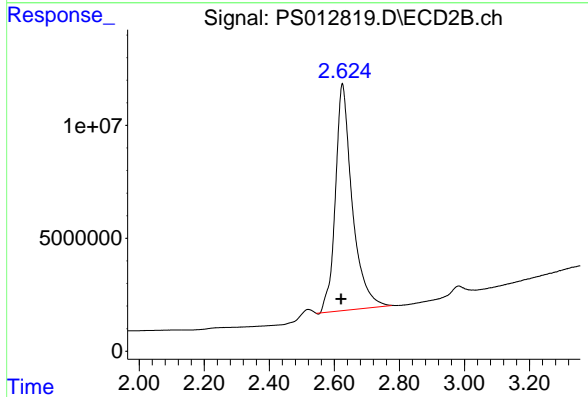
Volume Inj. : 2 µl
 Signal #1 Phase : Rtx-CLPesticides Signal #2 Phase: Rtx-CLPesticides2
 Signal #1 Info : 30M x 0.32mm x0.5 Signal #2 Info : 30M x 0.32mm x 0.25µm



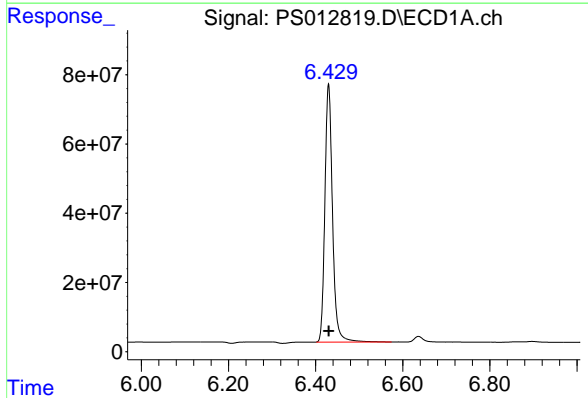


#1 Dalapon
 R.T.: 3.034 min
 Delta R.T.: 0.002 min
 Response: 706690574
 Conc: 621.89 ng/ml

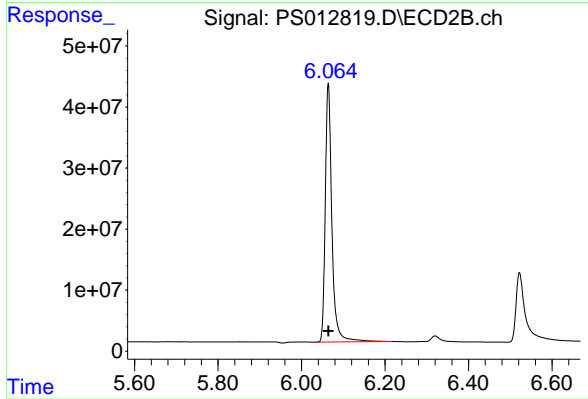
Instrument :
 ECD_S
 ClientSampled :



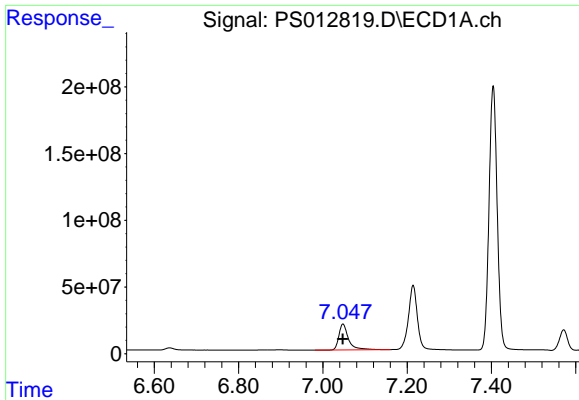
#1 Dalapon
 R.T.: 2.625 min
 Delta R.T.: 0.004 min
 Response: 360530452
 Conc: 602.70 ng/ml



#2 3,5-DICHLOROBENZOIC ACID
 R.T.: 6.430 min
 Delta R.T.: 0.000 min
 Response: 906968772
 Conc: 672.60 ng/ml

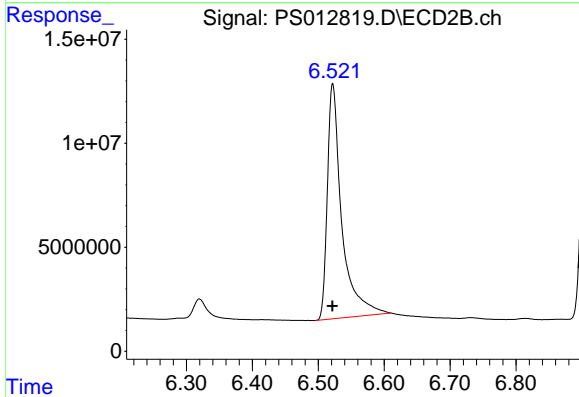


#2 3,5-DICHLOROBENZOIC ACID
 R.T.: 6.064 min
 Delta R.T.: 0.000 min
 Response: 466569400
 Conc: 654.41 ng/ml

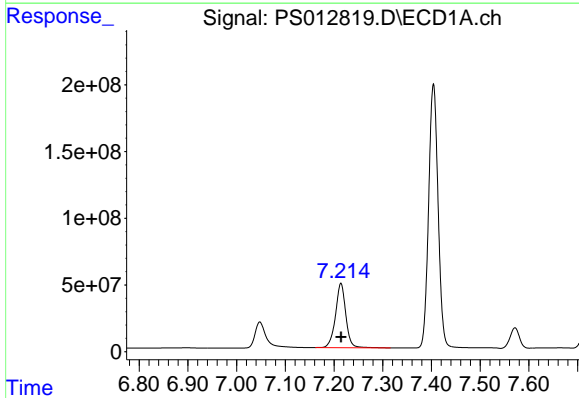


#3 4-Nitrophenol
 R.T.: 7.048 min
 Delta R.T.: 0.000 min
 Response: 308120113
 Conc: 633.65 ng/ml

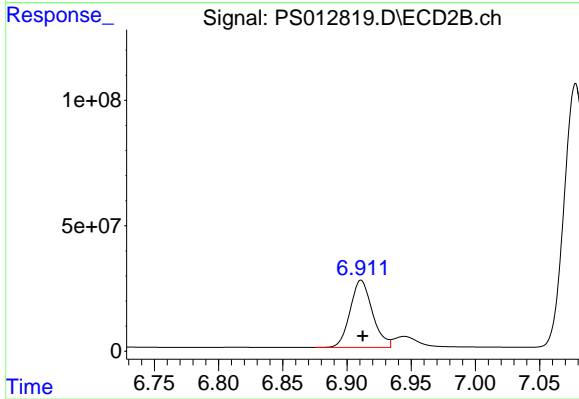
Instrument :
 ECD_S
 ClientSampleId :



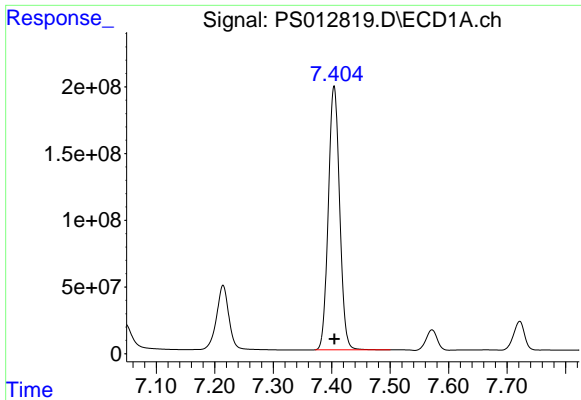
#3 4-Nitrophenol
 R.T.: 6.522 min
 Delta R.T.: 0.000 min
 Response: 171854445
 Conc: 615.06 ng/ml



#4 2,4-DCAA
 R.T.: 7.214 min
 Delta R.T.: 0.000 min
 Response: 710747731
 Conc: 725.66 ng/ml



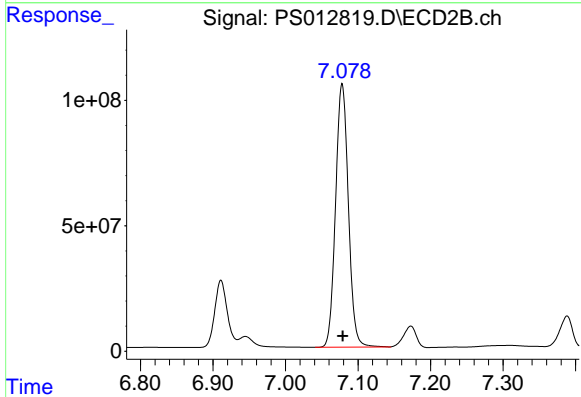
#4 2,4-DCAA
 R.T.: 6.911 min
 Delta R.T.: -0.001 min
 Response: 322192424
 Conc: 700.39 ng/ml



#5 DICAMBA

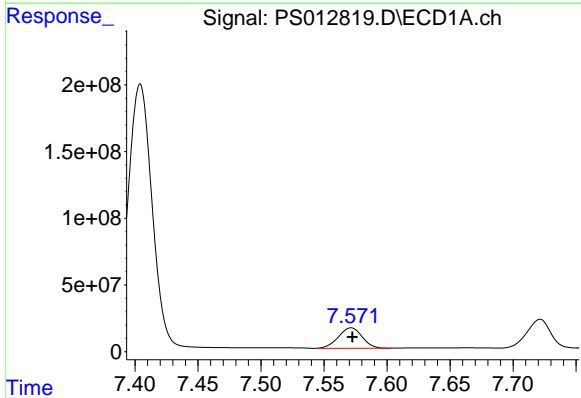
R.T.: 7.404 min
 Delta R.T.: 0.000 min
 Response: 2656782892
 Conc: 688.70 ng/ml

Instrument :
 ECD_S
 ClientSampleId :



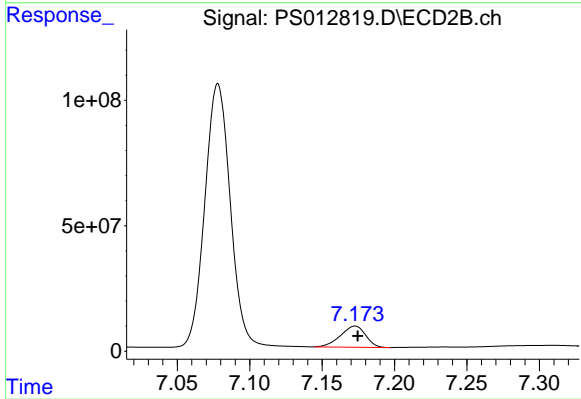
#5 DICAMBA

R.T.: 7.078 min
 Delta R.T.: 0.000 min
 Response: 1285489787
 Conc: 674.12 ng/ml



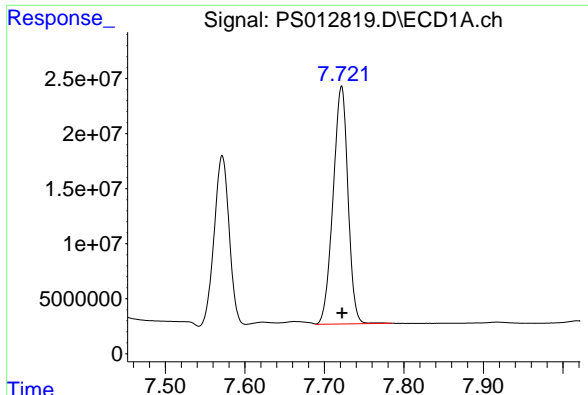
#6 MCPP

R.T.: 7.572 min
 Delta R.T.: -0.001 min
 Response: 203043040
 Conc: 69.59 ug/ml



#6 MCPP

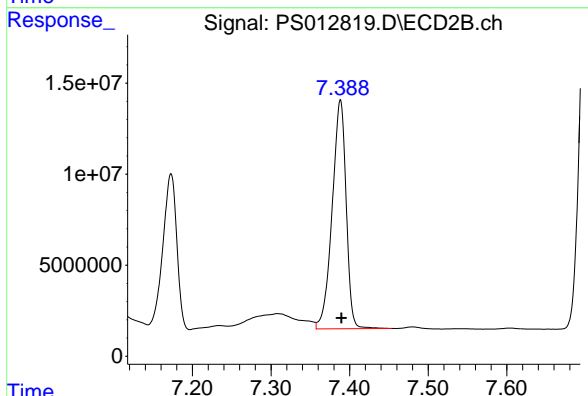
R.T.: 7.173 min
 Delta R.T.: -0.002 min
 Response: 101554680
 Conc: 67.14 ug/ml



#7 MCPA

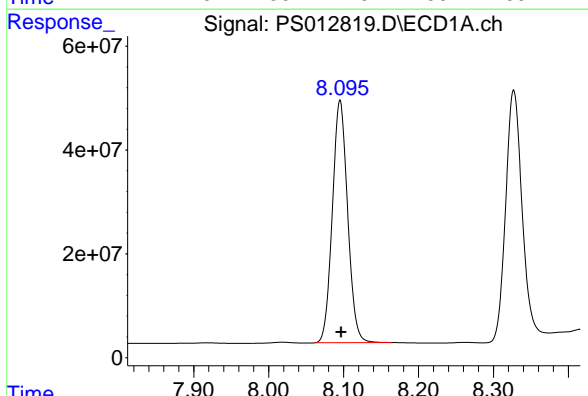
R.T.: 7.721 min
 Delta R.T.: 0.000 min
 Response: 281224071
 Conc: 67.43 ug/ml

Instrument :
 ECD_S
 ClientSampled :



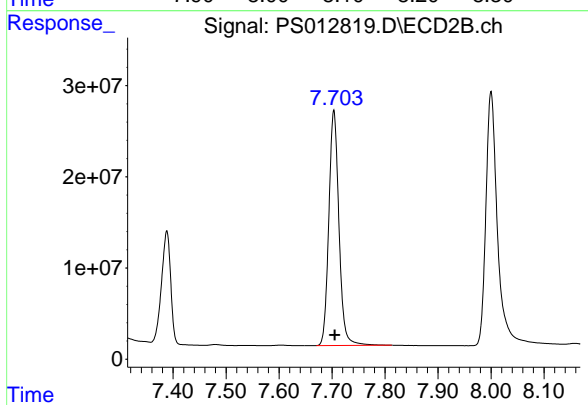
#7 MCPA

R.T.: 7.388 min
 Delta R.T.: -0.001 min
 Response: 155485193
 Conc: 64.86 ug/ml



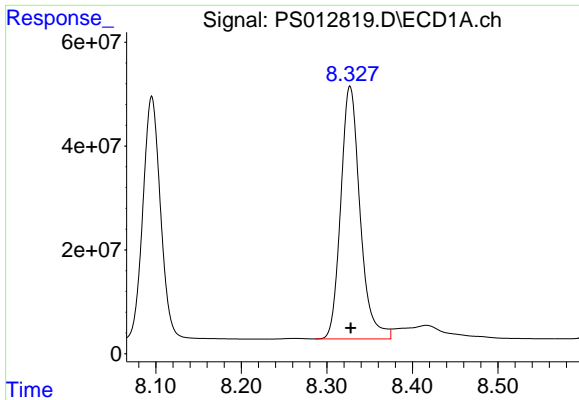
#8 DICHLORPROP

R.T.: 8.095 min
 Delta R.T.: -0.002 min
 Response: 660623712
 Conc: 682.68 ng/ml



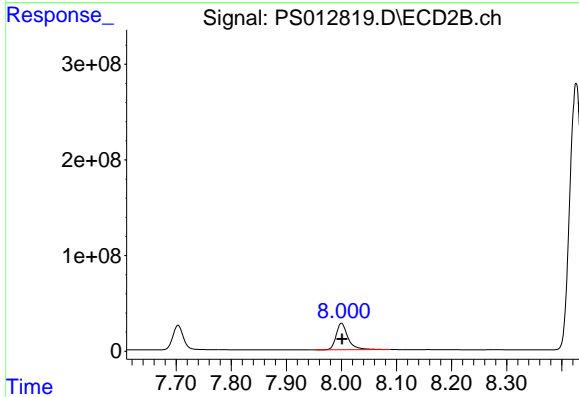
#8 DICHLORPROP

R.T.: 7.704 min
 Delta R.T.: -0.002 min
 Response: 342250497
 Conc: 662.86 ng/ml

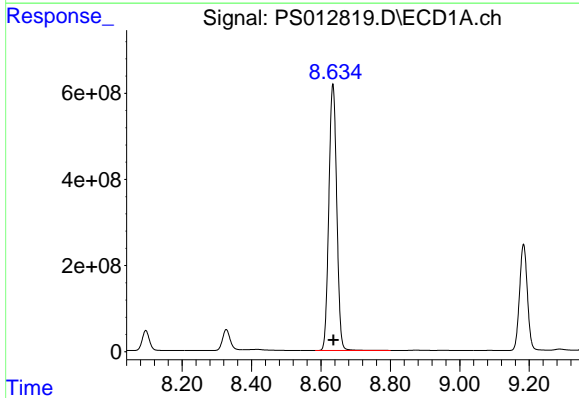


#9 2,4-D
R.T.: 8.327 min
Delta R.T.: 0.000 min
Response: 764287177
Conc: 673.13 ng/ml

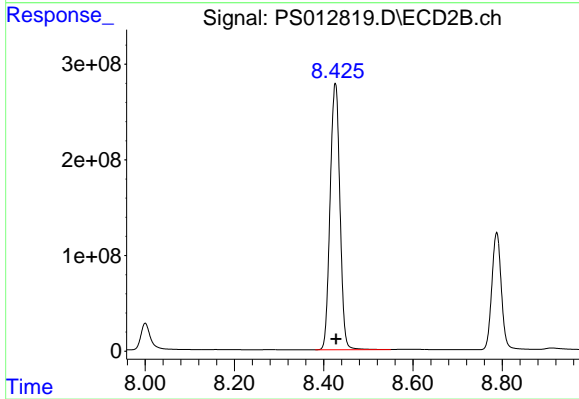
Instrument :
ECD_S
ClientSampled :



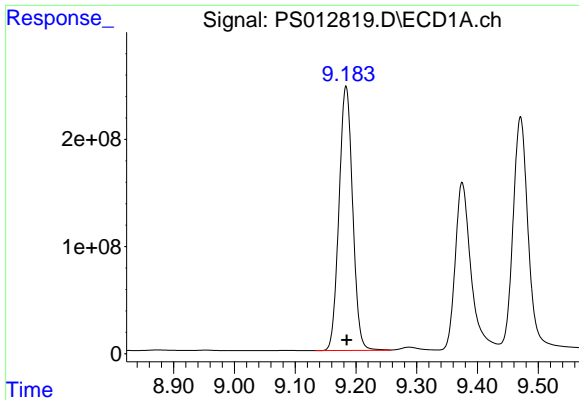
#9 2,4-D
R.T.: 8.000 min
Delta R.T.: -0.001 min
Response: 413093854
Conc: 659.64 ng/ml



#10 Pentachlorophenol
R.T.: 8.634 min
Delta R.T.: -0.002 min
Response: 9748472602
Conc: 705.40 ng/ml

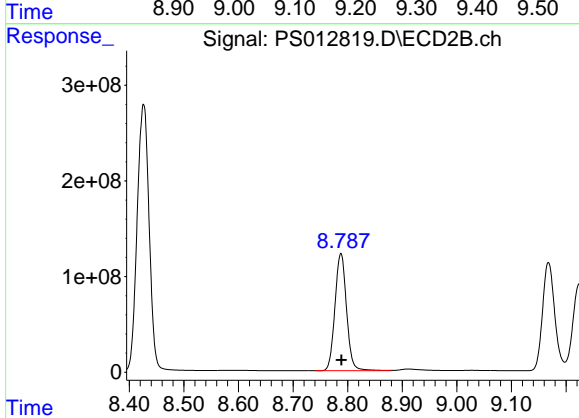


#10 Pentachlorophenol
R.T.: 8.426 min
Delta R.T.: -0.002 min
Response: 4253061193
Conc: 697.29 ng/ml

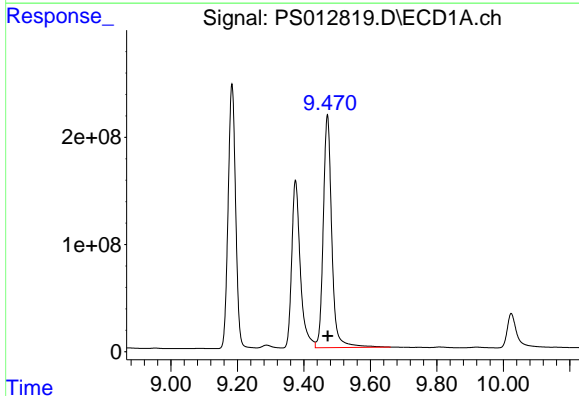


#11 2,4,5-TP (SILVEX)
 R.T.: 9.184 min
 Delta R.T.: -0.001 min
 Response: 3845755561
 Conc: 693.57 ng/ml

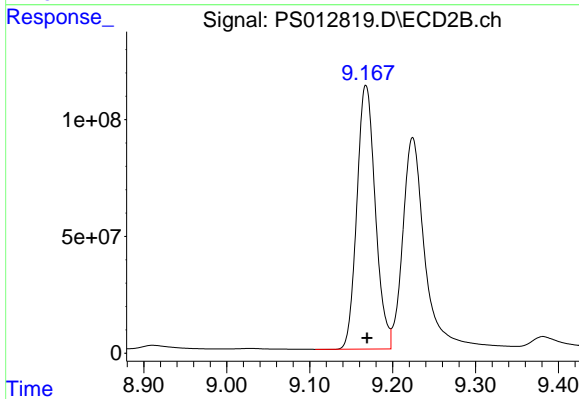
Instrument :
 ECD_S
 ClientSampled :



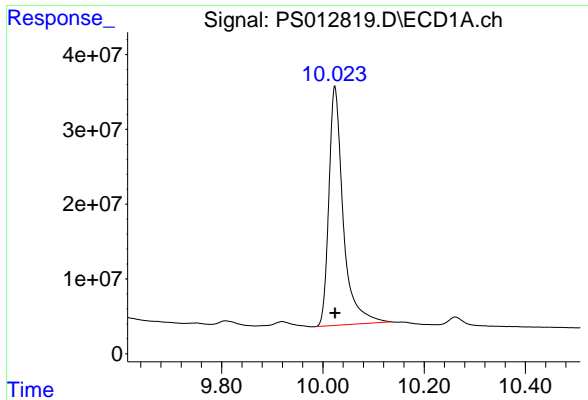
#11 2,4,5-TP (SILVEX)
 R.T.: 8.788 min
 Delta R.T.: -0.001 min
 Response: 1809535313
 Conc: 685.85 ng/ml



#12 2,4,5-T
 R.T.: 9.471 min
 Delta R.T.: 0.000 min
 Response: 3863161721
 Conc: 687.25 ng/ml



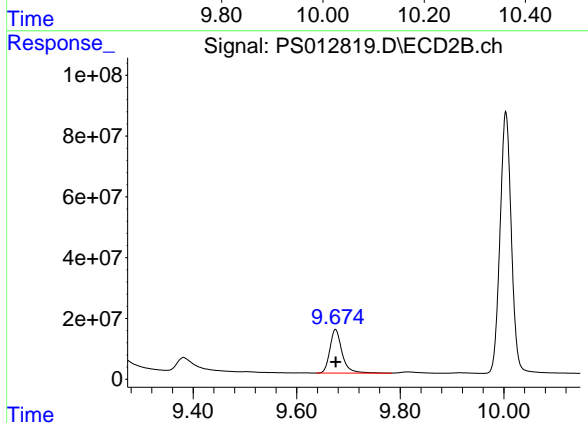
#12 2,4,5-T
 R.T.: 9.168 min
 Delta R.T.: -0.001 min
 Response: 1741475138
 Conc: 677.28 ng/ml



#13 2,4-DB

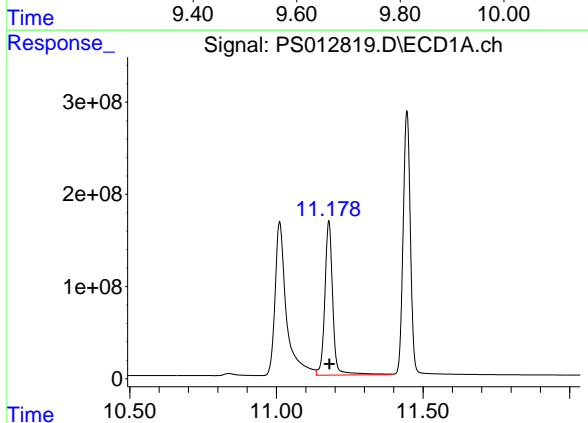
R.T.: 10.024 min
 Delta R.T.: 0.000 min
 Response: 628092259
 Conc: 663.73 ng/ml

Instrument :
 ECD_S
 ClientSampled :



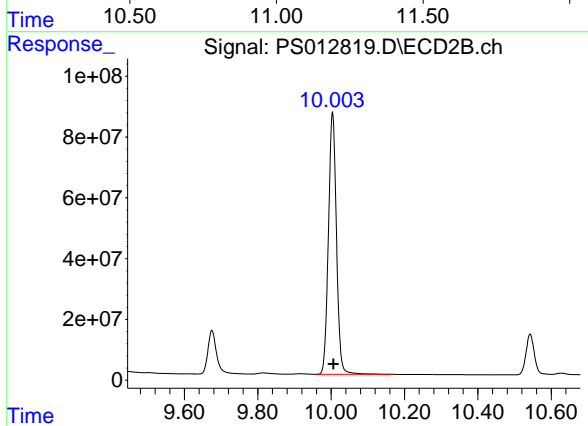
#13 2,4-DB

R.T.: 9.675 min
 Delta R.T.: 0.000 min
 Response: 235769573
 Conc: 629.78 ng/ml



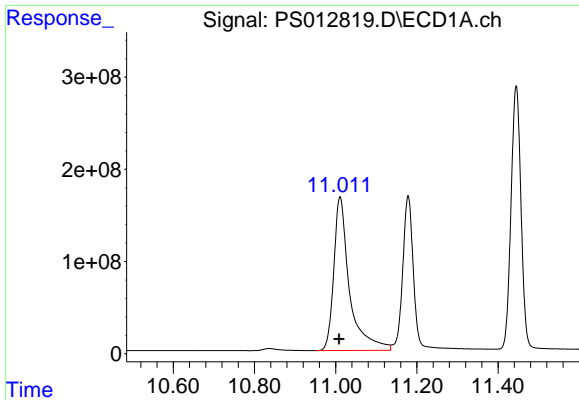
#14 DINOSEB

R.T.: 11.179 min
 Delta R.T.: -0.002 min
 Response: 3149624422
 Conc: 693.71 ng/ml



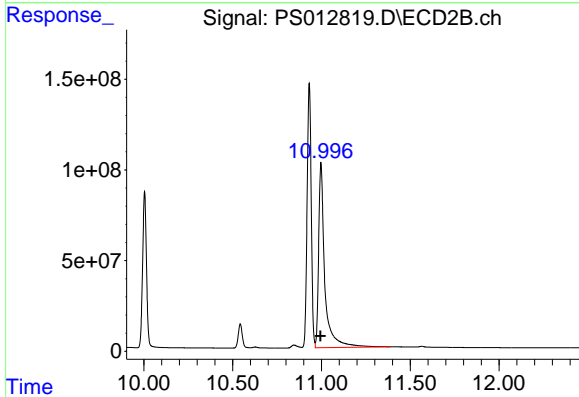
#14 DINOSEB

R.T.: 10.004 min
 Delta R.T.: -0.002 min
 Response: 1309712588
 Conc: 683.77 ng/ml

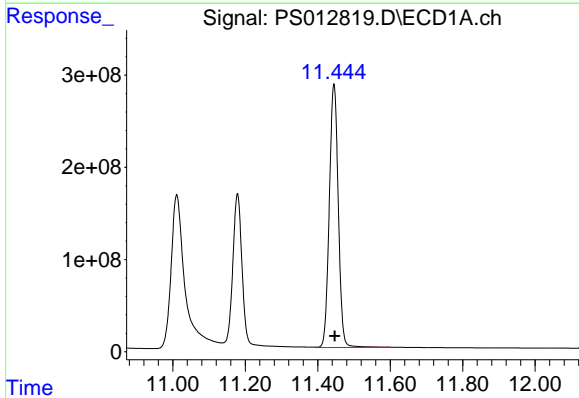


#15 Picloram
 R.T.: 11.011 min
 Delta R.T.: 0.002 min
 Response: 4480569232
 Conc: 622.29 ng/ml

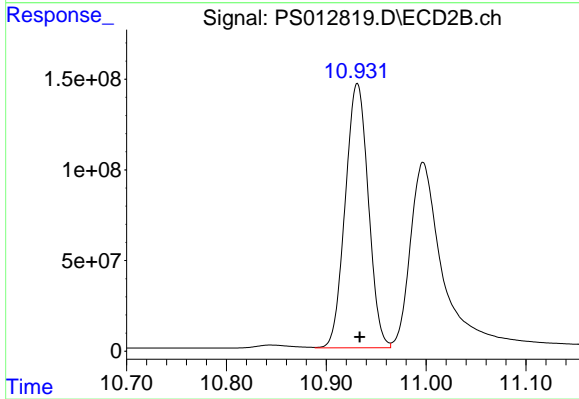
Instrument :
 ECD_S
 ClientSampled :



#15 Picloram
 R.T.: 10.997 min
 Delta R.T.: 0.002 min
 Response: 2473465742
 Conc: 627.56 ng/ml



#16 DCPA
 R.T.: 11.445 min
 Delta R.T.: -0.002 min
 Response: 4909947801
 Conc: 695.14 ng/ml



#16 DCPA
 R.T.: 10.931 min
 Delta R.T.: -0.002 min
 Response: 2338111742
 Conc: 703.10 ng/ml