

Data Path : Z:\pestpcbsrv\HPCHEM1\ECD_S\Data\PS101518\
 Data File : PS002017.D
 Signal(s) : Signal #1: ECD1A.ch Signal #2: ECD2B.ch
 Acq On : 15 Oct 2018 21:27
 Operator : EI\SJ
 Sample : HSTDICV750
 Misc :
 ALS Vial : 8 Sample Multiplier: 1

Instrument :
 ECD_S
 ClientSampleId :

Integration File signal 1: autoint1.e
 Integration File signal 2: autoint2.e
 Quant Time: Oct 17 09:00:04 2018
 Quant Method : Z:\pestpcbsrv\HPCHEM1\ECD_S\Method\PS101518.M
 Quant Title : 8080.M
 QLast Update : Wed Oct 17 08:59:14 2018
 Response via : Initial Calibration
 Integrator: ChemStation

Volume Inj. : 2 µl
 Signal #1 Phase : Rtx-CLPesticides Signal #2 Phase: Rtx-CLPesticides2
 Signal #1 Info : 30M x 0.32mm x0.5 Signal #2 Info : 30M x 0.32mm x 0.25µm

	Compound	RT#1	RT#2	Resp#1	Resp#2	ng/ml	ng/ml

System Monitoring Compounds							
4) S	2,4-DCAA	11.488	10.981	159.2E6	183.5E6	752.859	769.423
Target Compounds							
1) T	Dalapon	2.967	2.430	214.3E6	206.5E6	702.375	707.366
2) T	3,5-DICHL...	9.911	9.132	216.2E6	203.3E6	711.660	695.254
3) T	4-Nitroph...	11.078	10.127	95383726	86704271	706.886	705.160
5) T	DICAMBA	11.798	11.265	569.4E6	599.8E6	723.401	729.925
6) T	MCP	12.137	11.493	41140647	41442946	73.472	75.934
7) T	MCPA	12.388	11.868	48535185	23085036	52.509	28.040 #
8) T	DICHLORPROP	12.989	12.390	155.3E6	154.4E6	716.460	704.628
9) T	2,4-D	13.349	12.861	195.8E6	216.9E6	732.985	725.968
10) T	Pentachlo...	13.727	13.410	2089.1E6	2335.0E6	738.201	737.438
11) T	2,4,5-TP ...	14.599	14.027	801.8E6	937.6E6	733.043	738.102
12) T	2,4,5-T	14.997	14.558	860.5E6	919.2E6	733.747	839.228
13) T	2,4-DB	15.745	15.243	114.6E6	117.2E6	729.786	744.491
14) T	DINOSEB	17.232	15.672	592.8E6	638.5E6	708.092	721.979
15) T	Picloram	16.995	16.853	1255.3E6	1170.3E6	734.205	737.776
16) T	DCPA	17.573	16.853	1027.9E6	1170.3E6	741.565	646.853

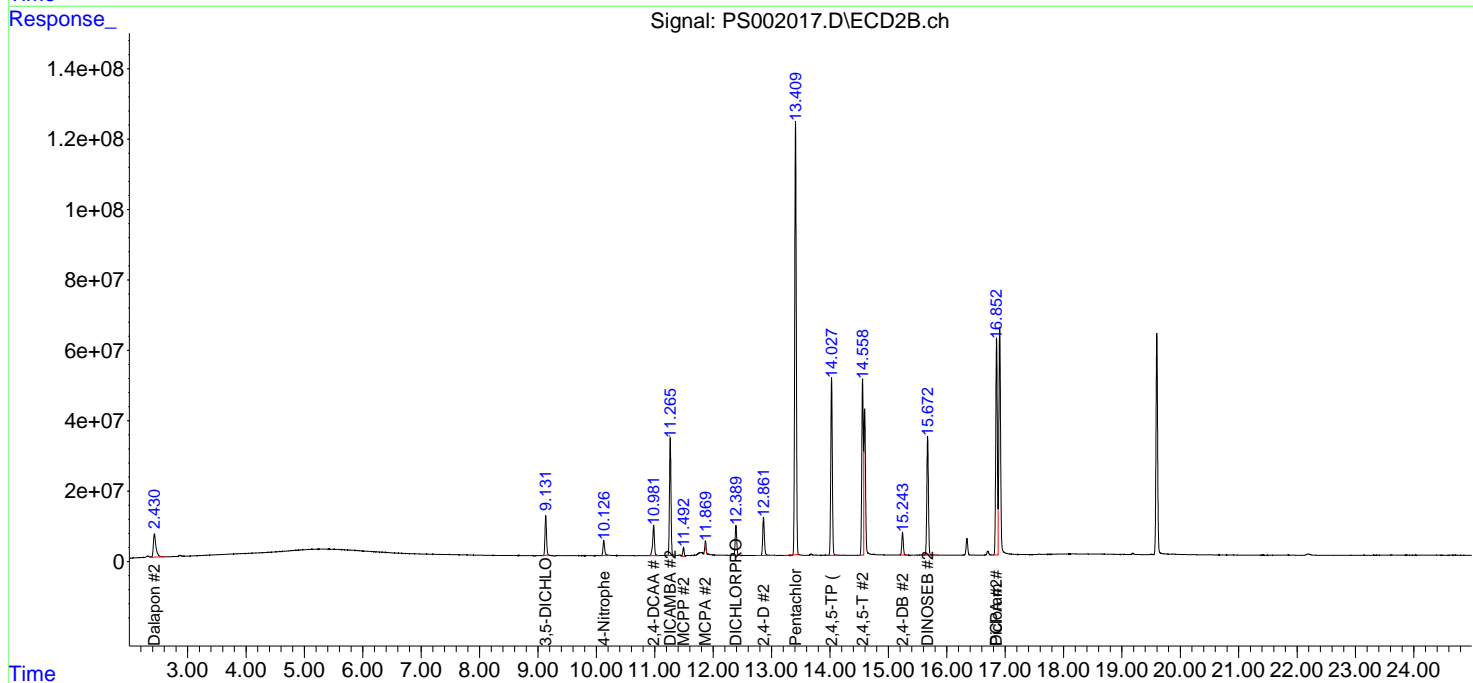
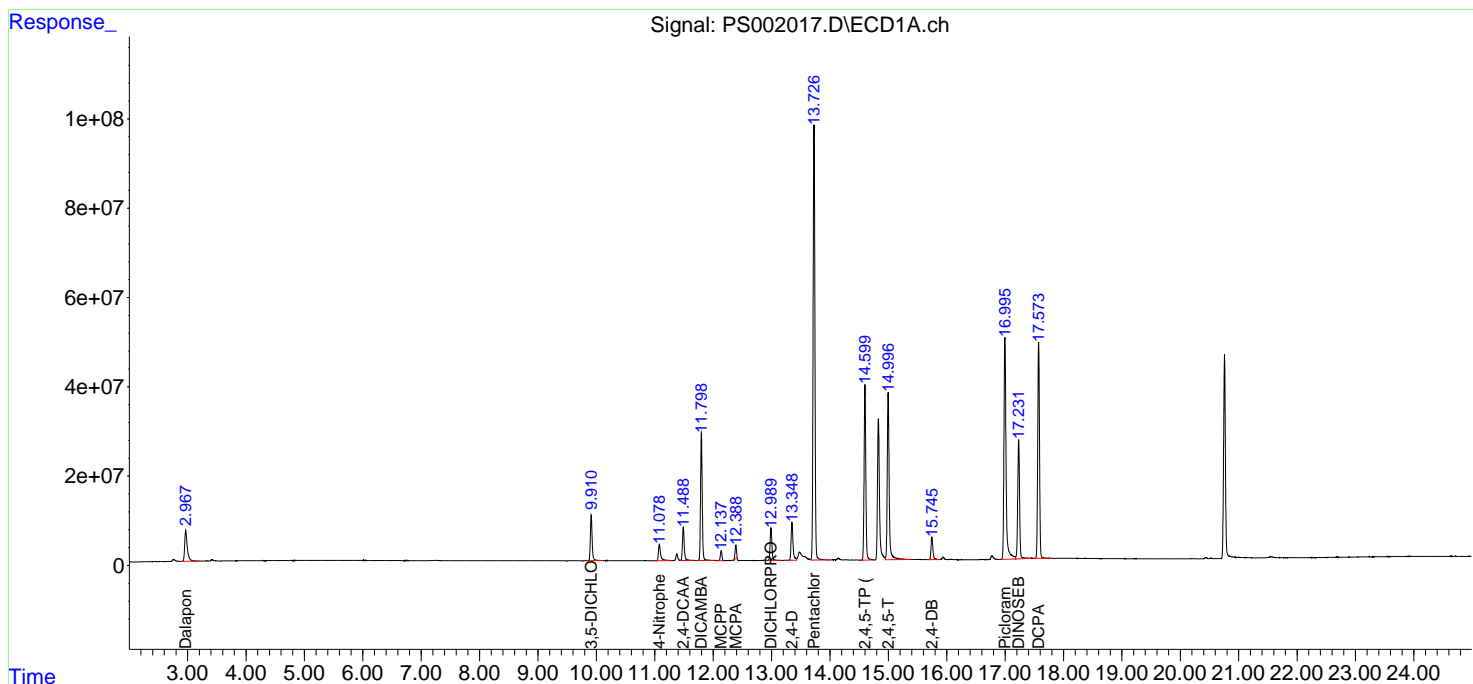
(f)=RT Delta > 1/2 Window (#)=Amounts differ by > 25% (m)=manual int.

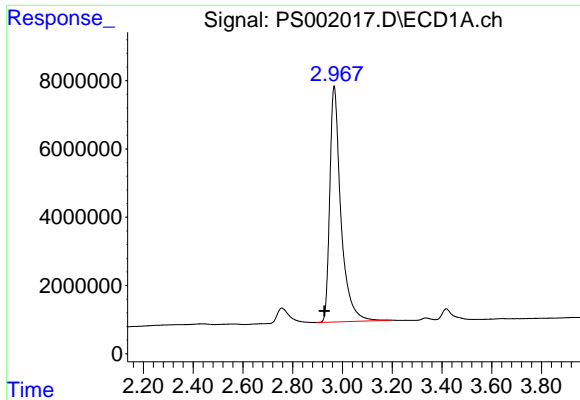
Data Path : Z:\pestpcbsrv\HPCHEM1\ECD_S\Data\PS101518\
 Data File : PS002017.D
 Signal(s) : Signal #1: ECD1A.ch Signal #2: ECD2B.ch
 Acq On : 15 Oct 2018 21:27
 Operator : EI\SJ
 Sample : HSTDICV750
 Misc :
 ALS Vial : 8 Sample Multiplier: 1

Instrument :
 ECD_S
 ClientSampled :

Integration File signal 1: autoint1.e
 Integration File signal 2: autoint2.e
 Quant Time: Oct 17 09:00:04 2018
 Quant Method : Z:\pestpcbsrv\HPCHEM1\ECD_S\Method\PS101518.M
 Quant Title : 8080.M
 QLast Update : Wed Oct 17 08:59:14 2018
 Response via : Initial Calibration
 Integrator: ChemStation

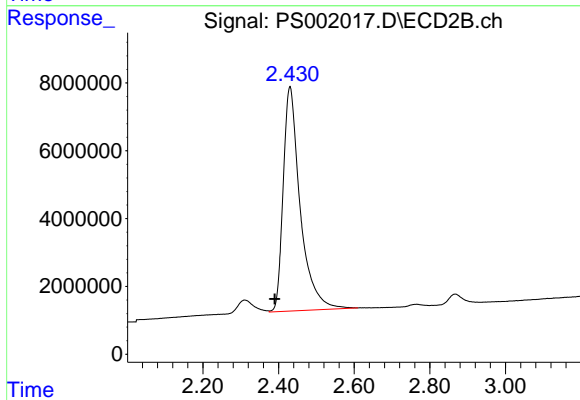
Volume Inj. : 2 µl
 Signal #1 Phase : Rtx-CLPesticides Signal #2 Phase: Rtx-CLPesticides2
 Signal #1 Info : 30M x 0.32mm x0.5 Signal #2 Info : 30M x 0.32mm x 0.25µm



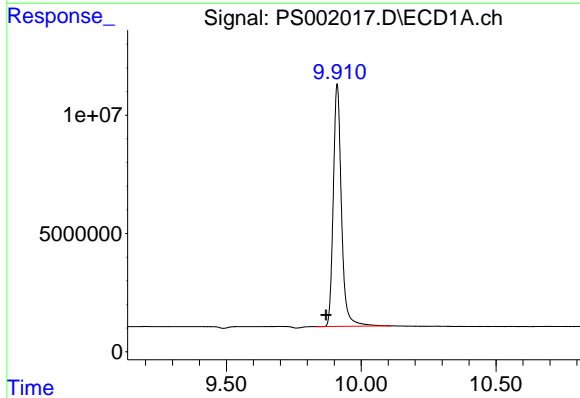


#1 Dalapon
 R.T.: 2.967 min
 Delta R.T.: 0.040 min
 Response: 214334709
 Conc: 702.37 ng/ml

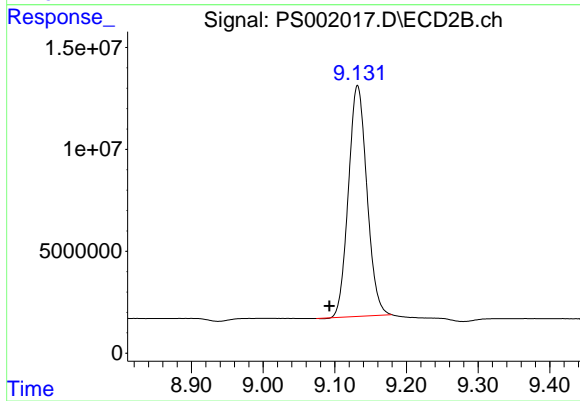
Instrument :
 ECD_S
 ClientSampled :



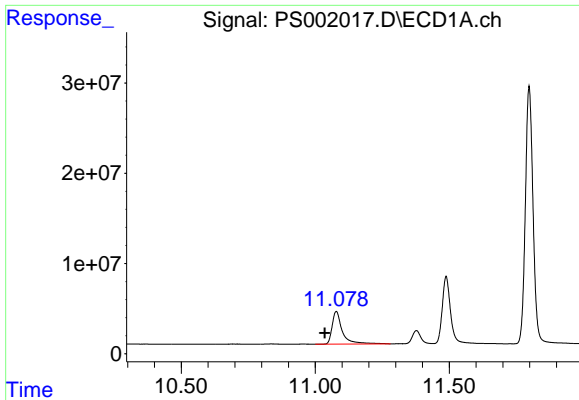
#1 Dalapon
 R.T.: 2.430 min
 Delta R.T.: 0.040 min
 Response: 206527354
 Conc: 707.37 ng/ml



#2 3,5-DICHLOROBENZOIC ACID
 R.T.: 9.911 min
 Delta R.T.: 0.041 min
 Response: 216192729
 Conc: 711.66 ng/ml

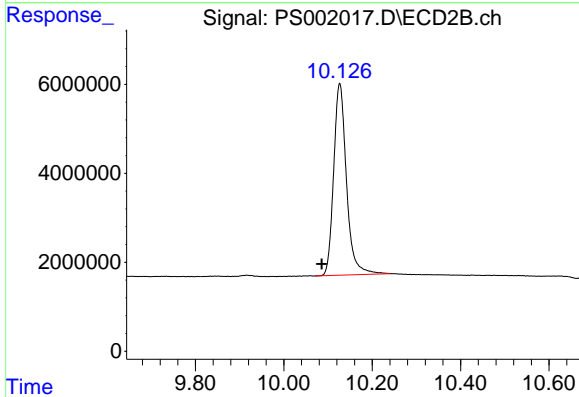


#2 3,5-DICHLOROBENZOIC ACID
 R.T.: 9.132 min
 Delta R.T.: 0.039 min
 Response: 203315809
 Conc: 695.25 ng/ml

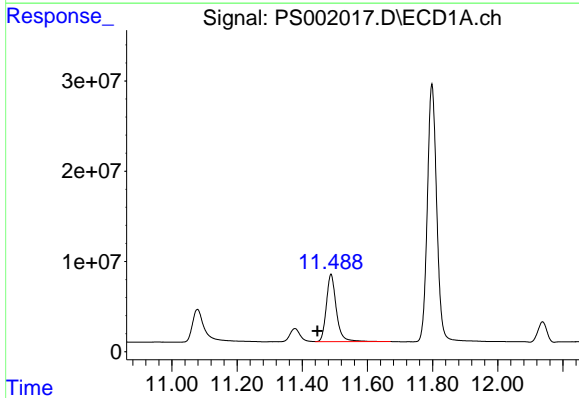


#3 4-Nitrophenol
R.T.: 11.078 min
Delta R.T.: 0.042 min
Response: 95383726
Conc: 706.89 ng/ml

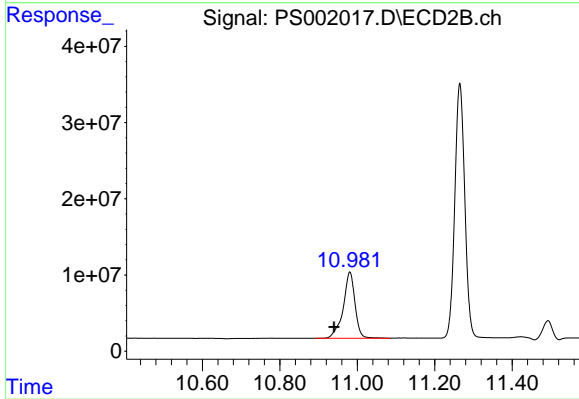
Instrument :
ECD_S
ClientSampleId :



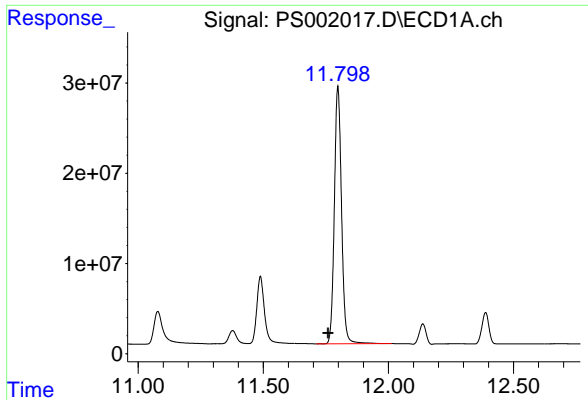
#3 4-Nitrophenol
R.T.: 10.127 min
Delta R.T.: 0.040 min
Response: 86704271
Conc: 705.16 ng/ml



#4 2,4-DCAA
R.T.: 11.488 min
Delta R.T.: 0.041 min
Response: 159156005
Conc: 752.86 ng/ml



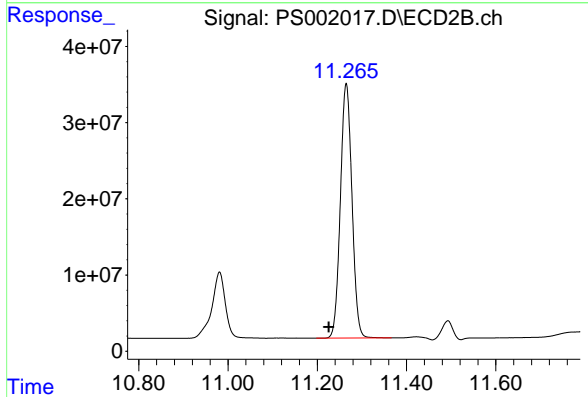
#4 2,4-DCAA
R.T.: 10.981 min
Delta R.T.: 0.041 min
Response: 183512772
Conc: 769.42 ng/ml



#5 DICAMBA

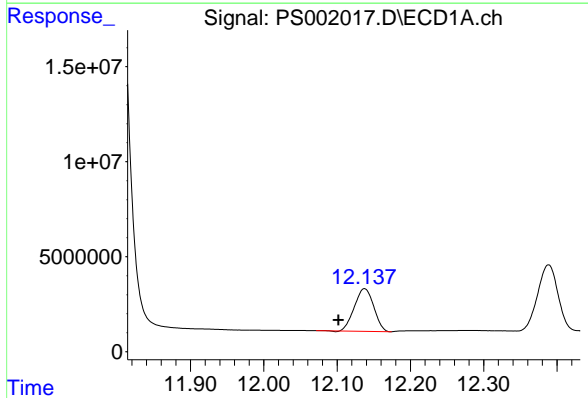
R.T.: 11.798 min
 Delta R.T.: 0.039 min
 Response: 569380072
 Conc: 723.40 ng/ml

Instrument :
 ECD_S
 ClientSampleId :



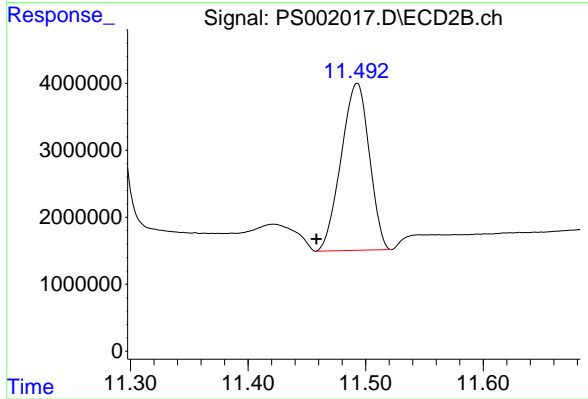
#5 DICAMBA

R.T.: 11.265 min
 Delta R.T.: 0.040 min
 Response: 599777863
 Conc: 729.92 ng/ml



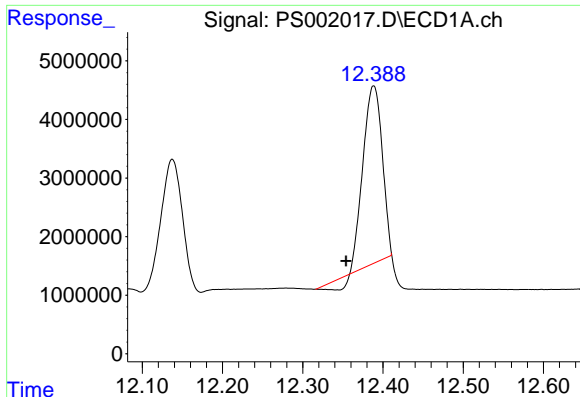
#6 MCPP

R.T.: 12.137 min
 Delta R.T.: 0.036 min
 Response: 41140647
 Conc: 73.47 ug/ml



#6 MCPP

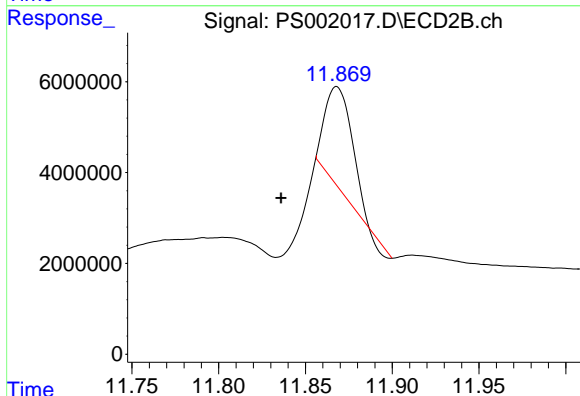
R.T.: 11.493 min
 Delta R.T.: 0.035 min
 Response: 41442946
 Conc: 75.93 ug/ml



#7 MCPA

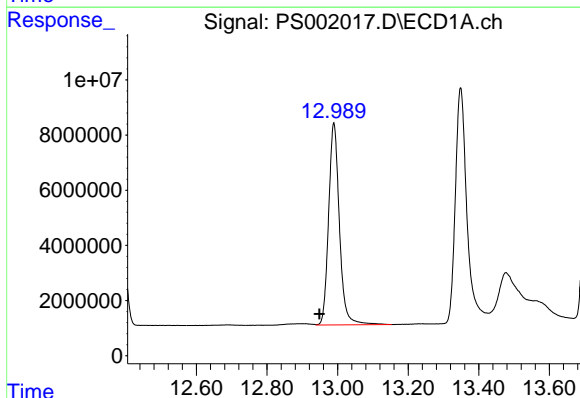
R.T.: 12.388 min
 Delta R.T.: 0.034 min
 Response: 48535185
 Conc: 52.51 ug/ml

Instrument :
 ECD_S
 ClientSampled :



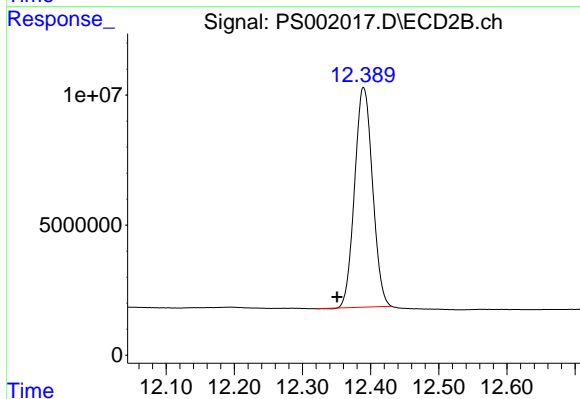
#7 MCPA

R.T.: 11.868 min
 Delta R.T.: 0.032 min
 Response: 23085036
 Conc: 28.04 ug/ml



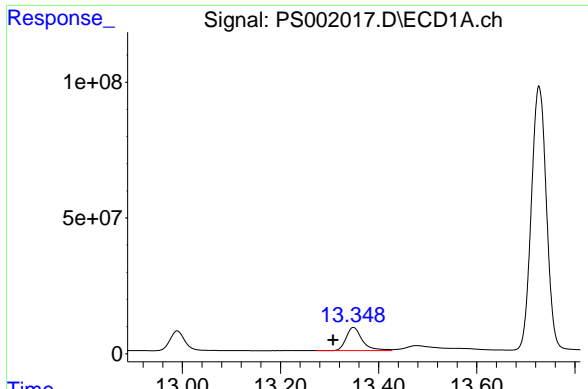
#8 DICHLORPROP

R.T.: 12.989 min
 Delta R.T.: 0.041 min
 Response: 155258893
 Conc: 716.46 ng/ml



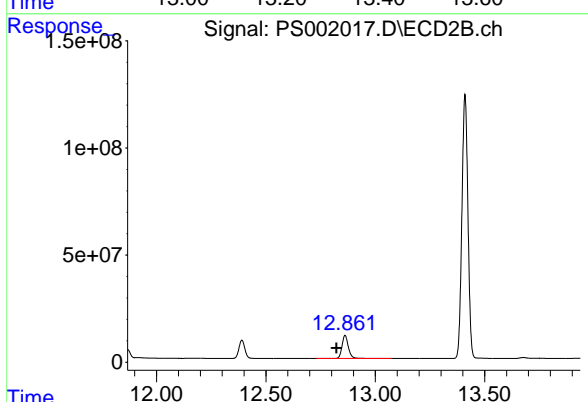
#8 DICHLORPROP

R.T.: 12.390 min
 Delta R.T.: 0.039 min
 Response: 154353533
 Conc: 704.63 ng/ml

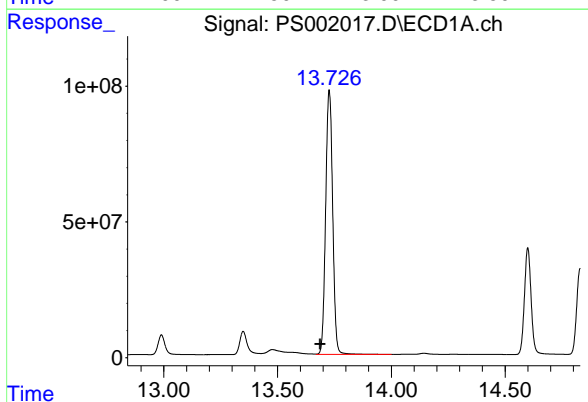


#9 2,4-D
 R.T.: 13.349 min
 Delta R.T.: 0.041 min
 Response: 195758253
 Conc: 732.99 ng/ml

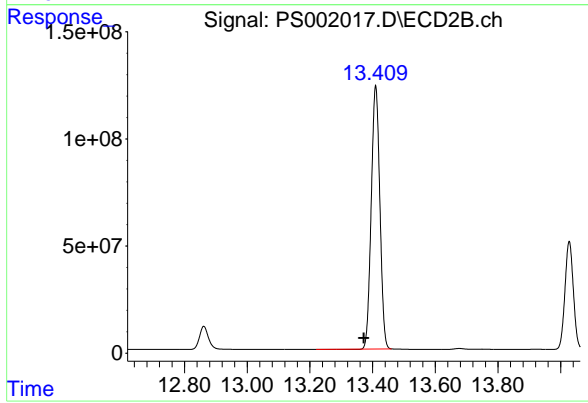
Instrument :
 ECD_S
 ClientSampleId :



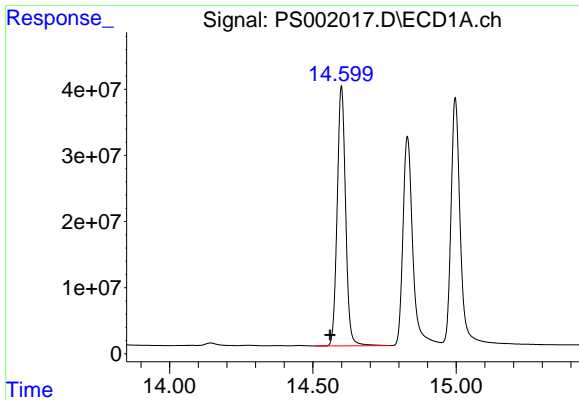
#9 2,4-D
 R.T.: 12.861 min
 Delta R.T.: 0.040 min
 Response: 216929872
 Conc: 725.97 ng/ml



#10 Pentachlorophenol
 R.T.: 13.727 min
 Delta R.T.: 0.040 min
 Response: 2089089980
 Conc: 738.20 ng/ml

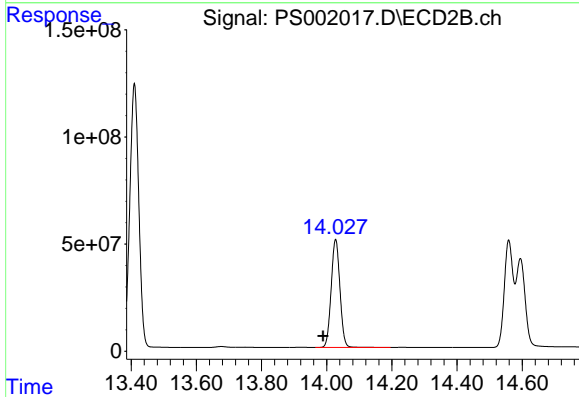


#10 Pentachlorophenol
 R.T.: 13.410 min
 Delta R.T.: 0.038 min
 Response: 2334960016
 Conc: 737.44 ng/ml

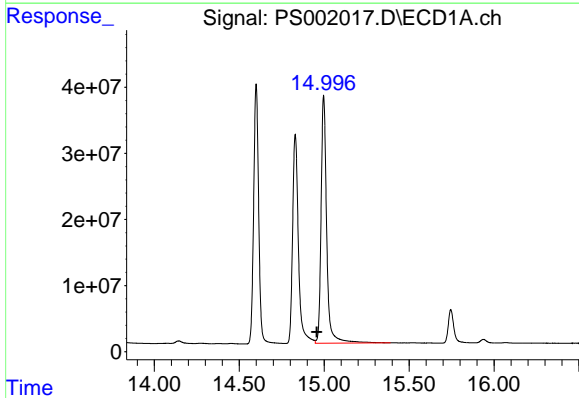


#11 2,4,5-TP (SILVEX)
 R.T.: 14.599 min
 Delta R.T.: 0.040 min
 Response: 801821993
 Conc: 733.04 ng/ml

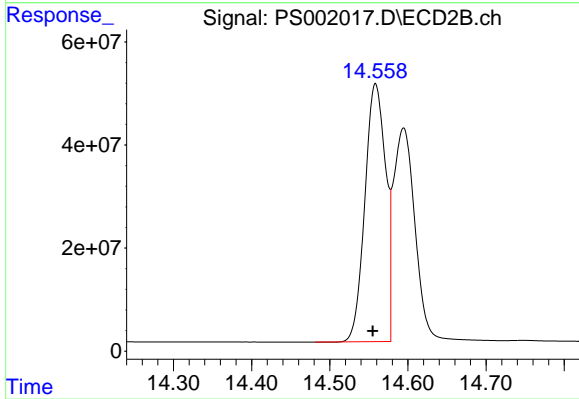
Instrument :
 ECD_S
 ClientSampleId :



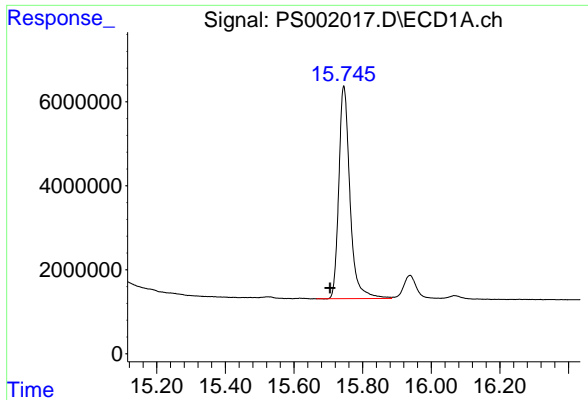
#11 2,4,5-TP (SILVEX)
 R.T.: 14.027 min
 Delta R.T.: 0.039 min
 Response: 937623146
 Conc: 738.10 ng/ml



#12 2,4,5-T
 R.T.: 14.997 min
 Delta R.T.: 0.040 min
 Response: 860502175
 Conc: 733.75 ng/ml

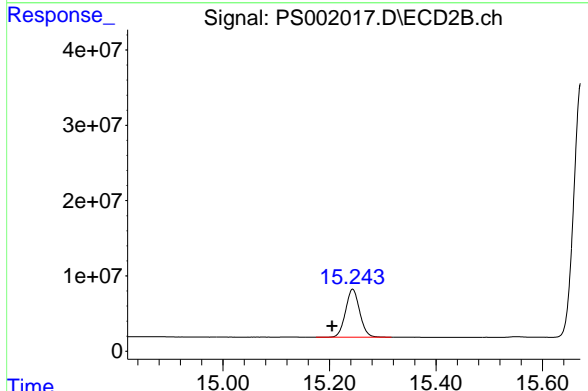


#12 2,4,5-T
 R.T.: 14.558 min
 Delta R.T.: 0.003 min
 Response: 919226645
 Conc: 839.23 ng/ml

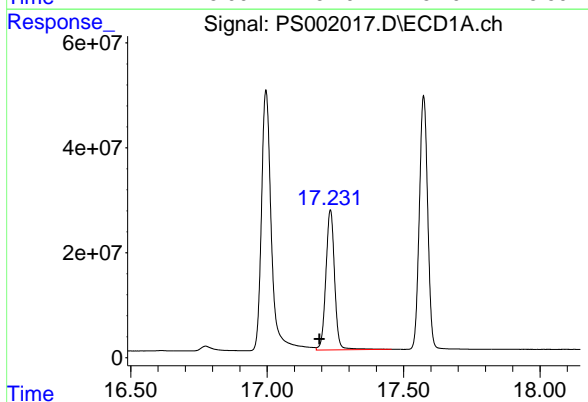


#13 2,4-DB
 R.T.: 15.745 min
 Delta R.T.: 0.040 min
 Response: 114627671
 Conc: 729.79 ng/ml

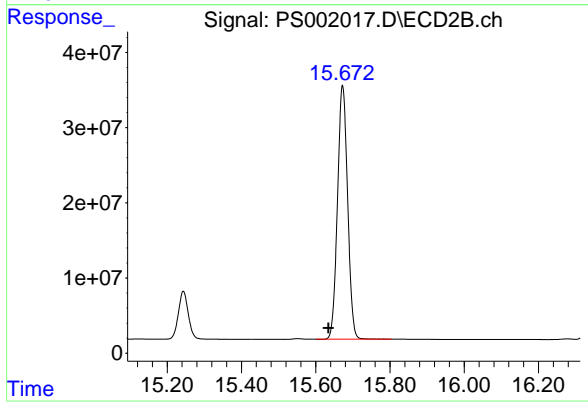
Instrument :
 ECD_S
 ClientSampled :



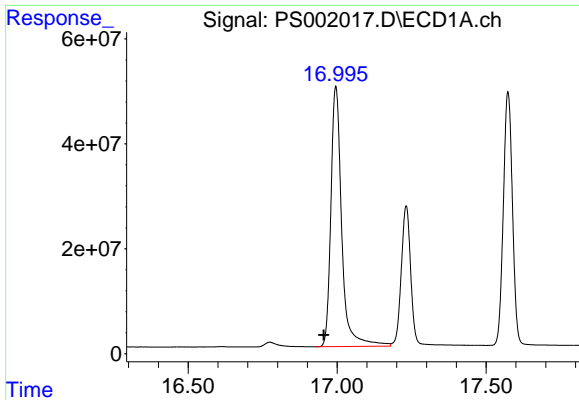
#13 2,4-DB
 R.T.: 15.243 min
 Delta R.T.: 0.038 min
 Response: 117200627
 Conc: 744.49 ng/ml



#14 DINOSEB
 R.T.: 17.232 min
 Delta R.T.: 0.040 min
 Response: 592839041
 Conc: 708.09 ng/ml

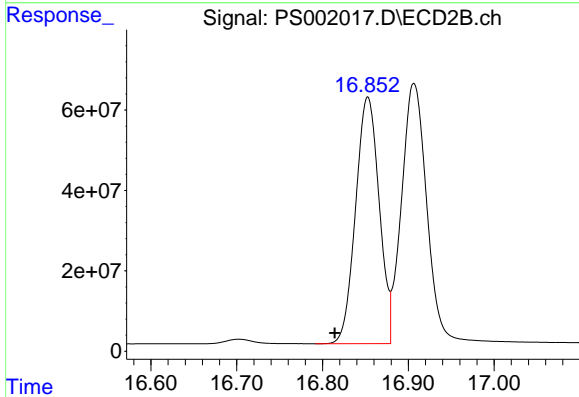


#14 DINOSEB
 R.T.: 15.672 min
 Delta R.T.: 0.038 min
 Response: 638537975
 Conc: 721.98 ng/ml

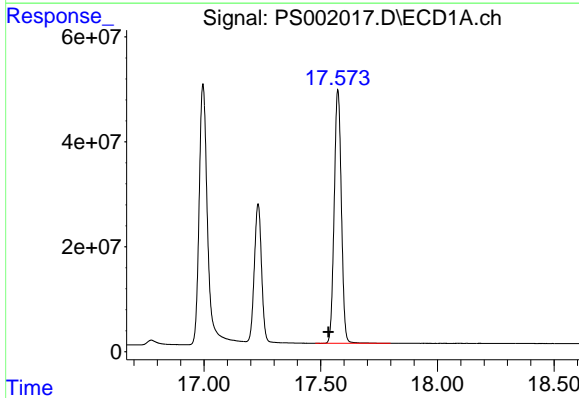


#15 Picloram
 R.T.: 16.995 min
 Delta R.T.: 0.040 min
 Response: 1255278255
 Conc: 734.21 ng/ml

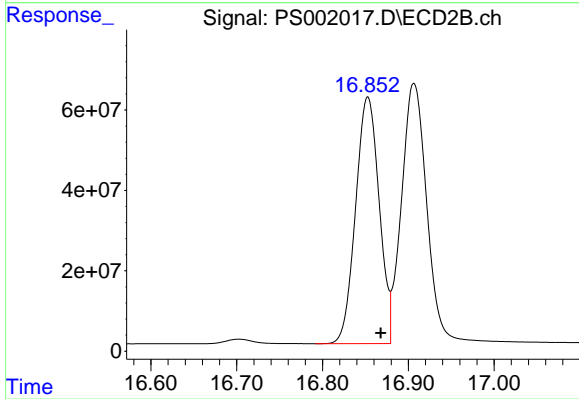
Instrument :
 ECD_S
 ClientSampled :



#15 Picloram
 R.T.: 16.853 min
 Delta R.T.: 0.039 min
 Response: 1170292813
 Conc: 737.78 ng/ml



#16 DCPA
 R.T.: 17.573 min
 Delta R.T.: 0.040 min
 Response: 1027903175
 Conc: 741.57 ng/ml



#16 DCPA
 R.T.: 16.853 min
 Delta R.T.: -0.015 min
 Response: 1170292813
 Conc: 646.85 ng/ml