

Data Path : Z:\pestpcbsrv\HPCHEM1\ECD_S\Data\PS101520\
 Data File : PS012851.D
 Signal(s) : Signal #1: ECD1A.ch Signal #2: ECD2B.ch
 Acq On : 15 Oct 2020 15:16
 Operator : DD\AJ
 Sample : HSTDCCC750
 Misc :
 ALS Vial : 3 Sample Multiplier: 1

Instrument :
 ECD_S
 ClientSampleId :

Integration File signal 1: autoint1.e
 Integration File signal 2: autoint2.e
 Quant Time: Oct 15 16:33:42 2020
 Quant Method : Z:\pestpcbsrv\HPCHEM1\ECD_S\Method\PS092220.M
 Quant Title : 8080.M
 QLast Update : Wed Sep 23 04:57:25 2020
 Response via : Initial Calibration
 Integrator: ChemStation

Volume Inj. : 2 µl
 Signal #1 Phase : Rtx-CLPesticides Signal #2 Phase: Rtx-CLPesticides2
 Signal #1 Info : 30M x 0.32mm x0.5 Signal #2 Info : 30M x 0.32mm x 0.25µm

	Compound	RT#1	RT#2	Resp#1	Resp#2	ng/ml	ng/ml

System Monitoring Compounds							
4) S	2,4-DCAA	7.216	6.912	713.3E6	322.0E6	728.268	700.059
Target Compounds							
1) T	Dalapon	3.035	2.623	705.6E6	362.9E6	620.916	606.672
2) T	3,5-DICHL...	6.431	6.064	911.0E6	468.9E6	675.611	657.678
3) T	4-Nitroph...	7.050	6.523	307.1E6	170.5E6	631.634	610.094
5) T	DICAMBA	7.406	7.078	2680.2E6	1295.0E6	694.763	679.117
6) T	MCP P	7.573	7.173	203.6E6	102.6E6	69.799	67.847
7) T	MCPA	7.723	7.389	283.7E6	156.4E6	68.027	65.220
8) T	DICHLORPROP	8.098	7.703	664.5E6	346.1E6	686.704	670.282
9) T	2,4-D	8.330	8.001	803.1E6	414.7E6	707.354	662.272
10) T	Pentachlo...	8.637	8.426	9768.1E6	4274.0E6	706.821	700.723
11) T	2,4,5-TP ...	9.186	8.788	3870.5E6	1827.8E6	698.037	692.760
12) T	2,4,5-T	9.474	9.168	3881.7E6	1744.6E6	690.548	678.490
13) T	2,4-DB	10.028	9.676	601.3E6	234.5E6	635.390	626.430
14) T	DINOSEB	11.182	10.004	3219.6E6	1332.6E6	709.130	695.702
15) T	Picloram	11.017	11.000	4392.9E6	2569.3E6	610.106	651.881
16) T	DCPA	11.447	10.931	4974.1E6	2364.2E6	704.225	710.947

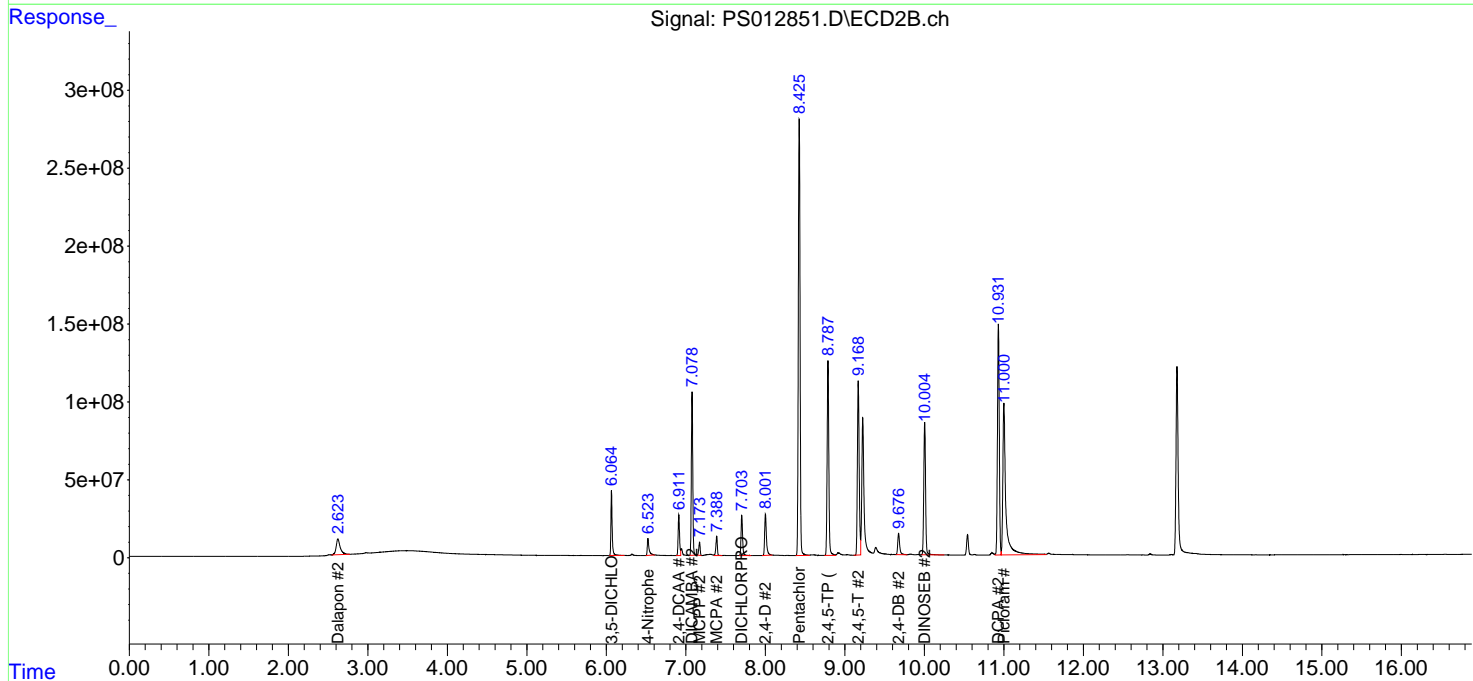
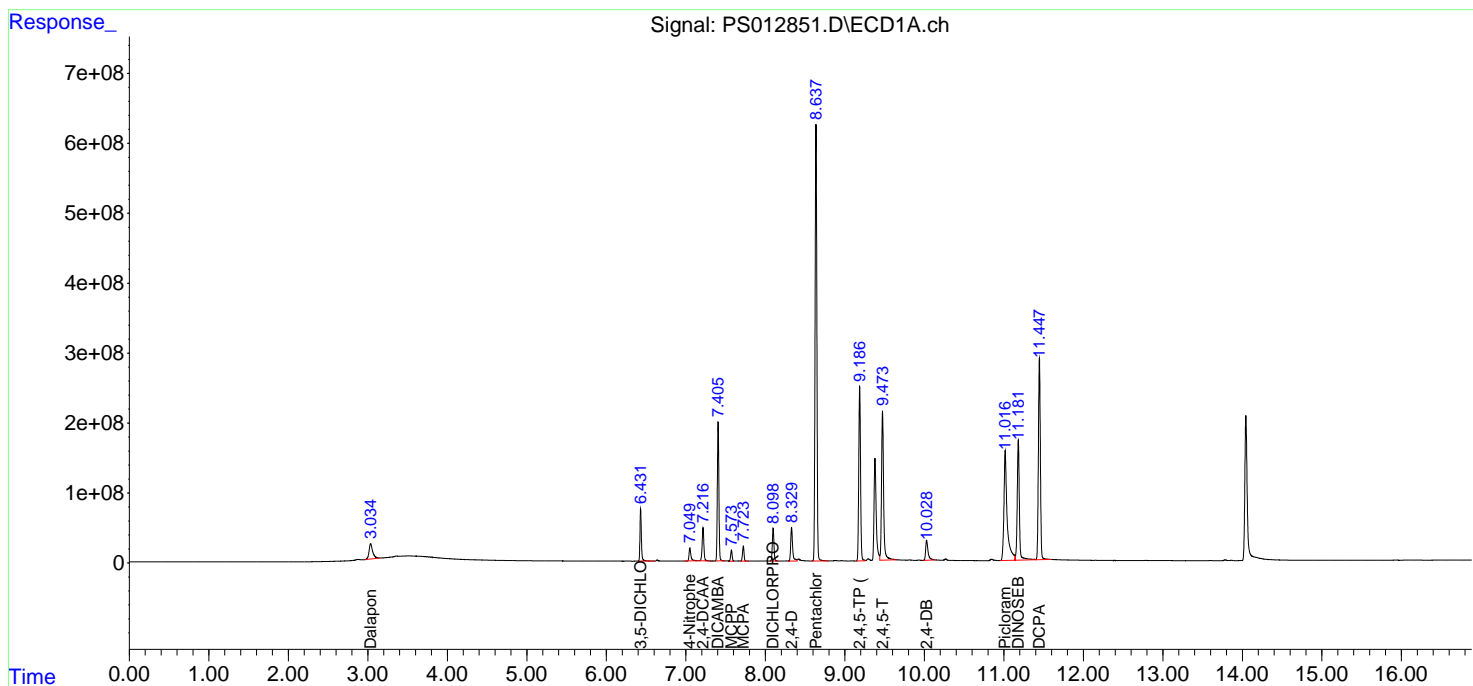
(f)=RT Delta > 1/2 Window (#)=Amounts differ by > 25% (m)=manual int.

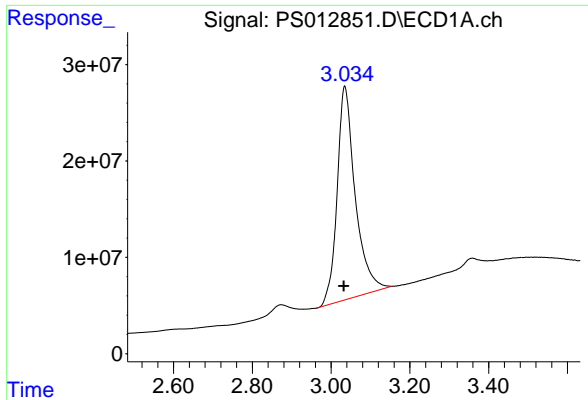
Data Path : Z:\pestpcbsrv\HPCHEM1\ECD_S\Data\PS101520\
 Data File : PS012851.D
 Signal(s) : Signal #1: ECD1A.ch Signal #2: ECD2B.ch
 Acq On : 15 Oct 2020 15:16
 Operator : DD\AJ
 Sample : HSTDCCC750
 Misc :
 ALS Vial : 3 Sample Multiplier: 1

Instrument :
 ECD_S
 ClientSampled :

Integration File signal 1: autoint1.e
 Integration File signal 2: autoint2.e
 Quant Time: Oct 15 16:33:42 2020
 Quant Method : Z:\pestpcbsrv\HPCHEM1\ECD_S\Method\PS092220.M
 Quant Title : 8080.M
 QLast Update : Wed Sep 23 04:57:25 2020
 Response via : Initial Calibration
 Integrator: ChemStation

Volume Inj. : 2 µl
 Signal #1 Phase : Rtx-CLPesticides Signal #2 Phase: Rtx-CLPesticides2
 Signal #1 Info : 30M x 0.32mm x0.5 Signal #2 Info : 30M x 0.32mm x 0.25µm

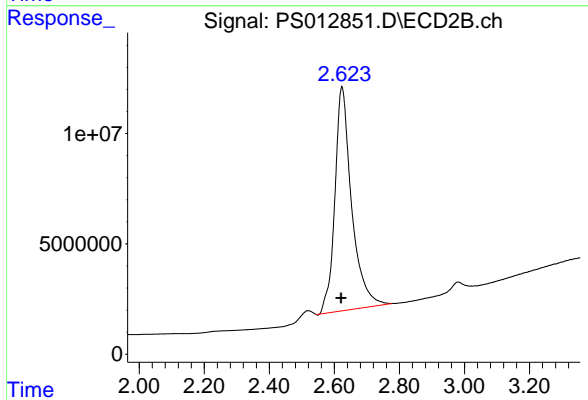




#1 Dalapon

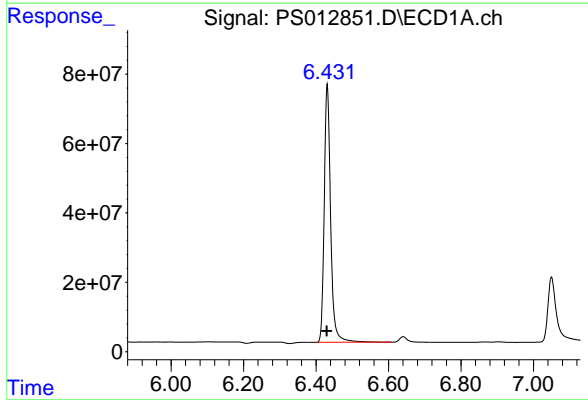
R.T.: 3.035 min
 Delta R.T.: 0.003 min
 Response: 705588310
 Conc: 620.92 ng/ml

Instrument :
 ECD_S
 ClientSampled :



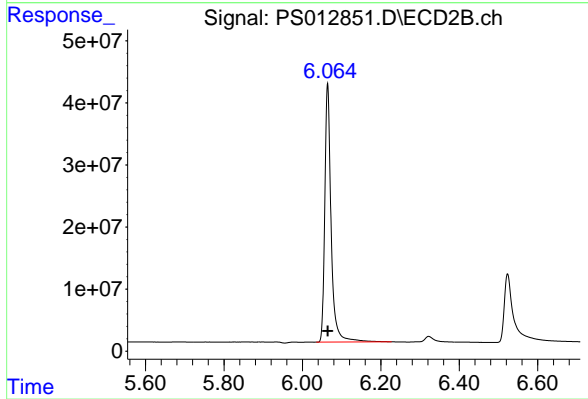
#1 Dalapon

R.T.: 2.623 min
 Delta R.T.: 0.003 min
 Response: 362905097
 Conc: 606.67 ng/ml



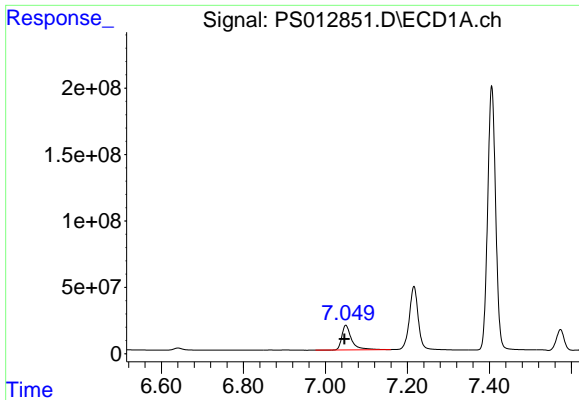
#2 3,5-DICHLOROBENZOIC ACID

R.T.: 6.431 min
 Delta R.T.: 0.001 min
 Response: 911023860
 Conc: 675.61 ng/ml



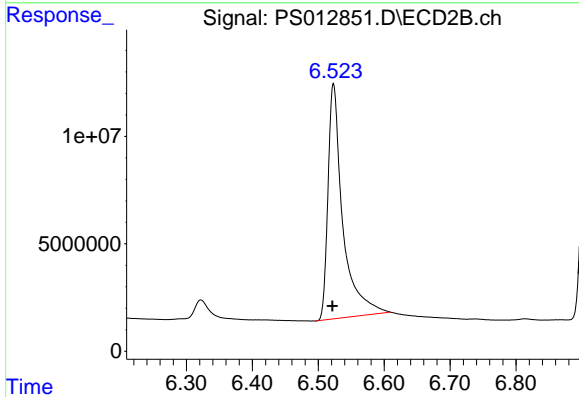
#2 3,5-DICHLOROBENZOIC ACID

R.T.: 6.064 min
 Delta R.T.: 0.000 min
 Response: 468898029
 Conc: 657.68 ng/ml

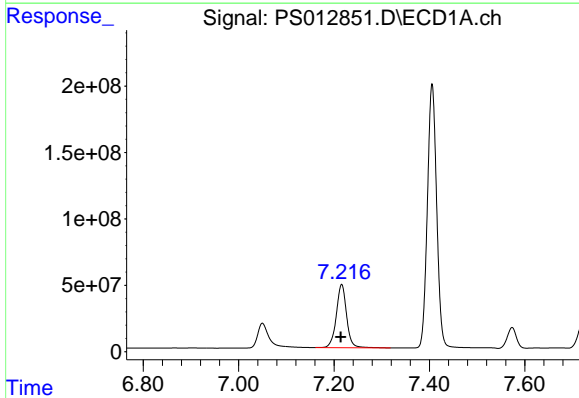


#3 4-Nitrophenol
 R.T.: 7.050 min
 Delta R.T.: 0.003 min
 Response: 307140659
 Conc: 631.63 ng/ml

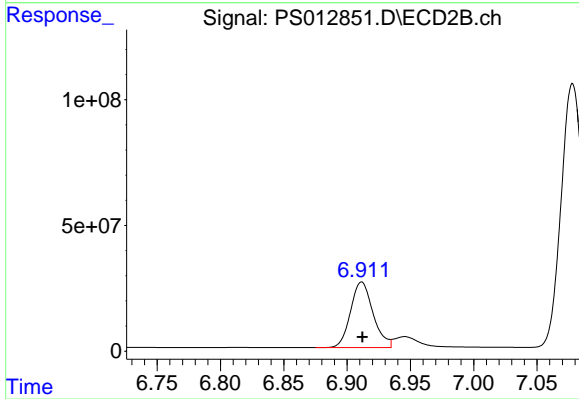
Instrument :
 ECD_S
 ClientSampleId :



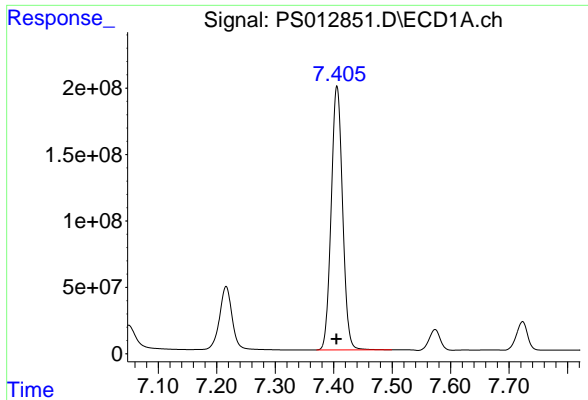
#3 4-Nitrophenol
 R.T.: 6.523 min
 Delta R.T.: 0.001 min
 Response: 170465692
 Conc: 610.09 ng/ml



#4 2,4-DCAA
 R.T.: 7.216 min
 Delta R.T.: 0.001 min
 Response: 713301676
 Conc: 728.27 ng/ml

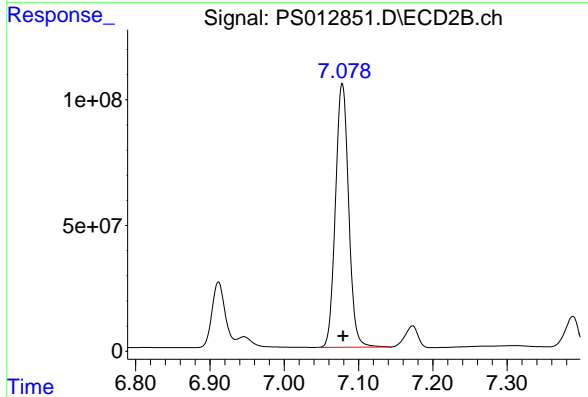


#4 2,4-DCAA
 R.T.: 6.912 min
 Delta R.T.: 0.000 min
 Response: 322038765
 Conc: 700.06 ng/ml

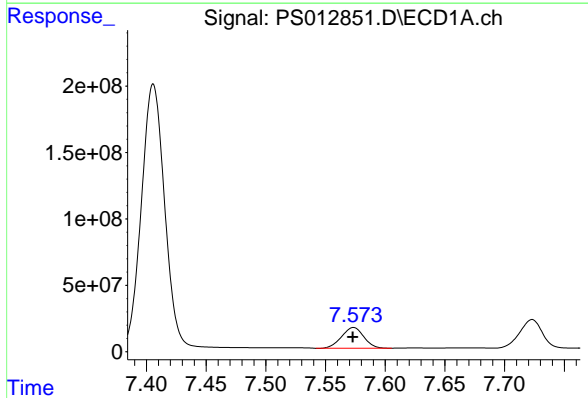


#5 DICAMBA
 R.T.: 7.406 min
 Delta R.T.: 0.000 min
 Response: 2680172209
 Conc: 694.76 ng/ml

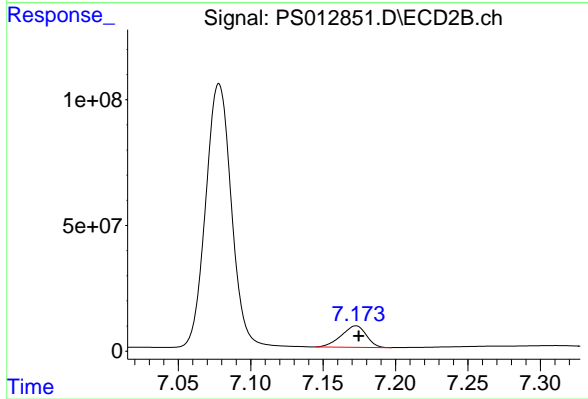
Instrument :
 ECD_S
 ClientSampleId :



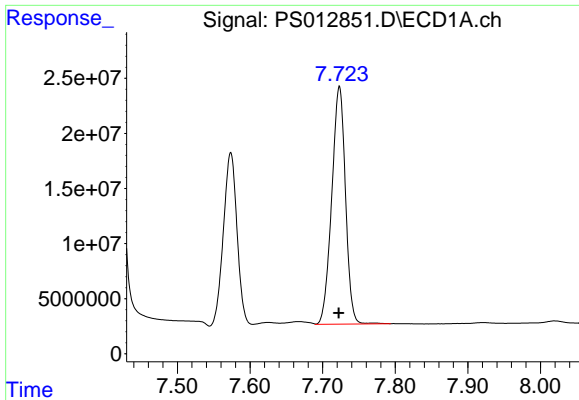
#5 DICAMBA
 R.T.: 7.078 min
 Delta R.T.: 0.000 min
 Response: 1295019417
 Conc: 679.12 ng/ml



#6 MCP
 R.T.: 7.573 min
 Delta R.T.: 0.000 min
 Response: 203645048
 Conc: 69.80 ug/ml

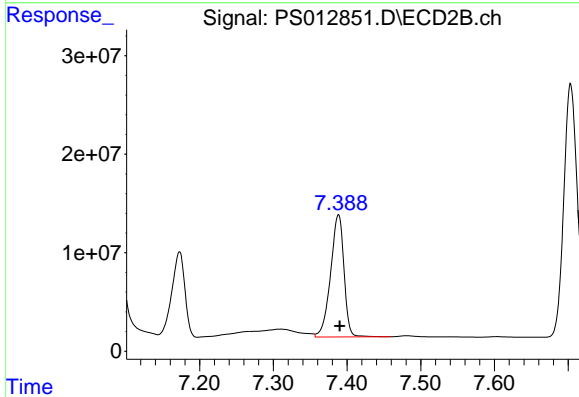


#6 MCP
 R.T.: 7.173 min
 Delta R.T.: -0.002 min
 Response: 102629549
 Conc: 67.85 ug/ml

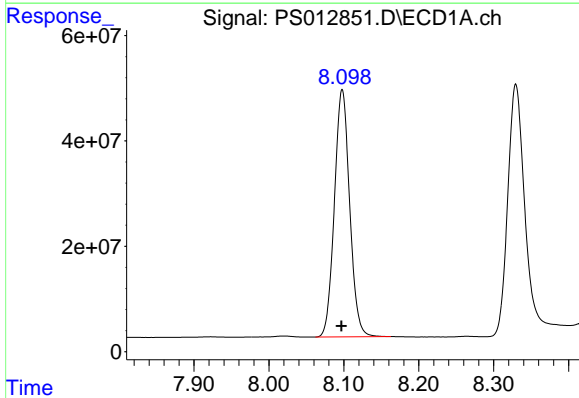


#7 MCPA
 R.T.: 7.723 min
 Delta R.T.: 0.000 min
 Response: 283716420
 Conc: 68.03 ug/ml

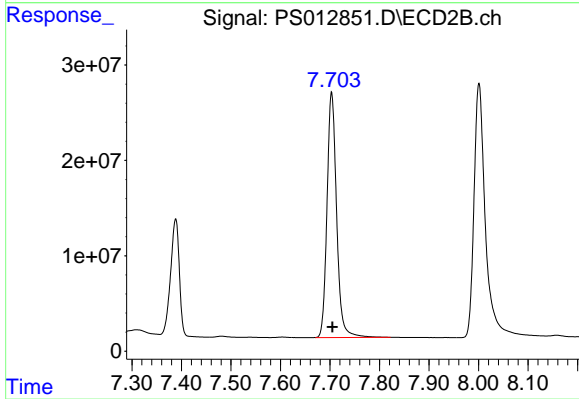
Instrument :
 ECD_S
 ClientSampled :



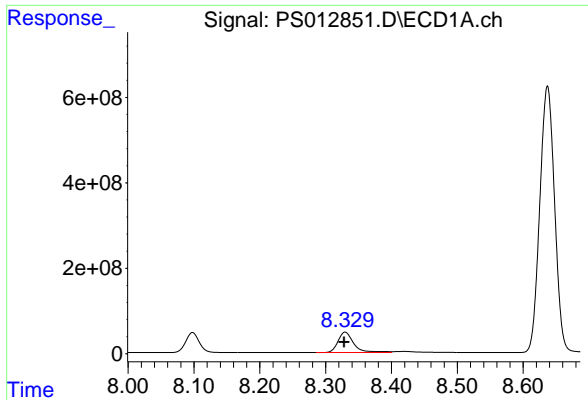
#7 MCPA
 R.T.: 7.389 min
 Delta R.T.: -0.001 min
 Response: 156350218
 Conc: 65.22 ug/ml



#8 DICHLORPROP
 R.T.: 8.098 min
 Delta R.T.: 0.000 min
 Response: 664518010
 Conc: 686.70 ng/ml

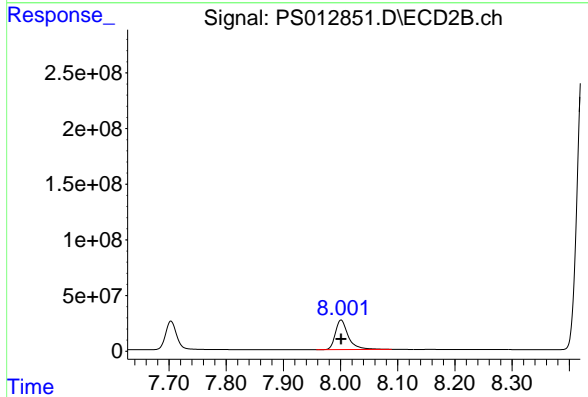


#8 DICHLORPROP
 R.T.: 7.703 min
 Delta R.T.: -0.002 min
 Response: 346084943
 Conc: 670.28 ng/ml

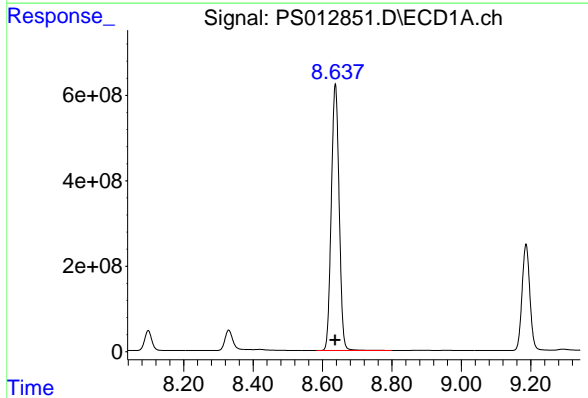


#9 2,4-D
 R.T.: 8.330 min
 Delta R.T.: 0.002 min
 Response: 803144825
 Conc: 707.35 ng/ml

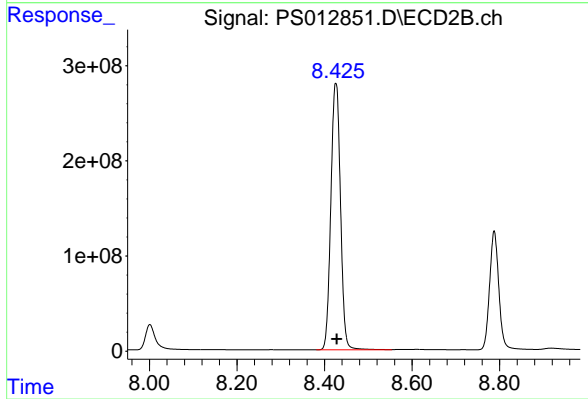
Instrument :
 ECD_S
 ClientSampled :



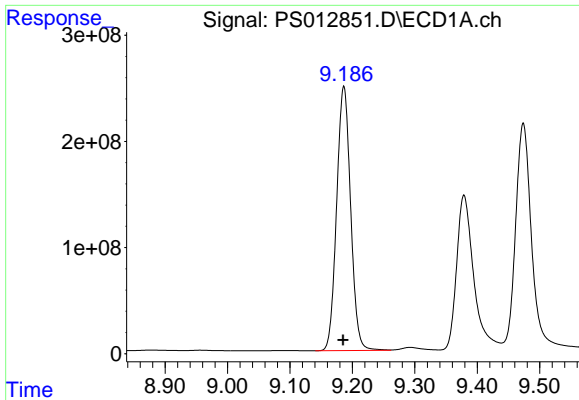
#9 2,4-D
 R.T.: 8.001 min
 Delta R.T.: 0.000 min
 Response: 414741840
 Conc: 662.27 ng/ml



#10 Pentachlorophenol
 R.T.: 8.637 min
 Delta R.T.: 0.001 min
 Response: 9768121712
 Conc: 706.82 ng/ml

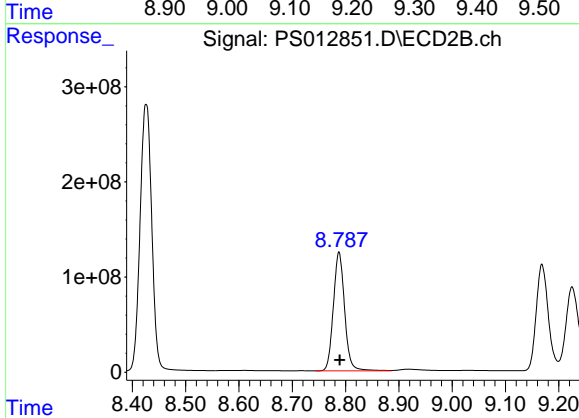


#10 Pentachlorophenol
 R.T.: 8.426 min
 Delta R.T.: -0.002 min
 Response: 4273988976
 Conc: 700.72 ng/ml

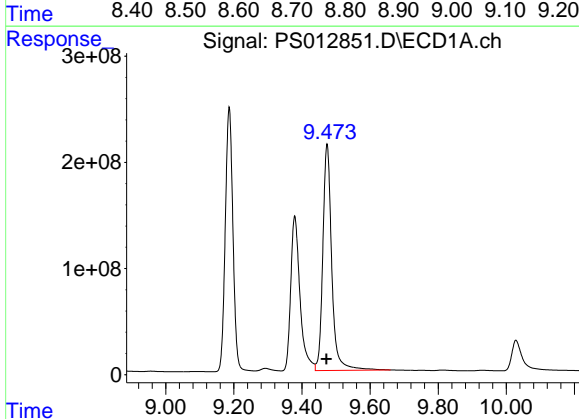


#11 2,4,5-TP (SILVEX)
 R.T.: 9.186 min
 Delta R.T.: 0.001 min
 Response: 3870503880
 Conc: 698.04 ng/ml

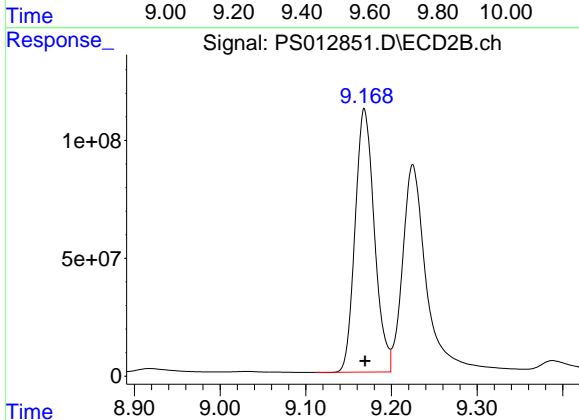
Instrument :
 ECD_S
 ClientSampleId :



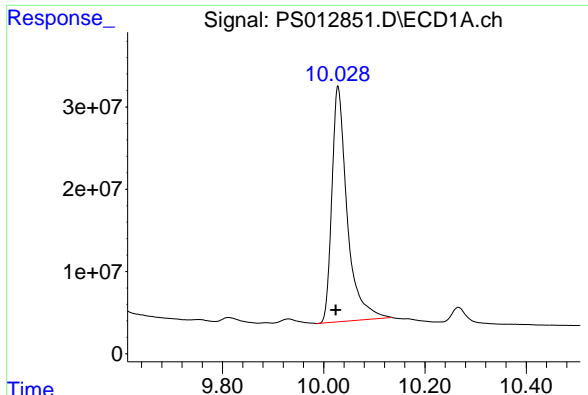
#11 2,4,5-TP (SILVEX)
 R.T.: 8.788 min
 Delta R.T.: -0.001 min
 Response: 1827773107
 Conc: 692.76 ng/ml



#12 2,4,5-T
 R.T.: 9.474 min
 Delta R.T.: 0.002 min
 Response: 3881716875
 Conc: 690.55 ng/ml



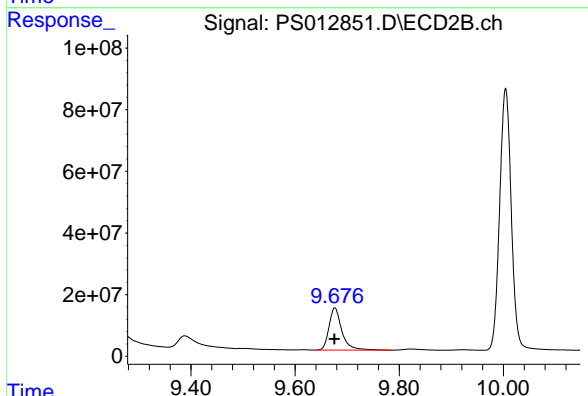
#12 2,4,5-T
 R.T.: 9.168 min
 Delta R.T.: 0.000 min
 Response: 1744594072
 Conc: 678.49 ng/ml



#13 2,4-DB

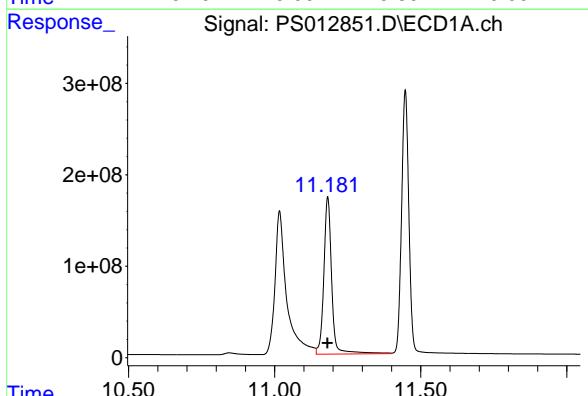
R.T.: 10.028 min
 Delta R.T.: 0.005 min
 Response: 601270180
 Conc: 635.39 ng/ml

Instrument :
 ECD_S
 ClientSampleId :



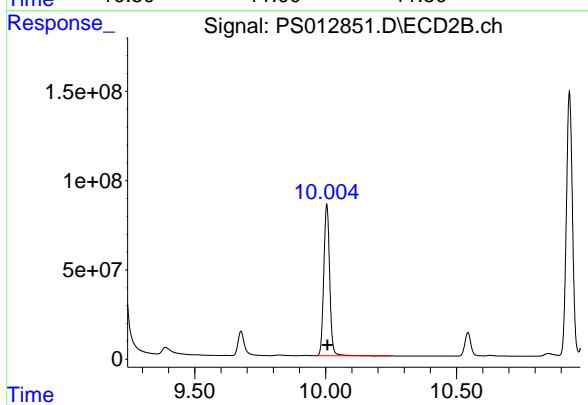
#13 2,4-DB

R.T.: 9.676 min
 Delta R.T.: 0.000 min
 Response: 234515802
 Conc: 626.43 ng/ml



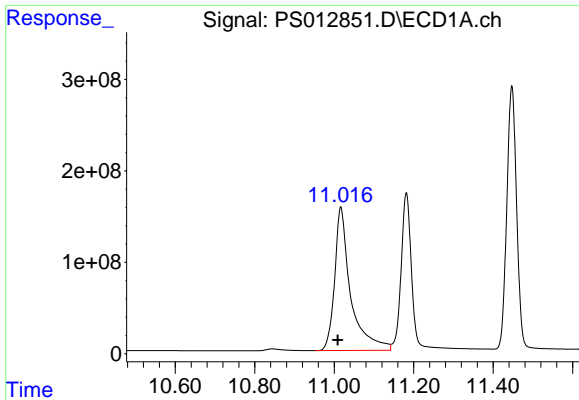
#14 DINOSEB

R.T.: 11.182 min
 Delta R.T.: 0.000 min
 Response: 3219612813
 Conc: 709.13 ng/ml



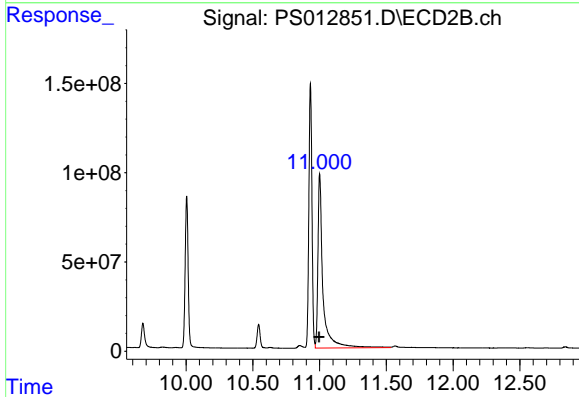
#14 DINOSEB

R.T.: 10.004 min
 Delta R.T.: -0.002 min
 Response: 1332568777
 Conc: 695.70 ng/ml

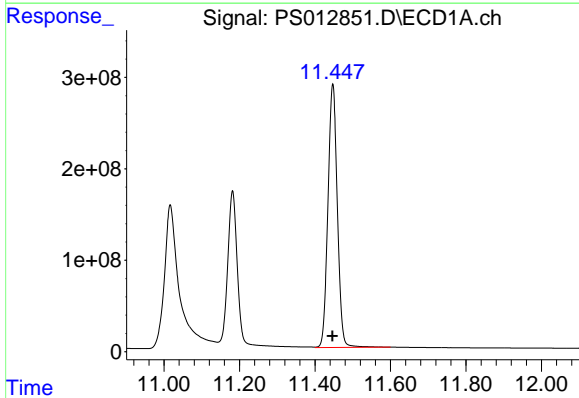


#15 Picloram
 R.T.: 11.017 min
 Delta R.T.: 0.008 min
 Response: 4392850029
 Conc: 610.11 ng/ml

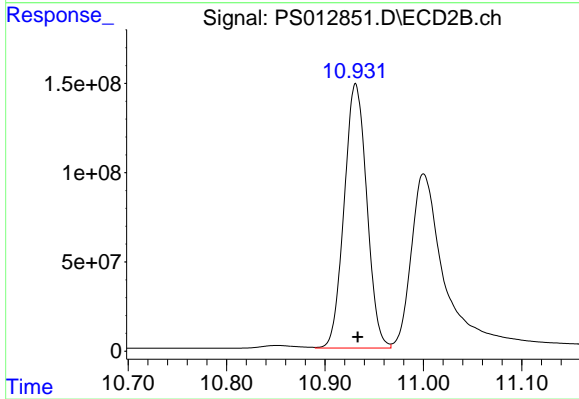
Instrument :
 ECD_S
 ClientSampleId :



#15 Picloram
 R.T.: 11.000 min
 Delta R.T.: 0.005 min
 Response: 2569341684
 Conc: 651.88 ng/ml



#16 DCPA
 R.T.: 11.447 min
 Delta R.T.: 0.000 min
 Response: 4974107067
 Conc: 704.22 ng/ml



#16 DCPA
 R.T.: 10.931 min
 Delta R.T.: -0.002 min
 Response: 2364200812
 Conc: 710.95 ng/ml