

Data Path : Z:\pestpcbsrv\HPCHEM1\ECD\_S\Data\PS101619\  
 Data File : PS007189.D  
 Signal(s) : Signal #1: ECD1A.ch Signal #2: ECD2B.ch  
 Acq On : 16 Oct 2019 12:19  
 Operator : SM\AJ  
 Sample : K5355-08  
 Misc :  
 ALS Vial : 11 Sample Multiplier: 1

Instrument :  
 ECD\_S  
 ClientSampleId :

Integration File signal 1: autoint1.e  
 Integration File signal 2: autoint2.e  
 Quant Time: Oct 16 12:53:06 2019  
 Quant Method : Z:\pestpcbsrv\HPCHEM1\ECD\_S\Method\PS101419.M  
 Quant Title : 8080.M  
 QLast Update : Mon Oct 14 13:54:23 2019  
 Response via : Initial Calibration  
 Integrator: ChemStation

Volume Inj. : 2 µl  
 Signal #1 Phase : Rtx-CLPesticides Signal #2 Phase: Rtx-CLPesticides2  
 Signal #1 Info : 30M x 0.32mm x0.5 Signal #2 Info : 30M x 0.32mm x 0.25µm

Compound	RT#1	RT#2	Resp#1	Resp#2	ng/ml	ng/ml
-----						
System Monitoring Compounds						
4) S 2,4-DCAA	5.441	5.171	291.3E6	169.9E6	212.807	241.505
Target Compounds						
1) T Dalapon	1.992	1.705	71913448	55112729	42.978	60.563 #
2) T 3,5-DICHL...	0.000	4.461	0	5363204	N.D.	6.233
5) T DICAMBA	5.531	5.300	41744198	10466033	8.496	4.022 #
7) T MCPA	0.000	5.588	0	6320044	N.D.	2.174
8) T DICHLORPROP	6.152	5.831	9551431	88928703	8.148	136.558 #
10) T Pentachlo...	0.000	6.462	0	10224972	N.D.	1.063
11) T 2,4,5-TP ...	0.000	6.799	0	113.5E6	N.D.	29.851
15) T Picloram	0.000	8.926	0	8998240	N.D.	1.465
16) T DCPA	0.000	8.926	0	8998240	N.D.	1.794
-----						

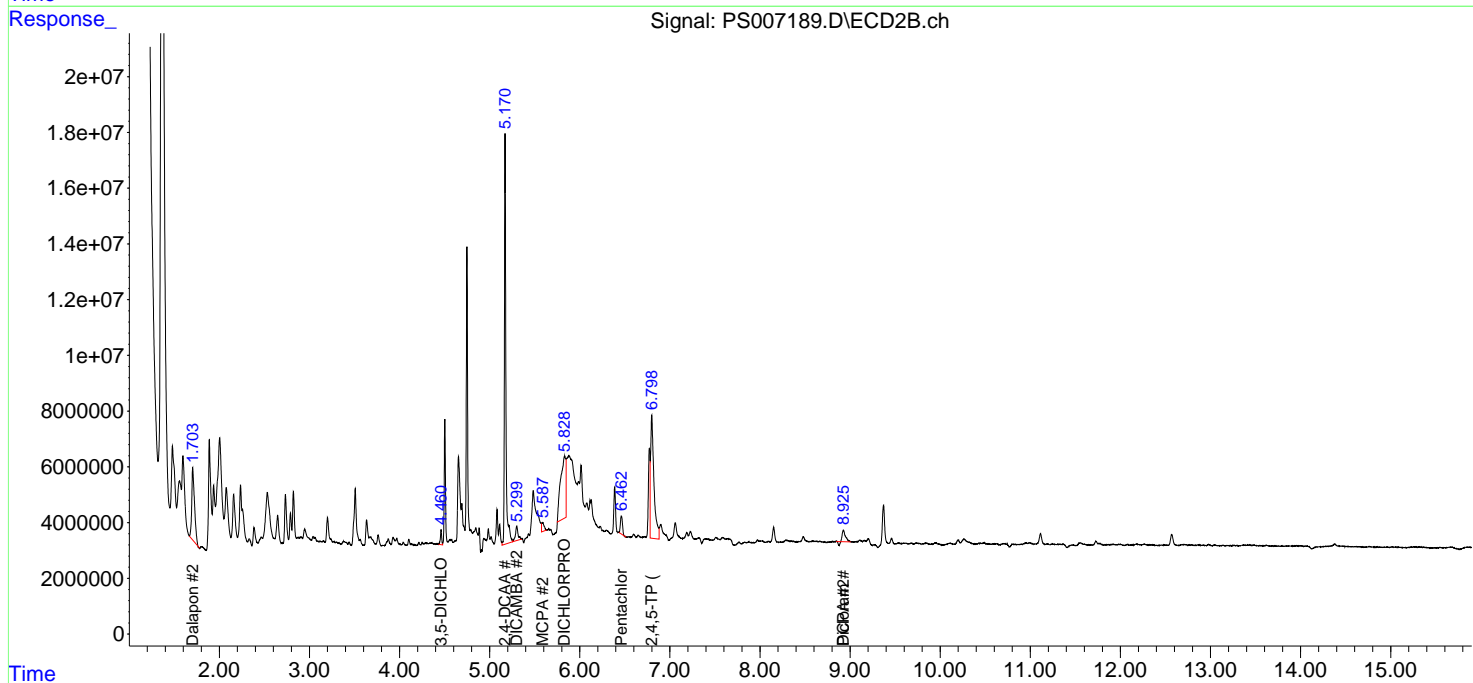
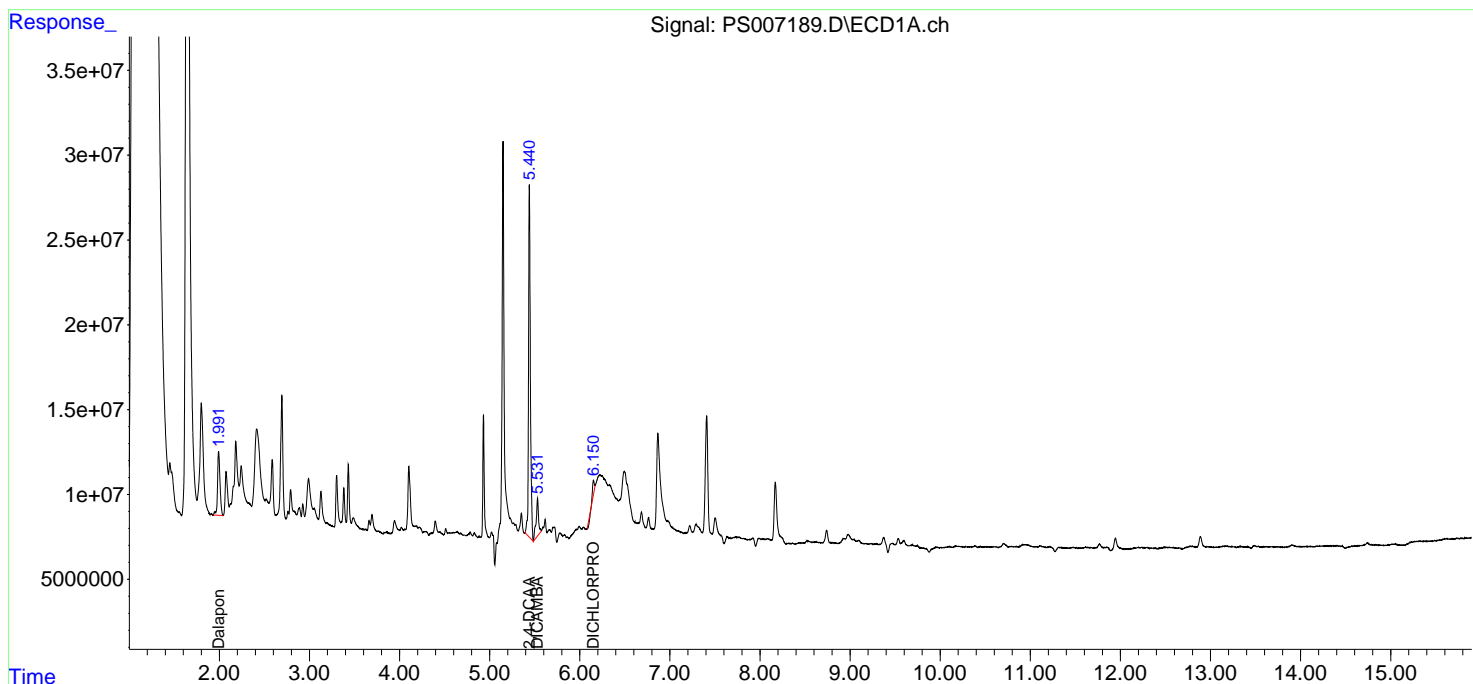
(f)=RT Delta > 1/2 Window (#)=Amounts differ by > 25% (m)=manual int.

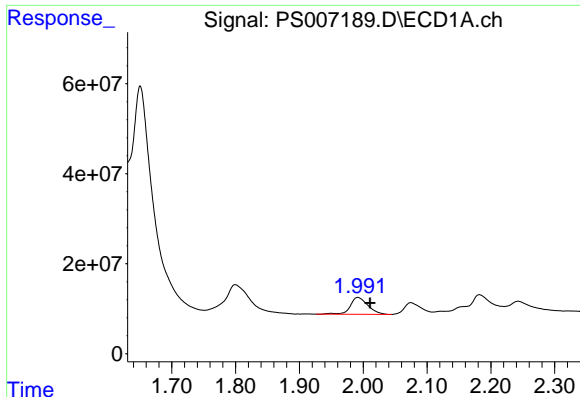
Data Path : Z:\pestpcbsrv\HPCHEM1\ECD\_S\Data\PS101619\  
 Data File : PS007189.D  
 Signal(s) : Signal #1: ECD1A.ch Signal #2: ECD2B.ch  
 Acq On : 16 Oct 2019 12:19  
 Operator : SM\AJ  
 Sample : K5355-08  
 Misc :  
 ALS Vial : 11 Sample Multiplier: 1

Instrument :  
 ECD\_S  
 ClientSampled :

Integration File signal 1: autoint1.e  
 Integration File signal 2: autoint2.e  
 Quant Time: Oct 16 12:53:06 2019  
 Quant Method : Z:\pestpcbsrv\HPCHEM1\ECD\_S\Method\PS101419.M  
 Quant Title : 8080.M  
 QLast Update : Mon Oct 14 13:54:23 2019  
 Response via : Initial Calibration  
 Integrator: ChemStation

Volume Inj. : 2 µl  
 Signal #1 Phase : Rtx-CLPesticides Signal #2 Phase: Rtx-CLPesticides2  
 Signal #1 Info : 30M x 0.32mm x0.5 Signal #2 Info : 30M x 0.32mm x 0.25µm

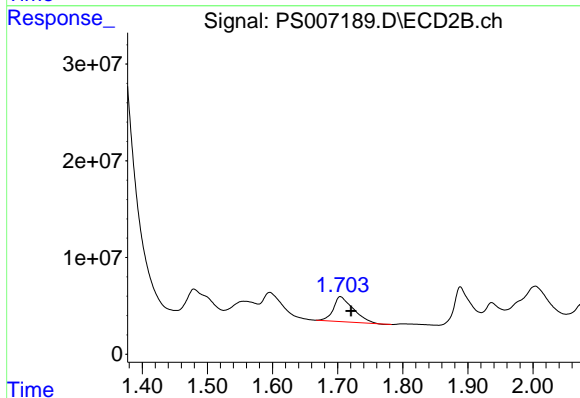




#1 Dalapon

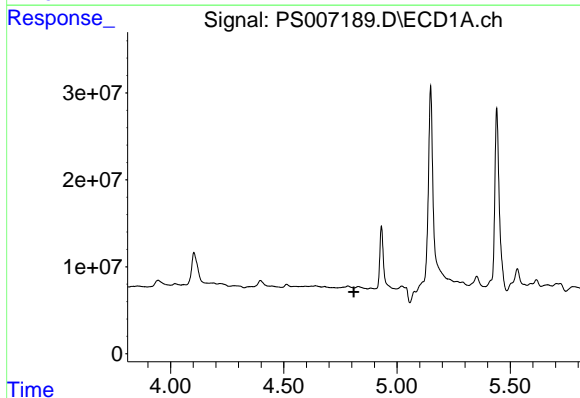
R.T.: 1.992 min  
 Delta R.T.: -0.019 min  
 Response: 71913448  
 Conc: 42.98 ng/ml

Instrument :  
 ECD\_S  
 ClientSampled :



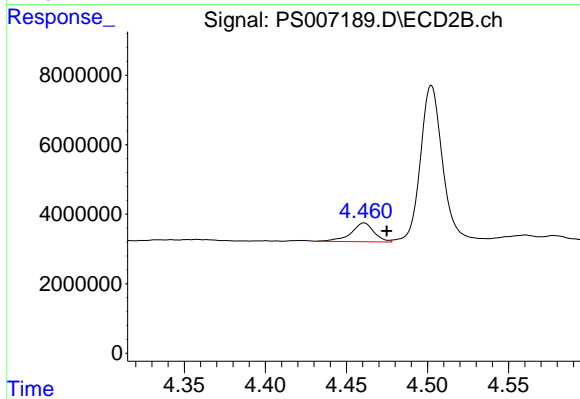
#1 Dalapon

R.T.: 1.705 min  
 Delta R.T.: -0.016 min  
 Response: 55112729  
 Conc: 60.56 ng/ml



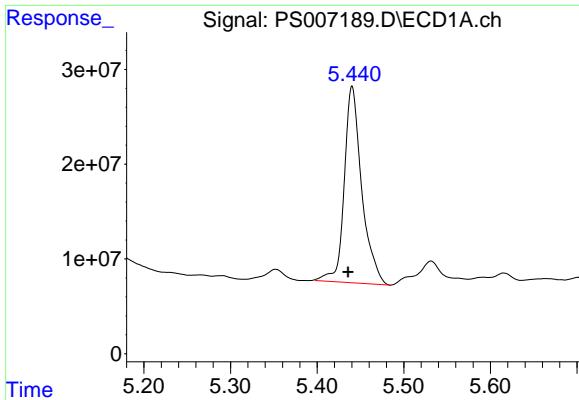
#2 3,5-DICHLOROBENZOIC ACID

R.T.: 0.000 min  
 Exp R.T. : 4.810 min  
 Response: 0  
 Conc: N.D.



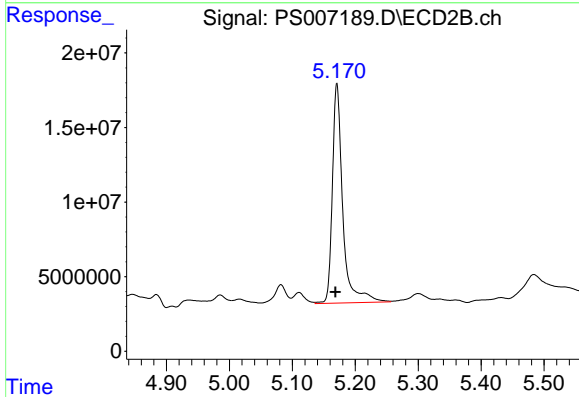
#2 3,5-DICHLOROBENZOIC ACID

R.T.: 4.461 min  
 Delta R.T.: -0.014 min  
 Response: 5363204  
 Conc: 6.23 ng/ml

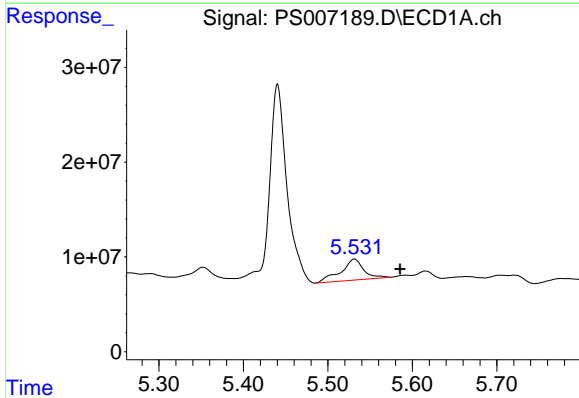


#4 2,4-DCAA  
 R.T.: 5.441 min  
 Delta R.T.: 0.005 min  
 Response: 291262241  
 Conc: 212.81 ng/ml

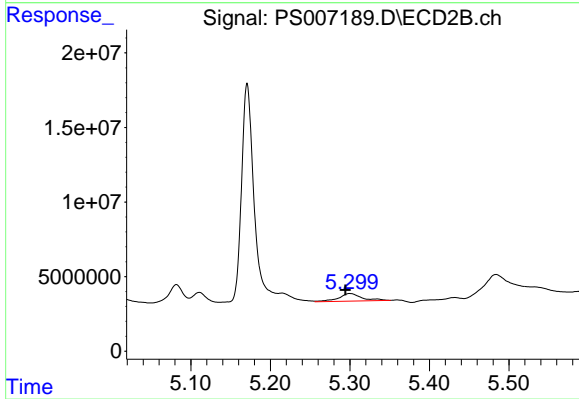
Instrument :  
 ECD\_S  
 ClientSampleId :



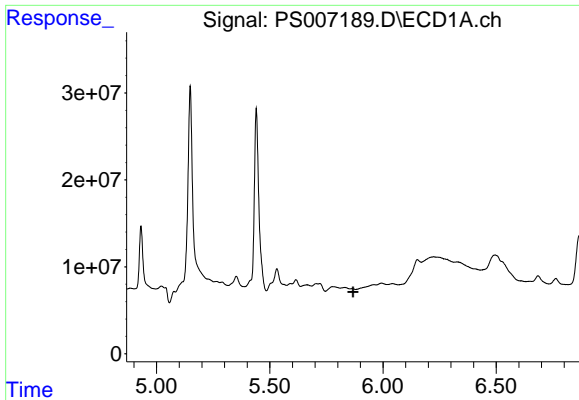
#4 2,4-DCAA  
 R.T.: 5.171 min  
 Delta R.T.: 0.002 min  
 Response: 169851949  
 Conc: 241.50 ng/ml



#5 DICAMBA  
 R.T.: 5.531 min  
 Delta R.T.: -0.054 min  
 Response: 41744198  
 Conc: 8.50 ng/ml



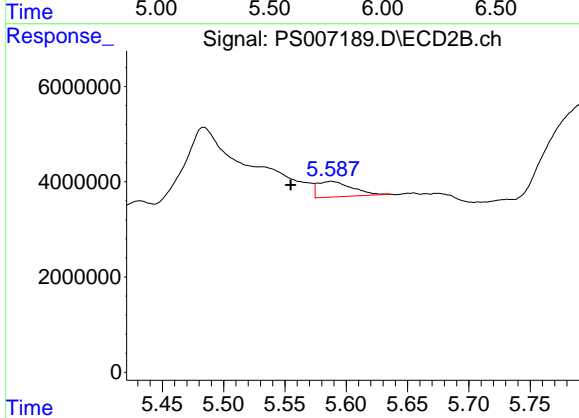
#5 DICAMBA  
 R.T.: 5.300 min  
 Delta R.T.: 0.006 min  
 Response: 10466033  
 Conc: 4.02 ng/ml



#7 MCPA

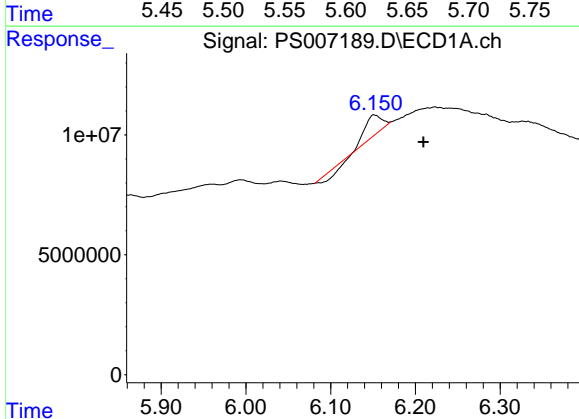
R.T.: 0.000 min  
 Exp R.T.: 5.867 min  
 Response: 0  
 Conc: N.D.

Instrument :  
 ECD\_S  
 ClientSampleId :



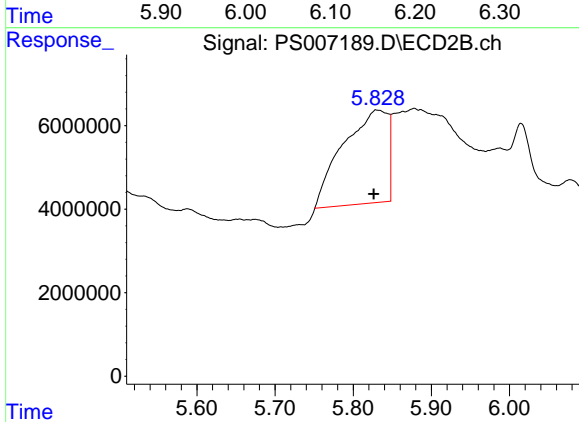
#7 MCPA

R.T.: 5.588 min  
 Delta R.T.: 0.033 min  
 Response: 6320044  
 Conc: 2.17 ug/ml



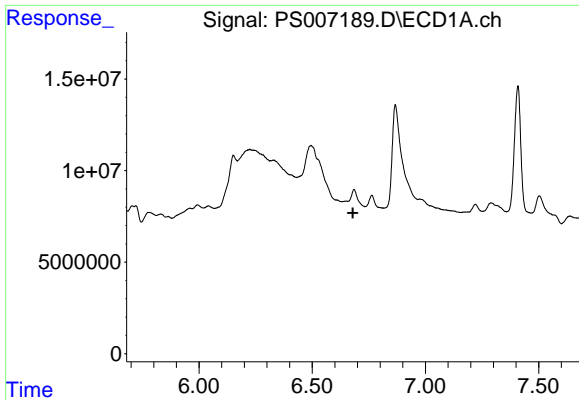
#8 DICHLORPROP

R.T.: 6.152 min  
 Delta R.T.: -0.057 min  
 Response: 9551431  
 Conc: 8.15 ng/ml



#8 DICHLORPROP

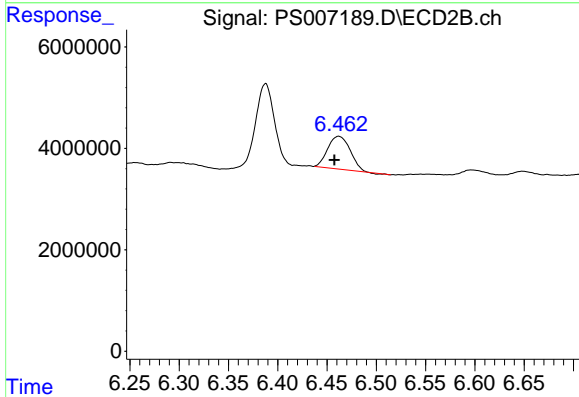
R.T.: 5.831 min  
 Delta R.T.: 0.005 min  
 Response: 88928703  
 Conc: 136.56 ng/ml



#10 Pentachlorophenol

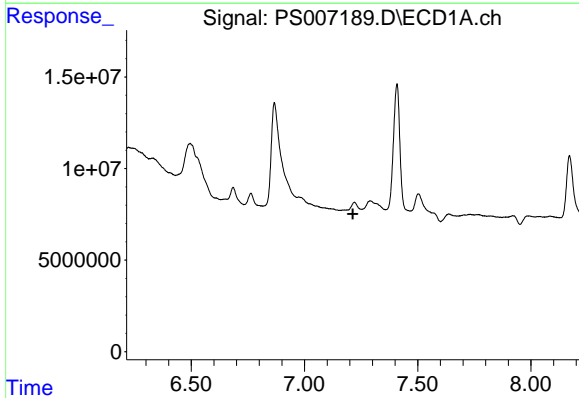
R.T.: 0.000 min  
 Exp R.T.: 6.680 min  
 Response: 0  
 Conc: N.D.

Instrument :  
 ECD\_S  
 ClientSampleId :



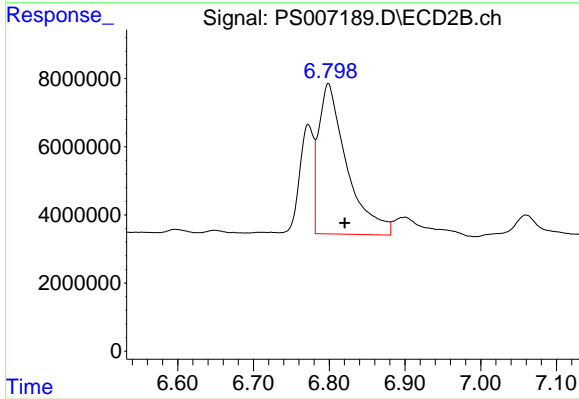
#10 Pentachlorophenol

R.T.: 6.462 min  
 Delta R.T.: 0.004 min  
 Response: 10224972  
 Conc: 1.06 ng/ml



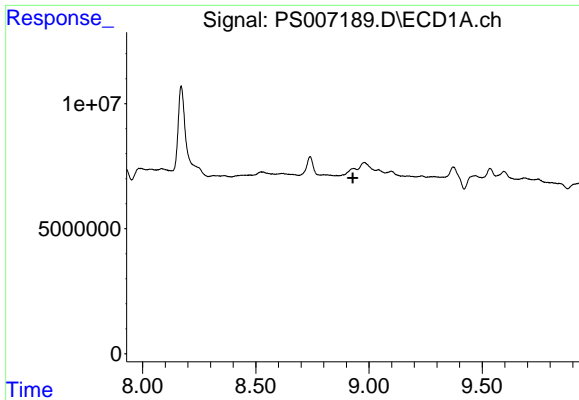
#11 2,4,5-TP (SILVEX)

R.T.: 0.000 min  
 Exp R.T.: 7.214 min  
 Response: 0  
 Conc: N.D.



#11 2,4,5-TP (SILVEX)

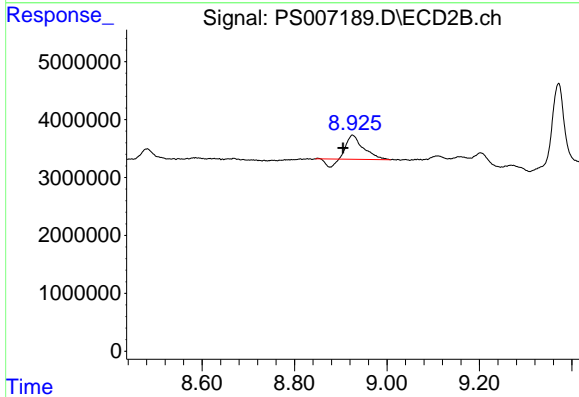
R.T.: 6.799 min  
 Delta R.T.: -0.022 min  
 Response: 113541497  
 Conc: 29.85 ng/ml



#15 Picloram

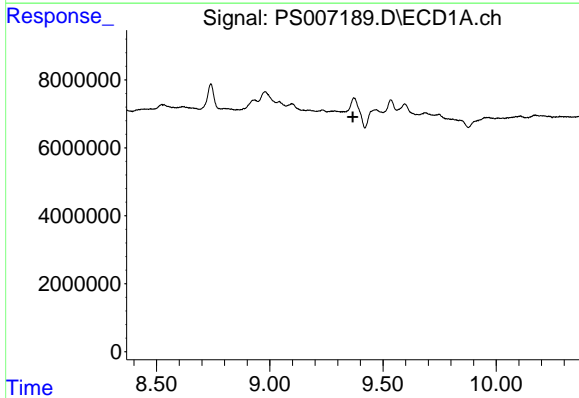
R.T.: 0.000 min  
 Exp R.T. : 8.929 min  
 Response: 0  
 Conc: N.D.

Instrument :  
 ECD\_S  
 ClientSampleId :



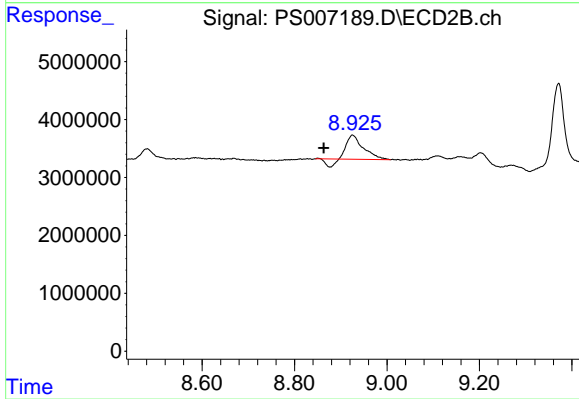
#15 Picloram

R.T.: 8.926 min  
 Delta R.T.: 0.021 min  
 Response: 8998240  
 Conc: 1.47 ng/ml



#16 DCPA

R.T.: 0.000 min  
 Exp R.T. : 9.367 min  
 Response: 0  
 Conc: N.D.



#16 DCPA

R.T.: 8.926 min  
 Delta R.T.: 0.062 min  
 Response: 8998240  
 Conc: 1.79 ng/ml