

Data Path : Z:\pestpcbsrv\HPCHEM1\ECD\_S\Data\PS101619\  
 Data File : PS007191.D  
 Signal(s) : Signal #1: ECD1A.ch Signal #2: ECD2B.ch  
 Acq On : 16 Oct 2019 13:03  
 Operator : SM\AJ  
 Sample : PB123987TB  
 Misc :  
 ALS Vial : 13 Sample Multiplier: 1

Instrument :  
 ECD\_S  
 ClientSampleId :

Integration File signal 1: autoint1.e  
 Integration File signal 2: autoint2.e  
 Quant Time: Oct 16 13:55:18 2019  
 Quant Method : Z:\pestpcbsrv\HPCHEM1\ECD\_S\Method\PS101419.M  
 Quant Title : 8080.M  
 QLast Update : Mon Oct 14 13:54:23 2019  
 Response via : Initial Calibration  
 Integrator: ChemStation

Volume Inj. : 2 µl  
 Signal #1 Phase : Rtx-CLPesticides Signal #2 Phase: Rtx-CLPesticides2  
 Signal #1 Info : 30M x 0.32mm x0.5 Signal #2 Info : 30M x 0.32mm x 0.25µm

Compound	RT#1	RT#2	Resp#1	Resp#2	ng/ml	ng/ml
-----						
System Monitoring Compounds						
4) S 2,4-DCAA	5.457	5.186	559.9E6	297.0E6	409.108	422.231
Target Compounds						
7) T MCPA	0.000	5.498	0	46791352	N.D.	16.095
-----						

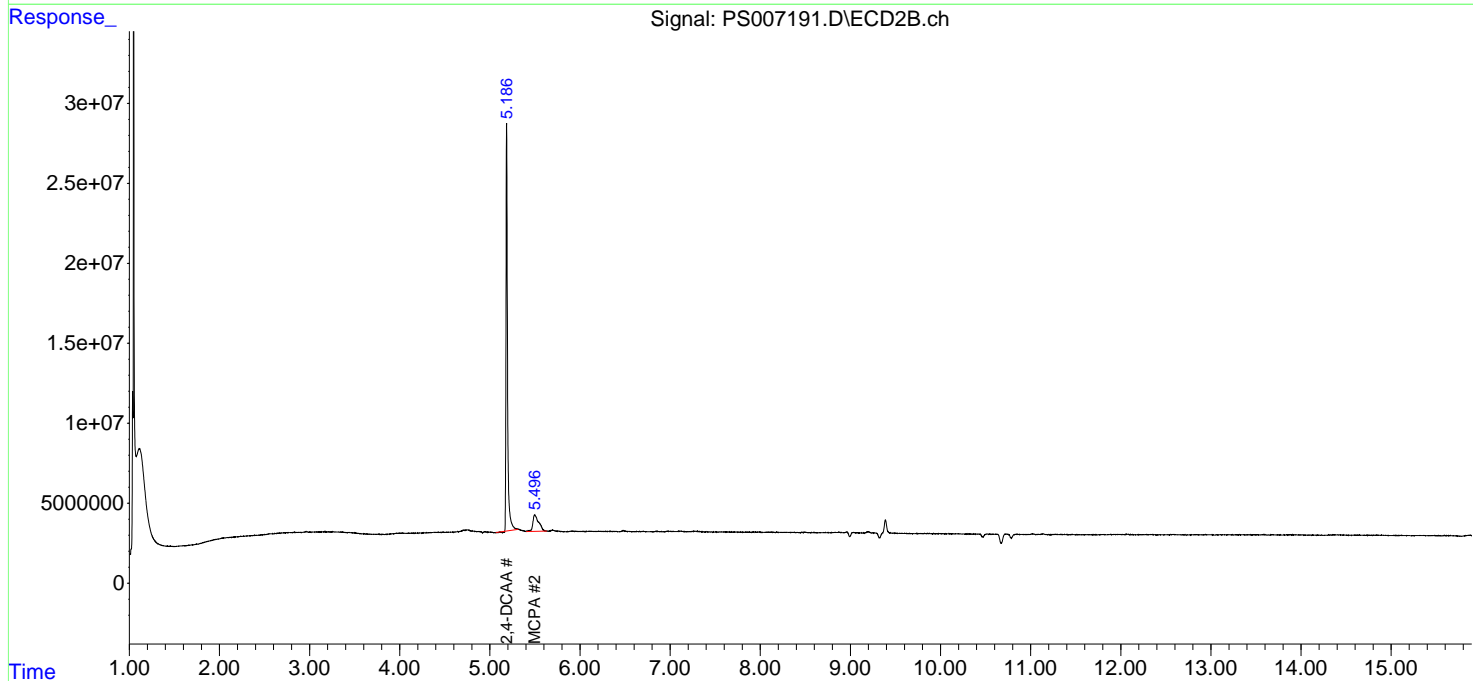
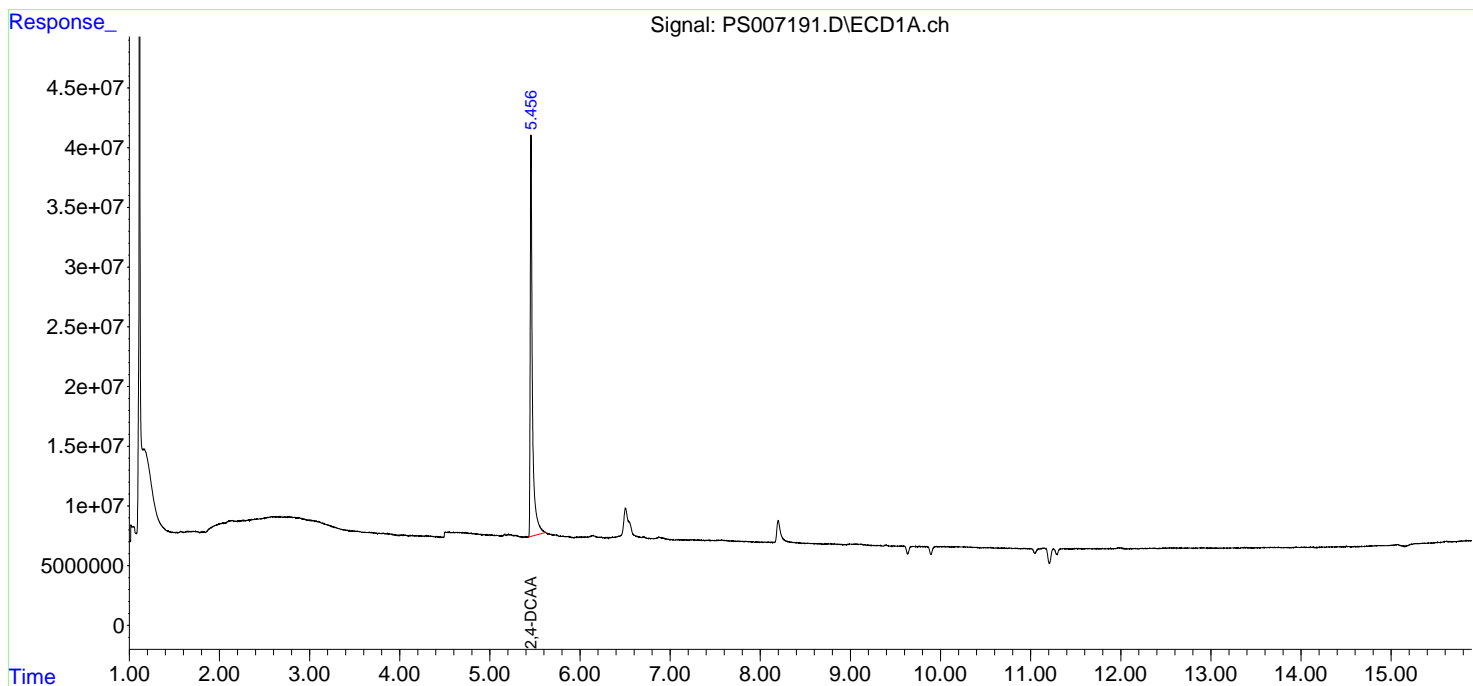
(f)=RT Delta > 1/2 Window (#)=Amounts differ by > 25% (m)=manual int.

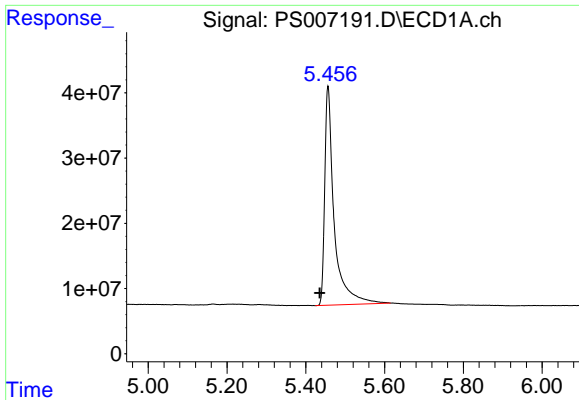
Data Path : Z:\pestpcbsrv\HPCHEM1\ECD\_S\Data\PS101619\  
Data File : PS007191.D  
Signal(s) : Signal #1: ECD1A.ch Signal #2: ECD2B.ch  
Acq On : 16 Oct 2019 13:03  
Operator : SM\AJ  
Sample : PB123987TB  
Misc :  
ALS Vial : 13 Sample Multiplier: 1

Instrument :  
ECD\_S  
ClientSampled :

Integration File signal 1: autoint1.e  
Integration File signal 2: autoint2.e  
Quant Time: Oct 16 13:55:18 2019  
Quant Method : Z:\pestpcbsrv\HPCHEM1\ECD\_S\Method\PS101419.M  
Quant Title : 8080.M  
QLast Update : Mon Oct 14 13:54:23 2019  
Response via : Initial Calibration  
Integrator: ChemStation

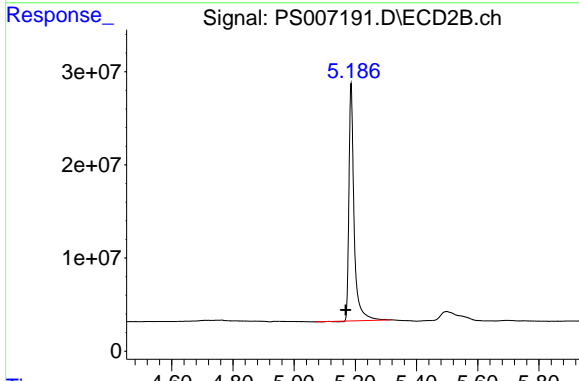
Volume Inj. : 2 µl  
Signal #1 Phase : Rtx-CLPesticides Signal #2 Phase: Rtx-CLPesticides2  
Signal #1 Info : 30M x 0.32mm x 0.5 Signal #2 Info : 30M x 0.32mm x 0.25µm



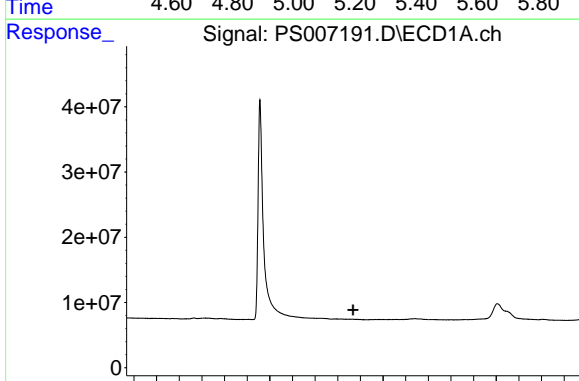


#4 2,4-DCAA  
 R.T.: 5.457 min  
 Delta R.T.: 0.021 min  
 Response: 559932904  
 Conc: 409.11 ng/ml

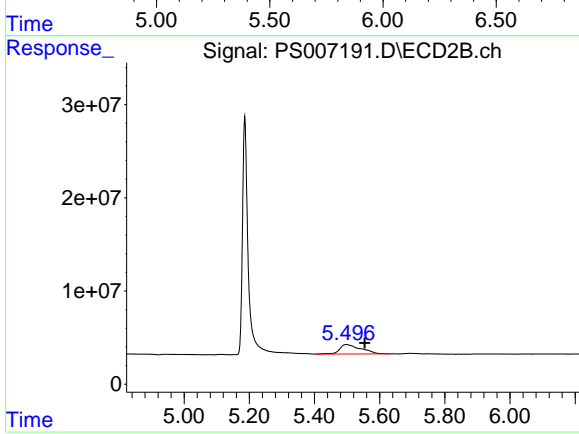
Instrument :  
 ECD\_S  
 ClientSampled :



#4 2,4-DCAA  
 R.T.: 5.186 min  
 Delta R.T.: 0.018 min  
 Response: 296957720  
 Conc: 422.23 ng/ml



#7 MCPA  
 R.T.: 0.000 min  
 Exp R.T. : 5.867 min  
 Response: 0  
 Conc: N.D.



#7 MCPA  
 R.T.: 5.498 min  
 Delta R.T.: -0.057 min  
 Response: 46791352  
 Conc: 16.10 ug/ml