

Data Path : Z:\pestpcbsrv\HPCHEM1\ECD_S\Data\PS101619\
 Data File : PS007192.D
 Signal(s) : Signal #1: ECD1A.ch Signal #2: ECD2B.ch
 Acq On : 16 Oct 2019 13:46
 Operator : SM\AJ
 Sample : I.BLK
 Misc :
 ALS Vial : 2 Sample Multiplier: 1

Instrument :
 ECD_S
 ClientSampleId :

Integration File signal 1: autoint1.e
 Integration File signal 2: autoint2.e
 Quant Time: Oct 16 14:09:46 2019
 Quant Method : Z:\pestpcbsrv\HPCHEM1\ECD_S\Method\PS101419.M
 Quant Title : 8080.M
 QLast Update : Mon Oct 14 13:54:23 2019
 Response via : Initial Calibration
 Integrator: ChemStation

Volume Inj. : 2 µl
 Signal #1 Phase : Rtx-CLPesticides Signal #2 Phase: Rtx-CLPesticides2
 Signal #1 Info : 30M x 0.32mm x0.5 Signal #2 Info : 30M x 0.32mm x 0.25µm

Compound	RT#1	RT#2	Resp#1	Resp#2	ng/ml	ng/ml

System Monitoring Compounds						
4) S 2,4-DCAA	5.448	5.173	599.5E6	317.0E6	438.021	450.711
Target Compounds						
5) T DICAMBA	0.000	5.311	0	6548592	N.D.	2.517
6) T MCPP	0.000	5.311	0	6548592	N.D.	3.452
9) T 2,4-D	6.424	0.000	311.3E6	0	252.578	N.D. #
15) T Picloram	0.000	8.947	0	15591056	N.D.	2.539

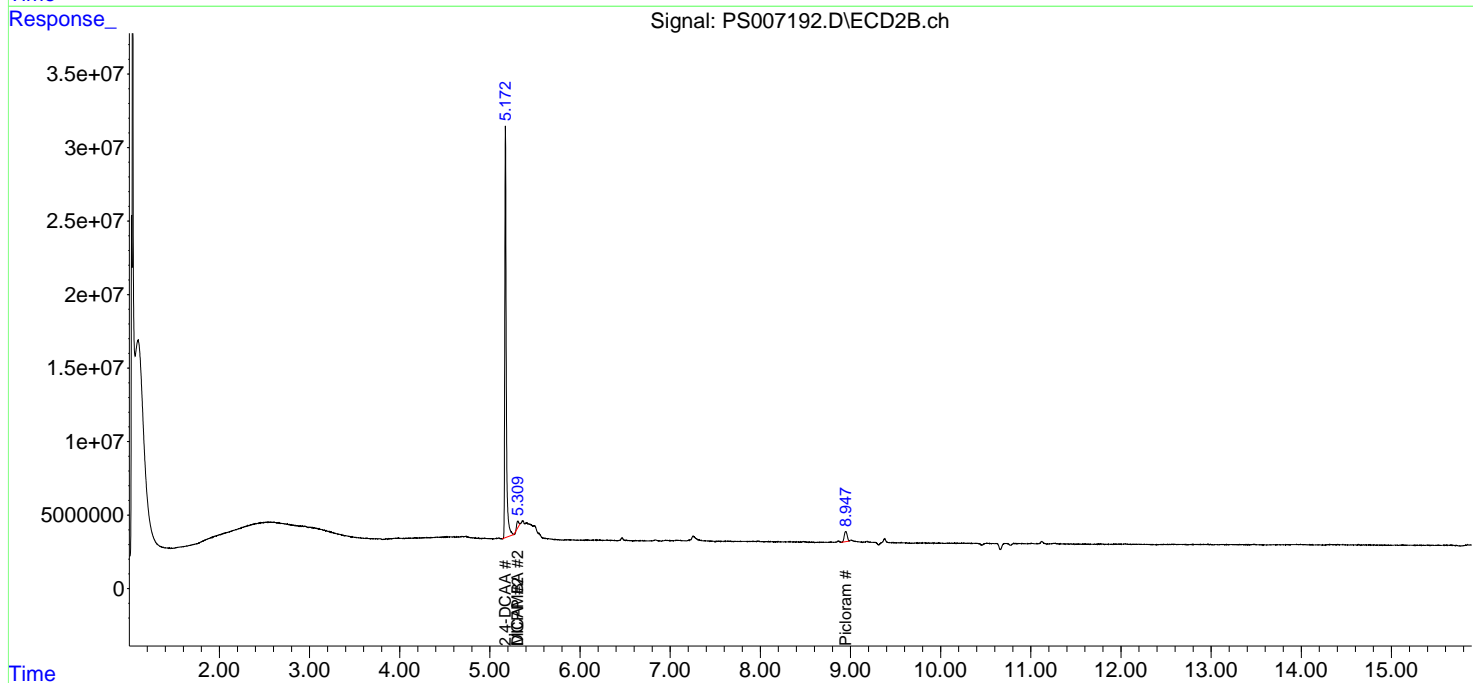
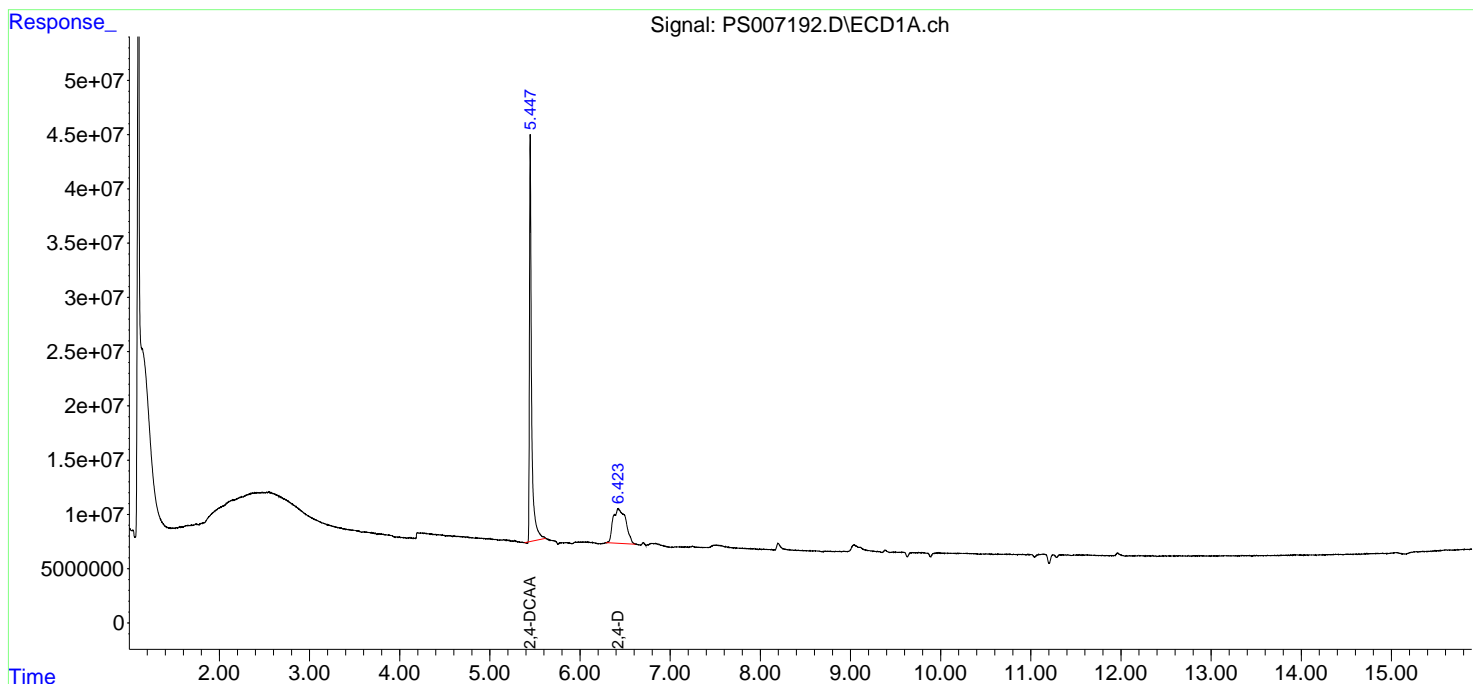
(f)=RT Delta > 1/2 Window (#)=Amounts differ by > 25% (m)=manual int.

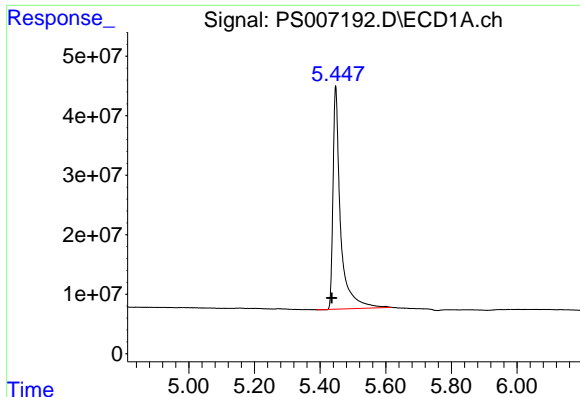
Data Path : Z:\pestpcbsrv\HPCHEM1\ECD_S\Data\PS101619\
 Data File : PS007192.D
 Signal(s) : Signal #1: ECD1A.ch Signal #2: ECD2B.ch
 Acq On : 16 Oct 2019 13:46
 Operator : SM\AJ
 Sample : I.BLK
 Misc :
 ALS Vial : 2 Sample Multiplier: 1

Instrument :
 ECD_S
 ClientSampled :

Integration File signal 1: autoint1.e
 Integration File signal 2: autoint2.e
 Quant Time: Oct 16 14:09:46 2019
 Quant Method : Z:\pestpcbsrv\HPCHEM1\ECD_S\Method\PS101419.M
 Quant Title : 8080.M
 QLast Update : Mon Oct 14 13:54:23 2019
 Response via : Initial Calibration
 Integrator: ChemStation

Volume Inj. : 2 µl
 Signal #1 Phase : Rtx-CLPesticides Signal #2 Phase: Rtx-CLPesticides2
 Signal #1 Info : 30M x 0.32mm x0.5 Signal #2 Info : 30M x 0.32mm x 0.25µm

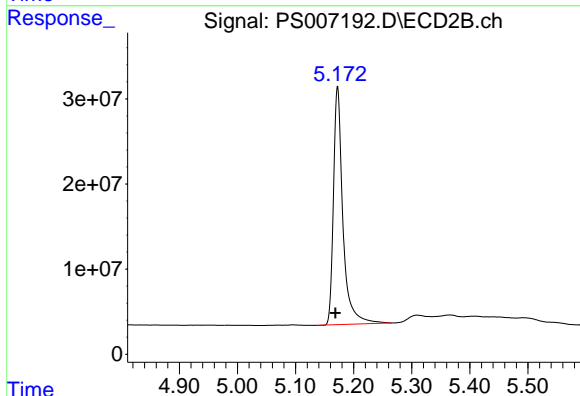




#4 2,4-DCAA

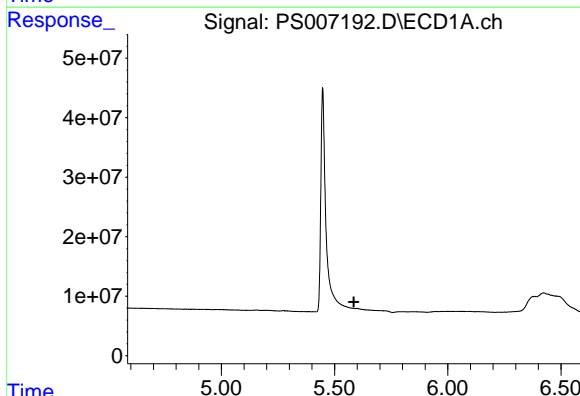
R.T.: 5.448 min
 Delta R.T.: 0.012 min
 Response: 599505553
 Conc: 438.02 ng/ml

Instrument :
 ECD_S
 ClientSampled :



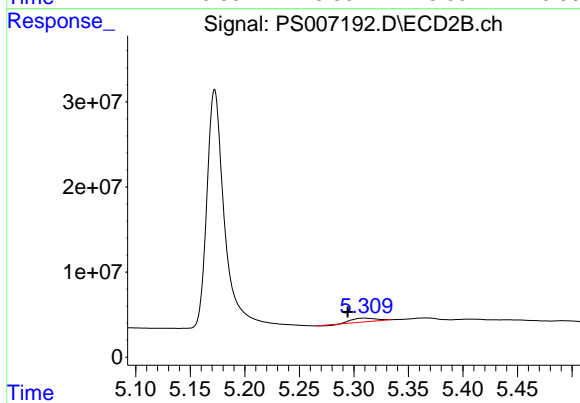
#4 2,4-DCAA

R.T.: 5.173 min
 Delta R.T.: 0.004 min
 Response: 316987835
 Conc: 450.71 ng/ml



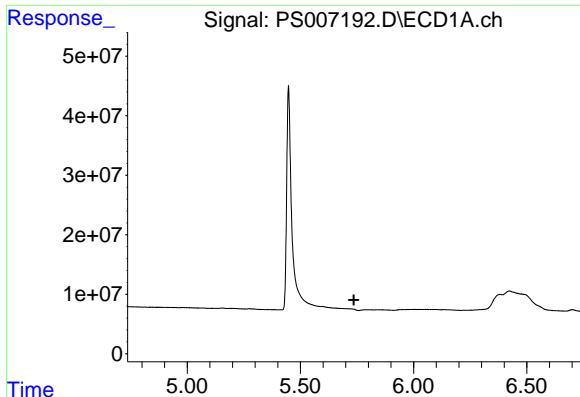
#5 DICAMBA

R.T.: 0.000 min
 Exp R.T. : 5.585 min
 Response: 0
 Conc: N.D.



#5 DICAMBA

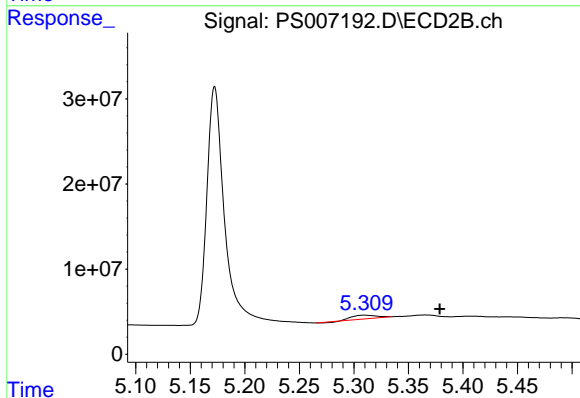
R.T.: 5.311 min
 Delta R.T.: 0.017 min
 Response: 6548592
 Conc: 2.52 ng/ml



#6 MCPP

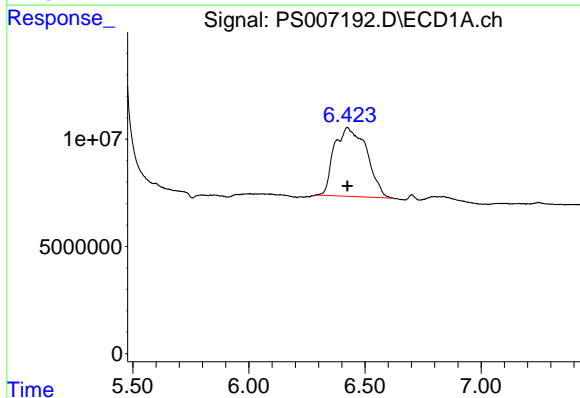
R.T.: 0.000 min
 Exp R.T.: 5.736 min
 Response: 0
 Conc: N.D.

Instrument :
 ECD_S
 ClientSampled :



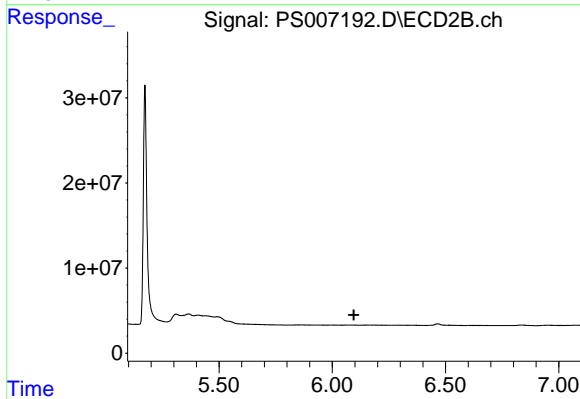
#6 MCPP

R.T.: 5.311 min
 Delta R.T.: -0.068 min
 Response: 6548592
 Conc: 3.45 ug/ml



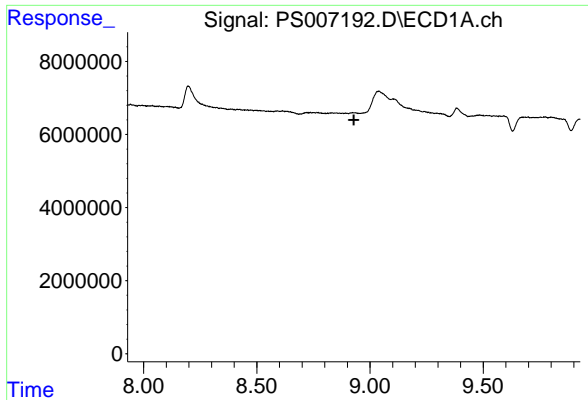
#9 2,4-D

R.T.: 6.424 min
 Delta R.T.: 0.000 min
 Response: 311262576
 Conc: 252.58 ng/ml



#9 2,4-D

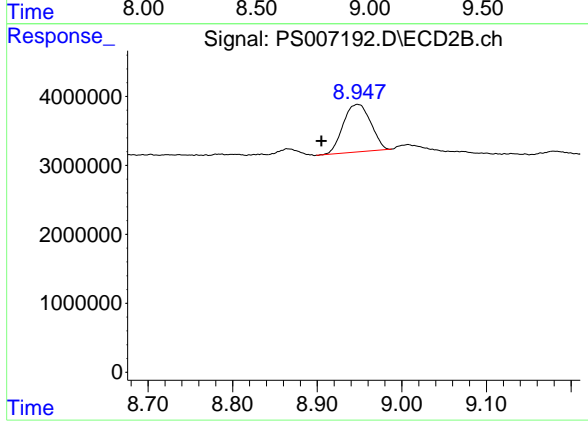
R.T.: 0.000 min
 Exp R.T.: 6.095 min
 Response: 0
 Conc: N.D.



#15 Picloram

R.T.: 0.000 min
 Exp R.T.: 8.929 min
 Response: 0
 Conc: N.D.

Instrument :
 ECD_S
 ClientSampleId :



#15 Picloram

R.T.: 8.947 min
 Delta R.T.: 0.043 min
 Response: 15591056
 Conc: 2.54 ng/ml