

Data Path : Z:\pestpcbsrv\HPCHEM1\ECD\_S\Data\PS101620\  
 Data File : PS012881.D  
 Signal(s) : Signal #1: ECD1A.ch Signal #2: ECD2B.ch  
 Acq On : 16 Oct 2020 20:03  
 Operator : DD\AJ  
 Sample : L4406-08  
 Misc :  
 ALS Vial : 12 Sample Multiplier: 1

Instrument :  
 ECD\_S  
 ClientSampleId :  
 JC-02-101420-A

Integration File signal 1: autoint1.e  
 Integration File signal 2: autoint2.e  
 Quant Time: Oct 17 01:54:40 2020  
 Quant Method : Z:\pestpcbsrv\HPCHEM1\ECD\_S\Method\PS092220.M  
 Quant Title : 8080.M  
 QLast Update : Wed Sep 23 04:57:25 2020  
 Response via : Initial Calibration  
 Integrator: ChemStation

Volume Inj. : 2 µl  
 Signal #1 Phase : Rtx-CLPesticides Signal #2 Phase: Rtx-CLPesticides2  
 Signal #1 Info : 30M x 0.32mm x0.5 Signal #2 Info : 30M x 0.32mm x 0.25µm

Compound	RT#1	RT#2	Resp#1	Resp#2	ng/ml	ng/ml
-----						
System Monitoring Compounds						
4) S 2,4-DCAA	7.216	6.913	347.6E6	189.2E6	354.845	411.210

Target Compounds

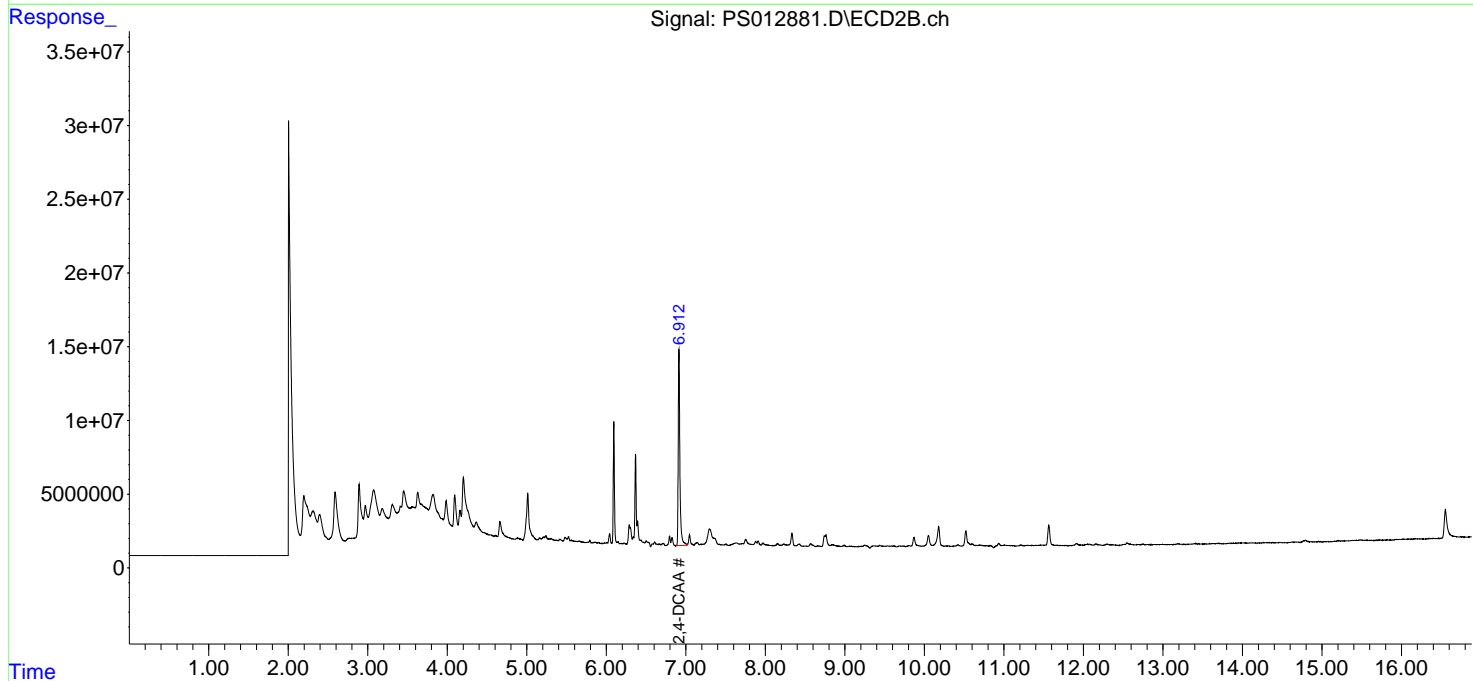
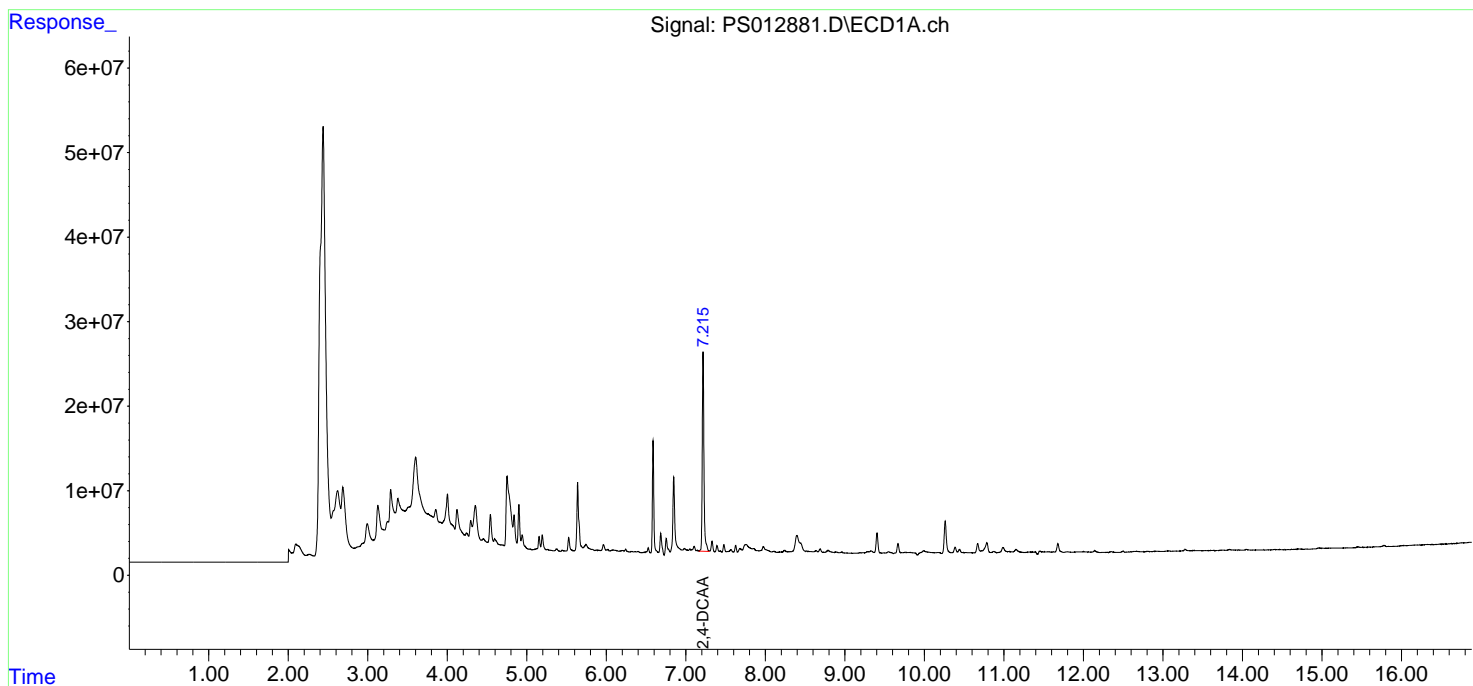
(f)=RT Delta > 1/2 Window (#)=Amounts differ by > 25% (m)=manual int.

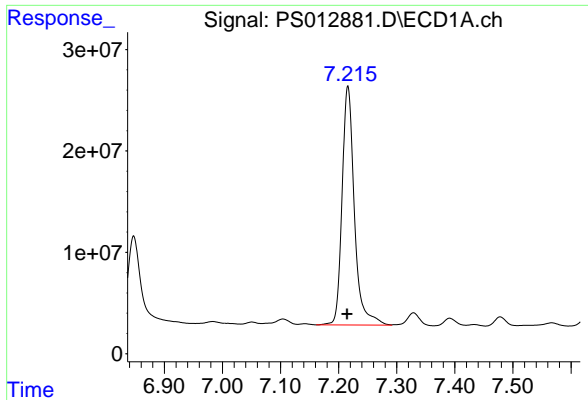
Data Path : Z:\pestpcbsrv\HPCHEM1\ECD\_S\Data\PS101620\  
 Data File : PS012881.D  
 Signal(s) : Signal #1: ECD1A.ch Signal #2: ECD2B.ch  
 Acq On : 16 Oct 2020 20:03  
 Operator : DD\AJ  
 Sample : L4406-08  
 Misc :  
 ALS Vial : 12 Sample Multiplier: 1

Instrument :  
 ECD\_S  
 ClientSampled :  
 JC-02-101420-A

Integration File signal 1: autoint1.e  
 Integration File signal 2: autoint2.e  
 Quant Time: Oct 17 01:54:40 2020  
 Quant Method : Z:\pestpcbsrv\HPCHEM1\ECD\_S\Method\PS092220.M  
 Quant Title : 8080.M  
 QLast Update : Wed Sep 23 04:57:25 2020  
 Response via : Initial Calibration  
 Integrator: ChemStation

Volume Inj. : 2 µl  
 Signal #1 Phase : Rtx-CLPesticides Signal #2 Phase: Rtx-CLPesticides2  
 Signal #1 Info : 30M x 0.32mm x 0.5 Signal #2 Info : 30M x 0.32mm x 0.25µm

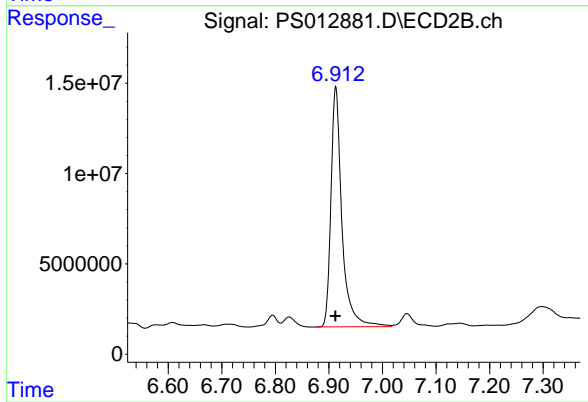




#4 2,4-DCAA

R.T.: 7.216 min  
Delta R.T.: 0.001 min  
Response: 347552664  
Conc: 354.85 ng/ml

Instrument :  
ECD\_S  
ClientSampleId :  
JC-02-101420-A



#4 2,4-DCAA

R.T.: 6.913 min  
Delta R.T.: 0.000 min  
Response: 189163415  
Conc: 411.21 ng/ml