

Data Path : Z:\pestpcbsrv\HPCHEM1\ECD_S\Data\PS101719\
 Data File : PS007217.D
 Signal(s) : Signal #1: ECD1A.ch Signal #2: ECD2B.ch
 Acq On : 17 Oct 2019 23:54
 Operator : SM\AJ
 Sample : K5393-26
 Misc :
 ALS Vial : 22 Sample Multiplier: 1

Instrument :
 ECD_S
 ClientSampleId :
 T-16-G1-(0-27)

Integration File signal 1: autoint1.e
 Integration File signal 2: autoint2.e
 Quant Time: Oct 18 00:57:38 2019
 Quant Method : Z:\pestpcbsrv\HPCHEM1\ECD_S\Method\PS101419.M
 Quant Title : 8080.M
 QLast Update : Mon Oct 14 13:54:23 2019
 Response via : Initial Calibration
 Integrator: ChemStation

Volume Inj. : 2 µl
 Signal #1 Phase : Rtx-CLPesticides Signal #2 Phase: Rtx-CLPesticides2
 Signal #1 Info : 30M x 0.32mm x0.5 Signal #2 Info : 30M x 0.32mm x 0.25µm

Compound	RT#1	RT#2	Resp#1	Resp#2	ng/ml	ng/ml
----------	------	------	--------	--------	-------	-------

 System Monitoring Compounds

4) S	2,4-DCAA	5.438	5.169	681.1E6	378.7E6	497.632	538.516
------	----------	-------	-------	---------	---------	---------	---------

Target Compounds

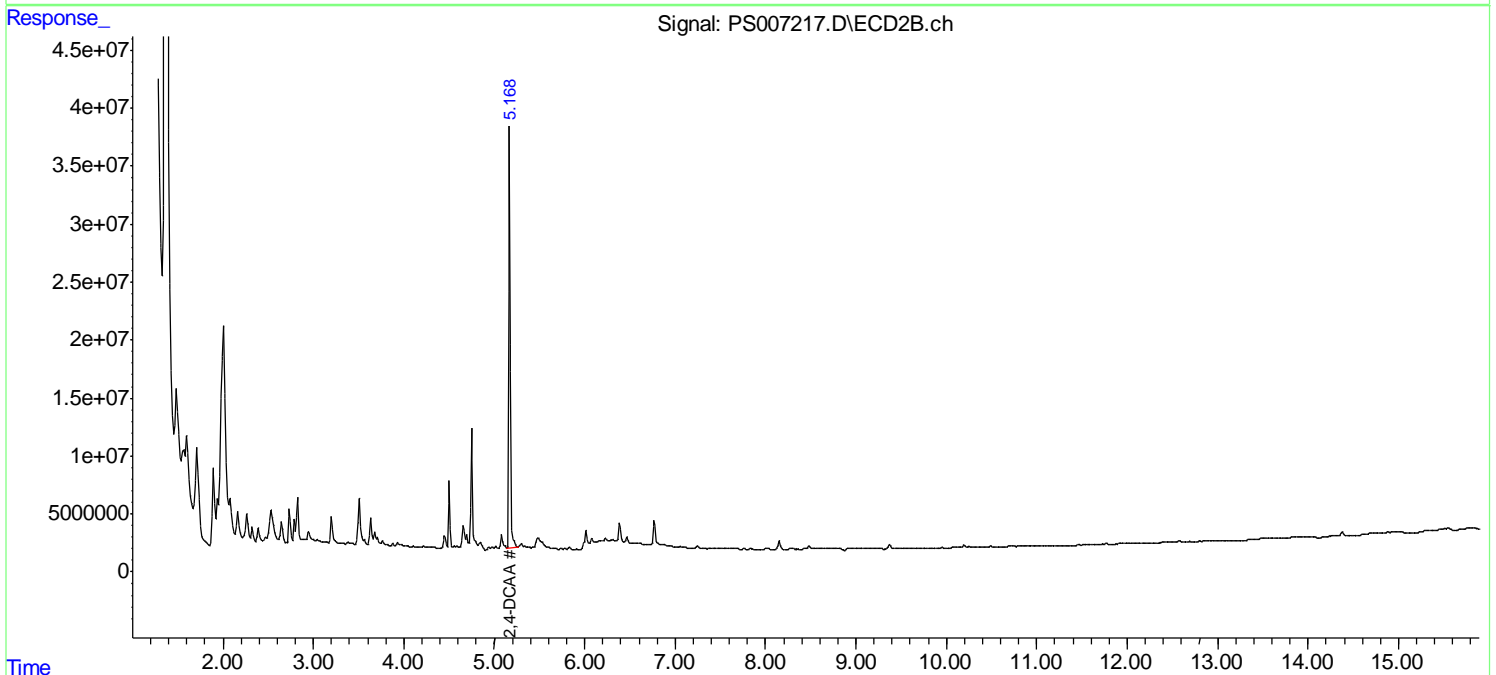
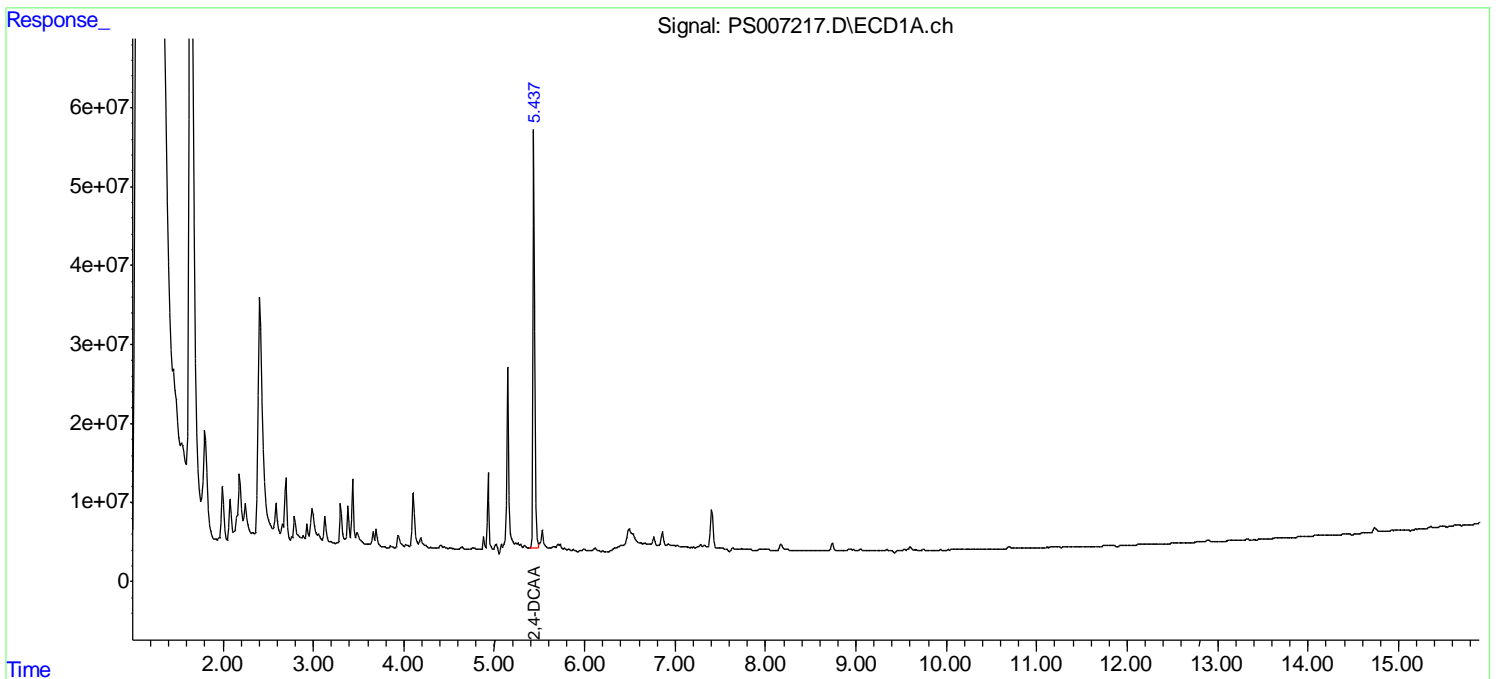
(f)=RT Delta > 1/2 Window (#)=Amounts differ by > 25% (m)=manual int.

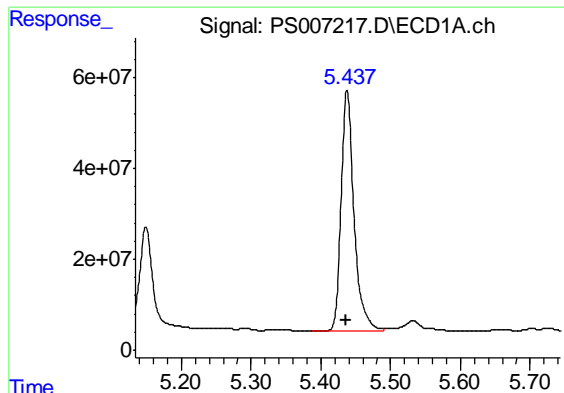
Data Path : Z:\pestpcbsrv\HPCHEM1\ECD_S\Data\PS101719\
 Data File : PS007217.D
 Signal(s) : Signal #1: ECD1A.ch Signal #2: ECD2B.ch
 Acq On : 17 Oct 2019 23:54
 Operator : SM\AJ
 Sample : K5393-26
 Misc :
 ALS Vial : 22 Sample Multiplier: 1

Instrument :
 ECD_S
 ClientSampleId :
 T-16-G1-(0-27)

Integration File signal 1: autoint1.e
 Integration File signal 2: autoint2.e
 Quant Time: Oct 18 00:57:38 2019
 Quant Method : Z:\pestpcbsrv\HPCHEM1\ECD_S\Method\PS101419.M
 Quant Title : 8080.M
 QLast Update : Mon Oct 14 13:54:23 2019
 Response via : Initial Calibration
 Integrator: ChemStation

Volume Inj. : 2 µl
 Signal #1 Phase : Rtx-CLPesticides Signal #2 Phase: Rtx-CLPesticides2
 Signal #1 Info : 30M x 0.32mm x0.5 Signal #2 Info : 30M x 0.32mm x 0.25µm

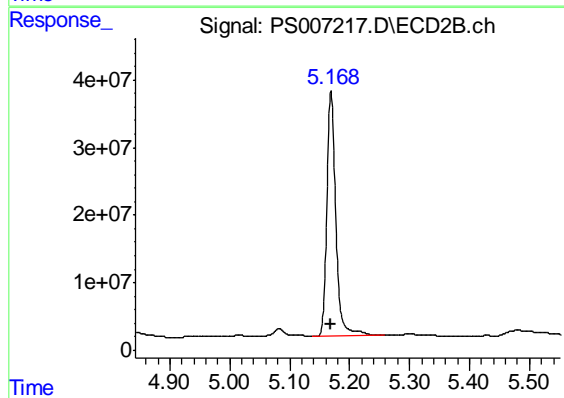




#4 2,4-DCAA

R.T.: 5.438 min
Delta R.T.: 0.002 min
Response: 681093767
Conc: 497.63 ng/ml

Instrument :
ECD_S
ClientSampleId :
T-16-G1-(0-27)



#4 2,4-DCAA

R.T.: 5.169 min
Delta R.T.: 0.000 min
Response: 378741540
Conc: 538.52 ng/ml