

Data Path : Z:\pestpcbsrv\HPCHEM1\ECD_S\Data\PS101723\
 Data File : PS024634.D
 Signal(s) : Signal #1: ECD1A.ch Signal #2: ECD2B.ch
 Acq On : 17 Oct 2023 08:45
 Operator : AR\AJ
 Sample : I.BLK
 Misc :
 ALS Vial : 2 Sample Multiplier: 1

Instrument :
 ECD_S
 ClientSampleId :

Integration File signal 1: autoint1.e
 Integration File signal 2: autoint2.e
 Quant Time: Oct 18 01:27:17 2023
 Quant Method : Z:\pestpcbsrv\HPCHEM1\ECD_S\Method\PS100323.M
 Quant Title : 8080.M
 QLast Update : Tue Oct 03 14:54:54 2023
 Response via : Initial Calibration
 Integrator: ChemStation

Volume Inj. : 2 µl
 Signal #1 Phase : Rtx-CLPesticides Signal #2 Phase: Rtx-CLPesticides2
 Signal #1 Info : 30M x 0.32mm x0.5 Signal #2 Info : 30M x 0.32mm x 0.25µm

Compound	RT#1	RT#2	Resp#1	Resp#2	ng/ml	ng/ml

System Monitoring Compounds						
4) S 2,4-DCAA	6.358	6.780	1041.7E6	341.2E6	506.327	493.536
Target Compounds						
1) T Dalapon	2.517f	2.572	7863238	3474221	3.183	3.104
7) T MCPA	0.000	7.247	0	7458065	N.D.	2.328
8) T DICHLORPROP	0.000	7.575	0	956616	N.D.	1.272
9) T 2,4-D	0.000	7.788f	0	309039	N.D.	<MDL
11) T 2,4,5-TP ...	0.000	8.620	0	253347	N.D.	<MDL
12) T 2,4,5-T	0.000	9.037	0	1994049	N.D.	<MDL
15) T Picloram	9.689	10.780	37114802	10874706	2.129	1.750
16) T DCPA	0.000	10.780	0	10874706	N.D.	2.084

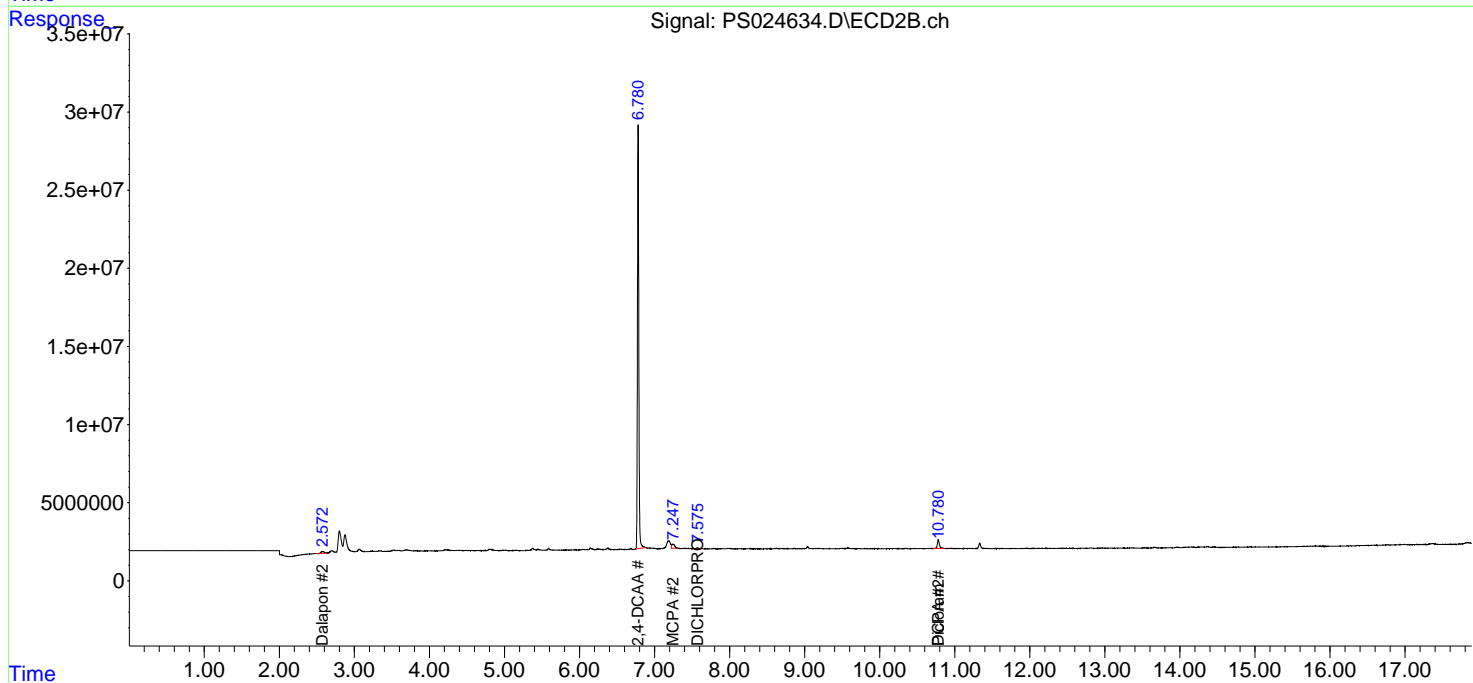
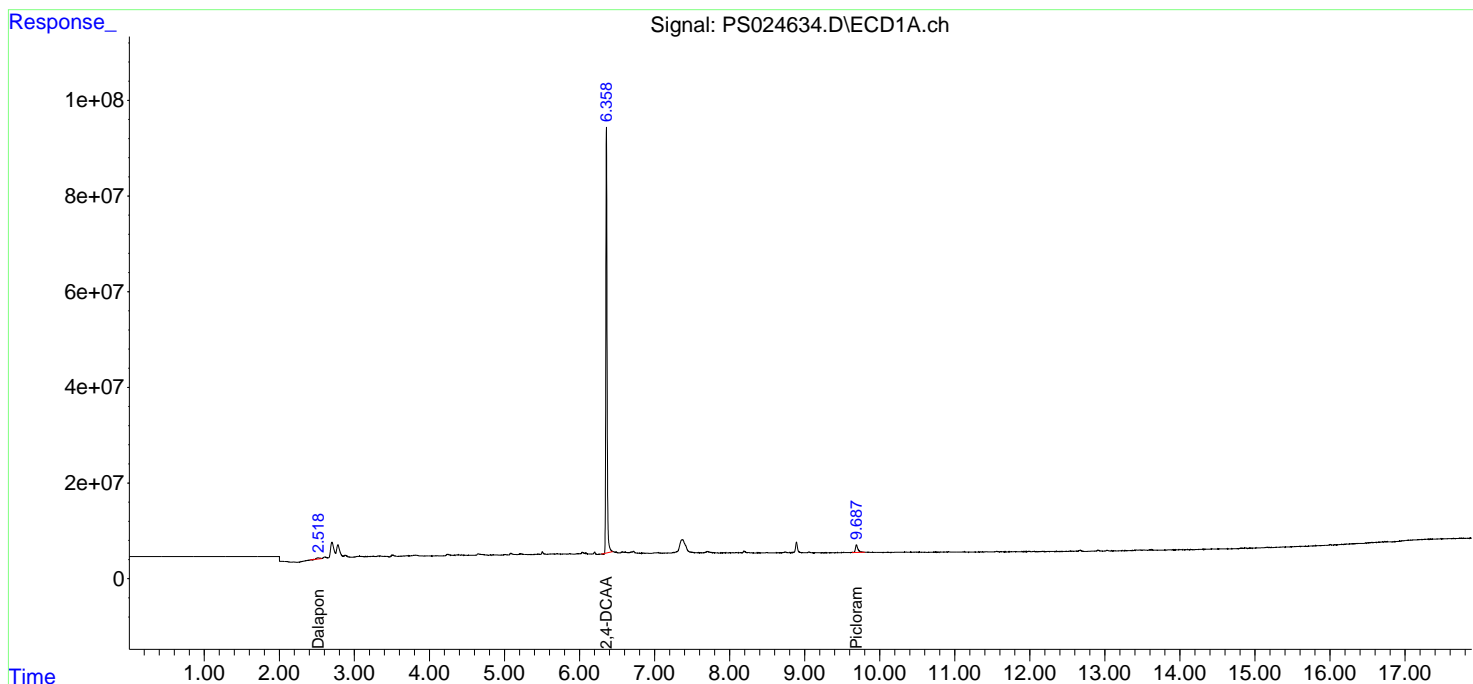
(f)=RT Delta > 1/2 Window (#)=Amounts differ by > 25% (m)=manual int.

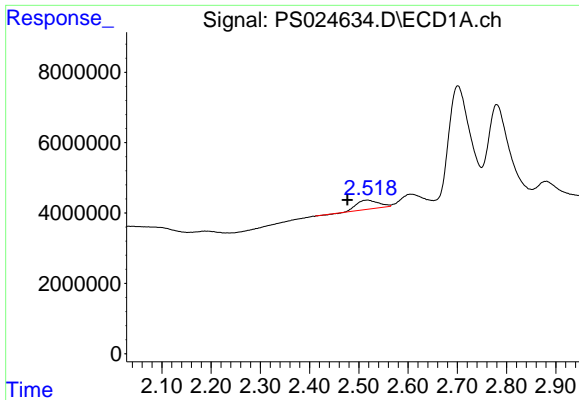
Data Path : Z:\pestpcbsrv\HPCHEM1\ECD_S\Data\PS101723\
 Data File : PS024634.D
 Signal(s) : Signal #1: ECD1A.ch Signal #2: ECD2B.ch
 Acq On : 17 Oct 2023 08:45
 Operator : AR\AJ
 Sample : I.BLK
 Misc :
 ALS Vial : 2 Sample Multiplier: 1

Instrument :
 ECD_S
 ClientSampleId :

Integration File signal 1: autoint1.e
 Integration File signal 2: autoint2.e
 Quant Time: Oct 18 01:27:17 2023
 Quant Method : Z:\pestpcbsrv\HPCHEM1\ECD_S\Method\PS100323.M
 Quant Title : 8080.M
 QLast Update : Tue Oct 03 14:54:54 2023
 Response via : Initial Calibration
 Integrator: ChemStation

Volume Inj. : 2 µl
 Signal #1 Phase : Rtx-CLPesticides Signal #2 Phase: Rtx-CLPesticides2
 Signal #1 Info : 30M x 0.32mm x 0.5 Signal #2 Info : 30M x 0.32mm x 0.25µm

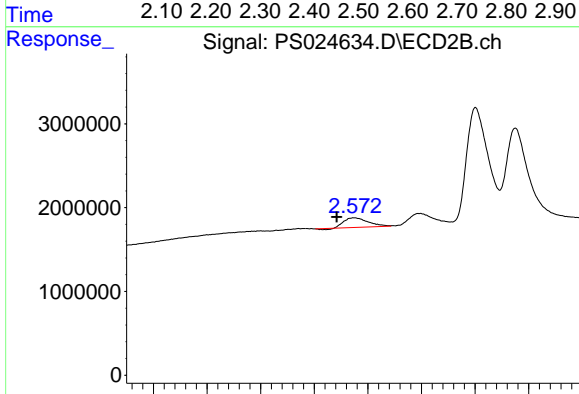




#1 Dalapon

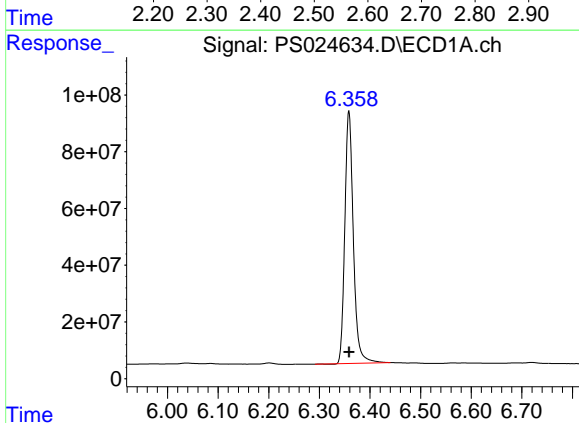
R.T.: 2.517 min
 Delta R.T.: 0.040 min
 Response: 7863238
 Conc: 3.18 ng/ml

Instrument :
 ECD_S
 ClientSampleId :



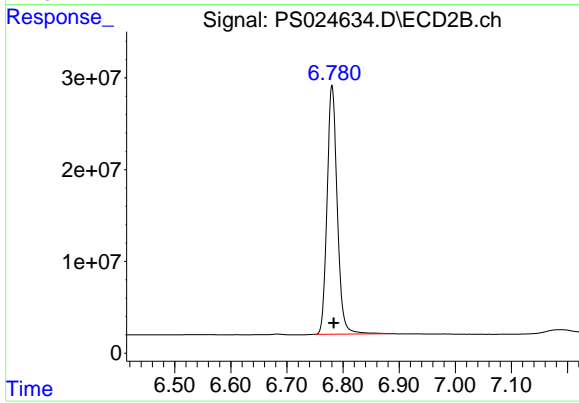
#1 Dalapon

R.T.: 2.572 min
 Delta R.T.: 0.030 min
 Response: 3474221
 Conc: 3.10 ng/ml



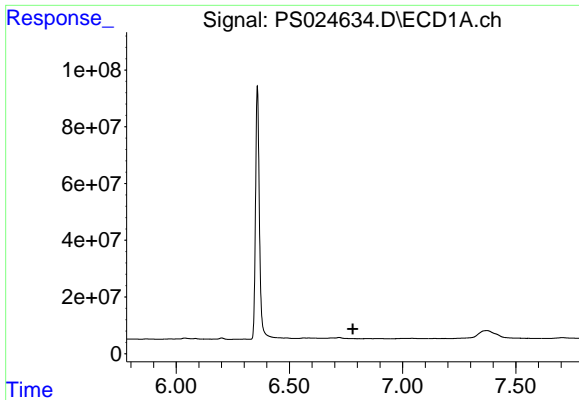
#4 2,4-DCAA

R.T.: 6.358 min
 Delta R.T.: 0.000 min
 Response: 1041682018
 Conc: 506.33 ng/ml



#4 2,4-DCAA

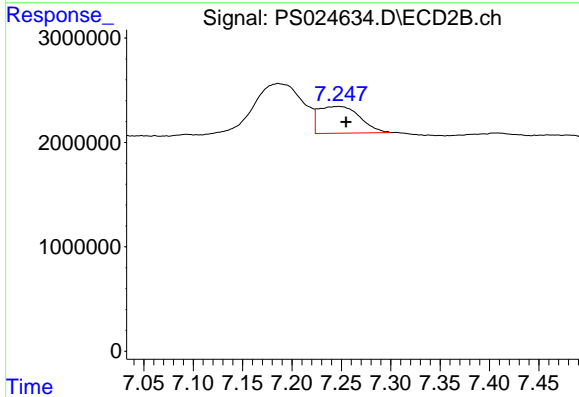
R.T.: 6.780 min
 Delta R.T.: -0.003 min
 Response: 341176910
 Conc: 493.54 ng/ml



#7 MCPA

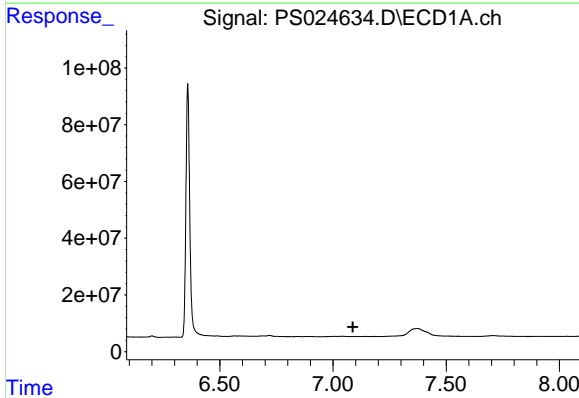
R.T.: 0.000 min
 Exp R.T.: 6.780 min
 Response: 0
 Conc: N.D.

Instrument :
 ECD_S
 ClientSampleId :



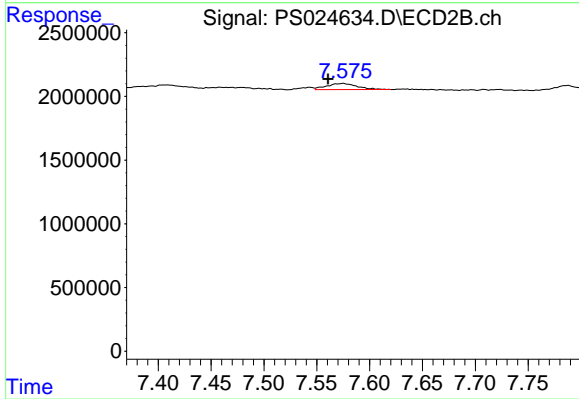
#7 MCPA

R.T.: 7.247 min
 Delta R.T.: -0.007 min
 Response: 7458065
 Conc: 2.33 ug/ml



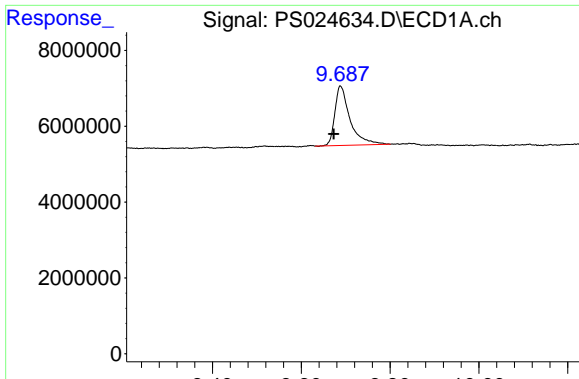
#8 DICHLORPROP

R.T.: 0.000 min
 Exp R.T.: 7.088 min
 Response: 0
 Conc: N.D.



#8 DICHLORPROP

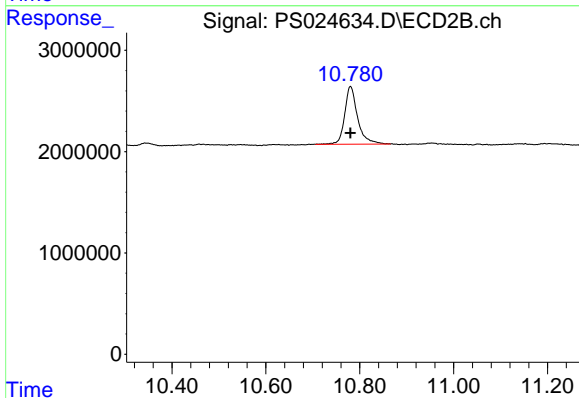
R.T.: 7.575 min
 Delta R.T.: 0.014 min
 Response: 956616
 Conc: 1.27 ng/ml



#15 Picloram

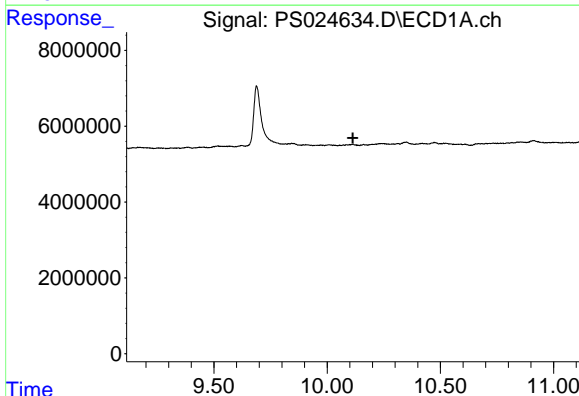
R.T.: 9.689 min
 Delta R.T.: 0.015 min
 Response: 37114802
 Conc: 2.13 ng/ml

Instrument :
 ECD_S
 ClientSampleId :



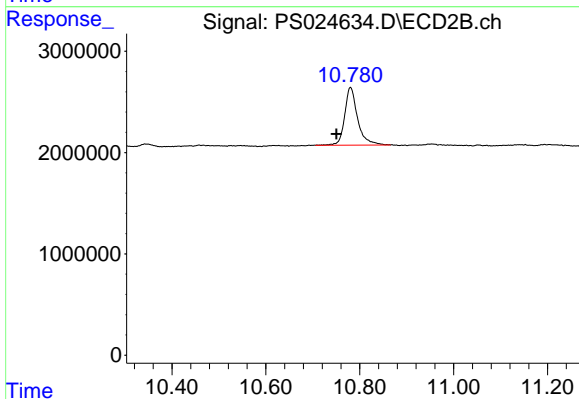
#15 Picloram

R.T.: 10.780 min
 Delta R.T.: 0.000 min
 Response: 10874706
 Conc: 1.75 ng/ml



#16 DCPA

R.T.: 0.000 min
 Exp R.T. : 10.114 min
 Response: 0
 Conc: N.D.



#16 DCPA

R.T.: 10.780 min
 Delta R.T.: 0.030 min
 Response: 10874706
 Conc: 2.08 ng/ml