

Data Path : Z:\pestpcbsrv\HPCHEM1\ECD\_S\Data\PS101723\  
 Data File : PS024639.D  
 Signal(s) : Signal #1: ECD1A.ch Signal #2: ECD2B.ch  
 Acq On : 17 Oct 2023 12:45  
 Operator : AR\AJ  
 Sample : 04887-02MS  
 Misc :  
 ALS Vial : 7 Sample Multiplier: 1

Instrument :  
 ECD\_S  
 ClientSampleId :

Integration File signal 1: autoint1.e  
 Integration File signal 2: autoint2.e  
 Quant Time: Oct 18 01:31:12 2023  
 Quant Method : Z:\pestpcbsrv\HPCHEM1\ECD\_S\Method\PS100323.M  
 Quant Title : 8080.M  
 QLast Update : Tue Oct 03 14:54:54 2023  
 Response via : Initial Calibration  
 Integrator: ChemStation

Volume Inj. : 2 µl  
 Signal #1 Phase : Rtx-CLPesticides Signal #2 Phase: Rtx-CLPesticides2  
 Signal #1 Info : 30M x 0.32mm x0.5 Signal #2 Info : 30M x 0.32mm x 0.25µm

Compound	RT#1	RT#2	Resp#1	Resp#2	ng/ml	ng/ml
System Monitoring Compounds						
4) S 2,4-DCAA	6.361	6.781	974.4E6	215.7E6	473.639	311.961 #
Target Compounds						
1) T Dalapon	2.477	2.540	1002.0E6	461.9E6	405.589	412.739
2) T 3,5-DICHL...	5.733	5.967	1474.9E6	473.1E6	470.189	435.388
3) T 4-Nitroph...	6.202	6.444f	14726098	24931904	10.879	54.659 #
5) T DICAMBA	6.500	6.942	4041.7E6	1302.1E6	450.547	439.704
6) T MCPP	6.650	7.037	290.8E6	88306670	45.895	44.812
7) T MCPA	6.772	7.243	379.0E6	156.0E6	42.526	48.684
8) T DICHLORPROP	7.087	7.556	1086.4E6	364.2E6	462.130	484.259
9) T 2,4-D	7.285	7.839	1361.4E6	463.9E6	492.732	504.016
10) T Pentachlo...	7.514	8.264	11873.1E6	3643.7E6	365.160	334.403
11) T 2,4,5-TP ...	8.036	8.622	6700.4E6	2279.3E6	483.604	537.421
12) T 2,4,5-T	8.292	8.992	6575.8E6	1937.0E6	503.309	469.735
13) T 2,4-DB	8.797	9.495	910.6E6	237.9E6	445.732	466.908
14) T DINOSEB	9.848	9.823	2542.7E6	941.5E6	248.733	303.595
15) T Picloram	9.674	10.773	7516.3E6	2632.3E6	431.072	423.589
16) T DCPA	10.114	10.745	8190.9E6	2378.9E6	481.174	455.950

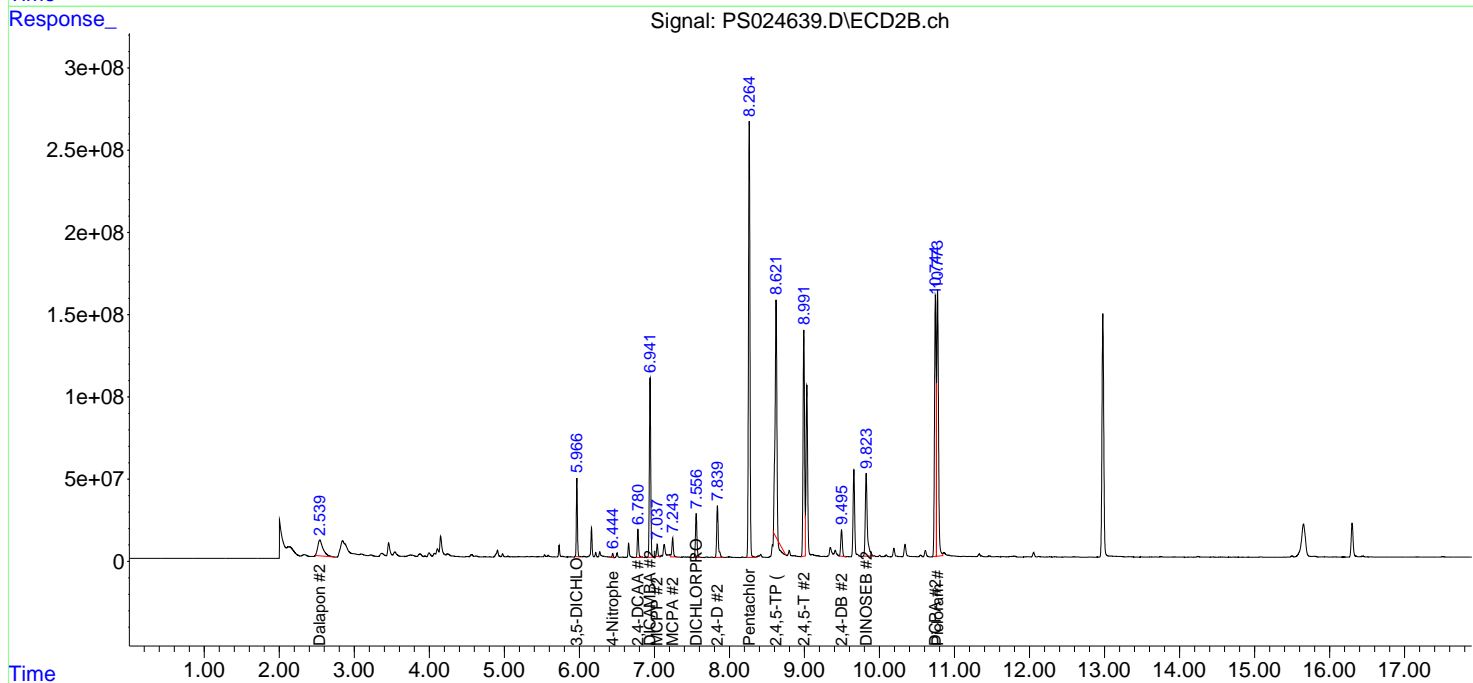
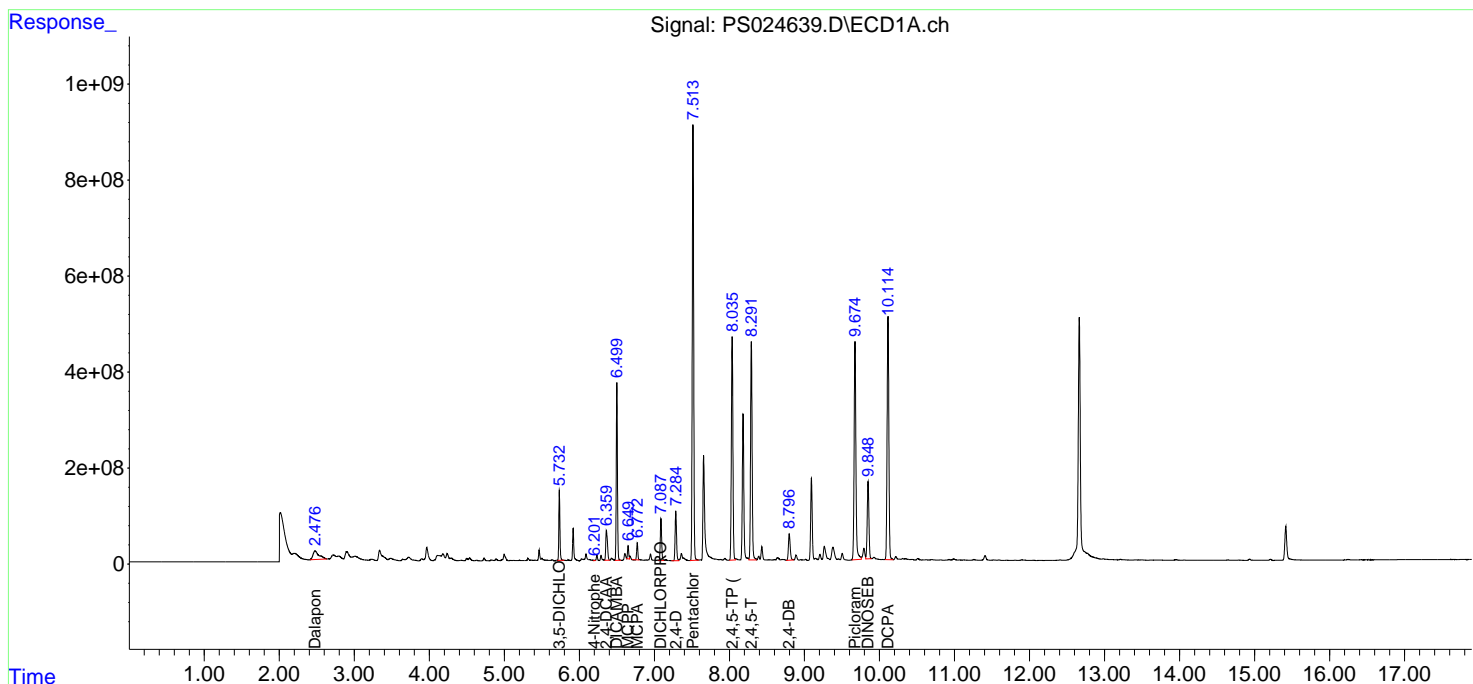
(f)=RT Delta > 1/2 Window (#)=Amounts differ by > 25% (m)=manual int.

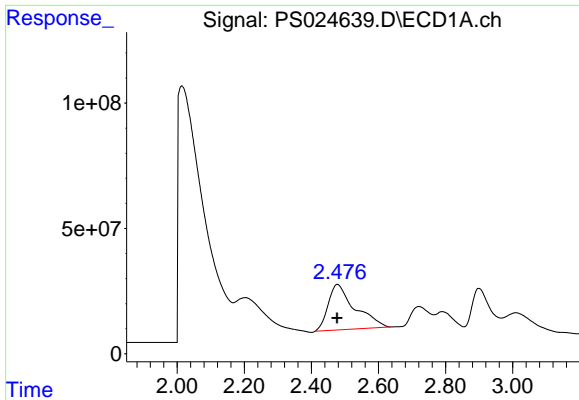
Data Path : Z:\pestpcbsrv\HPCHEM1\ECD\_S\Data\PS101723\  
 Data File : PS024639.D  
 Signal(s) : Signal #1: ECD1A.ch Signal #2: ECD2B.ch  
 Acq On : 17 Oct 2023 12:45  
 Operator : AR\AJ  
 Sample : 04887-02MS  
 Misc :  
 ALS Vial : 7 Sample Multiplier: 1

Instrument :  
 ECD\_S  
 ClientSampleId :

Integration File signal 1: autoint1.e  
 Integration File signal 2: autoint2.e  
 Quant Time: Oct 18 01:31:12 2023  
 Quant Method : Z:\pestpcbsrv\HPCHEM1\ECD\_S\Method\PS100323.M  
 Quant Title : 8080.M  
 QLast Update : Tue Oct 03 14:54:54 2023  
 Response via : Initial Calibration  
 Integrator: ChemStation

Volume Inj. : 2 µl  
 Signal #1 Phase : Rtx-CLPesticides Signal #2 Phase: Rtx-CLPesticides2  
 Signal #1 Info : 30M x 0.32mm x0.5 Signal #2 Info : 30M x 0.32mm x 0.25µm

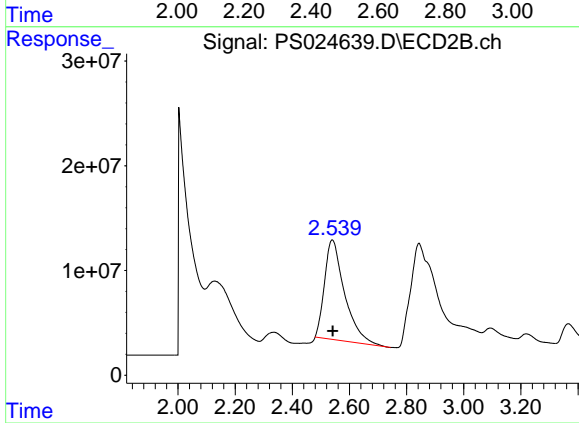




#1 Dalapon

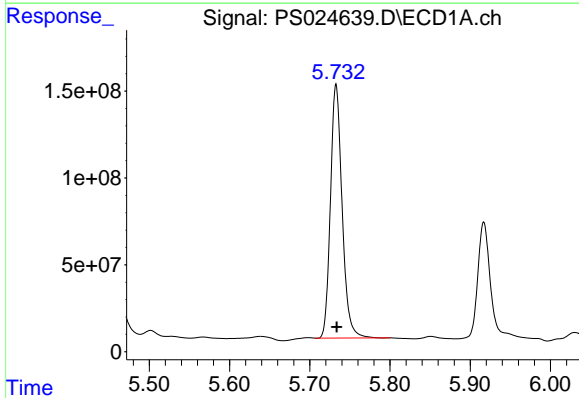
R.T.: 2.477 min  
 Delta R.T.: 0.000 min  
 Response: 1002030017  
 Conc: 405.59 ng/ml

Instrument :  
 ECD\_S  
 ClientSampleId :



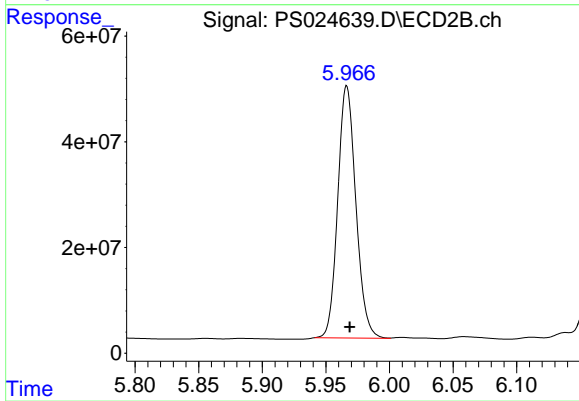
#1 Dalapon

R.T.: 2.540 min  
 Delta R.T.: -0.002 min  
 Response: 461909830  
 Conc: 412.74 ng/ml



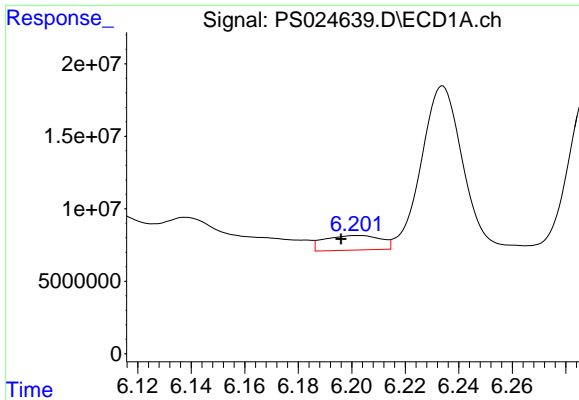
#2 3,5-DICHLOROBENZOIC ACID

R.T.: 5.733 min  
 Delta R.T.: 0.000 min  
 Response: 1474879026  
 Conc: 470.19 ng/ml



#2 3,5-DICHLOROBENZOIC ACID

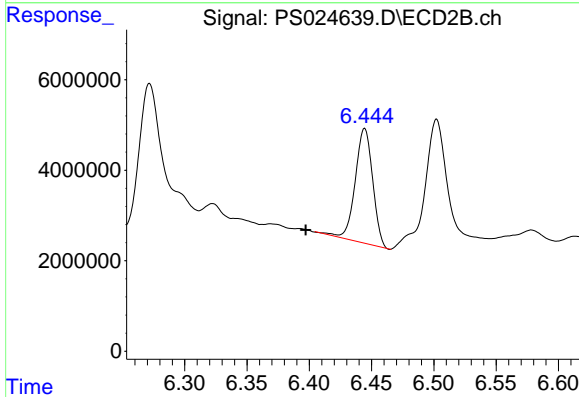
R.T.: 5.967 min  
 Delta R.T.: -0.002 min  
 Response: 473135506  
 Conc: 435.39 ng/ml



#3 4-Nitrophenol

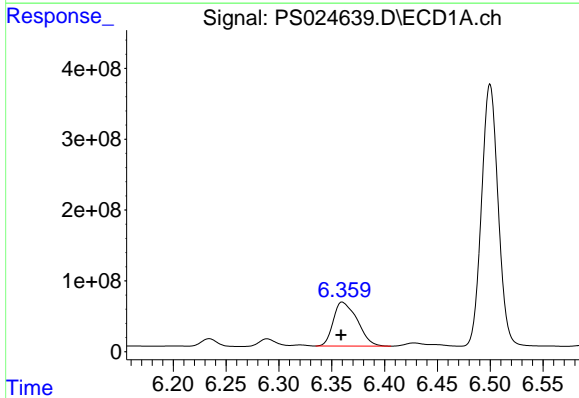
R.T.: 6.202 min  
 Delta R.T.: 0.006 min  
 Response: 14726098  
 Conc: 10.88 ng/ml

Instrument :  
 ECD\_S  
 ClientSampleId :



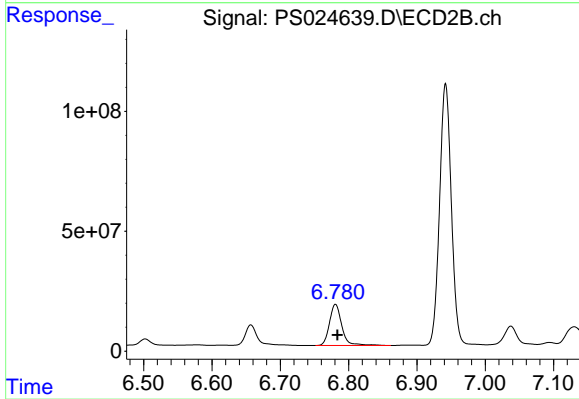
#3 4-Nitrophenol

R.T.: 6.444 min  
 Delta R.T.: 0.047 min  
 Response: 24931904  
 Conc: 54.66 ng/ml



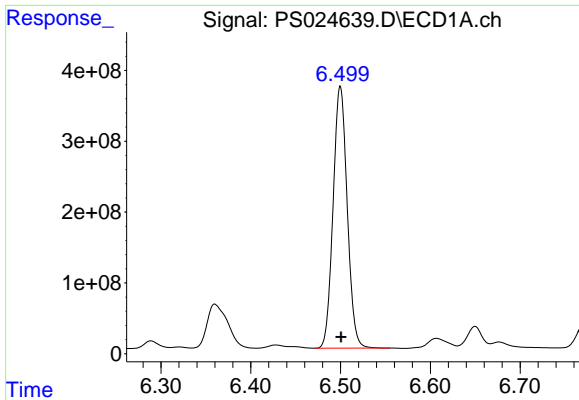
#4 2,4-DCAA

R.T.: 6.361 min  
 Delta R.T.: 0.002 min  
 Response: 974431377  
 Conc: 473.64 ng/ml



#4 2,4-DCAA

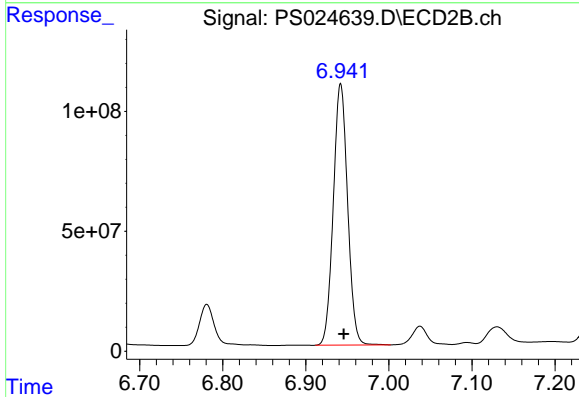
R.T.: 6.781 min  
 Delta R.T.: -0.003 min  
 Response: 215656020  
 Conc: 311.96 ng/ml



#5 DICAMBA

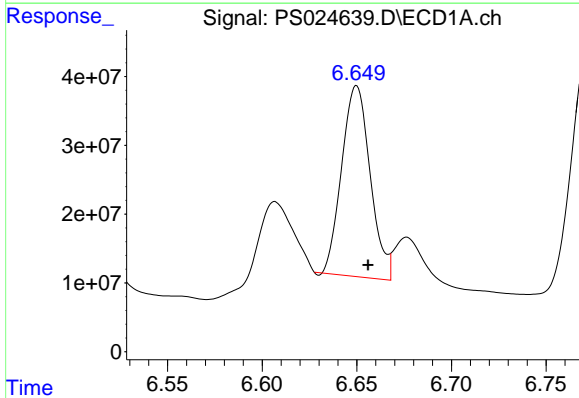
R.T.: 6.500 min  
 Delta R.T.: 0.000 min  
 Response: 4041690051  
 Conc: 450.55 ng/ml

Instrument :  
 ECD\_S  
 ClientSampleId :



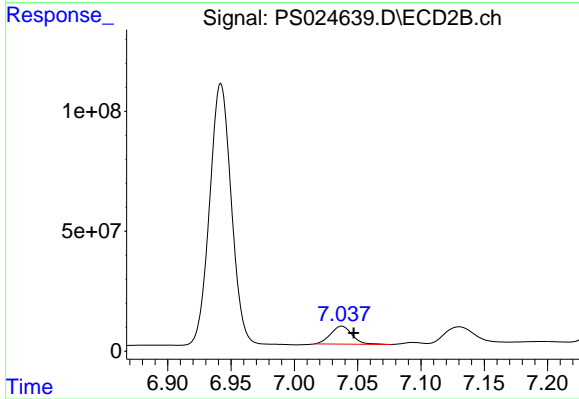
#5 DICAMBA

R.T.: 6.942 min  
 Delta R.T.: -0.004 min  
 Response: 1302096864  
 Conc: 439.70 ng/ml



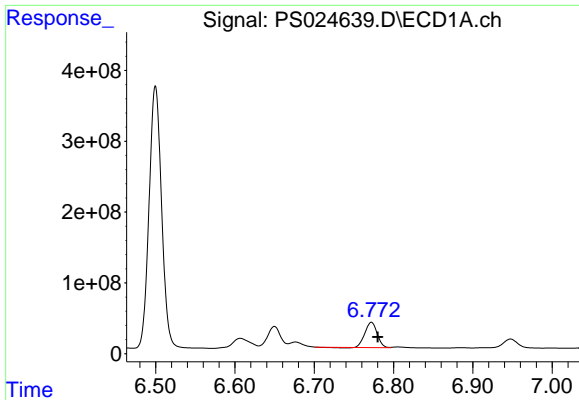
#6 MCP

R.T.: 6.650 min  
 Delta R.T.: -0.006 min  
 Response: 290765428  
 Conc: 45.90 ug/ml



#6 MCP

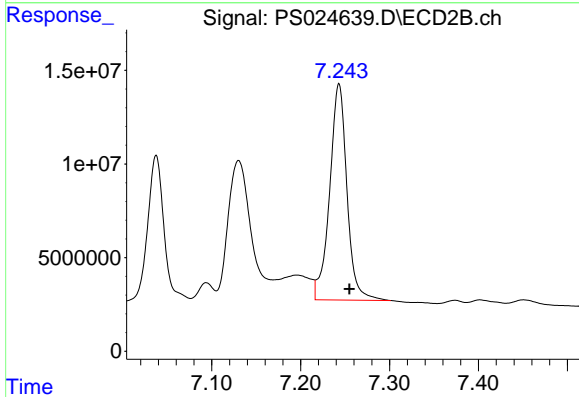
R.T.: 7.037 min  
 Delta R.T.: -0.009 min  
 Response: 88306670  
 Conc: 44.81 ug/ml



#7 MCPA

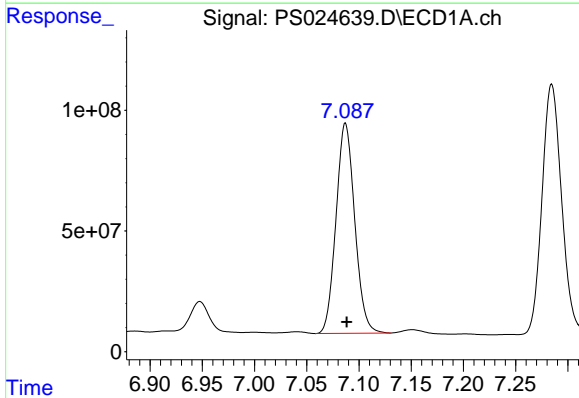
R.T.: 6.772 min  
 Delta R.T.: -0.008 min  
 Response: 379016351  
 Conc: 42.53 ug/ml

Instrument :  
 ECD\_S  
 ClientSampleId :



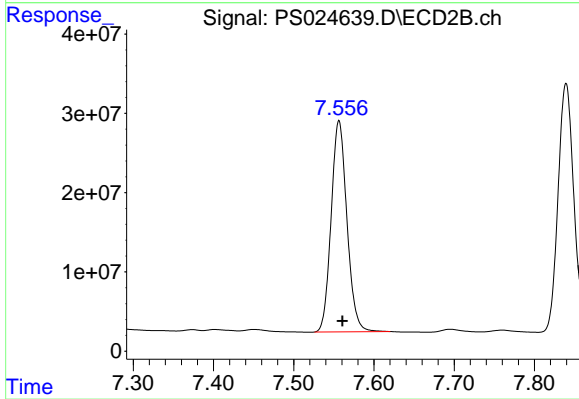
#7 MCPA

R.T.: 7.243 min  
 Delta R.T.: -0.012 min  
 Response: 155998476  
 Conc: 48.68 ug/ml



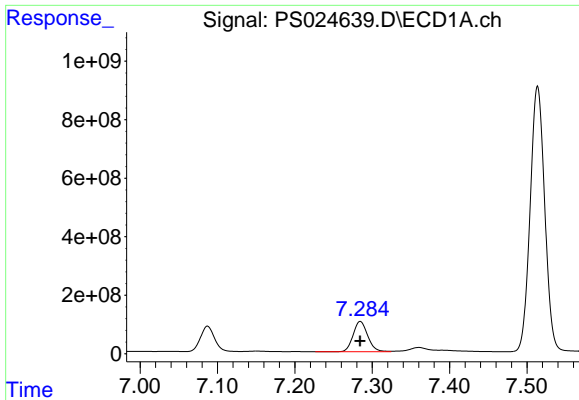
#8 DICHLORPROP

R.T.: 7.087 min  
 Delta R.T.: -0.001 min  
 Response: 1086365819  
 Conc: 462.13 ng/ml



#8 DICHLORPROP

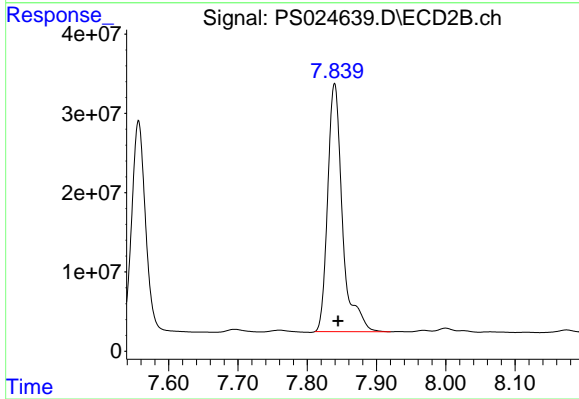
R.T.: 7.556 min  
 Delta R.T.: -0.004 min  
 Response: 364182436  
 Conc: 484.26 ng/ml



#9 2,4-D

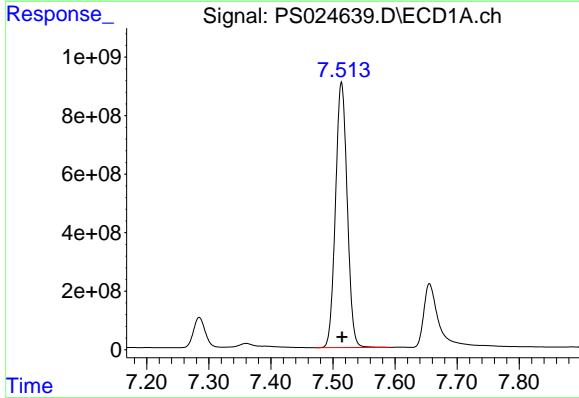
R.T.: 7.285 min  
 Delta R.T.: 0.000 min  
 Response: 1361414229  
 Conc: 492.73 ng/ml

Instrument :  
 ECD\_S  
 ClientSampleId :



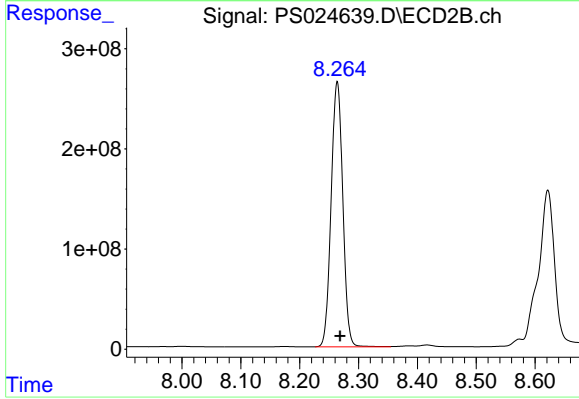
#9 2,4-D

R.T.: 7.839 min  
 Delta R.T.: -0.005 min  
 Response: 463926025  
 Conc: 504.02 ng/ml



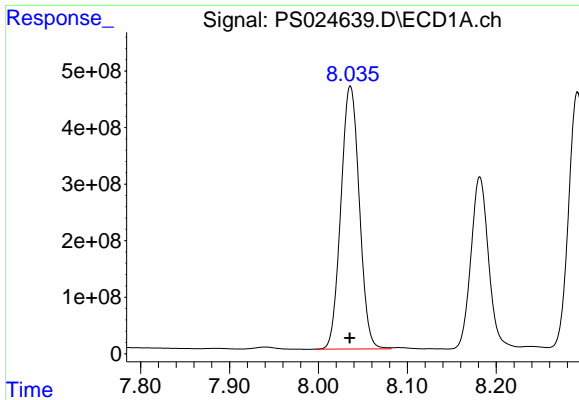
#10 Pentachlorophenol

R.T.: 7.514 min  
 Delta R.T.: 0.000 min  
 Response: 11873116287  
 Conc: 365.16 ng/ml



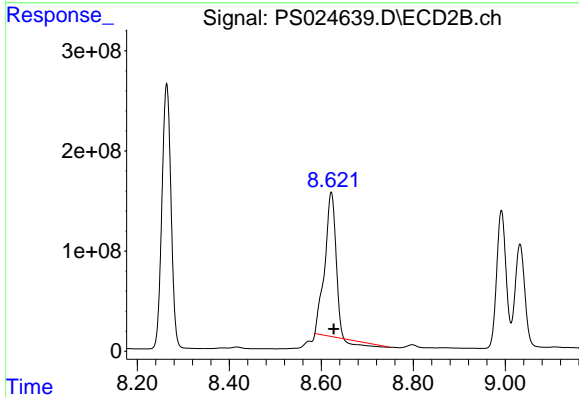
#10 Pentachlorophenol

R.T.: 8.264 min  
 Delta R.T.: -0.005 min  
 Response: 3643727115  
 Conc: 334.40 ng/ml

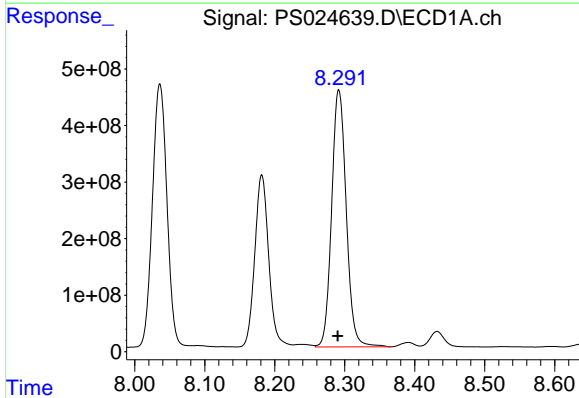


#11 2,4,5-TP (SILVEX)  
 R.T.: 8.036 min  
 Delta R.T.: 0.000 min  
 Response: 6700360472  
 Conc: 483.60 ng/ml

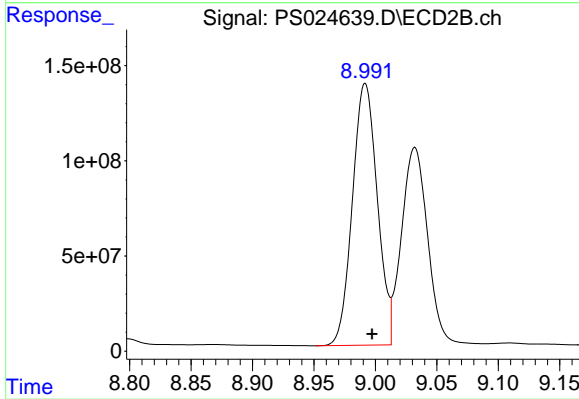
Instrument :  
 ECD\_S  
 ClientSampleId :



#11 2,4,5-TP (SILVEX)  
 R.T.: 8.622 min  
 Delta R.T.: -0.005 min  
 Response: 2279252589  
 Conc: 537.42 ng/ml

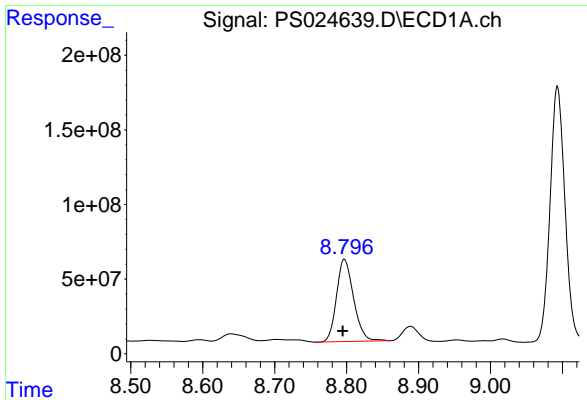


#12 2,4,5-T  
 R.T.: 8.292 min  
 Delta R.T.: 0.002 min  
 Response: 6575847997  
 Conc: 503.31 ng/ml



#12 2,4,5-T  
 R.T.: 8.992 min  
 Delta R.T.: -0.005 min  
 Response: 1936963590  
 Conc: 469.73 ng/ml

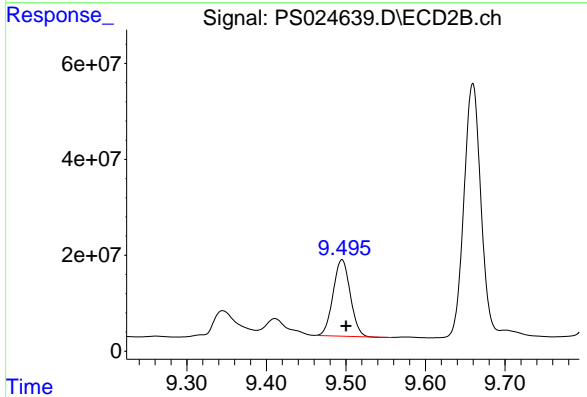




#13 2,4-DB

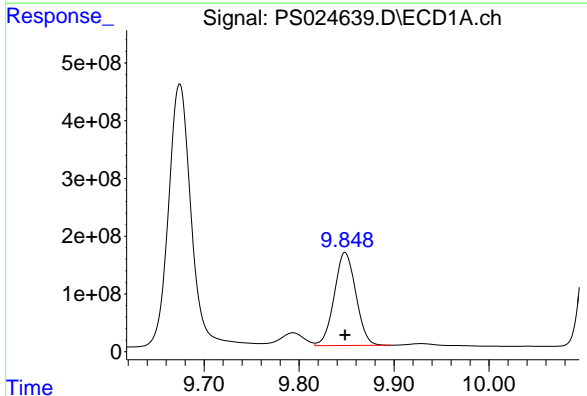
R.T.: 8.797 min  
 Delta R.T.: 0.002 min  
 Response: 910606940  
 Conc: 445.73 ng/ml

Instrument :  
 ECD\_S  
 ClientSampleId :



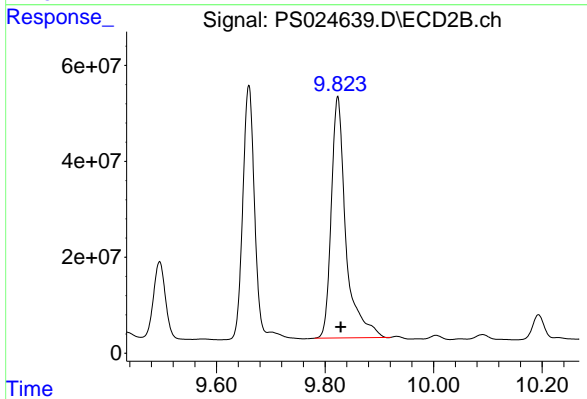
#13 2,4-DB

R.T.: 9.495 min  
 Delta R.T.: -0.005 min  
 Response: 237927303  
 Conc: 466.91 ng/ml



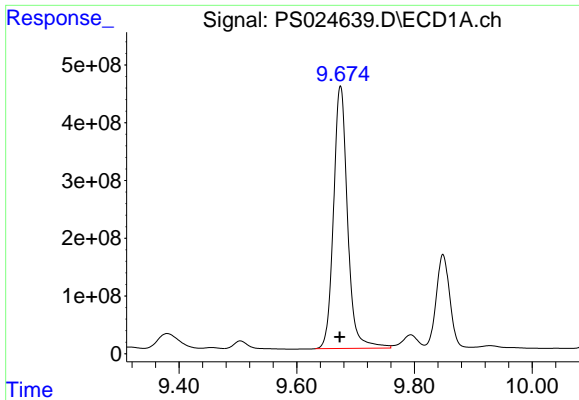
#14 DINOSEB

R.T.: 9.848 min  
 Delta R.T.: 0.000 min  
 Response: 2542690520  
 Conc: 248.73 ng/ml



#14 DINOSEB

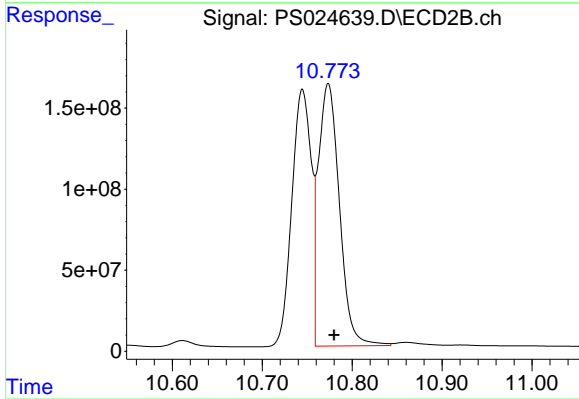
R.T.: 9.823 min  
 Delta R.T.: -0.005 min  
 Response: 941459617  
 Conc: 303.59 ng/ml



#15 Picloram

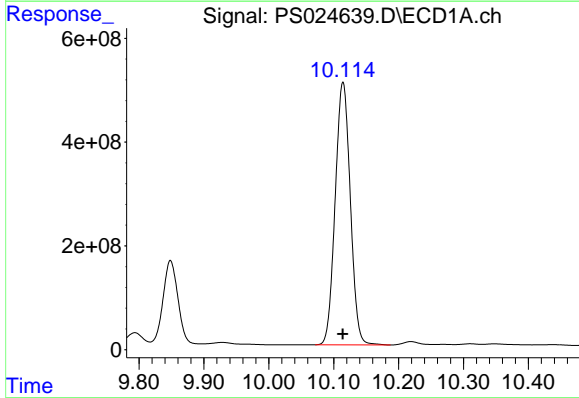
R.T.: 9.674 min  
 Delta R.T.: 0.001 min  
 Response: 7516302802  
 Conc: 431.07 ng/ml

Instrument :  
 ECD\_S  
 ClientSampleId :



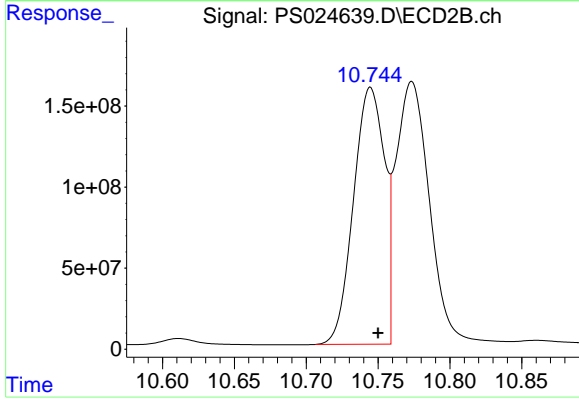
#15 Picloram

R.T.: 10.773 min  
 Delta R.T.: -0.007 min  
 Response: 2632340760  
 Conc: 423.59 ng/ml



#16 DCPA

R.T.: 10.114 min  
 Delta R.T.: 0.000 min  
 Response: 8190903485  
 Conc: 481.17 ng/ml



#16 DCPA

R.T.: 10.745 min  
 Delta R.T.: -0.005 min  
 Response: 2378891915  
 Conc: 455.95 ng/ml