

Data Path : Z:\pestpcbsrv\HPCHEM1\ECD_S\Data\PS101723\
 Data File : PS024645.D
 Signal(s) : Signal #1: ECD1A.ch Signal #2: ECD2B.ch
 Acq On : 17 Oct 2023 16:08
 Operator : AR\AJ
 Sample : HSTDCCC750
 Misc :
 ALS Vial : 3 Sample Multiplier: 1

Instrument :
 ECD_S
 ClientSampleId :

Integration File signal 1: autoint1.e
 Integration File signal 2: autoint2.e
 Quant Time: Oct 18 01:35:16 2023
 Quant Method : Z:\pestpcbsrv\HPCHEM1\ECD_S\Method\PS100323.M
 Quant Title : 8080.M
 QLast Update : Tue Oct 03 14:54:54 2023
 Response via : Initial Calibration
 Integrator: ChemStation

Volume Inj. : 2 µl
 Signal #1 Phase : Rtx-CLPesticides Signal #2 Phase: Rtx-CLPesticides2
 Signal #1 Info : 30M x 0.32mm x0.5 Signal #2 Info : 30M x 0.32mm x 0.25µm

	Compound	RT#1	RT#2	Resp#1	Resp#2	ng/ml	ng/ml

System Monitoring Compounds							
4) S	2,4-DCAA	6.359	6.780	1496.9E6	496.6E6	727.591	718.372
Target Compounds							
1) T	Dalapon	2.478	2.539	1636.6E6	704.3E6	662.438	629.347
2) T	3,5-DICHL...	5.733	5.966	2119.8E6	736.5E6	675.796	677.736
3) T	4-Nitroph...	6.196	6.394	896.7E6	299.8E6	662.413	657.306
5) T	DICAMBA	6.500	6.942	6273.1E6	2045.9E6	699.288	690.875
6) T	MCP P	6.651	7.039	454.6E6	133.4E6	71.763	67.717
7) T	MCPA	6.774	7.245	623.4E6	213.9E6	69.950	66.749
8) T	DICHLORPROP	7.087	7.556	1596.6E6	505.0E6	679.165	671.460
9) T	2,4-D	7.285	7.839	1881.6E6	621.4E6	680.988	675.046
10) T	Pentachlo...	7.514	8.263	23290.7E6	7579.3E6	716.309	695.589
11) T	2,4,5-TP ...	8.036	8.622	9683.1E6	2926.0E6	698.887	689.906
12) T	2,4,5-T	8.291	8.992	9114.3E6	2834.4E6	697.599	687.381
13) T	2,4-DB	8.795	9.495	1525.7E6	358.5E6	746.815	703.450
14) T	DINOSEB	9.849	9.823	7007.8E6	2096.7E6	685.524	676.117
15) T	Picloram	9.675	10.775	11385.4E6	3994.3E6	652.972	642.751
16) T	DCPA	10.115	10.745	11926.2E6	3637.0E6	700.601	697.088

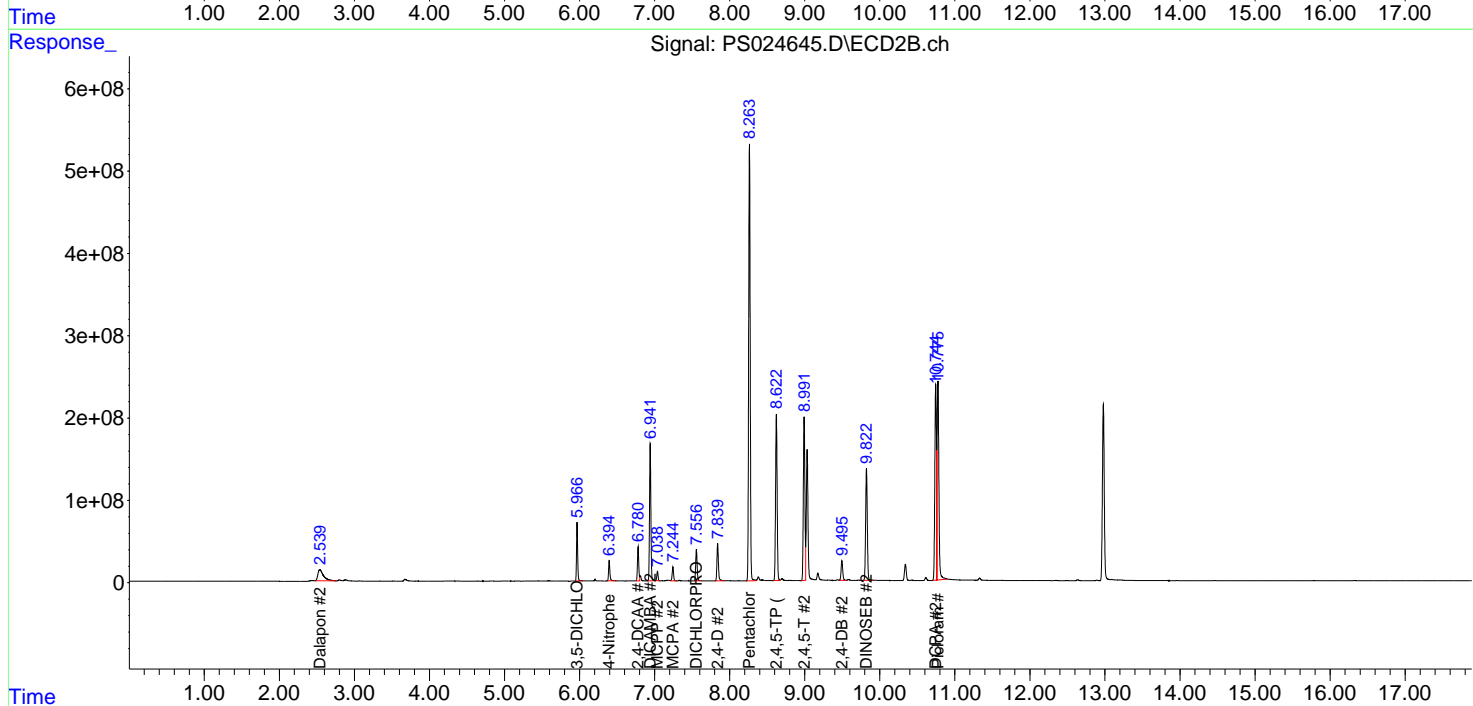
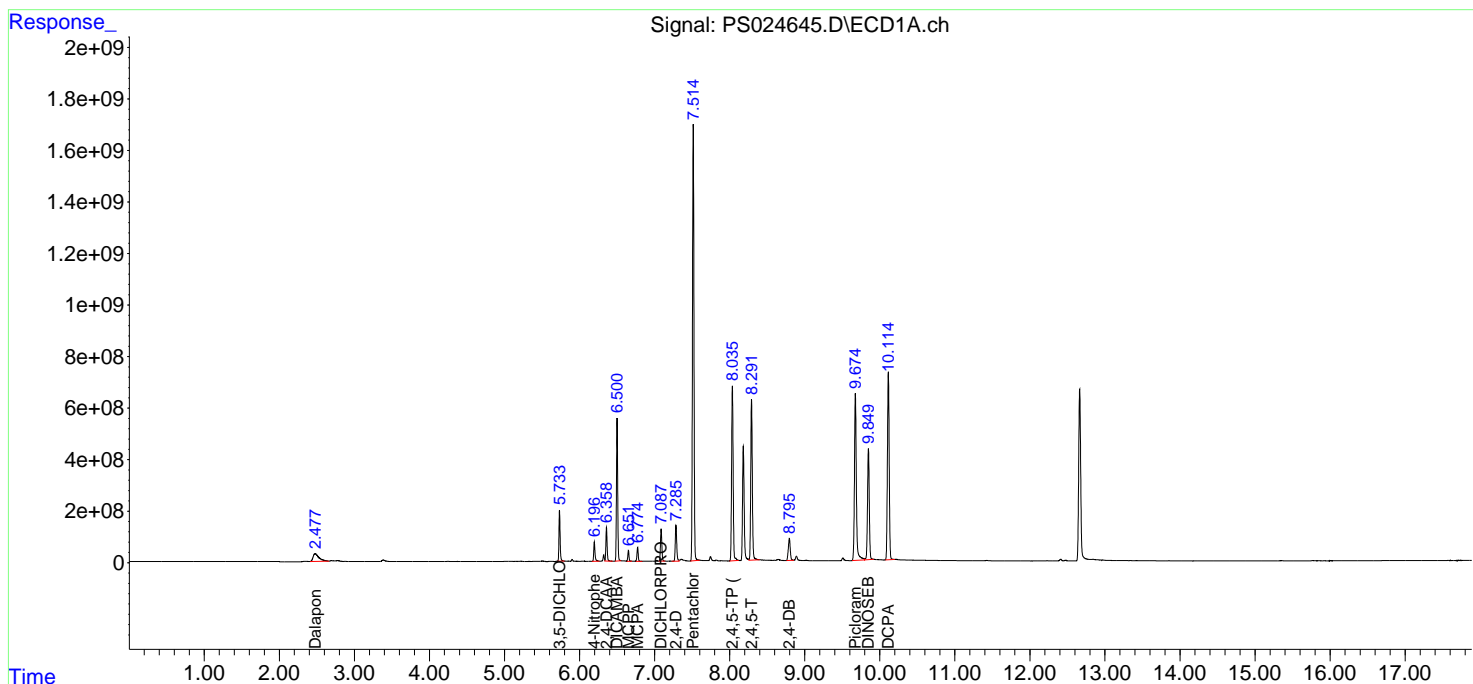
(f)=RT Delta > 1/2 Window (#)=Amounts differ by > 25% (m)=manual int.

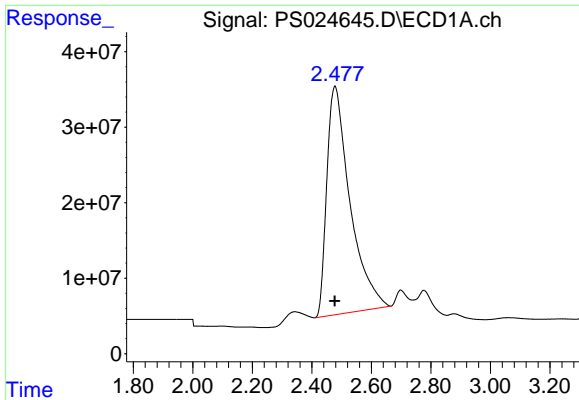
Data Path : Z:\pestpcbsrv\HPCHEM1\ECD_S\Data\PS101723\
 Data File : PS024645.D
 Signal(s) : Signal #1: ECD1A.ch Signal #2: ECD2B.ch
 Acq On : 17 Oct 2023 16:08
 Operator : AR\AJ
 Sample : HSTDCCC750
 Misc :
 ALS Vial : 3 Sample Multiplier: 1

Instrument :
 ECD_S
 ClientSampleId :

Integration File signal 1: autoint1.e
 Integration File signal 2: autoint2.e
 Quant Time: Oct 18 01:35:16 2023
 Quant Method : Z:\pestpcbsrv\HPCHEM1\ECD_S\Method\PS100323.M
 Quant Title : 8080.M
 QLast Update : Tue Oct 03 14:54:54 2023
 Response via : Initial Calibration
 Integrator: ChemStation

Volume Inj. : 2 µl
 Signal #1 Phase : Rtx-CLPesticides Signal #2 Phase: Rtx-CLPesticides2
 Signal #1 Info : 30M x 0.32mm x0.5 Signal #2 Info : 30M x 0.32mm x 0.25µm

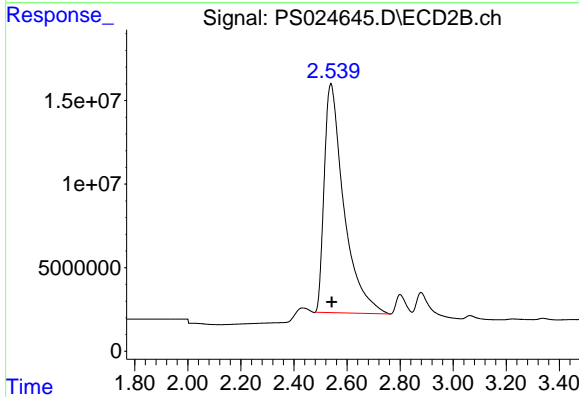




#1 Dalapon

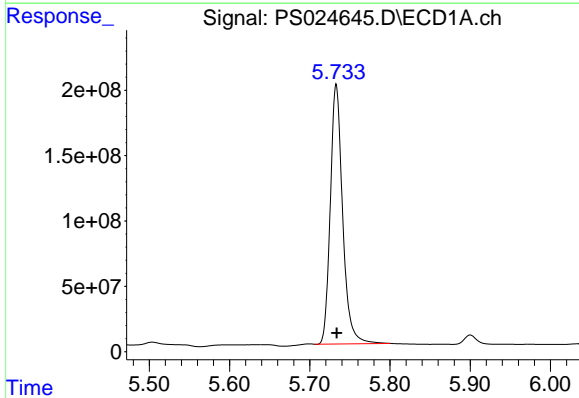
R.T.: 2.478 min
 Delta R.T.: 0.000 min
 Response: 1636588864
 Conc: 662.44 ng/ml

Instrument :
 ECD_S
 ClientSampleId :



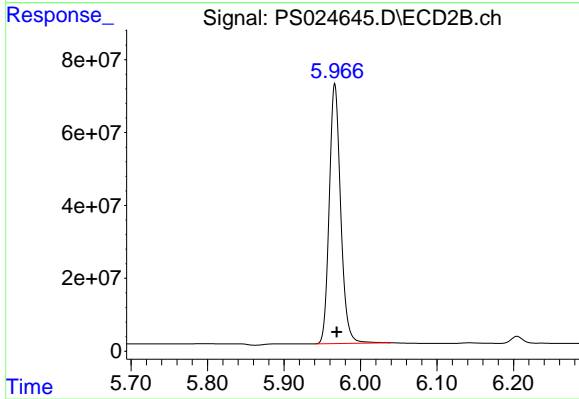
#1 Dalapon

R.T.: 2.539 min
 Delta R.T.: -0.003 min
 Response: 704323685
 Conc: 629.35 ng/ml



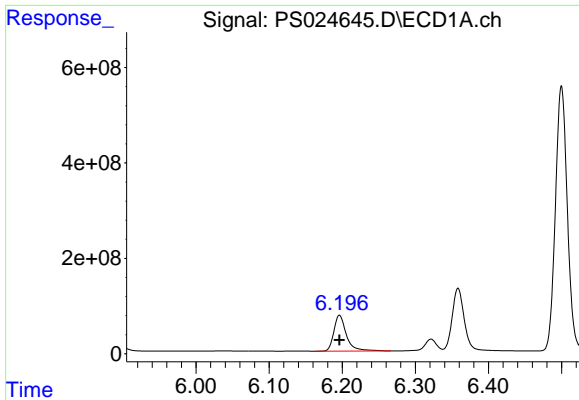
#2 3,5-DICHLOROBENZOIC ACID

R.T.: 5.733 min
 Delta R.T.: 0.000 min
 Response: 2119824058
 Conc: 675.80 ng/ml



#2 3,5-DICHLOROBENZOIC ACID

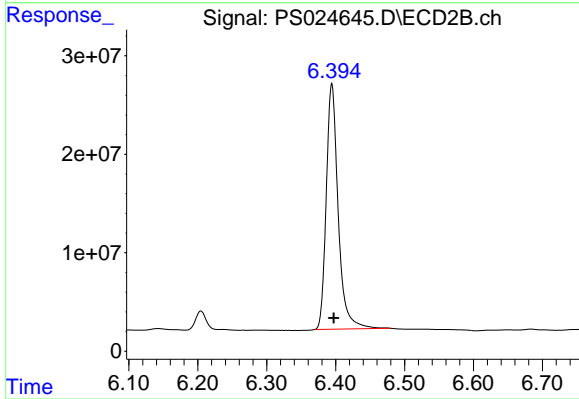
R.T.: 5.966 min
 Delta R.T.: -0.002 min
 Response: 736495785
 Conc: 677.74 ng/ml



#3 4-Nitrophenol

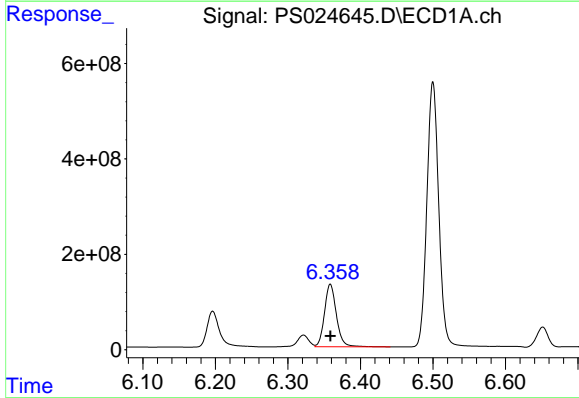
R.T.: 6.196 min
 Delta R.T.: 0.000 min
 Response: 896691956
 Conc: 662.41 ng/ml

Instrument :
 ECD_S
 ClientSampleId :



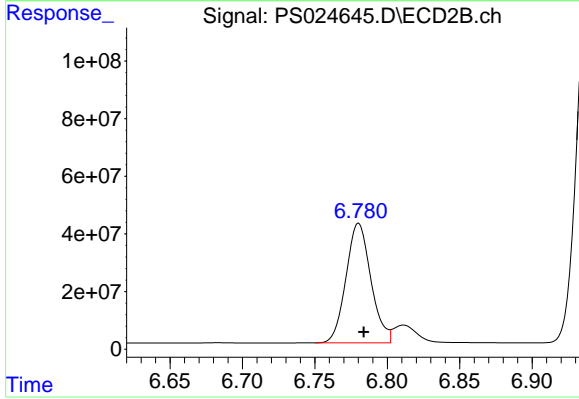
#3 4-Nitrophenol

R.T.: 6.394 min
 Delta R.T.: -0.003 min
 Response: 299821708
 Conc: 657.31 ng/ml



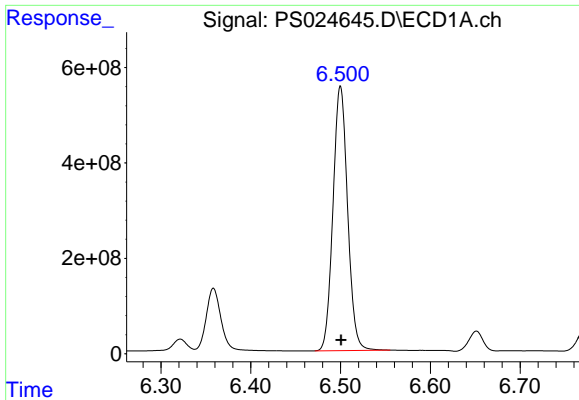
#4 2,4-DCAA

R.T.: 6.359 min
 Delta R.T.: 0.000 min
 Response: 1496894713
 Conc: 727.59 ng/ml



#4 2,4-DCAA

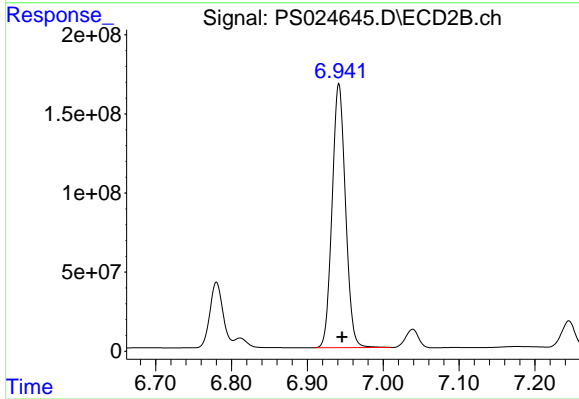
R.T.: 6.780 min
 Delta R.T.: -0.003 min
 Response: 496603463
 Conc: 718.37 ng/ml



#5 DICAMBA

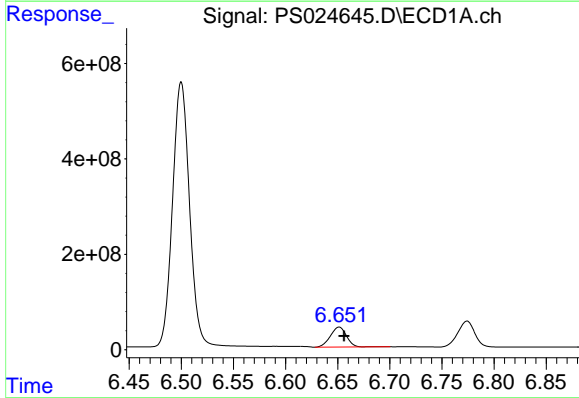
R.T.: 6.500 min
 Delta R.T.: 0.000 min
 Response: 6273053416
 Conc: 699.29 ng/ml

Instrument :
 ECD_S
 ClientSampleId :



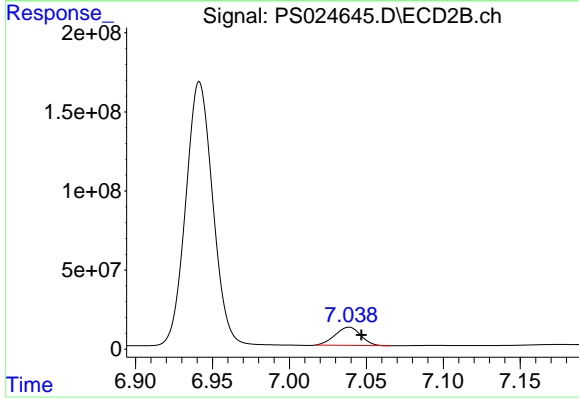
#5 DICAMBA

R.T.: 6.942 min
 Delta R.T.: -0.004 min
 Response: 2045888346
 Conc: 690.87 ng/ml



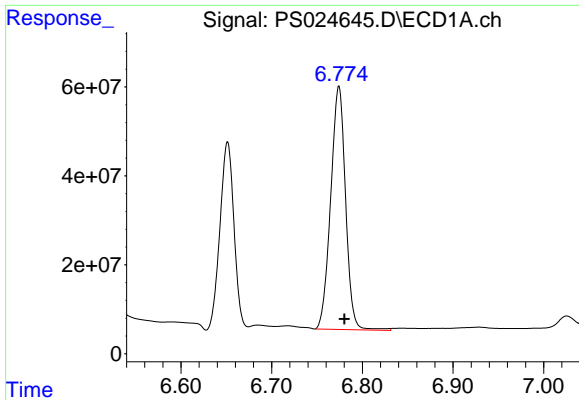
#6 MCP

R.T.: 6.651 min
 Delta R.T.: -0.005 min
 Response: 454647859
 Conc: 71.76 ug/ml



#6 MCP

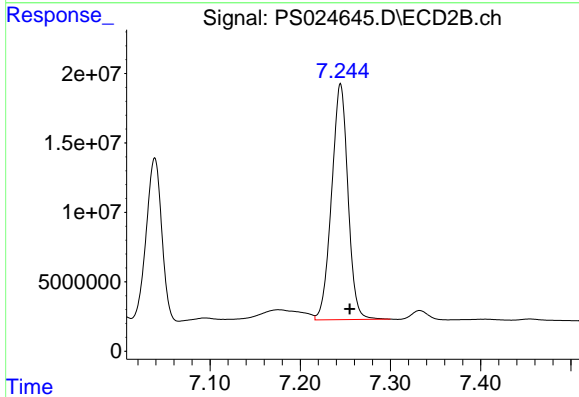
R.T.: 7.039 min
 Delta R.T.: -0.008 min
 Response: 133444039
 Conc: 67.72 ug/ml



#7 MCPA

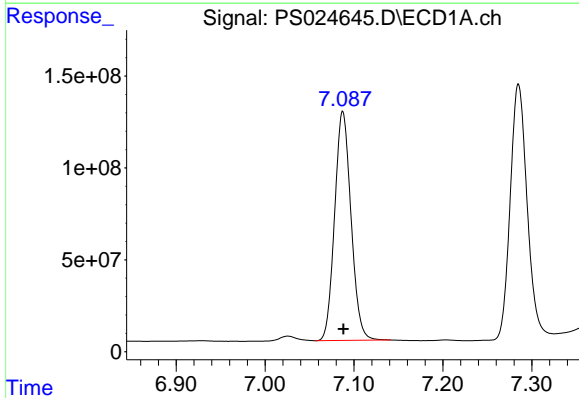
R.T.: 6.774 min
 Delta R.T.: -0.006 min
 Response: 623432128
 Conc: 69.95 ug/ml

Instrument :
 ECD_S
 ClientSampleId :



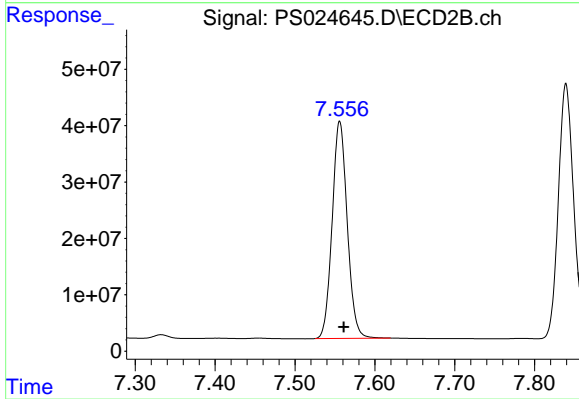
#7 MCPA

R.T.: 7.245 min
 Delta R.T.: -0.010 min
 Response: 213884927
 Conc: 66.75 ug/ml



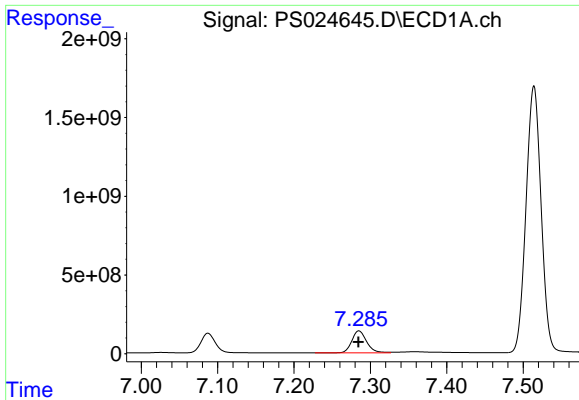
#8 DICHLORPROP

R.T.: 7.087 min
 Delta R.T.: 0.000 min
 Response: 1596567209
 Conc: 679.16 ng/ml



#8 DICHLORPROP

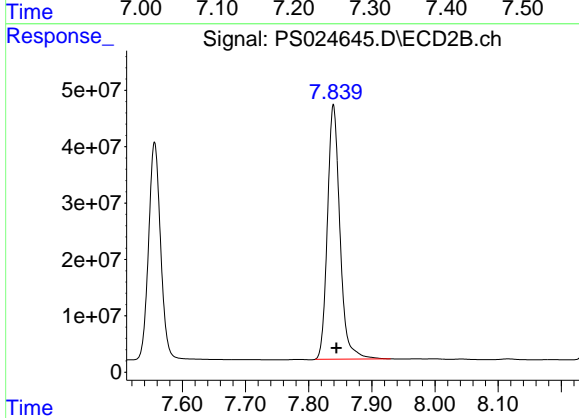
R.T.: 7.556 min
 Delta R.T.: -0.005 min
 Response: 504965223
 Conc: 671.46 ng/ml



#9 2,4-D

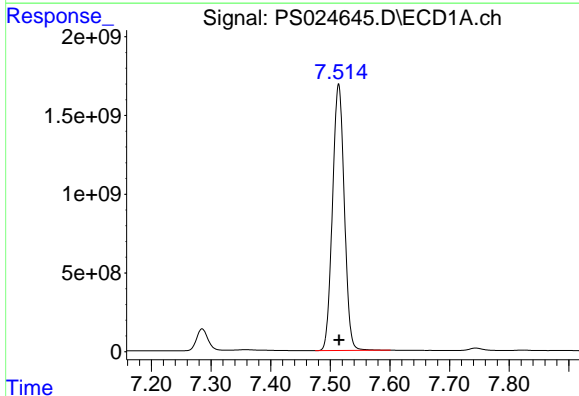
R.T.: 7.285 min
 Delta R.T.: 0.000 min
 Response: 1881565429
 Conc: 680.99 ng/ml

Instrument :
 ECD_S
 ClientSampleId :



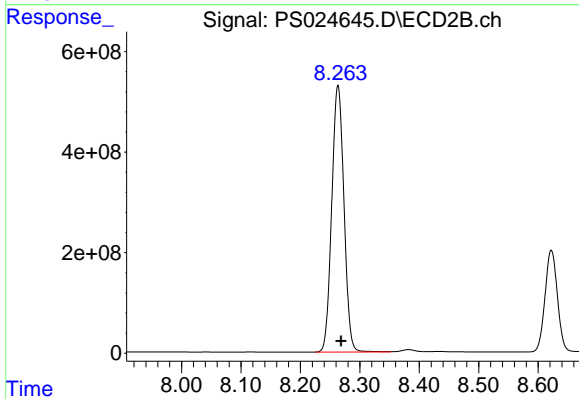
#9 2,4-D

R.T.: 7.839 min
 Delta R.T.: -0.005 min
 Response: 621352255
 Conc: 675.05 ng/ml



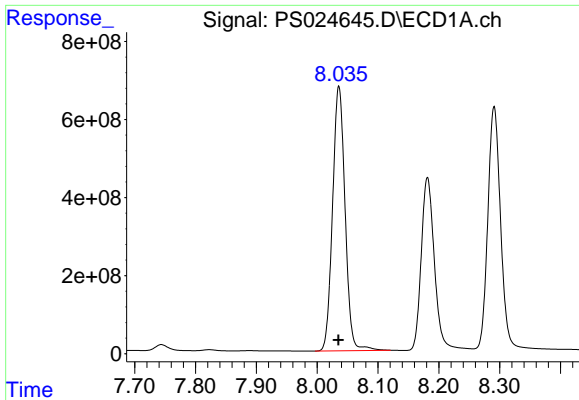
#10 Pentachlorophenol

R.T.: 7.514 min
 Delta R.T.: 0.000 min
 Response: 23290684308
 Conc: 716.31 ng/ml



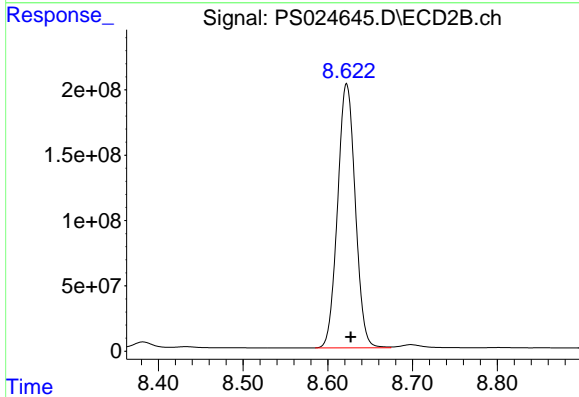
#10 Pentachlorophenol

R.T.: 8.263 min
 Delta R.T.: -0.005 min
 Response: 7579287436
 Conc: 695.59 ng/ml

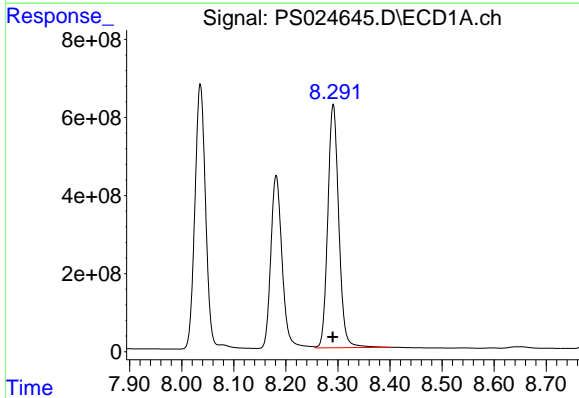


#11 2,4,5-TP (SILVEX)
 R.T.: 8.036 min
 Delta R.T.: 0.000 min
 Response: 9683123313
 Conc: 698.89 ng/ml

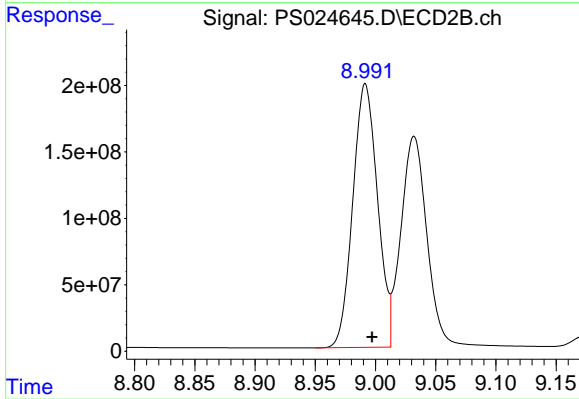
Instrument :
 ECD_S
 ClientSampleId :



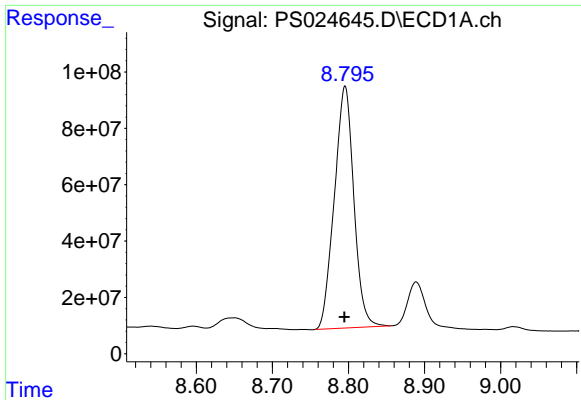
#11 2,4,5-TP (SILVEX)
 R.T.: 8.622 min
 Delta R.T.: -0.005 min
 Response: 2925955223
 Conc: 689.91 ng/ml



#12 2,4,5-T
 R.T.: 8.291 min
 Delta R.T.: 0.000 min
 Response: 9114292690
 Conc: 697.60 ng/ml



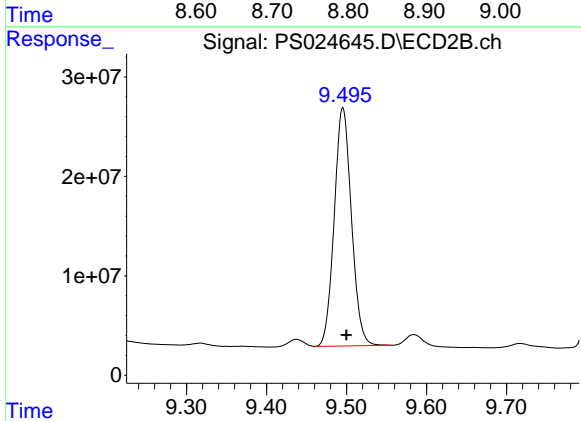
#12 2,4,5-T
 R.T.: 8.992 min
 Delta R.T.: -0.006 min
 Response: 2834433006
 Conc: 687.38 ng/ml



#13 2,4-DB

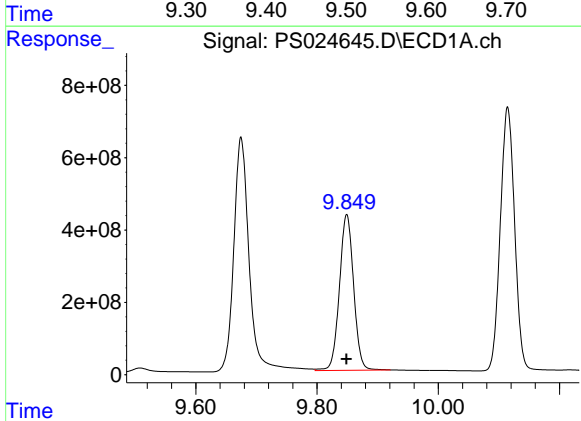
R.T.: 8.795 min
 Delta R.T.: 0.000 min
 Response: 1525703112
 Conc: 746.81 ng/ml

Instrument :
 ECD_S
 ClientSampleId :



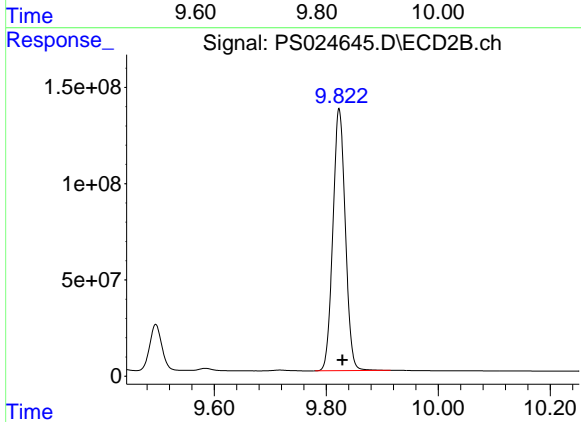
#13 2,4-DB

R.T.: 9.495 min
 Delta R.T.: -0.005 min
 Response: 358464645
 Conc: 703.45 ng/ml



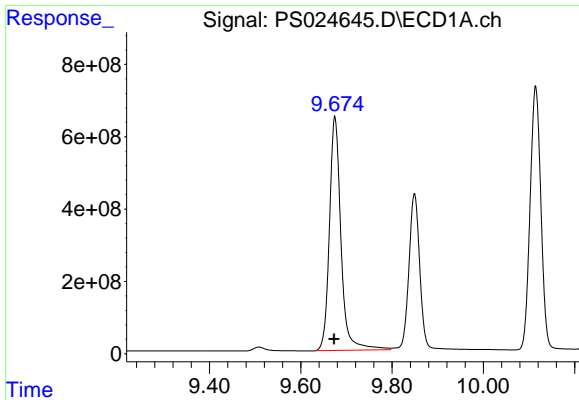
#14 DINOSEB

R.T.: 9.849 min
 Delta R.T.: 0.000 min
 Response: 7007804806
 Conc: 685.52 ng/ml



#14 DINOSEB

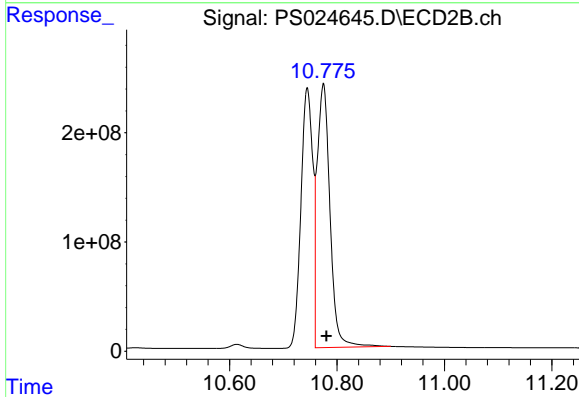
R.T.: 9.823 min
 Delta R.T.: -0.006 min
 Response: 2096666196
 Conc: 676.12 ng/ml



#15 Picloram

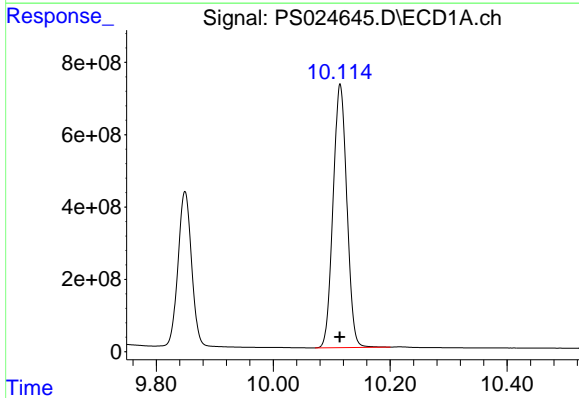
R.T.: 9.675 min
 Delta R.T.: 0.002 min
 Response: 11385432456
 Conc: 652.97 ng/ml

Instrument :
 ECD_S
 ClientSampleId :



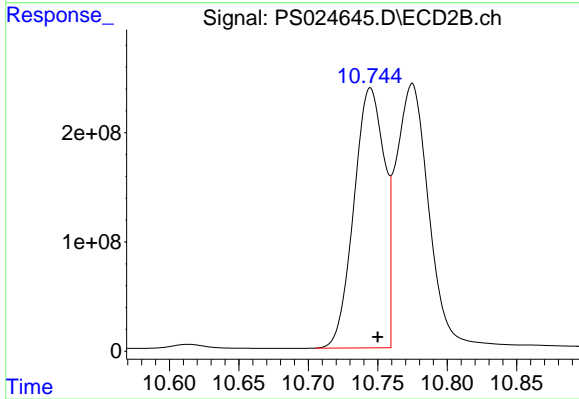
#15 Picloram

R.T.: 10.775 min
 Delta R.T.: -0.005 min
 Response: 3994297032
 Conc: 642.75 ng/ml



#16 DCPA

R.T.: 10.115 min
 Delta R.T.: 0.000 min
 Response: 11926159077
 Conc: 700.60 ng/ml



#16 DCPA

R.T.: 10.745 min
 Delta R.T.: -0.005 min
 Response: 3637015056
 Conc: 697.09 ng/ml