

Data Path : Z:\pestpcbsrv\HPCHEM1\ECD_S\Data\PS101723\
 Data File : PS024651.D
 Signal(s) : Signal #1: ECD1A.ch Signal #2: ECD2B.ch
 Acq On : 17 Oct 2023 18:37
 Operator : AR\AJ
 Sample : 04858-04MSD
 Misc :
 ALS Vial : 16 Sample Multiplier: 1

Instrument :
 ECD_S
 ClientSampleId :

Integration File signal 1: autoint1.e
 Integration File signal 2: autoint2.e
 Quant Time: Oct 18 01:38:13 2023
 Quant Method : Z:\pestpcbsrv\HPCHEM1\ECD_S\Method\PS100323.M
 Quant Title : 8080.M
 QLast Update : Tue Oct 03 14:54:54 2023
 Response via : Initial Calibration
 Integrator: ChemStation

Volume Inj. : 2 µl
 Signal #1 Phase : Rtx-CLPesticides Signal #2 Phase: Rtx-CLPesticides2
 Signal #1 Info : 30M x 0.32mm x0.5 Signal #2 Info : 30M x 0.32mm x 0.25µm

	Compound	RT#1	RT#2	Resp#1	Resp#2	ng/ml	ng/ml

System Monitoring Compounds							
4) S	2,4-DCAA	6.358	6.779	718.4E6	218.9E6	349.197	316.603
Target Compounds							
2) T	3,5-DICHL...	5.733	5.966	928.5E6	292.1E6	296.004	268.827
3) T	4-Nitroph...	6.175	6.436	52514788	7252794	38.794	15.900 #
5) T	DICAMBA	6.499	6.940	2683.9E6	827.8E6	299.191	279.542
6) T	MCPD	6.648	7.034	162.7E6	43492819	25.684	22.071
7) T	MCPA	6.770	7.241	308.0E6	89046279	34.554	27.790
8) T	DICHLORPROP	7.087	7.556	684.4E6	225.6E6	291.137	300.017
9) T	2,4-D	7.284	7.838	875.0E6	283.1E6	316.702	307.581
10) T	Pentachlo...	7.512	8.262	5251.5E6	1553.3E6	161.510	142.557
11) T	2,4,5-TP ...	8.034	8.621	3203.9E6	941.2E6	231.245	221.933
12) T	2,4,5-T	8.290	8.990	3651.6E6	1076.2E6	279.490	260.985
13) T	2,4-DB	8.796	9.494	477.9E6	129.2E6	233.928	253.585
14) T	DINOSEB	9.844	9.799	50293523	40139537	4.920	12.944 #
15) T	Picloram	9.674	10.773	4965.4E6	1684.3E6	284.775	271.039
16) T	DCPA	10.113	10.744	6173.5E6	1708.7E6	362.662	327.490

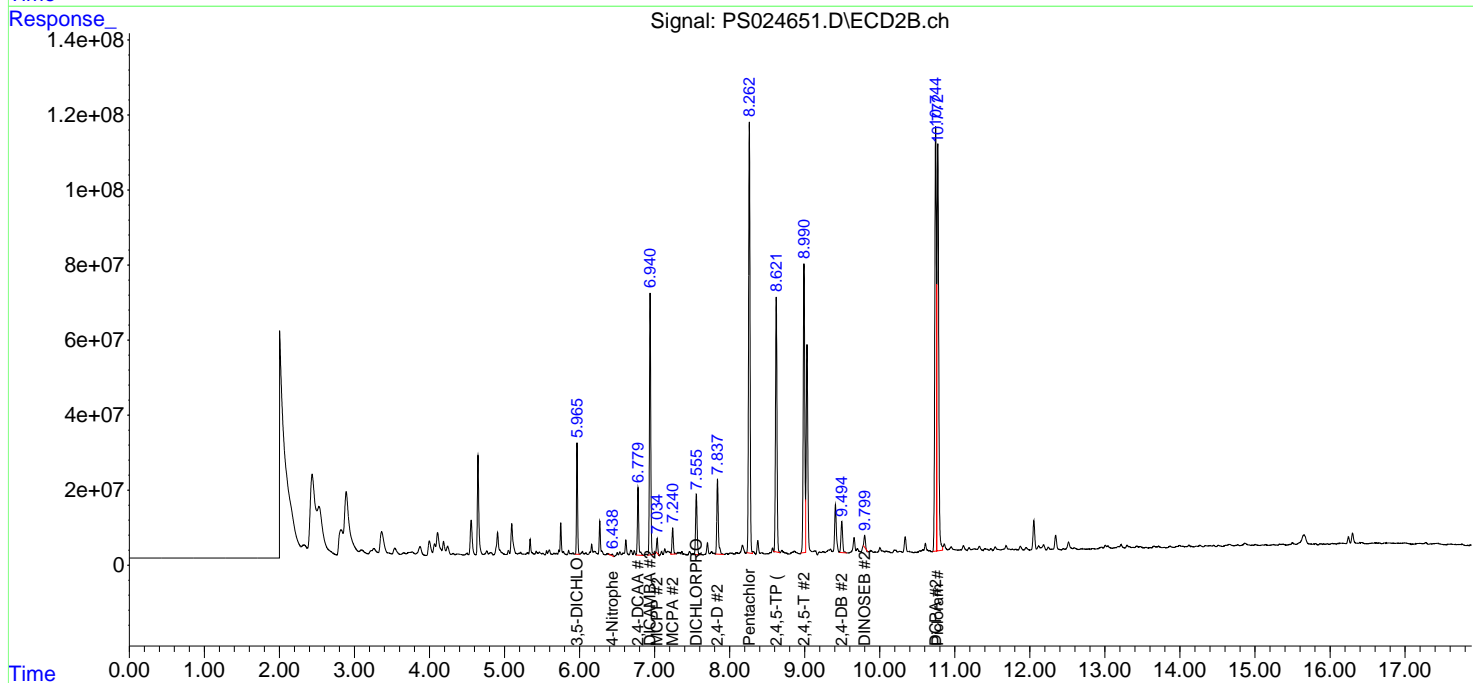
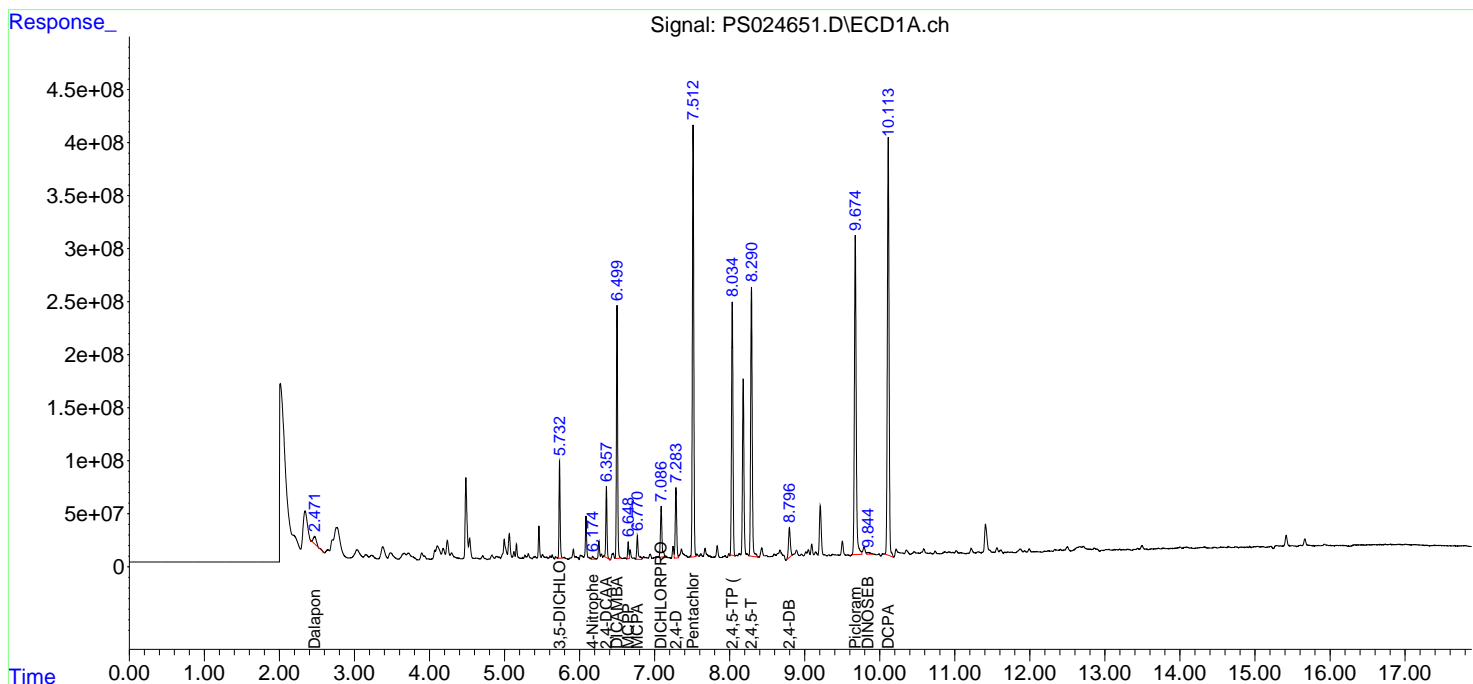
(f)=RT Delta > 1/2 Window (#)=Amounts differ by > 25% (m)=manual int.

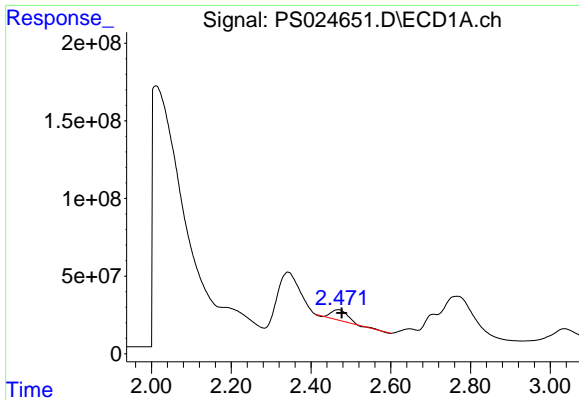
Data Path : Z:\pestpcbsrv\HPCHEM1\ECD_S\Data\PS101723\
 Data File : PS024651.D
 Signal(s) : Signal #1: ECD1A.ch Signal #2: ECD2B.ch
 Acq On : 17 Oct 2023 18:37
 Operator : AR\AJ
 Sample : 04858-04MSD
 Misc :
 ALS Vial : 16 Sample Multiplier: 1

Instrument :
 ECD_S
 ClientSampleId :

Integration File signal 1: autoint1.e
 Integration File signal 2: autoint2.e
 Quant Time: Oct 18 01:38:13 2023
 Quant Method : Z:\pestpcbsrv\HPCHEM1\ECD_S\Method\PS100323.M
 Quant Title : 8080.M
 QLast Update : Tue Oct 03 14:54:54 2023
 Response via : Initial Calibration
 Integrator: ChemStation

Volume Inj. : 2 µl
 Signal #1 Phase : Rtx-CLPesticides Signal #2 Phase: Rtx-CLPesticides2
 Signal #1 Info : 30M x 0.32mm x 0.5 Signal #2 Info : 30M x 0.32mm x 0.25µm

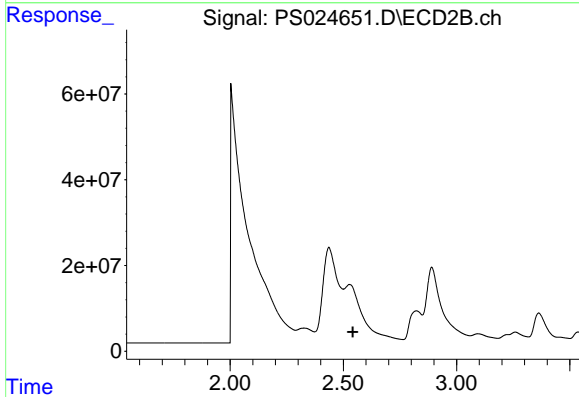




#1 Dalapon

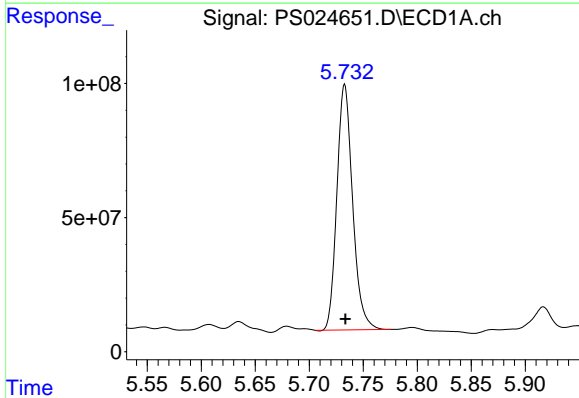
R.T.: 2.468 min
 Delta R.T.: -0.009 min
 Response: 193135495
 Conc: 78.17 ng/ml

Instrument :
 ECD_S
 ClientSampleId :



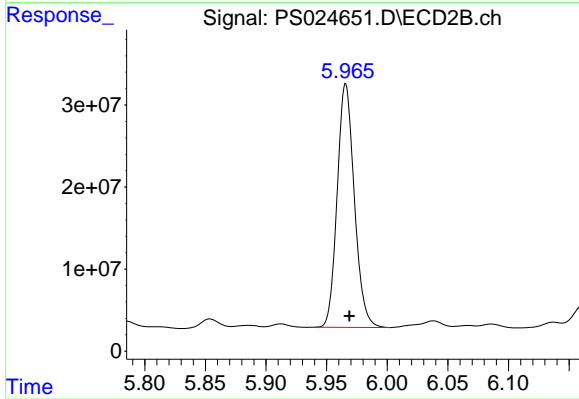
#1 Dalapon

R.T.: 2.526 min
 Delta R.T.: -0.016 min
 Response: -231518482
 Conc: N.D.



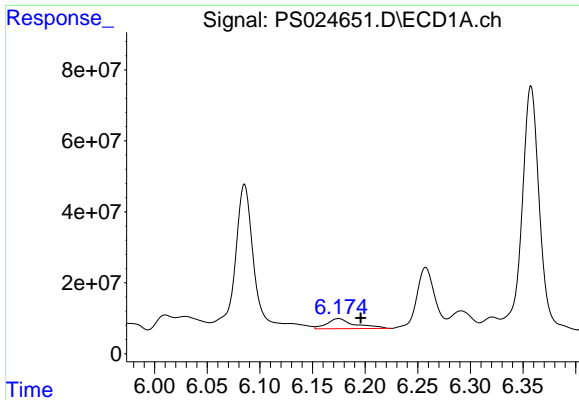
#2 3,5-DICHLOROBENZOIC ACID

R.T.: 5.733 min
 Delta R.T.: 0.000 min
 Response: 928501103
 Conc: 296.00 ng/ml



#2 3,5-DICHLOROBENZOIC ACID

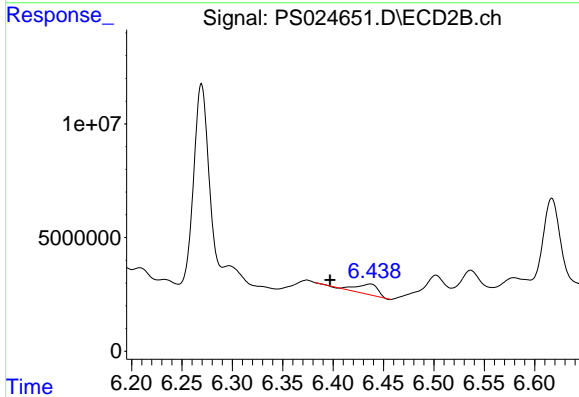
R.T.: 5.966 min
 Delta R.T.: -0.003 min
 Response: 292134384
 Conc: 268.83 ng/ml



#3 4-Nitrophenol

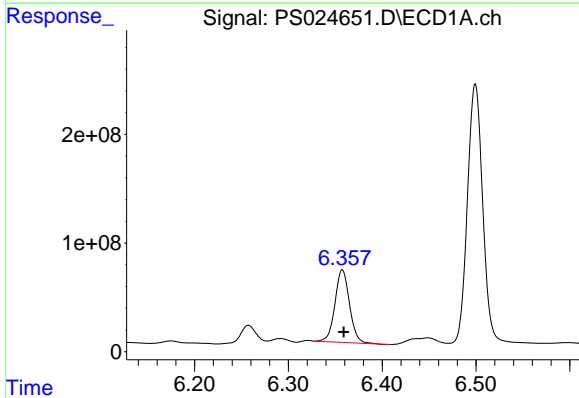
R.T.: 6.175 min
 Delta R.T.: -0.021 min
 Response: 52514788
 Conc: 38.79 ng/ml

Instrument :
 ECD_S
 ClientSampleId :



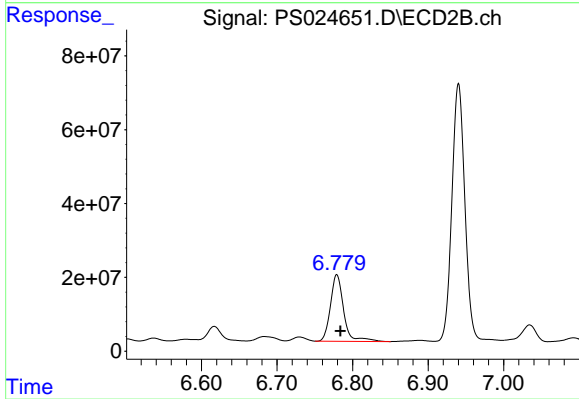
#3 4-Nitrophenol

R.T.: 6.436 min
 Delta R.T.: 0.039 min
 Response: 7252794
 Conc: 15.90 ng/ml



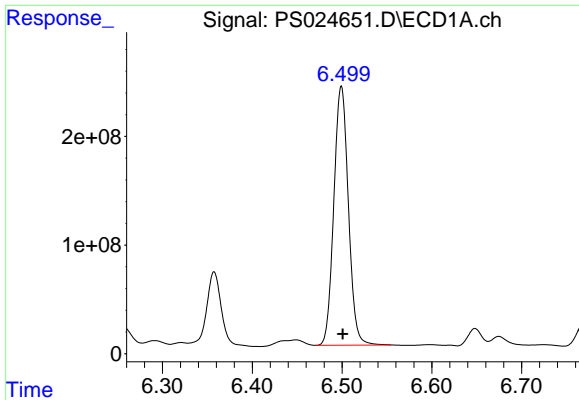
#4 2,4-DCAA

R.T.: 6.358 min
 Delta R.T.: -0.001 min
 Response: 718413806
 Conc: 349.20 ng/ml



#4 2,4-DCAA

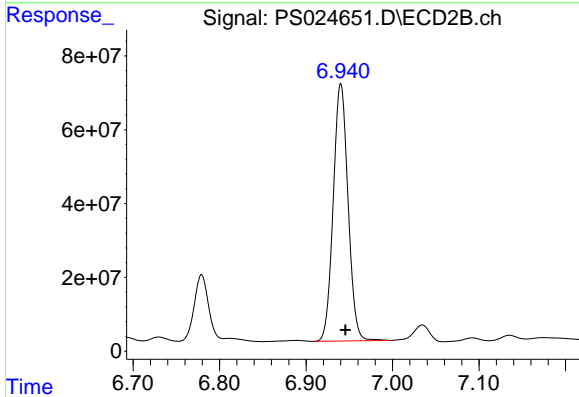
R.T.: 6.779 min
 Delta R.T.: -0.004 min
 Response: 218864812
 Conc: 316.60 ng/ml



#5 DICAMBA

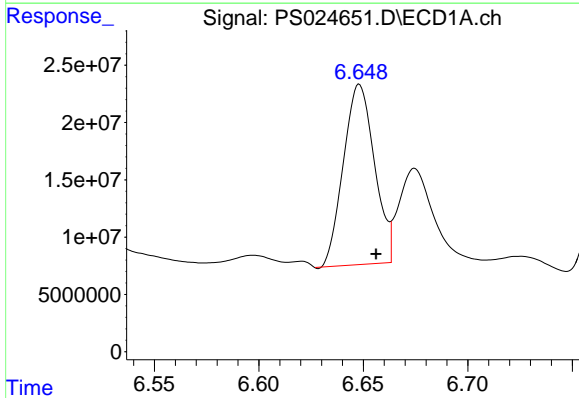
R.T.: 6.499 min
 Delta R.T.: -0.001 min
 Response: 2683930166
 Conc: 299.19 ng/ml

Instrument :
 ECD_S
 ClientSampleId :



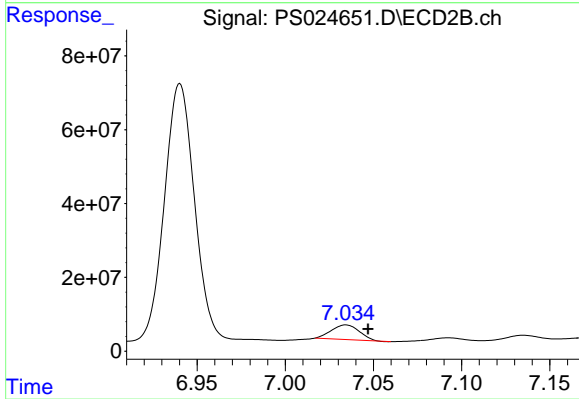
#5 DICAMBA

R.T.: 6.940 min
 Delta R.T.: -0.005 min
 Response: 827806377
 Conc: 279.54 ng/ml



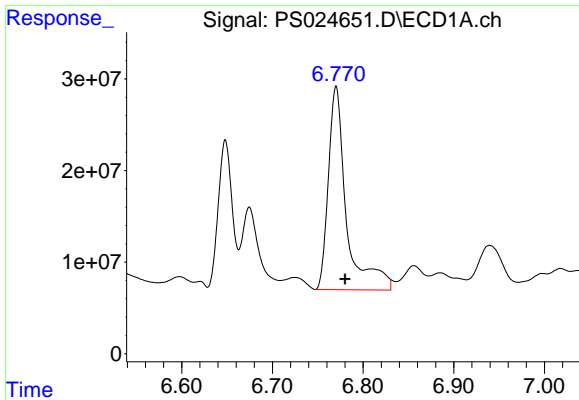
#6 MCPP

R.T.: 6.648 min
 Delta R.T.: -0.008 min
 Response: 162717133
 Conc: 25.68 ug/ml



#6 MCPP

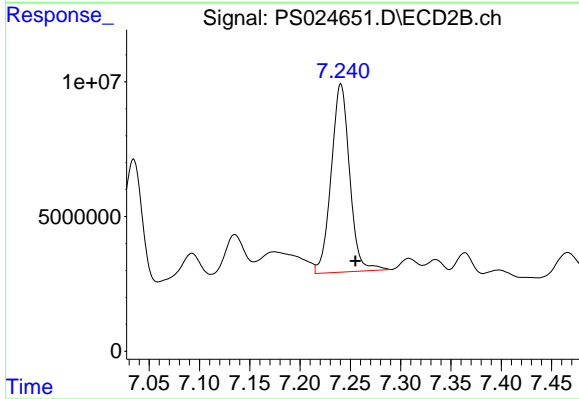
R.T.: 7.034 min
 Delta R.T.: -0.013 min
 Response: 43492819
 Conc: 22.07 ug/ml



#7 MCPA

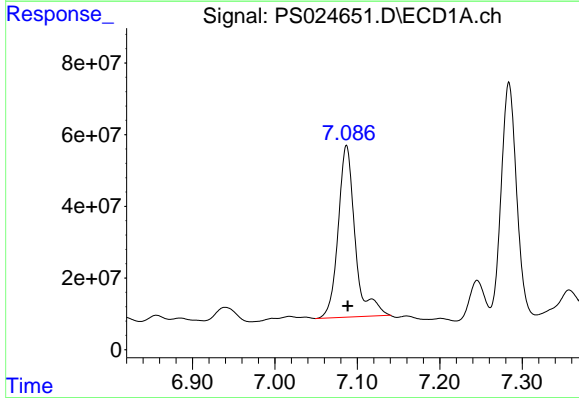
R.T.: 6.770 min
Delta R.T.: -0.010 min
Response: 307963472
Conc: 34.55 ug/ml

Instrument :
ECD_S
ClientSampleId :



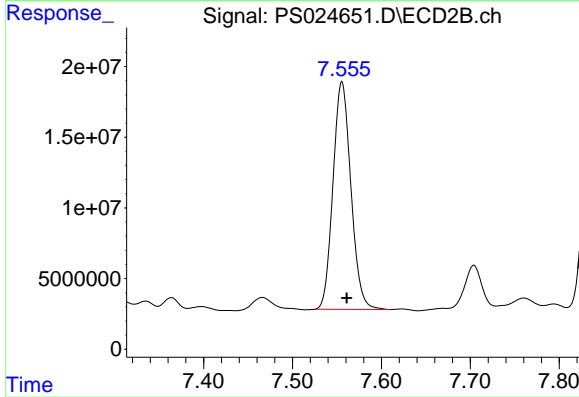
#7 MCPA

R.T.: 7.241 min
Delta R.T.: -0.014 min
Response: 89046279
Conc: 27.79 ug/ml



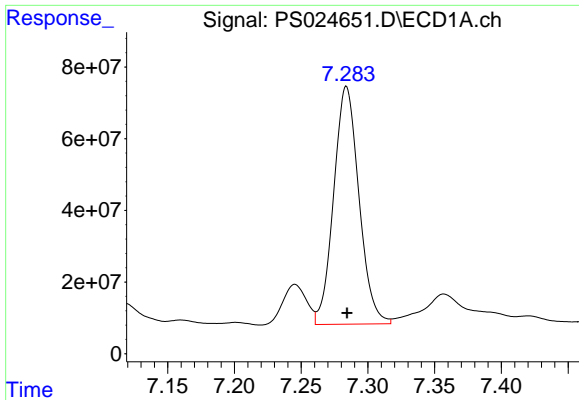
#8 DICHLORPROP

R.T.: 7.087 min
Delta R.T.: -0.001 min
Response: 684399144
Conc: 291.14 ng/ml



#8 DICHLORPROP

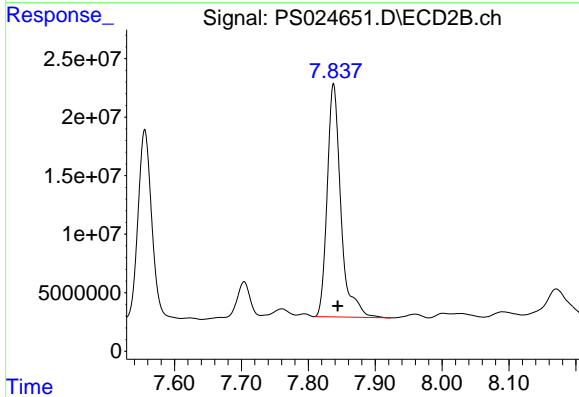
R.T.: 7.556 min
Delta R.T.: -0.005 min
Response: 225624542
Conc: 300.02 ng/ml



#9 2,4-D

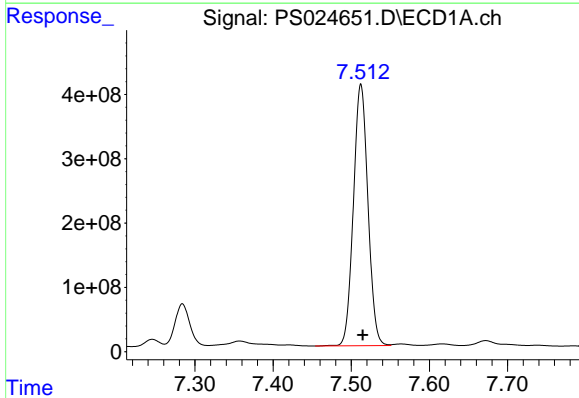
R.T.: 7.284 min
Delta R.T.: 0.000 min
Response: 875044632
Conc: 316.70 ng/ml

Instrument :
ECD_S
ClientSampleId :



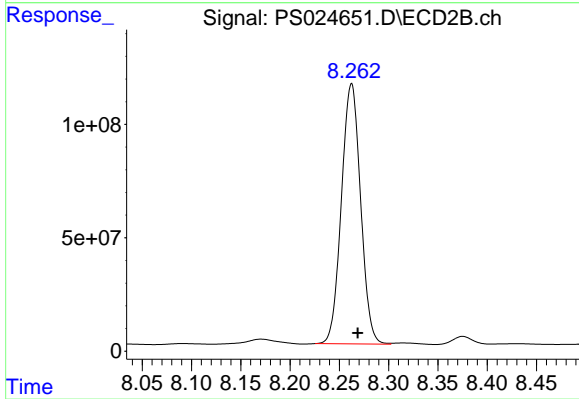
#9 2,4-D

R.T.: 7.838 min
Delta R.T.: -0.006 min
Response: 283115881
Conc: 307.58 ng/ml



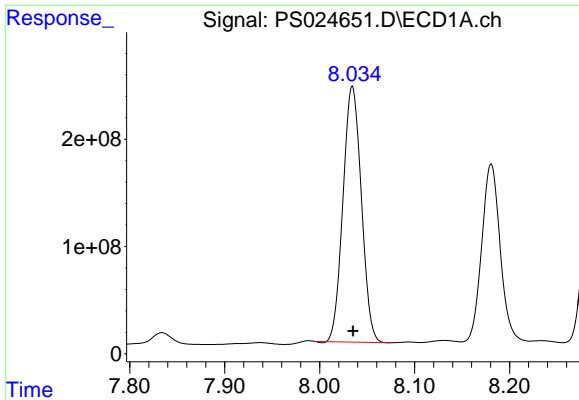
#10 Pentachlorophenol

R.T.: 7.512 min
Delta R.T.: -0.002 min
Response: 5251467299
Conc: 161.51 ng/ml



#10 Pentachlorophenol

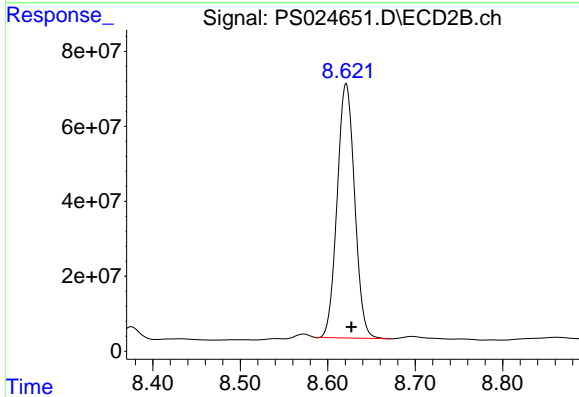
R.T.: 8.262 min
Delta R.T.: -0.006 min
Response: 1553336449
Conc: 142.56 ng/ml



#11 2,4,5-TP (SILVEX)

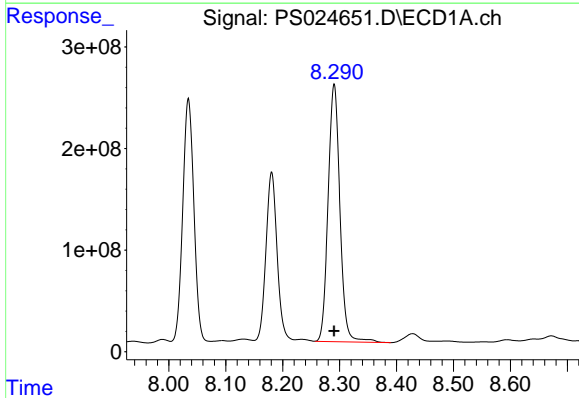
R.T.: 8.034 min
 Delta R.T.: 0.000 min
 Response: 3203914938
 Conc: 231.25 ng/ml

Instrument :
 ECD_S
 ClientSampleId :



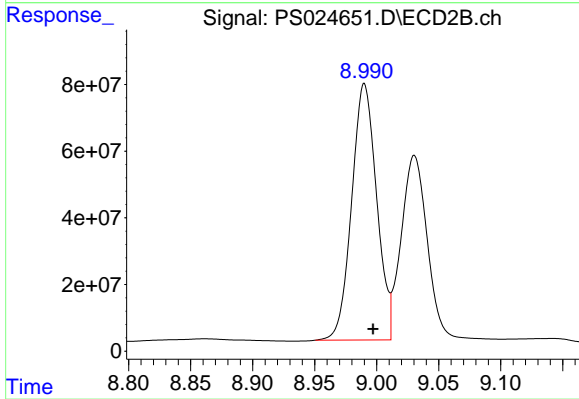
#11 2,4,5-TP (SILVEX)

R.T.: 8.621 min
 Delta R.T.: -0.006 min
 Response: 941240181
 Conc: 221.93 ng/ml



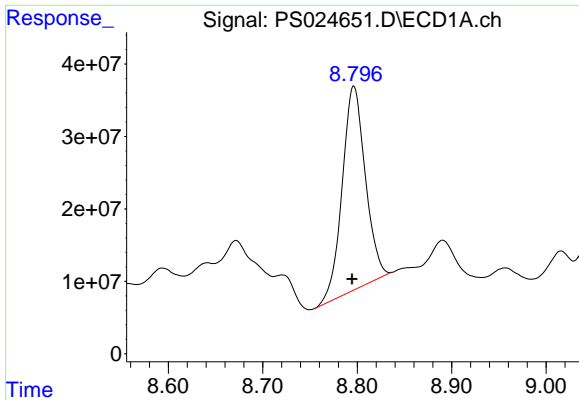
#12 2,4,5-T

R.T.: 8.290 min
 Delta R.T.: 0.000 min
 Response: 3651596118
 Conc: 279.49 ng/ml



#12 2,4,5-T

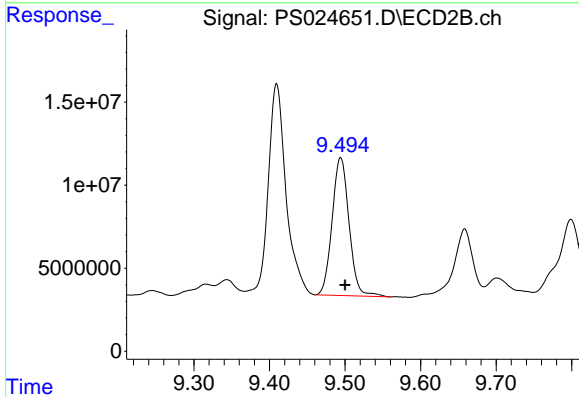
R.T.: 8.990 min
 Delta R.T.: -0.007 min
 Response: 1076176277
 Conc: 260.98 ng/ml



#13 2,4-DB

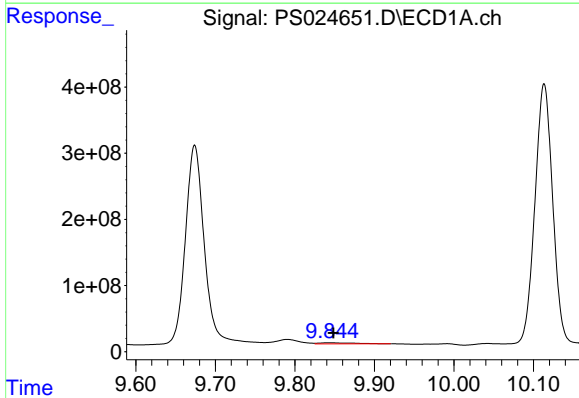
R.T.: 8.796 min
 Delta R.T.: 0.002 min
 Response: 477902690
 Conc: 233.93 ng/ml

Instrument :
 ECD_S
 ClientSampleId :



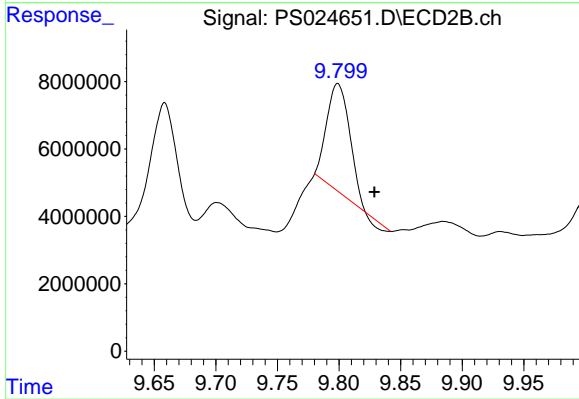
#13 2,4-DB

R.T.: 9.494 min
 Delta R.T.: -0.006 min
 Response: 129221985
 Conc: 253.58 ng/ml



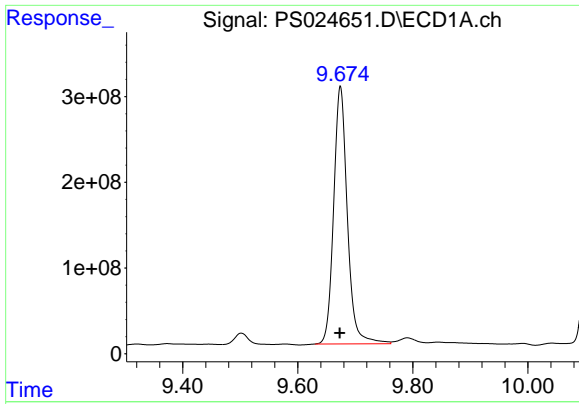
#14 DINOSEB

R.T.: 9.844 min
 Delta R.T.: -0.005 min
 Response: 50293523
 Conc: 4.92 ng/ml



#14 DINOSEB

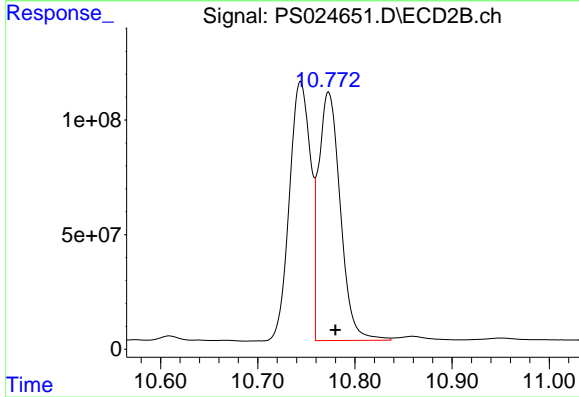
R.T.: 9.799 min
 Delta R.T.: -0.030 min
 Response: 40139537
 Conc: 12.94 ng/ml



#15 Picloram

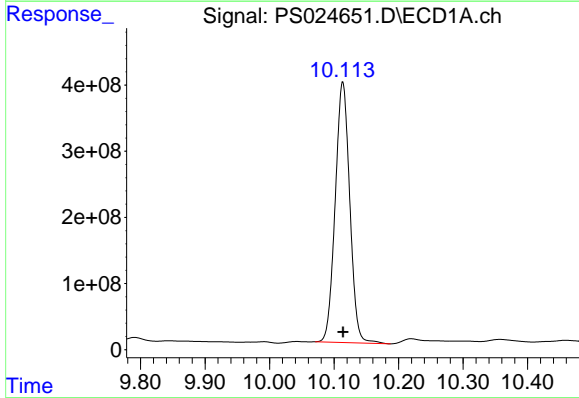
R.T.: 9.674 min
 Delta R.T.: 0.000 min
 Response: 4965420201
 Conc: 284.77 ng/ml

Instrument :
 ECD_S
 ClientSampleId :



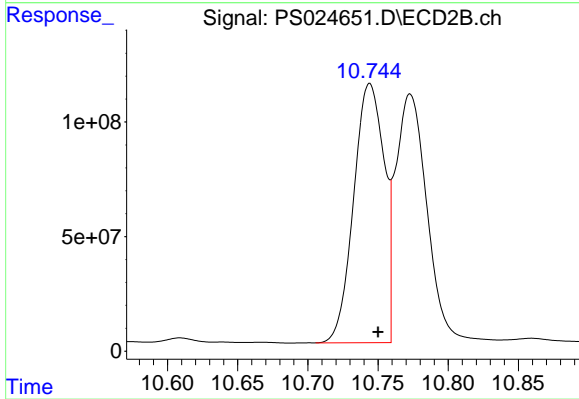
#15 Picloram

R.T.: 10.773 min
 Delta R.T.: -0.007 min
 Response: 1684340202
 Conc: 271.04 ng/ml



#16 DCPA

R.T.: 10.113 min
 Delta R.T.: 0.000 min
 Response: 6173509458
 Conc: 362.66 ng/ml



#16 DCPA

R.T.: 10.744 min
 Delta R.T.: -0.006 min
 Response: 1708659674
 Conc: 327.49 ng/ml