

Data Path : Z:\pestpcbsrv\HPCHEM1\ECD_S\Data\PS101821\
 Data File : PS017102.D
 Signal(s) : Signal #1: ECD1A.ch Signal #2: ECD2B.ch
 Acq On : 18 Oct 2021 17:55
 Operator : DD\AJ
 Sample : HSTDICC750
 Misc :
 ALS Vial : 5 Sample Multiplier: 1

Instrument :
 ECD_S
 ClientSampleId :
 HSTDICC750

Integration File signal 1: autoint1.e
 Integration File signal 2: autoint2.e
 Quant Time: Oct 19 01:15:48 2021
 Quant Method : Z:\pestpcbsrv\HPCHEM1\ECD_S\Method\PS101821.M
 Quant Title : 8080.M
 QLast Update : Tue Oct 19 01:14:25 2021
 Response via : Initial Calibration
 Integrator: ChemStation

Volume Inj. : 2 µl
 Signal #1 Phase : Rtx-CLPesticides Signal #2 Phase: Rtx-CLPesticides2
 Signal #1 Info : 30M x 0.32mm x0.5 Signal #2 Info : 30M x 0.32mm x 0.25µm

	Compound	RT#1	RT#2	Resp#1	Resp#2	ng/ml	ng/ml

System Monitoring Compounds							
4) S	2,4-DCAA	7.151	6.737	1151.8E6	442.2E6	750.000	750.000
Target Compounds							
1) T	Dalapon	2.989	2.491	1535.2E6	450.7E6	682.500	682.500
2) T	3,5-DICHL...	6.376	5.934	1516.7E6	617.6E6	697.500	697.500
3) T	4-Nitroph...	6.980	6.361	603.0E6	218.9E6	682.500	682.500
5) T	DICAMBA	7.341	6.898	4287.4E6	1833.9E6	705.000	705.000
6) T	MCPD	7.510	6.995	326.4E6	145.0E6	70.500	70.500
7) T	MCPA	7.659	7.206	441.6E6	206.9E6	69.750	69.750
8) T	DICHLORPROP	8.032	7.514	1061.9E6	457.2E6	705.000	705.000
9) T	2,4-D	8.260	7.804	1260.0E6	537.4E6	705.000	705.000
10) T	Pentachlo...	8.565	8.229	14970.8E6	5887.9E6	712.500	712.500
11) T	2,4,5-TP ...	9.114	8.589	5869.8E6	2508.3E6	712.500	712.500
12) T	2,4,5-T	9.399	8.966	5832.4E6	2325.5E6	712.500	712.500
13) T	2,4-DB	9.948	9.471	1090.7E6	300.3E6	712.500	712.500
14) T	DINOSEB	11.100	9.797	4077.9E6	1614.4E6	705.000	705.000
15) T	Picloram	10.922	10.775	7875.7E6	2855.0E6	712.500	712.500
16) T	DCPA	11.369	10.727	7434.6E6	3129.8E6	720.000	720.000

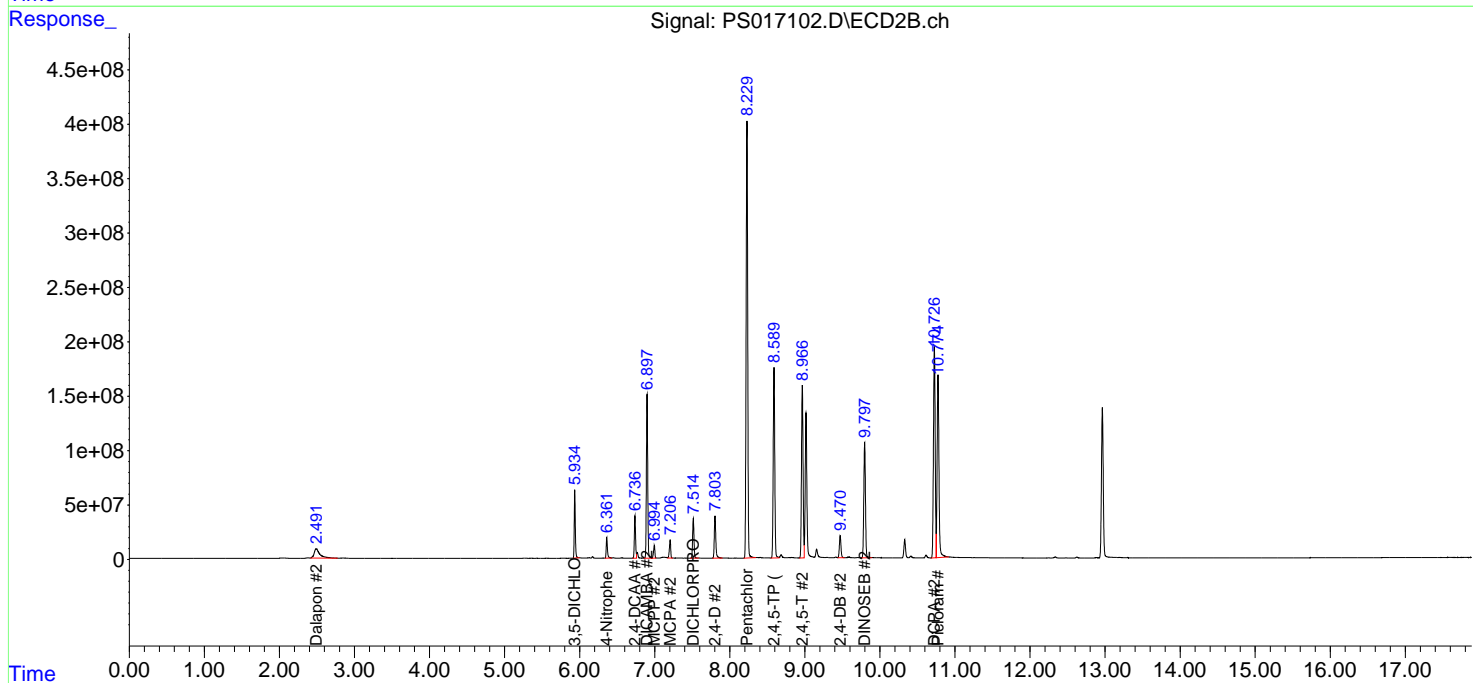
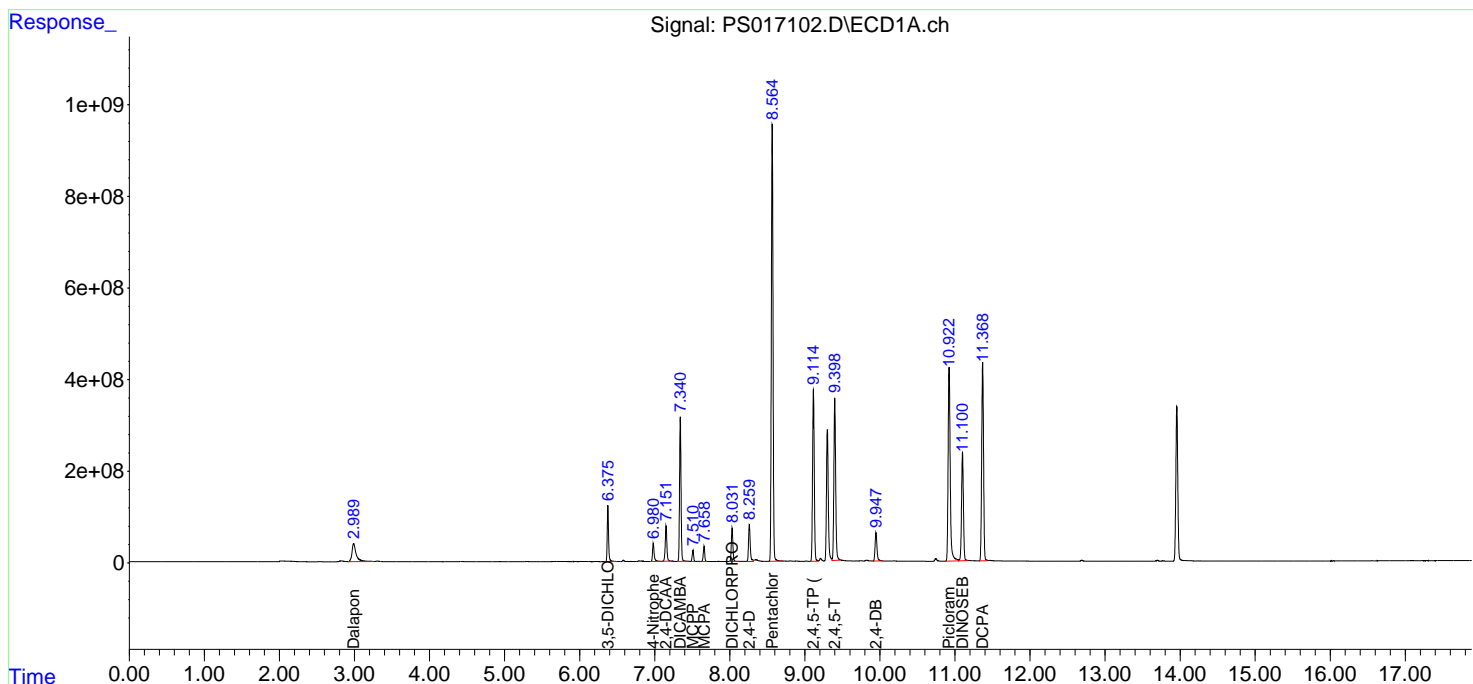
(f)=RT Delta > 1/2 Window (#)=Amounts differ by > 25% (m)=manual int.

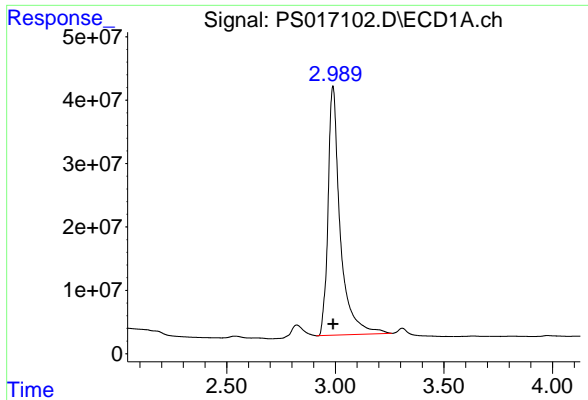
Data Path : Z:\pestpcbsrv\HPCHEM1\ECD_S\Data\PS101821\
 Data File : PS017102.D
 Signal(s) : Signal #1: ECD1A.ch Signal #2: ECD2B.ch
 Acq On : 18 Oct 2021 17:55
 Operator : DD\AJ
 Sample : HSTDICC750
 Misc :
 ALS Vial : 5 Sample Multiplier: 1

Instrument :
 ECD_S
 ClientSampleId :
 HSTDICC750

Integration File signal 1: autoint1.e
 Integration File signal 2: autoint2.e
 Quant Time: Oct 19 01:15:48 2021
 Quant Method : Z:\pestpcbsrv\HPCHEM1\ECD_S\Method\PS101821.M
 Quant Title : 8080.M
 QLast Update : Tue Oct 19 01:14:25 2021
 Response via : Initial Calibration
 Integrator: ChemStation

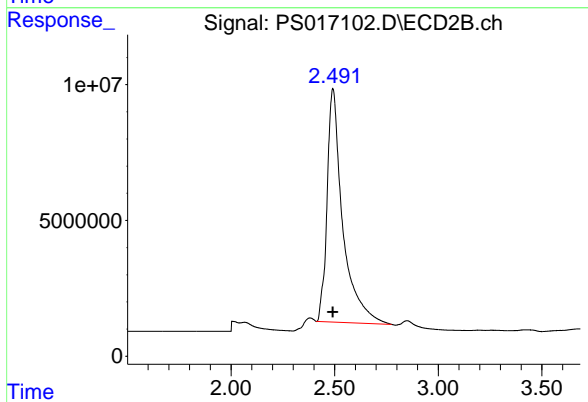
Volume Inj. : 2 µl
 Signal #1 Phase : Rtx-CLPesticides Signal #2 Phase: Rtx-CLPesticides2
 Signal #1 Info : 30M x 0.32mm x0.5 Signal #2 Info : 30M x 0.32mm x 0.25µm



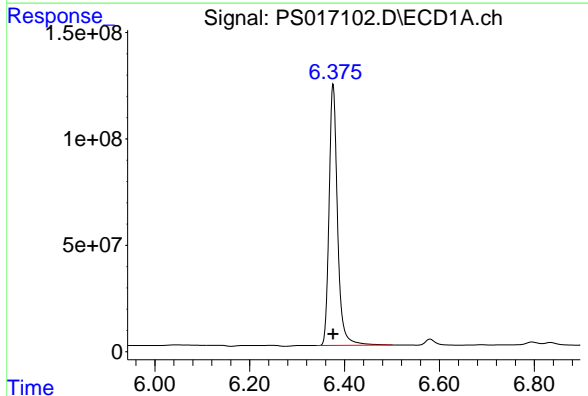


#1 Dalapon
R.T.: 2.989 min
Delta R.T.: 0.000 min
Response: 1535204812
Conc: 682.50 ng/ml

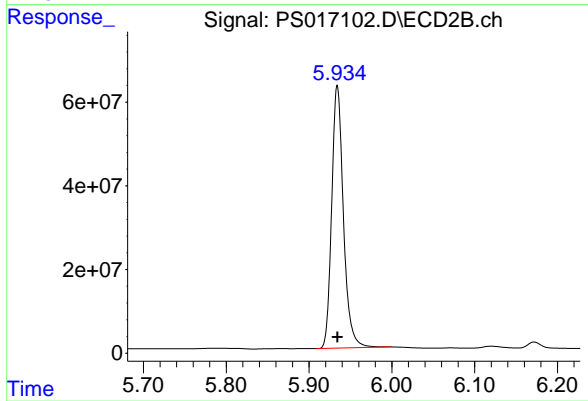
Instrument :
ECD_S
ClientSampleId :
HSTDICC750



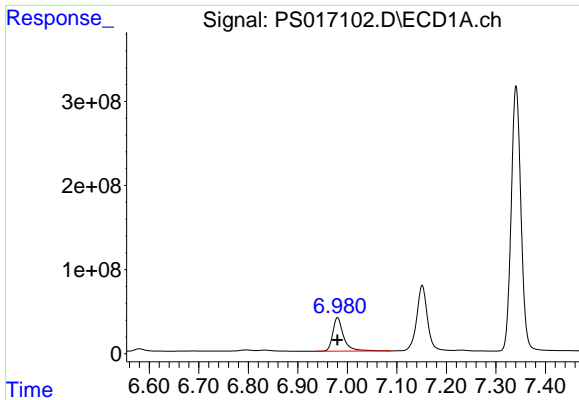
#1 Dalapon
R.T.: 2.491 min
Delta R.T.: 0.000 min
Response: 450652253
Conc: 682.50 ng/ml



#2 3,5-DICHLOROBENZOIC ACID
R.T.: 6.376 min
Delta R.T.: 0.000 min
Response: 1516695620
Conc: 697.50 ng/ml



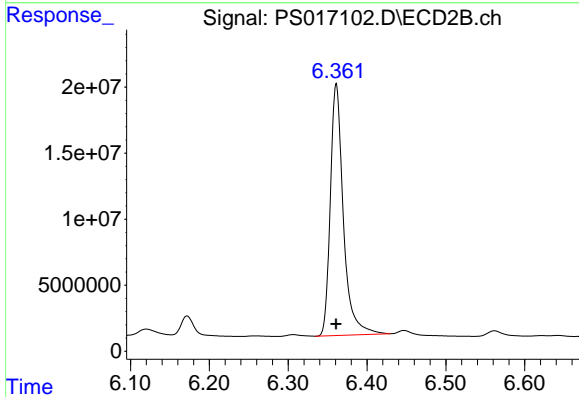
#2 3,5-DICHLOROBENZOIC ACID
R.T.: 5.934 min
Delta R.T.: 0.000 min
Response: 617562620
Conc: 697.50 ng/ml



#3 4-Nitrophenol

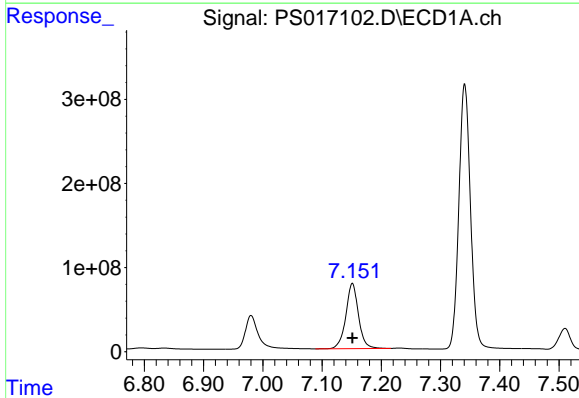
R.T.: 6.980 min
 Delta R.T.: 0.000 min
 Response: 603038264
 Conc: 682.50 ng/ml

Instrument :
 ECD_S
 ClientSampleId :
 HSTDICC750



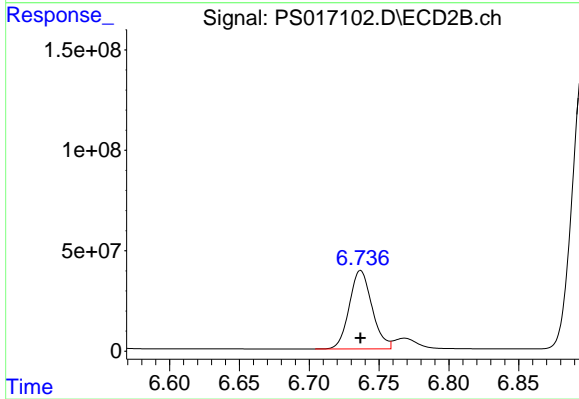
#3 4-Nitrophenol

R.T.: 6.361 min
 Delta R.T.: 0.000 min
 Response: 218911966
 Conc: 682.50 ng/ml



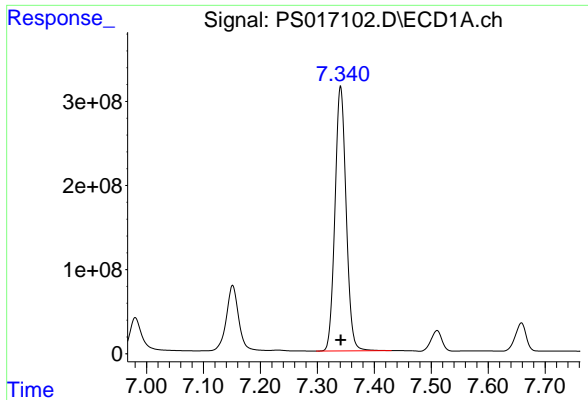
#4 2,4-DCAA

R.T.: 7.151 min
 Delta R.T.: 0.000 min
 Response: 1151779350
 Conc: 750.00 ng/ml



#4 2,4-DCAA

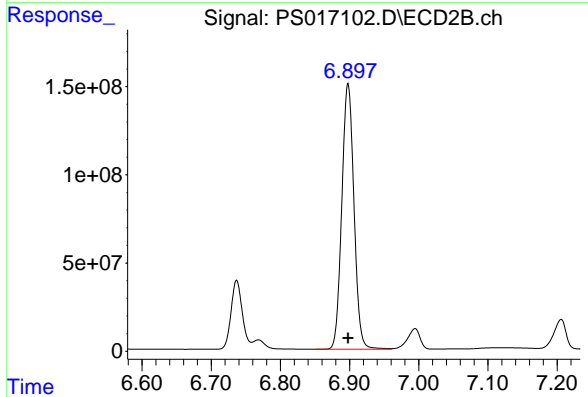
R.T.: 6.737 min
 Delta R.T.: 0.000 min
 Response: 442237391
 Conc: 750.00 ng/ml



#5 DICAMBA

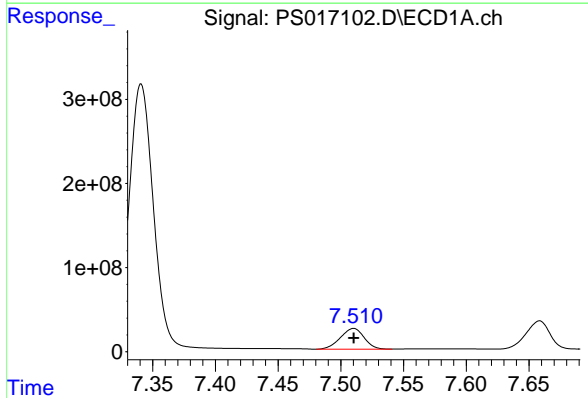
R.T.: 7.341 min
 Delta R.T.: 0.000 min
 Response: 4287368322
 Conc: 705.00 ng/ml

Instrument :
 ECD_S
 ClientSampleId :
 HSTDICC750



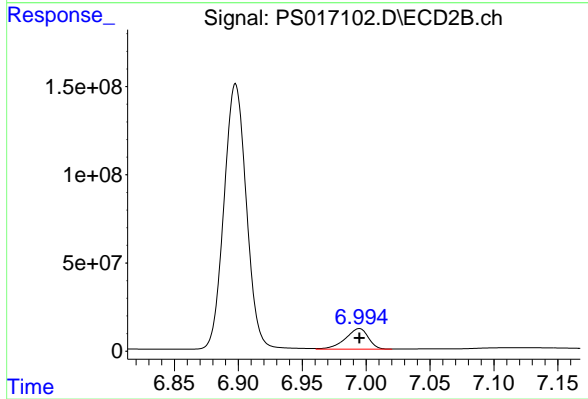
#5 DICAMBA

R.T.: 6.898 min
 Delta R.T.: 0.000 min
 Response: 1833942863
 Conc: 705.00 ng/ml



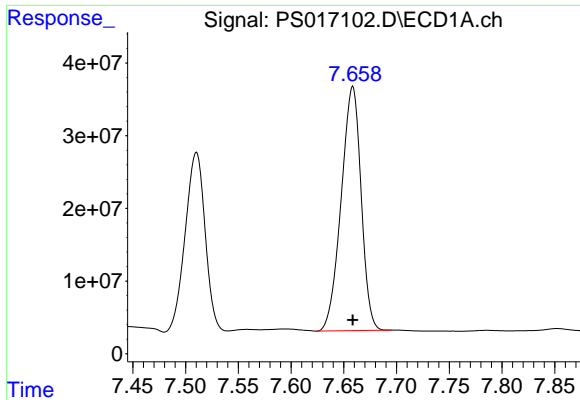
#6 MCP

R.T.: 7.510 min
 Delta R.T.: 0.000 min
 Response: 326427418
 Conc: 70.50 ug/ml



#6 MCP

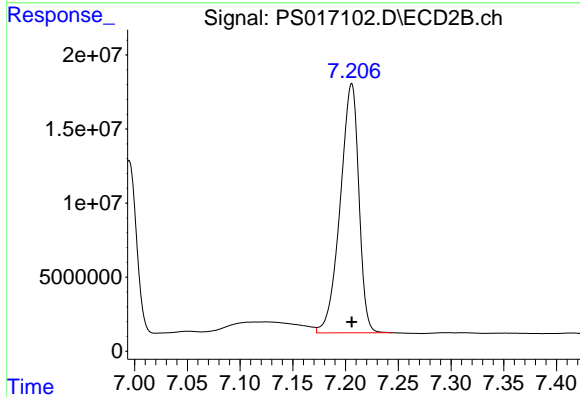
R.T.: 6.995 min
 Delta R.T.: 0.000 min
 Response: 145013414
 Conc: 70.50 ug/ml



#7 MCPA

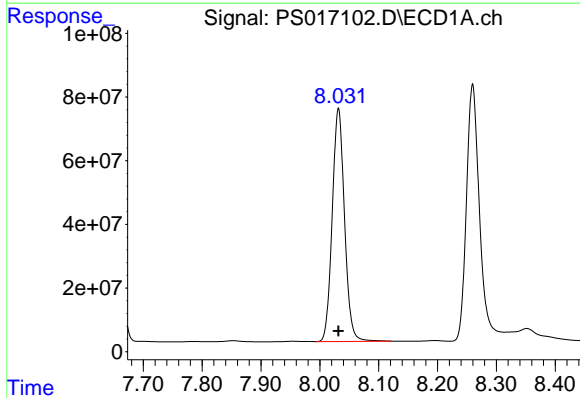
R.T.: 7.659 min
 Delta R.T.: 0.000 min
 Response: 441591231
 Conc: 69.75 ug/ml

Instrument :
 ECD_S
 ClientSampleId :
 HSTDICC750



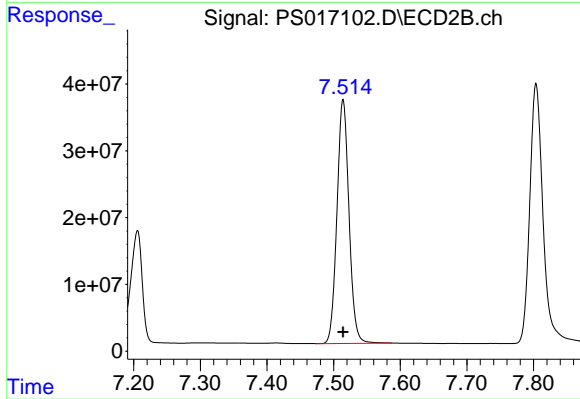
#7 MCPA

R.T.: 7.206 min
 Delta R.T.: 0.000 min
 Response: 206886018
 Conc: 69.75 ug/ml



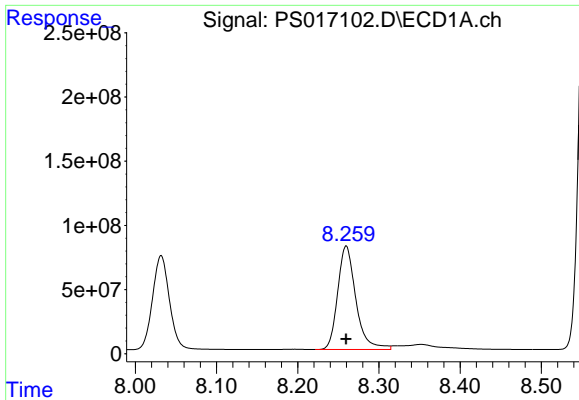
#8 DICHLORPROP

R.T.: 8.032 min
 Delta R.T.: 0.000 min
 Response: 1061874840
 Conc: 705.00 ng/ml



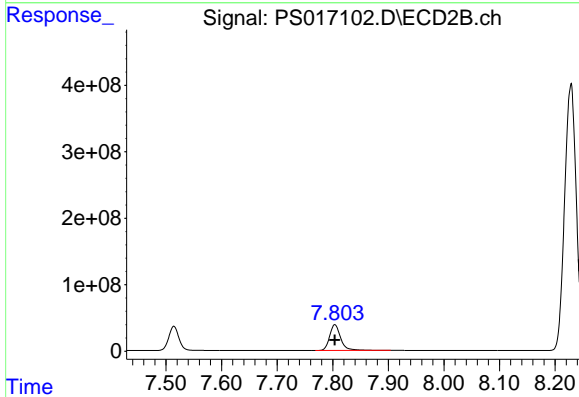
#8 DICHLORPROP

R.T.: 7.514 min
 Delta R.T.: 0.000 min
 Response: 457235170
 Conc: 705.00 ng/ml

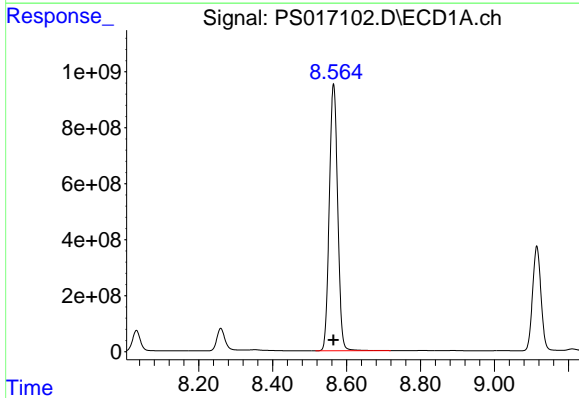


#9 2,4-D
 R.T.: 8.260 min
 Delta R.T.: 0.000 min
 Response: 1259999128
 Conc: 705.00 ng/ml

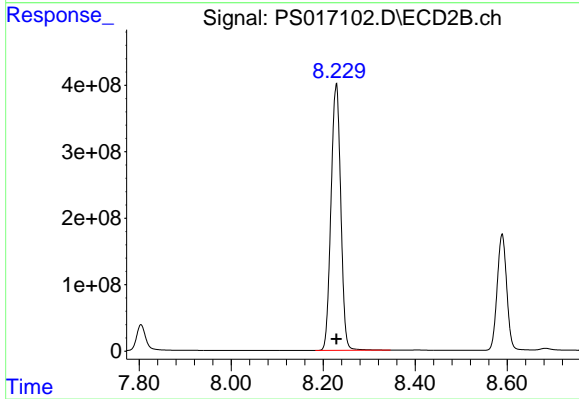
Instrument :
 ECD_S
ClientSampleId :
 HSTDICC750



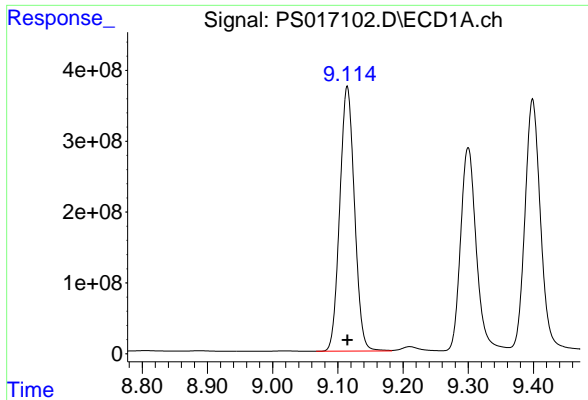
#9 2,4-D
 R.T.: 7.804 min
 Delta R.T.: 0.000 min
 Response: 537435539
 Conc: 705.00 ng/ml



#10 Pentachlorophenol
 R.T.: 8.565 min
 Delta R.T.: 0.000 min
 Response: 14970832647
 Conc: 712.50 ng/ml

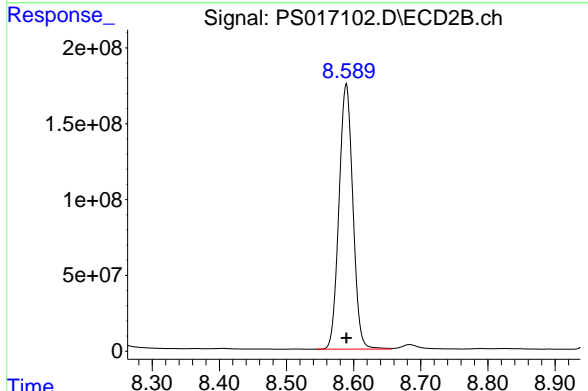


#10 Pentachlorophenol
 R.T.: 8.229 min
 Delta R.T.: 0.000 min
 Response: 5887856115
 Conc: 712.50 ng/ml

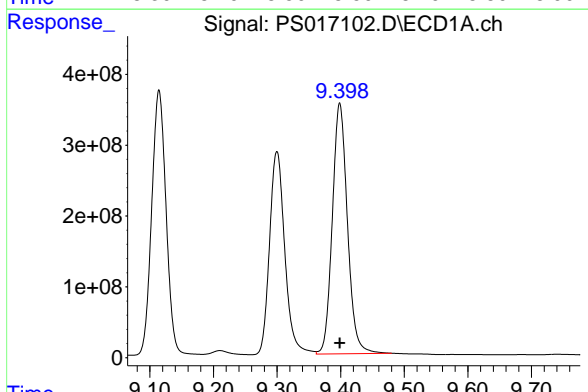


#11 2,4,5-TP (SILVEX)
 R.T.: 9.114 min
 Delta R.T.: 0.000 min
 Response: 5869822506
 Conc: 712.50 ng/ml

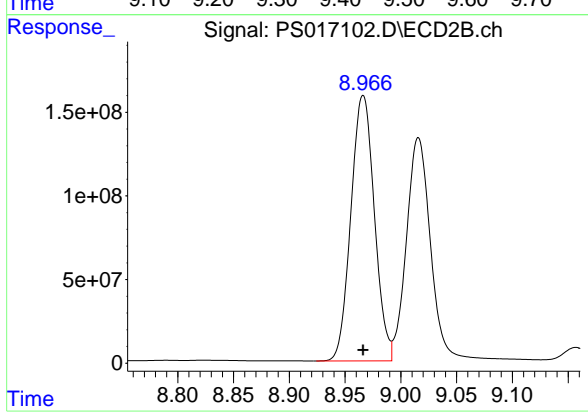
Instrument :
 ECD_S
 ClientSampleId :
 HSTDICC750



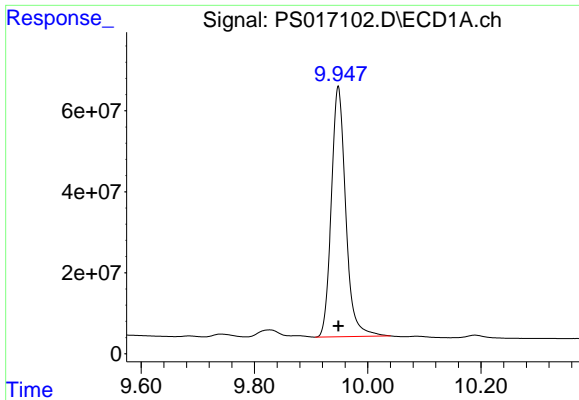
#11 2,4,5-TP (SILVEX)
 R.T.: 8.589 min
 Delta R.T.: 0.000 min
 Response: 2508330138
 Conc: 712.50 ng/ml



#12 2,4,5-T
 R.T.: 9.399 min
 Delta R.T.: 0.000 min
 Response: 5832446145
 Conc: 712.50 ng/ml



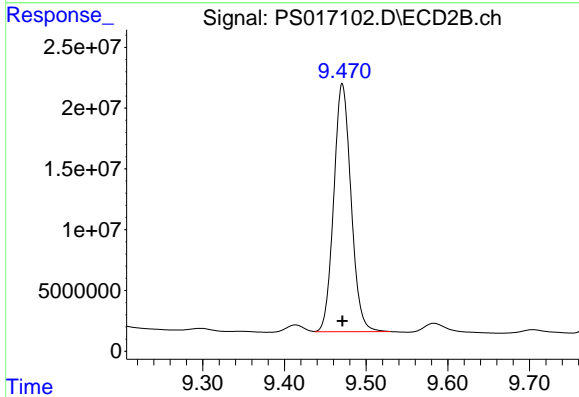
#12 2,4,5-T
 R.T.: 8.966 min
 Delta R.T.: 0.000 min
 Response: 2325495635
 Conc: 712.50 ng/ml



#13 2,4-DB

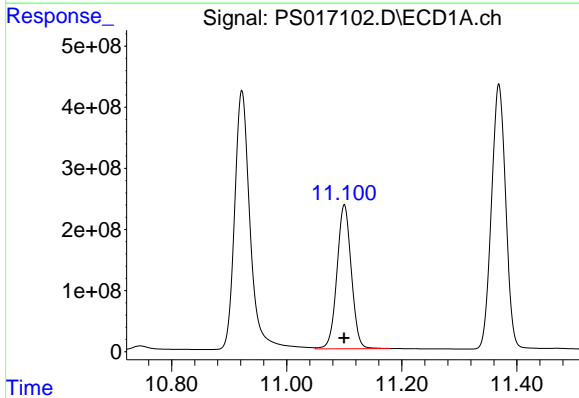
R.T.: 9.948 min
 Delta R.T.: 0.000 min
 Response: 1090749641
 Conc: 712.50 ng/ml

Instrument :
 ECD_S
 ClientSampleId :
 HSTDICC750



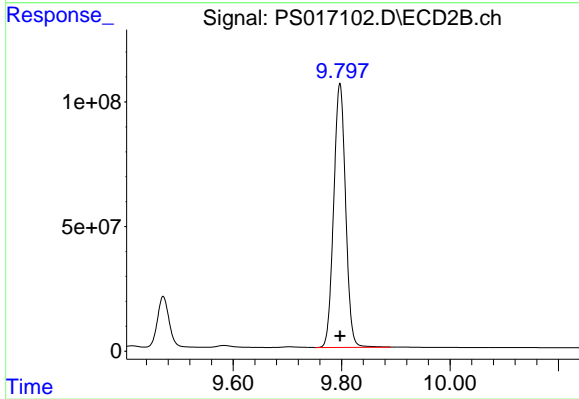
#13 2,4-DB

R.T.: 9.471 min
 Delta R.T.: 0.000 min
 Response: 300343571
 Conc: 712.50 ng/ml



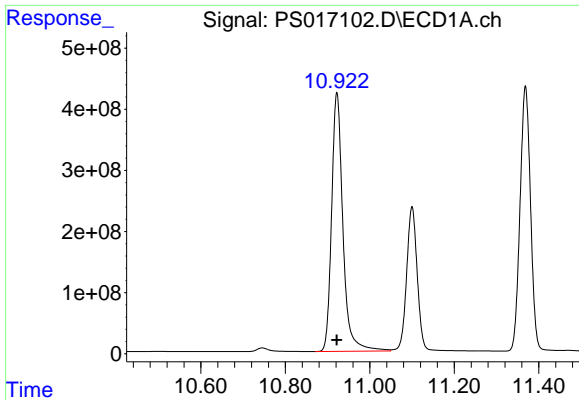
#14 DINOSEB

R.T.: 11.100 min
 Delta R.T.: 0.000 min
 Response: 4077916579
 Conc: 705.00 ng/ml



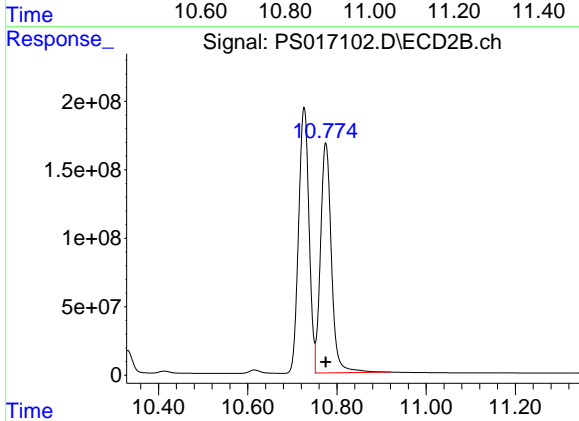
#14 DINOSEB

R.T.: 9.797 min
 Delta R.T.: 0.000 min
 Response: 1614372240
 Conc: 705.00 ng/ml

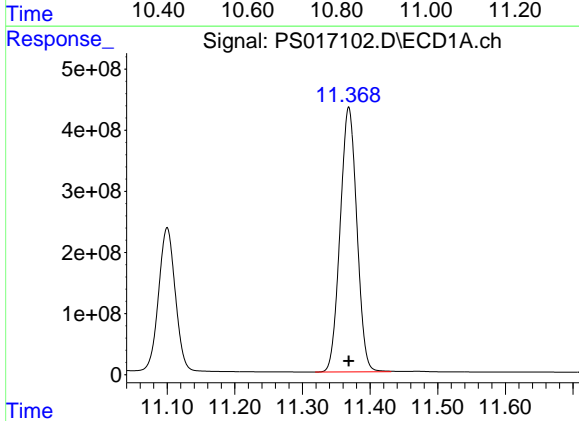


#15 Picloram
R.T.: 10.922 min
Delta R.T.: 0.000 min
Response: 7875667704
Conc: 712.50 ng/ml

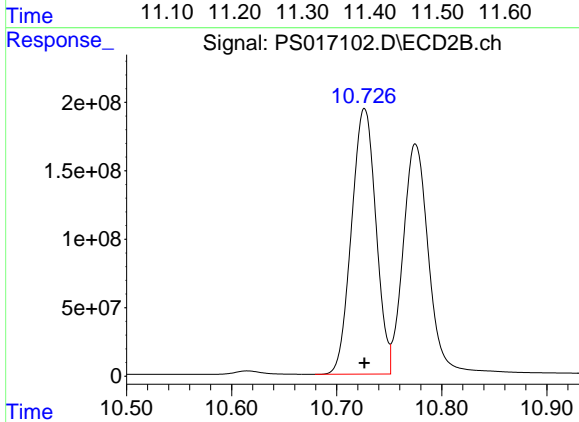
Instrument :
ECD_S
ClientSampleId :
HSTDICC750



#15 Picloram
R.T.: 10.775 min
Delta R.T.: 0.000 min
Response: 2855044474
Conc: 712.50 ng/ml



#16 DCPA
R.T.: 11.369 min
Delta R.T.: 0.000 min
Response: 7434567288
Conc: 720.00 ng/ml



#16 DCPA
R.T.: 10.727 min
Delta R.T.: 0.000 min
Response: 3129848624
Conc: 720.00 ng/ml